

C O U N T Y A D M I N I S T R A T O R



SUSAN S. MURANISHI
COUNTY ADMINISTRATOR

January 22, 2019

Honorable Board of Supervisors
Administration Building
Oakland, CA 94612

Dear Board Members:

SUBJECT: ADOPTION OF 2019-2020 ALAMEDA COUNTY LEGISLATIVE PLATFORM

RECOMMENDATION:

- A. Adopt the 2019-2020 Alameda County Legislative Platform as recommended by the Personnel, Administration and Legislation (PAL) Board Committee on January 28, 2019;
- B. Adopt the 2019 Alameda County Legislative Priorities including County sponsored legislation;
- C. Adopt the general principle that the Alameda County Board of Supervisors supports legislation which is consistent with the County's Mission, Vision, Values, and Vision 2026 - Shared Visions, 10X Goals and Operating Principles; and
- D. Direct Alameda County's federal and State legislative advocates to represent the County's interest in federal and State legislative and budget proposals identified in, or in the spirit of, the 2019-2020 Legislative Platform and 2019 Priorities.

SUMMARY:

The 2019-2020 Alameda County Legislative Platform and 2019 Priorities are intended to serve as key documents for the County's advocacy efforts by County officials, County staff, and our legislative advocates. Over the past several months, staff have revised the County Legislative Platform to align with Vision 2026, make the format more concise, and draw emphasis to key policy and budget areas that impact County residents.

Key changes to the Legislative Platform include:

- It covers two years (2019-2020) although it may be amended at any time through the established PAL Committee process with subsequent Board approval;
- All planks in the Platform align with Vision 2026 which includes our Shared Visions, 10X Goals, and Operating Principles;
- Identifies priorities that are of special import to the County across several policy areas;
- It has been streamlined and revised from 174 pages to 31 pages in length; and
- The addition of the 2019 County Legislative Priorities which highlights issues of focus for the 2019 legislative session including County sponsored legislative proposals.

DISCUSSION:

As your Board is aware, Alameda County has long enjoyed rich and successful advocacy efforts at both the State and federal levels. To continue and improve upon our past efforts, the Platform has been revised and reformatted to align our advocacy efforts to your Board's adopted Vision 2026. It will guide the County's legislative advocacy activities during the next two years. The Platform was developed over the past several months in collaboration with Board offices, Agency/Department heads, and representatives from participating County agencies and departments.

The Platform document consists of four general sections – a primer/overview of the County; priority issue areas; Vision 2026; and a legislative issue matrix. The primer/overview provides basic facts about County governance and demographics. The priority issues section describes key areas of County action and concern. The Platform provides an overview of Vision 2026: Shared Visions, Guiding Principles, and 10X Goals. The legislative matrix includes key policy areas aligned with your Board's Vision 2026 goals. The Legislative Platform anticipates areas of interest for the County's residents, however, if new policy issues emerge, amendments will be brought to PAL for review and comment.

The Legislative Platform serves as the foundation for the County's Legislative Priorities document. The Legislative Priorities document is one page in length and will cover one year (2019) in the legislative cycle. County sponsored bills and areas of prioritization for the year are included in this document. In accordance with these priorities, PAL has put forward a recommendation to support the following proposals in the Governor's budget: In-Home Support Services, Medi-Cal expansion, CalWORKs grants, 2020 Census, and Homelessness funding.

The following proposals for County sponsored or co-sponsored legislation are advanced for your consideration for inclusion in the Platform.

2019 County Legislative Proposals		
Proposal	Submitter	State/Federal
Alignment of State regulations for the administration of CalFresh and CalWORKs regarding sponsored noncitizens	Social Services Agency	State
Co-sponsor AB 143 Quirk-Silva – Shelter Crisis: homeless shelters	Homelessness Council	State

Social Services proposes another attempt to align the sponsor "deeming" exemption criteria for CalWORKs and CalFresh. Most legal immigrants in the U.S. are eligible for CalWORKs and CalFresh benefits, provided they meet financial and categorical requirements. In California, if a county determines a sponsored noncitizen would go hungry and homeless without aid, the sponsored noncitizen is determined to be indigent. A sponsored non-citizen can apply for CalFresh benefits every 12 months. However, that same eligible individual can only apply for CalWORKs benefits for a total of 12 months. The county seeks the authority to renew CalWORKs benefits to an eligible sponsored indigent non-citizen similar to how they are extended under CalFresh.

The Alameda County Homelessness Council has submitted a proposal to co-sponsor Assembly Bill 143 (Quirk-Silva) – Shelter crisis: homeless shelters. Current law allows specific jurisdictions to, upon declaration of a shelter crisis, suspend certain state and local laws, regulations, and ordinances to the extent that strict compliance would prevent, hinder, or delay the mitigation of the effects of the shelter crisis. This bill would extend the application of existing law to Alameda County.

This Platform package (2019-2020 Legislative Platform and 2019 County Priorities) was reviewed and recommended to the full Board for adoption, by your Board's Personnel, Administration and Legislation (PAL) Policy Committee at its regular meetings on January 7, 14, and 28, 2019.

With your Boards approval of the Legislative Platform package, the County can ensure our advocacy efforts align with our Vision to have Alameda County recognized as one of the best counties in which to live, work and do business.

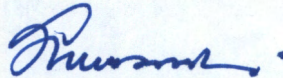
FINANCING:

There will be no increase in net county costs related to the adoption of the 2019-2020 Alameda County Legislative Platform package, though State and federal legislative actions can have impacts on County finances.

VISION 2026:

The entirety of the 2019-2020 Legislative Platform is aligned with the Vision 2026 - Shared Visions, 10X Goals and Operating Principles.

Very truly yours,



Susan S. Muranishi
County Administrator

Attachments
SSM:AC:TSR:mp

cc: Auditor-Controller
County Counsel

2019 COUNTY PRIORITIES

Alameda County's Vision 2026 Operating Principles of Access, Collaboration, Equity, Fiscal Stewardship, Innovation, and Sustainability provide the foundation for all County policies and programs. These Principles inform and support realization of the County's Mission: to enrich the lives of Alameda County residents through visionary policies and accessible, responsible, and effective services. To further these principles the County has identified the following policy priorities to help focus our legislative advocacy in 2019.

REVENUE STABILITY AND FLEXIBILITY

Stable funding and flexibility are required to provide County services to residents. The County supports dependable, predictable, sustainable, and equitable revenue streams and allocation methodologies—including funding for administrative costs. The County opposes transfers of responsibilities to counties without adequate funding and efforts to eliminate or redirect revenues currently dedicated to local government. The County supports efforts that enhance funding and program administration flexibility, incorporate the increased costs and needs for mandated programs and allow for additional revenue raising authority for counties.



FUNDING FOR HOMELESSNESS

The County supports additional funding from the State and federal government, private sector, and foundations to reduce homelessness, support rapid re-housing, provide services for those at risk of homelessness, and continue building affordable housing. The County supports flexible funding and programs to serve our County's unique regional needs.



2020 CENSUS COMPLETE COUNT

The U.S Census Bureau will conduct the next Census in 2020. Alameda County is one of the country's fifty hardest to count counties, which translates into less funding and fewer services for families in need. The County supports securing adequate funding to ensure a complete and accurate count of all Alameda County residents, especially the hard-to-count populations. An accurate Census count ensures that the County receives adequate funding across many State and federal programs.



IMMIGRANT PROTECTIONS

Nearly 1 in 3 Alameda County residents is an immigrant. The County supports policies that protect and defend immigrants regardless of status, prioritizing comprehensive immigration reform; family unity; access to health care, social services, and educational and legal services; and preventing the loss of current status, services, and benefits, specifically opposing the expansion of the definition of "public charge." The County supports policies that minimize the harmful local impacts of federal immigration policy including the ability to report crimes without fear of retribution and safe access to public spaces.



HEALTHY COMMUNITIES AND HEALTH CARE FOR ALL

The County supports policies and funding to reduce health inequities and increase access to quality health care for all Alameda County residents, regardless of socioeconomic or immigration status. The County advocates for investments in the safety net, a robust public health infrastructure, and a comprehensive statewide behavioral health care delivery system that includes peer programs. The County also supports policies and funding to enforce state public health and environmental health duties and laws, including funding to assist local compliance with onsite wastewater treatment systems laws.



1/14/19 3pm



2019 COUNTY PRIORITIES

INNOVATIVE HOUSING

The policies and practices on land use development are one of the most critical aspects of building healthy, equitable, and resilient communities that are sustainable today and for future generations. The County supports developing high-level land use policies to allow innovative, affordable, and pilot-type projects to alleviate homelessness.



SAFE, ACCESSIBLE, AND MODERN INFRASTRUCTURE

Community and program planning should include, protect, and support policies that promote and ensure accessibility of spaces for people of all abilities, ages, and modes of mobility. The County supports policies and legislation that increase safety, funding, pavement and sidewalk rehabilitation, and a dedicated funding source for all rural road safety projects. The County supports securing additional resources to upgrade streetscapes, transit access, consolidated parking, and activated open space.



COMMUNITY-BASED SUPPORT FOR REENTRY

Alameda County supports rehabilitation and programs providing options for incarcerated and/or returning residents to make safer, healthier, and crime-free choices. The County supports additional State and federal funding for the Alameda County Public Safety Departments to support the continued changes to public safety policy that enable effective programs and reforms, including the public safety realignment of 2011; propositions 47, 57, and 64; SB 1437 (2018); and SB 10 (2018). The County also supports a continued focus on robust pretrial services to further improve outcomes and enhance the safety of our communities.



CLIMATE CHANGE MITIGATION

Shifting to a clean energy economy provides opportunities for job growth and helps ensure a healthy environment. The County supports aggressively developing renewable energy targets to keep fossil fuels "in the ground" including the development of utility-scaled solar projects and other alternative energy sources.



PUBLIC HEALTH NURSING

The increased fee for a Public Health Nursing (PHN) certificate, an out-of-pocket cost for nurses, affects public health as many local health departments struggle with hiring and retaining PHNs. The County supports efforts to lower the recently increased PHN certification fees.



FOOD FOR ALL

One in four California children experience hunger and nearly five million Californians experience food insecurity. The County supports Food for All policies and supports additional funding for the expansion of CalFresh and the California Food Assistance Program (CFAP) specifically for vulnerable populations including those currently without access to benefits such as immigrants.



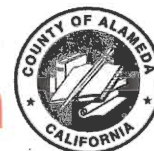
CALWORKS SPONSORED NONCITIZENS

County Sponsored Measure & Budget Request

Most legal immigrants in the U.S. are eligible for CalWORKs and CalFresh benefits, provided they meet financial and categorical requirements. An eligible, sponsored non-citizen can apply for CalFresh benefits every 12 months, but that same individual can only apply for CalWORKs benefits for a total of 12 months. The County seeks the authority to renew CalWORKs benefits to an eligible sponsored indigent non-citizen similar to how they are extended under CalFresh.



1/14/19 3pm

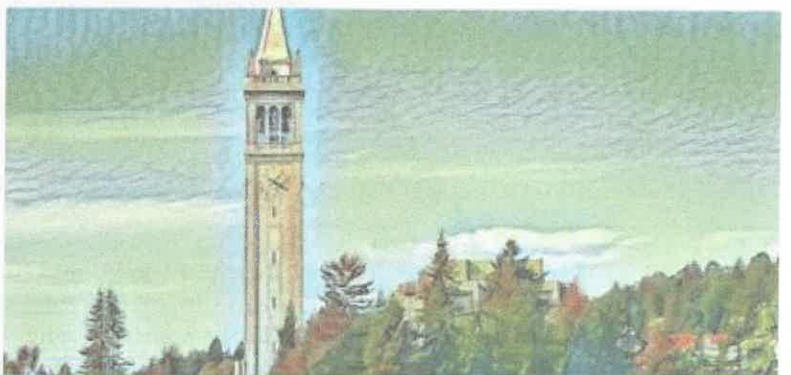
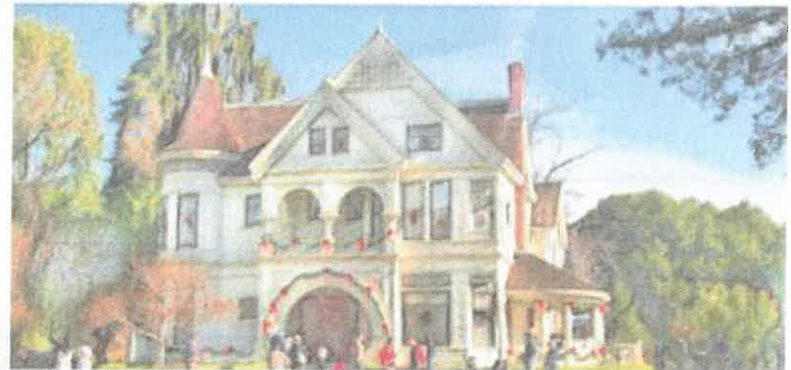


2019-2020



1/16/19 2pm

ALAMEDA COUNTY LEGISLATIVE PLATFORM



ADOPTED BY THE BOARD OF SUPERVISORS ON MONTH DAY, YEAR

CONTENTS

Introduction.....	2
County Overview	3
Population.....	4
County Budget	5
Cost of Living.....	7
Safety Net Programs	7
Rising Cost of Housing.....	8
Homelessness	9
2020 Census	10
Climate Change	10
Immigration	11
Guiding Principles	11
Vision 2026	12
Our Shared Vision	12
10X Goals	12
Operating Principles.....	13
Legislative Issue Matrix.....	14
10x Goal: Employment For All	16
10x Goal: Eliminate Homelessness	18
10x Goal: Eliminate Poverty and Hunger.....	20
10x Goal: Crime Free County	23
10x Goal: Healthcare for All	26
10x Goal: Accessible Infrastructure	30

Front Cover Images: “Livermore Winery” is a derivative of “[Tesla Road – Livermore Wine Area](#)” by Flickr user sfbaywalk used under CC BY 2.0. “Patterson House” is a derivative of “[Patterson House – Ardenwood Historical Farm](#)” by Flickr user tkksummers, used under CC BY 2.0. “Sunset on Lake Merritt” John Paul Marcelo, 2014, oil on wood, from the Alameda County Art Collection. “Fairgrounds” is a derivative of “[CIMG8433](#)” by Flickr user iamagenious, used under CC BY 2.0.

INTRODUCTION

Alameda County is characterized by rich geography, diversity, and culture. The County provides a range of services to residents. The Board of Supervisors' adoption of this two-year Legislative Platform supports the vision that Alameda County is recognized as one of the best counties in which to live, work, and do business.

The County provides for the basic needs of the most vulnerable populations and is responsible for health and human services for the entire County, including social safety net programs. The United States Congress and the State Legislature craft legislation regarding the County's mandated services and provide over 60% of the County's General Fund revenue, including Medicaid and Medicare charges for services. The County also provides municipal services such as police and road repair in the Unincorporated Area. To best serve the diverse needs of County residents, Alameda County needs dependable and equitable revenue streams and local control to provide flexibility in delivering services.

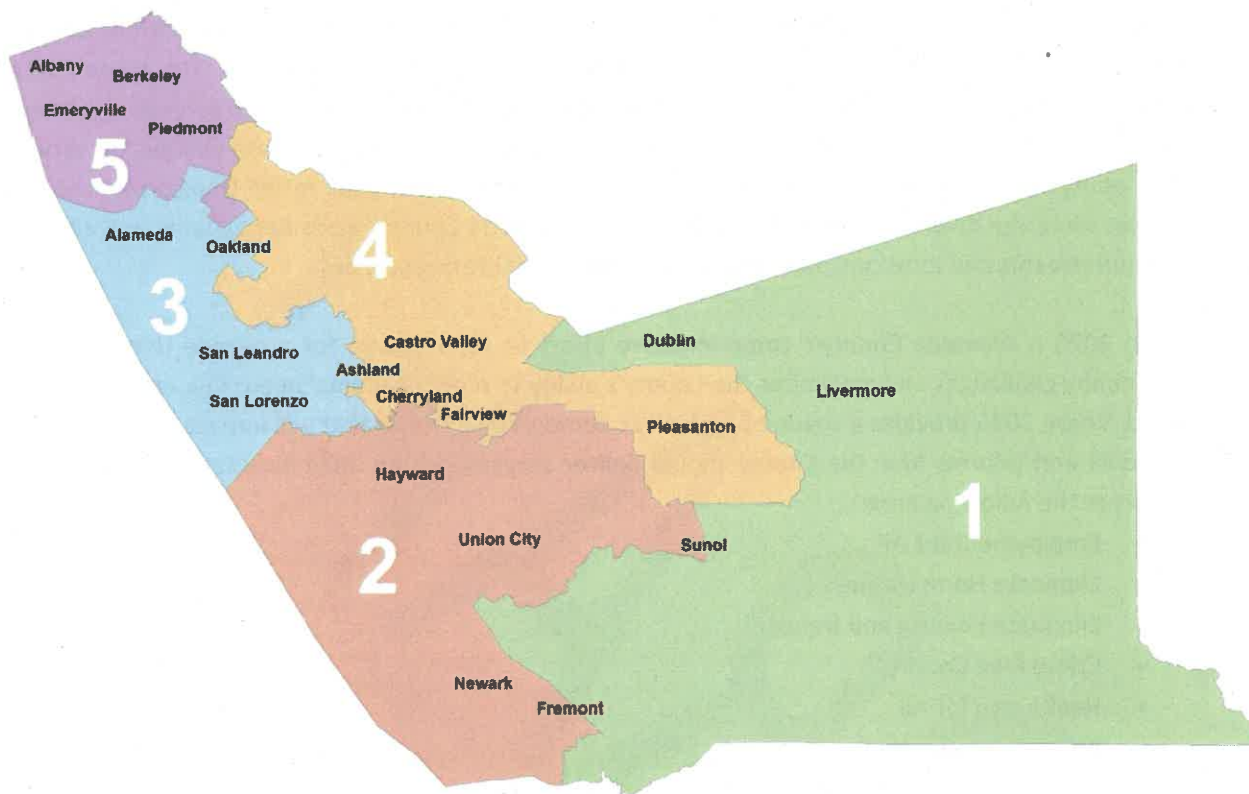
Vision 2026 is Alameda County's comprehensive effort to set a course for a decade that anticipates community challenges and maximizes the County's ability to meet residents' needs in a rapidly changing world. Vision 2026 provides a roadmap to look at demographic trends that will impact Alameda County residents and informs how the County should deliver services. Vision 2026 includes 10X goals for the County in the following areas:

- Employment for All
- Eliminate Homelessness
- Eliminate Poverty and Hunger
- Crime Free County
- Healthcare for All
- Accessible Infrastructure

Vision 2026 is the foundation for County actions and this Legislative Platform, including an emphasis on addressing homelessness, combating climate change, ensuring an accurate Census count, and protecting immigrants.

COUNTY OVERVIEW

Alameda County was established in 1853. The County's almost 821 square miles encompass a varied geography ranging from bay wetlands to rolling open spaces to hillside lakes and streams. Alameda is the seventh most populous county in California, with a dense urban corridor and suburban and rural communities. The County has 14 incorporated cities and several unincorporated communities.



Alameda County is governed by a five-member Board of Supervisors elected by popular vote. Countywide elected officials include the Auditor-Controller/Clerk-Recorder, Assessor, Treasurer-Tax Collector, District Attorney, and Sheriff/Coroner. The Board of Supervisors is responsible for providing policy direction, approving the County budget, and representing the County in a number of areas including its dependent special districts. The County Administrator advises, assists, and acts as an agent for the Board of Supervisors in all matters under the Board's jurisdiction.

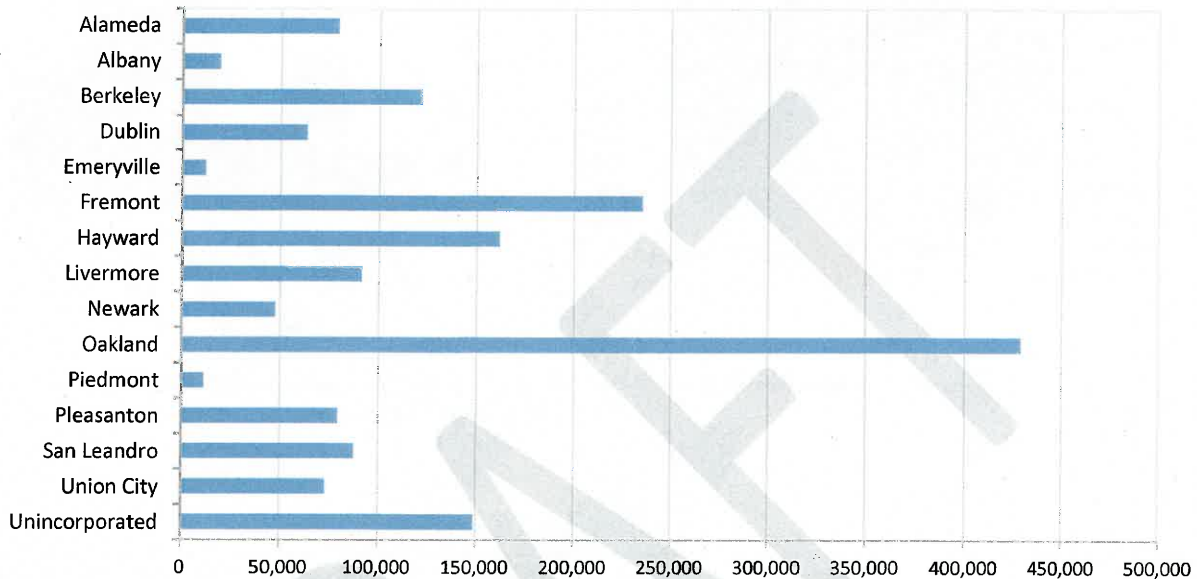
Alameda County Board of Supervisors

<i>District 1</i>	Scott Haggerty
<i>District 2</i>	Richard Valle
<i>District 3</i>	Wilma Chan
<i>District 4</i>	Nate Miley
<i>District 5</i>	Keith Carson

POPULATION

Alameda County's total population is estimated to be 1,660,202 as of January 2018, a 0.8% increase from the prior year. Oakland is the seat of County government and the largest city.

Population Of Alameda County Cities And Unincorporated Area

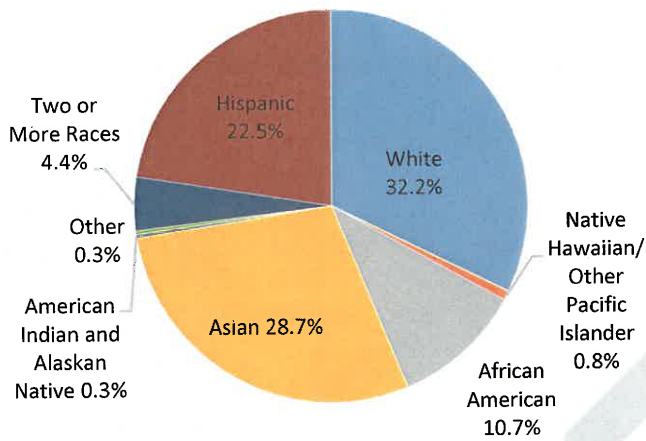


Source: California Department of Finance, January 2018

Alameda County is characterized by rich ethnic and cultural diversity. Population growth has occurred with the natural net increase of births over deaths, but also from substantial immigration, making Alameda County one of the most ethnically diverse regions in the Bay Area and the nation. Based on the 2010 Census, 31% of the population is foreign born. There is no majority racial or ethnic group in Alameda County. According to the California Department of Education, 61 languages were spoken by English language learners in Alameda County K-12 public school systems in 2017-2018.

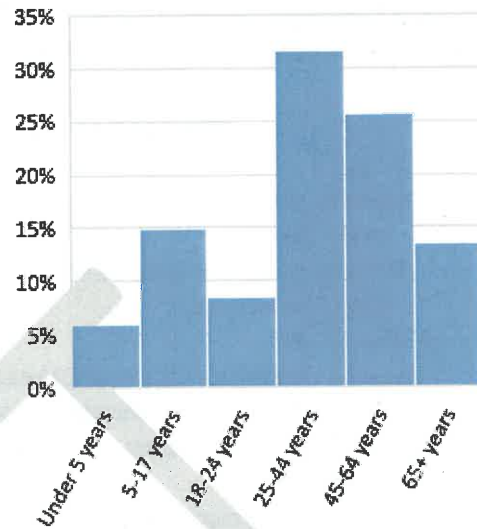
The U.S. Census Bureau's 2017 American Community Survey indicates that approximately 14% of the County's population is age 65 or older. This population is projected to increase almost 60% between 2018 and 2030 based on data from the California Department of Finance. The shifting demographics contribute to the County's forward thinking and implementation of Vision 2026.

Alameda County Race/Ethnicity



Source: U.S. Census Bureau, 2017 American Community Survey 5-Year Estimates

Alameda County by Age



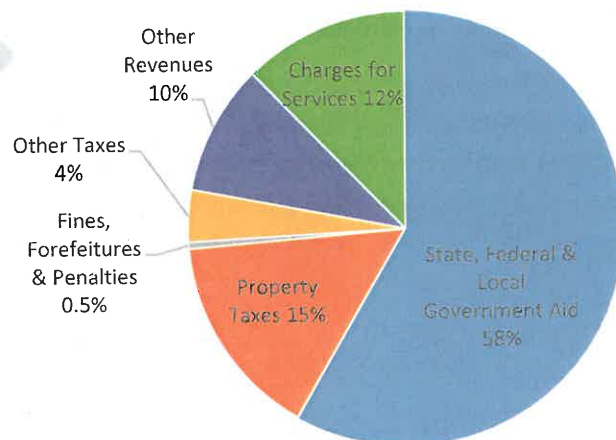
Source: U.S. Census Bureau, 2017 American Community Survey 1-Year Estimates

COUNTY BUDGET

The Board of Supervisors adopts a balanced budget by June 30th annually and begins the new fiscal year on July 1st. The FY 2018-2019 Final Budget includes appropriations of over \$3.4 billion. The Budget is divided into four program areas: Public Assistance, Health Care Services, Public Protection, and General Government.

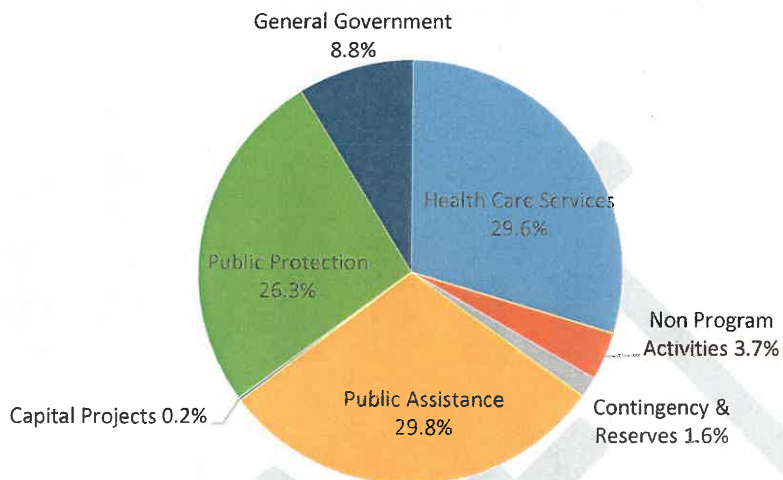
The County budget is financed by revenues from State, federal, and local governments; revenues from property and other taxes; charges for services; fines, forfeitures, and penalties; and other revenues. In FY 2018-2019, the County received over 60% of General Fund revenue from State and federal sources, including Medicaid and Medicare charges for services.

FY 2018-2019 Final Budget Financing by Source - General Fund



The majority of County appropriations are dedicated to providing essential services to residents. Together, Health Care Services, Public Assistance, and Public Protection account for over 85% of total County General Fund appropriations.

FY 2018-2019 Appropriation by Program - General Fund



Only 25% of General Fund revenue is discretionary revenue that the Board of Supervisors has the authority to allocate to meet County needs. Most of this discretionary revenue is used to fund the County's mandated share of costs for programs that receive federal and State funding. About 90% of the County's discretionary revenue comes from property taxes, although the County receives only about 15% of the property tax collected.

Distribution of a Property Tax Dollar

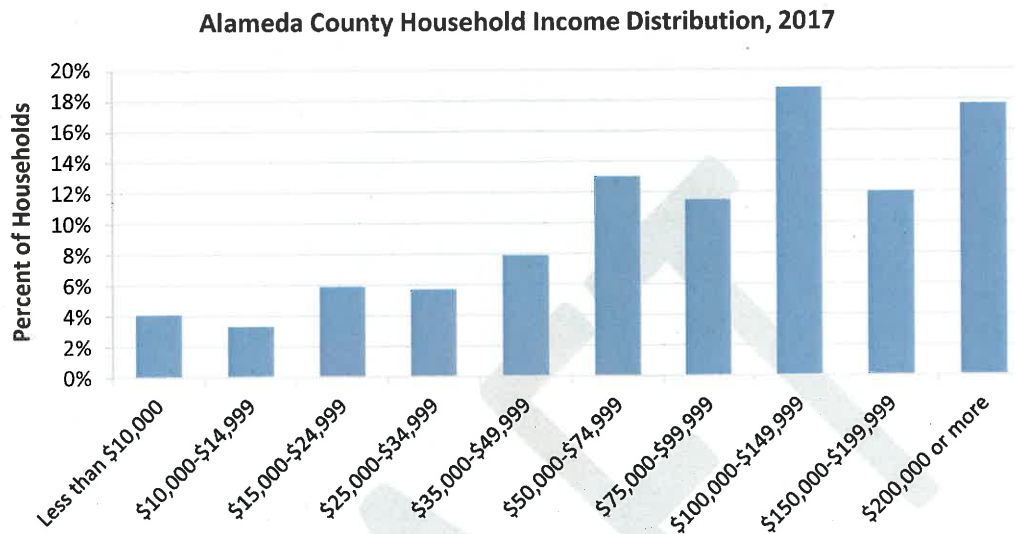


* Over time, redevelopment agencies' share of property taxes should be distributed to the other entities

This discretionary revenue funds many of the essential services for County residents, including social safety net programs, which are increasingly important given the rising cost of living in the County.

COST OF LIVING

According to the U.S. Census Bureau, Alameda County's median annual household income in 2017 was \$96,296 with an average household size of 2.8 persons.



Source: U.S. Census Bureau, 2017 American Community Survey 1-Year Estimates

According to the Massachusetts Institute of Technology's Living Wage Calculator, an adult with two children in Alameda County would need to earn \$80,370 annually (\$38.64/hour) to cover costs for housing, food, healthcare, transportation, child care, and taxes. This is equivalent to more than three full-time jobs at the California minimum wage of \$12/hour and almost \$60,000 higher than the federal poverty level for a family of three. Additionally, research from the California Budget and Policy Center finds that on average, a single mother in Alameda County would have to spend over 60% of her income to afford center-based child care for two children.

SAFETY NET PROGRAMS

Alameda County, along with its community-based partners, is the safety net for County residents. A partial list of services provided by the County that are dependent on State funding or funds passed-through from the federal government include California Work Opportunity and Responsibility to Kids (CalWORKs) and Temporary Assistance to Needy Families (TANF), CalFresh and the Supplemental Nutrition Assistance Program (SNAP), Medi-Cal, In-Home Supportive Services, Supplemental Security Income (SSI) and State Supplementary Payment (SSP), mental health services, meals to seniors and people with disabilities, subsidized child care, subsidized housing, homelessness programs, and employment services. According to the latest California Poverty Measure, a comprehensive poverty measure that accounts for the regional cost of living and California-specific safety net programs, 16.7% of Alameda County residents lived in poverty.

A recent California Poverty Measure report also found that social safety net programs helped keep almost three million California residents out of deep poverty and moderated the impact of poverty, especially for children. During times of economic hardships, many people rely on safety net services; however, even in times of economic expansion, safety net programs are critical to helping residents meet basic needs given the high cost of living in Alameda County.

1 in 4
County residents receives
direct assistance from the
County of Alameda

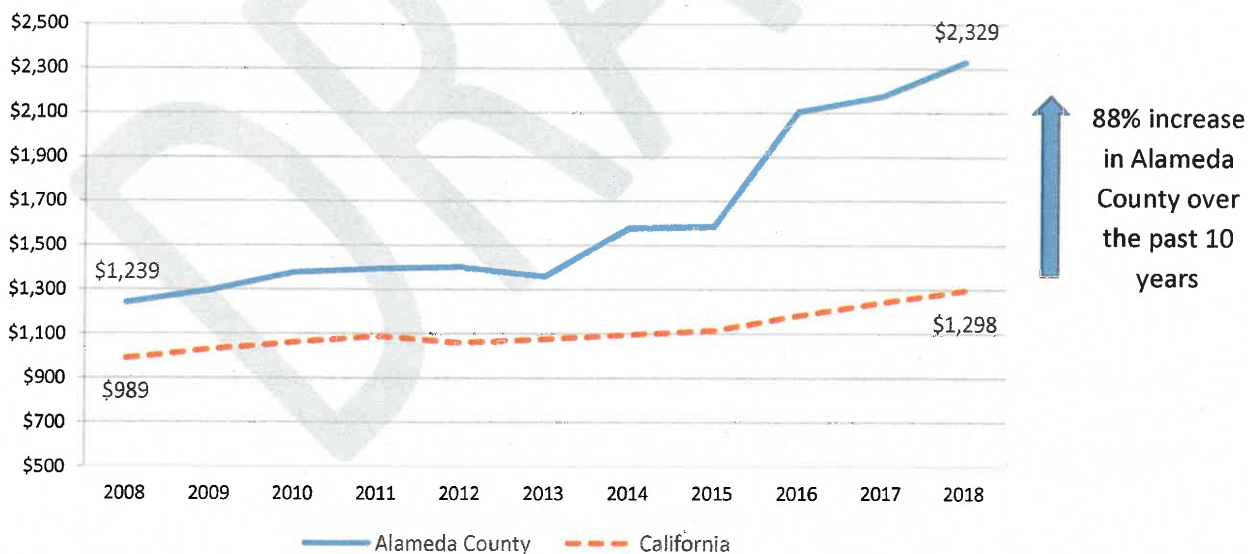


During the Great Recession, State funding for core health and human services programs was reduced dramatically (cutting over \$15 billion between 2008 and 2013). There have been some restorations over the past few years but many core public services remain underfunded following years of deep cuts.

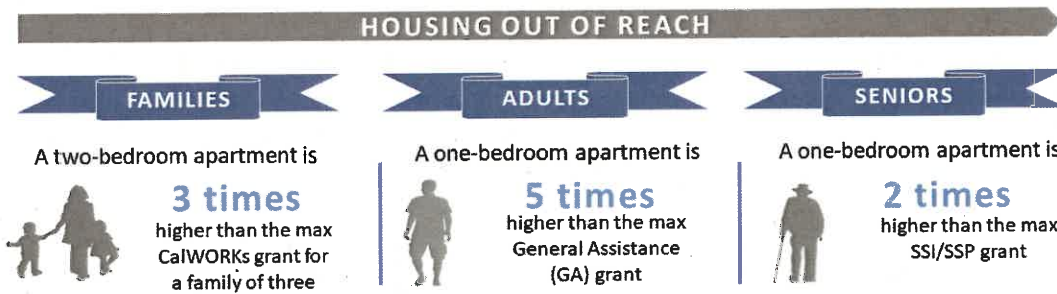
RIISING COST OF HOUSING

Alameda County's median home value was \$810,000 as of March 2018, up 11% from the previous year. Fair Market Rents have also grown 88% over the past ten years in the County for a two-bedroom apartment, outpacing income growth. According to data from the U.S. Department of Housing and Urban Development, Alameda County rents are growing significantly faster than the State average.

Monthly Fair Market Rent for Two-Bedroom Apartments 2008-2018



Source: U.S. Department of Housing and Urban Development, <https://www.huduser.gov/portal/datasets/fmr.html#2018>

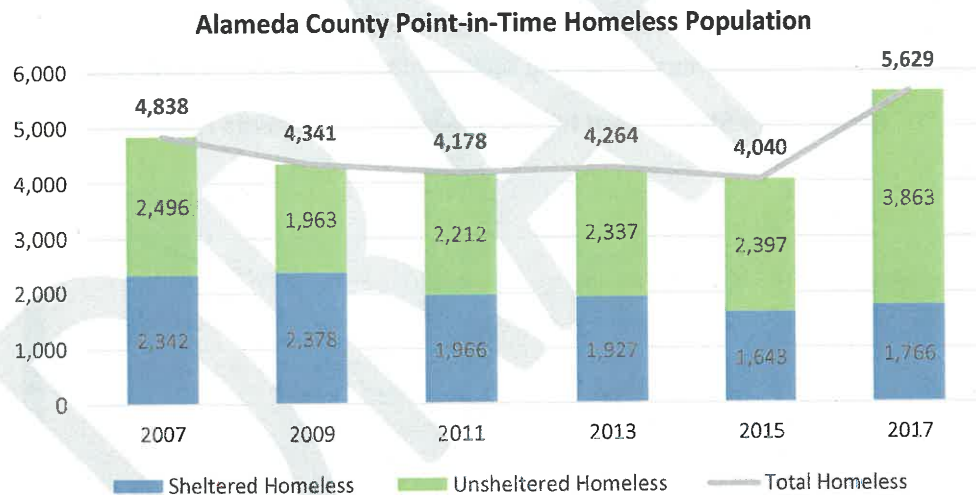


Sources: U.S. Department of Housing and Urban Development, Alameda County Social Services Agency

These demographic and economic trends pose specific short- and long-term challenges to County residents. State and federal support are necessary in addressing these broader economic trends.

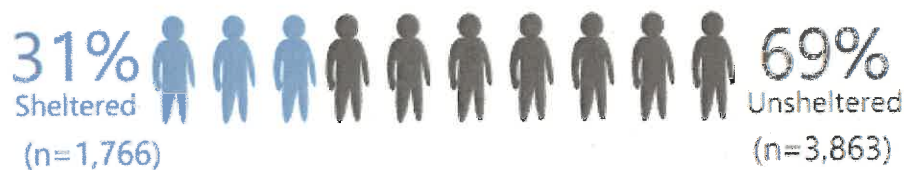
HOMELESSNESS

Given the rising cost of living and housing costs, homelessness has become an even more immediate and pressing issue. The 2017 Alameda County Point-in-Time Count showed an increase of nearly 40% since 2015, with over 5,600 individuals experiencing homelessness during a single 24-hour period.



69% of the County's homeless population are unsheltered – residing on the street or other outdoor locations, in vehicles, in encampments, or in abandoned buildings that are not suitable for human habitation.

2017 Sheltered/Unsheltered Homeless Population



Source: Applied Survey Research, 2017 Alameda County Homeless Count

In response to the increase in homelessness, the Board of Supervisors, in February 2018, formalized the County Homelessness Council as the single County leadership body to accelerate progress toward the Vision 2026 10X Goal of eliminating homelessness. To date, the Board of Supervisors has approved proactive measures including a 3-year \$340 million Homelessness Action Plan (including \$90 million in new one-time funding), a 3-year Unincorporated Area Homelessness Action Plan, a Shelter Crisis Declaration and Emergency Housing Ordinance, and applications for new one-time State funding. The 2019 Point-in-Time count will take place on January 30, 2019.

2020 CENSUS

In addition to accurately surveying the homeless population in the County, an accurate decennial Census count ensures Alameda County receives fair political representation and equitable share of federal and State funds. To achieve an accurate assessment of the population in the United States, the Constitution mandates a census every ten years. The data from the Census determine which states gain or lose representation in Congress, legislative boundaries in each state, and how billions of dollars in federal and State funding are distributed to communities. The U.S. Census Bureau will conduct the next Census in 2020.

Alameda County is one of the country's fifty "hardest-to-count" counties. Undercounted communities receive less funding, which results in fewer services for families in need. Census data is used to determine the distribution of nearly \$700 billion yearly in federal funds and programs. It is estimated that each person that is not counted represents a loss of \$1,950 per resident annually in federal funds. This amounts to \$19,500 per person over the next ten years or \$19.5 million for each 1,000 persons that are missed. These figures do not include State funding allocations that are also based on population data derived from the Census. A loss of funding due to an inaccurate count would affect the County's ability to provide safety net programs and provide services to residents.

CLIMATE CHANGE

Alameda County's hard-to-count population, including immigrants, people of color, low-income households, and others, are also more vulnerable to the effects of climate change. Climate change disproportionately harms economically vulnerable communities and individuals. Climate change is already impacting the County's residents today with increased droughts, fires, floods, and public health issues such as heat waves and wildfire smoke.

Counties are on the front lines of responding to impacts of global climate change and it is critical to ensure that State and federal resources and policies support the County's ability to respond immediately and plan for the future. At the same time, shifting to a clean energy economy provides opportunities for job growth and helps ensure a healthy environment for Alameda County residents. The Board of Supervisors actively supports equitable policies to secure resources to combat and prepare our communities for climate change impacts and to accelerate and intensify the actions and investments needed for a sustainable low carbon future.

IMMIGRATION

Alameda County, the most diverse county in the Bay Area and the fourth most diverse in the United States, is home to over half a million immigrants who live, work, attend school, and engage in everyday activities in our communities. According to the U.S. Census Bureau's 2017 American Community Survey, 1 in 3 Alameda County residents (33%) is an immigrant. This represents at least 550,000 naturalized U.S. citizens, lawful permanent residents, temporary migrants, humanitarian migrants, and other foreign-born residents who were not U.S. citizens at birth.

The County supports policies that protect and defend immigrants regardless of status. Additionally, the County supports policies prioritizing the needs and welfare of immigrants by supporting: comprehensive immigration reform; family unity; access to health care, social services, and educational and legal services; and preventing the loss of current status and benefits. The County supports policies that minimize the harmful local impacts of federal immigration policy including the ability to report crimes without fear of retribution and safe access to public places such as courthouses and schools. The County opposes efforts to restrict immigrant access to all necessary services and benefits, specifically opposing the expansion of the definition of "public charge" and family detentions.

GUIDING PRINCIPLES

The Vision, Mission, Values and Vision 2026 grew from extensive collaboration involving Alameda County leaders and other local officials to address County trends and promote communities that are vibrant, prosperous, safe, healthy, and inclusive. These shared visions can be achieved through the six 10X Goals.

VISION

Alameda County is recognized as one of the best counties in which to live, work, and do business.

MISSION

To enrich the lives of Alameda County residents through visionary policies and accessible, responsible, and effective services.

VALUES

- Integrity, honesty, and respect fostering mutual trust.
- Transparency and accountability achieved through open communications and involvement of diverse community voices.
- Fiscal stewardship reflecting the responsible management of resources.
- Customer service built on commitment, accessibility, and responsiveness.
- Excellence in performance based on strong leadership, teamwork, and a willingness to take risks.
- Diversity recognizing the unique qualities of every individual and his or her perspective.
- Environmental stewardship to preserve, protect, and restore our natural resources.

- Social responsibility promoting self-sufficiency, economic independence, and an interdependent system of care and support.
- Compassion ensuring all people are treated with respect, dignity, and fairness.

VISION 2026

OUR SHARED VISION



Thriving & Resilient Population

Individuals and communities are empowered to overcome adversities and supported so they can grow, flourish, and be self-sufficient.



Safe & Livable Communities

Safe and secure communities with accessible infrastructure including open space and recreational facilities and facilitates the availability of diverse and affordable housing.



Healthy Environment

Comprehensive utilization of environmentally sustainable practices that conserve natural resources while reducing pollution and harm to the environment.



Prosperous & Vibrant Economy

Emergence, robust growth, and profitability of all businesses across a diversity of sectors that also create employment opportunities for all residents.

10X GOALS

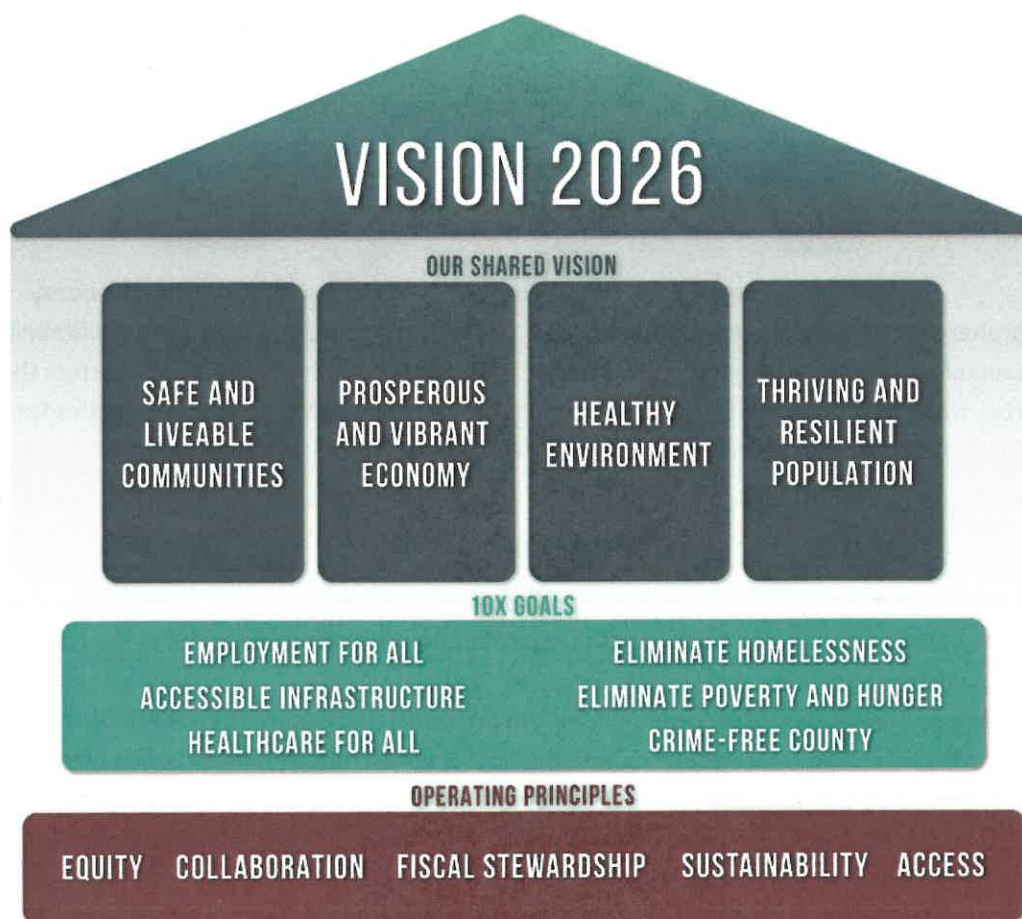
- ❖ **Employment for All:** Deliver services through highly skilled, agile, and responsive County employees and pursue policies and programs that support full employment of the hard to employ throughout the County.
- ❖ **Eliminate Homelessness:** Pursue policies and programs that ensure the availability of diverse and affordable housing for all residents with the goal of eliminating homelessness in Alameda County.
- ❖ **Eliminate Poverty and Hunger:** Pursue policies and programs that ensure all residents' basic needs are met including eliminating poverty and hunger, while building resiliency and self-sufficiency among vulnerable populations.
- ❖ **Crime Free County:** Implement robust criminal justice strategies that lead to a crime free county through responsive and innovative community engagement while providing effective support for victims and reentry populations.
- ❖ **Healthcare for All:** Pursue policies and programs that ensure healthcare for all with a focus on providing preventive and supportive services to vulnerable populations.

- ❖ **Accessible Infrastructure:** Implement smart, accessible, and adaptive public infrastructure that enable the deployment of future technologies while optimizing the returns on investments of existing infrastructure.

OPERATING PRINCIPLES

Alameda County's Vision 2026 Operating Principles are the foundational tools necessary to achieve our shared vision for Alameda County.

- Access
- Collaboration
- Equity
- Fiscal Stewardship
- Innovation
- Sustainability



For more information on Vision 2026, visit: <http://vision2026.acgov.org>.

LEGISLATIVE ISSUE MATRIX

The following matrix sets out Alameda County's priority issues in the Vision 2026 framework of Shared Visions, 10X Goals, and Operating Principles.

Issue	Summary/Action Item	State/Federal
Revenue Adequacy and Stability	<p>Support dependable, predictable, sustainable, and equitable revenue streams and allocation methodologies.</p> <p>Ensure that new and existing programs include funding to sufficiently support caseload growth and other administrative costs and costs are a net neutral to the County.</p> <p>Oppose transfers of responsibilities to counties without adequate funding and efforts to eliminate or redirect revenues currently dedicated to local government.</p>	State/Federal
Local Governance	<p>Maintain adequate authority, local discretionary control, and flexibility to meet the County's dual role as agent of the State and as a local service provider.</p> <p>Maintain ability to set State and local standards that exceed federal standards (e.g. fuel economy standards, clean air and water, greenhouse gas, human rights).</p> <p>Support efforts that enhance funding flexibility, incorporate the increased costs and needs for mandated programs, and allow for additional revenue raising authority for counties.</p> <p>Support efforts that provide the County with flexibility in negotiating pension benefits that maintain fiscal stability for the County.</p> <p>Support fiscally viable local incorporation efforts where significant resident interest exists, including State policies to restore the fiscal viability of city incorporations.</p>	State/Federal
Immigration	<p>Support policies that minimize the harmful local impacts of federal immigration policy including the protection of clients' information, the ability to report crimes without fear of retribution, and safe access to public places such as courthouses and schools.</p> <p>Support Comprehensive Immigration Reform that provides a clear pathway to citizenship that encourages family reunification and opportunities for workers and employers.</p> <p>Oppose efforts to restrict immigrant access to all necessary services and benefits, specifically opposing the expansion of the definition of "public charge" and family detentions.</p>	State/Federal
2020 Census	Secure adequate funding to ensure a complete and accurate count of all Alameda County residents, especially the hard-to-count	State/Federal

	<p>populations, to ensure equitable federal and State funding for Alameda County.</p> <p>Support increased data privacy protections necessary for the utilization of the new digital Census platform.</p> <p>Oppose the inclusion of a citizenship question or other questions on the Census questionnaire that may discourage full participation.</p>	
Race & Equity	Support policies and increased funding that seek to reduce racial and ethnic disparities in the County.	State/Federal
Regulatory Stability	<p>Protect existing laws and protections from being dismantled or not implemented (e.g. clean air and water, Endangered Species Act, human rights, healthcare, safety net programs, and supportive services).</p> <p>Eliminate and oppose imposition of undue burdens on existing rights and privileges.</p>	State/Federal
County Workforce Training	<p>To serve Alameda County residents to the best of our ability, County employees must have ample opportunity to receive the latest workforce training and education.</p> <p>New State and federal policies/procedures should include reasonable timelines for implementation and funding for training.</p>	State/Federal

10X GOAL: EMPLOYMENT FOR ALL

Employment for All: Deliver services through highly skilled, agile, and responsive County employees and pursue policies and programs that support full employment of the hard to employ throughout the County.

Issue	Summary/Action Item	State/Federal
Expand Opportunity		
Inclusive Employment Opportunities	<p>Support employment opportunities, such as Competitive Integrated Employment, and reduce barriers for vulnerable populations including people with disabilities, veterans, older adults, at-risk and foster youth, and reentry populations.</p> <p>Support employment programs that promote access to jobs with fair and sustainable wages, predictable hours, paid sick leave, and career pathways.</p> <p>Address racial, cultural, and economic disparities in employment outcomes.</p>	State/Federal
Prepare for the Future		
Educational Attainment	<p>Invest in, and ensure access to, quality education for the 21st century workforce including: early care and education, STEAM (Science, Technology, Engineering, Art, and Mathematics) programs, high school that prepares graduates for college and career, Career Technical Education adult education programs, certificate programs, pre-apprenticeship and apprenticeship programs, and affordable post-secondary education.</p> <p>Ensure education equity so that educational attainment is available to all, especially vulnerable populations such as re-entry populations, CalWORKs recipients, individuals with disabilities, English Language Learners, immigrant/refugee communities, older adults, foster youth, and veterans.</p>	State/Federal
Regional Workforce Development	<p>Support and expand programs that preserve the Workforce Investment and Opportunity Act (WIOA) funding and other programs that increase the number of qualified workers in growing regional sectors of the local economy, such as health care, technology, logistics, and food service.</p> <p>Support resources and policies that align with the workforce development goals and objectives outlined in the Alameda County Workforce Development Board's (ACWDB) Regional and Local Plan two-year modification, including supporting entrepreneurial endeavors of small local business, families, and communities.</p>	State/Federal

EMPLOYMENT FOR ALL

Employment Support Services	Invest in affordable, quality, family-centered, developmentally-appropriate, and high-quality early care and education, with a special focus on increased infant care, workforce supports – including transportation and ancillary expenses – and facilities, and technology/data tracking development.	State/Federal
Worker Health and Safety	Support policies and funding that promote worker health and safety, including paid sick and family leave, meaningful regulations of dangerous chemicals and toxins, and enforcement of statewide worker health and safety laws.	State/Federal

10X GOAL: ELIMINATE HOMELESSNESS

Eliminate Homelessness: Pursue policies and programs that ensure the availability of diverse and affordable housing for all residents with the goal of eliminating homelessness in Alameda County.

Issue	Summary/Action Item	State/Federal
Affordability		
Affordable Housing	Support efforts to create a permanent source of funding for affordable housing and rental assistance to enable localities to respond to current and increased needs including special consideration for vulnerable populations.	State/Federal
Long-Term Services and Support	Support policies and funding that continue the “Money Follows the Person” model to fund individuals who move from institutionalized settings to the community, which includes developmentally disabled, foster youth, and justice-involved individuals.	State/Federal
Availability		
Funding to Prevent and End Homelessness	Increase ongoing funding for housing programs/supports and wraparound services to quickly move homeless individuals into permanent and stable housing and help them remain housed. Increase one-time funding to help address the homelessness crisis in a flexible manner.	State/Federal
Prevent Displacement of Community Residents	Support efforts to preserve and rehabilitate existing housing and preserve housing for vulnerable populations that are at risk of becoming homeless—including group living facilities. Limit and ameliorate resident displacement by protecting against foreclosure and supporting tenants’ rights in foreclosed properties. Support homeowner and tenant protections and rights including preventing unfair eviction for families and individuals that are victims of abuse, financial abuse, or neglect. Support housing anti-discrimination efforts—including immigrants.	State/Federal
Housing as Health	Support policies and funding that support “housing first” in order to address and meet the needs of people who are homeless or at risk of homelessness.	State/Federal
Maintain and Rehabilitate Homes	Support funding and efforts to preserve and rehabilitate existing housing that is safe and healthy including the proper maintenance and inspection of rental units.	State
Individuals and Families Experiencing Homelessness	Increase funding for supports and services for persons experiencing homelessness, including emergency shelter, rapid re-housing, transitional housing, and permanent supportive housing.	State/Federal

ELIMINATE HOMELESSNESS

Land Use		
Urban Density	Incentivize and support policies and regulations that promote smart growth, infill, and dense affordable housing development.	State
Innovative Housing	Develop high-level land use policies to allow innovative and pilot-type projects to alleviate homelessness.	State

ELIMINATE POVERTY AND HUNGER

10X GOAL: ELIMINATE POVERTY AND HUNGER

Eliminate Poverty and Hunger: Pursue policies and programs that ensure all residents' basic needs are met including eliminating poverty and hunger, while building resiliency and self-sufficiency among vulnerable populations.

Issue	Summary/Action Item	State/Federal
Basic Needs		
Access to Benefits	Support policies and systems that make it easier for individuals and families to access, apply for, utilize, retain, and recertify for benefits, including CalWORKs/TANF, CalFresh/SNAP, Medi-Cal/Medicaid, SSI/SSP, IHSS, and other supportive services, including housing and childcare.	State/Federal
Nutrition	Support programs and approaches that improve, and ensure equitable access to, fresh, nutrient-rich foods for all communities in alignment with the "food as medicine" philosophy, and address food "deserts" in community plans and development.	State/Federal
Asset Building	Expand programs and support policies that promote economic stability and wealth building, such as the Earned Income Tax Credit and other tax credits for low-income individuals and families; eliminating the asset limits for public benefits; expanding access to savings programs, credit, and capital; alleviating debt; and protecting savings and assets. Increase reputable financial institutions in underserved communities and restrict predatory financial products such as payday lending. Invest in entrepreneur training and expand opportunities to launch new businesses, with special emphasis on opportunities for women, minorities, and people with disabilities.	State/Federal
Wages and Income	Support policies that allow individuals and families to earn an income that allows for financial stability, which includes livable wages, efforts to close gender and racial wage disparities, and combatting wage stagnation and compression.	State/Federal
Land Use	Create objective targets to allow all County residents to get basic needs met within their own communities, near transit, services, and jobs.	State
Vulnerable Populations		
In-Home Supportive Services (IHSS)	Support policies and adequate funding for IHSS to ensure recipients can find care that allows them to remain safely in their own homes. Oppose cost shifts to counties.	State/Federal

ELIMINATE POVERTY AND HUNGER

Child and Family Stability	<p>Support legislation and funding that reduces barriers and enhances services and programs for children and youth who are at-risk or are experiencing or have experienced neglect, abuse, or exploitation—including supports for their caregivers.</p> <p>Advocate for innovative funding streams to adequately support the well-being of children who were in the foster care system or are at risk of being in the foster care systems including transition-age youth and Commercially Sexually Exploited Children (CSEC).</p> <p>Support funding to successfully implement the Continuum of Care Reform and Family Resource Approval to fund and support stable placements for children removed from their homes.</p> <p>Ensure that the Alameda County's child support program receives an equitable funding allocation from the California Department of Child Support Services and improve the collection of child support orders and stabilization of household income.</p>	State/Federal
Older Adults	<p>Support policies and funding for enhanced coordination of services for older adults, including those with disabilities, to promote independent living, protect against financial and physical abuse, and safeguard against neglect and exploitation.</p>	State/Federal
Individuals with Disabilities	<p>Support policies, funding, and programs that preserve, support, and expand services and opportunities for individuals with disabilities.</p> <p>Preserve and support the Americans with Disabilities Act and protect civil rights.</p>	State/Federal
Boys and Men of Color and Fathers	<p>Support policies and funding that focus on addressing critical challenges and risk factors facing boys and men of color and increase opportunities to improve long-term outcomes.</p> <p>Support and promote initiatives that create father-friendly practices that encourage increased male involvement in the intellectual, emotional, social, and financial well-being of children and families.</p>	State/Federal
Service Delivery		
Safety Net Programs and Supportive Services	<p>Restore critical safety net benefits, increase flexibility, remove barriers to participation, expand programs that work, and simplify/streamline processes and systems to ensure access to public benefits, including for immigrants, refugees, and asylees.</p> <p>Encourage cooperative, multi-jurisdictional, public and private interagency collaboration for funding, planning, and provision of locally identified, linguistically and culturally appropriate services.</p>	State/Federal

ELIMINATE POVERTY AND HUNGER

Foster Youth and Former Foster Youth	Expand and build support services and improve systems change under Title IV-E. Loosen barriers to reimbursement eligibility under Medi-Cal Administrative Activity Claiming.	State/Federal
Veterans Services	Support programs and funding that assist veterans in accessing benefits, housing, and stable employment. Increase funding for the County Veterans Services Offices (CSVOs).	State/Federal

10X GOAL: CRIME FREE COUNTY

Crime Free County: Implement robust criminal justice strategies that lead to a crime free county through responsive and innovative community engagement while providing effective support for victims and reentry populations.¹

Issue	Summary/Action Item	State/Federal
Community Safety		
Expansive Behavioral Health	Increase funding for, and access to, mental health and substance use disorder treatment services, in and out of incarceration, including promoting ways to divert those with mental illness out of the criminal justice system.	State/Federal
Cannabis	Improve licensing requirements to allow a larger role for local jurisdictions. Reduce public safety threats such as those associated with cannabis usage and the cash nature of the industry. Support funding to research the impacts of cannabis legalization and usage.	State/Federal
Victims Support		
Victims of Crime	Increase funding to expand services to all victims of crime, especially violent crime, to strengthen the process for seeking and securing restitution, and to aggressively collect restitution.	State/Federal
Access to Courts	Support policies that increase accessibility for court-related services to vulnerable populations including at-risk youth, foster youth, immigrants, individuals with disabilities, those with behavioral health needs, and older adults.	State/Federal
Human Exploitation and Trafficking (H.E.A.T.)	Enhance services to victims of trafficking and sexual exploitation, especially minors, and increase community and law enforcement education and training.	State/Federal
Reduce Gun Violence	Evaluate and propose changes in the law that reduce the unsafe availability of firearms, the unlawful use of firearms, and gun violence to protect innocent bystanders and children from mutual gun combat.	State
Consumer, Environmental, and Worker Protections	Increase efforts to provide consumer, environmental, and worker protections particularly around labor trafficking.	State/Federal

¹ Department and Agency staff continue to explore policy issues. If any new issues are recommended by staff, they will be brought forward through the PAL approval process.

Prevent Domestic Violence	Support legislation and funding to increase domestic violence prevention and services for domestic violence victims.	State/Federal
Reentry Support		
Successful Reentry	Remove barriers to reintegration including barriers to education, employment, housing, and health and social services. Increase rehabilitation services both for in-custody defendants and those who have been released. Allow more options to reduce court supervision periods. Support programs designed to restore rights, including reduction, dismissal, expungement, and/or sealing of criminal records for those who have completed their criminal sentences.	State/Federal
Community-Based Support for Formerly Incarcerated	Fund expansions and detailed evaluations of community programs and partnerships such as health and social services that aid incarcerated and formerly incarcerated individuals through their rehabilitation efforts and reentry process.	State
Probation Success Rates	Support funding and policies that continue to improve probation success rates and increase public safety; reduce victimization and admission to prisons; incorporate the use of automation to enable monitoring; and focus resources on evidence-based case management through the use of risk and needs assessment tools, service referral and quality controls, and automated case management. Increase funding to support higher risk clients for redirected adults and youth.	State/Federal
Criminal Justice Strategies		
Technology Informed Tools	Support increased funding to support increased costs associated with technological advancements in the judicial process such as body worn cameras. Support efforts to create a streamlined policy and funding model to eliminate current DNA testing backlog and prevent future backlogs. Require ALL sexual assault kits be submitted for testing in a timely expedited manner.	State/Federal
Reduce Serious/Violent Crimes	Support more coordinated, regional, multi-disciplinary, and multi-agency efforts to combat violence and crime.	State/Federal
Public Safety Realignment	Reduce recidivism by realigning lower level offenders to enhanced and strengthened community corrections and rehabilitation	State/Federal

	programs aiding both incarcerated and released individuals on their road to healthy and successful reintegration. Incentivize evidence-based supervision strategies.	
Diversion Programs	Support proven diversion strategies such as Collaborative Courts and other programs designed to prevent people, including juveniles, from coming into the criminal justice system. Promote restorative justice programs and policies.	State/Federal
Alternative Programs to Incarceration	Advocate for continued funding for alternative programs to incarceration. Increase funding for rehabilitation services that are alternatives to incarceration and focus on recovery to reduce recidivism.	State
Pretrial Services	Support policy and funding to develop a robust evidence-based pretrial risk assessment tool, focusing on positive and strength-based services to determine a client's eligibility for release pre-arraignment, while also addressing the safety needs of the community.	State
Juvenile Justice		
Youth Empowerment and Juvenile Delinquency Prevention	Increased funding for stronger intervention and prevention programs for all youth including those who are victims of trafficking or sexual exploitation.	State
Youth Violence Prevention and Education Programs	Funding for collaborative violence prevention and education programs and/or counseling programs for youth who are at risk of or have been involved in crime.	State
Emergency Management		
Emergency Preparedness and Response	Support funding for emergency preparedness and management prioritizing inclusion of vulnerable individuals including seniors and those with disabilities.	State/Federal

10X GOAL: HEALTHCARE FOR ALL

Healthcare for All: Pursue policies and programs that ensure healthcare for all with a focus on providing preventive and supportive services to vulnerable populations.

Issue	Summary/Action Item	State/Federal
Healthy Community		
Health Equity	Support funding and initiatives to address racial/ethnic health disparities and other inequities that are due to the social determinants of health.	State/Federal
Behavioral Health Services	Improve access to, and funding for, mental health and substance use services for all populations. Support the development of a statewide behavioral health delivery system that adequately funds comprehensive services, supports certified peer models, and tailors services for unique populations, including older adults and justice-involved populations.	State/Federal
Older Adults	Coordinate an integrated system of care to preserve, support, and expand programs and policies that promote healthy aging and aging-in-place.	State/Federal
Adapting to Climate Change Impacts	Support policies and funding for local governments, communities, and businesses to prepare and adapt to climate change impacts such as wildfire, heat, and sea level rise while building resilient communities. Ensure special focus and equitable solutions for most vulnerable communities.	State/Federal
Emergency Medical Services	Support adequate funding for Local Emergency Medical Services Agencies (LEMSA) and promote policies that support innovation and flexibility for LEMSAs to serve their populations, including through Citizen Activated Care and Crisis Intervention Training programs.	State
Healthy Education	Promote healthy school and early care and education environments addressing physical, mental, and environmental health and full-services in community schools.	State/Federal
Environmental Health		
Climate Change Mitigation	Support equitable policies to regulate greenhouse gases as pollutants, to develop robust carbon markets, and to provide funding to local governments to combat climate change. Implement the Paris Climate Agreement.	State/Federal

HEALTHCARE FOR ALL

	Aggressively develop renewable energy targets to keep fossil fuels “in the ground” including the development of utility-scaled solar projects and other alternative energy sources.	
Natural Resource and Public Health Protection	Support policies and regulatory structures that protect public lands and natural ecosystems from exploitation to ensure the public’s health and access to clean air, water, and land for all communities.	State/Federal
Safe and Healthy Housing	Develop new housing located at safe distances from environmental impacts that harm the public and workers’ health and quality of life.	State/Federal
Emerging Public and Environmental Health	Support policies and funding to enforce State laws and regulatory authority in the areas of food safety, toxic substances, vector control, waste management, green chemistry, lead, air and water quality, environmental contaminants, and other emerging threats to the public’s health.	State
Health Care Safety Net		
Health Care Safety Net	Support policies and funding to promote a robust health care safety net that offers high-quality medical, dental, behavioral, preventive, aging, and disability health care services and maintains the Children’s Health Insurance Program (CHIP). Support efforts to increase safety net provider reimbursement rates. Promote workforce development to address the needs of an aging population. Ensure resources are adequate, adaptive, locally relevant, and linguistically and culturally appropriate.	State/Federal
Access to Health Care	Oppose the repeal or destabilization of the Affordable Care Act and other actions that adversely impact health care access, quality, or affordability. Support policies and funding to increase equitable access to health care for all Alameda County residents, regardless of socioeconomic or immigration status.	Federal
Behavioral Health	Support the development of a statewide peer and family support specialist program as part of the State’s comprehensive mental health delivery system. Support mental health parity. Increase funding to build a competent geriatric behavioral health workforce to meet the demands of a rapidly aging population.	State/Federal

Preventive Health Care		
Maternal and Early Child Health	Support increased funding for maternal and early child health through the Title V Maternal and Child Health Services Block Grant and local access to Title XIX funding. Support full implementation of comprehensive perinatal services for all Medi-Cal eligible women. Support funding to address racial/ethnic disparities, particularly African-American infant and maternal mortality rates. Promote the initiation of prolonged breast feeding.	State/Federal
Reproductive Health	Promote comprehensive sex education. Ensure access to comprehensive and low-cost reproductive health services, including family planning and abortion services, full funding of the Title X Family Planning Program, and provision of accurate information for women and men.	State/Federal
Screening and Prevention	Support policies and funding for chronic and infectious disease prevention, screening and detection, outreach and education, treatment, and ongoing disease management programs.	State/Federal
Integrated Health Care		
Quality Care Infrastructure	Incentivize and support innovative opportunities to improve and enhance the quality and availability of care in a system of care health infrastructure that promotes collective, coordinated services for individuals, children, and families (such as the Whole Person Care Pilot).	State/Federal
California Children's Services (CCS)	Support continued funding for CCS as a system of care in counties not transitioning to the Whole Child Model. Support policies that maintain CCS standards and quality case management in all counties and ensure that all changes to CCS proceed in the best interest of the child served.	State
Place-Based Health Services		
Community Health Centers	Support legislation and funding that preserves and increases funding for both public and non-profit community health centers.	Federal
Public Health		
Substance Use Prevention	Support funding for local substance use outreach, education, and prevention programs for cannabis, alcohol, and other substances. Support funding and policies that promote harm reduction, increase access to opioid overdose reversal treatments, and expand medication-assisted treatment strategies. Support funding and policies to prevent impaired driving. Support funding to study the health impacts of cannabis use.	State/Federal

Tobacco Prevention	Support policies and funding that mitigate the health impacts of tobacco including health equity, language access, and cultural competency standards in all tobacco control agencies, programs, processes, and educational outreach.	State/Federal
Public Health Infrastructure	Support policies and funding for a robust public health infrastructure that supports counties in meeting their essential public health duties through investments in workforce, information systems, and local agencies to plan for, assess, and respond to emerging and urgent public health needs.	State/Federal
Public Health	Support broad-based public health including reducing and preventing communicable diseases, encouraging immunization and adequate access to vaccines, preventing health care associated infections and antibiotic resistance, ensuring adequate resources for public health laboratories and services, and adequate funding for pandemic response and local preparedness programs. Support policies and funding to reduce health disparities, reduce disease-based stigma, and promote culturally competent outreach, education, and treatment.	State/Federal

10X GOAL: ACCESSIBLE INFRASTRUCTURE

Accessible Infrastructure: Implement smart, accessible, and adaptive public infrastructure that enables the deployment of future technologies while optimizing the returns on investments of existing infrastructure.

Issue	Summary/Action Item	State/Federal
Accessibility and Mobility		
Public Transit	Support funding to increase the accessibility, reliability, and affordability of public transit options, including the reauthorization of federal funds and the flexibility of Transport Mobility Management.	State/Federal
Safety and Security		
Regional Communication	Enforce and fund regional communications plans, equipment, training, and services.	State/Federal
Maintenance and Preservation		
Infrastructure Maintenance	Secure funding to support the County's infrastructure needs, expand capital investments vital to program and economic development including roadway rehabilitation and maintenance, and maintain the physical assets that house public programs. Support policies, legislation, and funding that increase safety and pavement rehabilitation, including the reauthorization and stabilization of federal Highway Trust Fund and a dedicated funding source for all rural road safety projects.	State/Federal
Water Conservation and Security	Support policies and funding to promote water conservation, provide safe and clean drinking water for all communities, and ensure water supply continuity in a future of climate disruption.	State/Federal
Smart Infrastructure		
Data and Data Sharing	Support secure and meaningful data exchanges between systems and services. Support data security and privacy efforts and utilize data to better provide services to County residents. Oppose policies that mandate local/State agencies provide an individual's information for immigration enforcement.	State
Sustainable Environment	Develop sustainable built environments that prevent, reduce, and mitigate negative environmental impacts and provide ample open green space and safe thoroughfares, housing, early care and other education facilities, and community businesses.	State/Federal

ACCESSIBLE INFRASTRUCTURE

	Support legislation and regulations that promote complete streets and other transportation modes through development of bicycle, pedestrian, and transit facilities.	
Upgrading Commercial Corridors	Secure resources to upgrade streetscapes, transit access, consolidated parking, and activated open space.	State
Regional Planning	Consider new policies to create a more equal jobs/housing balance.	State
Adaptive Infrastructure		
Accessibility	Community and program planning should include, protect, and support policies that promote design to ensure accessibility of spaces for people of all abilities, ages, and modes of mobility.	State/Federal
Climate Change Adaptation	Support funding that advances use of natural geographical elements to adapt for climate change.	State/Federal
Clean Energy	Support legislation and funding for: research and deployment of clean energy, energy efficiency, and storage technologies; local control over deployment of new energy generation and distribution models; and equitable and affordable clean energy access for all community members.	State/Federal
Clean Transportation	Support legislation and funding for: research and deployment of clean transportation fuels, technology, and infrastructure; local control over deployment; and equitable and affordable access to all community members.	State/Federal

