

# ORAL PRESENTATION

# Alameda County Board of Supervisors COVID Update

February 9, 2021



Alameda County  
Health Care Services Agency



Alameda County Public Health Department  
Celebrating Healthy People in Healthy Communities

# Presentation Overview

- Local COVID-19 Epidemic
- Shelter in Place
- COVID-19 Variants
- Vaccine Update



# Alameda County COVID-19 Epidemic

- Daily case rate is 22 per 100,000 and falling
  - Adjusted Case Rate is 18 (Purple Tier)
  - From 250 to 500 cases reported daily over past 10 days
- Overall test positivity 5%
  - 7.9% in lowest HPI quartile
- Hospitalized COVID cases 279 and falling
  - 88 in ICU
- Expect more surges in 2021
  - Goal still to flatten the curve, slow the spread and protect health care system
  - As vaccine rates and immunity rises, surges will wane



# Alameda County Shelter in Place

- Currently in Purple Tier
  - Timeline for Red Tier uncertain – likely weeks
- Supreme Court ordered State to allow indoor worship on 2/5
  - Can be limited to 25% of capacity
- K-6 schools with approved safety plan could open as of 2/5
  - State school guidance in effect for Alameda County
  - Vaccination of staff and students not required for safe school operations



# Alameda County COVID-19 Variants

- AC investigating all reports of CDC variants of concern
- 7 known UK variant cases to date
  - All appear to be travel related
- No known South Africa or Brazil variants reported here yet
- West Coast variant has been detected here; over 1000 reported across CA
- No changes to local prevention and vaccine policy related to variants
  - FDA: Pfizer and Moderna vax should be effective against these variants
  - Diligent use of face coverings and physical distancing the most important measure
  - Continue to vaccinate as fast as supply allows



# Vaccines



Alameda County  
Health Care Services Agency



Alameda County Public Health Department  
Celebrating Healthy People in Healthy Communities

# Alameda County in Phase 1b



**Alameda  
County  
is now  
vaccinating:**

- Health Care Workers
- People in Long Term Care Facilities
- People ages 65+
- Food/Agriculture/Restaurant/Grocery workers
- Emergency Services workers
- Education/Childcare workers



**Within each  
category,  
prioritizing:**

- Older adults
- MediCal or Uninsured
- Areas with very high COVID-19 case rates (HPI Q1 + priority zip codes)
- People with direct contact with clients or the public at work
- People who cannot work from home
- People with limited mobility

**Appointments by invitation**

**Sign up for notification:**

<https://covid-19.acgov.org/vaccines>



Alameda County  
Health Care Services Agency



Alameda County Public Health Department  
Celebrating Healthy People in Healthy Communities

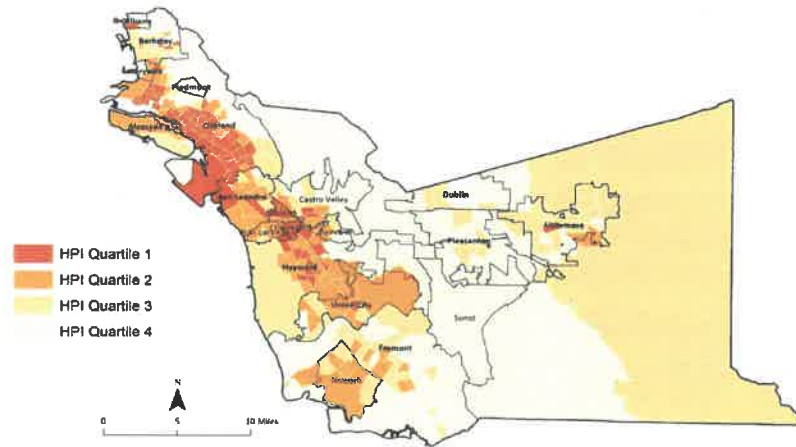


# Why are we doing this all at once?

- The State has opened all of Phase 1b, Tier 1
- We are committed to equitable vaccine distribution across Alameda County and this strategy serves both
  - people who are at high risk for severe illness or death
  - people who are at high risk for transmission because of where they live or work
- Moving sequentially rather than concurrently through the phases would mean we couldn't reach essential workers and high-risk settings for many months
- Public health data support this approach
  - Older adults account for the majority of COVID-related deaths
  - The food and agriculture sector has had high transmission rates and includes many frontline workers from communities disproportionately affected by COVID-19
  - Grocery stores have recently been identified as a source of transmission for older adults
  - People who are incarcerated are at high risk for transmission and often come from communities bearing a disproportionate burden of COVID-19

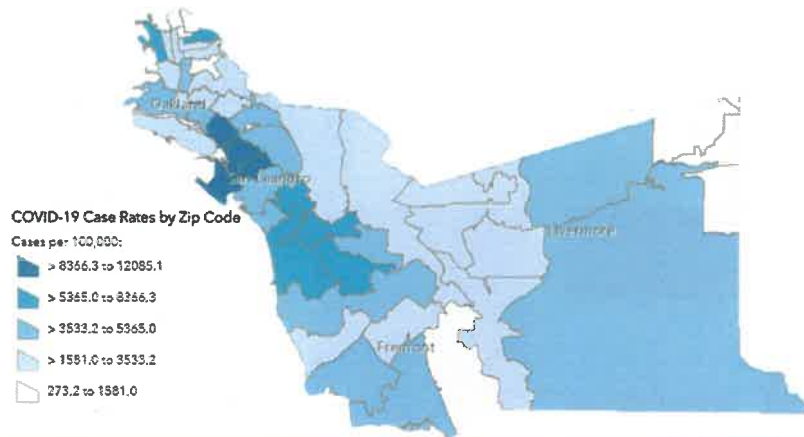


# Communities with disproportionate COVID-19 impacts



## Healthy Places Index (HPI)

- Composite measure of the impact of socioeconomic factors on the health of an area (e.g. housing, income, education, built environment, transportation, access to care)
- Quartile 1 = less healthy conditions
- Quartile 4 = more healthy conditions



## Zip codes with highest case rates

- Ashland/Cherryland - 94578, 94541, 94580
- East Oakland - 94621, 94603
- San Antonio/Fruitvale - 94606, 94601
- So. Hayward - 94544
- West Oakland - 94607.



