



# COVID-19 (Novel Coronavirus) Update

**Health Committee**  
**May 11, 2020**

**Colleen Chawla, Director**  
Health Care Services Agency

**Erica Pan, MD, MPH, FAAP**  
Interim County Health Officer



### Bay Area

**9,819**  
cases

87 on May 10

**347**  
deaths

2 on May 10

### California

**67,868**  
cases

1,067 on May 10

**2,717**  
deaths

27 on May 10

### United States

**1,329,072**  
cases

25,621 on May 9

**79,522**  
deaths

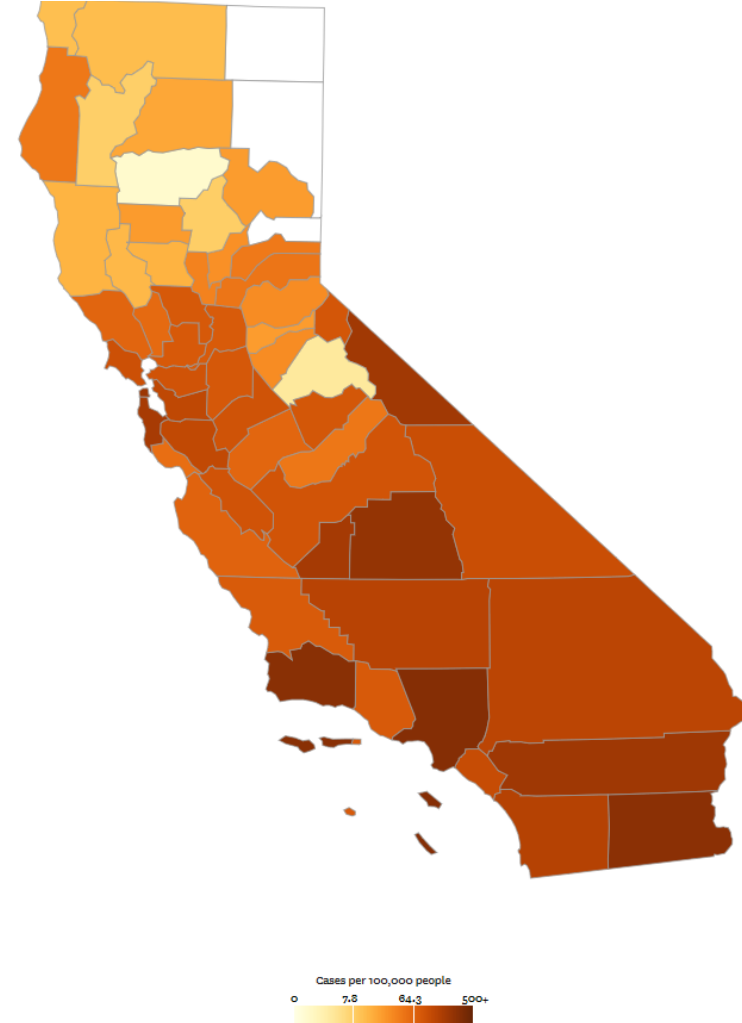
1,615 on May 9

# Coronavirus Tracker

The Chronicle is mapping every reported coronavirus case in the Bay Area, California and the U.S. We are tallying the number of tests reported, new confirmed cases, hospitalizations and deaths reported across the state by day.

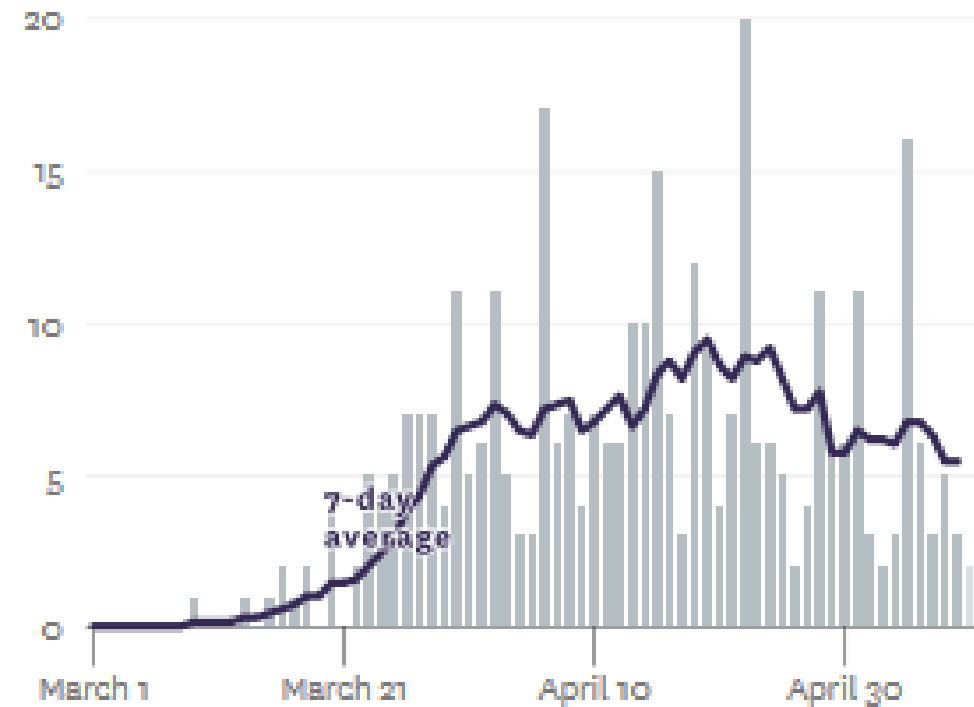
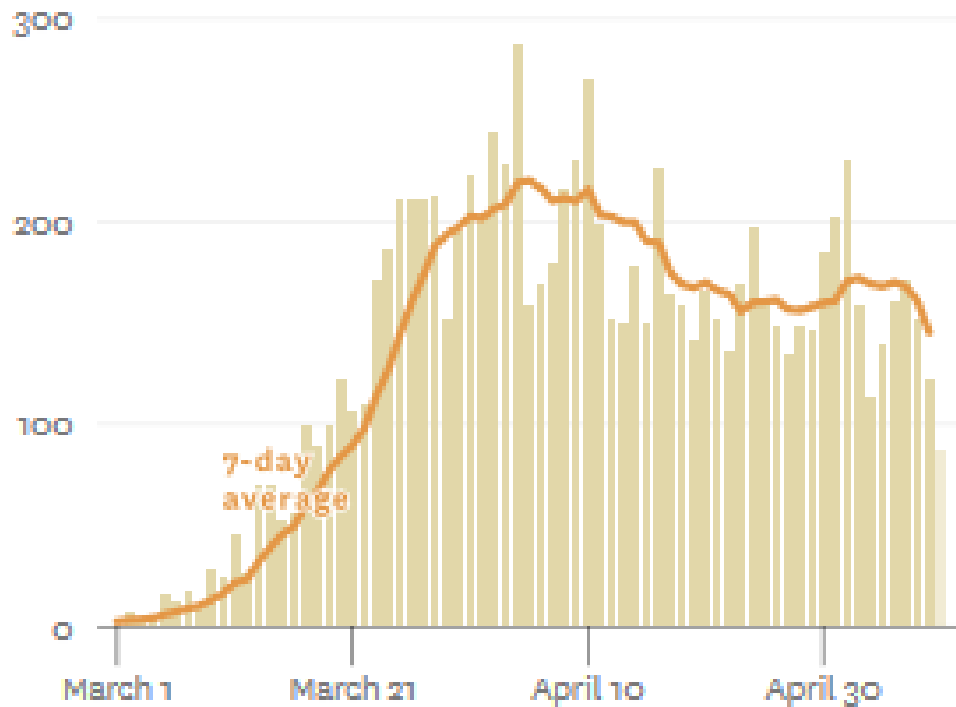
By [CHRONICLE DIGITAL TEAM](#) | LAST UPDATED: May 10, 2020 5:01 p.m.

California cases are organized by reporting county. Cases are based on reports from the U.S. Centers for Disease Control and Prevention, the California Department of Public Health and county public health departments, plus exclusive Chronicle reporting. For more information on the data, please [read about our methodology](#).




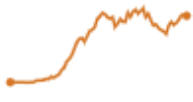




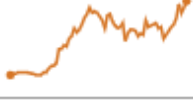
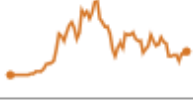

As of 5/10/20

## New reported cases and deaths in the Bay Area, by day



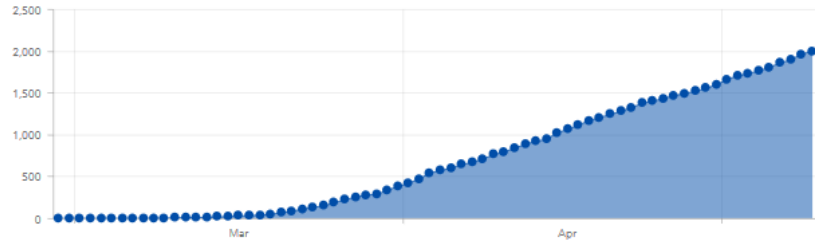
# COVID-19 in Alameda County and Greater Bay Area

- Alameda County (as of 5/10/20)
  - 2,064 cases in Alameda County health jurisdiction; 70 deaths
  - 66 cases in Berkeley health jurisdiction; 1 death

| County        | Total deaths | Total cases | New cases curve   | Weekly change in new cases |
|---------------|--------------|-------------|---|----------------------------|
| Santa Clara   | 129          | 2,339       |    | ▼ 61<br>-37%               |
| Alameda       | 71           | 2,064       |    | ▲ 45<br>+17%               |
| San Francisco | 34           | 1,943       |    | ▼ 81<br>-27%               |
| San Mateo     | 56           | 1,425       |    | ▼ 41<br>-20%               |
| Contra Costa  | 31           | 1,048       |    | ▼ 5<br>-5%                 |
| Solano        | 7            | 351         |    | ▼ 58<br>-72%               |
| Sonoma        | 3            | 309         |   | ▲ 23<br>+68%               |
| Marin         | 14           | 261         |  | ▲ 4<br>+25%                |
| Napa          | 2            | 79          |  | ▼ 1<br>-10%                |

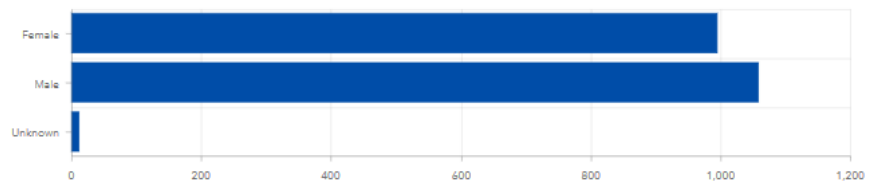
Alameda County LHJ

Alameda County LHJ Cumulative Cases



Cumulative Daily

Alameda County Cases by Sex



FTM and MTF are each less than ten and so are suppressed.

Cases Case Rates

[Click here to go to our mobile dashboard.](#)

[Click here to go to our second dashboard with data on deaths by race/ethnicity, hospitalizations, and cases and case rates by zip code.](#)

Alameda County Cases by City/Jurisdiction

|  |
|--|
| Alameda County: 2064   |
| Berkeley LHJ: 66   |
| Alameda County LHJ: 1998   |
| Under Investigation: 3   |
| Known Homeless: 26   |
| No Address (May Be Homeless): 7                                      |
| Santa Rita Jail*: 39   |
| Alameda: 39  |
| Albany: <10  |
| Dublin: 26   |
| Emeryville: <10  |
| Fremont: 117   |
| Hayward: 434   |
| Livermore: 42  |
| Newark: 63   |
| Oakland: 656   |
| Piedmont: 10   |
| Pleasanton: 54   |
| San Leandro: 110   |
| Union City: 83   |
| Eden Area MAC (Ashland, Cherryland, Hayward Acres, San Lorenzo): 164 |
| Castro Valley MAC: 101   |
| Fairview MAC: <10  |
| Sunol: 0   |

We are coordinating with Health Care for the Homeless and so the number homeless will change substantially.

Cases Case Rates

1,998 Cases  
70 Deaths

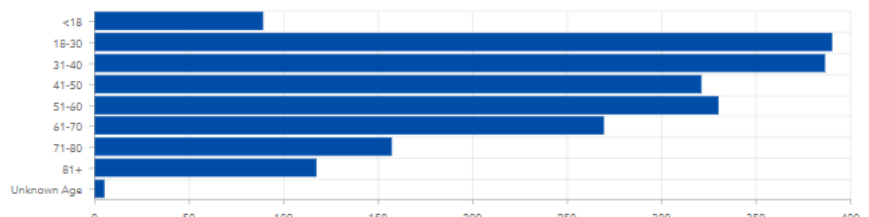
Berkeley LHJ

Berkeley LHJ Cumulative Cases



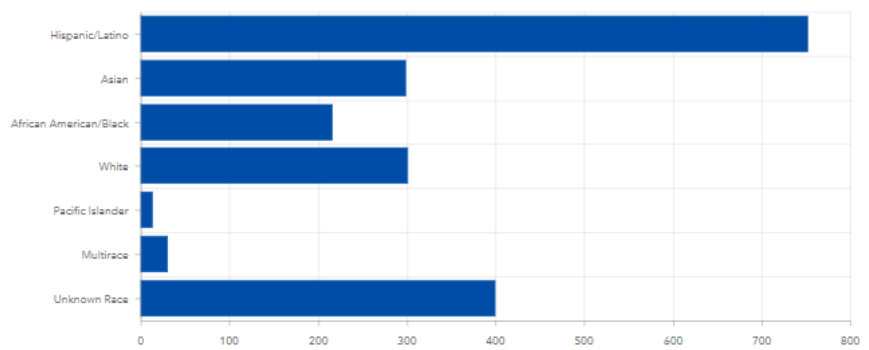
Cumulative Daily

Alameda County Cases by Age Group



Cases Case Rates

Alameda County Cases by Race/Ethnicity



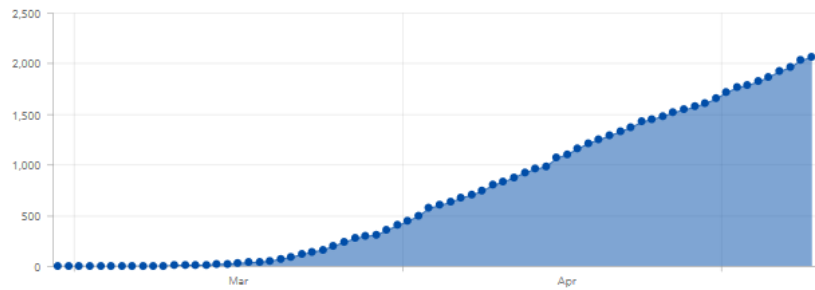
Native American has less than ten cases and is suppressed

Cases Case Rates

66 Cases  
1 Deaths

Alameda County Total

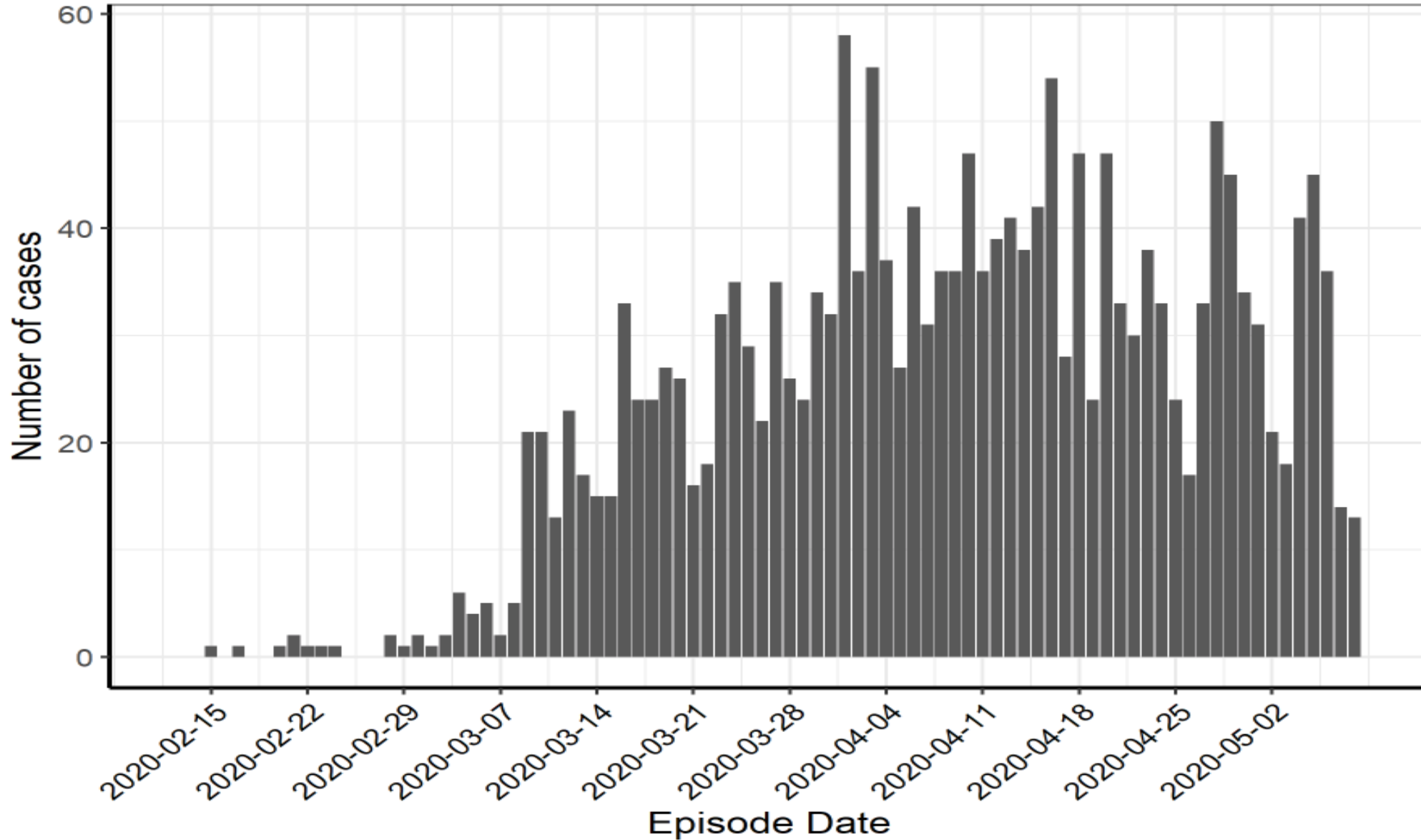
Alameda County Total Cumulative Cases



Cumulative Daily

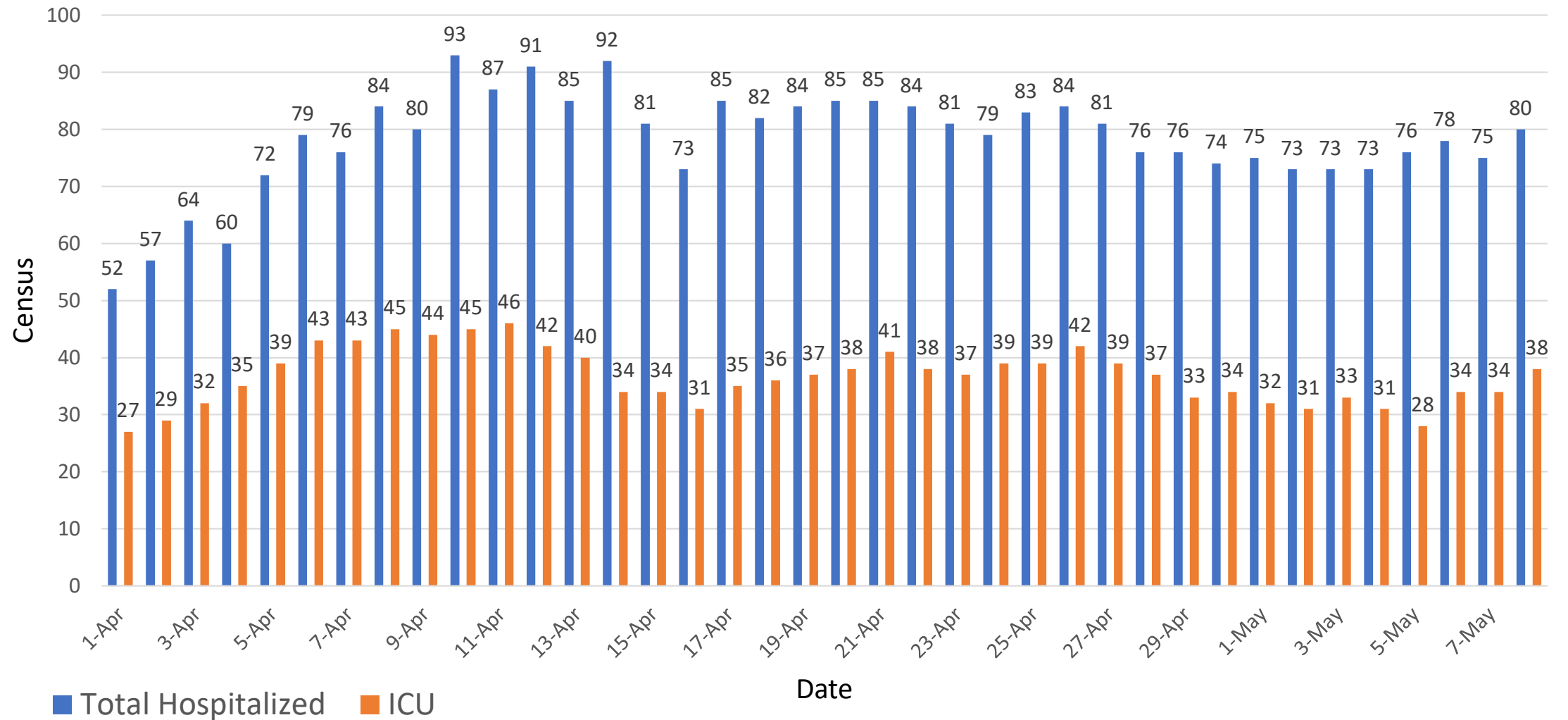
2,064 Cases  
71 Deaths

# Epi curve of COVID-19 cases in Alameda County



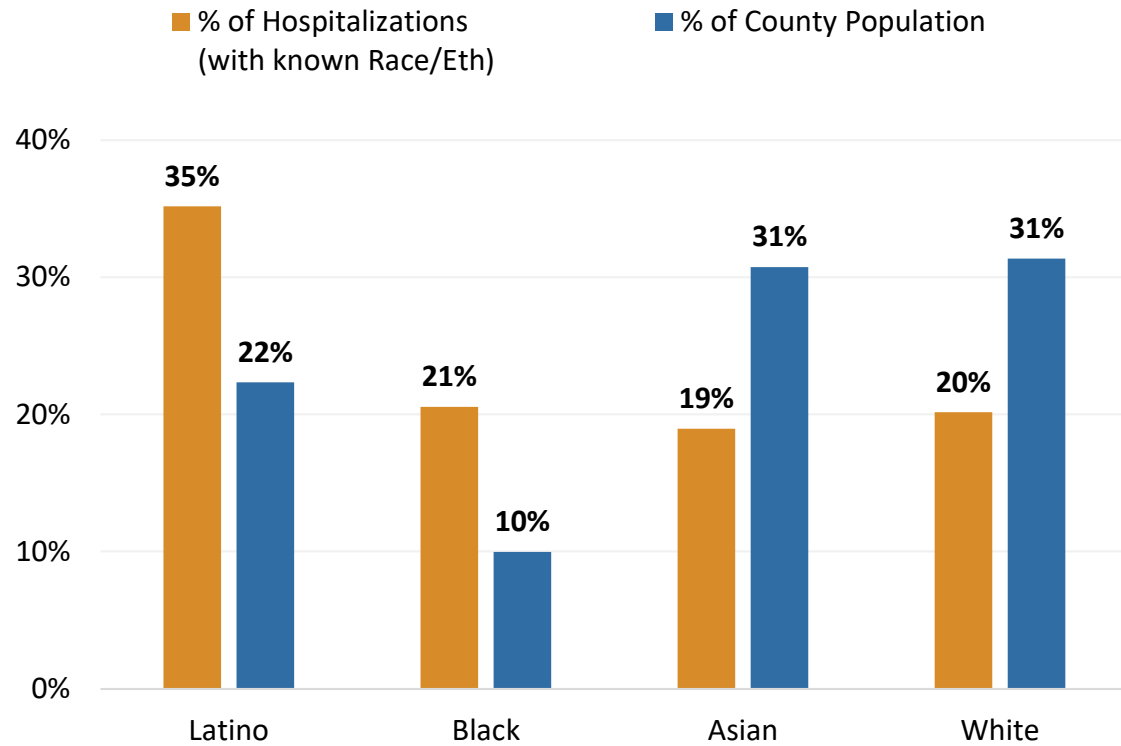
Source: CalREDIE Data Distribution Portal download May 9, 2020 9:45 am; includes CalREDIE entries through May 8, 2020.

# COVID-19 positive patients hospitalized in Alameda County, 2020

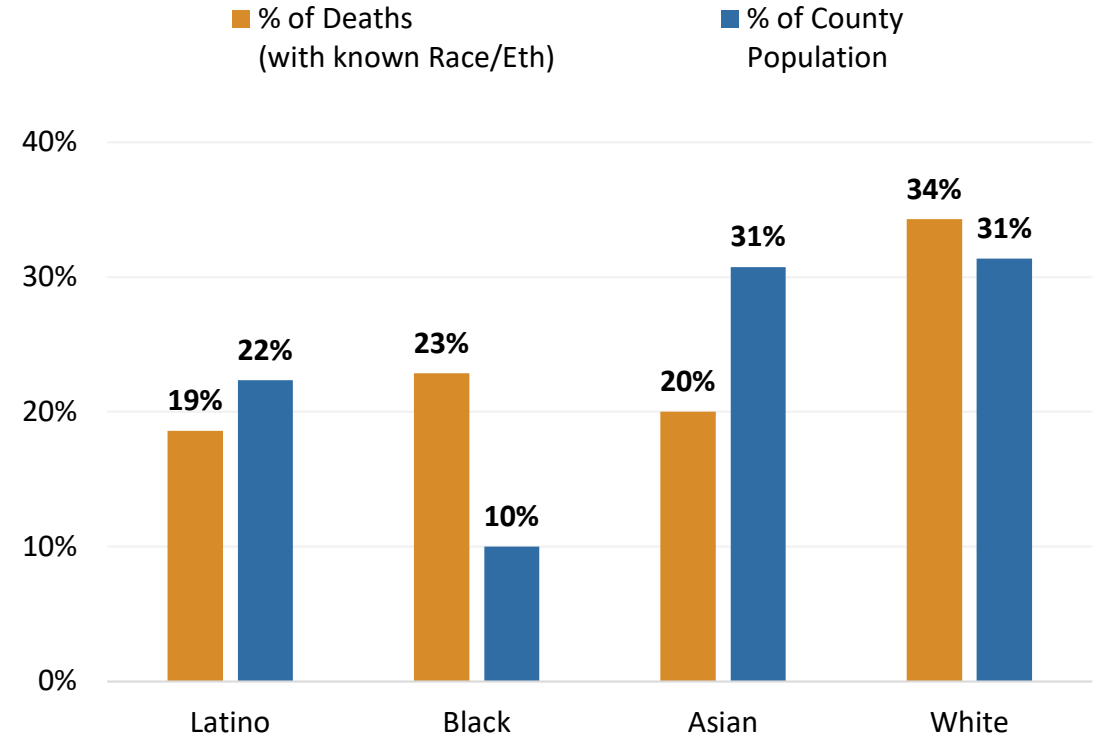


Source: [https://data.chhs.ca.gov/dataset/california-covid-19-hospital-data-and-case-statistics/resource/6cd8d424-dfaa-4bdd-9410-a3d656e1176e?inner\\_span=True](https://data.chhs.ca.gov/dataset/california-covid-19-hospital-data-and-case-statistics/resource/6cd8d424-dfaa-4bdd-9410-a3d656e1176e?inner_span=True)

### Proportion of COVID-19 Hospitalizations by Race/Ethnicity Compared to Proportion of County Population



### Proportion of COVID-19 Deaths by Race/Ethnicity Compared to Proportion of County Population



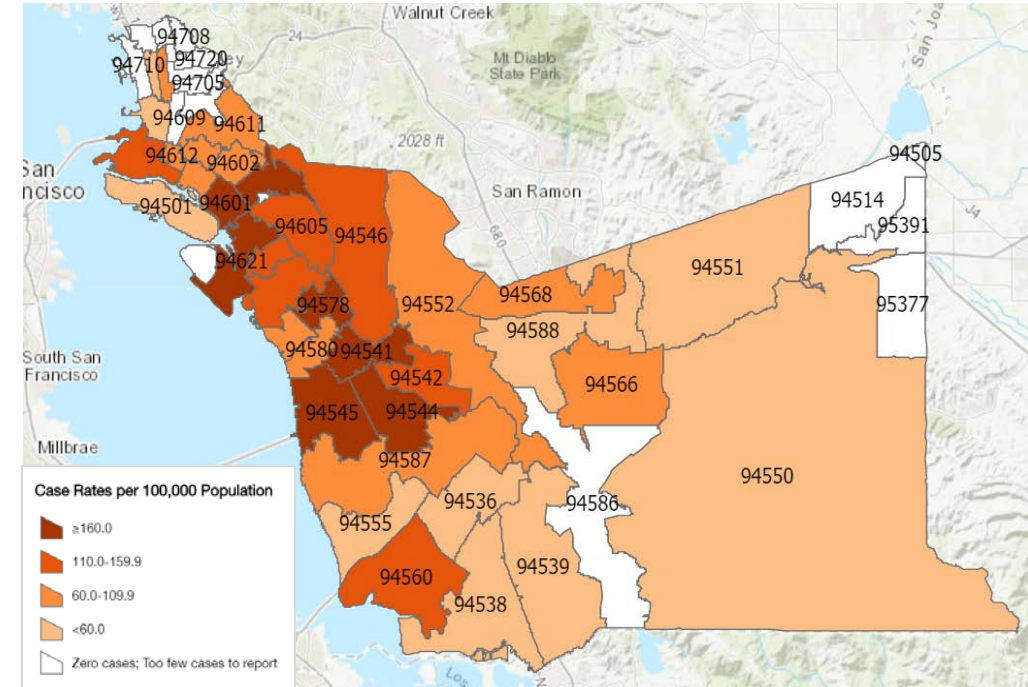
Note: Includes hospitalizations with known race (92%); Data as of 5/8/20

Note: Includes deaths with known race (100%); Data as of 5/8/20

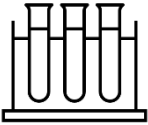


# HCSA Health Equity Task Force

- **Focus on communities with high COVID-19 disease burden**
  - African American, Latinx, Pacific Islander
  - West Oakland, East Oakland, Ashland/Cherryland and parts of South Hayward
- **Actionable initiatives supporting HCSA DOC disease response strategy**
  - Increased testing access for communities of color
  - Cultural sensitivity in case and contact investigations
  - Tailored and language responsive messaging
  - Improved race/ethnicity data quality and integrity
  - Health, social and economic supports to help people isolate and quarantine



# Institutional & Community Priorities for Action to Promote Racial Equity in COVID-19 Response and Recovery



**Expanded & Targeted Testing**



**Emergency Economic Assistance & Social Benefits**



**Isolation/Quarantine Supports & Protective Measures for High-Risk**



**Targeted Resources, Messaging, & Supports for Marginalized/ Impacted**



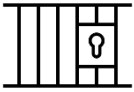
**Data Surveillance**



**Moratorium on Evictions, Foreclosures, & Utility Shutoffs**



**Protective Measures for People Experiencing Homelessness**



**Protective Measures for People who are Incarcerated**



**Healthcare, Emergency Assistance, & Sanctuary for Immigrants**



# Testing Updates

- Long term goals
  - All symptomatic persons
  - Community surveillance – sustainable
  - 3,100 tests/day
- Testing Task Force
- Testing survey conducted



- Public Health testing priorities:
  - Staff/residents of residential care facilities
  - Symptomatic health care personnel/medical first responders/essential infrastructure workers
  - Other congregate living settings
  - Outbreak investigations
  - Homeless
  - High-risk contacts
  - Hospitalized & critically ill
  - Deaths
  - Others at higher risk
- Public Health lab testing capacity
  - Up to 200/day, 7d/week
  - Surge can be sent to UCSF CZ Biohub, in discussion with other labs

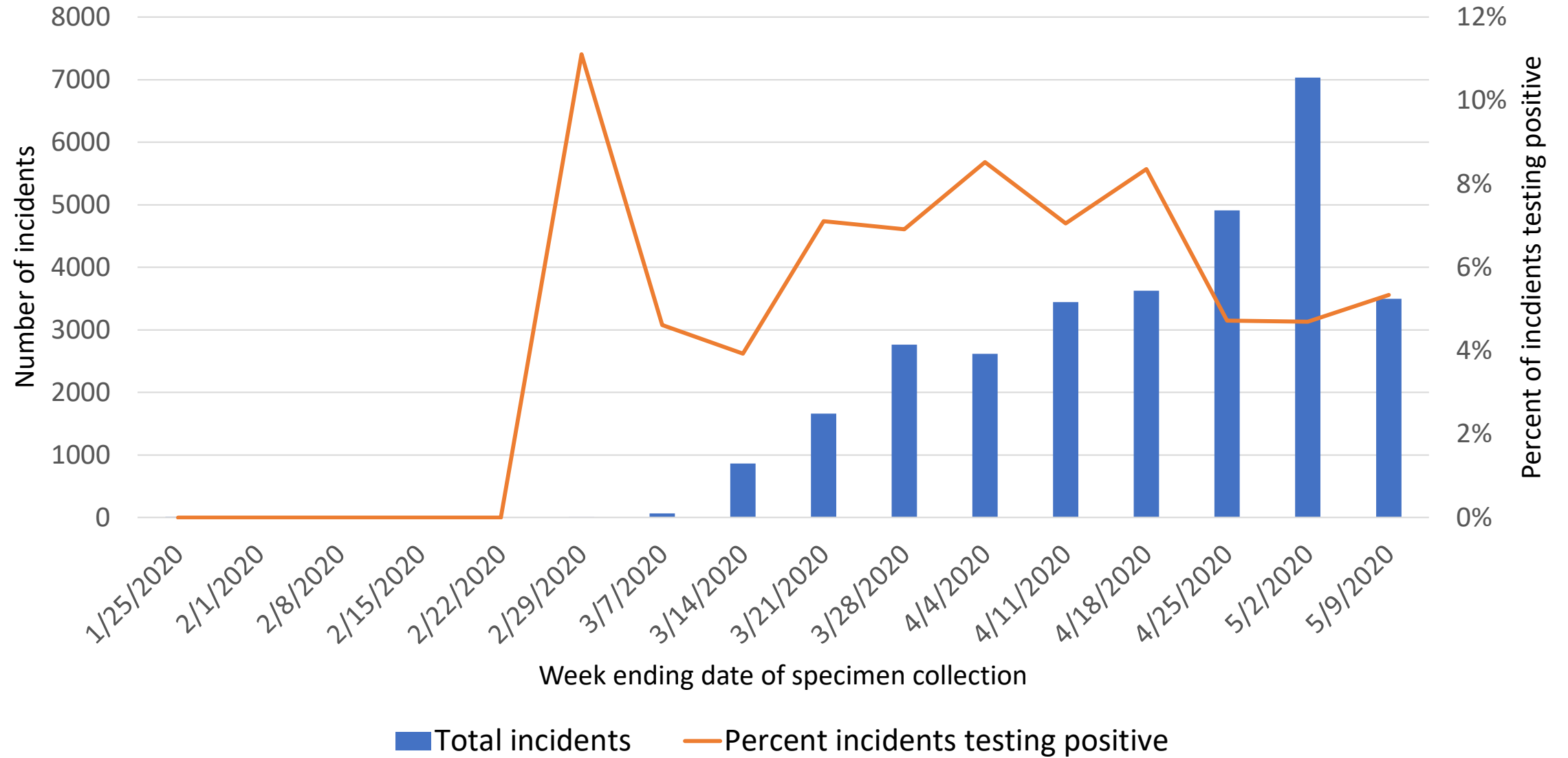


# New Testing Sites & Partnerships

- Testing sites for underserved areas
  - In partnership with City of Oakland, CORE and Verily Life Sciences
    - **Allen Temple Baptist Church** (launching this week)
    - **Roots Community Health Center** (launched May 6)
  - In partnership with State and OptumServe
    - **REACH Youth Center** (launching this week)
    - **Alameda County offices in Hayward** at 224 W Winton Ave (launching this week)

The screenshot shows the Alameda County Public Health Department website. The header includes the department name and navigation links like 'Start Here', 'Health Alerts', and 'Font Size'. A main navigation bar contains links for Home, Health Alerts, Programs & Services, Communicable Disease, Clinics, Data & Reports, About ACPHD, and Contact ACPHD. The page title is 'Division of Communicable Disease Control & Prevention COVID-19'. A search bar is present. The main content area is titled 'Testing for COVID-19' and lists 'Alameda County COVID-19 Testing Resources' with links for COVID-19 Testing Location, County of Alameda COVID-19 Food Distribution & Services Map, and Interactive COVID-19 Testing Map for California. A 'Necessity of COVID-19 Testing' section provides guidance on when to seek medical attention. A 'Clinician Testing Information & Guidance' button is also visible. The footer contains contact information for the Alameda County Public Health Department, including the address (1000 Broadway, Suite 500, Oakland, CA 94607) and phone number (510) 267-8000. It also includes links for 'About ACPHD', 'Data & Reports', and 'Contact Us', along with a copyright notice for 2013 and links for 'Terms of Use' and 'Privacy'.

# Alameda County COVID-19 Testing



Sources: 1) CalREDIE Data Distribution Portal download May 9, 2020 1:30pm; includes CalREDIE entries through May 8,2020. 2) Avellino non-positive results received through May 8, 2020 2:30 am from Avellino spreadsheets.

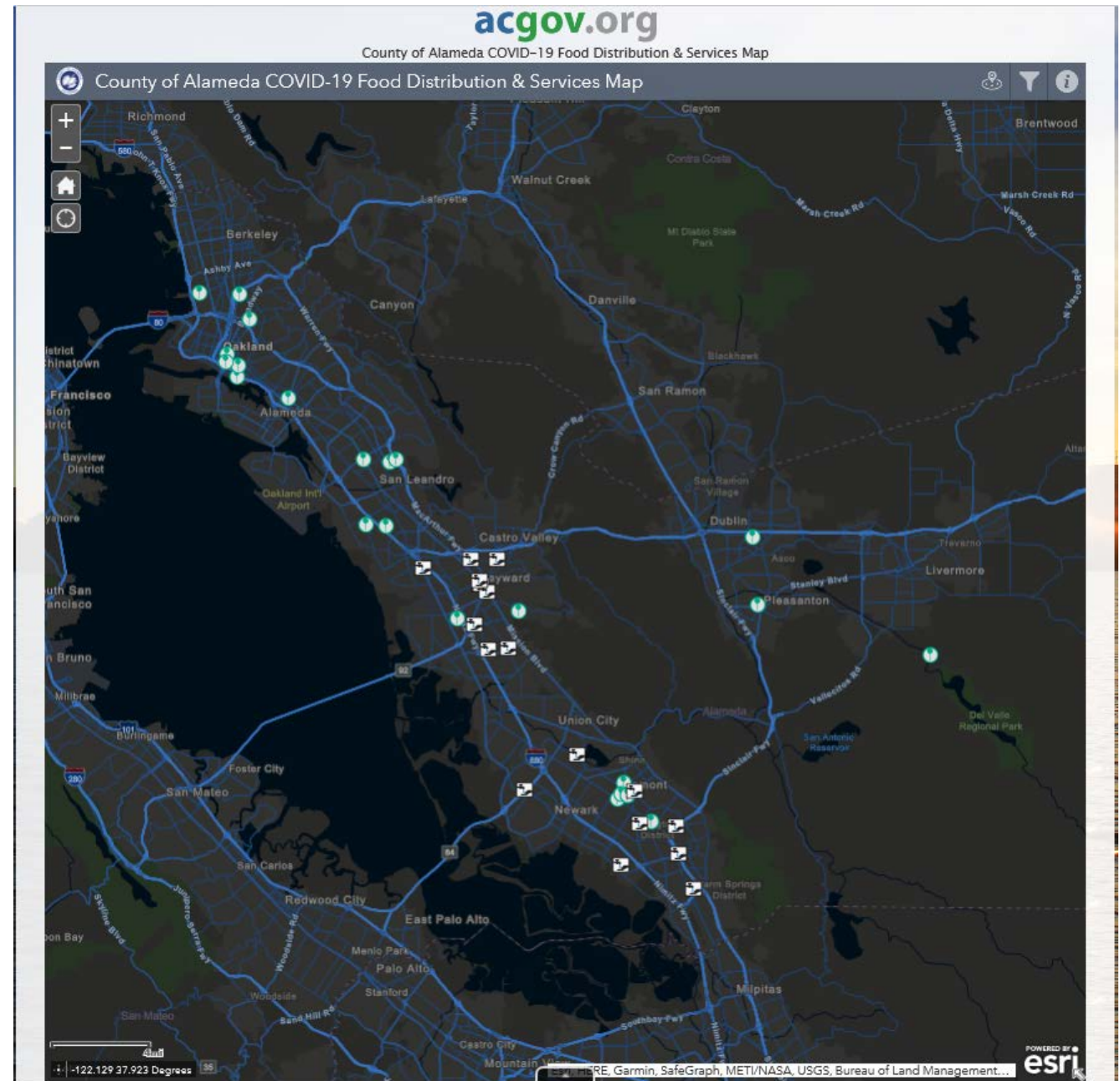
# The ACGOV Interactive Service Location Map

Information about testing sites and hygiene stations was recently added

The map is at

<https://www.acgov.org/maps/food-services.htm>

It also provides information about  
Provides information about food  
services, shelter and transportation  
to food pickup



# Antibody Testing/Serology & Other Emerging Data

- Rapid disposable tests/point of care are not currently reliable
- Use and reliability depends on prevalence of disease in population tested
  - With low prevalence (<5%), positive predictive value is only 50-60%
- Further data needed to inform future use, reliability and significance

## TRACK COVID Study

- Regional surveillance project with UCSF, Stanford and ZSFGH funded by CZ Biohub thru 2020
- Systematic sampling weighted by zip code case rates
- PCR & Antibody testing serially over time
- Subset of health care workers

## CZ Biohub Genomic Sequencing

## California Emerging Infections Program

- Enhanced surveillance of HCWs with COVID19
  - Clinical work & PPE Use
- Enhanced surveillance & data collection on all hospitalized cases



# Key State Actions

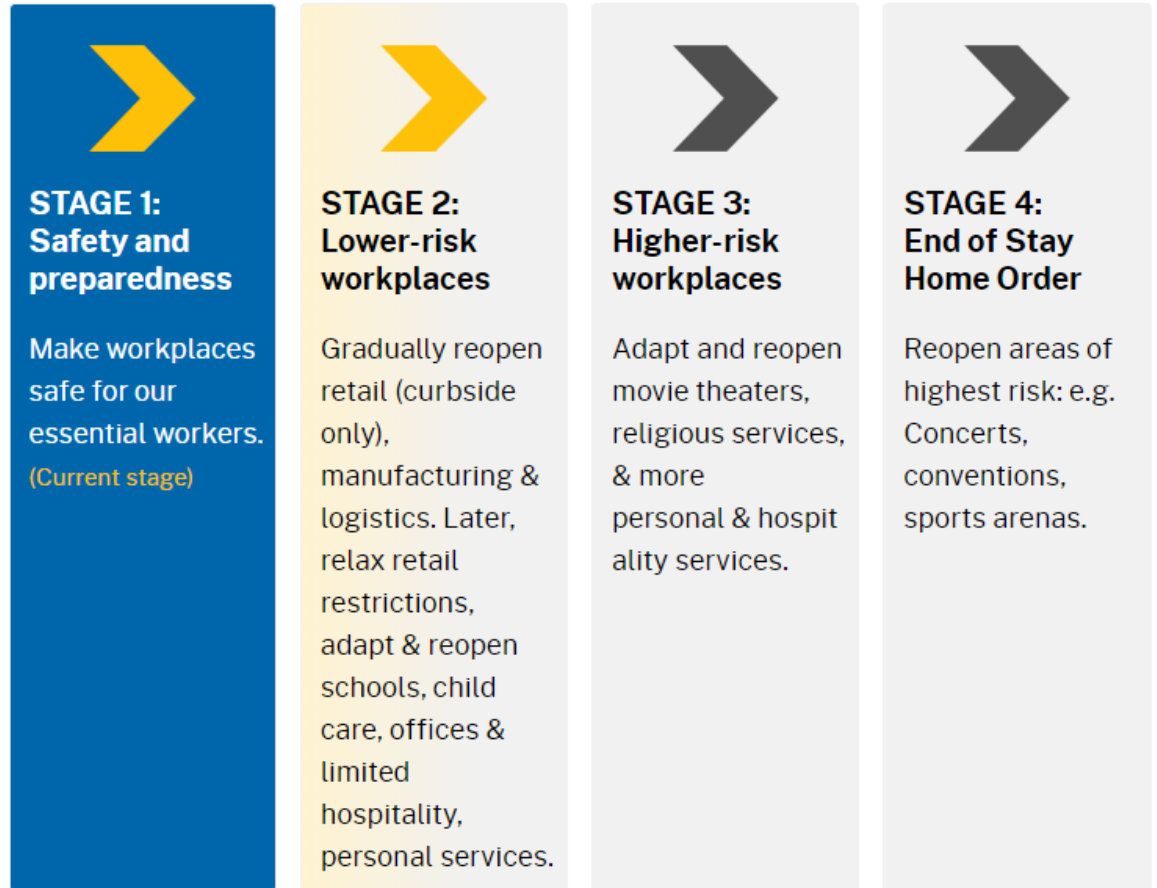
- 5/8/20: **Governor issues Exec Order to facilitate mail-in voting** for all registered voters for November election
- 5/8/20: **CA Health Officer allows limited re-opening curbside retail and associated manufacturing**
  - Counties may maintain stricter measures & Alameda County & Bay Area have not yet re-opened curbside retail
- 5/6/20: **Governor issues Exec Orders to**
  - **extend Workers' Compensation benefits** to all essential employees diagnosed with COVID-19 since March 19<sup>th</sup>
  - **extend deadlines and waive penalties for individual and small business property taxes**
- 5/5/20: **CA announces Contact Tracing training partnership with UCSF/UCLA;** technology platforms, training, and trained state employees to be available to local health jurisdictions





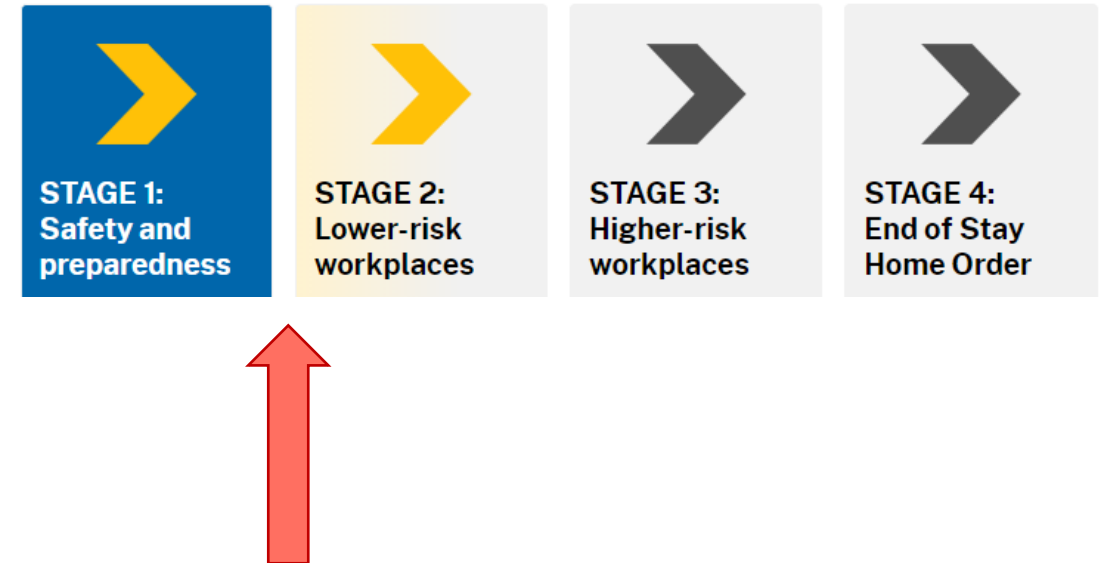
# CA allowed to move to Stage 2 of Resilience Roadmap on May 8

- **Counties may delay or accelerate adoption** of relaxation efforts based on local data and conditions
  - Counties moving faster must attest to disease containment metrics
- **Alameda County NOT yet in Stage 2**
- **Early Stage 2** : curbside & delivery: bookstores, jewelry stores, toy stores, clothing stores, shoe stores, home and furnishing stores, sporting goods stores, antique stores, music stores, florists
- **Later Stage 2**: restrictions relaxed for destination retail, schools, child care, offices, dine-in restaurants, outdoor museums
- State issued guidance for businesses



# Alameda County: Getting to Stage 2

- **Modified Bay Area SIP order effective 5/4/20, allows:**
  - All Construction projects
  - Low-risk outdoor businesses
  - Increased outdoor activities
  - Childcare and camps for children of people permitted to work outside their homes
- **Anticipate  $\geq$  2 weeks to see shift in indicators**
- **COVID Recovery Planning**
  - All businesses/organizations encouraged to plan for physical distancing, safety, and cleaning protocols for safe reopening
  - Aligning with State's guidance for businesses, with local modifications as needed
  - [COVIDrecovery@acgov.org](mailto:COVIDrecovery@acgov.org): technical assistance for business regarding COVID-19 plans



# Alameda County Progress

| Indicator Status   | Cases & Hospitalizations Flat or Decreasing  | Sufficient Hospital and Surge Capacity   | Sufficient Testing Capacity   | Sufficient Disease Containment   | Sufficient PPE   |
|--------------------|--|--|---|--|--|
| Related Activities | <ul style="list-style-type: none"> <li>• Shelter in Place</li> <li>• Clinical guidance</li> <li>• Public guidance</li> </ul> | <ul style="list-style-type: none"> <li>• Health care systems planning</li> <li>• ~6% of hospital beds COVID+/suspected</li> <li>• ~15% ICU beds</li> </ul> | <ul style="list-style-type: none"> <li>• Countywide testing network @ 31 sites</li> <li>• Goal 3100 tests/day</li> <li>• As of 5/4 &gt;one-fourth of the way</li> </ul> | <ul style="list-style-type: none"> <li>• Contact tracing expansion</li> <li>• Isolation &amp; Quarantine support</li> <li>• Encampment response</li> <li>• Surveillance</li> <li>• LTCF Task Force</li> <li>• Equity lens</li> </ul> | <ul style="list-style-type: none"> <li>• Procurement and fulfillment through EOC</li> <li>• Still significant PPE requests from healthcare partners</li> </ul> |



# Homelessness: Outreach and Shelter

- Street Health and Outreach Updates
  - Positive cases in multiple encampment sites but limited numbers
  - Health Care for the Homeless and Public Health conducted case investigation
  - Referred multiple people to Operation Comfort
  - Worked with Oakland and Livermore staff and providers to bring additional hygiene supplies and meals to the sites, encourage distancing
  - Continuing weekly call with providers
- Shelter Updates
  - Positive cases in three shelters to date, no major outbreaks
  - Most have reduced number of guests
  - Health Care for the Homeless distributing masks and thermometers
  - Site visits and weekly calls continue to provide technical assistance
  - Winter shelters closing 6/30



# Homelessness: Project Roomkey

| Hotels Leased          | City    | Max Occupancy | Current Occupancy | %          | Occupancy Notes   | Target Population                           | Lease  | Shelter Contract |
|------------------------|---------|---------------|-------------------|------------|---|---|--------|------------------|
| Comfort Inn            | Oakland | 100           | 57                | 57%        | Quarantine stay ~ 2 weeks   | Homeless/ Covid +                           | State  | Abode Services   |
| Radisson               | Oakland | 274           | 246               | 90%        | Moving people back post-water damage. 11 rooms offline longer term. | Homeless/high risk                          | State  | Abode Services   |
| Quality Inn            | Oakland | 98            | 32                | 33%        | Reducing occupancy to move to COVID+ target population              | Current homeless/ high risk; Future Covid + | County | Abode Services   |
| Marina Village Inn     | Alameda | 50            | 4                 | 8%         | Scaling up May 8-22   | Homeless/high risk women & families         | County | Building Futures |
| <b>Total Operating</b> |         | <b>522</b>    | <b>339</b>        | <b>65%</b> |   |   |        |                  |



# Homelessness: Social Health Information Exchange (SHIE) and Community Health Record (CHR)

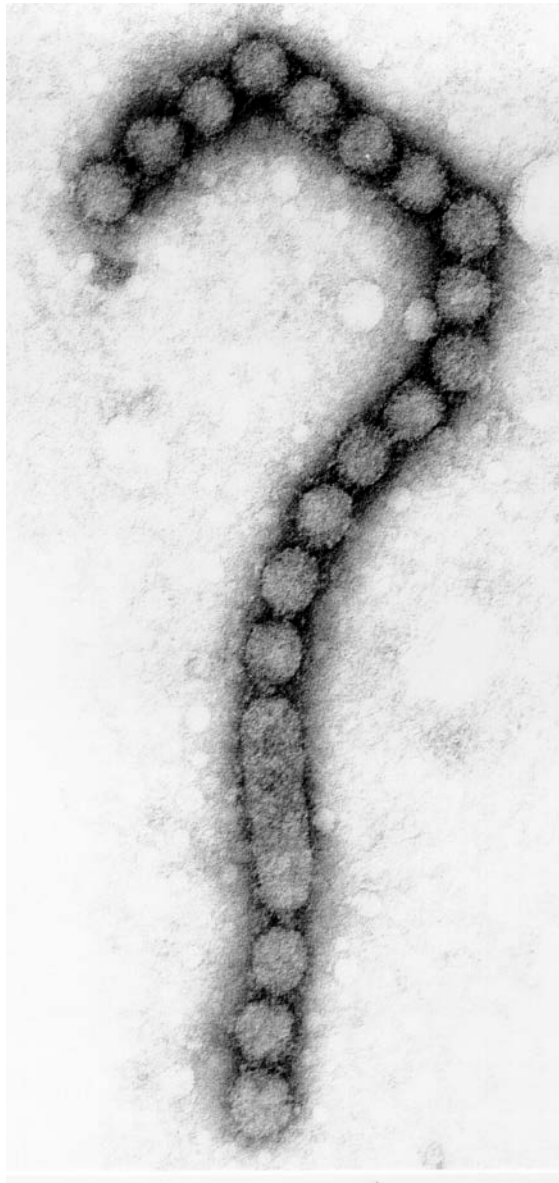
- Emergency permission gained to expand records viewable in the CHR
- 614,000 consumer records are now viewable in the CHR, if needed for COVID related care coordination
  - Allows secure, legally vetted sharing
  - For hotel residents: housing navigation, Mental health and SUD referrals will be coordinated via the SHIE
  - Doctors screening potential guests for the hotels will have access to the CHR to improve their assessment of guests coming to the hotels
- Adding PHNs and some contact tracing staff as users



# AHS/County Liaison on COVID-19

- County Liaison Team has made 7 hospital visits so far.
  - All 4 acute campuses
  - Multiple shifts and week day/week ends
  - Total 85 individuals interviewed so far in 22 units/floors
  - Observed conditions/availability of PPE
- Generally hearing from staff that:
  - PPE availability now is adequate, though access is controlled in some units
  - Staff noted “scary start” 3-5 weeks ago with rationing/reuse pro and some things running out and inadequate training
  - Concerns expressed about the tone of communications between Administration and staff
- Site visits ongoing through end of May





# CORONAVIRUS UPDATES

Get the latest news from our Public Health Department

## INTERACTIVE MAP

### COVID-19 Food Distribution & Services MAP

The Alameda County Emergency Operations Center (EOC) Care & Shelter Branch in close coordination with Alameda County Community Food Bank, 211, and cities developed a countywide interactive map that includes food distribution sites and other essential services which are currently open under the COVID-19 Shelter-In-Place Order. The map will be updated regularly and remain active for the duration of the Shelter-In-Place Order.

[Open Interactive Map](#)

## DONATIONS

### Help Us Fight COVID-19

Our Board of Supervisors has reactivated the Disaster Relief Fund. Due to the enormous and varied needs facing the community and the health care systems at this time, the county has established two separate funds. The Emergency Fund will provide needed services to those directly affected by the pandemic. The Recovery Fund will be used to purchase personal protective equipment and other supplies to assist those fighting the pandemic. You can also donate personal protective equipment.

[Learn More / Donate](#)



**Thank you  
to our...**  
**health care workers,  
first responders,**



## PUBLIC SAFETY

### Face Coverings Now Required

Our Health Officer Dr. Erica Pan has issued an Order for all members of the public to wear face coverings when around people outside of their household. Face coverings can be simple and homemade, made of cloth, fabric, or other soft or permeable material without holes, that covers the

**ACPHD COVID-19 webpage: [acphd.org/2019-ncov](https://acphd.org/2019-ncov)**

Email questions to: [nCov@acgov.org](mailto:nCov@acgov.org)

