

Overdose Prevention and Opioid Litigation Update

Health Committee 5.9.2022



Agenda

- Opioid overdoses in Alameda County
 - Report from HEPPAC – one of our boots-on-the-ground partners
- Overdose Prevention and Treatment
 - Naloxone Distribution
 - Data Improvement Group – led by Public Health
 - The Bridge Project – led by AHS
 - In Your Corner – led by Probation

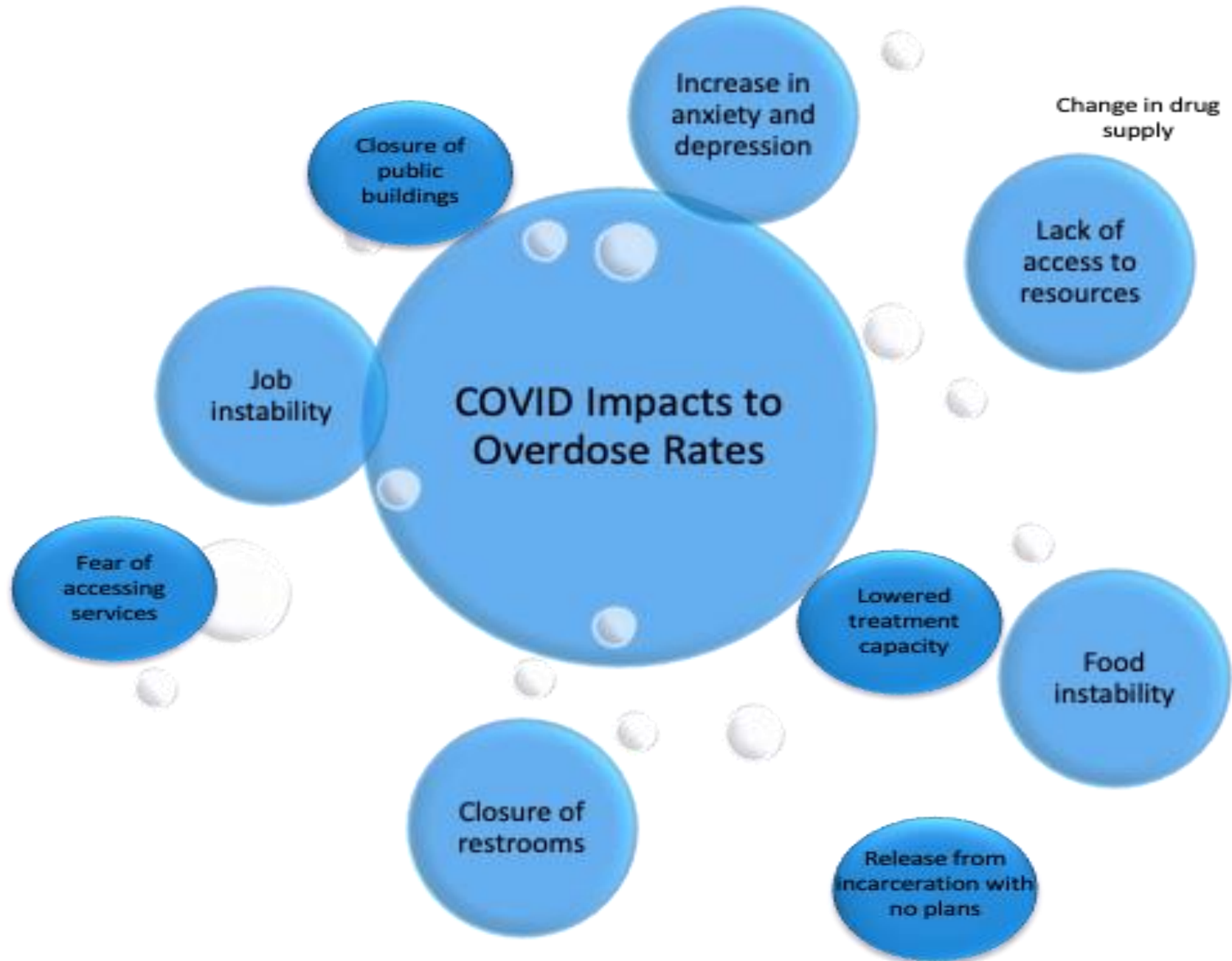


HEPPAC

The HIV Education and Prevention Project of Alameda County

Braunz Courtney
Executive Director





HEPPAC

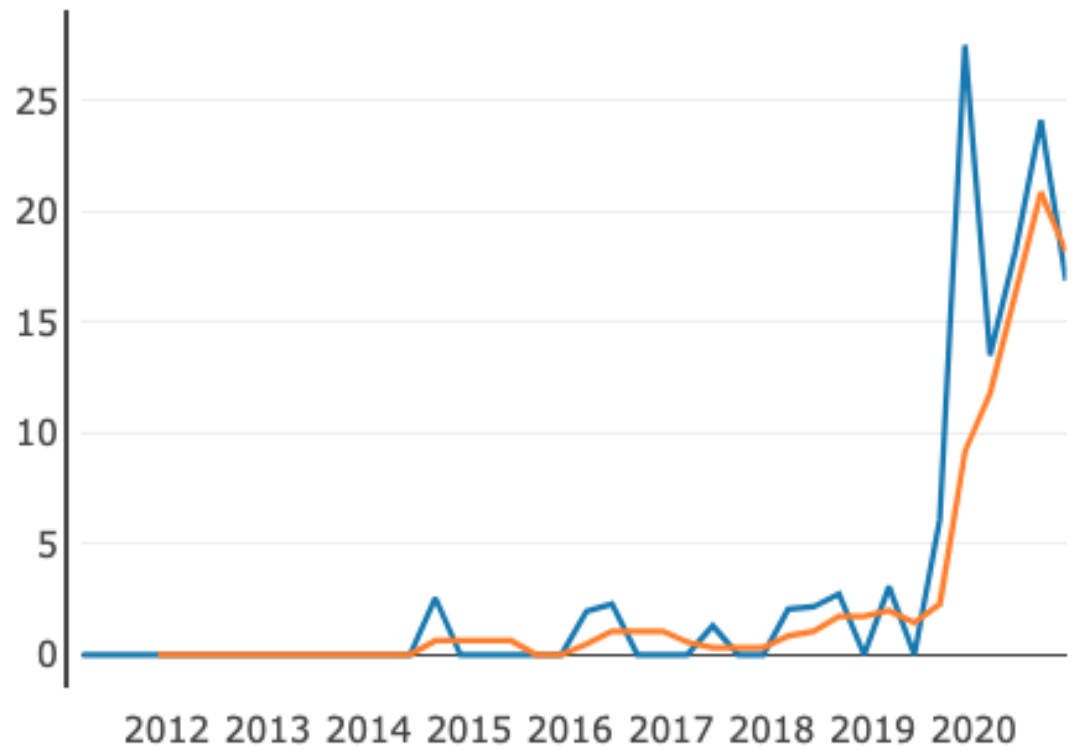


Alameda County
Health Care Services Agency

Fentanyl-Related Overdose Deaths - Black/African American

Age-Adjusted Rate per 100,000 Residents

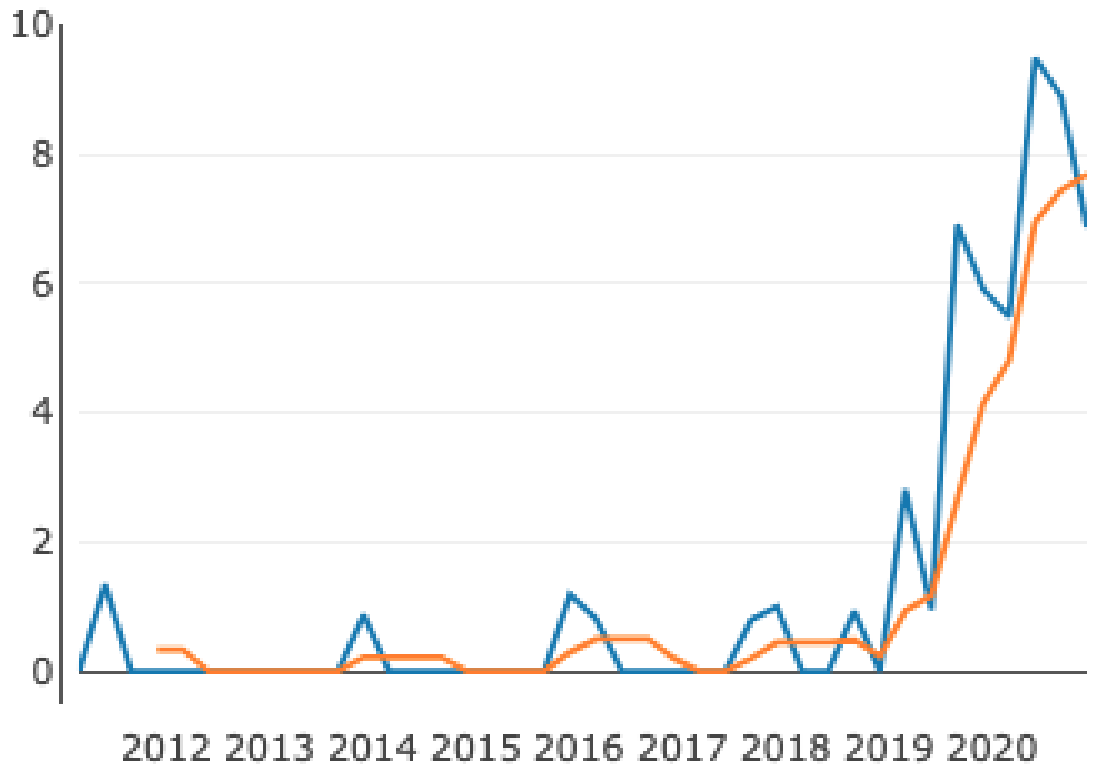
Alameda County



— Annualized Quarterly Rate
— 12-Month Moving Average

Fentanyl-Related Overdose Deaths - Hispanic/Latino Age-Adjusted Rate per 100,000 Residents

Alameda County



— Annualized Quarterly Rate
— 12-Month Moving Average



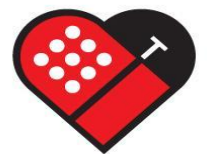
HEPPAC



Alameda County
Health Care Services Agency

HEPPAC's Impact

| | FY 20-21 | FY 21-22 (7/1-10/31) | % Variance |
|---------------------------------------|----------|----------------------|------------|
| Grand Total Narcan Distributed | | | |
| Nasal | 7348 | 6869 | 93.5% |
| Injectable | 3492 | 1899 | 54% |
| Reversals Reported | | | |
| | 467 | 109 | 23% |
| Trainings | | | |
| Organizations Trained | 30 | 17 | 57% |
| # of Trainees from ^ | 527 | 225 | 43% |
| One-on-One (Exchanges/Outreach) | 484 | 152 | 31% |



HEPPAC



Alameda County
Health Care Services Agency

Data Improvement

- Spearheaded by the CAPE unit at Public Health
- Partnership of multiple County agencies and departments
- Working to bring actionable data forward:
 - Sources include EMS data, hospital data, Coroner's data and treatment data
 - Including overdoses that are reversed and those that are fatal
 - Near real time
 - By census tract

Special population: People Experiencing Homelessness

- People experiencing homelessness are 30% of total AC Overdose deaths in 2020 (94/317)
- People with recent (3yr) experience of homelessness constitute 36% of OD deaths in 2020 (115/317).
- **190 OD deaths 2018-2020 in Alameda County** (based on X41, 42, 44 only)
 - 2018: 52 homeless OD deaths
 - 2019: 61 homeless OD deaths
 - 2020: 94 homeless OD deaths
- **Outdoors:** 73% (121) Overdoses took place outdoors (including encampments, vehicle, streets)
- **Indoors:** 27% (45) ODs occurred indoors (other's house, shelter, motel)
 - 25 ODs unknown location (ED/hospital)
- **Sex:** Male: 79%; Female: 21%
- **Race:** Black 40%; White 40%; Latinx 12%, Native Am 3%; Asian 4% other/unk 2%
- **Average Age:** 50 yrs.
- **City:** Oakland 121; Hayward 18; Berkeley 9%, San Leandro 8, Fremont 6, Tri-Valley: 8, Other: 13

Opioid Overdose Statistics: 911 Calls

Total # of opioid ODs each year:

- July – Dec 2019: 636
- Jan – Dec 2020: 1,513
- Jan – April 2021: 458

Demographics:

- Out of 2,607 overdoses, **33.75%** (880) were African American
- **35.75%** (932) were white
- **31.11%** (811) were other races/ethnicities

Oakland:

- 2019: **51.73%** (329)
- 2020: **47.32%** (716)
- 2021: **46.29%** (212)
- Total: **48.22%** (1,257)

Programs to Prevent Opioid Overdose

- Harm Reduction Contracts
- Reducing opioid prescribing
 - HCSA works with ACCMA and the MEDS Coalition to do education and medication takebacks.
- Support for Substance Use Disorder Treatment
- Partnerships with County Agencies and Community
 - Probation-sponsored partnership In Your Corner
- Support for MAT
 - Narcotic Treatment Programs via ACBH
 - Bridge Program at Highland and other EDs

Who is In Your Corner?

The In Your Corner Alameda County Young Adult Opioid Initiative aims to reduce stigma, a major barrier to accessing substance use services. We are focused on building welcoming communities where young people can get support from adults and peers who are ready to help.

This presentation was prepared under cooperative agreement 2018-YB-FX-K003 from the Office of Juvenile Justice and Delinquency Prevention (OJJDP), U.S. Department of Justice. The points of views expressed in this document are not necessarily representative of the official policies of OJJDP or the U.S. DOJ.

This work is supported by the Alameda County Probation Department.

Resources available

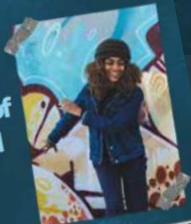
OPIOID & OTHER DRUG AWARENESS TOOLKIT

BROUGHT TO YOU BY:

In Your Corner - Alameda County Youth Crisis Initiative

IN YOUR
CORNER

You Are Worthy of
What You Need



IN YOUR
CORNER

Toolkit - assists providers on how to identify, have conversations with, and refer young adults to treatment

Resource pocket cards - includes resources for young adults to get support in meeting their immediate needs

Training resources - webinars and other resources

White Paper

Web page: www.inyourcorneralameda.org

*Spanish-language resources available soon

WHERE TO GO IF YOU NEED HELP NOW

- I'M THINKING OF HURTING MYSELF
Call Crisis Support Services of Alameda County (1-800-309-2131)
- I NEED HELP WITH FOOD AND SHELTER
Call 2-1-1 for help in Alameda County
- I NEED TO EXCHANGE NEEDLES, PREVENT OVERDOSE, OR GET A WOUND CHECKED OUT:
HEPPAC provides a safe space as well as harm reduction services
Drop-In Center (5323 Foothill Blvd., Oakland) | heppac.org/heppac-drop-in-center
Syringe Access (several locations) | heppac.org/syringe-access-program/
Call HEPPAC for general info (510-434-0307)

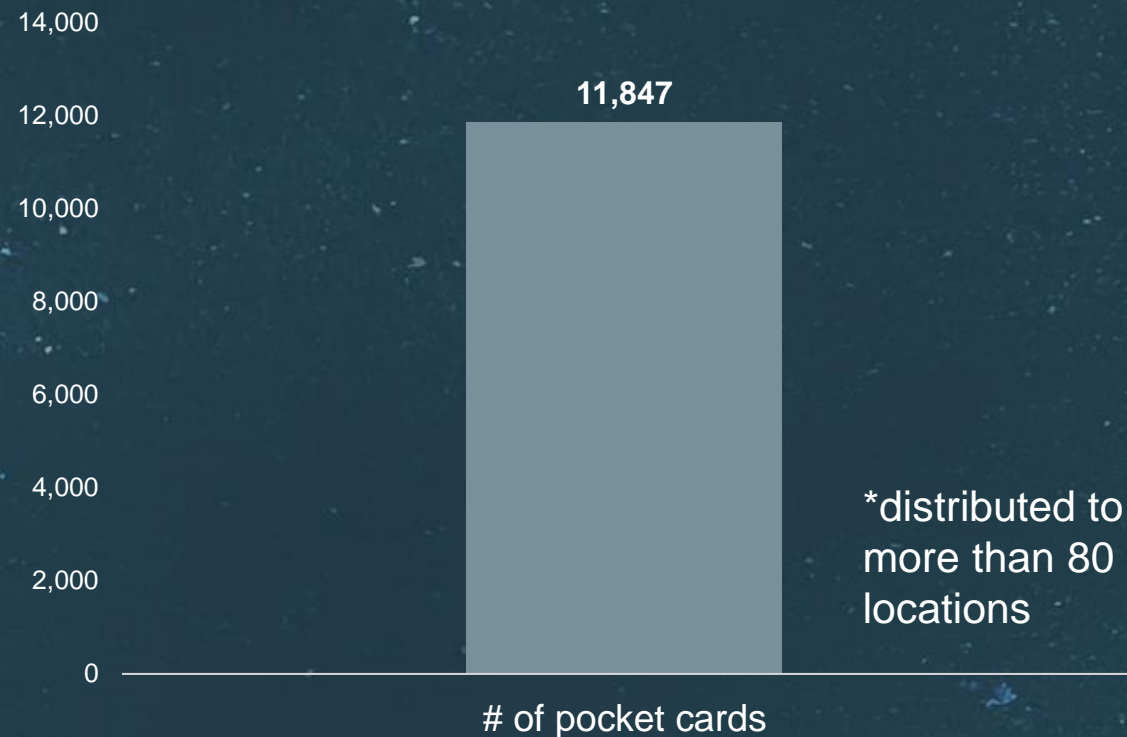
WHERE TO GO IF YOU'RE READY FOR WHAT'S NEXT

- I WANT TO GET MENTAL HEALTH AND/OR SUBSTANCE USE SERVICES
Call the ACCESS Program (1-800-491-9099) for screening & referrals
Call the Helpline (1-844-682-7215) for substance use treatment
- I WANT TO GET SUPPORT FROM OTHERS
AT A 12-STEP MEETING:
Call Narcotics Anonymous at (510-444-HOPE) | 444hops.org
Call the Alcoholic Anonymous 24 hours hotline at (510-839-8900)
- FEELING OVERWHELMED AND NEED TO TALK TO SOMEONE ABOUT WHAT'S HAPPENING?
Call or text the California Youth Crisis Line, 24 hours a day,
7 days a week (1-800-843-5200)

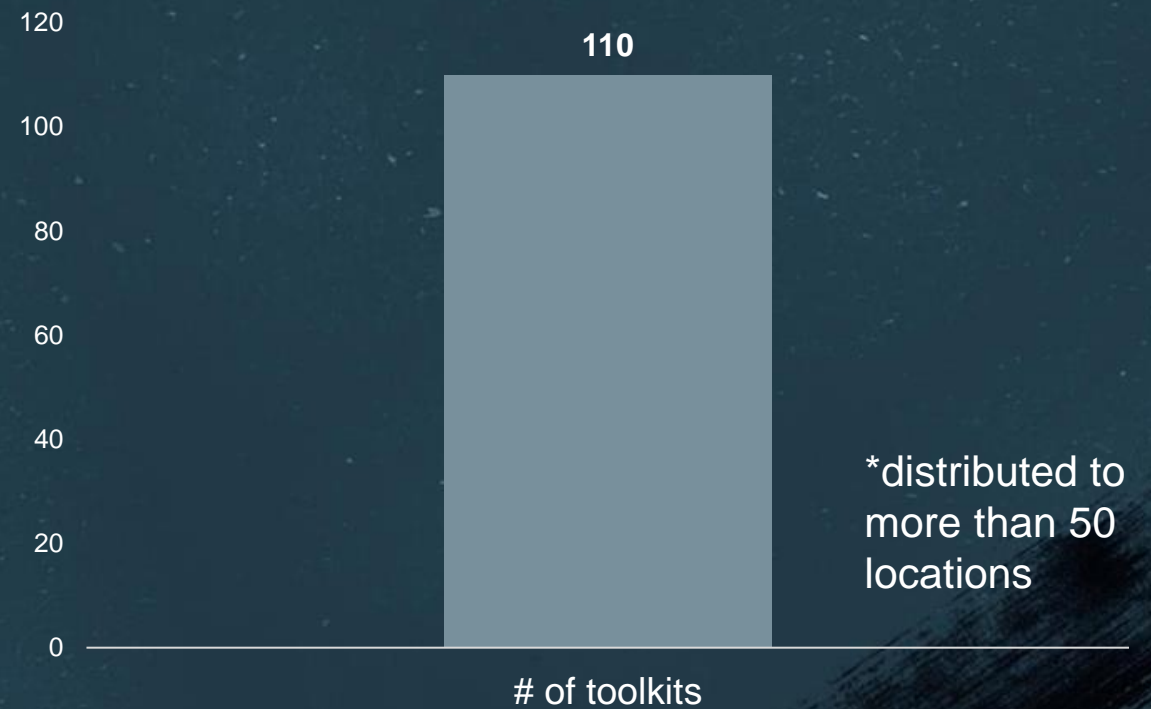
Resource distribution in Alameda County

April 1, 2021 - April 1, 2022

Pocket cards distributed

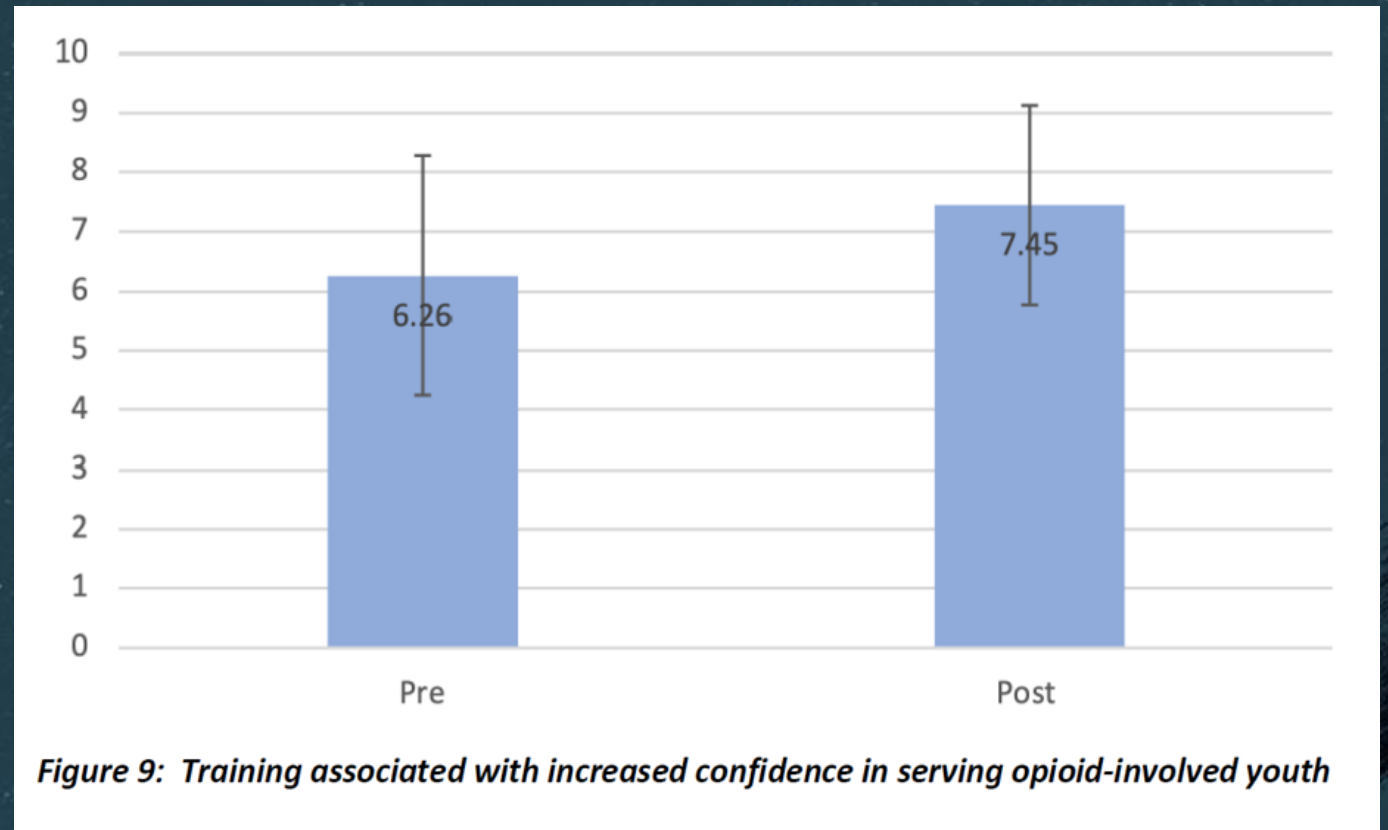


Toolkits distributed



Findings from the Training Series

- ✓ Significant reductions in stigmatizing feelings toward people who use opioids
- ✓ Significant decreases on scales that assessed *stereotypes* of people who use opioids
- ✓ Significant increases in the validated measure of *confidence in serving* opioid-involved youth ($p < .001$)



For a copy of the short-term outcomes report or other resources, email mschurig@acgov.org

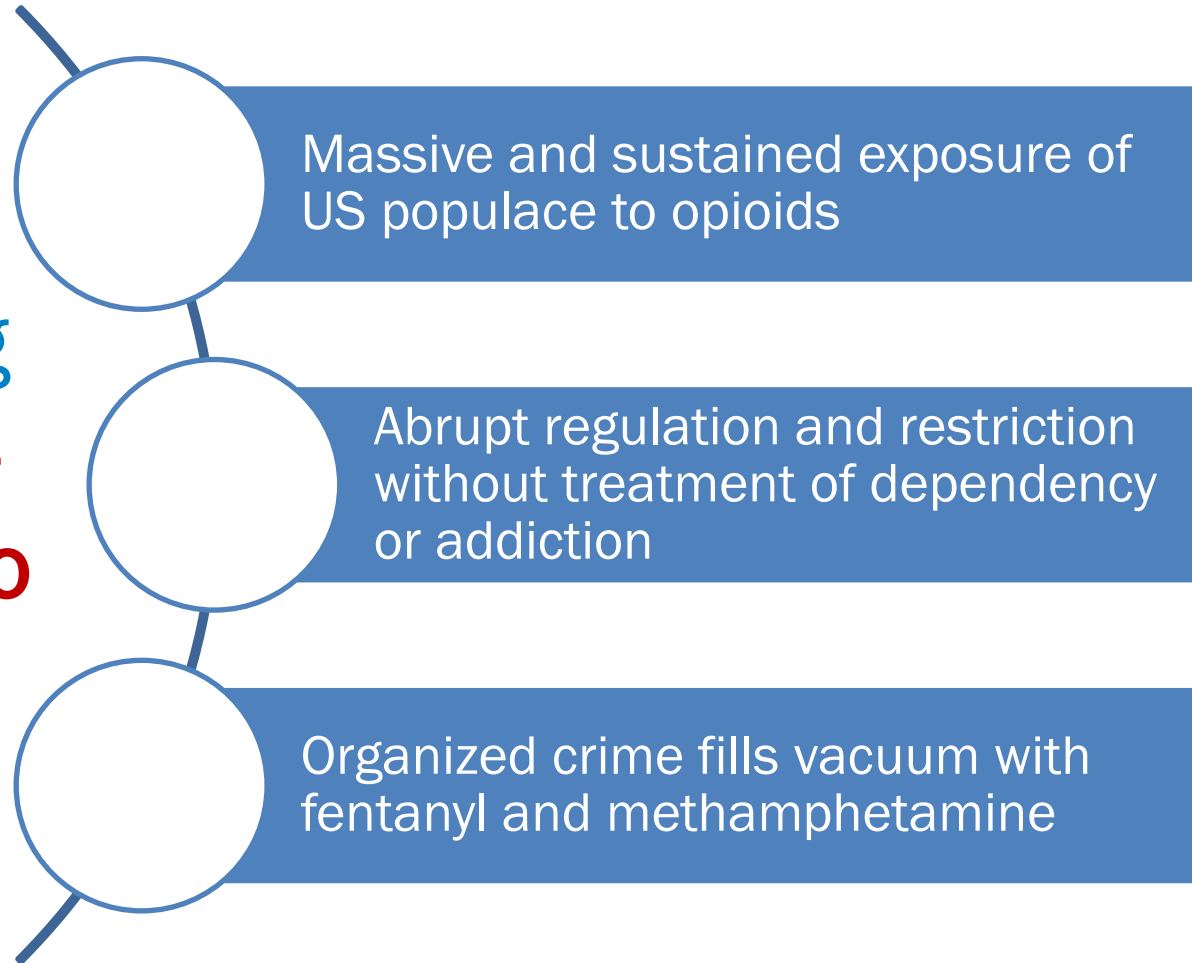
The Bridge: dynamic, pragmatic, regional scale access to Medications for Addiction Treatment (MAT)



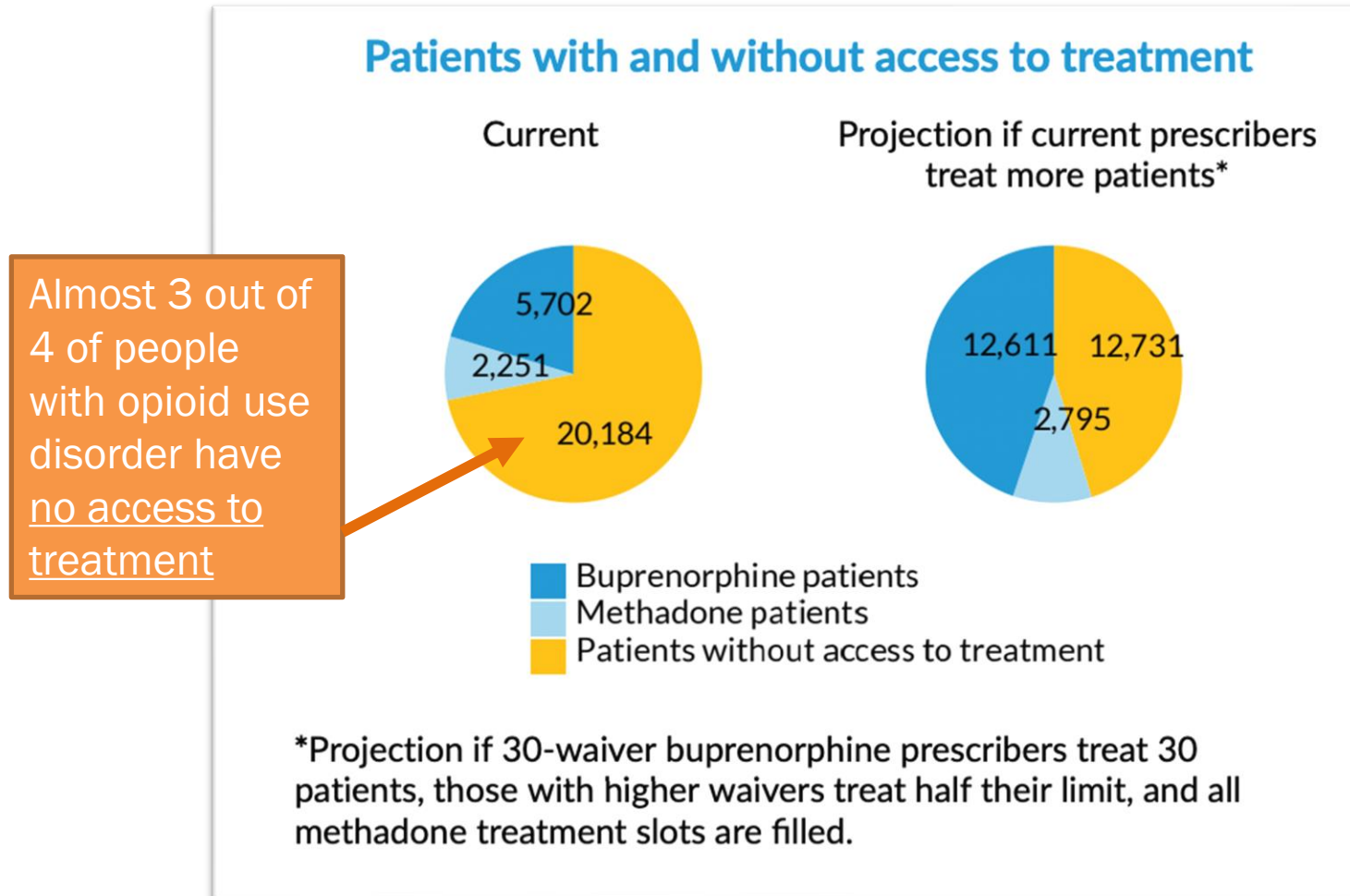
Andrew Herring, MD
Medical Director, Bridge Clinic

History is being written

We are living
in the **worst-
case scenario**



There Is Not Enough Treatment Access Here in Alameda County



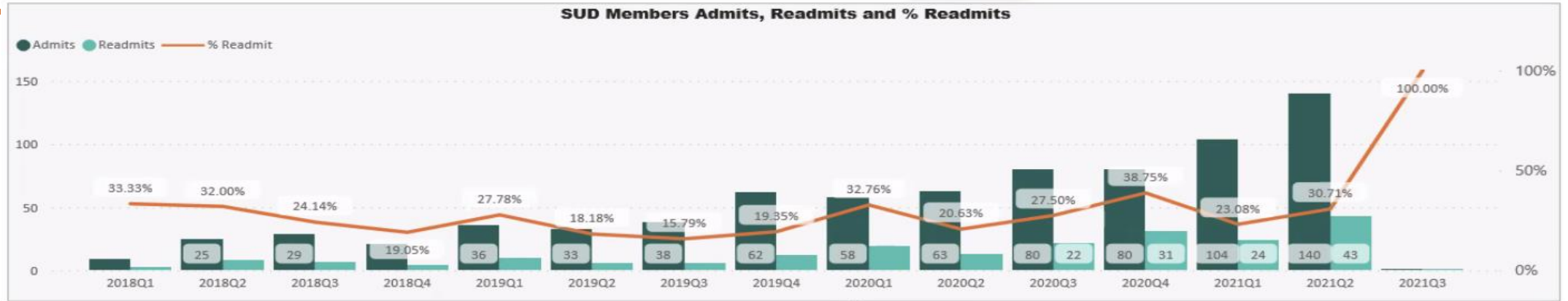
Huge demand for Bridge

Substance Use Disorder (SUD) Pilot - Summary

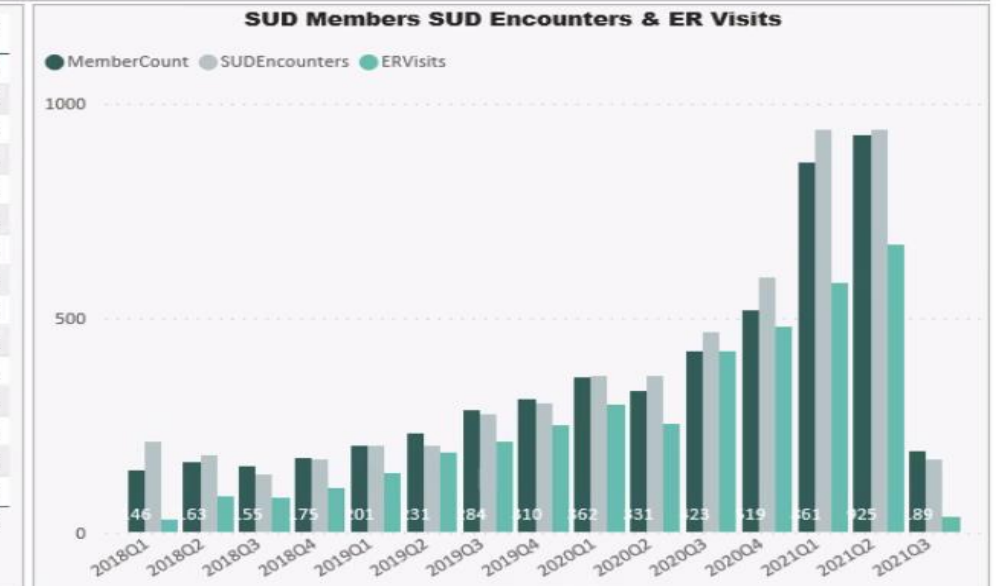
Time Period - 2019 , 2021 , 2020 , 2018

Data Refreshed on: 8/4/2021 10:24:12 AM

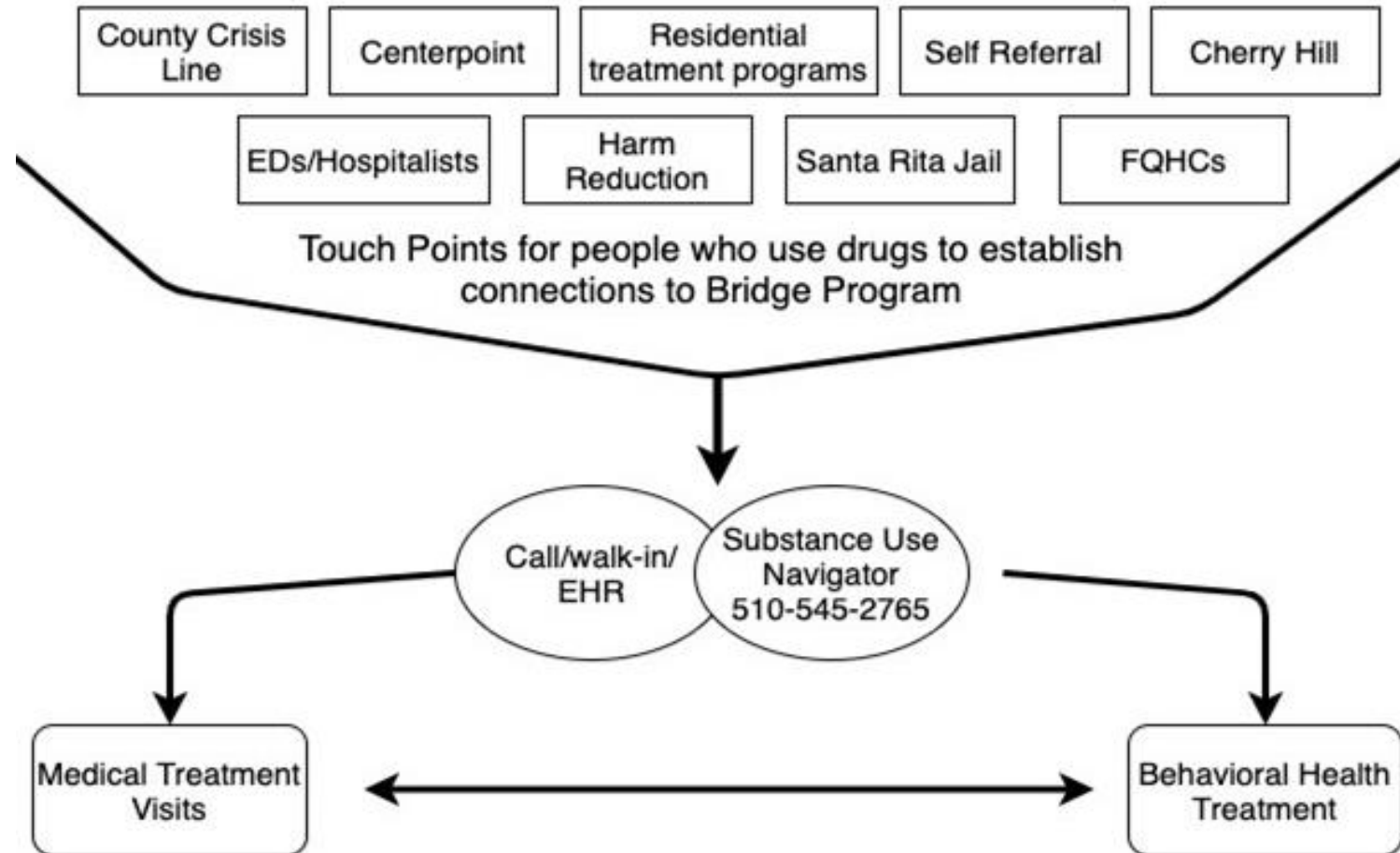
Clear All



| ServiceQTR | MemberCount | SUDEncounters | ERVisits | Admits | BedDays | ALOS | Readmits | % Readmit |
|--------------|-------------|---------------|-------------|------------|-------------|------------|------------|---------------|
| 2018Q1 | 146 | 213 | 29 | 9 | 28 | 3.1 | 3 | 33.33% |
| 2018Q2 | 163 | 179 | 85 | 25 | 90 | 3.6 | 8 | 32.00% |
| 2018Q3 | 155 | 136 | 80 | 29 | 154 | 5.3 | 7 | 24.14% |
| 2018Q4 | 175 | 169 | 102 | 21 | 114 | 5.4 | 4 | 19.05% |
| 2019Q1 | 201 | 203 | 140 | 36 | 222 | 6.2 | 10 | 27.78% |
| 2019Q2 | 231 | 202 | 185 | 33 | 146 | 4.4 | 6 | 18.18% |
| 2019Q3 | 284 | 277 | 211 | 38 | 180 | 4.7 | 6 | 15.79% |
| 2019Q4 | 310 | 300 | 251 | 62 | 326 | 5.3 | 12 | 19.35% |
| 2020Q1 | 362 | 364 | 299 | 58 | 314 | 5.4 | 19 | 32.76% |
| 2020Q2 | 331 | 365 | 254 | 63 | 275 | 4.4 | 13 | 20.63% |
| 2020Q3 | 423 | 467 | 422 | 80 | 299 | 3.7 | 22 | 27.50% |
| 2020Q4 | 519 | 594 | 480 | 80 | 439 | 5.5 | 31 | 38.75% |
| 2021Q1 | 861 | 939 | 581 | 104 | 391 | 3.8 | 24 | 23.08% |
| 2021Q2 | 925 | 938 | 672 | 140 | 670 | 4.8 | 43 | 30.71% |
| 2021Q3 | 189 | 169 | 37 | 1 | 2 | 2.0 | 1 | 100.00% |
| Total | 2299 | 5515 | 3828 | 779 | 3650 | 4.7 | 209 | 26.83% |



The Model: Partnership and collaborative care



24 -7 On Demand treatment



Substance Use Navigators

- Substance Use Navigators recruited
- Staffing Emergency Department and Inpatient Hospital Units

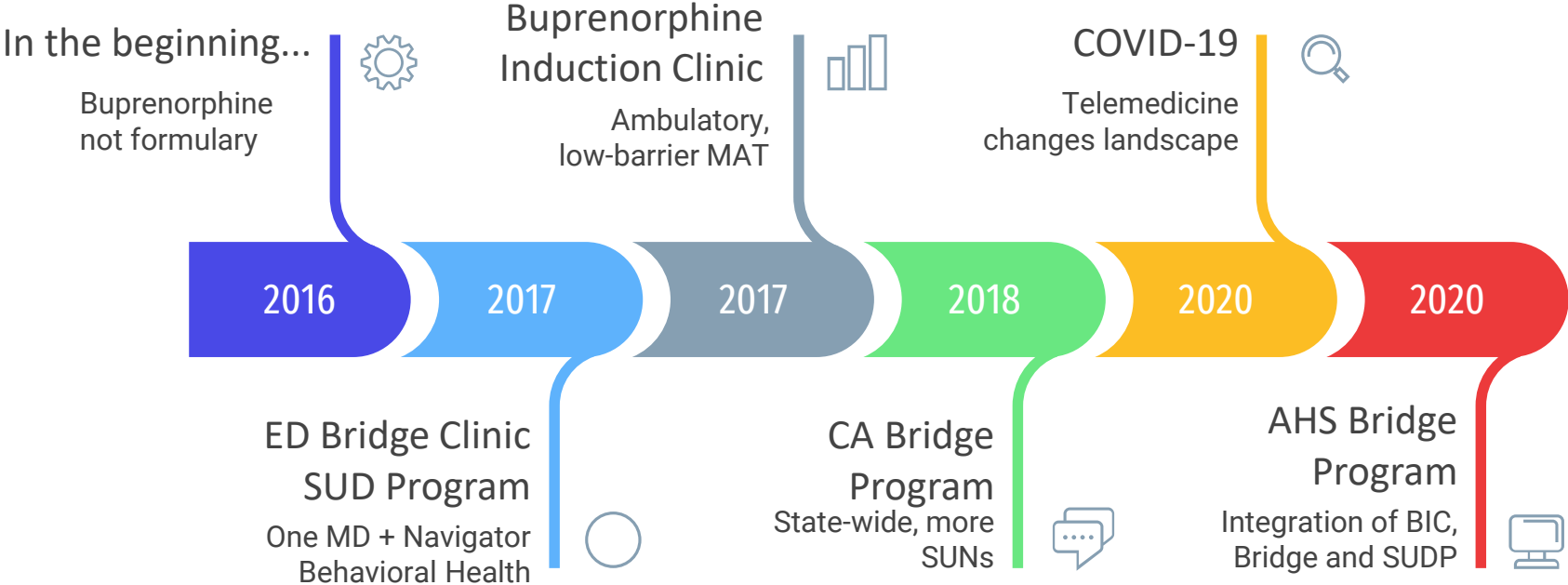


Harm Reduction Approach



A Timeline of the Bridge at AHS

- **Partnership with community touchpoints that reach high risk patients with use disorders**



The Future

- The Future
 - Work on reducing opioid prescriptions
 - Continued expansion of Narcan and MAT services
 - Expansion of SUD Treatment
 - Establish medical detox site

