



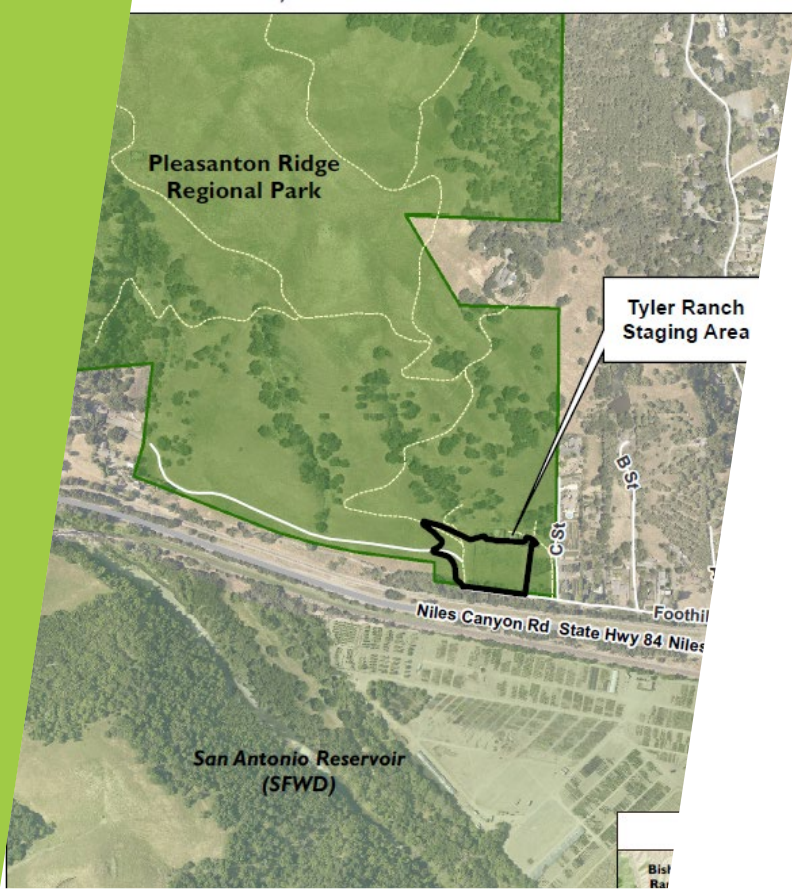
TYLER RANCH STAGING AREA & LAND BANK PROPERTY PUBLIC ACCESS

Pleasanton Ridge Regional Park

**Sunol
Citizens' Advisory Council
June 15, 2022**

TYLER RANCH STAGING AREA PUBLIC ACCESS

- Implements the 2012 Pleasanton Ridge Land Use Plan
- 3rd Staging Area for Pleasanton Ridge
- Adds 1,476-acres to the park
- Provides pedestrian/equestrian/bicycle access into the southern end of the park
- Adds 7± miles of new trails
- New connection to the Sunol Ridge Trail



TYLER RANCH STAGING AREA

PROJECT IMPROVEMENTS

- 70 Parking Spaces
- 3 Equestrian Parking & Staging
- Gated Park Entry
- Security Lighting
- Landscape screening and buffer for adjacent residences
- Drinking Fountain with Jug Filler
- Bike Rack
- Information Panel
- Small Family Picnic Area
- Vault Restroom
- Stormwater self-retaining areas to collect run-off



TYLER RANCH STAGING AREA



TYLER RANCH STAGING AREA



TYLER RANCH LOOP TRAIL



TYLER RANCH LOOP TRAIL

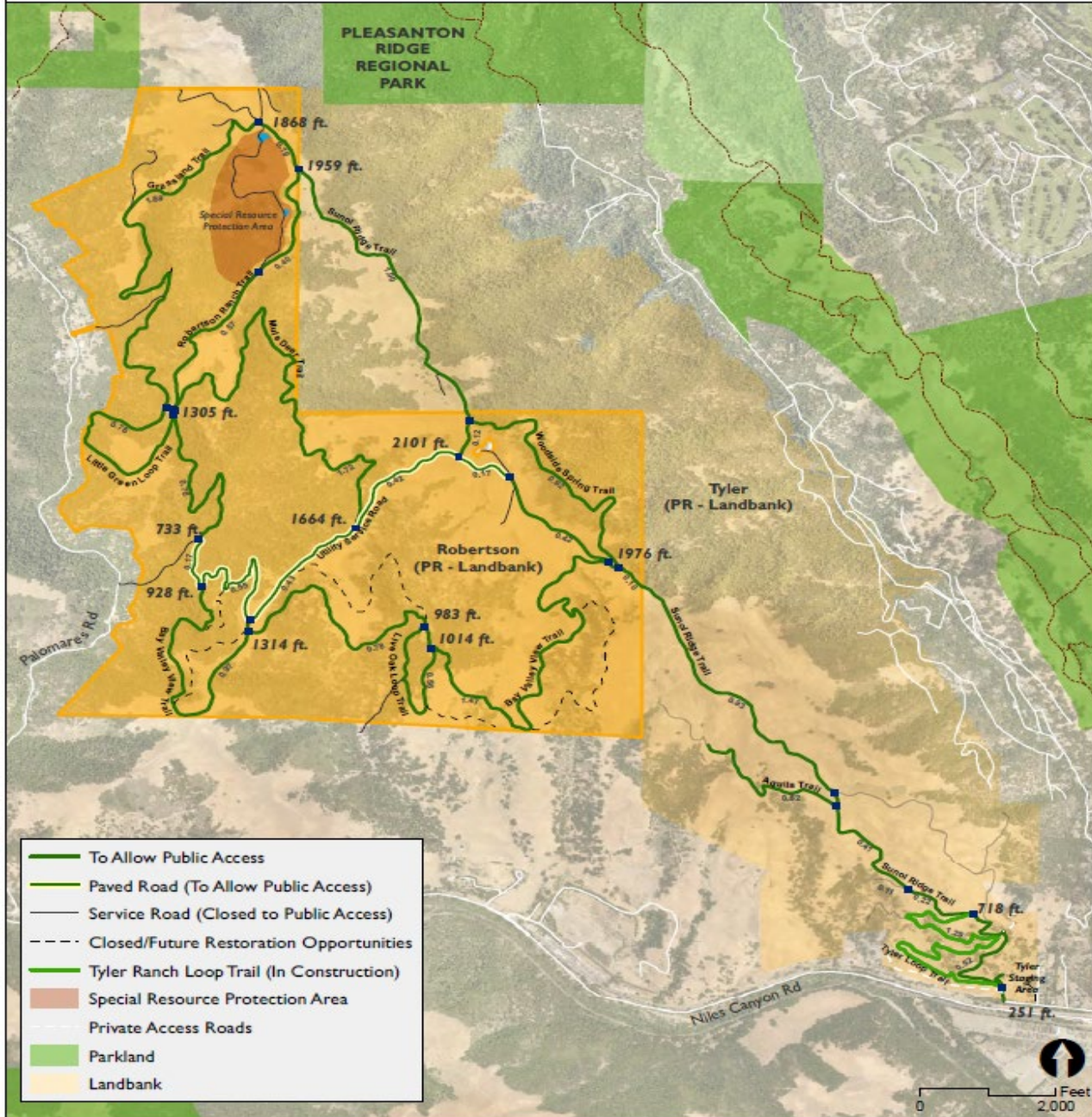


TYLER RANCH LOOP TRAIL



TYLER RANCH LOOP TRAIL





PLEASANTON RIDGE LANDBANK OPENING PROCESS

- ▶ Adds 1,368 acres to the park, including four parcels consisting of primarily unimproved lands.
- ▶ Acquisition anticipated that the property would be incorporated into Pleasanton Ridge Regional Park and opened to public access.
- ▶ Through a Checklist Amendment, the property & existing ranch roads can be opened alongside Tyler Ranch in summer/fall 2022

PLEASANTON RIDGE CHECKLIST AMENDMENT

- ▶ Opening Alongside Tyler Ranch Staging Area in Summer 2022
- ▶ Provides access from Tyler to Pleasanton Ridge
- ▶ Opens 13± miles of existing roads and trails to the public
- ▶ Sunol Peak on the property rises to 2,163 feet
- ▶ 1,367 acres previously used for cattle grazing



Thank You

