

Alameda County: District One

Supervisor Scott Haggerty

LIVERMORE · PLEASANTON · DUBLIN · FREMONT · UNINCORPORATED EAST COUNTY

Board Passes Balanced 2009-2010 Budget

Closing a \$178 million shortfall, on June 25 the Board of Supervisors passed a balanced \$2.4 billion budget for Fiscal Year 2009-2010. The root of this funding gap stems from an ailing economy combined with a State budget crisis which has reached a deficit of \$24 billion.

For the seventeenth consecutive year, the State diverted local property tax revenue away from Alameda County, taking many valuable local services along with it. In fact, the 2009-2010 county fiscal budget will reflect only those most essential services including state and federal mandated services, debt service obligations, and a minimum level of infrastructure maintenance funding.

Alameda County was forced to make reductions in areas such as Health Care, Public Assistance, and Public Protection. Here is a breakdown of some of the impacts:

- **Health care** - \$30 million reduction including the elimination of the Cost of Living Adjustments result-

ing in limited services for community based organizations and the Alameda County Medical Center.

- **Public Assistance** - closed a \$45 million gap with adjustments to the General Assistance program, which provides cash grants to indigent adults.
- **Public Protection** - \$40 million reduction causing 180 filled and vacant positions to be eliminated affecting emergency services, jail operations and resulting in the closure of the harbor patrol.
- **Probation Services** - impacted reducing the ability to supervise up to 450 violent adult offenders and eliminating supervision for nearly 500 juvenile offenders.
- **The District Attorney's Office** - reductions making it more difficult to prosecute less serious offenses as well as consumer and environmental crimes.

SEE BUDGET PAGE 2

Board Meetings Open to Public

The Alameda County Board of Supervisors meets every Tuesday and members of the public are welcome and encouraged to attend. All meetings take place at 10am on the 5th floor of the Alameda County Administration Building at 1221 Oak Street in Oakland.

This is located only three blocks from the Lake Merritt BART station.

For more information go to

www.acgov.org



ALAMEDA COUNTY
DISTRICT 1
NEWSLETTER

Volume 2, Issue 3

JULY 2009



Inside this issue:

Power Line Proposal	2
Rx Prescription Drug Discount Card	2
Boards & Commissions	3
Great Race Challenge	3
Contact Us	4
Community Calendar	4

BOARD REJECTS MAJOR POWER LINE PROPOSAL

On June 9, the Board of Supervisors voted unanimously to oppose a proposal by the Transmission Agency of Northern California (TANC) and the Western Area Power Administration (WAPA) to build and upgrade high-voltage transmission lines, substations and other related facilities. TANC proposed to extend the project across approximately 50 miles in Alameda County, through much of the scenic vineyard, parkland and open space in East County.

Residents publically expressed concerns that power lines would not only affect the agricultural and aesthetic qualities of the Livermore Valley which are

a vital part of that region's economy, but possible environmental impacts were a concern as well.

The Board also opposed the TANC project due to its lack of coordination between other energy providers, state oversight agencies and affected landowners. Finally, the Board was concerned about the piecemeal nature of the project and expressed the need for a State master plan for electrical infrastructure.

The project plan originated in Tracy and was set to extend over the Altamont and into Livermore. From Livermore the plan would move into the Sunol Valley and across the Sunol Regional Wilderness.

Budget

From Page 1

While the County budget is currently balanced it is bracing for the State to take final action to adopt its budget which is expected to result in more reductions in services. The State's proposals so far include:

- Reductions for In-Home Supportive Services (IHSS) for all, but the most severely disabled leaving nearly 14,000 county residents without care. IHSS enables aged, blind, and disabled individuals to remain living safely in their homes.
- Reductions for the California Work Opportunity and Responsibility to Kids (CalWORKS) program which provides short-term cash assistance to 20,000 families.
- Diversion of the gas tax which would mean a \$15—\$20 million loss per year for county road programs eliminating the jobs of 130 public works employees and all road maintenance activities including pothole repairs, debris removal, street sweeping and emergency response to downed trees.

2-1-1 is a free, non-emergency, confidential, 3-digit phone number and service that provides easy access to housing information, critical health and human services.

- Simply dial 2-1-1
- For cell phone users; dial: 888-886-9660
- 24 hours a day, 7 days a week



2-1-1 is powered by Eden ISR

www.edenir.org

New Rx Card to Save Residents on Prescription Drug Costs

On June 30, the Board of Supervisors adopted my proposal for a new prescription drug discount program. The Coast2Coast Rx card will be available free of charge to all Alameda County residents regardless of age, income level, or health status. The Rx card has saved cardholders an average of 38% and up to 65% over the last two years. While there are no eligibility requirements and county residents automatically qualify to use the Rx card, the program is expected to bring much needed savings to the uninsured, those with high insurance deductibles and those in need of prescriptions not covered by their current plans.

Not only does the Rx card come at no expense to

consumers, but the county will receive \$.75 per filled prescription for valuable public services. The Rx card will be available at participating pharmacies and may also be printed out online. In addition, cardholders with maintenance medications will be able to receive mail service and cardholders will be able to check online for participating pharmacies.

The Rx card may be used at over 180 locations in Alameda County and includes over 60,000 medications in its formulary.

For more information visit www.coast2coastrx.com/alamedaca.

Board and Commission Vacancies

The following are committees or boards that have one or more seats vacant. All District One residents are encouraged to apply for positions.

Consumer Affairs Commission

Promotes and protects the best interests of the consumer public; encourages the highest standards in the business community and to develop a high level of consumer awareness.

Mental Health Advisory Board

Perform advisory functions in matters relating to mental health.

Fish & Game Advisory

Advisory body to achieve conservation, propagation of fish and game. Funds from fines from citations issued by Fish and Game. Must have fish/hunting license.

Public Health Commission

Serves as an advisory body to the Board of Supervisors.

ACTIA: Bicycle and Pedestrian Advisory Committee (BPAC)

Looking for people interested in improving the safety and convenience of bicycling and/or walking in Alameda County.

For more information, contact District 1 Offices (see pg 4), send résumés via email to verer.bates@acgov.org or fax to (925) 484-2809 Attn: Vener Bates

Great Race for Clean Air Challenge

The annual Spare the Air season officially kicked off in May and will continue through October. When the Bay Area Air Quality Management District declares a Spare the Air day, residents are encouraged to use alternatives to solo driving such as transit, carpools, biking and walking. This year a new program targeting Tri-Valley businesses, the Great Race for Clean Air Challenge will take place during the months of August and September.

Launched in 2008 the Great Race Challenge is a way for businesses to compete with each other by encouraging their employees to use alternative

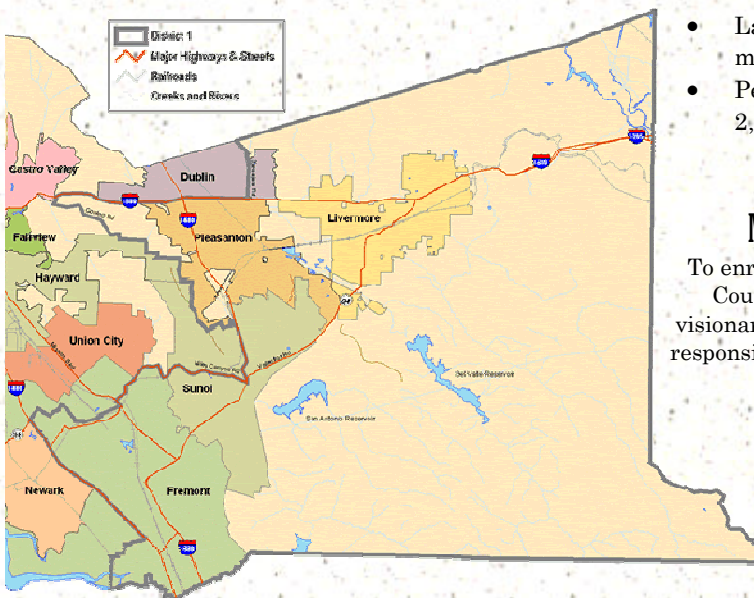
ways to get to work. The program also gives employees the chance to experiment with different work traveling methods and see which works best for them.

To sign up for Spare the Air Alerts visit www.sparetheair.org.

For more information on the Great Race for Clean Air Challenge contact Stephanie Anderson sander-son@communityfocus.org or (510) 763-2500 ext. 1.



DISTRICT ONE MAP



Alameda County Demographics

- Population: 1,526,148
- Land Area: 738 sq. miles
- Persons per sq. mile: 2,068

Mission Statement:

To enrich the lives of Alameda County residents through visionary policies and accessible, responsive, and effective services.

My Boards and Commissions:

Altamont Rail Express Joint Powers Authority (ACE)

Alameda Congestion Management Agency (CMA)

Alameda County Transportation Authority (ACTA/ ACTIA)

Association of Bay Area Governments (ABAG)

Bay Area Air Quality Management District (BAAQMD)

California State Association of Counties (CSAC)

Collaborating Agencies Responding to Disasters (CARD)

East Bay Regional Communications System (EBRCS)

East Bay Regional Park District County Liaison (EBRPD)

Local Agency Formation Agency (LAFCO)

Livermore- Amador Valley Transportation Authority (LAVTA)

Metropolitan Transportation Commission (MTC)

National Association of Counties (NACo)

Oakland Alameda County Coliseum Authority (JPA)

Personnel Administration and Legislative Committee (PAL)

Transportation and Planning

Tri-Valley Transportation Council (TVTC)

CONTACT THE DISTRICT ONE OFFICES

District One **Oakland** Office:
 1221 Oak Street, Ste. 536
 Oakland, CA 94612
 Phone: 510.272.6691
 Fax: 510.208.3910

District One **Pleasanton** Office:
 4501 Pleasanton Avenue
 Pleasanton, CA 94566
 Phone: 925.551.6995
 Fax: 925.484.2809

District One **Fremont** Office:
 (by appointment only)
 39439 Paseo Padre Pkwy
 Fremont, CA 94538
 Phone: 510.796.2525

District One Contacts:

Main Email, district1@acgov.org

Chris Gray, Chief of Staff chris.gray@acgov.org

Dawn Argula, Deputy Chief of Staff dawn.argula@acgov.org

Joe Gordon, Supervisor's Scheduler joe.gordon@acgov.org

Lee Ann Ferguson, Office Manager : Oakland leeann.fergerson@acgov.org

Vener Bates, Pleasanton Staff vener.bates@acgov.org


Josh Thurman, Policy Analyst josh.thurman@acgov.org

Keith Flavetta, Office Intern keith.flavetta@acgov.org

County and Local Events Calendar

July 2009

**Add your community events
 by emailing us at
district1@acgov.org

Sunday	Monday	Tuesday	Wednesday	Thursday	Friday	Saturday
Location Key : Livermore Pleasanton Dublin	Fremont Sunol AC Fairgrounds		1 County Fair Begins	2	3 Fireworks Spectacular, 9:15 PM, Grandstands	 Independence Day
5 Niles Canyon Railway 10:30AM-3PM Killkare & Main St.	6 Fair closed	7	8 Seniors Free Wednesday, AC Fair	9 Summer Concert Series 6:30 PM, Central Park	10 The Groove Kings, 7-9 PM, Dublin Civic Ctr.	11 Dublin Family Camp Out, Alamo Creek Park, 3PM
12	13 Fair closed	14 Board of Supervisors Mtg., 1221 Oak Street, 11AM	15 Seniors Free Wednesday, AC Fair	16	17 Livermore Shakespeare Festival 7:30 PM, Concannon Vineyards	18 Rotary Chili Cookoff 11AM-5PM, The Saddle Rack
19 County Fair Ends	20	21	22 Plug into the Green Economy 5-7 PM, Civic Center	23 Summer Star Party 8-9:30 PM, Amador Rec Center	24 Christmas in July 5-9PM, Downtown	25 CA's First People 9:30-11:30 AM, Alviso Adobe Comm Park
26 Niles Canyon Railway 10:30AM-3PM Killkare & Main St.	27	28 Board of Supervisors Mtg., 1221 Oak Street, 11AM	29	30	31 Outdoor Movie Night 7:30PM, Emerald Glen	