



# **ALAMEDA COUNTY ECONOMIC AND BUDGET OVERVIEW**

---

By Susan S. Muranishi  
County Administrator  
November 30, 2009

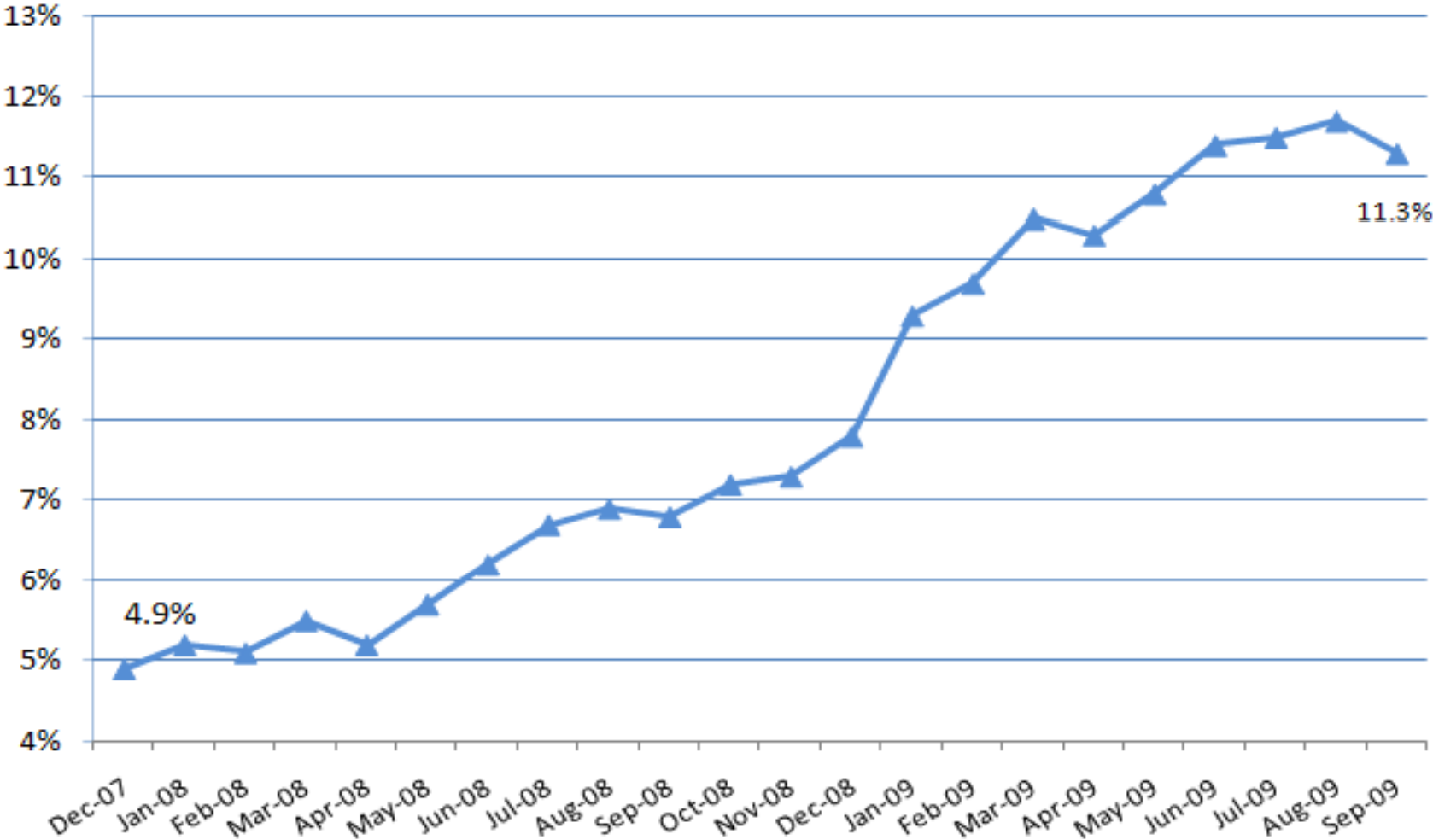


# Economic Update

---



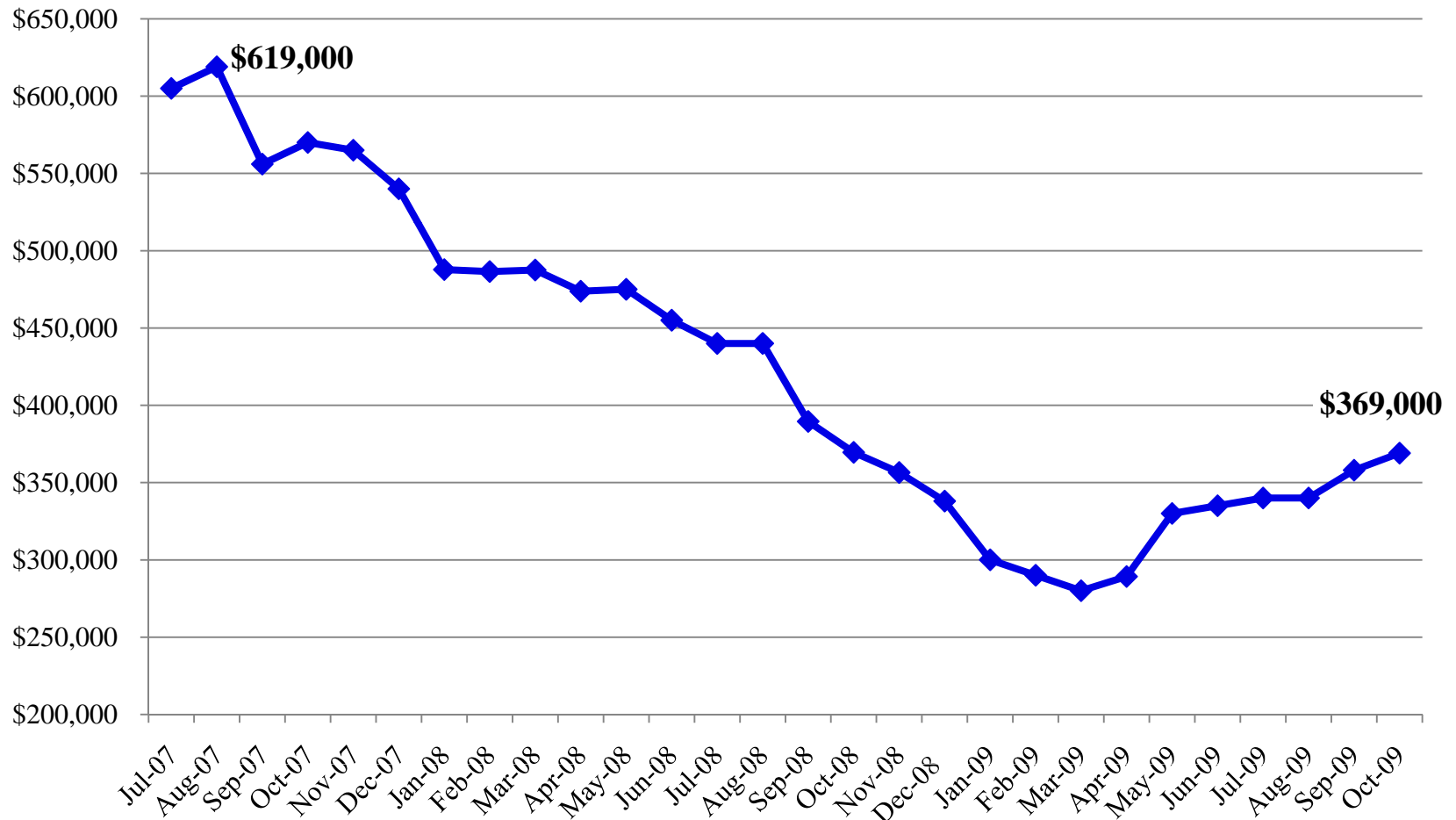
# Alameda County Unemployment Rate Since Recession Began



Source: CA Dept. of Employment Development  
11/16/09

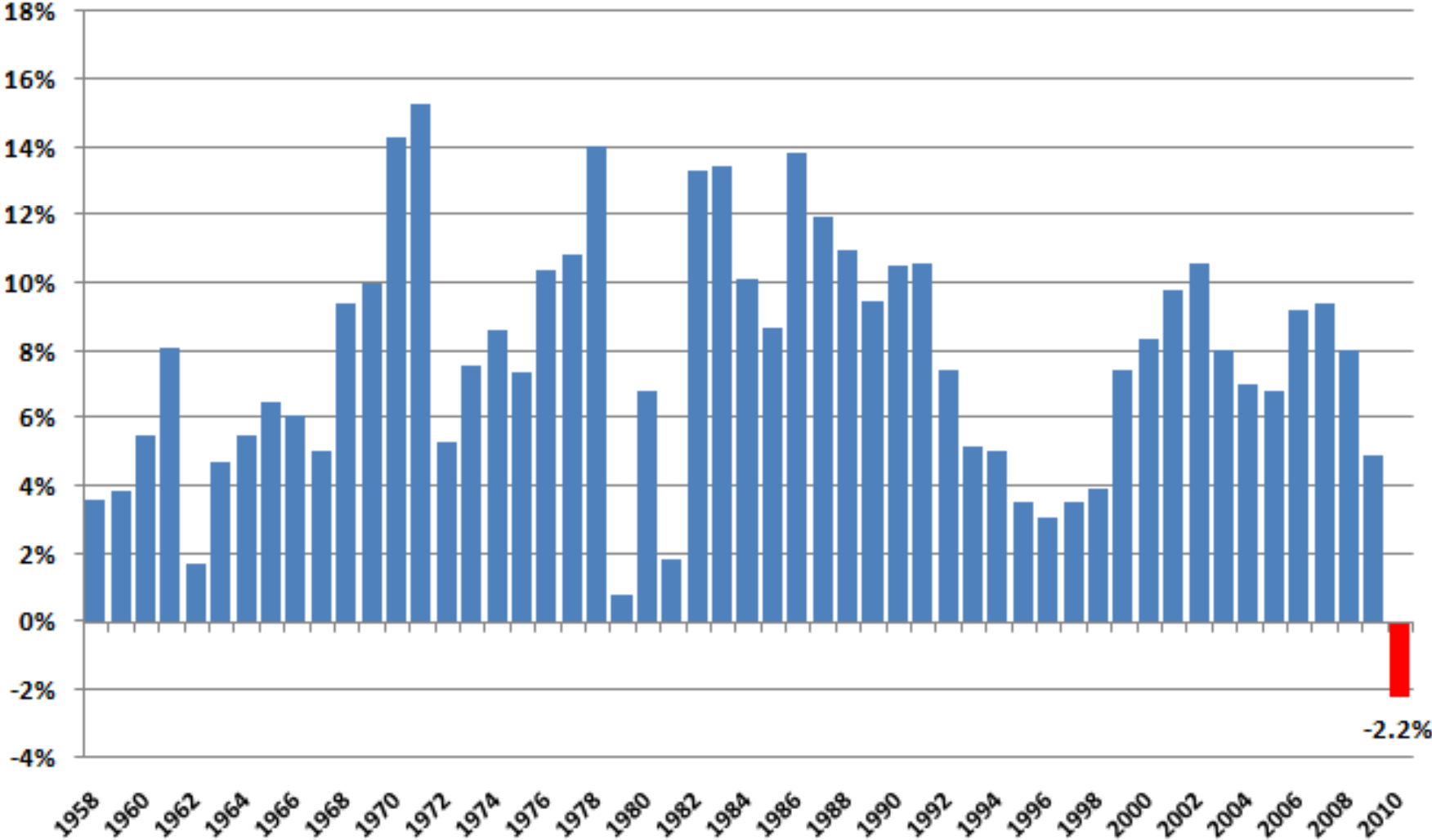


# Alameda County Median Home Values July 2007 – Oct 2009



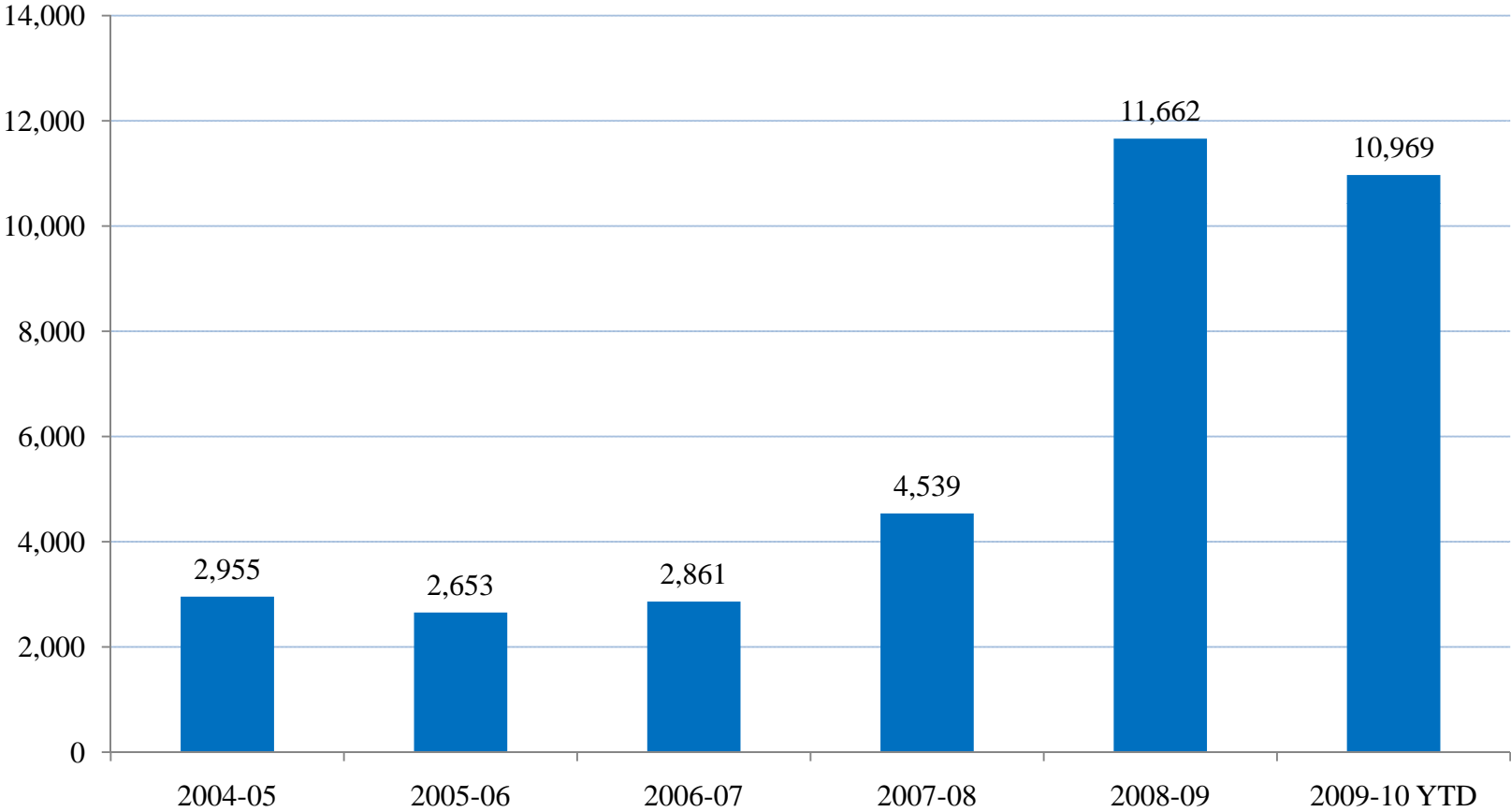


# Assessment Roll—Percent Change Alameda County





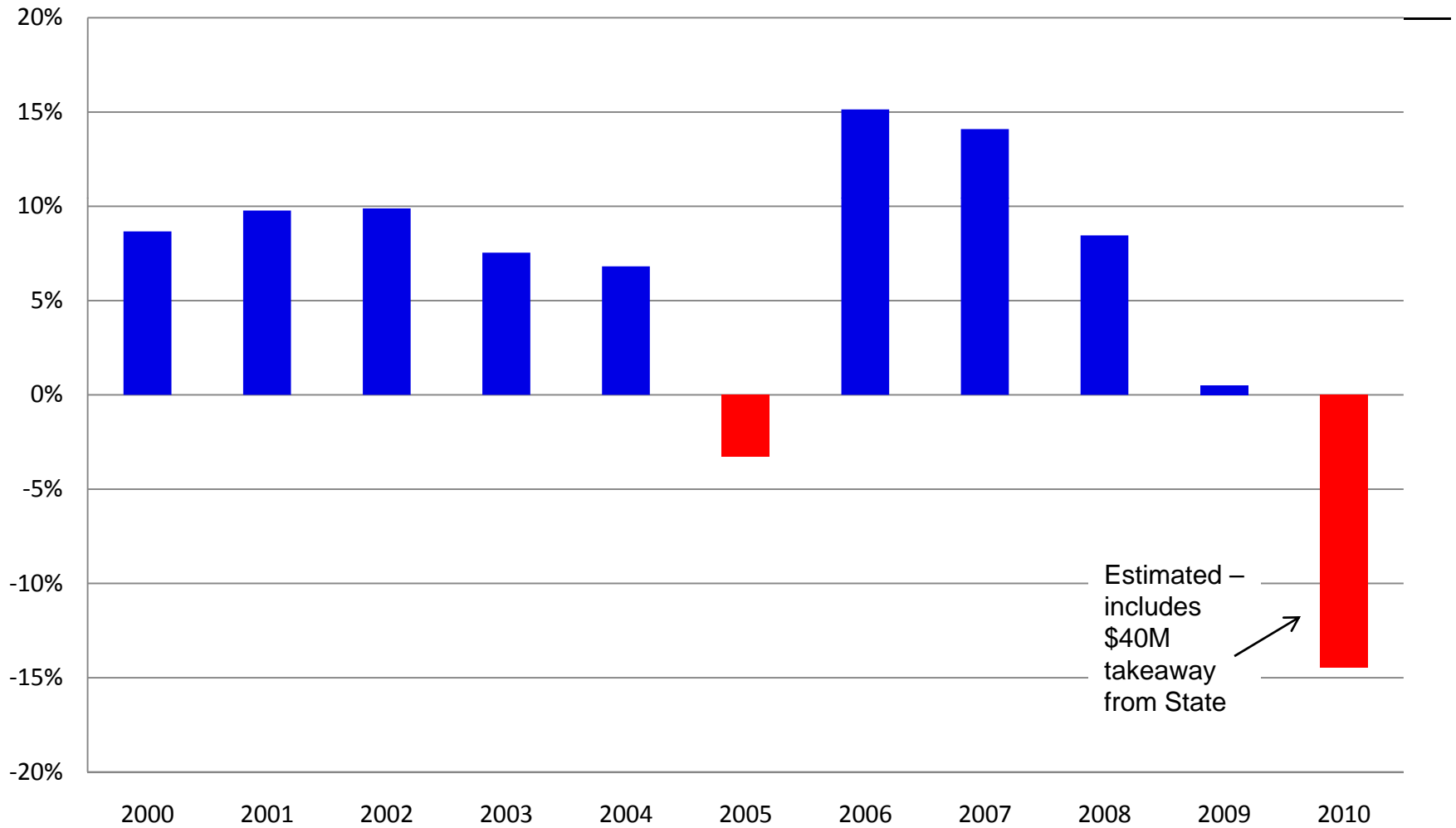
# Assessment Appeals Filed



Note: Filings for 2009-10 continue until June 30, 2010.



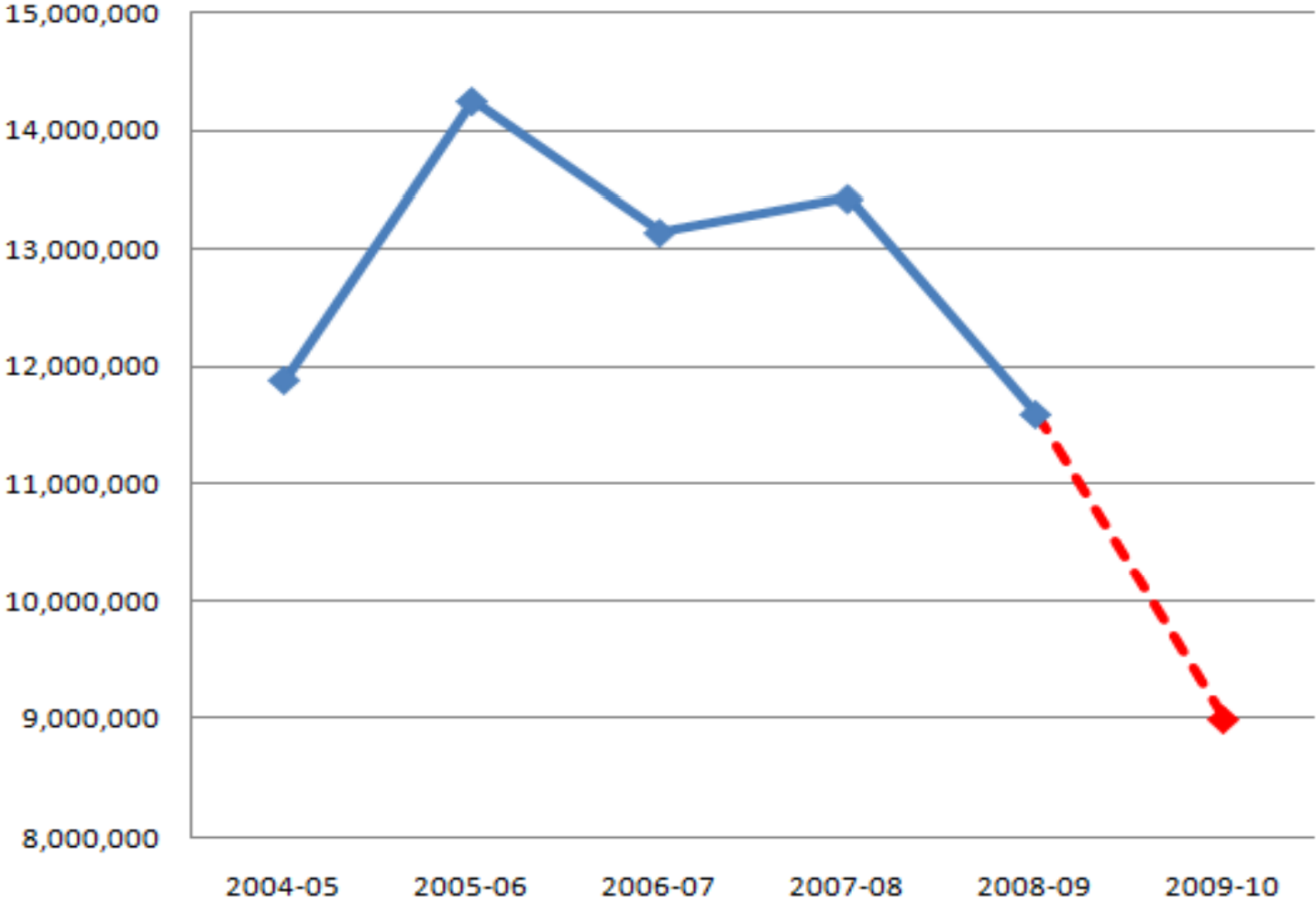
## Secured Property Tax Percent Change



upd 8/25/09



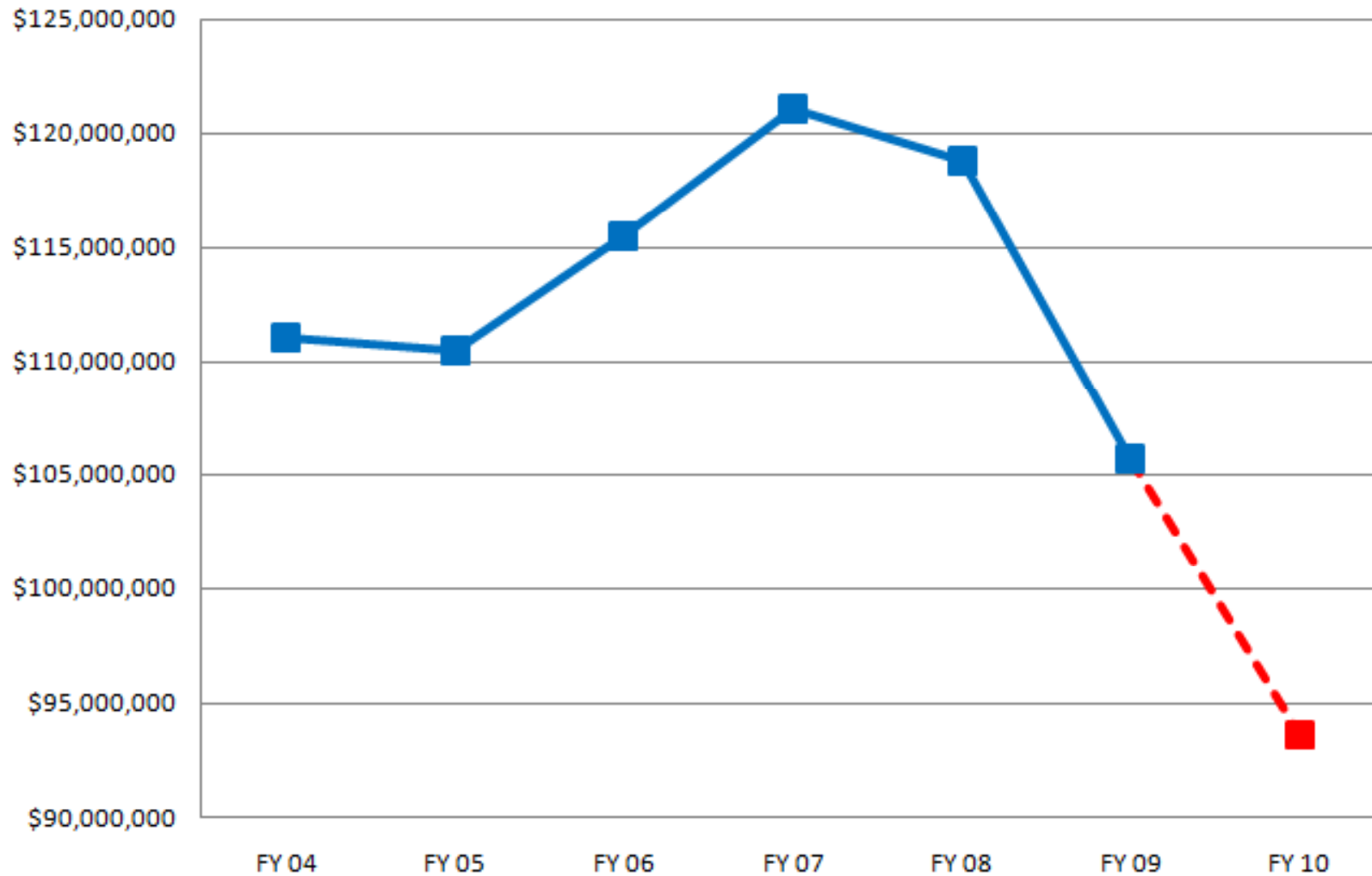
# Sales Tax Revenues



Upd  
11/16/09

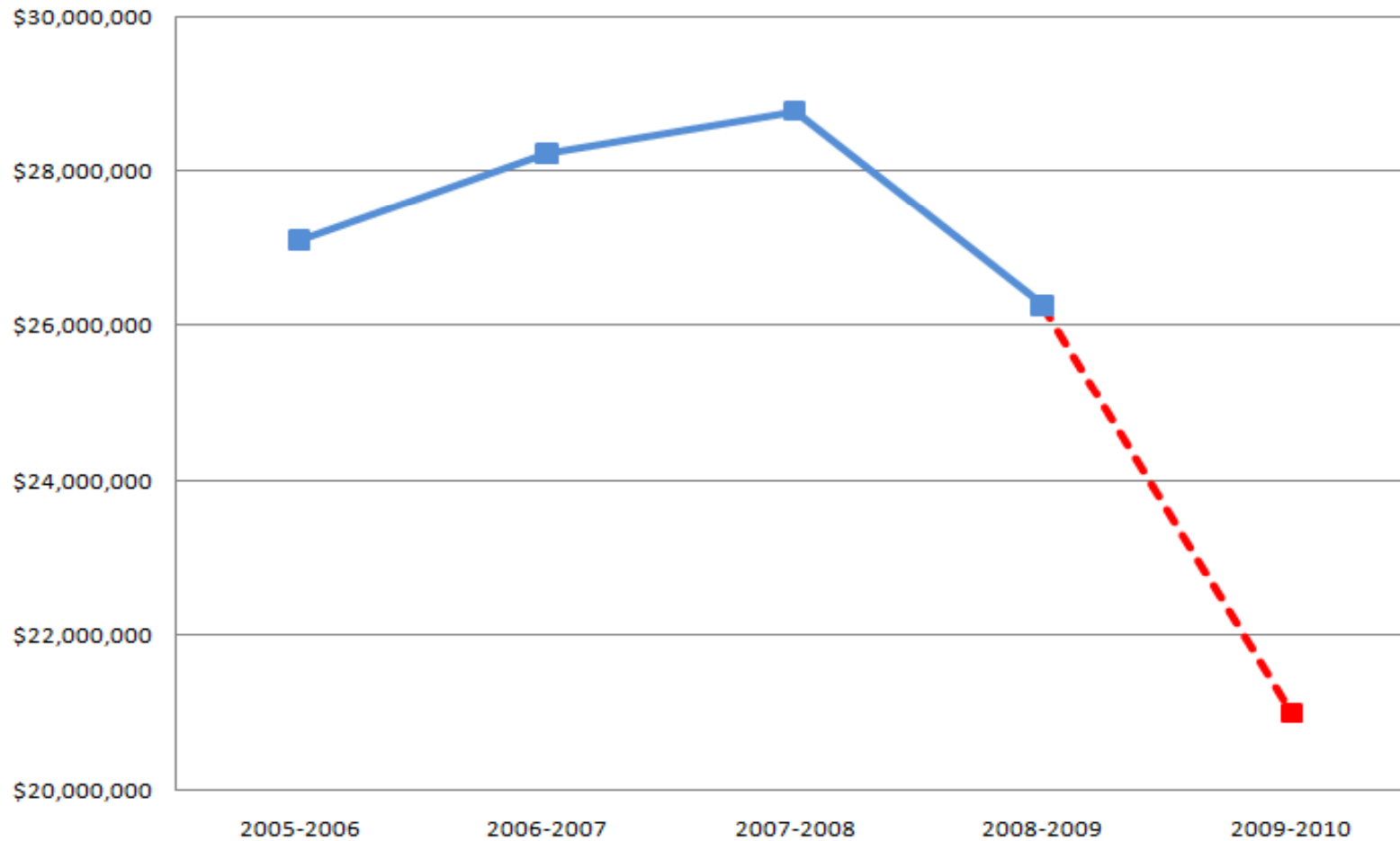


## Prop. 172 Sales Tax Revenues



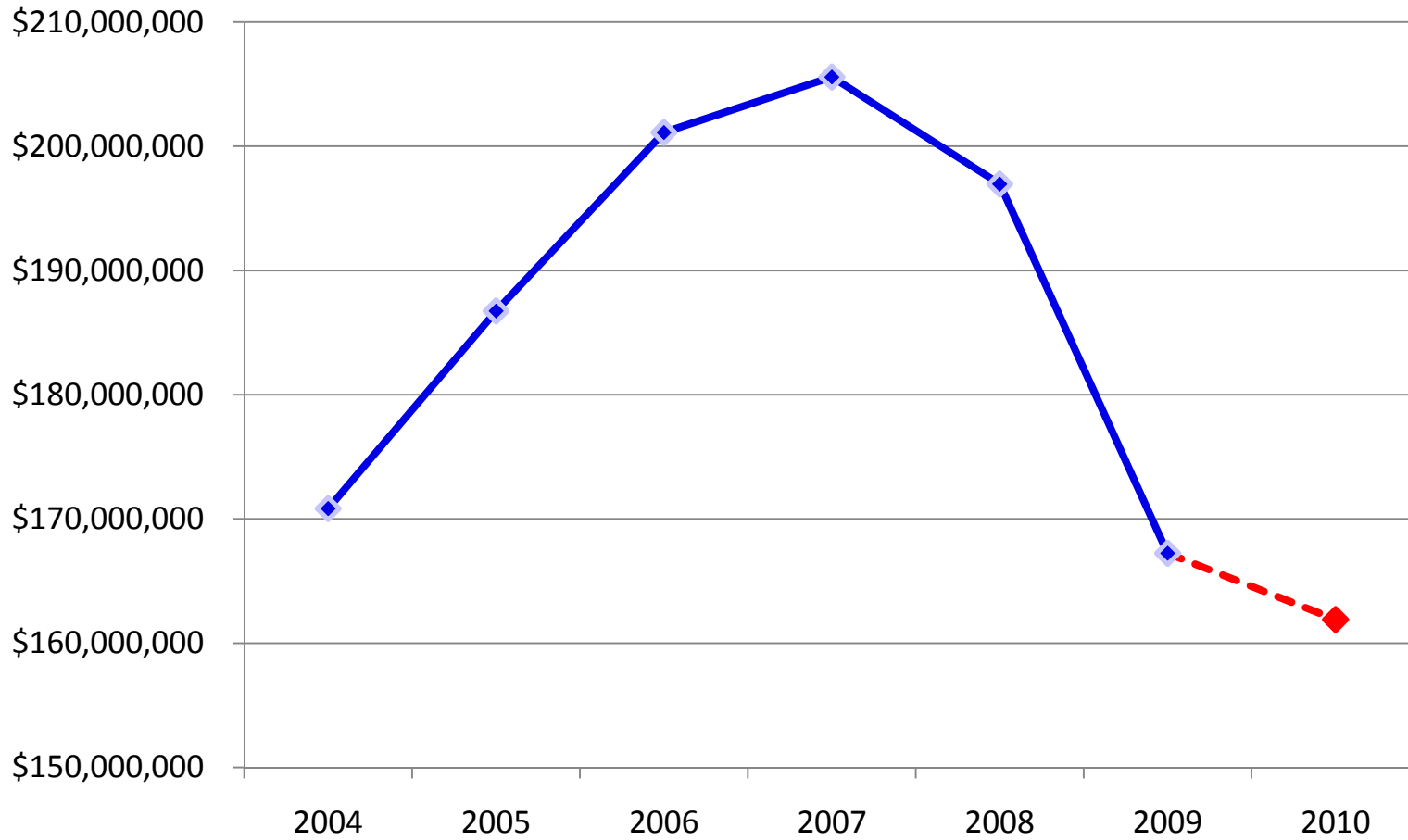


## Measure A Revenues—County Share



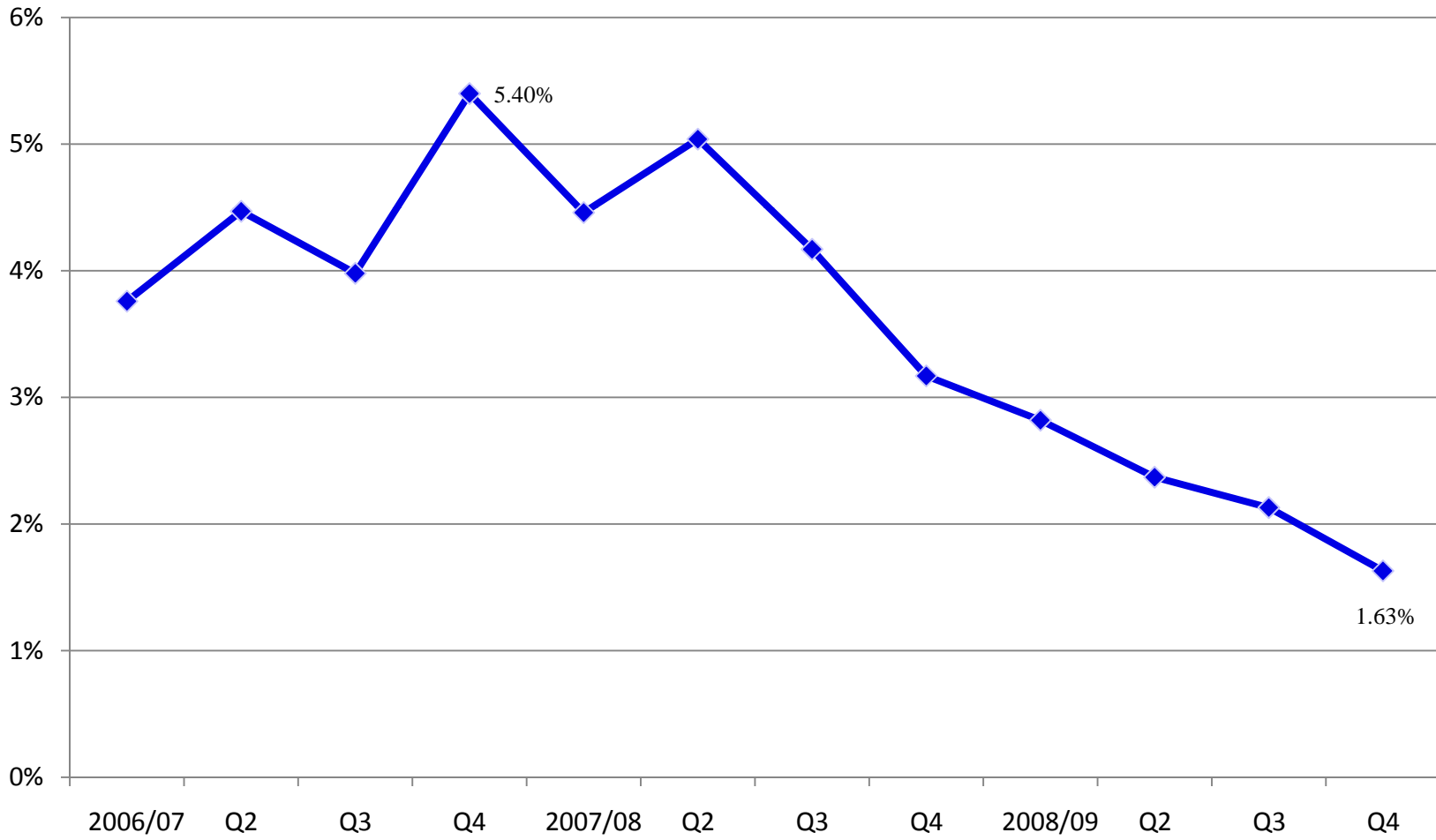


# Realignment Revenues





# Quarterly Interest Rate for Investment Pool





## Increased Demand for Services

---

- Dramatic increase in caseloads for assistance programs, including:
  - CalWORKS
  - Food Stamps
  - General Assistance
  - Medi-Cal
- Increased Jail, Juvenile Justice Facility populations

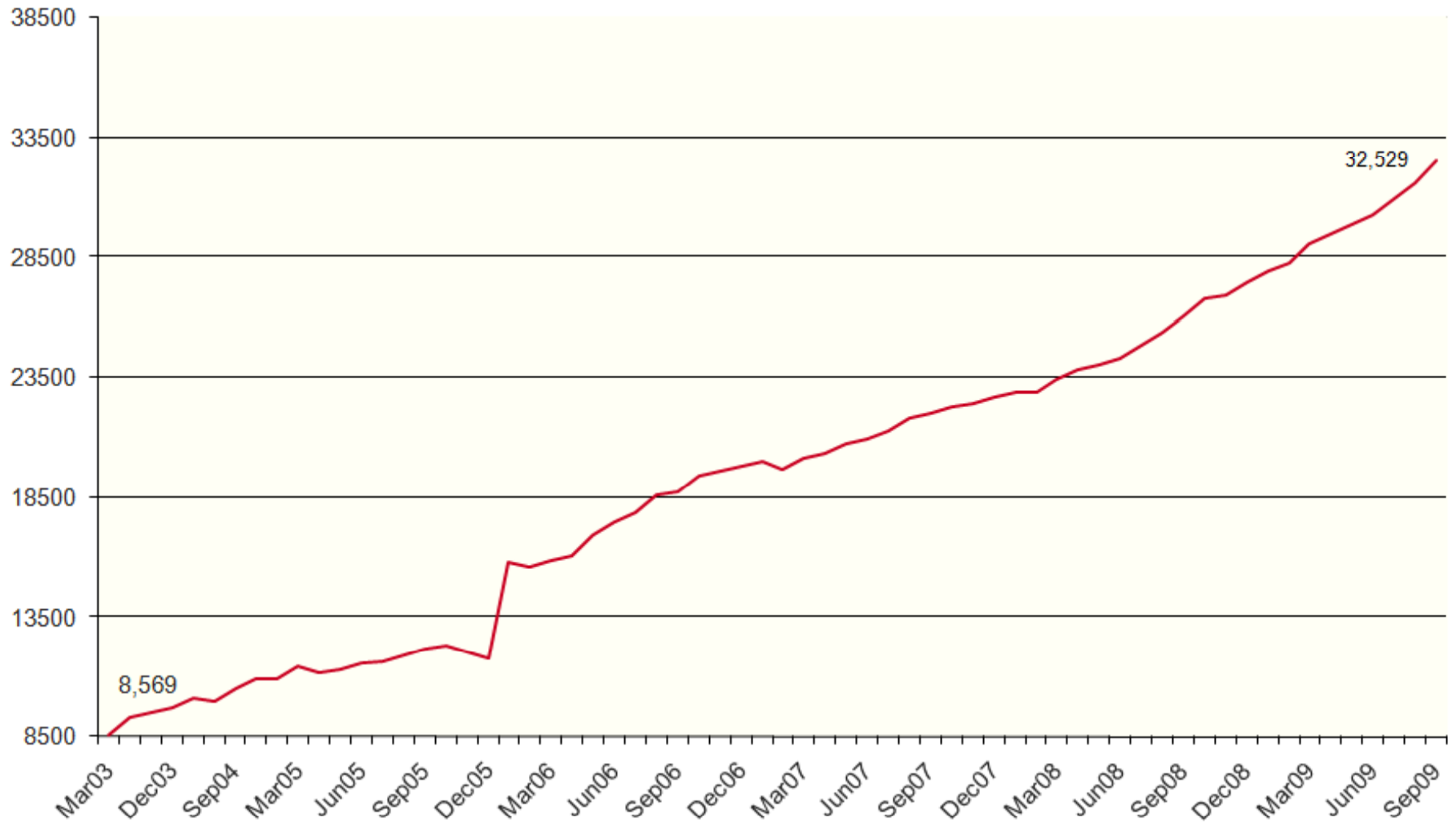
### CalWORKS



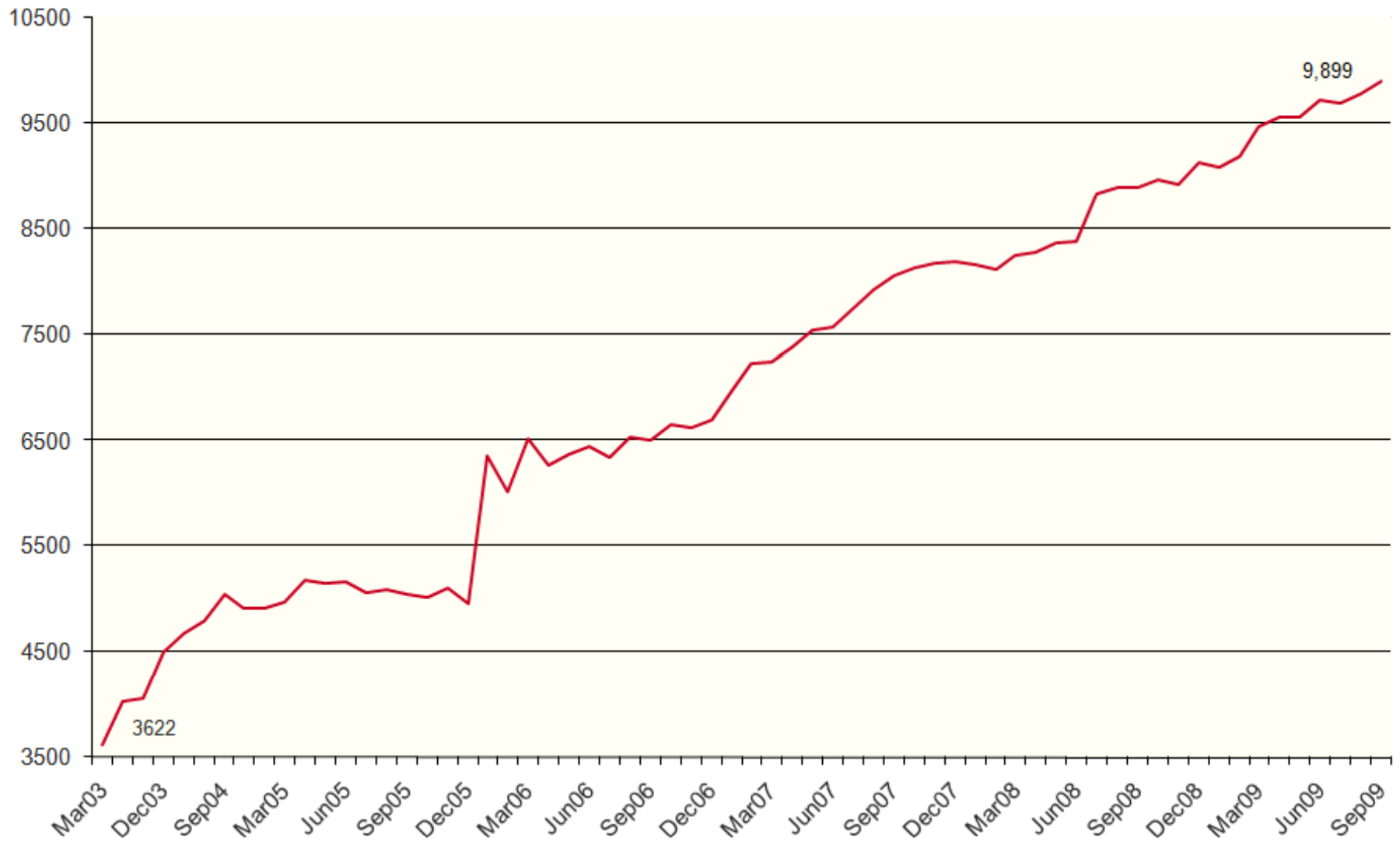
### Non-Assistance MediCal



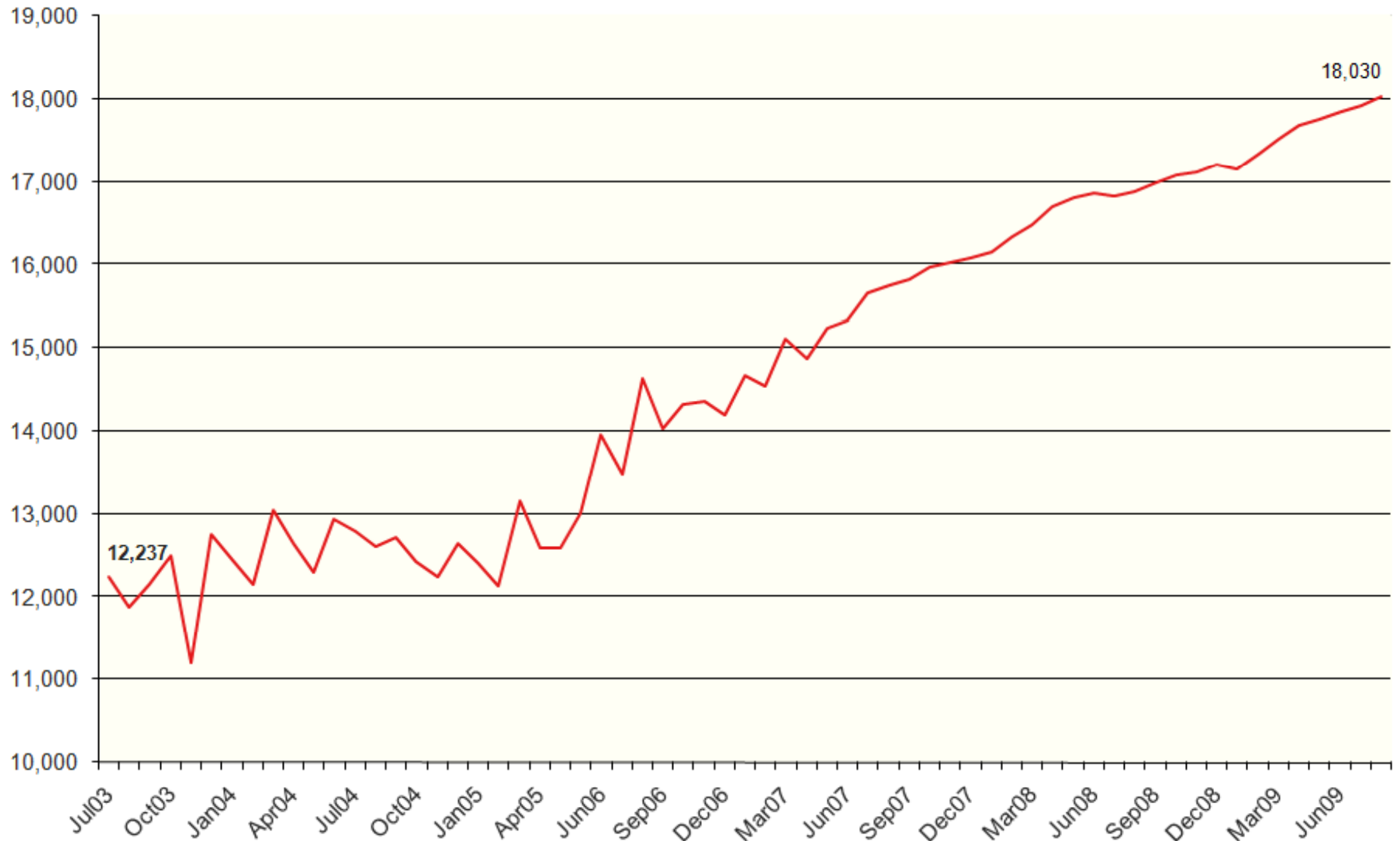
### Non-Assistance Food Stamps



### General Assistance



### In-Home Support Services



Upd  
10/02/09



# Economic Forecast

---

- Personal income, employment will fall through mid-2010
- Little change in home prices through 2010
- Foreclosures down from peak, but may increase again as mortgages reach reset date
- Taxable sales to decline another 3%
- Big impact on local government budgets
  - Declining home prices will impact property tax, transfer tax, sales taxes for years to come
- As in 2001 recession, recovery will be hampered by State and local government & education job losses resulting from impact of State Budget cuts



# Alameda County FY 09-10 Budget

---



# FY 2009-10 Final Budget - All Funds

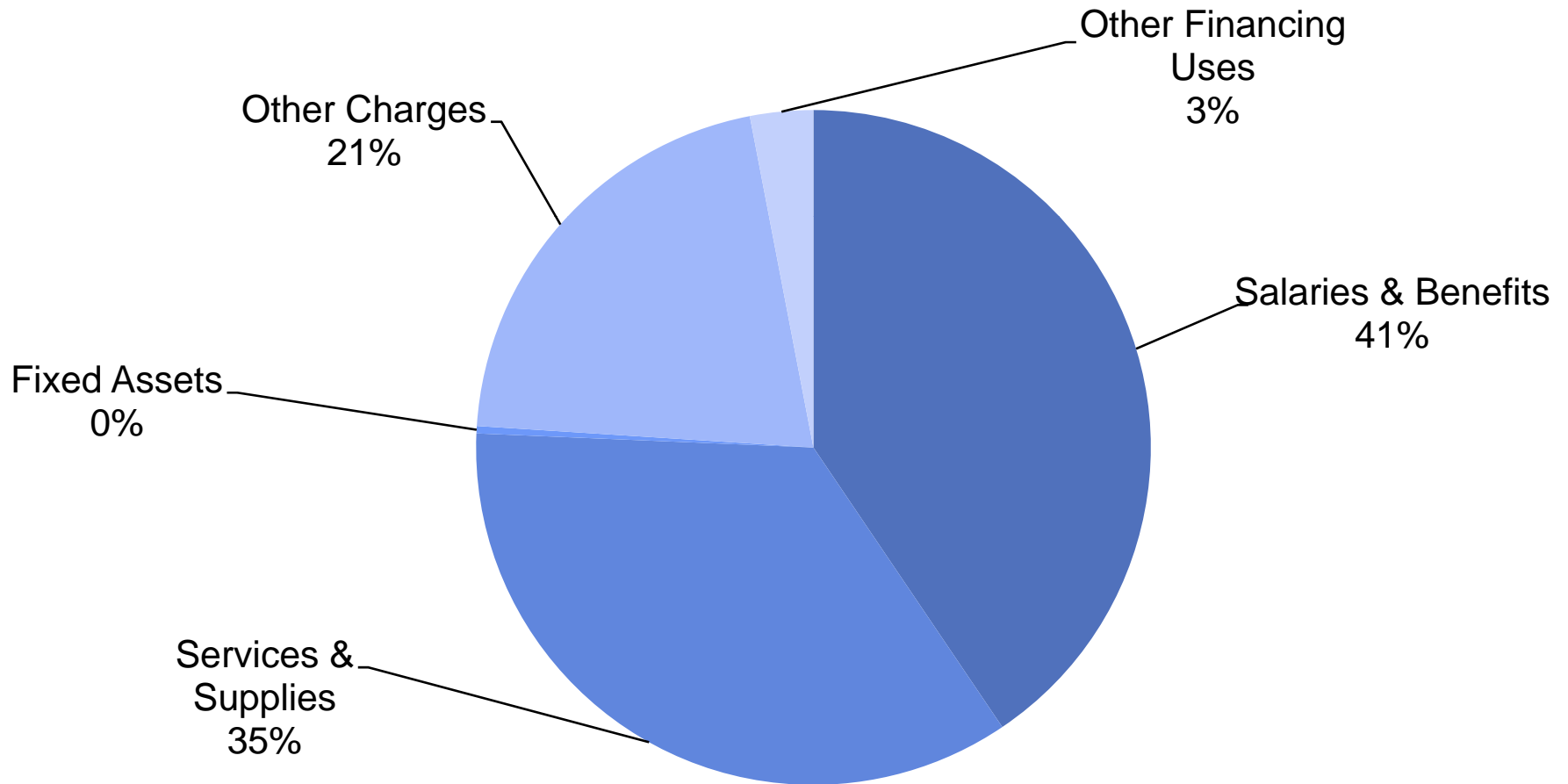
(in millions)

	FY 2008-09	FY 2009-10	Inc/ (Dec)	% Change
Appropriation	\$2,395.2	\$2,429.9	\$34.7	1.5%
Revenue	\$2,395.2	\$2,429.9	\$34.7	1.5%
F.T.E. Positions*	9,316.71	9,081.22	(235.49)	(2.5%)

\*Full-time equivalent positions

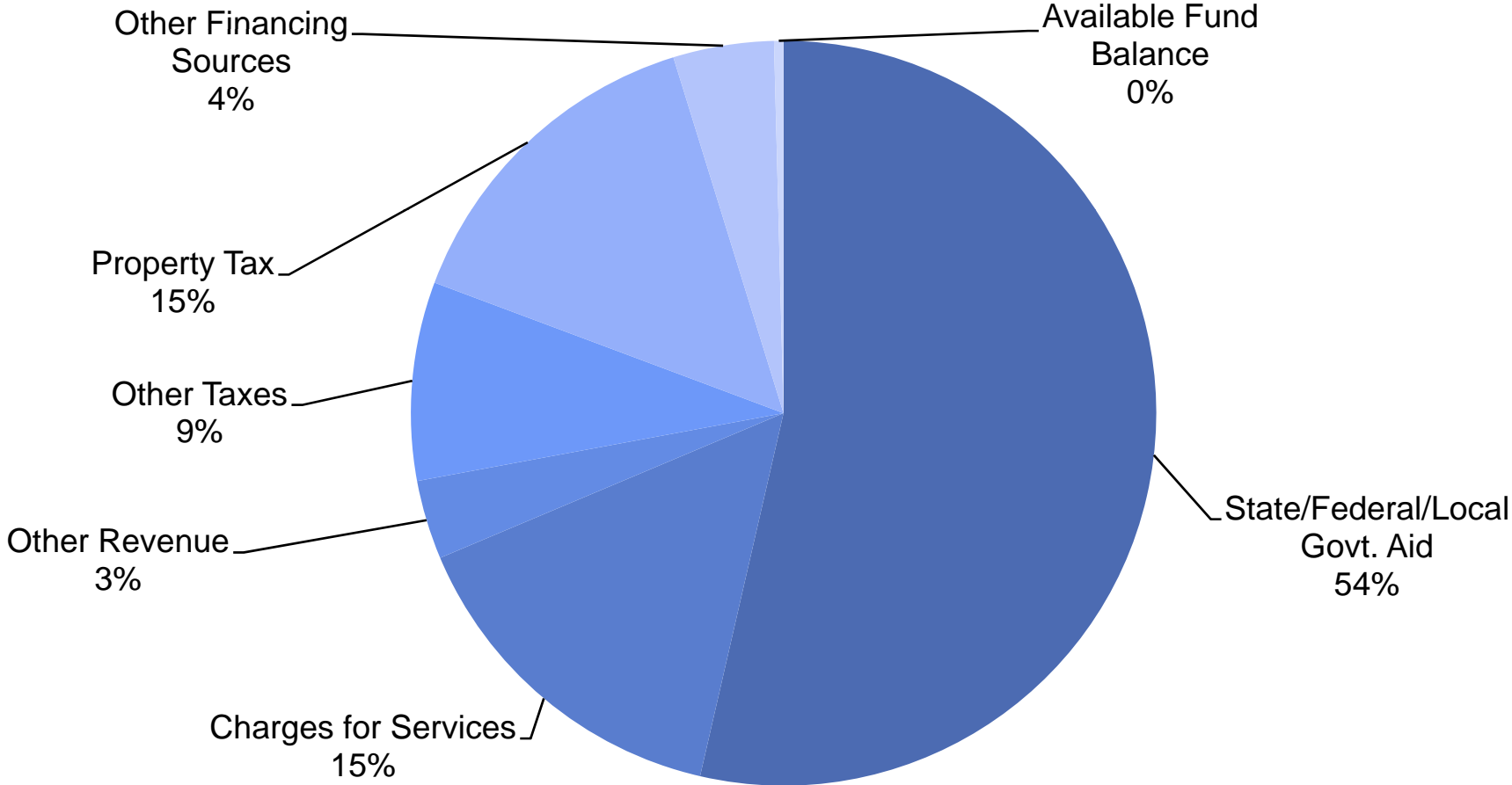


# FY 2009-10 Final Budget General/Grant/Measure A Funds Appropriation by Major Object



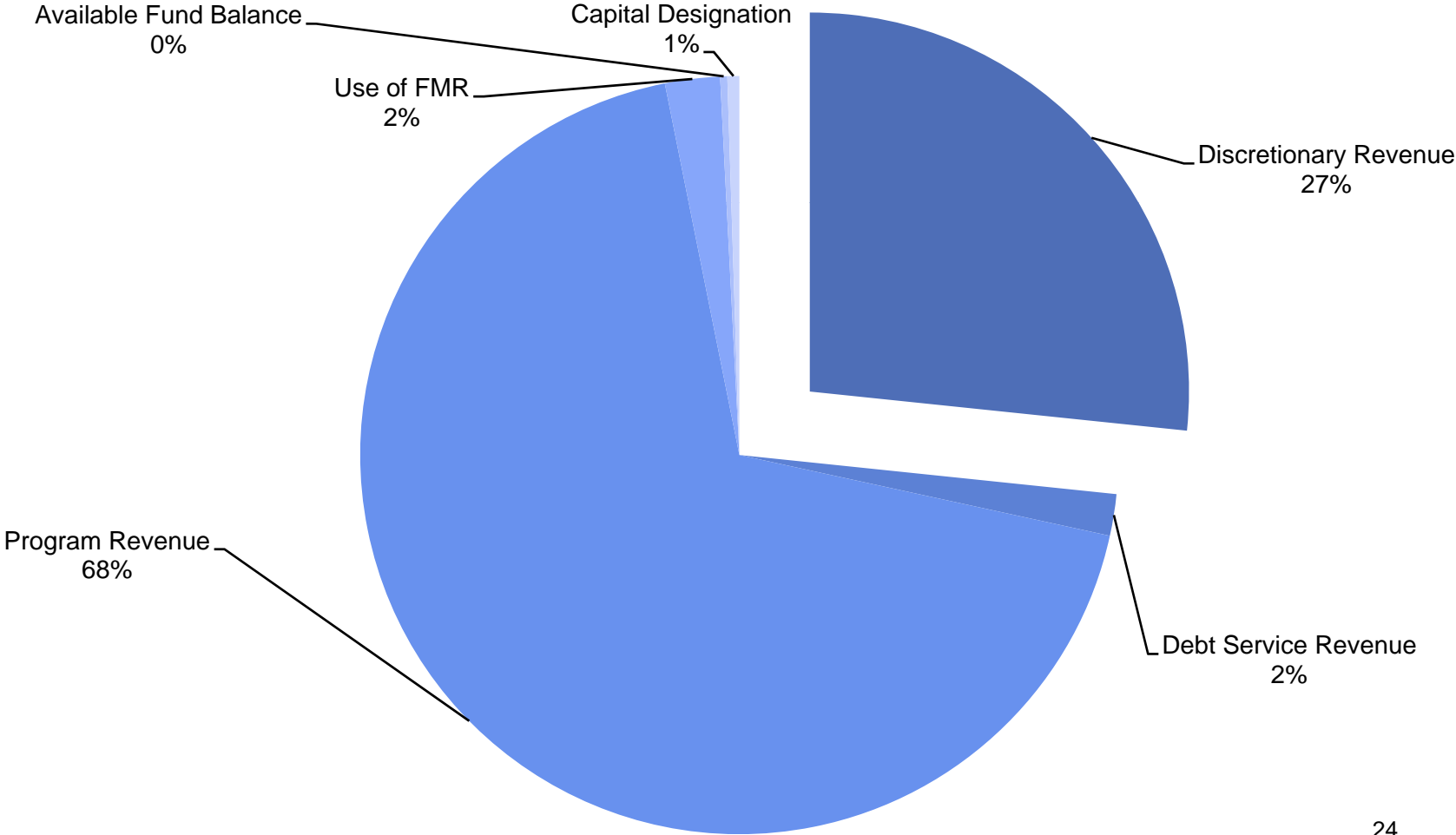


# FY 2009-10 Final Budget General/Grant/Measure A Funds Revenue by Source





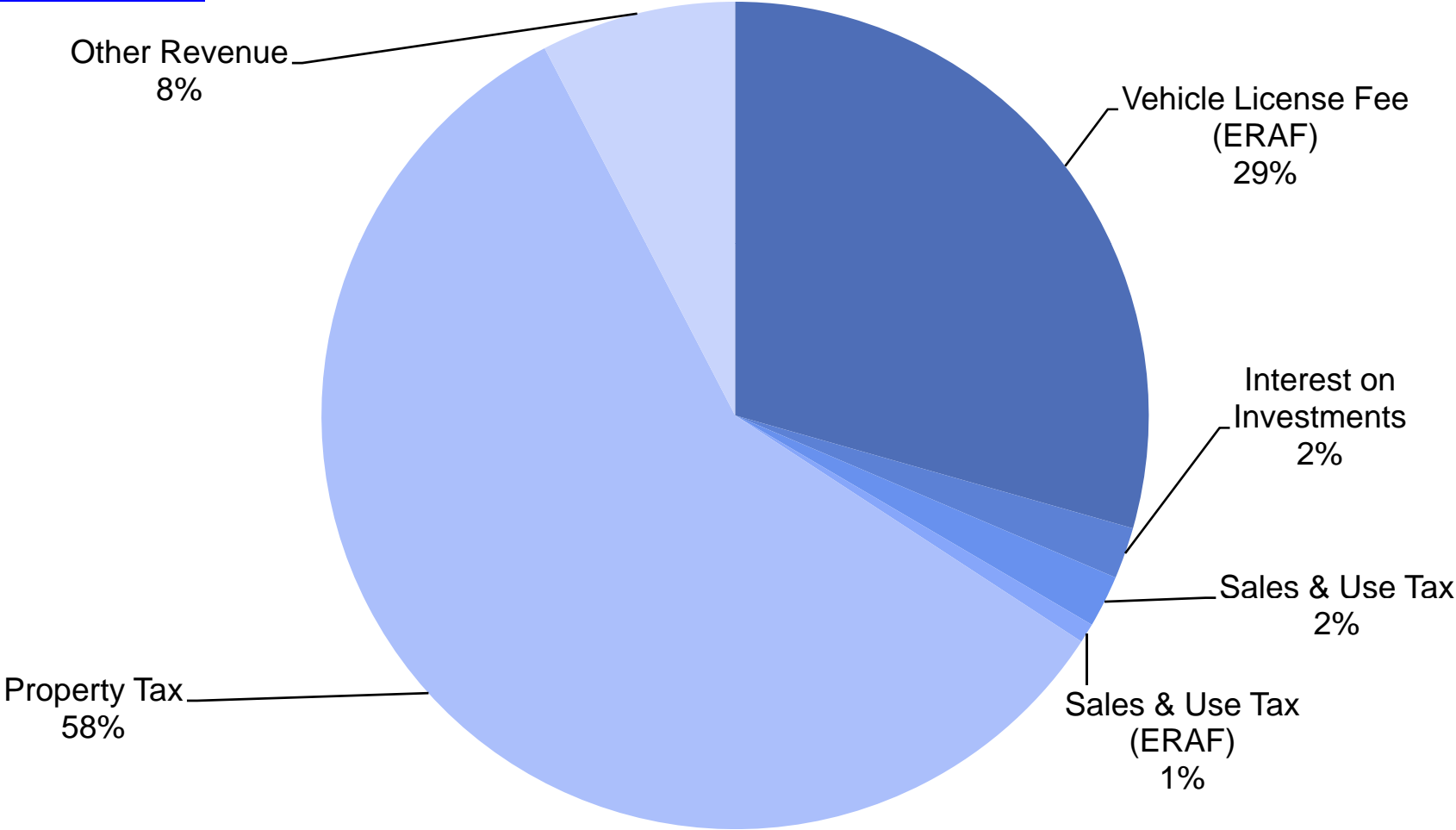
# FY 2009-10 Discretionary Revenue Share of Total General Fund



Total General Fund: \$1,960.8 million



# FY 2009-10 Discretionary Revenue by Source



Discretionary Revenue: \$522.4 million



## Closing the Gap

General/Grant/Measure A Funds (in millions)

	Net County Cost Reduction	FTE Reductions
<u>Reductions by Program:</u>		
General Government	\$28.4	45.70
Health Care Services	\$30.0	0.00
Public Assistance	\$45.0	10.00
Public Protection	\$40.0	179.58
<b>Total Programs</b>	<b>\$143.4</b>	<b>235.28</b>
Countywide Strategies	\$34.2	0.0
<b>Grand Total</b>	<b>\$177.6</b>	<b>235.28</b>



## FY 2009-10 - Closing the Gap- Impacts (partial list)

---

- ❑ Reduced wages for IHSS workers
- ❑ Time limits, reduced benefits for General Assistance recipients
- ❑ Elimination of COLAs for CBOs and ACMC
- ❑ Reduced law enforcement, Coroner, Crime Lab, emergency, jail and animal shelter services
- ❑ Reduced supervision of adults and youth on probation
- ❑ Reduced ability to represent indigent defendants, prosecute consumer and environmental crimes
- ❑ Deferral of IT, building maintenance, capital projects
- ❑ Staffing decrease of 235 FTE compared to prior year



# State Budget

---



## 2009-10 State Budget (in billions)

- FY 2009-10 budget process closed \$59.5B in funding gaps
  - Spending reductions: \$29.2
  - Temporary tax increases: \$12.5
  - Temporary stimulus funding: \$ 8.5  
(offsets some cuts)
  - Transfers/loans from local gov'ts.: \$ 3.6
  - One-time revenues/transfers: \$ 3.5
  - Use of transportation funds: \$ 1.6
  - Borrowing from special funds: \$ 0.5



# 2009-10 State Budget General Fund Spending by Program (in billions)

	Actual 2007-08	Estimated Budget 2008-09	Budget 2009-10	% Change since 2008-09	% Change since 2007-08
K-12	39.8	32.4	33.7	4.3%	-15.3%
Higher Ed	11.8	10.1	10.5	3.5%	-11.2%
Health	19.9	18.8	16.1	-14.5%	-19.2%
Social Services	9.4	10.0	8.9	-11.3%	-5.9%
Criminal Justice	13.1	12.8	9.0	-29.3%	-30.8%
All others	9.0	7.5	6.4	-14.9%	-29.0%
Totals	103.0	91.5	84.6	-7.6%	-17.9%

Source: Legislative Analyst's Office, October 2009

Wednesday, November 18, 2009

Q- KEYWORD SEARCH  **SEARCH**

## Our Region - Top Stories

Comments (34) | Recommend (4) | Print

# Years of budget deficits predicted for California

By Kevin Yamamura  
[kyamamura@sacbee.com](mailto:kyamamura@sacbee.com)

ShareThis

Buzz up!

Published: Wednesday, Nov. 18, 2009 - 10:03 am

Last Modified: Wednesday, Nov. 18, 2009 - 11:38 am

California faces annual budget deficits of \$20 billion even while assuming state employees would receive no salary increases through 2014-15, according to a forecast issued today by the nonpartisan [Legislative Analyst's Office](#).

The fiscal report also assumes that the state would not provide automatic cost-of-living adjustments to social service programs, courts and higher education -- just as the University of California system today is considering raising tuition 32 percent over the next year to compensate for [state budget cuts](#).

**SLIDE SHOW** << ● ○ >>



Hector Amezcua / [hamezcua@sacbee.com](mailto:hamezcua@sacbee.com)

Legislative Analyst Mac Taylor kicked off the budget season with his multi-year forecast Wednesday morning. He predicted California will have an annual budget deficit of more than \$20 billion.

### POPULAR COMMENT

We need more tax revenue, but not from raising tax rates, from attracting more jobs and taxpayers. 40% of Californians pay NO income taxes. We need them to pay in, or leave. We also need reduced regulation and tax rates to attract jobs. Of course, we need a much smaller government, with far fewer handouts. Let's keep



# **ALAMEDA COUNTY ECONOMIC AND BUDGET OVERVIEW**

---

By Susan S. Muranishi  
County Administrator  
November 30, 2009