

QUARANTINE PEST ALERT- RESIDENTS OF FREMONT

Following the detection of the Asian citrus psyllid at several sites in the cities of San Jose and Milpitas, a quarantine has been established in Santa Clara County as well as a portion of southern Alameda County in the City of Fremont. The quarantine area is currently bordered on west by Stevenson Blvd, then eastwardly along Automall Parkway, across I-680 to Anza Pine Trail and into the hills, then south to the Santa Clara County line.



WHAT DOES THIS MEAN?

Quarantines are established to prevent the artificial movement of pests of concern from one area to another. Pests move with their host material, which are often plants, plant



parts and/or fruit. Host material for the pest must stay within the

quarantine area, and in some cases, cannot move even within the quarantine area. This limits the risk of a pest spreading to the boundary of the quarantine area and then into a new area. Hosts for the ACP include all varieties of citrus and curry leaf plants, plants parts and fruit with leaves and stems attached.



Curry Leaf

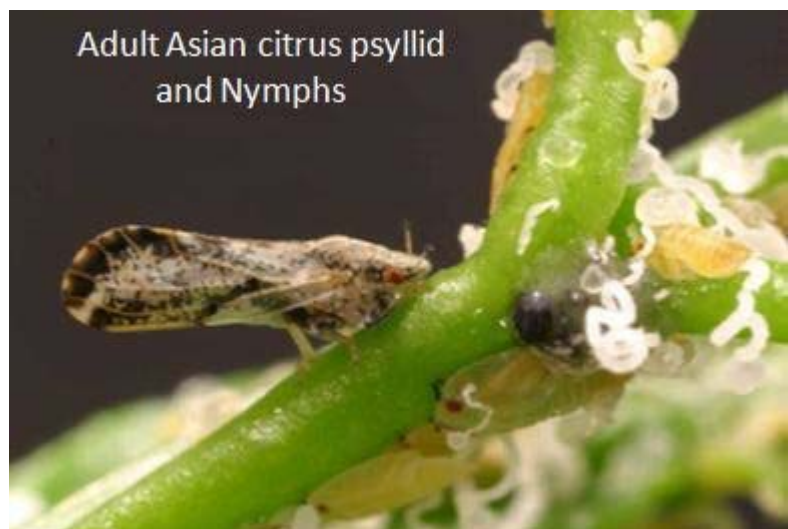
HOW DOES THIS AFFECT YOU?

If you live within the quarantine area, you cannot move any citrus or curry leaf plants, plant parts, or citrus fruit with stems and leaves attached from or within the quarantine area. This means that all of this host material must be consumed on site; greenwaste from these hosts must be placed in your greenwaste container or composted on site.



WHY IS ACP A PROBLEM?

The ACP is an invasive pest native to Asia and vectors (transmits) the disease Huanglongbing (HLB) or Citrus Greening Disease as it feeds on citrus and curry leaf trees; HLB is a virus that is always fatal to these trees and there is no cure for it. Infected trees will produce lopsided, bitter fruit and die within 3 to 6 years of becoming infected.



The presence of infected trees provides a reservoir for any ACP feeding on those trees to obtain the virus and then spread it to other uninfected trees in the area or to wherever the ACP is transported on host material that is moved from an infested area to an uninfested area.

WHAT CAN YOU DO?

Learn how to identify the life stages of ACP and how to look for it on your backyard citrus and curry leaf plants. If you suspect that you have found ACP, please contact our office at (510) 670-5232 (also a 24 hour



message line) and provide us with your address; we will collect the sample from you and have it identified. If ACP is found, California Department of Food & Agriculture staff will be able to assist you with the infestation on your property.

FOR MORE INFORMATION ABOUT ACP AND HLB, PLEASE VISIT:

<http://californiacitrusthreat.org/>