

Taskforce Kick-off Meeting – October 7, 2008

Recent Development Projects in Alameda County



Alameda County Illustrated Design Guidelines

Ashland

Sunrise Condominiums
16006 East 14th St.
Condo Conversion

SUNRISE CONDOMINIUMS

1600B

CAUTION
WALK TO POOL

Erickson
Financial
Services
San Antonio

CAUTION
LOW CLEARANCE

WARNING

THIS COMMUNITY IS
BEING MONITORED BY A
SURVEILLANCE
CAMERA

**NO
PARKING**
VEHICLES WILL
BE TOWED AWAY
AT OWNER'S
EXPENSE

**PUBLIC PARKING
PROHIBITED**
VEHICLES WILL BE
REMOVED AT THE
OWNER'S EXPENSE
**SAN LEANDRO
POLICE DEPT.**
510-577-3201

1579 165th Ave.
Condo Conversion





JULIUS MANOR

1678

2 BEDROOM CONDOMINIUMS
LEASE TO OWN
510-735-5464

Kent Gardens
16438-50 Kent Ave.
Affordable Senior Apartments









16450

NO PARKING

FIRE LANE





Liberty Pointe
Liberty and 16th St.
New Single-Family Residential



New Homes • mid \$300,000's







1570 165th St.
Condo Conversion



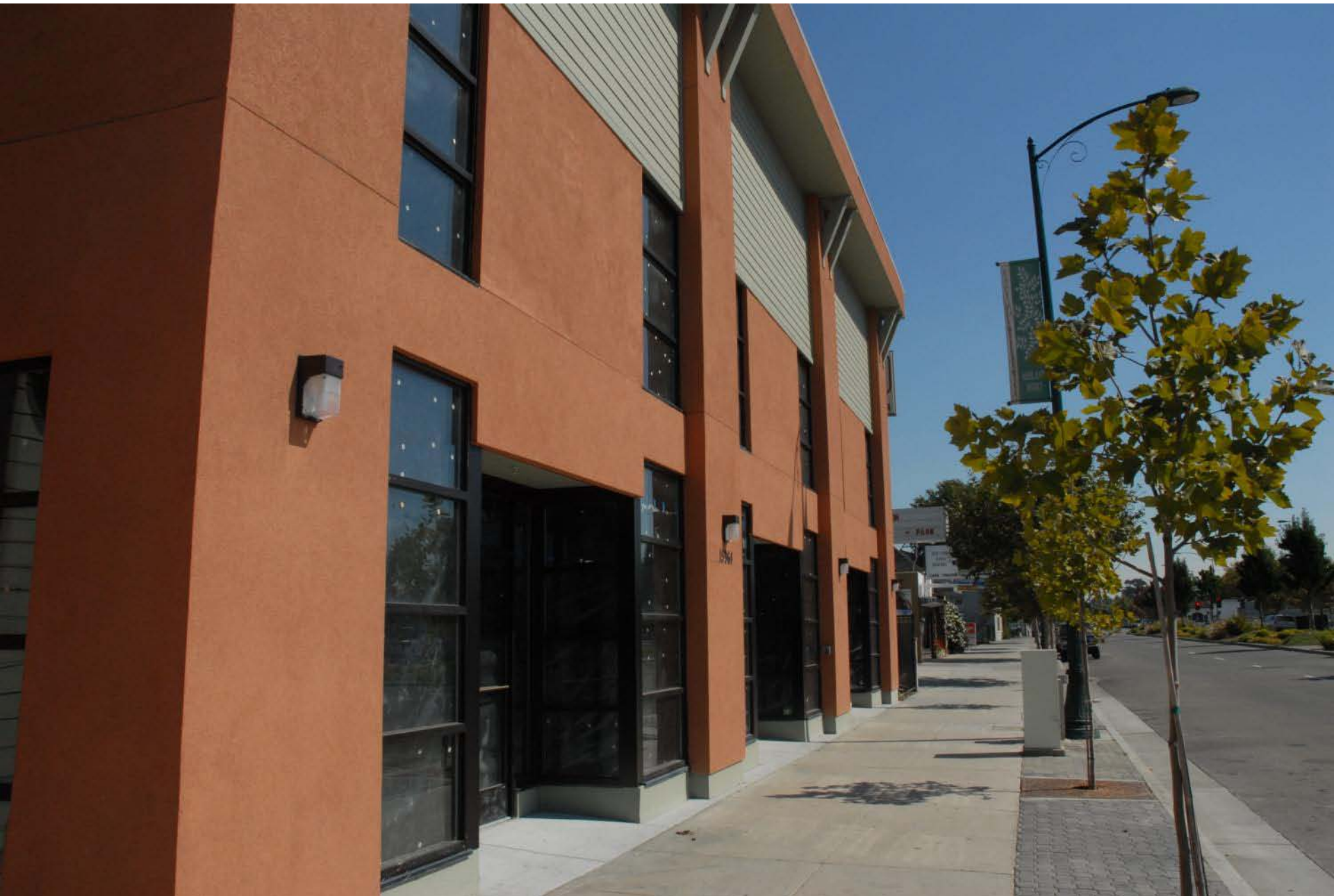


1573 165th St.





City Walk Condos
15956-64 East 14th St.
New Commercial & Single-Family
Residential









16858 Lewelling Blvd.







16945 Lewelling Blvd.



Bali Terrace
16100 Maubert Dr.
Single-Family Homes











I 676 Maubert Dr.



16085

PRIVATE PROPERTY







1154-70 Elgin St.

1154, 1158,
1162, 1166, 1170





Ashland Park
16464 Ashland Ave.
New Single-Family Residential











FIRE LANE



Castro Valley

Jenny's Café & Castro Valley Paint
2836 & 2848 Castro Valley Blvd.
Façade & Sign

JENNY'S CAFÉ

JENNY'S CAFE

BREAKFAST
LUNCH
DINNER
BEER & WINE

CASTRO VALLEY PAINT

FOR LEASE
1460 SQ./FT.
925-155-6917

Barbieri
Loss
Okui

CASTRO VALLEY
PAINT
FOR ALL YOUR PAINTING NEEDS

Barbieri
Loss
Okui

Stop being an
your energy bill.

(877) 57-EXPERT
mycarrierexpert.com

Carrier

Turn to the Experts

CBS 2052

Forest Circle Townhomes
20560 Forest Ave.
New Townhomes




Oak
Floorplan
2 Bedroom
2 1/2 Bath, Study
Approx. 1,240 Sq. Ft.


Maple
Floorplan
3 Bedroom, 3 1/2 Bath
Approx. 1,600 Sq. Ft.


Incl. Penthouse







Casa
Ramona

STOP



Omega Avenue Townhomes
20119-33 Forest Ave.
New Townhomes













Grove Way Apartments
2854 Grove Way
Townhome Style Apartment Units



MARC
CRAWFORD
for
CV School Board
CrawfordForCVSchools.com

2884





19448 Lake Chabot Rd.
Subdivision for Small Lot
Single-Family





**20700 Lake Chabot Rd.
Medical Center**

COLLIERS
INTERNATIONAL

FOR SALE
MEDICAL CONDO 1,325 SF
ALICE TENG
408-282-3808
RENE BROCHIER
925-227-6242
www.colliersparrish.com



20700

Suite 101 Lili Xu, DDS - Family Dentist

Suite 103

Suite 107 Nabil Abudayeh, MD - Cardiology/Internal Medicine
Paul J. Robinson, DO - Family Practice
Parviz Talebi, MD - Family Practice

Suite 201 Mission Hills Endodontics
William C. Cliff, DDS, MSD
G. Robert Hsu, DDS, MS

Suite 205 Min Kim, DDS, MS - Orthodontics
Shervin Yazdi, DDS - Pediatric Dentistry
Aurora Patino, DDS - Orthodontics



20700

FIRE LANE



Cherryland

185-97 Poplar Ave.



Now Renting

Marcus Plaza Townhouses

For more info, call (510) 344-0270
www.marcusplaza.com



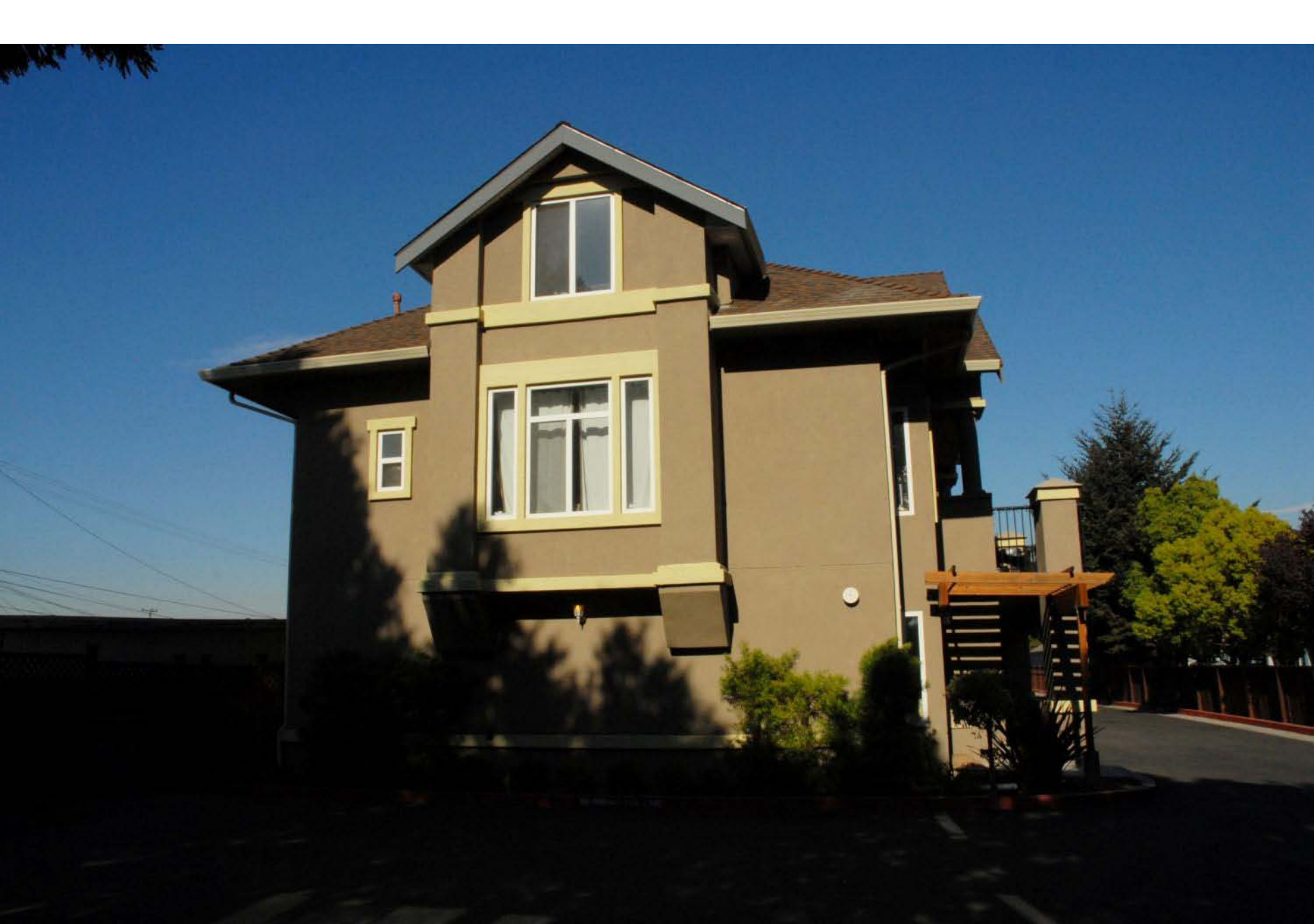


19579 Meekland Ave.







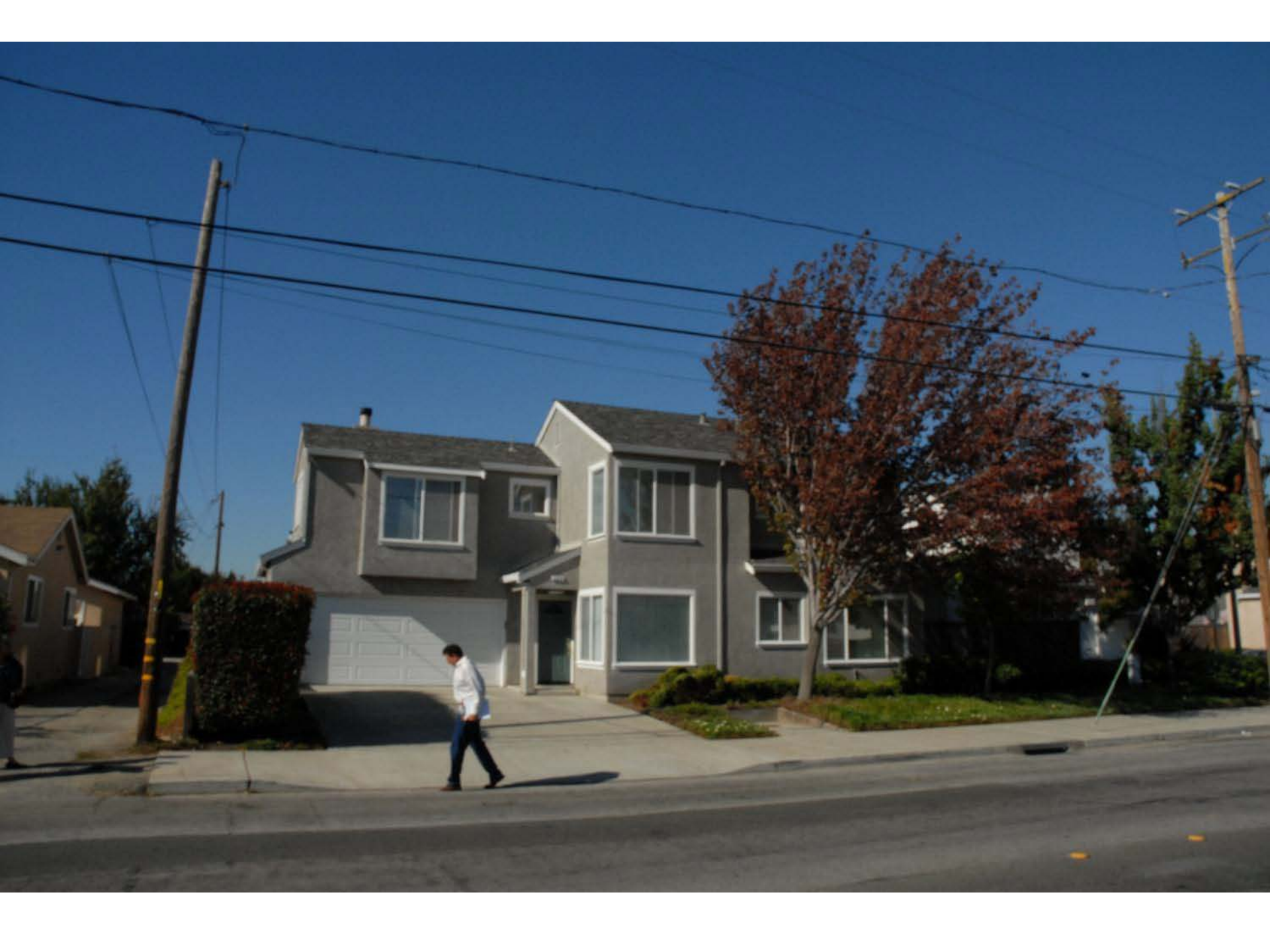


257 Laurel Ave.





Blossom Commons
378 Blossom Way
Single-Family Homes









FIRE LANE - NO PARKING



876-924 Hampton Rd.
Subdivision for Small Lot
Single-Family





20245 Concord Ave.
New Single-Family Unit on
Flag Lot



Camden Ave. & Hampton Rd. Existing Conditions





20325

P.O. BOX 11
20325
20326
20327
20328
20329





Concord Ave. Existing Conditions





Fairview

Fairview Ave. & China Ct.
New Single-Family Dwelling



1936 East Ave.
Subdivision for Small Lot
Single-Family



San Lorenzo

Village Walk
1210-94 Bockman Rd.
Neighborhood Commercial &
Townhomes







Kennedy Park Place
19833 Kennedy Park Place
New Single-Family Residential









Taskforce Kick-off Meeting – October 7, 2008

Recent Development Projects in Alameda County



Alameda County Illustrated Design Guidelines