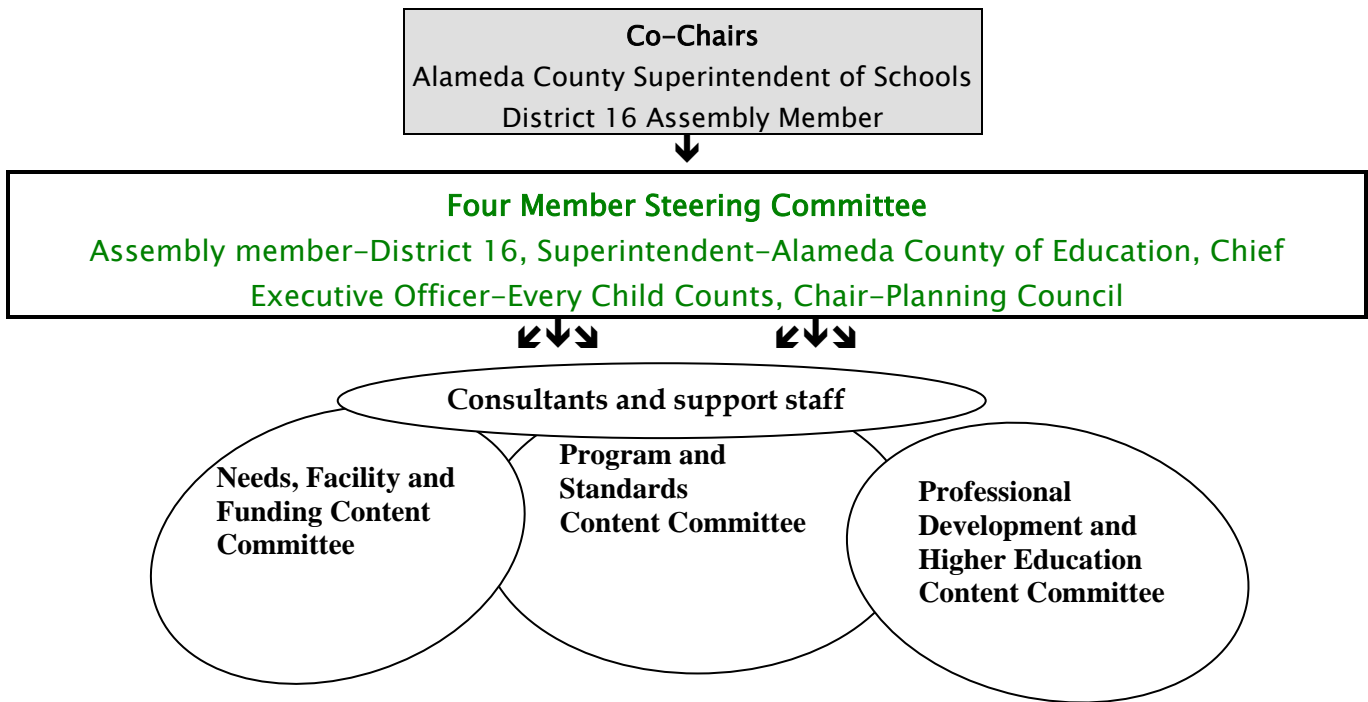


Early Care and Education (ECE) for All Planning

Organization Diagram

January – November, 2006



The Steering Committee will meet the second and fourth Friday of each month. Steering Committee, Consultants and Staff will identify Content Committee members, who can be nominated by their representative groups or as individuals with specific expertise. The Committees will have about twenty members each, excluding Steering Committee staff. The Consultants and support staff will convene the Committee meetings.

Needs, Facility and Funding Committee:

Review and guide collection of data required for the needs assessment: address and review data sources, determine additional data to be collected, review reports from staff. Topical areas include service and facility needs, demographic trends, and ECE categorical funding streams.

Program and Standards Committee:

Review and guide research on standards for infant-toddler and pre-school quality criteria: review standards for workforce, curricula, parent involvement, and leveraging of resources. Recommend goals and standards for ECE programs in Alameda County.

Professional Development and Higher Education Committee:

Review materials and assist consultants to draft policies, procedures and timeline for appropriate professional development standards, and undergraduate and graduate degree programs for Early Childcare Educators.