

FILING DEADLINE

Candidates are encouraged to apply immediately as this exam may close at any time.

THE EXAMINATION STEPS

1. Review of the application and supplemental questionnaire for minimum qualifications
2. An Oral Exam weighted at 100% of the final exam score (the oral exam may include situational exercises)

We reserve the right to make changes to the announced examination steps.

THE EXAMINATION CONTENT

The examination may include, but may not be limited to, the testing of concepts related to:

The knowledge of:

- State law applicable to the practice of forensic pathology
- Investigative procedures and the medico-legal techniques required to determine the circumstances, cause and manner of death as required by law
- Procedures and techniques utilized in forensic medicine, including medico-legal autopsy, interpretation of forensic toxicology results and interpretation of histology and clinical chemistry results associated with a cause and time of death
- Principles of public administration, supervision, and training

And the ability to:

- Examine decedents for evidence and signs of injuries
- Document injuries, collect biological and physical evidence of injuries and interpret them
- Perform medico-legal autopsies in accordance with the standards of the Alameda County Coroner's Bureau and the National Association of Medical Examiners
- Effectively communicate interpretations of scene reconstruction, medico-legal autopsy, investigative and observational findings verbally and in writing
- Testify clearly, concisely and effectively at public hearings, in courts of law and before the Grand Jury
- Earn, and effectively execute, the policies and procedures of the Alameda County Coroner's Bureau
- Establish and maintain effective and diplomatic work relationships with members of the legal profession, public, staff, and other government agencies
- Communicate effectively, both orally and in writing

THE SUPPLEMENTAL QUESTIONNAIRE

A properly completed Supplemental Questionnaire must be submitted with each application. Applications and Supplemental Questionnaires must be in the possession of the Human Resource Services Department by 5:00 p.m. on the Last Day for Filing. **Postmarks and faxes are not accepted.** Failure to submit the Supplemental Questionnaire will result in disqualification.

Applicants are encouraged to apply on-line at:
www.acgov.org

PLEASE TYPE OR PRINT YOUR RESPONSES. Use 8-1/2" x 11" paper and put your name at the top of each page.

1. Do you possess an M.D. or O.D. degree conferred by an accredited medical school (information concerning the acceptability of degrees can be found in the brochure "Educational Requirements" which is available on the Alameda County employment web site and at the Human Resource Services office)?
Yes or No
2. If yes, please provide the name of the school and it's address where your M.D. or O.D. degree was obtained and the time period when you were enrolled (you may be required to provide transcripts prior to an offer of employment).
3. Have you completed a recognized residency program leading to board certification in forensic pathology and possession of board certification in forensic pathology, or board eligibility in the specialty of forensic pathology as determined by the American Board of Pathology?
Yes or No
4. Do you possess a license to practice medicine in the State of California?
Yes or No
5. If yes, what is the license number?



Human Resource Services

ADDITIONAL INFORMATION

Should you have questions regarding this position feel free to contact:

David Sides

Human Resources Analyst II

dsides@acgov.org

510-272-6468



The County of Alameda is seeking a

Chief Forensic Pathologist

acgov.org



THE COMMUNITY OF ALAMEDA COUNTY

Alameda County, California's seventh-largest county, is located on the east side of world-renowned San Francisco Bay. 1.5 million people live in 14 incorporated cities that include Alameda, Albany, Berkeley, Dublin, Emeryville, Fremont, Hayward, Livermore, Newark, Oakland, Piedmont, Pleasanton, San Leandro, and Union City, as well as unincorporated communities and rural areas that comprise the 813 square miles of the County. Primary unincorporated areas include Ashland, Castro Valley, Cherryland, San Lorenzo, Fairview and Sunol. Oakland, the County seat, is California's eighth largest city.

Alameda County is a blend of culturally and ethnically diverse communities. Its mixture of cosmopolitan and suburban communities provides the perfect environment for raising a family. The County offers a lifestyle unique to one of the nation's most popular regions. Outdoor enthusiasts will find countless recreational opportunities in the acres of wildlife refuges, numerous parks, lakes and marinas.

The County has one of the finest educational systems, offering businesses, individuals, and families the broadest possible selection of public and private learning and research facilities. Educational institutions in the region include the University of California at Berkeley, California State University, East Bay, and numerous other community and private colleges.

Alameda County is proud of its extensive cultural resources. The Oakland Museum offers lessons in the rich history of California's people, places and events. Chabot Space & Science Center is an innovative, state-of-the-art science and technology education facility. Berkeley's Cal Performances, the Oakland East Bay Symphony and the Fremont Symphony offer a complete season of live musical performances. The East Bay also serves as home to three major professional sports franchises. The Oakland A's baseball team and Oakland Raiders football team play their games at the Oakland-Alameda County Coliseum, while the Golden State Warriors basketball team entertains fans at the Oracle Arena.



THE SHERIFF'S OFFICE

The Alameda County Sheriff's Office is a full service law enforcement agency accredited through the Commission on Accreditation for Law Enforcement Agencies (CALEA) and the American Correctional Association (ACA). Additionally, the agency's health care provider, Prison Health Services, has dual accreditation through the National Commission on Correctional Health Care (NCCHC) and the California Medical Association (CMA). Together these form what is referred to as the "Triple Crown" of accreditation (ACA, NCCHC/CMA and CALEA) awarded by the National Sheriff's Association. Additionally, the Sheriff's Office Crime Lab is nationally accredited by the American Society of Crime Laboratory Directors (ASCLD).

The Sheriff's Office Explosive Ordinance Disposal Unit has also been awarded national accreditation through the Bomb Squad Commanders Advisory Board.

CORONER'S BUREAU

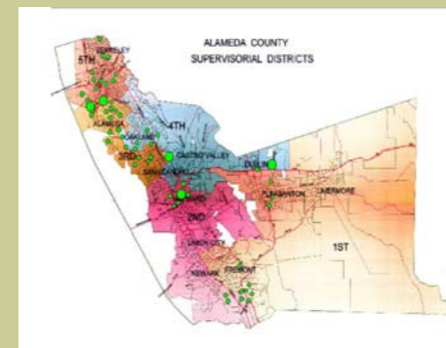
The mission of the Alameda County Sheriff's Office Coroner's Bureau is to serve and protect the interests of the community by determining the cause, circumstances and manner of sudden or unexplained deaths, and by identifying deceased persons and notifying their next of kin, regardless of where they may live in the world, while ensuring the deceased and their property are treated with the utmost respect and dignity. We accomplish our mission through the use of peace officer investigators, forensically trained pathologists and consultants, and other scientific methods of inquiry. We serve as an independent finder of fact in our search for the truth. The Coroner's investigation and conclusions strive to provide a balance to the scales of justice and seek resolution to medical mysteries.

THE POSITION OF CHIEF FORENSIC PATHOLOGIST



This is a single position class located in the Coroner's Bureau, reporting to the Coroner's Bureau commanding officer. In addition to performing the duties of a forensic pathologist, the incumbent is responsible for the coordination of medical forensic activities conducted by other forensic pathologists.

The Chief Forensic Pathologist will perform professional level, forensic medical evaluation and analysis involved with determining the cause, manner and circumstances of death and injuries sustained by deceased persons; develop forensic evidence for use in legal proceedings; testify and serve as an expert witness in court concerning findings; coordinate the work of forensic pathologists and other staff.



COMPENSATION AND BENEFITS

The base annual salary range for the Chief Forensic Pathologist is from **\$168,521.64 - \$236,745.60 annually**. The County also offers an attractive management benefits program with the following elements:

- Retirement Plan covered by the 1937 Act
- Management Benefits Cafeteria Plan
- Health and Dental Insurance
- Life/Accident Insurance
- Paid Vacation & Sick Leave
- Management Leave (up to 7 days annually)
- Holidays (11 paid holidays; 4 floating holidays)
- Dependent Care Salary Contribution Plan
- Deferred Compensation Plan

MINIMUM REQUIREMENTS

EDUCATION: Possession of an M.D. or O.D. degree conferred by an accredited medical school (information concerning the acceptability of degrees can be found in the brochure "Educational Requirements" which is available on the Alameda County employment web site and at the Human Resource Services office); **AND**

CERTIFICATION: Completion of a recognized residency program leading to board certification in forensic pathology and possession of board certification in forensic pathology, or board eligibility in the specialty of forensic pathology as determined by the American Board of Pathology; **AND**

LICENSE: Possession of a license to practice medicine in the State of California.

SPECIAL REQUIREMENTS:

- Duties may require twenty-four hour on-call availability to respond to scenes of sudden death or injury, or to respond to hospitals to facilitate organ donor requests.
- Duties may require exposure to accidental, physical or biological health hazards and disagreeable situations.

THE IDEAL CANDIDATE

The ideal candidate for this position will have a proven background in forensic pathology, and demonstrated experience in providing expert testimony in a court of law. The ability to create and lead teams, organize and prioritize the work of others, and build collaborative relationships are key ingredients for a successful candidate. In addition, the Chief Forensic Pathologist will have strong analytical, written and oral communication skills; and understands the importance of fostering a commitment to the County and the Sheriff's Office's mission, values and goals.