

ALAMEDA COUNTY

THE SUNNY SIDE OF THE BAY

Resource Directory



January 2012



acgov.org

Alameda County's Official Website

Go online to www.acgov.org to find a comprehensive list of County Departments' listings, services offered, opportunities for online payments and downloading of forms. See our most popular links and get information in different languages by clicking on the Translate Site.

Cover Design Artist: Kathy Graddy, 2004

Original artwork commissioned by the County of Alameda for placement in the State Building in Sacramento, CA and the County Administration Building in Oakland, CA.

Published by GSA Communications/Printing Services, 2012

Editors: R. Arevalo, M. Celoni, B. Hedani-Morishita

Graphic Assistance: Virginia Hazlewood

For changes and questions: (510) 208-9755 or e-mail acdirectory@acgov.org

Table of Contents

Welcome to Alameda County	4
Board of Supervisors	5
Emergencies	6
Assistance/Crisis Lines	6
Informational 24/7 Help Lines	7
Adopting a Child/Becoming a Foster Parent	8
Alcohol and Drug Services	8
Animal Control	8
Building Concerns	8
Child Care	9
Child Support Services	9
Commissions	9
Community-Based Organizations	10
Coroner	10
Doing Business in Alameda County	10
Domestic Violence Prevention and Support	10
Environmental Concerns	11
Finding Employment	11
Fire Department	11
Health Care Services	12
Law Enforcement	13-14
Legal Services	14
Libraries, County	15
Payment of County & Court Obligations	16
Property Assessment	16
Public Assistance.....	16-17
Public Works	17
Purchasing	18
Reporting Violence, Abuse or Neglect	18
Schools, County	18
Senior/Disabled Services	18
Sexual Assault, Child Abuse, Sexual Exploitation of Minors	19
Superior Courts of California	20
Veterans' Services	21
Victim-Witness Assistance	21
Vital/Official Public Records	21
Voting	22
Youth Services	22
Zone 7 Water Agency	22
Appendix: Listing of County Agencies/Departments	23
Alameda County Government Overview	24
Notes	25-26

Welcome to Alameda County

One of 58 counties in California, Alameda County is home to over 1.5 million people living in 14 incorporated cities as well as in six unincorporated communities and rural areas throughout the 813 square miles of the County.



ALAMEDA COUNTY provides health care, social services, public protection, and general government programs for a population that is culturally and ethnically diverse. County services are provided to the citizens by about 9,000 employees working in 21 different agencies and departments.

Fifteen cents of every dollar you pay in property tax supports the vital services **Alameda County** provides to the people who live, work, and play here. And for every taxpayer dollar, the County receives nine dollars from other sources such as the state and federal governments to pay for mandated programs.

Altogether, the County spends, under the guidance of the Board of Supervisors, \$2.5 billion annually to assist vulnerable residents, enforce the law, ensure justice, protect public health, and improve our quality of life.

Susan S. Muranishi
County Administrator

CITIES OF ALAMEDA COUNTY

Incorporated: Alameda, Albany, Berkeley, Dublin, Emeryville, Fremont, Hayward, Livermore, Newark, Oakland, Piedmont, Pleasanton, San Leandro, and Union City.

Unincorporated: Ashland, Castro Valley, Cherryland, Fairview, San Lorenzo, and Sunol.

Alameda County Board of Supervisors

Alameda County is governed by a five-member Board of Supervisors directly elected by voters in their respective districts. The Board sets policies, oversees all County operations, and approves the County's annual budget.

Address: **County of Alameda**
Administration Building
1221 Oak St., Suite 536
Oakland, CA 94612

DISTRICT 1 **Scott Haggerty** (510) 272-6691
Dublin and Livermore; most of the city of Fremont; a portion of the unincorporated community of Sunol; and most of the unincorporated area of the Livermore Amador Valley
Email: district1@acgov.org Fax (510) 208-3910
District Office (925) 551-6995
4501 Pleasanton Ave., Pleasanton, CA 94566 Fax (925) 484-2809

DISTRICT 2 **Richard Valle**(510) 272-6692
Hayward, Newark and Union City; the northern portion of the city of Fremont; and the portion of the unincorporated community of Sunol north of Highway 84
Email: district2@acgov.org Fax (510) 271-5115
District Office (510) 259-1097
24301 Southland Drive, Suite 101, Hayward, CA 94545 Fax (510) 259-0860

DISTRICT 3 **Wilma Chan**(510) 272-6693
Alameda and San Leandro; a portion of the city of Oakland, including the Chinatown, San Antonio, a portion of the Fruitvale neighborhood and Melrose areas; the unincorporated communities of San Lorenzo and Hayward Acres; and a portion of the unincorporated community of Ashland
Email: district3@acgov.org Fax (510) 268-8004
District Office (510) 278-0367
15903 Hesperian Blvd., San Lorenzo, CA 94580 Fax (510) 278-0467

DISTRICT 4 **Nate Miley** (510) 272-6694
Pleasanton, including the adjacent unincorporated Castlewood and Happy Valley areas; the Lower Hills, South Hills and Elmhurst areas of Oakland; the unincorporated communities of Castro Valley, Cherryland, and Fairview; and most of the unincorporated community of Ashland
Email: district4@acgov.org Fax (510) 465-7628
District Office (510) 670-5717
20993 Redwood Rd., Castro Valley, CA 94546 Fax (510) 537-7289
District Office (925) 803-7959
4501 Pleasanton Avenue, 2nd Floor, Pleasanton, CA 94566

DISTRICT 5 **Keith Carson** (510) 272-6695
Albany, Berkeley, Emeryville, Piedmont, and West Oakland, North Oakland, Rockridge, Grand Lake, and portions of the Fruitvale, Manzanita and Dimond District neighborhoods
Email: dist5@acgov.org Fax (510) 271-5151



EMERGENCIES

For life-threatening emergencies
(including Fire & Paramedic)



ASSISTANCE/CRISIS LINES

Suicide Crisis Hotline (800) 309-2131

Child Abuse Hotline (510) 259-1800

Elder Abuse Hotline (510) 577-3500

Mental Health and Alcohol and Drug Referral
Services

(800) 491-9099

ACCESS (Acute Crisis Care & Evaluation for System-wide Services)

A program of Alameda County Health Care Services Agency

Alameda County Family Justice Center (510) 267-8800

Eden I &R, Inc. (510) 537-2710

www.edenir.org

- Assistance in locating vital social services in your neighborhood
- Shelter list for Alameda County
- Affordable and subsidized housing in Alameda County
- Community Housing and Information Network CHAIN Line

(510) 537-2552

- Online Service Database finder

www.alamedaco.info

Click on Resource Finder and enter type of service you are seeking (e.g., youth counseling, tutoring, prevention, etc.).

INFORMATIONAL 24/7 HELP LINES



2-1-1 is a free, non-emergency, confidential, 3-digit phone number and service that provides easy access to housing information, and critical health and human services.

2-1-1 operates 24 hours a day, 7 days a week with multi-lingual capabilities. If you are outside Alameda County, call (888) 886-9660.



On the phone. 511

On the web. 511.org

On your way.

511 is a free phone and Web service that consolidates Bay Area transportation information into a one-stop resource. 511 provides up-to-the-minute information on traffic conditions, incidents and driving times, schedule, route and fare information for the Bay Area's public transportation services, instant carpool and vanpool referrals, bicycling information and more. It is available 24 hours a day, 7 days a week.

www.511.org

Alameda County Resources

ADOPTING A CHILD OR BECOMING A FOSTER PARENT

Prospective Foster & Adoptive Parents Hotline (510) 259-3575
Children & Family Services, *Social Services Agency*

ALCOHOL AND DRUG SERVICES

Department of Behavioral Health Care Services-ACCESS (800) 491-9099
Information on recovery and treatment programs

ANIMAL CONTROL

Animal Control Shelter, *Sheriff's Office*
San Leandro (510) 667-7707
Dublin (925) 803-7040

BUILDING CONCERNS

Community Development Agency (510) 670-5333
224 W. Winton Ave., Hayward, CA 94544
Minor Home Repair and Housing Rehabilitation (510) 670-5398
(Not available in all areas of Alameda County) or (510) 670-5399
Facade Improvement Program (510) 670-5333
(Ashland, Cherryland, Castro Valley, San Lorenzo)
Code Enforcement/Graffiti Abatement (510) 670-6522
First-Time Homebuyer Program (510) 670-5246
Lead Poisoning Prevention Program (510) 567-8280
2000 Embarcadero, Suite 300, Oakland, CA 94606 Fax (510) 567-8272

Public Works Agency (510) 670-5480
399 Elmhurst St., Hayward, CA 94544
(serving unincorporated areas of Alameda County)
Building Inspection and Permits (510) 670-5440
Graffiti and Shopping Cart Abatement (510) 670-5500
Street Lights (510) 670-5518

Alameda County Resources

CHILD CARE

Child Care Referral Services

- North County BANANAS Inc. (510) 658-7353
<http://www.bananasinc.org/index.php>
- South County Alameda County 4C's (510) 582-2189
<http://www.4c-alameda.org/en/index.php>
- East County Child Care Links (925) 417-8733
<http://www.childcarelinks.org>

Alameda County Child Care Planning Council (510) 208-9620

1401 Lakeside Dr., 11th Floor, Oakland, CA 94612 Fax (510) 208-9579

The Council advises and makes recommendations to policymakers to ensure that all children and families have access to quality child care that educates children and enriches their lives.

CHILD SUPPORT SERVICES

Department of Child Support Services (866) 901-3212

5669 Gibraltar Dr., Pleasanton, CA 94588 Fax (925) 468-9297

The Department establishes paternity and child support orders, collects child, medical, and spousal support payments, modifies orders and provides medical enforcement services.

COMMISSIONS

For a complete listing of County Boards/Commissions, please visit County website:

http://www.acgov.org/alco_app/clerk/boards_com.jsp?type=R

Alameda County Arts Commission (510) 208-9646

P.O. Box 29004, Oakland, CA 94604 Fax (510) 271-5192

<http://www.acgov.org/arts>

Alameda County Planning Commission (510) 670-5400

224 W. Winton Ave., Room 111, Hayward, CA 94544 Fax (510) 785-8793

Alameda Local Agency Formation Commission (LAFCo) (510) 271-5142

1221 Oak St., Room 555, Oakland, CA 94612 Fax (510) 272-3784

Oversees local government boundary changes, conducts special studies on governmental structure, and determines the spheres of influence for each city and special district within the County.

Boards of Zoning Adjustments (*East and West County*) (510) 670-5400

..... Fax (510) 259-3880

Commission on the Status of Women (510) 259-3871

24100 Amador St., 6th Floor, Hayward, CA 94544 Fax (510) 259-3880

Consumer Affairs Commission (510) 208-9672

1221 Oak St., Suite 536, Oakland, CA 94612

Alameda County Resources

COMMUNITY-BASED ORGANIZATION (County Partnership)

Eden I &R, Inc. (510) 537-2710
www.edenir.org

For more information, please see page 6.

CORONER

Coroner's Bureau, *Sheriff's Office* (510) 268-7300
480 4th St., Oakland, CA 94607

DOING BUSINESS IN ALAMEDA COUNTY

Auditor Controller Agency - Office of Contract Compliance (510) 891-5500
1221 Oak St., Room 249, Oakland, CA 94612

Clerk-Recorder's Office (510) 272-6362
1106 Madison St., Oakland, CA 94607

Filing of Fictitious Business Name, Notary oath and bond, and process server registration and bond.

Community Development Agency

Planning Department (510) 670-5400

Redevelopment Agency (510) 670-5333

General Services Agency - Business Outreach (510) 208-9625

Office of Acquisition Policy Fax (510) 208-9711

1401 Lakeside Dr., Oakland, CA 94612

Health Care Services Agency - Environmental Health

Alameda County Green Business Program (510) 567-6770

1131 Harbor Bay Parkway, Alameda, CA 94502

www.greenbusinessca.org

Public Works Agency (510) 670-5993

Community and Business Outreach

DOMESTIC VIOLENCE PREVENTION AND SUPPORT

Alameda County Family Justice Center (510) 267-8800
470 27th St., Oakland, CA 94612

A one-stop center for families experiencing domestic violence, sexual assault, child abuse, elder abuse, and access to services countywide.

Alameda County Medical Center (510) 437-4949

Highland Domestic Violence Program or (510) 437-4688

Provides support for victims of domestic violence and sexual assault.

National Domestic Violence Hotline (800) 799-SAFE

Alameda County Resources

ENVIRONMENTAL CONCERNS

Alameda County Recycling Hotline	(877) STOPWASTE
www.stopwaste.org	(877-786-7927)
Clean Water Program	(510) 670-5543
399 Elmhurst St., Hayward, CA 94544	
East County Animal Shelter	(925) 803-7040
4595 Gleason Dr., Dublin, CA 94568	
Environmental Health	(510) 567-6700
1131 Harbor Bay Pkwy, Alameda, CA 94502	
<i>Services include inspections/safety issues for restaurants, food vehicles & markets, pools & spas, hazardous material/waste sites, including spills & leaks, well water quality, septic systems, medical waste, tattoo & body piercing businesses, beaches in County & Green Business Program.</i>	
Household Hazardous Waste	(510) 670-6460
Toll-Free	(800) 606-6606
Collection Sites: <i>(Free drop-off for paint, cleansers, solvents, batteries)</i>	
2091 W. Winton Ave., Hayward, CA 94544	
2100 E. 7 th St., Oakland, CA	
5584 La Ribera St., Livermore, CA 94550	
Lead Poisoning Prevention Program	(510) 567-8280
2000 Embarcadero, Ste. 300, Oakland, CA 94606	Fax (510) 567-8272
Tree Permit/Urban Forestry Program	(510) 670-6467
Vector Control Services Hotline	(800) 832-8678
1131 Harbor Bay Parkway, Alameda, CA 94502	(510) 567-6800
<i>Services include insect, rodent, refuse, and other animal vector.....</i>	<i>Fax (510) 337-9137</i>
<i>problems.</i>	
Well Standards Program	(510) 670-6633

FINDING EMPLOYMENT

Human Resource Services	(510) 272-6471
1405 Lakeside Dr., Oakland, CA 94612	Fax (510) 272-6424
Job Hotline – Working for Alameda County	(510) 272-6433
Job Hotline – Superior Courts	(510) 891-6020

FIRE DEPARTMENT

Alameda County Fire Department	(510) 618-3490
--------------------------------------	----------------

The ALAMEDA COUNTY FIRE DEPARTMENT is a Consolidated Department serving the unincorporated areas of Alameda County, the cities of San Leandro, Dublin, Newark, Union City, and the Lawrence Berkeley National Laboratory and the Lawrence Livermore National Laboratory, with a total of 28 fire stations. Services include fire suppression, arson investigation, hazardous materials mitigation, paramedic services, urban search and rescue, fire prevention and public education.

Alameda County Resources

HEALTH CARE SERVICES

Alameda County Medical Center

Highland Hospital and Clinics	(510) 437-4800
1411 East 31 st St., Oakland, CA 94602	
Appointments	(510) 437-8500
Fairmont Hospital and HIV Clinic	(510) 895-4200
15400 Foothill Blvd., San Leandro, CA 94578	
HIV Clinic	(510) 895-4353
John George Psychiatric Pavilion	(510) 346-1300
2060 Fairmont Dr., San Leandro, CA 94578	
Patient Information	(510) 346-7500
Eastmont Wellness Center	(510) 567-5700
6955 Foothill Blvd., Ste. 200, Oakland, CA 94605	
Winton Wellness Center	(510) 266-1700
24100 Amador St., Ste. 250, Hayward, CA 94544	
Newark Health Center	(510) 505-1600
6066 Civic Terrace Ave., Newark, CA 94560	

Health Care Services Agency

Health Insurance Application Desk	(800) 422-9495
---	----------------

Alameda County Behavioral Health Care Services	(510) 567-8100
--	----------------

Administration

2000 Embarcadero Cove, Room 400, Oakland, CA 94606

Providing mental health and substance abuse services for the people of Alameda County.

Mental Health and Alcohol and Drug Services

ACCESS (Acute Crisis Care & Evaluation for System-Wide Services)	(800) 491-9099
--	----------------

Information, assessment and referral for recovery and treatment programs.

Alameda County Public Health	(510) 267-8000
------------------------------------	----------------

Public Health Department Clearinghouse	(888) 604-INFO
--	----------------

Toll-Free

(4636)

Referrals for health-related services, including doctors, dentists, clinics, prenatal care, immunizations, TB tests, and health care options.

California Children Services	(510) 208-5970
------------------------------------	----------------

HIV-AIDS Testing	(510) 268-7630
------------------------	----------------

Immunizations (Flu, Childhood, Travel)	(510) 267-3230
--	----------------

Health Care for the Homeless	(510) 532-1930
------------------------------------	----------------

Vital Registration (home births; death certificates for morticians)	(510) 267-8070
---	----------------

Alameda County Resources

LAW ENFORCEMENT

District Attorney's Office	(510) 272-6222
1225 Fallon St., Room 900, Oakland, CA 94612	
Consumer and Environmental Protection	(510) 569-9281
7677 Oakport St., Suite 650, Oakland, CA 94621	Fax (510) 569-0505
Victim-Witness Assistance	(510) 272-6180
1401 Lakeside Dr., Suite 802, Oakland, CA 94612	Fax (510) 208-9565
Probation Department	(510) 268-7245
400 Broadway, Oakland, CA 94607	
Adult Information Services	(510) 268-7050
Adult Services	(510) 268-2703
Juvenile Information Services	(510) 667-4488
Juvenile Services	(510) 268-7200
Juvenile Facilities	(510) 667-4994
Juvenile Hall Intake	
Detention Facility 24 Hours	(510) 667-7450
Camp Wilmont Sweeney	(510) 667-7474
Alameda County Juvenile Justice Center	(510) 667-4970
2500 Fairmont Dr., San Leandro, CA 94578	
Sheriff's Office	
Anonymous Tip Hotline	(510) 667-3622
Administration Office	(510) 272-6878
1401 Lakeside Dr., 12 th Floor, Oakland, CA 94612	
A.C. Transit Police Services	(510) 268-7905
Airport Police Services	(510) 563-2940
CCW (Concealed Carry Weapons) Licenses - for Civilians	(510) 208-9890
Civil Unit	(510) 272-6910
Crime Lab	(510) 667-7700
Coroner's Bureau	(510) 268-7300
Dublin Police Services	(925) 833-6670
100 Civic Plaza, Dublin, CA 94568	
East County Animal Shelter	(925) 803-7040
Eden Township Substation	(510) 667-7721
15001 Foothill Blvd., San Leandro, CA 94578	
Emergency Services Dispatch	(510) 667-7721
2000 150 th Ave., San Leandro, CA 94578	

Alameda County Resources

LAW ENFORCEMENT *(Continued)*

Sheriff's Office *(Continued)*

Glenn E. Dyer Detention Facility	(510) 268-7777
550 6 th St., Oakland, CA 94607	
Internal Affairs	(510) 208-9800
Marshal's Office	
Alameda	(510) 268-2974
Berkeley	(510) 848-1178
Fremont	(510) 795-2590
Hayward	(510) 670-5048
Juvenile Justice Center	(510) 618-3381
Livermore/Pleasanton	(925) 551-6858
Oakland	(510) 268-2955
Marine Patrol Unit	(510) 563-3655
8980 Earhart Rd., Oakland, CA 94603	
Office of Homeland Security and Emergency Services	(925) 803-7800
<i>Business hours: 8:00 am to 5:00 pm, M-F (An OES Coordinator, and on call OES personnel are available twenty-four hours a day, seven days a week.) Maintains a 24-hour response capability in the event of an earthquake, major disaster, or terrorism attack. A response would also include mobilization of the following volunteer units: Air Squadron, Communications Team, Mounted Posse, Search and Rescue, and Underwater Recovery.</i>	
Peralta Police Services	(510) 465-3514
Regional Training Center	(925) 551-6970
Santa Rita Jail	(925) 551-6500
5325 Broder Blvd., Dublin, CA 94568	
Inmate Services	(925) 551-6580
www.alamedacountysheriff.org - Inmate Locator	

LEGAL SERVICES

Law Library

125 12 th St., Oakland, CA 94607	(510) 208-4800
224 W. Winton Ave., Room 162, Hayward, CA 94544	(510) 670-5230

Public Defender's Office

(510) 272-6600

1401 Lakeside Dr., Ste. 400, Oakland, CA 94612

Alameda County Resources

LIBRARIES, COUNTY

County Library Administration	(510) 745-1500
2450 Stevenson Blvd., Fremont, CA 94538	
www.aclibrary.org	
Branch Libraries:	
Albany	(510) 526-3720
1247 Marin Ave., Albany, CA 94706	
Bookmobile	(510) 745-1477
2450 Stevenson Blvd., Fremont, CA 94538	
Castro Valley	(510) 667-7900
3600 Norbridge Ave., Castro Valley, CA 94546	
Centerville	(510) 795-2629
3801 Nicolet Ave., Fremont, CA 94536	
Dublin	(925) 828-1315
200 Civic Center Plaza, Dublin, CA 94568	
Extension Services	(510) 745-1477
2450 Stevenson Blvd., Fremont, CA 94538	
Fremont	(510) 745-1400
2400 Stevenson Blvd., Fremont, CA 94538	
Irvington	(510) 795-2631
41825 Greenpark Dr., Fremont, CA 94538	
Newark	(510) 795-2627
6300 Civic Terrace Ave., Newark, CA 94560	
Niles	(510) 795-2626
150 I St., Fremont, CA 94536	
San Lorenzo	(510) 670-6283
395 Paseo Grande, San Lorenzo, CA 94580	
Union City	(510) 745-1464
34007 Alvarado-Niles Blvd., Union City, CA 94587	

Alameda County Resources

PAYMENT OF COUNTY & COURT OBLIGATIONS

Central Collection's Office (510) 208-9900
1221 Oak St., Room 220, Oakland, CA 94612 Fax (510) 891-5697
To pay County and Court obligations, fines, restitutions, environmental fees, bail bonds, welfare fraud, overpayments, and court judgments.

Tax Collection

Treasurer-Tax Collector (510) 272-6800
1221 Oak St., Room 131, Oakland, CA 94612 Fax (510) 272-3856
Business Licenses (510) 670-6400
224 W. Winton Ave., Room 139, Hayward, CA 94544

PROPERTY ASSESSMENT

Assessor's Office (510) 272-3787
1221 Oak St., Room 145, Oakland, CA 94612 Fax (510) 272-3803

Auditor-Controller's Office (510) 272-6564
1221 Oak St., Room 249, Oakland, CA 94612 Fax (510) 272-6725
For property tax overpayment refunds.

Clerk of the Board (510) 272-3854
P.O. Box 1499, Oakland, CA 94612
For Assessment Appeals claims/applications processing.

PUBLIC ASSISTANCE

Social Services Agency

Client Services FOR ALL COUNTY OFFICES

CalWORKs, Food Stamps, General Assistance, Medi-Cal (510) 263-2420
Toll-Free (888) 999-4772
Children & Family Services - Information (510) 670-6699
In-Home Support Services, Dept. of Aging & Adult (510) 577-1800
Welfare Fraud Reporting Hotline (888) 991-TIPS
Toll-Free (8477)

Alameda County Resources

PUBLIC ASSISTANCE *(Continued)*

Social Services Agency

Offices:

- North County Multi-Service Center Information** (510) 891-0700
Serving North Oakland
2000 San Pablo Ave., Oakland, CA 94612
- South County: Eden Area Multi-Service Center Information** (510) 670-6000
Serving Castro Valley, San Leandro & Hayward
24100 Amador St., Hayward, CA 94544
- Eastmont Self-Sufficiency Center Information** (510) 383-5300
Serving Oakland from Lake Merritt to San Leandro
6955 Foothill Blvd., Suite 100, Oakland, CA 94605
- Fremont Outstation Information** *(by appointment only)* (510) 795-2428
Serving Fremont, Newark & Union City
39155 Liberty St., Ste. C330, Fremont, CA 94538
- Livermore Outstation Information** (925) 455-0747
Serving Livermore, Pleasanton, Dublin & Sunol
3311 Pacific Ave., Livermore, CA 94550
- Medi-Cal Center Information** (510) 777-2300
8477 Enterprise Way, Oakland, CA 94621

PUBLIC WORKS

- Public Works Agency** (510) 670-5480
399 Elmhurst St., Hayward, CA 94544
(serving unincorporated areas of Alameda County)
- Building Inspection and Permits (510) 670-5440
- Flood Program and Road Program – General Information (510) 670-5480
- Flood Control and Road Maintenance (510) 670-5500

Alameda County Resources

PURCHASING

Purchasing Used Goods

Property and Salvage, *General Services Agency* (510) 667-7591
15800 Foothill Blvd., San Leandro, CA 94578

REPORTING VIOLENCE, ABUSE OR NEGLECT

Child Abuse Hotline (510) 259-1800
Child Protective Services, *Social Services Agency, Alameda County*

Elder Abuse Hotline (510) 577-3500
Adult Protective Services, *Social Services Agency, Alameda County*

Toll-Free (866) 225-5277

SCHOOLS, COUNTY

Superintendent of Schools (510) 887-0152
313 West Winton Ave., Hayward, CA 94544

SENIOR/DISABLED SERVICES

Adult Protective Services, *Social Services Agency* (510) 577-3500
6955 Foothill Blvd., Suite 300, Oakland, CA 94605

Toll-Free Hotline (866) 225-5277

Area Agency on Aging (800) 510-2020

Community Development Agency (510) 670-5333
224 W. Winton Ave., Hayward, CA 94544

Minor Home Repair and Housing Rehabilitation (510) 670-5398

(*Not available in all areas of Alameda County*) or (510) 670-5399

District Attorney's Office (510) 569-9281
Elder Protection

In-Home Support Services, Dept. of Aging & Adult (510) 577-1800

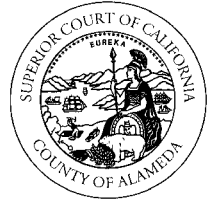
National Institute on Aging (800) 222-2225

Alameda County Resources

SEXUAL ASSAULT, CHILD ABUSE, SEXUAL EXPLOITATION OF MINORS

Alameda County Family Justice Center	(510) 267-8800
470 27 th St., Oakland, CA 94612	
<i>A one-stop center for families experiencing domestic violence, sexual assault, child abuse, elder abuse, and access to services countywide.</i>	
Bay Area Women Against Rape	(510) 430-1298
Child Protective Services	(510) 259-1800
Children’s Hospital	
Center for Child Protection	(510) 428-3742
747 52 nd St., Oakland, CA 94609	
<i>For children 14 years and younger.</i>	
District Attorney’s Office – Victim-Witness Program	(510) 272-6180
1401 Lakeside Dr., Ste. 802, Oakland, CA 94612	Fax (510) 208-9565
Highland Hospital	(510) 437-8341
<i>For adolescents 14 years and older who require an acute medical evaluation after recent sexual assault.</i>	
Highland Sexual Assault Response Team (SART)	(510) 534-9290
Highland Hospital Campus	
1411 East 31 st St., Oakland, CA 94602	
SAVE – Shelter Against Violent Environments	(510) 794-6055
24-Hour Line	
Tri-Valley Haven	(800) 884-8119

Alameda County Resources



SUPERIOR COURTS OF CALIFORNIA **County of Alameda** www.alameda.courts.ca.gov/courts

Jury Services	(510) 891-6031
Court Locations:	
Berkeley Courthouse	(510) 647-4400
2120 Martin Luther King, Jr. Way, Berkeley, CA 94704	
Family & Child Bureau	(510) 690-2500
224 W. Winton Ave., Hayward, CA 94544	
Fremont Hall of Justice	(510) 818-7500
39439 Paseo Padre Parkway, Fremont, CA 94538	
Gale-Schenone Hall of Justice	(925) 227-6700
5672 Stoneridge Dr., Pleasanton, CA 94588	
George E. McDonald Hall of Justice	(510) 263-4300
2233 Shoreline Dr., Alameda, CA 94501	
Hayward Hall of Justice	(510) 690-2700
24405 Amador St., Hayward, CA 94544	
Juvenile Justice Center	(510) 618-1100
2500 Fairmont Dr., San Leandro, CA 94578	
Oakland Post Office	(510) 268-5100
201 13 th St., Oakland, CA 94612	
Office of Collaborative Court Services	(510) 272-1202
661 Washington St., Oakland, CA 94607	
Office of Information Technology-Court Operator	(510) 636-8800
Probate Court Investigator's Office	(510) 636-8820
1221 Oak St., Oakland, CA 94612	
Renè C. Davidson/Alameda County Courthouse	(510) 891-6000
1225 Fallon St., Oakland, CA 94612	
Self-Help Center	(510) 272-1393
1225 Fallon St., Oakland, CA 94612	
Wiley W. Manuel Courthouse	(510) 627-4700
661 Washington St., Oakland, CA 94607	

Alameda County Resources

VETERANS' SERVICES

Veteran Services Office

Oakland (Main Office)	(510) 577-1926
6955 Foothill Blvd., Ste. 300, Oakland, CA 94605	
Hayward	(510) 265-8271
24100 Amador St., Hayward, CA 94544	
Fremont	(510) 795-2686
39155 Liberty St., Ste. F620, Fremont, CA 94538	

Veterans Memorial Buildings

1325 Portland Ave., Albany, CA 94706	(510) 525-9316
22737 Main St., Hayward, CA 94541	(510) 582-9757
37154 2 nd St., Fremont, CA 94536	(510) 790-2853
522 South L St., Livermore, CA 94550	(925) 373-5700
1105 Bancroft Ave., San Leandro, CA 94577	(510) 352-3785

VICTIM-WITNESS ASSISTANCE

District Attorney's Office - Victim-Witness Program	(510) 272-6180
1401 Lakeside Dr., Ste. 802, Oakland, CA 94612	Fax (510) 208-9565

VITAL/OFFICIAL PUBLIC RECORDS

Clerk-Recorder's Office	(510) 272-6362
1106 Madison St., Oakland, CA 94607	
Toll-Free	(888) 280-7708

Birth/Death/Marriage certificates, marriage license and ceremony information, deputization as one-time Deputy Civil Marriage Commissioner, volunteer as Deputy Civil Marriage Commissioner. Recording of official records (e.g., grand deed, reconveyance, deed of trust, maps, liens).

Alameda County Resources

VOTING

Registrar of Voters

1225 Fallon St., G-1, Oakland, CA 94612

Administration	(510) 272-6933
..... Fax	(510) 272-6982
24-Hour Hotline	(510) 267-8683
TDD	(510) 208-4967
Vote By Mail (Absentee Voting)	(510) 272-6973
Poll Workers	(510) 272-6971
Voter Registration	(510) 272-6973
Election Results (after 8 p.m. on Election Night)	(510) 272-6933

YOUTH SERVICES

Alameda County ILSP (Independent Living Skills Program) (510) 667-7696

675 Hegenberger Rd., Ste. 100, Oakland, CA 94621 Fax (510) 667-7629

Supports foster and probation youth in developing the skills they will need for future success.

Services are available to all youth in out-of-home placement by the Juvenile Court on or after their sixteenth birthday.

Eden I & R, Inc. (510) 537-2710

www.edenir.org

For more information, please see page 6.

Online Service Database finder

www.alamedaco.info

Click on Resource Finder and enter type of service you are seeking (e.g., youth counseling, tutoring, prevention).

Youth UpRising (510) 777-9909

8711 MacArthur Blvd., Oakland, CA 94605 Fax (510) 777-9949

Offers a wide range of programs and services that develop youth leadership in order to transform the community.

ZONE 7 WATER AGENCY

Alameda County Flood Control & Water Conservation District

www.zone7water.com

100 N. Canyon Parkway, Livermore, CA 94551 (925) 454-5000

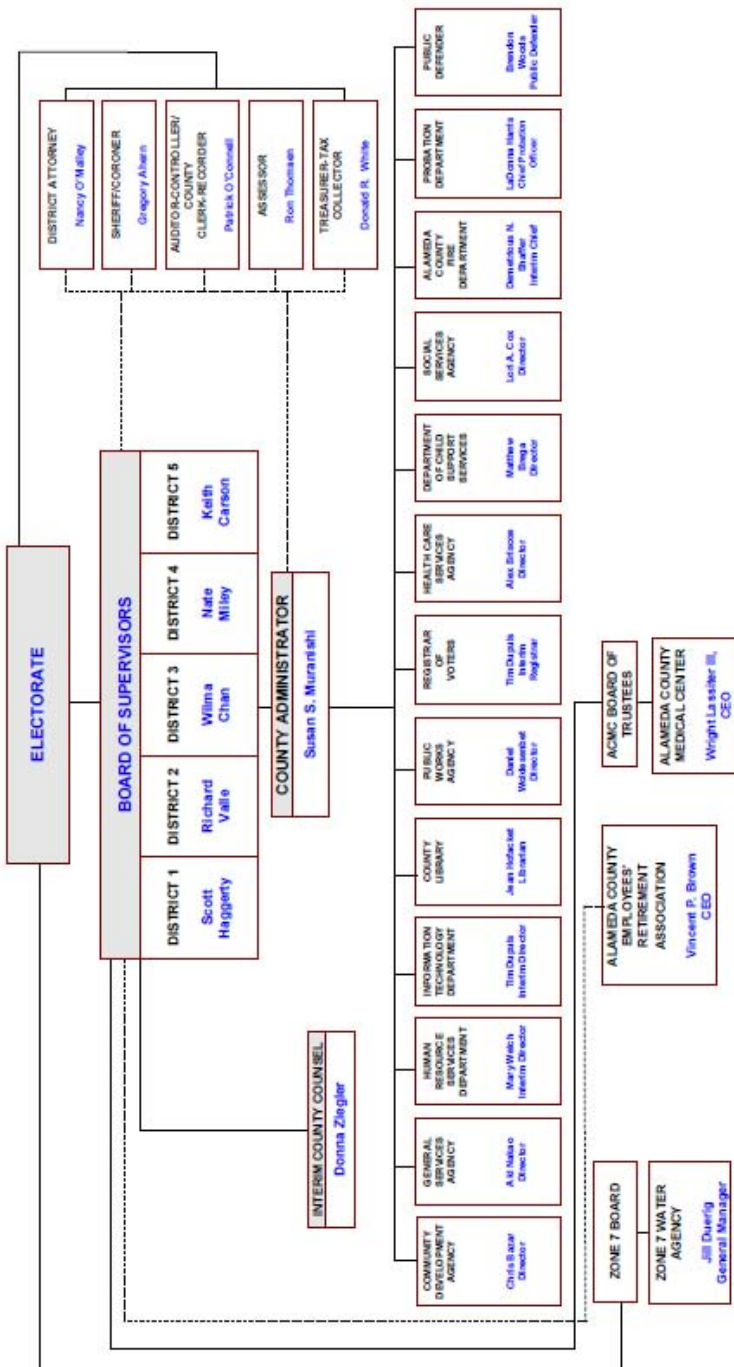
Provides water supply and treatment to the cities of Livermore and Pleasanton, Dublin San Ramon Services District and the California Water Services Company, untreated water for agriculture and flood protection in the Tri-Valley area of Alameda County. 80% of the source water is from the State Water Project conveyed through the Sacramento Delta.

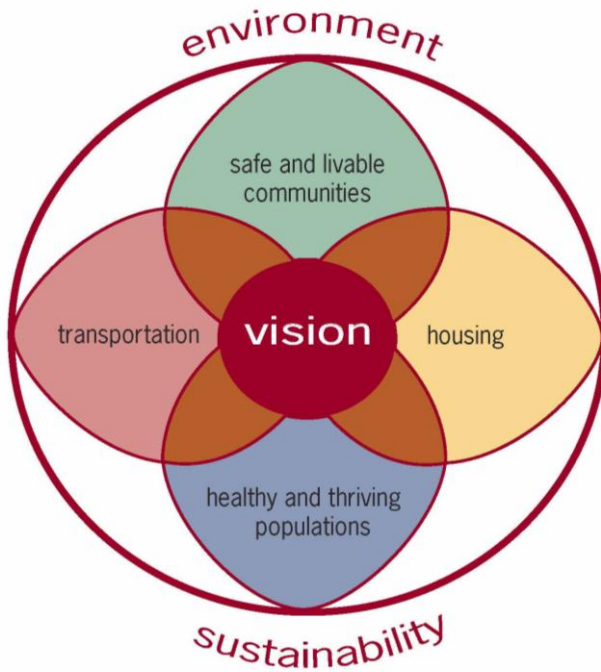
Appendix

Listing of Alameda County Agencies/Departments

Arts Commission	(510) 208-9646
Assessor	(510) 272-3787
Auditor-Controller	(510) 272-6565
▪ Central Collection's Office	(510) 208-9900
Child Care Planning Council	(510) 208-9620
Child Support Services	Toll-Free: 1(866) 901-3212
Clerk-Recorder	(510) 272-6362
Community Development Agency	(510) 670-5333
▪ Agriculture/Weights and Measures	(510) 670-5232
▪ Housing & Community Development	(510) 670-5404
▪ Lead Poisoning Prevention	(510) 567-8280
▪ Neighborhood Preservation and Sustainability	(510) 670-6172
▪ Planning Department	(510) 670-5400
▪ Redevelopment Agency	(510) 670-5333
Conference Center	(510) 272-6467
County Administrator's Office	(510) 272-6984
▪ Clerk of the Board	(510) 208-4949
▪ East Bay Economic Development Alliance	(510) 272-3885
County Counsel	(510) 272-6700
District Attorney	(510) 272-6222
Fire Department - Administration	(510) 618-3490 or (925) 828-9060
General Services Agency	(510) 208-9700
Grand Jury	(510) 272-6259
Health Care Services Agency - Administration	(510) 618-3452
▪ Behavioral Health Care Services (Alcohol, Drug & Mental Health Services)	(510) 567-8100
▪ Emergency Medical Service	(510) 618-2050
▪ Environmental Health	(510) 567-6700
▪ Public Health	(510) 267-8000
Human Resource Services	(510) 272-6471
Information Technology Department	(510) 481-3700
Library, County	(510) 745-1500
Probation Department	(510) 268-7245
Public Defender	(510) 272-6600
Public Works Agency	(510) 670-5480
Registrar of Voters	(510) 267-8683
Sheriff's Office - Administration	(510) 272-6878
Social Services Agency - Administration	(510) 271-9100
Treasurer-Tax Collector	(510) 272-6800
Zone 7 Water Agency	(925) 454-5000

ALAMEDA COUNTY ORGANIZATIONAL CHART





Our Integrated Vision: Alameda County will achieve sustainability, which we define as the long-term health, social well-being, and economic vitality of the community—through an integrated approach that improves quality of life for all, including our most vulnerable populations. Housing, transportation, and community development projects will create diverse and friendly neighborhoods that promote healthy lifestyles, greener choices, and a strong local economy.

By integrating sustainable strategies into service delivery, County policies, and regional partnerships, Alameda County will prioritize the preservation and restoration of our ecosystems. Find out more at www.acsustain.org.

For more information on Alameda County's Strategic Vision visit www.co.alameda.ca.us/strategic.htm

Mission

To enrich the lives of Alameda County residents through visionary policies and accessible, responsive, and effective services.

Vision

Alameda County is recognized as one of the best counties in which to live, work and do business.

Values

Integrity, honesty and respect fostering mutual trust.

Transparency and accountability achieved through open communications and involvement of diverse community voices.

Fiscal stewardship reflecting the responsible management of resources.

Customer service built on commitment, accessibility and responsiveness.

Excellence in performance based on strong leadership, teamwork and a willingness to take risks.

Diversity recognizing the unique qualities of every individual and his or her perspective.

Environmental stewardship to preserve, protect and restore our natural resources.

Social responsibility promoting self-sufficiency, economic independence and an interdependent system of care and support.

Compassion ensuring all people are treated with respect, dignity and fairness.