

# BEHAVIORAL HEALTH CARE SERVICES

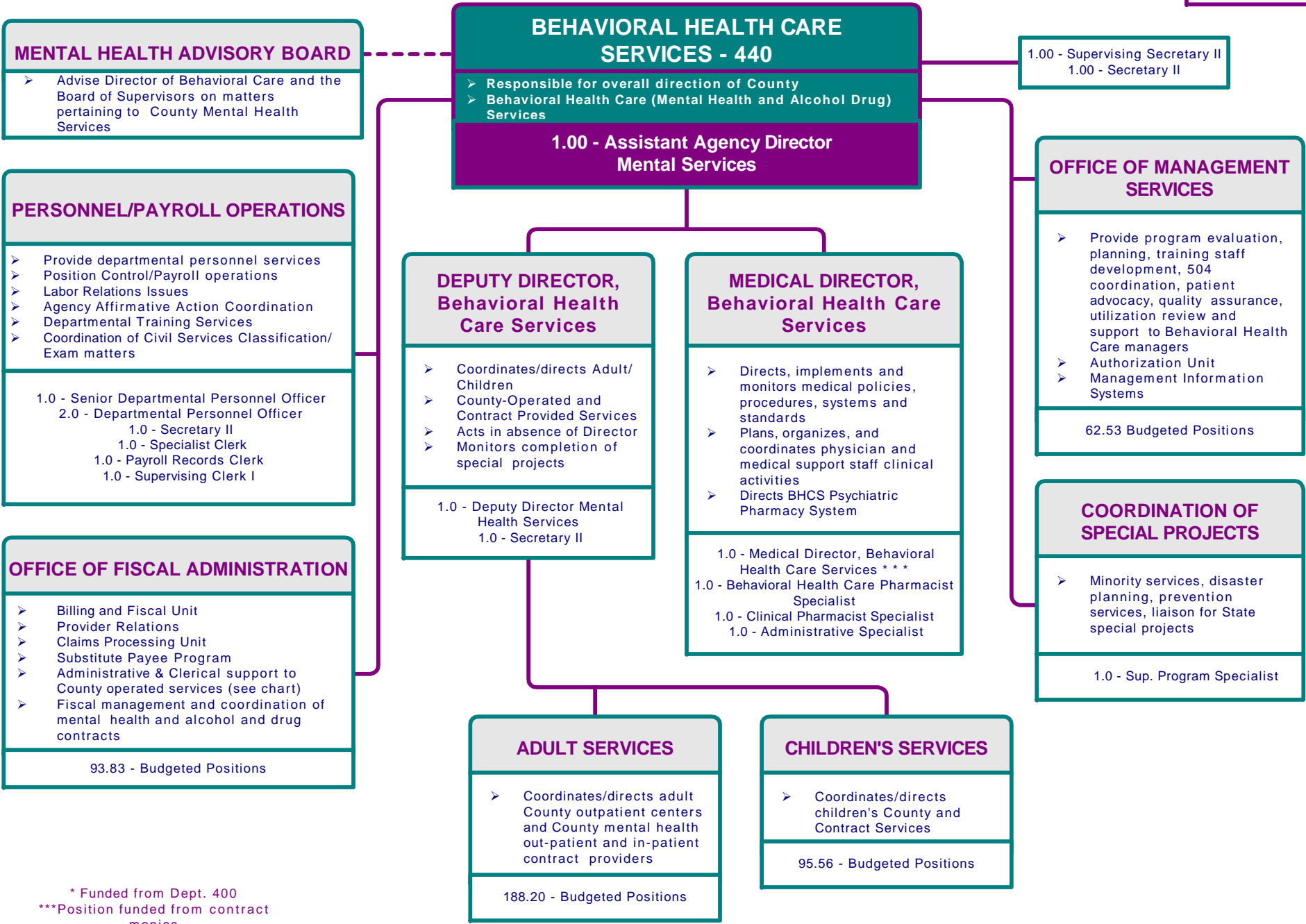
Function & Organization Chart - FY 2003-2004



## MISSION STATEMENT:

**Mental Health Services** - To provide a comprehensive network of integrated programs and services for all people with serious psychiatric disabilities, regardless of age, ethnicity, language or geographic location, in order to minimize hospitalization, stabilize and manage psychiatric symptoms, and help them achieve the highest possible level of successful functioning in their community of choice; and to provide mental health crisis and recovery services for the general population following major disasters.

**Alcohol and Drug Services** - To reduce the incidence of alcohol and other drug problems through the provision of a comprehensive system of prevention, treatment, and rehabilitation services for children, young adults, and older adults, in order to reduce illness, death, disability and cost to society resulting from substance abuse.



\* Funded from Dept. 400  
\*\*\*Position funded from contract monies

## OFFICE OF FISCAL ADMINISTRATION

- Provide Administration, Financial, Billing, Eligibility Determination and Substitute Payee Services to the County Mental Health Services

1.0 - Administrative/Financial Services Manager

## COUNTY CLINIC SUPPORT SERVICES UNIT

1.0 - Sup. Financial Services Specialist  
1.0 - Administrative Assistant

## FISCAL SERVICES UNIT

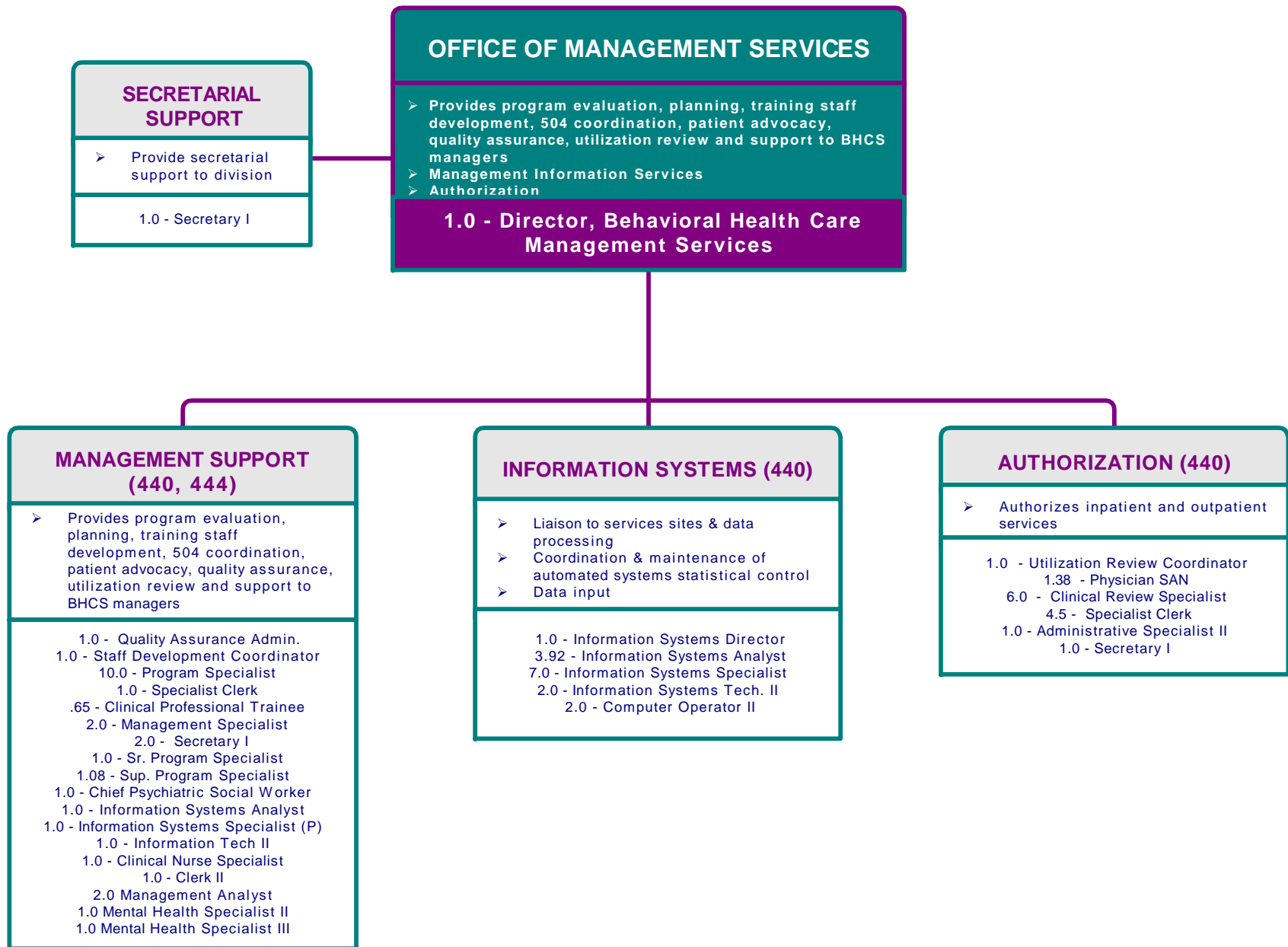
1.0 Financial Services Officer  
1.0 Senior Financial Services Specialist  
2.0 Supervising Financial Services Specialist  
8.0 Financial Services Specialist I/II  
2.0 Staff Services Assistant  
5.0 Account Clerk II  
3.0 Accounting Specialist  
2.0 Accounting Technician  
.83 Accountant II  
1.0 Stenographer  
2.0 Financial Services Specialist (P)  
1.0 Secretary I  
1.0 Sr. Accountant  
.08 Clerk II

## PROVIDER RELATIONS/CLIENT ACCOUNT MANAGEMENT

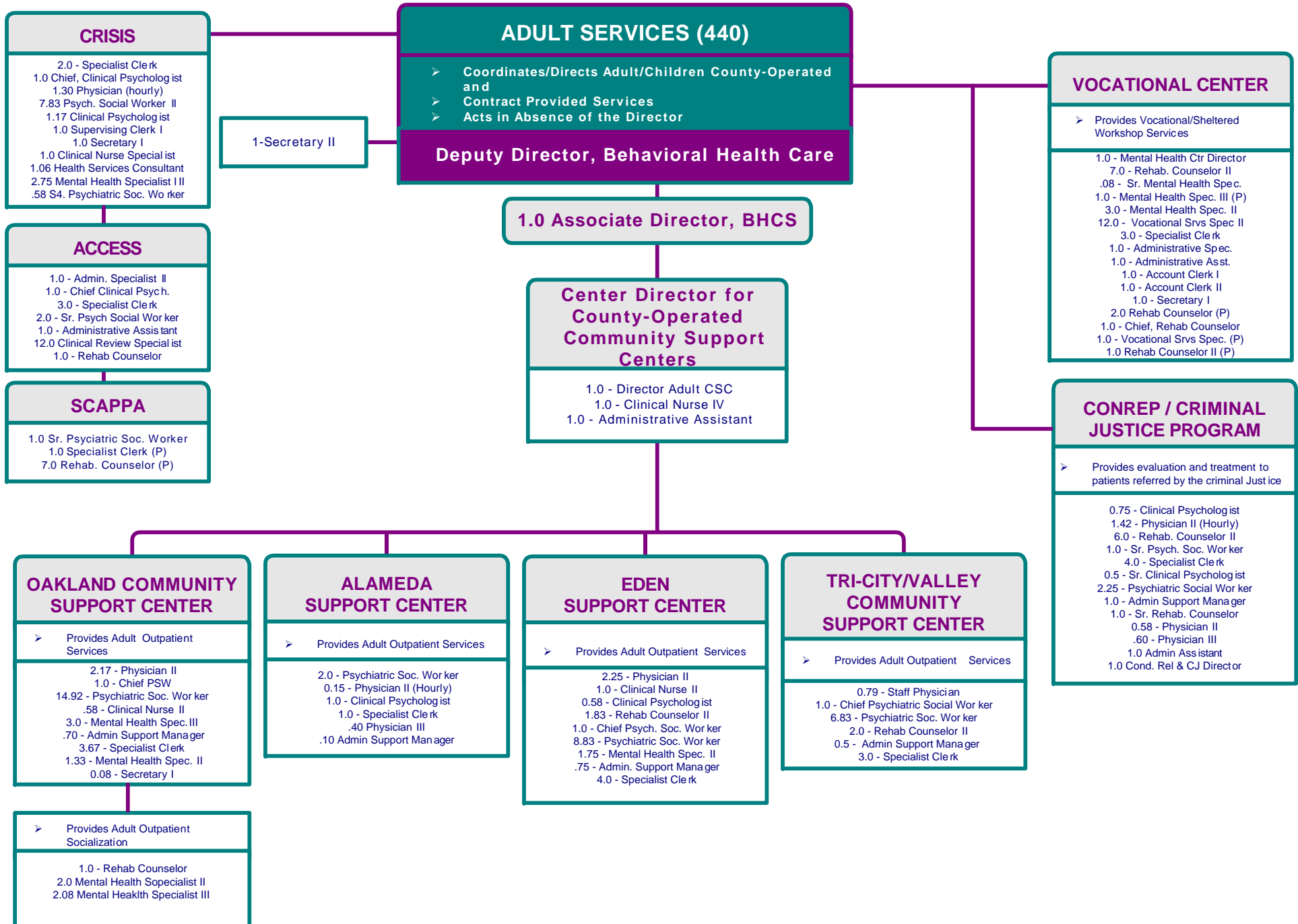
1.0 Financial Services Officer  
2.0 Financial Services Specialist  
1.0 Accounting Technician  
1.0 Accounting Specialist  
1.0 Senior Billing Technician  
2.0 Billing Technician III  
8.0 Billing Technician II  
.08 Clerk II  
1.0 Patient Services Technician Supervisor  
14.33 Patient Services Technician II  
2.5 Specialist Clerk  
1.5 Administrative Assistant  
7.0 Account Clerk II  
2.0 Sup. Financial Services Specialist  
1.0 Administrative Specialist II  
.50 Psychiatric Social Worker  
.64 Clerk Intermittent  
1.5 Specialist Clerk (P)

## CONTRACT SERVICES UNIT

1.0 Financial Services Officer  
1.0 Senior Financial Services Specialist  
5.0 Financial Services Specialist I/II  
2.0 Financial Services Specialist I/II (P)  
2.0 Accounting Specialist  
1.0 Secretary I  
1.0 Administrative Assistant  
1.0 Sup. Financial Services Specialist



\*\*\* Positions funded from contract monies  
 \*\*\*\*1 Program Specialist assigned to the Public Health Dept.



**CHILDREN'S SERVICES**

- Coordinates/Directs Children's County and Contract Outpatient Centers
- Provides Children's Case Management and Crisis Services, AB 3632, and Diagnostic Services Providers

**1.0 - Director, Children's Services**  
**1.0 - Assistant Director**  
**1.0 - Program Specialist**

1-Secretary I

**AB 3632/SED**

1.0 - Chief Psychiatric Social Worker  
 1.0 - Sr. Clinical Psychologist  
 13.0 - Psychiatric Social Worker I/II  
 2.42 - Specialist Clerk  
 0.2 - Admin. Support Manager  
 3.0 - Marriage, Family Counselor

**CHILDREN'S & YOUTH SERVICES**

0.5 - Specialist Clerk  
 3.0 - Psych. Social Worker I/II  
 1.0 - Rehab. Counselor I/II  
 0.16 - Admin Support Manager

**CHILDREN'S SYSTEM OF CARE**

1.0 - System of Care Coordinator  
 1.0 - Specialist Clerk  
 1.0 - Secretary I  
 1.0 - Senior Psych. Social Worker  
 7.0 - Psych. Social Worker I/II  
 0.24 - Admin Support Manager  
 2.0 - Mental Health Specialist II

**EARLY INFANT CARE**

1.0 - Senior Psych. Social Worker  
 3.0 - Psych. Social Worker II

**GUIDANCE/DEPENDENCY CLINIC**

1.0 - Chief Psychiatric Social Worker  
 1.23 - Physician II (Hourly)  
 4.5 - Clinical Psychologist  
 2.92 - Psychiatric Social Worker  
 3.0 - Specialist Clerk  
 0.4 - Admin Support Manager  
 4.0 - Mental Health Specialist II  
 1.0 - Sr. Psychiatric Social Worker  
 1.0 Marriage, Family Counselor

**OAKLAND COMMUNITY SUPPORT CENTER**

- Provides Children's Outpatient Services

0.25 - Physician II  
 0.75 - Chief Psychiatric Soc. Worker  
 6.92 - Psychiatric Soc. Worker II  
 1.5 - Specialist Clerk  
 1.0 - Sr. Psychiatric Social Worker  
 .20 - Admin. Support Manager

**ALAMEDA COMMUNITY SUPPORT CENTER**

- Provides Children's Outpatient Services

0.83 - Psychiatric Soc. Worker II  
 0.25 - Chief Psychiatric Soc. Worker

**EDEN COMMUNITY SUPPORT CENTER**

- Provides Children's Outpatient Services

0.21 - Physician II (Hourly)  
 1.0 - Clinical Psychologist  
 3.5 - Psych. Social Worker II  
 1.5 - Specialist Clerk  
 0.25 - Admin. Support Manager  
 1.0 - Mental Health Specialist (P)  
 1.0 - Sr. Psychiatric Social Worker

**TRI-CITY/VALLEY COMMUNITY SUPPORT CENTER**

- Provides Children's Outpatient Services

0.58 - Clinical Psychologist  
 0.75 - Clinical Nurse Specialist  
 6.0 - Psychiatric Soc. Worker  
 2.0 - Specialist Clerk  
 0.5 - Admin. Support Manager