

HEALTH CARE SERVICES AGENCY

Function & Organization Chart - FY 2003 -2004

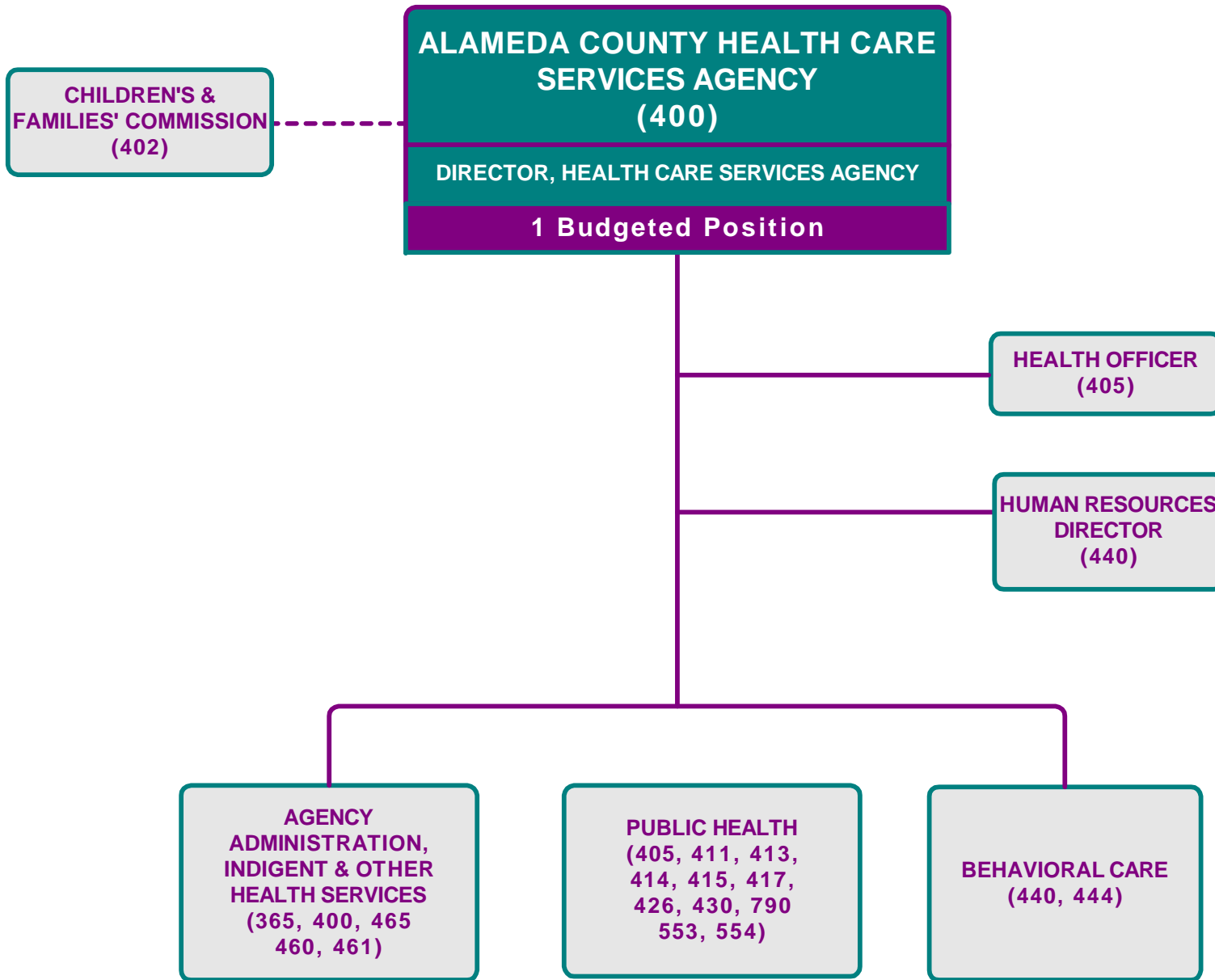


MISSION STATEMENT:

The mission of the Health Care Services Agency is to provide integrated health care services to the residents of Alameda County within the context of Managed Care and a private/public partnership structure.

Budget Unit #	Budgeted Positions
365	10.00
400	12.35
465	15.00
Total	37.35

Budget Unit #	Budgeted Positions
440	364.29
444	20.17
405	57.70
411	69.00
413	148.00
414	79.00
415	40.00
417	19.00
430	81.00
553	14.00
554	25.00
790	0.50 (County)18.0(UC)
Total	917.66



HEALTH CARE SERVICES AGENCY (350101)

To provide fully integrated health care services through a comprehensive network of public and private partnerships that ensures optimal health and well-being and respects the diversity of all residents.

1.0 - Director of Health Care Services Agency

Health Officer

Human Resources Director

SECRETARIAL SUPPORT (350101)

1.0 - Administrative Secretary

AGENCY ADMINISTRATION, INDIGENT & OTHER HEALTH SERVICES (350101, 350111, 350121, 350141)

- Administration of the County Medically Indigent Services Plan (CMSP)
- Administration and monitoring of all indigent health care provider agreements
- Administration and maintenance of the Medically Indigent Care Reporting (MICRS) database
- Implementation of programs that expand accessibility of needed medical services
- Development of insurance alternatives
- Administration of the Medi-Cal Administrative Activities (MAA) and Targeted Case Management (TCM) claiming program
- Coordination of agency budget process and financial forecasting process
- Fiscal support to Health Care Services departments
- Fiscal support to the ICPC
- Administration and fiscal support to the Children and Families Commission
- Administrative and fiscal support to CASA
- Tobacco Master Settlement Fund management

1.0 - Administrative Financial Services Manager
 1.0 - Information Systems Analyst
 1.0 - Information Systems Specialist
 0.4 - Consultant (contract)
 1.0 - Secretary II
 1.0 - Program/Financial Specialist
 1.0 - Financial Services Specialist
 1.0 Accounting Specialist

INTERAGENCY CHILDREN'S POLICY COUNCIL (ICPC) (350141)

- Develop a county-wide common approach to children and family services
- Define the systems integration needed to implement and support this common approach
- Create four crucial tools for building an effective county-wide children and family services agenda

1.0 - Program Director, ICPC
 2.0 - Program Specialist
 1.0 - Administrative Assistant (contract)



CHILDREN'S/FAMILY'S HEALTH ISSUES (350101, 350121)

- Coordination of county-wide children's services and identification of barriers and development of county-wide children's policies
- Project YES!
- Administration of the School-based Health Center Fund
- Administrative and Program Support to CASA

1.0 - Management Specialist
 1.0 - Program Specialist
 1.0 - Administrative Assistant

CASA (COURT-APPOINTED SPECIAL ADVOCATES) (350121)

- Provides child advocates appointed by Juvenile Court to represent best interests of children under court's jurisdiction

1.0 - Volunteer Program Coordinator
 4.0 - Consultant, SSA
 2.0 - Health Services Consultant

HEALTHY FAMILIES/ MEDI-CAL OUTREACH (350121)

- Coordination of county-wide insurance enrollment activities

1.0 - Oversight Manager (contract)
 1.0 - Program Coordinator (contract)
 1.0 - Health Services Consultant
 6.0 - Outreach Specialist (contract)