

PUBLIC DEFENDER

Function & Organization Chart - FY 2003 - 2004



MISSION STATEMENT:

According to law, the Public Defender is the primary defense attorney for all indigent accused persons in Alameda County. The Public Defender is mandated to defend in the State court system all persons within the County who are required by state, State or Federal Constitution to be provided with legal counsel at public expense. The mission of the Public Defender is to provide a fully competent, effective and ethical defense to each client whose cause has been entrusted to the office for representation; to provide all mandated legal services in a cost effective and efficient manner; and to conduct that representation in a manner that, in so far as possible, the local criminal justice system operates effectively, efficiently and achieves justice.

**PUBLIC DEFENDER DEPARTMENT
(220100)**

➤ Represent indigent defendants at all stages of proceeding in all Alameda County Consolidated Superior Courts for any criminal offenses and certain types of civil cases, such as Mental Illness proceedings.¹

1.0 - PUBLIC DEFENDER

1 - Secretary II

1 - CHIEF ASST. PUBLIC DEFENDER

SUPPORT SERVICES DIVISION
46.58 - Budgeted Positions

LEGAL DIVISION
108.08 - Budgeted Positions

INVESTIGATIVE DIVISION
22.33- Budgeted Positions

LAKESIDE MAIN SECTION

NORTH COUNTY SECTION

SOUTH/EAST CO. SECTION

JUVENILE SECTION

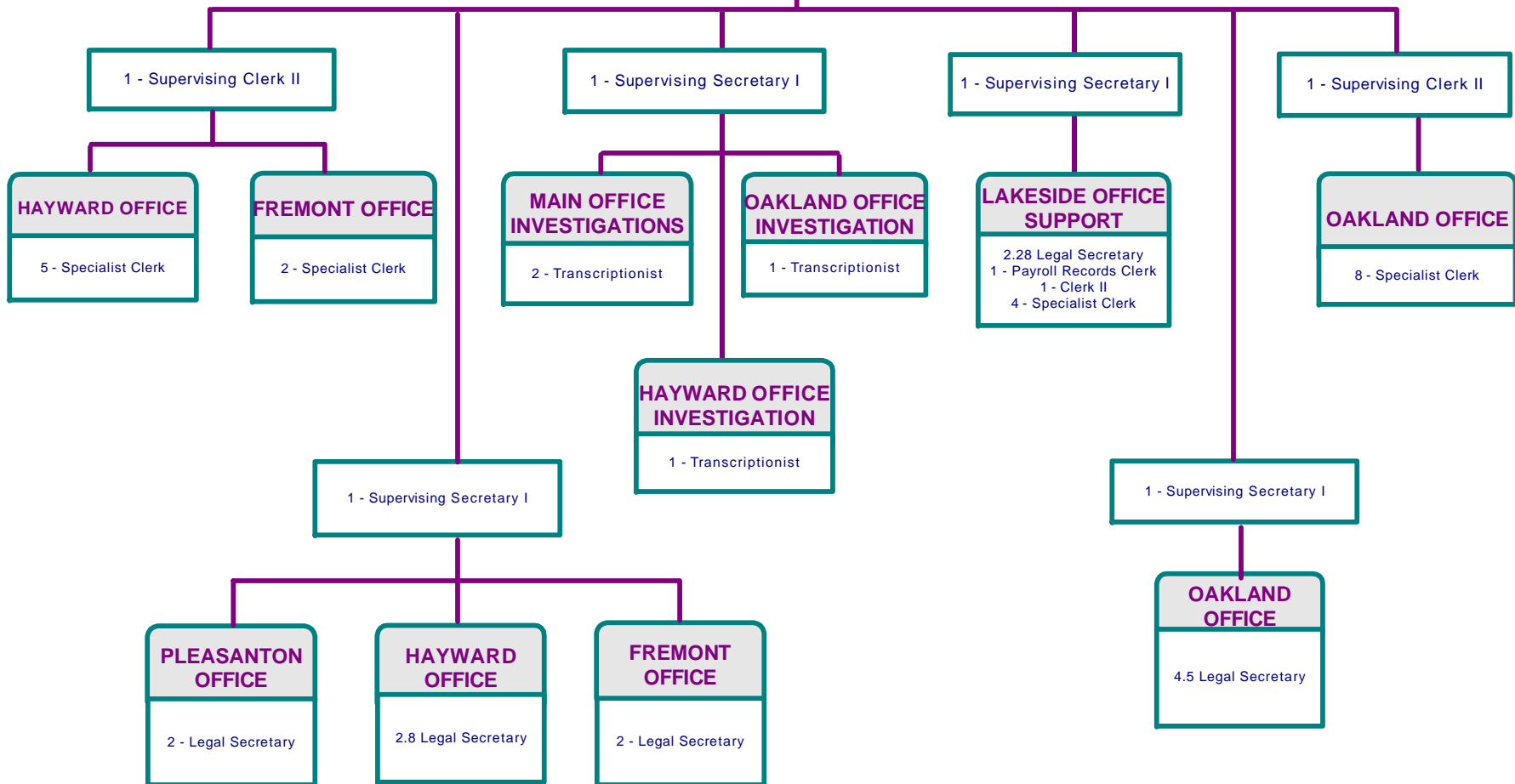
¹Dependency Representation now shows as a separate Org within the Public Defender's Office

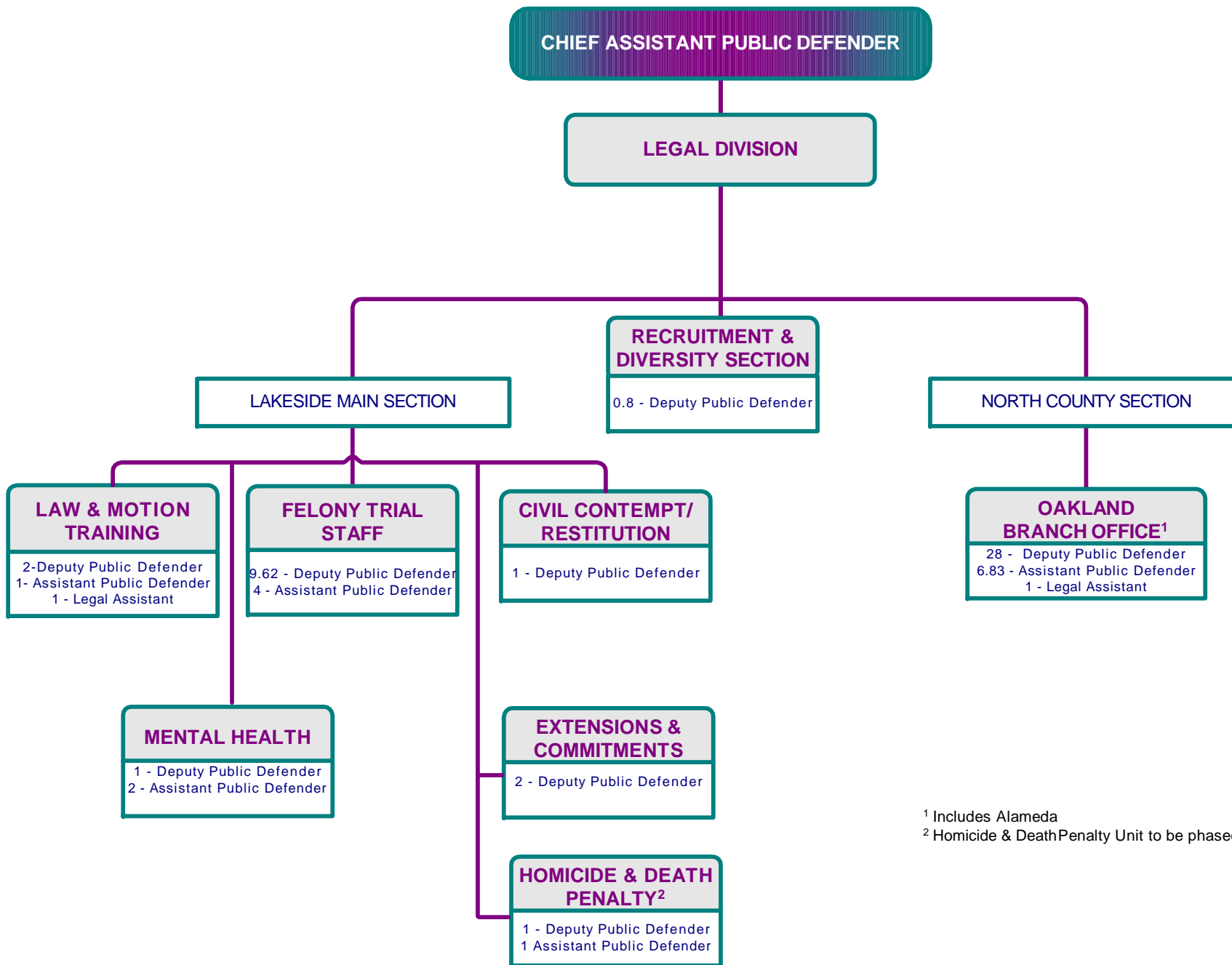
SUPPORT SERVICES DIVISION

- Provide administrative, clerical, and secretarial support services for legal and investigative staffs.
- Propose requests for control and monitor grant projects.
- Budget preparation and expenditure control.
- Personnel and payroll services.

1.0 - Administrative Services Officer

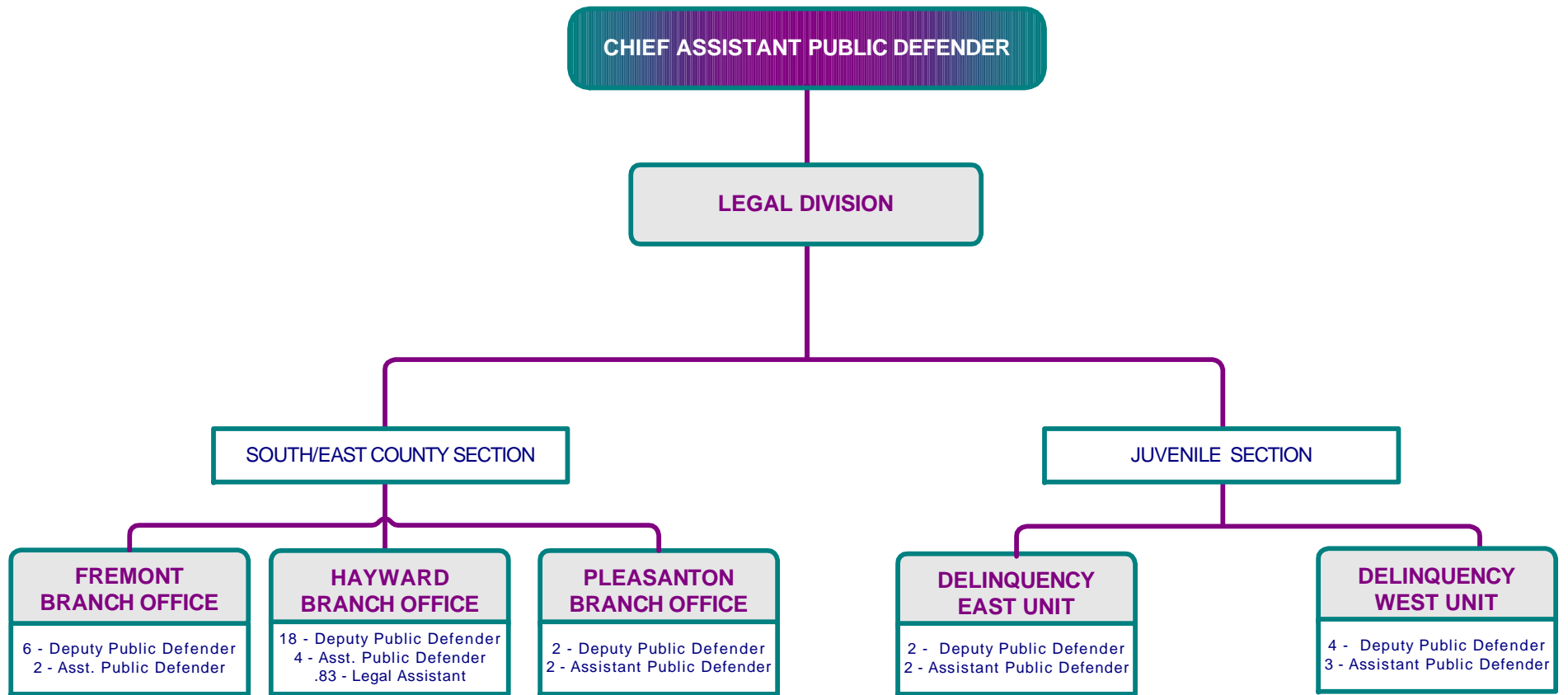
1 - Supervising Clerk III

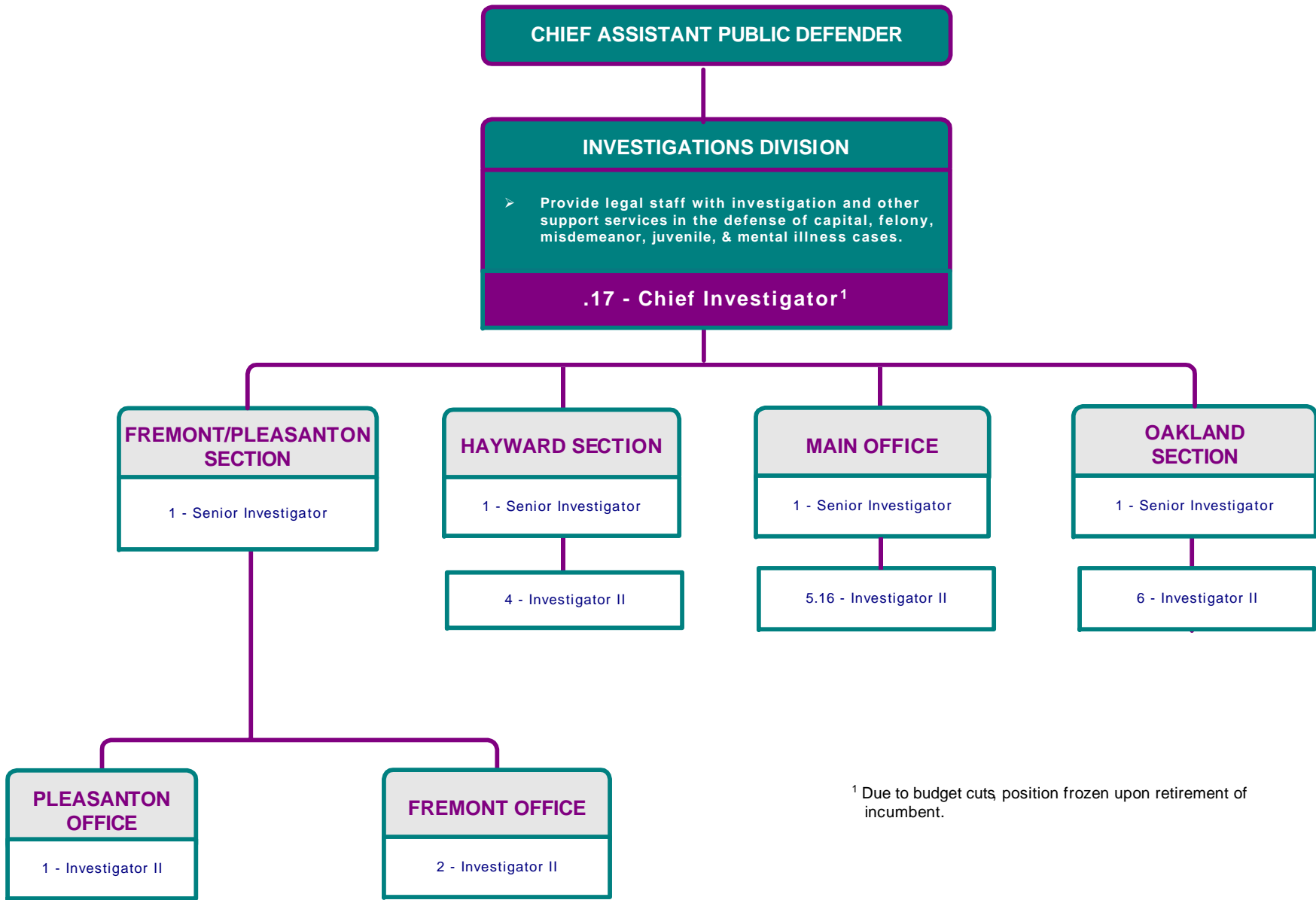




¹ Includes Alameda

² Homicide & Death Penalty Unit to be phased out in 2003.





¹ Due to budget cuts, position frozen upon retirement of incumbent.

**PUBLIC DEFENDER DEPARTMENT
(220103)**

CHIEF ASSISTANT PUBLIC DEFENDER

DEPENDENCY UNIT

➤ Pursuant to an MOU with the Superior Court, represent indigent minors in Alameda County Consolidated Superior Courts for Juvenile Dependency proceedings.

14.0 - Budgeted Positions

1 - Assistant Public Defender
3 - Dependency Attorney
5 - Associate Dependency Attorney
2 - Legal Assistant
2 - Specialist Clerk
.5 - Clerk II
.5 - Legal Secretary