

PUBLIC HEALTH DEPARTMENT

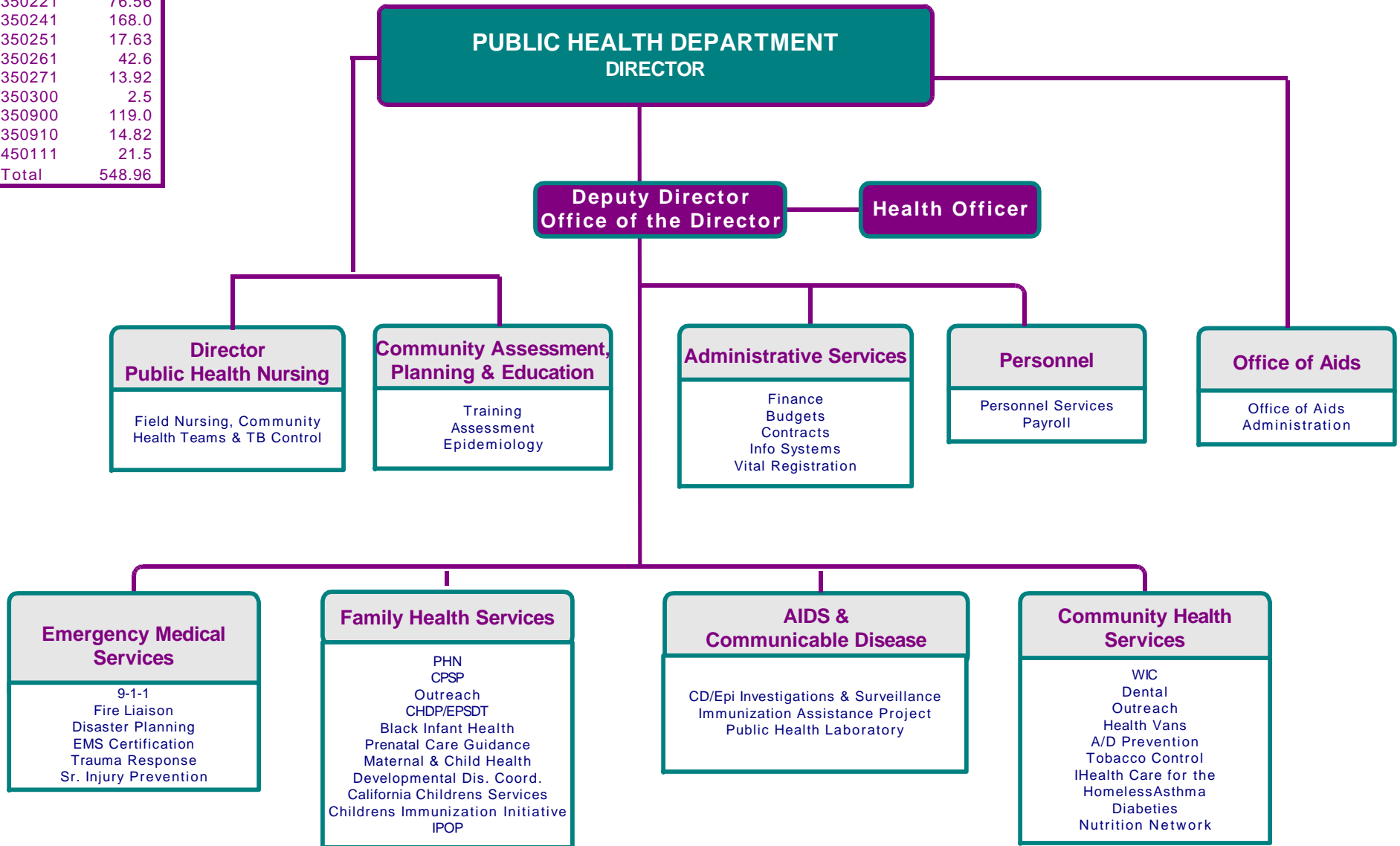
Function & Organization Chart - FY 2003-2004

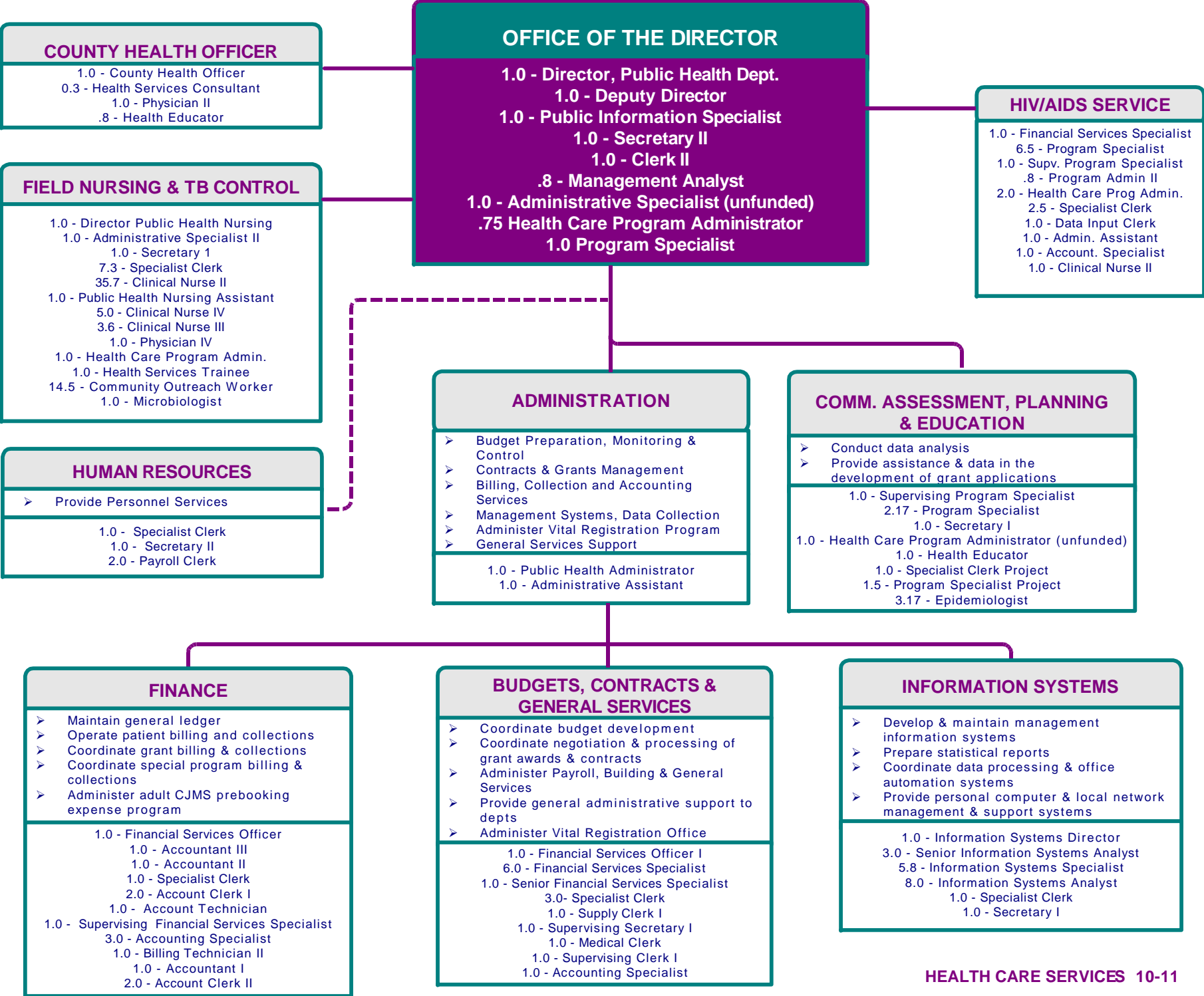


MISSION STATEMENT:

The mission of the Alameda County Public Health Department is to work in partnership with the community to ensure the optimal health and well being of all people through a dynamic and responsive process, respecting the diversity of the community and challenging us to provide for present and future generations.

TOTAL FTEs	
Budget Unit#	Budgeted Positions
350201	72.43
350221	76.56
350241	168.0
350251	17.63
350261	42.6
350271	13.92
350300	2.5
350900	119.0
350910	14.82
450111	21.5
Total	548.96





DIVISION OF COMMUNICABLE DISEASE CONTROL AND PREVENTION

DIRECTOR

1.0 - Physician V

ADMINISTRATIVE SUPPORT SERVICES

1.0 - Accredited Records Technician
 1.0 - Administrative Assistant
 1.0 - Program Financial Specialist
 1.0 - Financial Services Specialist II
 1.0 - Accounting Specialist
 1.0 - Staff Services Assistant (unfunded)
 1.0 - Medical Clerk

DEPUTY DIRECTOR

0.5 - Clinical Nurse IV (unfunded)
 0.5 - Clinical Nurse V

Disease Surveillance & Epi Investigations

1.0 - Clinical Nurse V
 1.0 - Secretary I
 3.3 - Clinical Nurse II
 1.3 - Community Outreach Worker
 2.0 - Public Health Investigator
 5.0 - Specialist Clerk
 1.0 - Senior Program Specialist
 1.0 - Medical Clerk
 1.0 - Physician SAN (unfunded)
 5.0 - Public Health Investigator
 .7 - Public Health Investigator (Project)

Education and Prevention

0.5 - Clinical Nurse IV
 0.5 - Clinical Nurse V
 2.0 - Specialist Clerk
 2.5 - Clinical Nurse II
 2.1 - Program Specialist
 1.0 - Community Health Outreach Worker
 1.0 - Supervising Program Specialist
 4.0 - Public Health Investigator
 1.0 - Sr. Program Specialist
 1.0 - Information System Analyst

Public Health Laboratory

1.0 - Chief, Public Health Lab
 1.0 - Data Input Clerk
 6.0 - Microbiologist (1.8 unfunded)
 3.0 - Senior Microbiologist (1.5 unfunded)
 1.0 - Specialist Clerk
 2.0 - Laboratory Assistant III (1 unfunded)
 1.0 - Health Services Trainee (unfunded)
 1.0 - Billing Technician
 1.0 - Laboratory Technician (unfunded)
 1.0 - Microbiologist SAN (unfunded)

FAMILY HEALTH SERVICES (Dept. 413)

**1.0 CHILDRENS MEDICAL SERVICES
ADMINISTRATOR**

**CHILDREN'S MEDICAL SERVICES
CCS-ADMIN/INTENSIVE
CASE MGMT
CCS/HIV/CCS DTT/MTU - ADMIN.**

1.0 - Senior Program Specialist
1.0 - Info Systems Analyst
1.0 - Clerk II
1.0 - Lead Clerk
5.0 - Medical Clerk
9.0 - Specialist Clerk
1.0 - Secretary II
2.0 - Account Clerk
1.0 - Accounting Tech.
1.0 - Patient Record Supervisor
1.5 - Physician II
13.3 - Clinical Nurse II
2.0 - Clinical Nurse III
1.0 - Clinical Nurse IV
1.0 - Chief Therapist
1.0 - Medical Social Worker II
3.0 - Social Worker III
2.0 - Physical Therapy Aide
13.0 - Cerebral Palsy Therapist (Occ)
14.0 - Cerebral Palsy Therp (Phys)
3.0 - Supervising Therapist
10.0 - Medical Records Technician
1.0 - Billing Technician II
0.5 - Asst. Chief Therapist
4.0 - Senior Therapist
1.0 - Health Care Program Administrator
1.0 - Clinical Nurse V
0.5 - Program Specialist
1.5 - Information Systems Specialist
1.0 - Patient Services Technician
1.0 - Physician III
1.0 - Community Outreach Worker (unfunded)

CHDP/EPSTD/FIELD NURSING/FC

5.3 - Specialist Clerk
1.3 - Physician II SAN
1.0 - Clinical Nurse IV
12.0 - Clinical Nurse II
1.0 - Medical Social Worker II
2.0 - Community Health Outreach Worker
2.0 - Program Specialist
1.0 - Clerk II
2.0 - Medical Clerk
1.0 - Supervising Clerk II
1.0 - Accounting Specialist
1.0 - Clinical Nurse III
0.3 - Clinical Nurse V
.71 - Health Services Consultant

**MATERNAL, CHILD &
ADOLESCENT HEALTH**

3.5 - Program Specialist
1.0 - Specialist Clerk
1.0 - Physician IV
2.0 - Community Health Outreach Worker
1.0 - Secretary I
0.1 - Clinical Nurse IV
0.5 - Clinical Nurse II
0.1 - Physician II
1.0 - Nutritionist
2.6 - Health Care Program Administrator
2.3 - Sr. Program Specialist
1.6 - Administrative Services Assistant
6.0 - Health Services Trainee

**DEVELOPMENTAL
DISABILITIES**

1.0 - Developmental Disabilities
Coordinator

BLACK INFANT HEALTH

6.0 - Clinical Nurse II
0.25 - Clinical Nurse IV
5.0 - Community Outreach
Worker

IPOP

2.1 - Sr. Program Specialist
1.0 - Administrative Assistant
1.5 - Specialist Clerk
1.0 - Health Services Trainee
0.5 - Senior Financial Services Specialist
0.5 - Program Specialist
1.5 - Program Specialist (Project)
1.1 - Health Services Consultant
0.5 - Medical Social Worker II
0.5 - Marriage/Family Child Counselor II

COMMUNITY HEALTH SERVICES

ADMINISTRATION

1.0 - Community Health Services Administrator
 1.0 - Health Care Program Administrator
 0.5 - Administrative Assistant
 1.0 - Program Administrator II
 0.5 - Program Financial Specialist
 0.8 - Health Services Consultant

HEALTH CARE FOR THE HOMELESS (414 & 725)

- Case Management
- Mobile Health Van Outreach/ Services
- Move-in Assistance
- Support Services
- Crisis Counseling
- Recovery Services/Referrals
- Primary Care
- Housing Assistance
- Eviction Prevention Services/ Referrals
- Food Vouchers

1.0 - Health Care Program Administrator II
 4.3 - Social Worker II
 1.0 - Program Financial Specialist
 0.5 - Midlevel Practitioner (SAN)
 1.01 - Mobil Health Services Sup. Worker
 1.0 - Administrative Assistant
 1.0 - Midlevel Practitioner
 1.0 - Senior Program Specialist
 1.0 - Specialist Clerk

WIC (725)

- Nutrition education and supplemental foods to over 18,000 low-income women, infants and children monthly
- Nutrition services to Alameda County residents
- Special services to the two Medi-Cal managed health care plans

1.0 - Health Care Program Administrator (unfunded)
 1.0 - Health Care Program Admin. II
 9.0 - Specialist Clerk
 1.0 - Administrative Specialist
 4.0 - Senior Nutritionist
 5.6 - Nutritionist
 12.75 - Nutrition Assistant
 1.0 - Senior Program Specialist

TOBACCO CONTROL PROGRAM (734)

- Program Advocacy
- Community Outreach & Education
- Training & Technical Assistance
- Policy Development & Coordination
- Information & Referral
- Research

0.8 - Health Care Program Administrator
 2.0 - Program Specialist (0.4 unfunded)
 1.1 - Health Services Consultant
 0.8 - Health Services Trainee
 0.8 - Administrative Specialist

HOMELESS FAMILIES (414 & 725)

1.0 - Administrative Assistant
 2.0 - Social Worker II
 1.0 - Senior Program Specialist

DIABETES GRANT (734)

1.0 - Management Analyst
 3.0 - Program Specialist
 1.0 - Senior Program Specialist
 1.0 - Specialist Clerk
 1.0 - Clinical Nurse II
 1.0 - Health Educator
 1.0 - Social Worker II

HOMELESS FAMILIES/SAFAH (725)

1.0 Social Worker

NUTRITION SERVICES

7.25 - Nutritionist
 6.50 - Nutrition Assistant
 4.0 - Specialist Clerk
 1.0 - Administrative Specialist
 1.0 - Administrative Assistant
 1.0 - Account Clerk II
 1.0 - Accounting Technician

ASTHMA GRANT (725)

1.0 - Program Financial Specialist
 0.5 - Specialist Clerk
 1.75 - Medical Social Worker II

DENTAL (414 & 725)

- School-based SBIII Dental Disease Prevention Education
- Community-based Health Education & Outreach
- Coordination of school-based Health Services (Healthy Start)
- Information & Referral
- Program Consultation & Technical Assistance

1.0 - Dental Administrator
 1.0 - Senior Program Specialist
 1.0 - Specialist Clerk
 1.0 - Dental Hygienist
 4.25 - Community Health Outreach Worker
 2.5 - Program Specialist
 1.0 - Dental Assistant
 0.75 - Dental Assistant (Project)

LEGISLATIVE COUNCIL (414)

- Maintain a forum for discussion of public health policy issues legislative advocacy
- Serve as a clearinghouse and support network for the PHD and community groups involved with public health-related legislative advocacy
- Develop and promote legislative proposals to support PHD priority areas
- Track public health-related legislation in the State Legislature and Federal Congress

1.0 - Management Analyst

EMERGENCY MEDICAL SERVICE DISTRICT

