

# CalAIM: Justice Involved Updates

4/19/2023

Community Corrections Partnership Meeting



# What is CalAIM?

California Advancing and Innovating Medi-Cal (CalAIM) is the state's multi-year plan to **transform** the Medi-Cal program

## CalAIM Goals:

Identify and manage comprehensive needs through **whole person care approaches** and **social drivers of health**.

Improve **quality outcomes**, reduce **health disparities**, and transform the delivery system through value-based initiatives, modernization, and **payment reform**.

Make Medi-Cal a more **consistent and seamless system** for enrollees to navigate by reducing complexity and increasing flexibility.



# 1115 Demonstration Request Approved by CMS

- On January 26, 2023, California became the **first state** in the nation [approved](#) to offer a targeted set of Medicaid services to youth and adults in state prisons, county jails, and youth correctional facilities for up to 90 days prior to release.
- With its 1115 demonstration, California will directly test and evaluate its expectation that targeted pre-release services to **Medi-Cal eligible individuals** will avert the unnecessary use of inpatient hospitals, psychiatric hospitals, nursing homes, emergency departments and other forms of costly and inefficient care that otherwise would be paid for by Medi-Cal.



# Justice-Involved Reentry Initiative Goals

The demonstration approval represents a first-of-its-kind section initiative, focused on improving care transitions for incarcerated individuals.

With the implementation of this demonstration, DHCS hopes to achieve the following:



**Advance health equity:** The issue of poor health, health outcomes, and death for incarcerated people is a health equity issue because Californians of color are disproportionately incarcerated—including for mental health and SUD-related offenses. These individuals have considerable health care needs but are often without care and medications upon release.



**Improve health outcomes:** By implementing this initiative, California aims to provide a targeted set of services in the pre-release period to establish a supportive community reentry process, help individuals connect to physical and behavioral health services upon release, and ultimately improve physical and behavioral health outcomes.

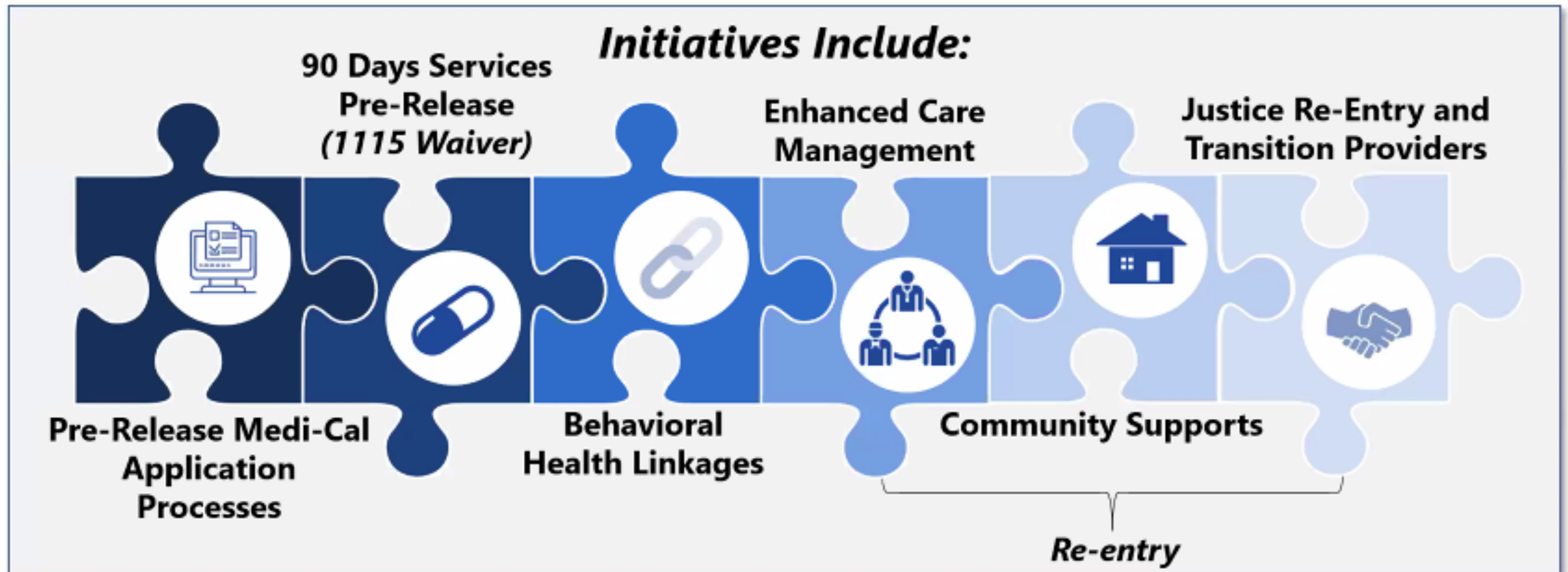


**Serve as a model for the rest of the nation:** California is the first state to receive approval for this initiative. We hope our model will serve as a blueprint for the dozen additional states with pending justice-involved 1115 waivers.

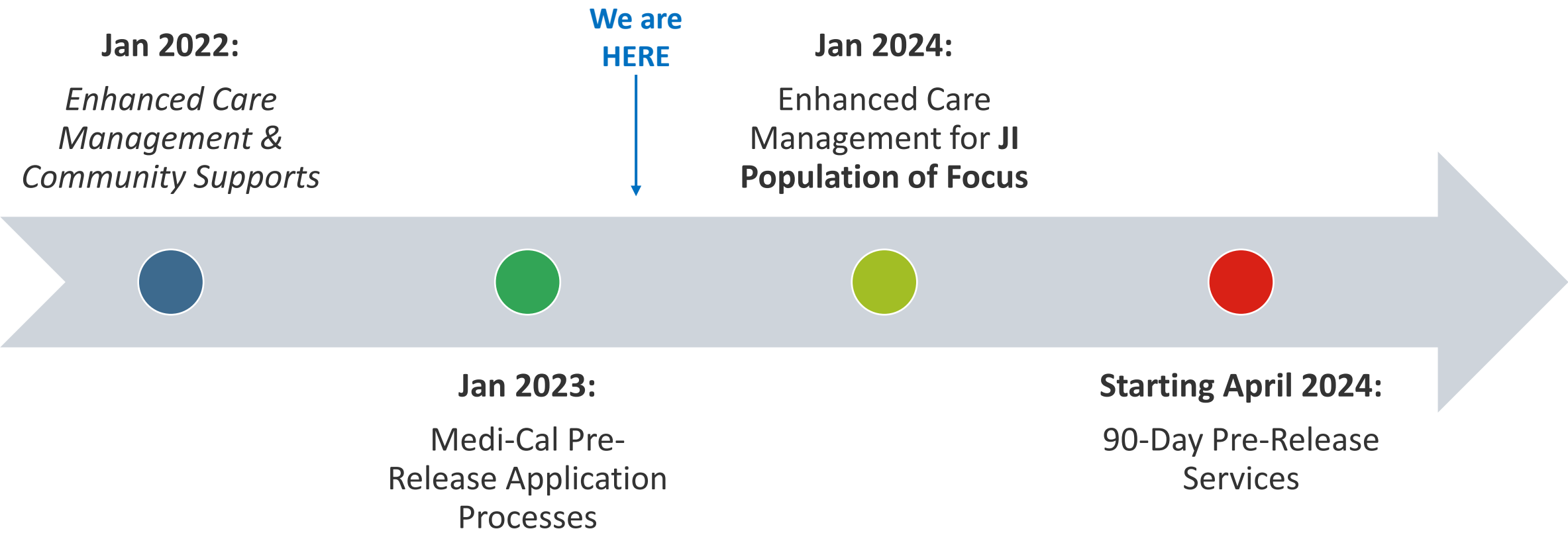
*Source: 2/23/2023 DHCS CalAIM Justice Involved Advisory Group Meeting*

# The Justice-Involved Reentry Initiative is One Component of the CalAIM Justice-Involved Initiative

CalAIM justice-involved initiatives support justice-involved individuals by providing key services pre-release, enrolling them in Medi-Cal coverage, and connecting them with behavioral health, social services, and other providers that can support their re-entry.



# DHCS Implementation Timelines\*



*\*Subject to change*

# Deep Dive: Medi-Cal Pre-Release Application Process

Focused on processes to screen for Medi-Cal eligibility and current enrollment and support individuals in applying for coverage, in coordination with the county social services department (SSD).

## Readiness Elements

- ☑ **Screening** process and support model to screen for current Medi-Cal enrollment and eligibility in coordination with County SSD.
- ☑ **Application support** process to support individuals in applying for Medi-Cal coverage and submitting an application.
- ☑ **Unsuspension** process and data sharing capability to notify the SSD of the individual's release to reactivate coverage

Note: all elements in this focus area are minimum requirements.

## Screening and application timelines will vary based on facility type:

- » **County jails and youth correctional facilities** will be expected to implement processes that begin at or close to intake.
- » **State prisons** will be expected to begin pre-release enrollment prior to 135 days pre-release in order to ensure eligible individuals have applications completed in time to receive the full 90 days of service.

*Pre-Decisional Draft*



# Deep Dive: 90-Day Pre-Release Services

Medi-Cal-eligible individuals who meet the pre-release access screening criteria may receive targeted Medi-Cal pre-release services in the 90-day period prior to release from correctional facilities. DHCS developed detailed definitions for qualifying criteria, based on extensive stakeholder feedback (See Appendix).

## Medi-Cal Eligible:

- Adults
- Parents
- Youth under 19
- Pregnant or postpartum
- Aged
- Blind
- Disabled
- Current children and youth in foster care
- Former foster care youth up to age 26

## CHIP Eligible:

- Youth under 19
- Pregnant or postpartum



## Criteria for Pre-Release Medi-Cal Services

*Incarcerated individuals must meet the following criteria to receive in-reach services:*

- ✓ Be part of a **Medicaid or CHIP Eligibility Group**, and
- ✓ Meet **one** of the following health care need criteria (Adults)
  - Mental Illness
  - Substance Use Disorder (SUD)
  - Chronic Condition/Significant Clinical Condition
  - Intellectual or Developmental Disability (I/DD)
  - Traumatic Brain Injury
  - HIV/AIDS
  - Pregnant or Postpartum

**Note:** *All incarcerated youth are able to receive pre-release services and do not need to demonstrate a health care need.*





# Deep Dive: 90-Day Pre-Release Services

The pre-release services authorized under the Justice-Involved Reentry Initiative include the following services currently covered under DHCS's Medicaid and CHIP State Plans. DHCS worked extensively with stakeholders to develop definitions for each of the covered services (See Appendix).



- Reentry case management services;
- Physical and behavioral health clinical consultation services provided through telehealth or in-person, as needed, to diagnose health conditions, provide treatment, as appropriate, and support pre-release case managers' development of a post-release treatment plan and discharge planning;
- Laboratory and radiology services;
- Medications and medication administration;
- Medications for addiction treatment (MAT), for all Food and Drug Administration-approved medications, including coverage for counseling; and
- Services provided by community health workers with lived experience.

In addition to the pre-release services specified above, qualifying members will also receive **covered outpatient prescribed medications and over-the-counter drugs** (a minimum 30-day supply as clinically appropriate, consistent with the approved Medicaid State Plan) and **durable medical equipment (DME)** upon release, consistent with approved state plan coverage authority and policy.

11



# Enrolling in a Managed Care Plan for Post-Release Services

As a reminder, targeted pre-release services will be provided **fee-for-service**. To ensure smooth re-entry, continuity of care management relationships, and access to providers as soon as possible, DHCS intends to develop new processes for individuals eligible for pre-release services who are not currently enrolled in a managed care plan (MCP). This process will: (1) **auto-assign** individuals into a MCP (with choice period post assignment); and (2) establish current month enrollment (i.e., an individual would be enrolled in managed care plan beginning the first of the month in which they are released).

**DHCS will auto-assign Medi-Cal enrolled individuals into a MCP in their county of residence listed on their Medi-Cal application.**

- DHCS will use existing processes to auto-assign individuals into an MCP, including prior plan assignment and plan assignment of family members. If neither of these two criteria are successful, the individual will be placed into a plan using the default algorithm.
- Individuals will be sent a confirmation letter with the plan assignment and information on how to change plans, as needed. Welcome packet from the MCP, including information on how to access the provider directory and member handbook, will be sent to the individual's county of residence address.

**Plan assignments will not be disrupted for existing MCP enrollees who remain in the same counties.**



# Pre- and Post-Release Care Management to Support Re-Entry

Correctional facilities and community-based care managers will play a key role in re-entry planning and coordination, including notifying implementation partners\* of release date, if known, supporting pre-release warm handoffs, facilitating behavioral health linkages, and dispensing medications and/or DME upon reentry.

Enhanced Care Management (ECM)	Behavioral Health Linkages	Warm Handoff Requirement
<p>Individuals who meet the CalAIM pre-release service access criteria will qualify for ECM Justice Involved Population of Focus and <b>will be automatically eligible for ECM</b> until a reassessment is conducted by the managed care plan (MCP), which may occur up to six months after release.</p>	<p>To achieve continuity of treatment for individuals who receive behavioral health services while incarcerated, DHCS will require correctional facilities to:</p> <ul style="list-style-type: none"> <li>» <b>Facilitate referrals/linkages to post-release behavioral health providers</b> (e.g., non-specialty mental health, specialty mental health, and SUD).</li> <li>» <b>Share information with the individual's health plan</b> (e.g., MCPs, SMHS, DMC-ODS) or program (i.e., DMC).</li> </ul>	<p>Prior to release, the pre-release care manager must do the following:</p> <ul style="list-style-type: none"> <li>» <b>Share transitional care plan</b> with the post-release care manager and MCP.</li> <li>» <b>Schedule and conduct a pre-release care management meeting</b> (in-person or virtual) with the member and pre- and post-release care managers (if different) to:               <ul style="list-style-type: none"> <li>» Establish a trusted relationship.</li> <li>» Develop and review care plan with member.</li> <li>» Identify outstanding service needs.</li> </ul> </li> </ul>

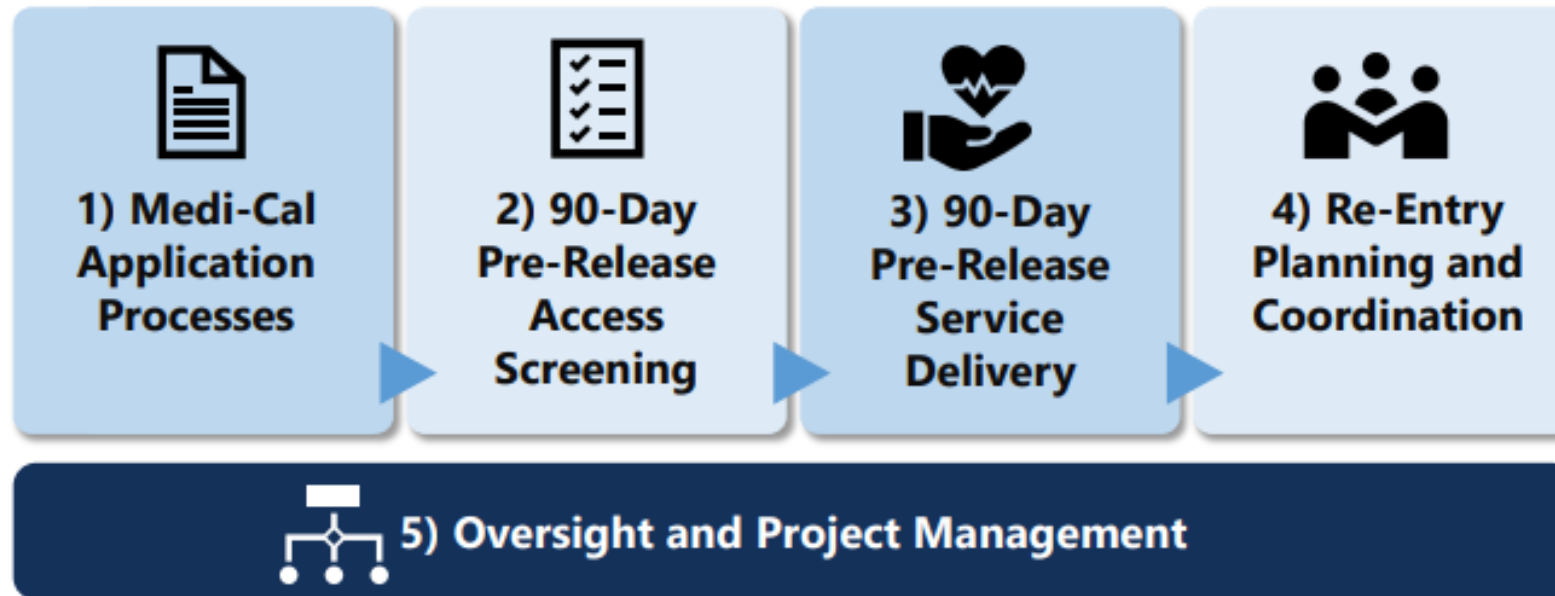
\*Implementation partners include social services departments, post-release care manager (if different from pre-release care manager, MCPs, and county behavioral health agencies



# Correctional Facility Readiness Assessment Approach

As a condition of the Demonstration, all prisons, jails and youth correctional facilities will be required to demonstrate readiness to participate in the justice-involved initiative prior to going live with pre-release services.

DHCS will launch a readiness assessment process that will focus on five key areas needed to operationalize 90-day pre-release services:



*Note: An abbreviated readiness process will also be established for County social service departments to ensure eligibility and enrollment processes facilitate pre-release services.*



# Resources

- **DHCS CalAIM Justice Involved Homepage:** [Justice \(ca.gov\)](#)
- **CalAIM Justice-Involved Advisory Group**
  - Meetings are open to the public and posted at the website above
  - 2/23/2023 slidedeck: [California Advancing and Innovating Medi-Cal \(CalAIM\) Justice-Impacted Advisory Group](#)
- [CalAIM Enhanced Care Management \(ECM\) Policy Guide](#)
- [DHCS-Community-Supports-Policy-Guide.pdf \(ca.gov\)](#)
- **PATH Collaborative Planning – led by Blue Path in Alameda County**
  - Register here - [PATH | TPA \(ca-path.com\)](#)

