



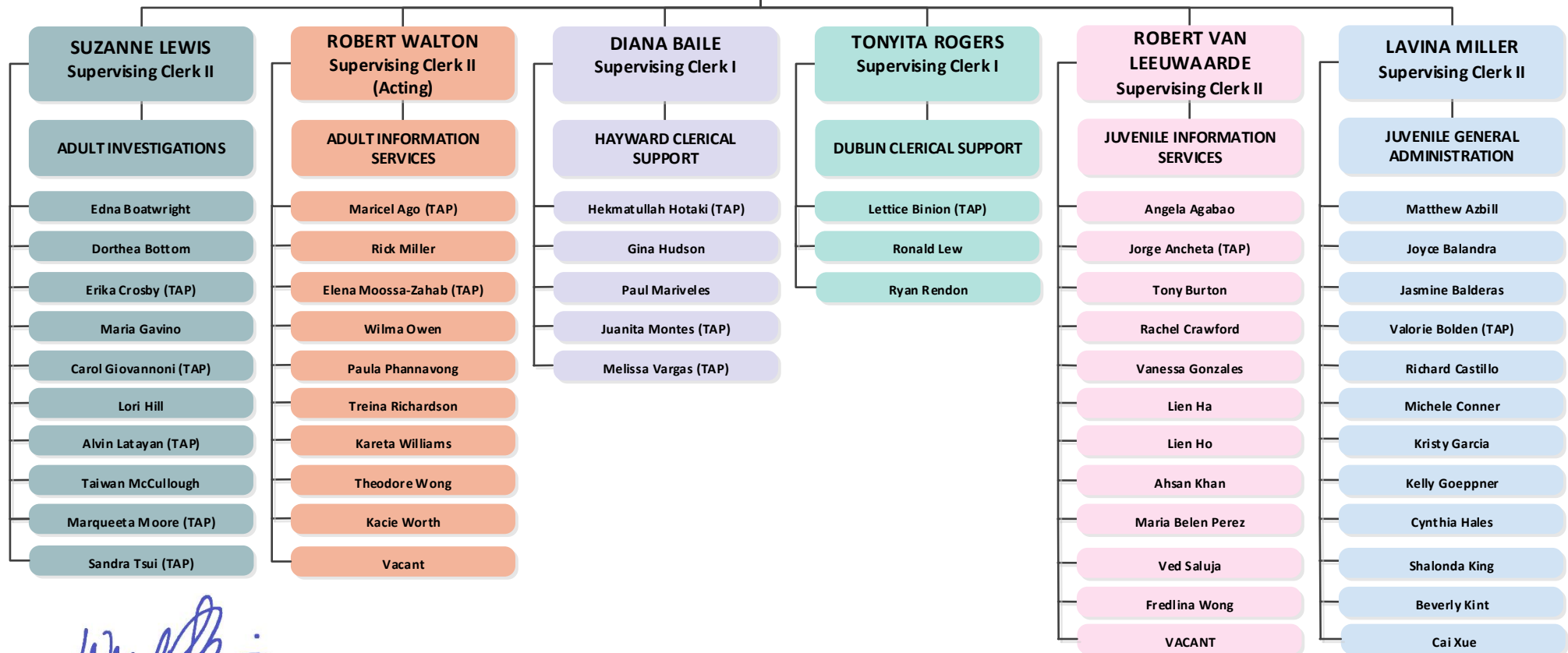
Alameda County Probation Department
ADMINISTRATIVE SUPPORT SERVICES



WENDY STILL, MAS
CHIEF PROBATION OFFICER

KAREN BAKER
ASSISTANT CHIEF PROBATION
OFFICER

MARGARET TOLBERT
Supervising Administrative Specialist



Wendy Still, MAS
Chief Probation Officer

Date: July 23, 2019