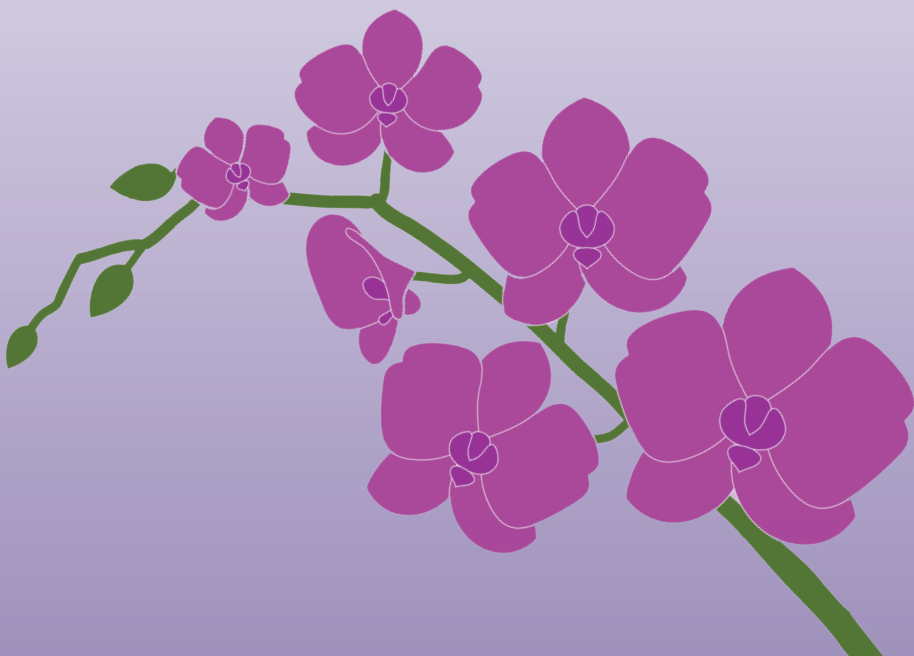


*28<sup>th</sup>* Anniversary  
ALAMEDA COUNTY  
*W*omen's Hall of Fame

---

Saturday, March 25, 2023

Greek Orthodox Cathedral  
4700 Lincoln Avenue, Oakland



*28<sup>th</sup>* Anniversary  
ALAMEDA COUNTY  
*W*omen's Hall of Fame

---

## **Program**

### **Welcome & Opening Remarks**

Susan S. Muranishi

### **Acknowledgements**

### **Alumni Recognition**

### **Mistress of Ceremonies**

Sherry Hu

### **Lunch**

### **Awards Ceremony**

### **Community Partner Grants**

### **Youth Scholarship Recognition**

### **Closing Remarks**



## **Alameda County Board of Supervisors**

President Nate Miley, District 4

Vice President Dave Haubert, District 1

Lena Tam, District 3

Keith Carson, District 5

## **Women's Hall of Fame Co-Chairs**

Susan S. Muranishi, Alameda County Administrator

Nina Senn, Chair, Commission on the Status of Women

## **Alameda County Commission on the Status of Women**

Nina Senn

Aliza Kazmi

Erin Scott

Orly Amey

Kathryn Lybarger

Aida Sizova

Shanta Franco-Clausen

Yasi Safinya-Davies

Megan Sweet

Marie Gilmore

Courtney Welch

## **Judges**

Ana Apodaca

Ophelia Basgal

Dee Dee Brantley

Sherry Hirota

April Luckett-Fahimi

Nina Senn

# 2023 Inductees

**Maya Shiroyama**

Business & Professions

**Anna Wang**

Community Service

**Angela Wellman**

Culture & Art

**Elizabeth Shaughnessy**

Education

**David Scott**

Emerging Leader

**Elsa Ortiz**

Environment

**Dr. Stephanie Y. Brown**

Health

**Corrina Gould**

Justice

**Patricia Hendricks**

Non-Traditional Careers

**Zuhal Bahaduri**

Philanthropy

**Dr. Tanya Moore**

Science, Technology, Engineering

**Darlene Vendegna**

Sports & Athletics

**Noor Dharni**

Youth



## Maya Shiroyama

Business & Professions

Maya Shiroyama is the retired owner of Oakland's Kitazawa Seed Company. Since 1917, Kitazawa has provided seeds for growing vegetables for traditional Asian dishes. Over twenty years ago Ms. Shiroyama kept Kitazawa's doors from closing, preserving the sole source for growing vegetables for many Japanese American families and making a lasting investment in the culture and history of her Asian American heritage and community.



## Anna Wang

Community Service

Anna Wang is the co-founder and vice president of Friends of Children with Special Needs, an organization founded over 25 years ago by parents of children with developmental disabilities. Ms. Wang has devoted her life and career to connecting families with the support, care, and resources needed to live healthy and happy lives and is a champion for health and equity for people with disabilities.



## Angela Wellman

Culture & Art

Angela Wellman founded the Oakland Public Conservatory of Music. The Conservatory centers the Black experience in the development of American musical culture. Ms. Wellman leads a coalition to build a national network of public conservatories with a unified philosophy of equity, belonging, and empathy through music education.



## Elizabeth Shaughnessy

### Education

Elizabeth Shaughnessy, two-term Berkeley School Board member and global chess champion, founded the Berkeley Chess School in 1982. Her love of the game propelled her to open the chess school which now serves over 7,000 youth annually. For over forty years Ms. Shaughnessy has been building the self-esteem and creative minds of youth by teaching the strategy and fun of the game of chess.



## Davida Scott

### Emerging Leader

Davida Scott is a teacher at the Hayward Adult School. Emboldened by the grief of losing students to gun and gang violence, she founded the Raising Leaders program to provide at-risk youth with the support they need to thrive. Through life skills workshops and internships, Ms. Scott has changed the trajectory of hundreds of young lives. She has dedicated her career to raising up an inclusive workforce for our community and nation.



## Elsa Ortiz

### Environment

Elsa Ortiz championed environmental policy while serving four terms on the AC Transit Board of Directors. Ms. Ortiz led efforts to connect Alameda County communities to reliable, affordable, and sustainable transit services, including advancing policies that reduce carbon emissions, promote clean energy, and ensure equity-based programs that increase transit access to communities that need it most.



## **Dr. Stephanie Y. Brown**

Health

Dr. Stephanie Y. Brown is a board-certified Emergency Medicine Physician practicing at Alta Bates Summit Medical Center in Oakland and Berkeley. She is the Clinical Lead for the Sutter Health Institute for Advancing Health Equity. At the Institute, Dr. Brown contributes her clinical and population health expertise to advocacy, research, education, and innovation efforts to improve the health outcomes for vulnerable people across Northern California.



## **Corrina Gould**

Justice

Corrina Gould is the Tribal Chair for the Confederated Villages of Lisjan Nation in the Bay Area, and co-founder of the Sogorea Te' Land Trust, an urban Indigenous women's community organization working to return Indigenous land to Indigenous people. Ms. Gould is an activist and organizer that has preserved and protected the ancient burial sites of her ancestors in the Bay Area for decades.



## **Patricia Hendricks**

Non-Traditional Careers

Patricia Hendricks Sensei, 7th Dan Shihan Aikikai, traveled the world learning and teaching Aikido, a Japanese style of martial art that promotes health, well-being, and self-defense. She studied Aikido in Iwama, Japan with renowned Saito Sensei Shihan. She served as Saito Sensei's representative for the United States and runs the Iwama division in the California Aikido Association. Hendricks Sensei founded Aikido of San Leandro in 1984 and has produced aikido experts worldwide.





## Zuhal Bahaduri

Philanthropy

Zuhal Bahaduri is a healthcare business analyst, founder of a mental health awareness brand called Breathe, and co-founder of The Five Pillars Organization, a volunteer-led group established to ensure a welcoming and dignified resettlement of Afghan refugees to Alameda County. Ms. Bahaduri is devoted to ensuring newcomer families are connected to critical health, housing, education, and other support services needed to feel safe, loved, and connected to their new environment.



## Dr. Tanya Moore

Science, Technology, Engineering

Dr. Tanya Moore is committed to broadening participation in STEM fields for BIPOC women. She developed a national conference to educate and support minority women in STEM fields in collaboration with a team of women mathematicians. Dr. Moore founded Intersecting Lines, a company using creative approaches to empower leaders to use data science, statistics, and technology to drive business decisions. Her love of math and science has influenced many young women to enter the field and succeed.



## Darlene Vendegna

Sports & Athletics

Darlene Vendegna has coached Bay Area sports for decades and is Oakland's USA Pickleball Association Ambassador. She saw that COVID restrictions had many feeling isolated, so she started a pickleball club at Bushrod Park in Oakland that introduced hundreds of residents to the sport. Ms. Vendegna's sports leadership has provided mental, emotional, and physical support to countless residents of Alameda County and beyond.





## **Noor Dharni**

### **Youth**

Noor Dharni is a high school senior passionate about breaking down stigmas surrounding mental health. Inspired by her own experiences, Noor became a mental health advocate and is now a voice for youth across the country, dedicated to raising awareness and access to resources for youth with mental health issues. Noor plans to pursue the field of Psychology in her undergraduate studies.



## **Community Partners**

**Davis Street Family Resource Center**

**Diversity in Health**

**Lend a Hand Foundation**

**Progressive Transitions**

# Presenting Sponsor



## CONGRATULATIONS 2023 INDUCTEES!

Kaiser Permanente is a proud supporter of the Alameda County Women's Hall of Fame.

At Kaiser Permanente we make it our mission to help build healthy communities, and we couldn't do it alone. We'd like to extend our heartfelt appreciation to the 2023 Women's Hall of Fame inductees for their contributions to our community.

**To learn more, visit [kp.org](https://kp.org) today.**

KAISER PERMANENTE®  **thrive**

## Gold Sponsors



promoting equity, advocacy and access

## Gold Sponsors



# FIRST 5



## Silver Sponsors



## Silver Sponsors



HansonBridgett



## Bronze Sponsors

Backstrom McCarley Berry

Capital Program Innovations

Full Moon Strategies

K&H Printers - Lithographers

MetLife

# Special Thanks





# Alameda County Department Sponsors

David Haubert, Board of Supervisors, District 1

Lena Tam, Supervisor, District 3

Keith Carson, Supervisor, District 5

Phong La, Assessor

Yesenia Sanchez, Sheriff-Coroner

Melissa Wilk, Auditor-Controller/Clerk-Recorder

Stephen Baiter, East Bay Economic Development Alliance

Cindy Chadwick, County Librarian

Colleen Chawla, Director, Health Care Services Agency

Marcus Dawal, Chief Probation Officer

Tim Dupuis, Chief Information Officer and Registrar of Voters

Andrea Ford, Director, Social Services Agency

Kimberly Gasaway, Director, General Services Agency

William McDonald, Fire Chief

Phyliss Nance, Director, Department of Child Support Services

Sandi Rivera, Director, Community Development Agency

Margarita Zamora, Acting Director, Human Resource Services

Donna Ziegler, County Counsel

Pat O'Connell, Retired Auditor-Controller



[whof.acgov.org](https://whof.acgov.org)