

Alameda County Arts Commission

Cherryland Community Center

Public Art Program

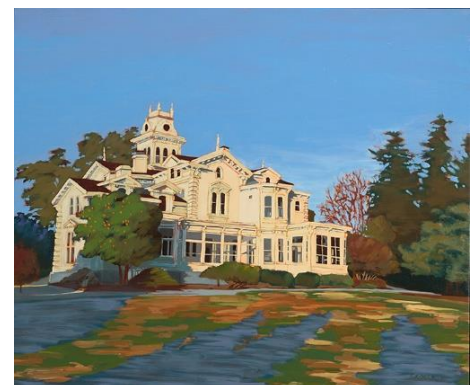
Overview

The construction of the Cherryland Community Center has a public art component provided through the County's Percent for Art Ordinance managed by the Office of the Alameda County Arts Commission. Two types of public art are planned for the Center. Artist Debra Stuckgold was selected to create designs that will be cut into metal panels that are part of the building's architectural canopies covering the entrances and many of the exterior walkways. The cut metal designs feature silhouetted images of cherry tree branches and blossoms.

Additionally, four artists were selected to create artwork that will be framed and permanently installed throughout the public spaces of the Center. Artists Jeffrey Hantman, Yan Inlow, Karen Kramer, and Fernando Reyes each created a small series of artwork inspired by Cherryland's community, history, gardens, and the Meek Estate.



Preliminary sketch of a section of the design which will be cut in metal for the community center's architectural canopy by artist Debra Stuckgold.



Images from left to right:

- Fernando Reyes, *Shadows Crossing Meek Mansion Estate*, Oil on wood panel
- Karen Kramer, *Harvest Bounty*, Watercolor on paper
- Yan Inlow, *Butterfiles Enjoying Poppies on a Spring Day #1*, Fiber art,
- Jeffrey Hantman, *B A C*, Mixed media on wood panel

Background

The artists were selected through an open, competitive process that took place in 2014. A selection committee including community members, representatives from the County and HARD, and local artists served on the committee. Community involvement is at the core of this program. In April 2014, 30 community members attended a roundtable event with a group of artists who were invited to make proposals for the Center. The community members shared their thoughts about Cherryland and hopes for the future artwork. In the Summer 2014, 80 community members submitted comments about the artists' proposals. The County's Public Art Advisory Committee and the Members of the Alameda County Arts Commission approved the final five artists chosen by the selection committee. The Alameda County Board of Supervisors approved Stuckgold's contract in April 2018.

Get Connected & Stay Informed!

Email artscommission@acgov.org to be added to the Arts Commission's email list about this project.

About the Alameda County Arts Commission & the County's Public Art Ordinance

The Arts Commission was established in 1965 by the Alameda County Board of Supervisors. The Members of the Arts Commission govern the services of the Commission and act in an advisory capacity to the Board of Supervisors concerning the arts and the cultural environment in the County. The Arts Commission is comprised of fifteen community members appointed by the Board of Supervisors, and seven ex-officio members representing County Departments and leading educational and cultural institutions. The Arts Commission's programs are managed by a staff of four full-time County employees.

The Alameda County Arts Commission is dedicated to improving the quality of life in Alameda County by nurturing a thriving environment for the arts; promoting economic opportunities for Alameda County's artists and arts organizations through services such as arts funding, public art, and arts education; encouraging public participation in the arts and actively advocating for the arts. The Arts Commission supports all art forms including visual, performing, literary, traditional, and media arts. All of the Arts Commission's services are based on the belief that the arts and creativity are an essential part of every successful and thriving community.

The Alameda County Board of Supervisors established Alameda County's "Percent for Art" ordinance in 1994. The Public Art Program provides for public art elements connected to capital improvement projects undertaken by the County. By ordinance, the Arts Commission Staff are responsible for the management and administration of the Public Art Program. All aspects of the program are conducted in-house by the Arts Commission Staff. The goals of the Public Art Program are to generate positive, uplifting art experiences that create a sense of place, foster involvement with and respect for the regional community and users of the buildings, and promote the economic vitality of the County. For each site, unique artworks are created by professional artists and are integrated into the design of the structure or landscaping. Artwork is purchased or commissioned through an open, competitive process. The Public Art Program is administered with guidance from the Public Art Advisory Committee, a body of nine appointed community members.