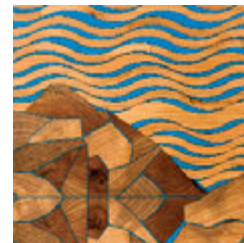
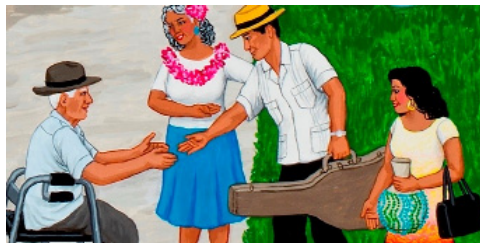
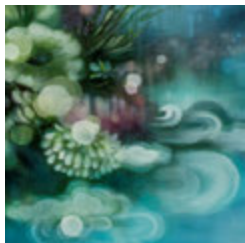
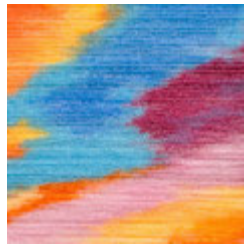
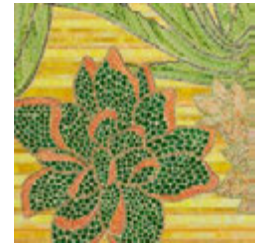
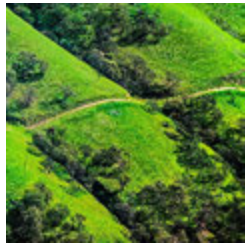


COUNTY OF ALAMEDA'S
ACUTE TOWER REPLACEMENT PROJECT
PUBLIC ART PROGRAM

Acute Care Tower



FEATURED ARTISTS

NORA AKINO
ROB BADGER
MICHAEL CUTLIP
GINA DOMINGUEZ
CARMEN LOMAS GARZA
NANCER J. LEMOINS
HUNG LIU
SUSAN LONGINI

AJUAN MANCE
ELISE MORRIS
BARRIE ROKEACH
JESSICA SABOGAL
MATTHEW SCHEATZLE
TIFFANY SCHMIERER
JENN SHIFFLET
OWEN J. SMITH

ABOUT THE PUBLIC ART PROGRAM

The County of Alameda's Acute Tower Replacement Project's Public Art Program includes multiple public art projects throughout Highland Hospital's new facilities. The primary goal of the Public Art Program is to commission high-quality, original artwork that helps create a positive, supportive, and healing environment for the patients, their families, visitors, and staff. The artwork for the new Acute Care Tower celebrates the natural landscape and the diverse communities of this region. Sixteen artists from Alameda County and the Bay Area created over 50 artworks for the new Acute Care Tower. The artists were selected through an open, competitive process by a selection committee comprised of Alameda Health System and Highland staff, local artists, and community members. To learn more about the artists and their artwork, view the short videos at <http://tinyurl.com/youtubeACAC>.

The Public Art Program is funded through the County's Percent for Art Ordinance managed by the Office of the Alameda County Arts Commission on behalf of the Alameda County Board of Supervisors.

Each artist created a small series of new artworks for the Acute Care Tower. This brochure features one artwork by each artist along with a short statement about their artwork.



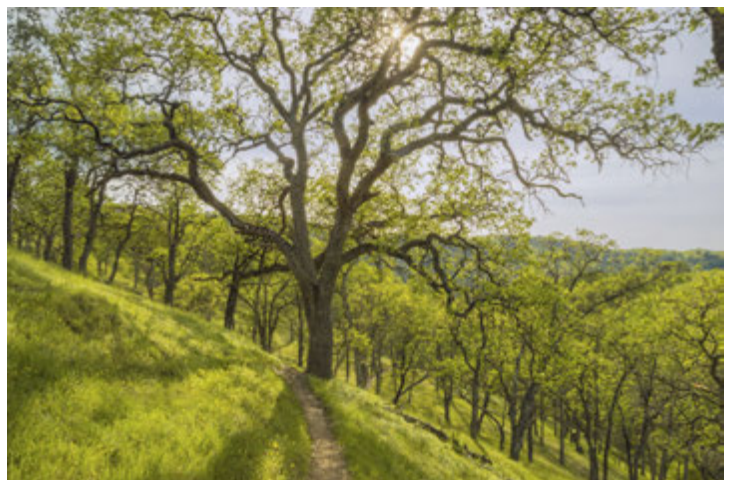
View from Drakes Head, South 2015.1, 2015, monoprint, 28 x 40 inches

NORA AKINO

Nora Akino's landscapes connect the viewer to an inner place of calm and joy. She works primarily from memory rather than relying on photos or sketches. She focuses on the feelings that a particular setting evoked rather than factual details. Akino hopes the hospital visitor's response to her artwork might be "like a deep breath, an interval when the concerns and demands of the day recede for a moment and allow the person to be in the moment, seeing and feeling what is in front of them and responding to it freely and openly."

ROB BADGER

Rob Badger's photographs celebrate the beauty of Alameda County's natural outdoor spaces and encourage a sense of peace and relaxation. Badger states, "The natural world attracts our attention, and positively stimulates our senses and emotions. Positive images of nature have similar effects, so one does not need to be in a natural environment to experience the benefits."



Backlit Spring Foliage on Blue Oak, Lake Del Valle Regional Park, Alameda County, California, 2015, photograph: archival dye sublimation print on semi-gloss white aluminum substrate, 32 x 48 inches

MICHAEL CUTLIP

Michael Cutlip's colorful mixed media paintings are playful and inviting. The paintings feature birds that are commonly found in our regional parks, gardens, and backyards. The paintings encourage the viewer to look closely at the details in each artwork. Cutlip hopes "the work invites the audience to come back over and over again, finding something new every time. The images may pull you in, once in front of the painting, you will find the details holding your attention."



Cedar Waxwing, 2015, mixed media on wood panel, 30 x 30 inches



Summer Succulents, 2015, stained glass mosaic, 33 x 39 inches

GINA DOMINGUEZ

Gina Dominguez looked to her own garden for inspiration when making her glass mosaics. She chose to depict succulent plants because of their interesting variety of shapes and sizes, and chose to work in colors celebrating the four seasons. She hand cuts and carefully places each piece of glass to create the design. Dominguez says, "My goal as an artist is to create art that will spread joy. If I can make someone smile or take their mind off whatever is bothering them, then I am happy."

CARMEN LOMAS GARZA

Carmen Lomas Garza's painting tells the story of a community celebration honoring Mrs. Romero (shown wearing a pink lei). The viewer is encouraged to look closely at the details and to explore the story of the scene before them. "The face of each person is a unique miniature portrait, and the people reflect the diversity of cultures in Alameda County. It is my hope that viewers will see familiar faces and be drawn into the painting, providing a few moments of entertainment and relief from the stress of a hospital visit."



Mrs. Romero's Retirement Party In Her Parents' Backyard, 2015, acrylic paint on wood panel, 30 x 60 inches

NANCER J. LEMOINS

Nancer J. LeMoins' prints remind the viewer that nature can inspire and heal us. The details and rich colors invite the viewer to become immersed in the image. LeMoins shares her experiences with nature by stating, "When we feel that our time of light and beauty is going away, as we are facing a winter in our bodies and hearts, the persimmons remind us that beautiful fruit is born from the beginning of the winter. It is a message to us when we are having a difficult time that there is energy and life in dark times. Fruits harbor the seeds of new trees and new life."



Energetic Persimmons, 2015, reduction print, 30 x 36 inches



Highland Nurses 1, 2015, watercolor, gouache, aquatint with soft ground etching, color photocopy, gold leaf and chine collé, 30 x 38 inches

HUNG LIU

Hung Liu's mixed media artworks honor Highland's long history of service to the community. She used historical references including photographs of Highland's nurses from the 1920s and 1930s and blueprints and maps from when the hospital was originally built. Liu gathered the reference imagery from the Oakland History Room at the Oakland Public Library. Each piece is composed of hand-painted portraits, printed ornamental details from the hospital's historic architecture, traditional renderings of Chinese birds from the Ming Dynasty, and hand-colored cut-outs of local flowers. Liu collaborated with Paulson Bott Press on the artworks.

SUSAN LONGINI

Susan Longini's glass artworks celebrate the daily transitions of sunrise and sunset and are meant to be metaphors for the natural changes in our lives. Longini states, "Sunrise is a metaphor for new beginnings – of the day, an era, new possibilities, and hope – while a vibrant and colorful sunset is a metaphor for the end of a full day, an era, or a life fully lived."



Sunrise, 2015, glass, pâte de verre method, 28 x 44 x 1.5 inches

AJUAN MANCE

Ajuan Mance's playful drawings are snapshots of everyday life found throughout many parts of Alameda County. The settings depicted were selected because they each capture a type of location that exists in cities throughout the Bay Area: a street scene, marina, and farmers market. When looking at these drawings, Mance hopes people will "feel joy in the unexpected and comfort in the familiar" and "see something of themselves and their community in each drawing. The images depict everyday moments – flying a kite, eating ice cream, chatting with a friend on the sidewalk, or shopping for vegetables."



We Move, 2015, acrylic paint and India ink on museum board, 32 x 40 inches



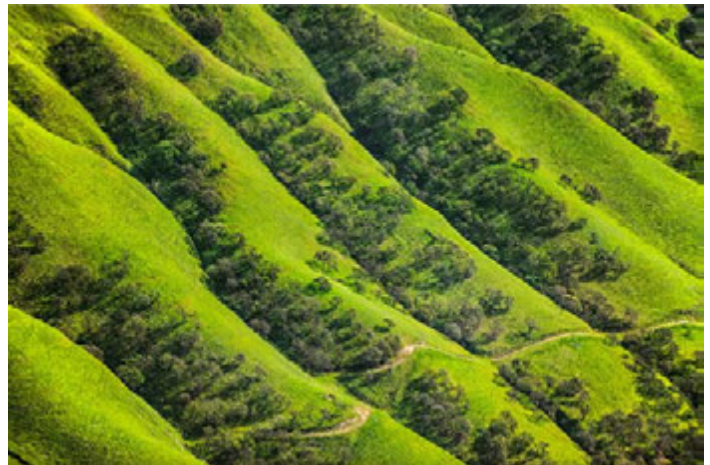
Enduring Light 1, 2015, acrylic and oil on canvas, 40 x 36 inches

ELISE MORRIS

Elise Morris brings light, shadows, reflection, and the layering of elements from the natural world into her paintings. She is deeply inspired when surrounded by nature and says, "I find myself looking to the light. I look through the trees, in the heavy clouds, at the reflections in the creek. It is ever-changing and always there, a basic element in our daily experience. Where there is light, there is clarity, warmth, and the hope for what is ahead."

BARRIE ROKEACH

Barrie Rokeach's aerial photography provides a unique view of Alameda County. The photographs were taken from a small aircraft high above the landscape. The images are engaging and thought-provoking while also quiet and serene. In talking about his process of capturing the image, Rokeach states, "As I circle around a form, observing the lighting, shadows, textures and colors transforming, at some point the intensity heightens and formalizes in my mind."



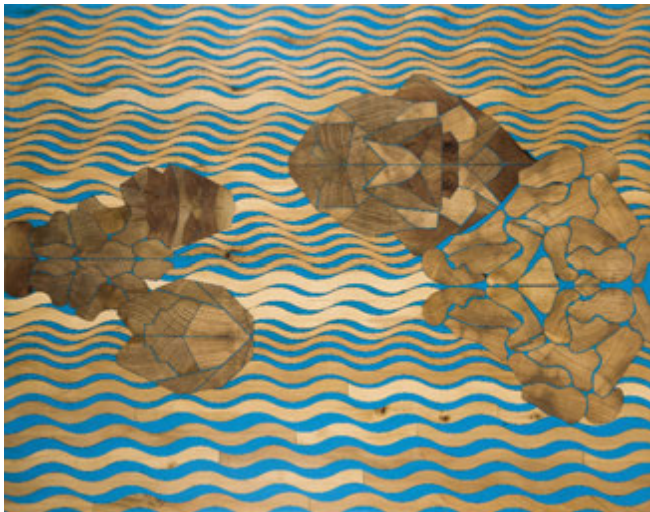
Ridges Near Lake Del Valle, 2015, digital photographic image on Epson Premium Photo Paper, 30 x 45 inches

JESSICA SABOGAL

Jessica Sabogal's paintings feature mothers and their children. Each painting depicts a natural element in the background, selected by the family, related to the family's cultural background. Sabogal was inspired to create this series of work because she believes that "being a mother can be one of the most challenging jobs on earth, and I want the women who enter the hospital to see my artwork and to feel at home. I want them to feel uplifted and unafraid, united and understood."



We Are All Sacred, 2015, spray paint on canvas, 27 x 27 inches



Adrift, 2015, cedar and epoxy, 28 x 36 x 1 inches

MATTHEW SCHEATZLE

Matthew Scheatzle's wood and resin artworks explore reflection and landscape in mirror-like imagery. Scheatzle's process involves cutting and fitting together many small pieces of wood much like building a puzzle. For this project, Scheatzle used the wood of a cedar tree that fell down during a windstorm in Oakland. When talking about why he enjoys using repurposed wood, Scheatzle states, "The material is getting a second chance, a rebirth if you will. Its history is still visible in the wood grain, yet transformed."

TIFFANY SCHMIERER

Tiffany Schmierer's ceramic sculptures are inspired by places throughout Alameda County including the hills, bay, gardens, and the annual County Fair. Schmierer combines images of the natural world and man-made elements that make up the landscape of the Bay Area. Each piece is full of details, colors, textures, and patterns that are found in each location. Schmierer hopes to evoke positive memories and "bring these wonderful places into the hospital and to transport the viewer to a place of exploration."



Patternscape: East Bay Hills, 2015, ceramic, 19 x 17.5 x 2 inches

JENN SHIFFLET

Jenn Shifflet's oil paintings embody tranquility. The cloud and plant-like forms are soft and dreamy. The calm, serene, watery and sky-like imagery gives a feeling of light scattered across a surface. She develops her paintings through many layers of mostly transparent paints built up over time. This results in a sense of space and luminosity. Shifflet says, "My hope is that this work provides a moment of peace for all who view it."



Tranquil Dreams, 2015, oil on panel, 36 x 42 inches



Encounters: Street Corner, 2015, oil on panel, 24 x 34 inches

OWEN J. SMITH

Owen J. Smith's paintings capture quiet, contemplative moments with nature in our urban setting. Smith states, "Seldom do we take time to notice a bird singing in a tree, tend to a garden, or spend the day with a child along the shore. My hope is that these paintings will remind the viewer to slow down and experience those small interactions with nature."

ARTWORK LOCATIONS BY ARTIST

Nora Akino: Levels 1, 3

Rob Badger: Level 4

Michael Cutlip: Level 5

Gina Dominguez: Levels 4,5,6

Carmen Lomas Garza: Level 4

Nancer J. LeMoins: Level 8

Hung Liu: Levels 7,8

Susan Longini: Level 9

Ajuan Mance: Level 6

Elise Morris: Level 5

Barrie Rokeach: Level 3

Jessica Sabogal: Level 5

Matthew Scheatzle: Levels 3,7

Tiffany Schmierer: Levels 4,7

Jenn Shifflet: Levels 7,9

Owen J. Smith: Level 9

**TO LEARN MORE ABOUT THE ARTISTS AND THEIR ARTWORK,
WATCH SHORT VIDEOS AT <http://tinyurl.com/youtubeACAC>**

Includes videos about artists who made artwork for the Acute Care Tower and the Highland Care Pavilion.

COUNTY OF ALAMEDA'S ACUTE TOWER REPLACEMENT PROJECT

Alameda County's Acute Tower Replacement (ATR) Project is a construction project that will rebuild the Highland Hospital facilities, which will be operated by Alameda Health System. The ATR Project is crucial for providing continued healthcare services to the people of Alameda County. When completed in 2017, the Project will bring Highland Hospital into compliance with the State of California's strict seismic safety laws. The ATR Project promises to carry on Highland Hospital's proud traditions and build on its strengths far into the future. The Acute Care Tower (ACT) will house intensive care, medical and surgical care, a family birthing center and a diagnostic interventional services center. The ACT will open to the public in April 2016 and is located at 1411 East 31st Street in Oakland, California. For more information, please visit www.HighlandATR.org.

ARTIST SELECTION PROCESS & SELECTION COMMITTEE

The artists were selected through an open, competitive process by a selection committee comprised of Alameda Health System and Highland staff, local artists, and community members. **The Artist Selection Committee members for the Acute Care Tower were:** Vicky Mei Chen (Artist), Jodi De Lucca (Director of HR Operations, Alameda Health System), James Dunfrund (Patient Family Advisory Committee Representative), Russ Ellis (Artist), Chris Granillo (Artist), Cheri King (Patient Family Advisory Committee Representative), Heather MacDonald-Fine (Health Services Manager, Alameda Health System), Rachel-Anne Palacios (Artist), Jerri Randrup (Director, Corporate Communications & Marketing, Alameda Health System), Vecepia Robinson (former Director of Patient & Family Centered Care, Alameda Health System), Charlotte Wills, M.D. (Department of Emergency Medicine at Highland Hospital), and Barry Zorthian, M.D. (Medical Staff Representative to the Alameda Health System Board of Trustees).

Special thanks to the Patient Family Advisory Committee for their involvement and support.

ALAMEDA COUNTY ARTS COMMISSION & THE COUNTY'S PUBLIC ART PROGRAM

The Office of the Alameda County Arts Commission administers the County's Public Art Program with guidance from the Members of the Alameda County Arts Commission and the Alameda County Public Art Advisory Committee. Established in 1994 by Alameda County's Percent for Art Ordinance, this program provides for public art elements connected to capital improvement projects undertaken by Alameda County. The artwork commissioned through the Public Art Program becomes part of the Alameda County Art Collection. All of the Arts Commission's programs are based on the belief that the arts and creativity are an essential part of a successful and thriving community.

Arts Commissioners, Community Representatives by Supervisorial District

District 1: Arthur Barinque, Anita B. Carr, David Judson (Vice-Chairperson)

District 2: Dorsi Diaz, Suzanne Gayle, Gail Lundholm

District 3: Eric Murphy, Mona Shah, Leisel Whitlock-Petersen

District 4: Andrew Johnstone, Cathy O'Dea, Scott Miner (Chairperson)

District 5: Barbara Hedani-Morishita, Pamela Mays McDonald

Arts Commissioners, Ex-Officio Representatives & County Supporters

Chris Bazar, Director, Alameda County Community Development Agency

Damien Gossett, Asst. Deputy Director, Alameda County Community Development Agency

Willie A. Hopkins Jr., Director, Alameda County General Services Agency

Steve Manning, Auditor-Controller, Alameda County Auditor-Controller Agency

Ann Wettrich, California College of the Arts, Faculty Member

Alameda County Public Art Advisory Committee Members: Vicky Chen, Nick Gomez, Barbara Holmes, Kari Marboe, Tomyé Neal-Madison, Mark Read, Emily Van Engel, Ann Wettrich, and Mark Yin

For more information about the County of Alameda's ATR Project Public Art Program, contact the Office of the Alameda County Arts Commission at (510) 208-9646 or visit www.acgov.org/arts.

Artwork is part of the Alameda County Public Art Collection. All artwork copyright the artists. Nora Akino photo copyright Benjamin Blackwell. Rob Badger and Barrie Rokeach photos copyright the artists. All other artwork photos copyright Sibila Savage. All rights reserved.