

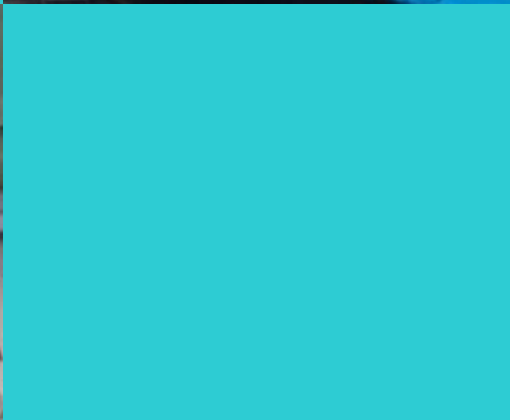


Alameda County **Health Care for the Homeless**



ACHCH Commission Update to the Alameda County Board of Supervisors Health Committee

November 23, 2020



Alameda County Health Care for the Homeless
1404 Franklin Street, Suite 200
Oakland, CA 94612
www.achch.org



Alameda County **Health Care for the Homeless**

Vision

We envision a just society where all persons have access to quality health care and housing. We believe the problems of homelessness and health inequities can be solved.

Mission

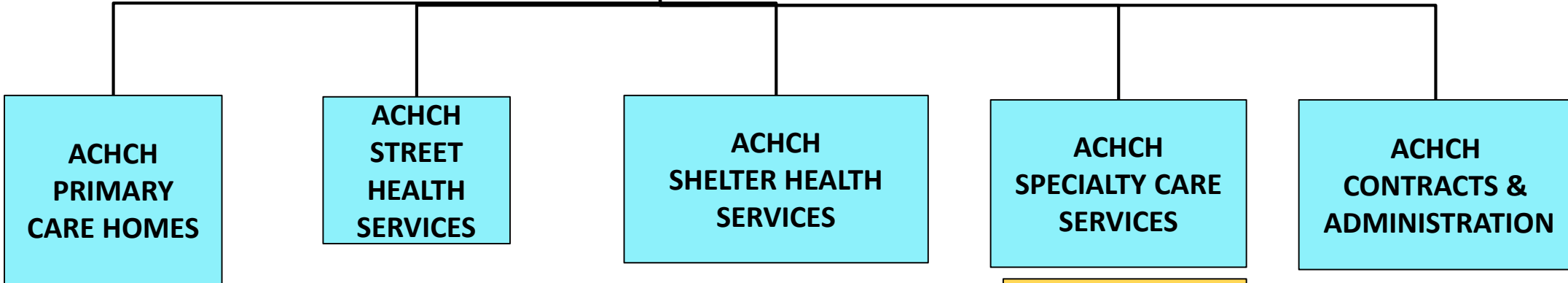
Our mission is to improve the health of Alameda County residents experiencing homelessness by ensuring access to culturally informed, whole-person health care and housing services.



Who We Serve, What We Do

- ACHCH: a federally qualified health center program that provides services directly, and in partnership with: AHS, FQHCs and community providers
- ACHCH Health Center services are supported by federal HRSA grant and MHSA
- Who we serve: **people experiencing homelessness Countywide:**
 - 1. Unsheltered** on streets and encampments
 - 2. Sheltered** population in shelters, recovery, and transitional programs
 - 3. Doubled-up/Precariously-Housed/couch surfing**

ACHCH Health Center Operational Chart GY 2020



Alameda Health System
 (4 clinics)
 Lifelong TRUST Clinic

11 Teams Covering
 14 Zones in AC:
 Lifelong (5)
 Tiburcio (4)
 BACH (2)
 ACHCH (1)
 COVID Services

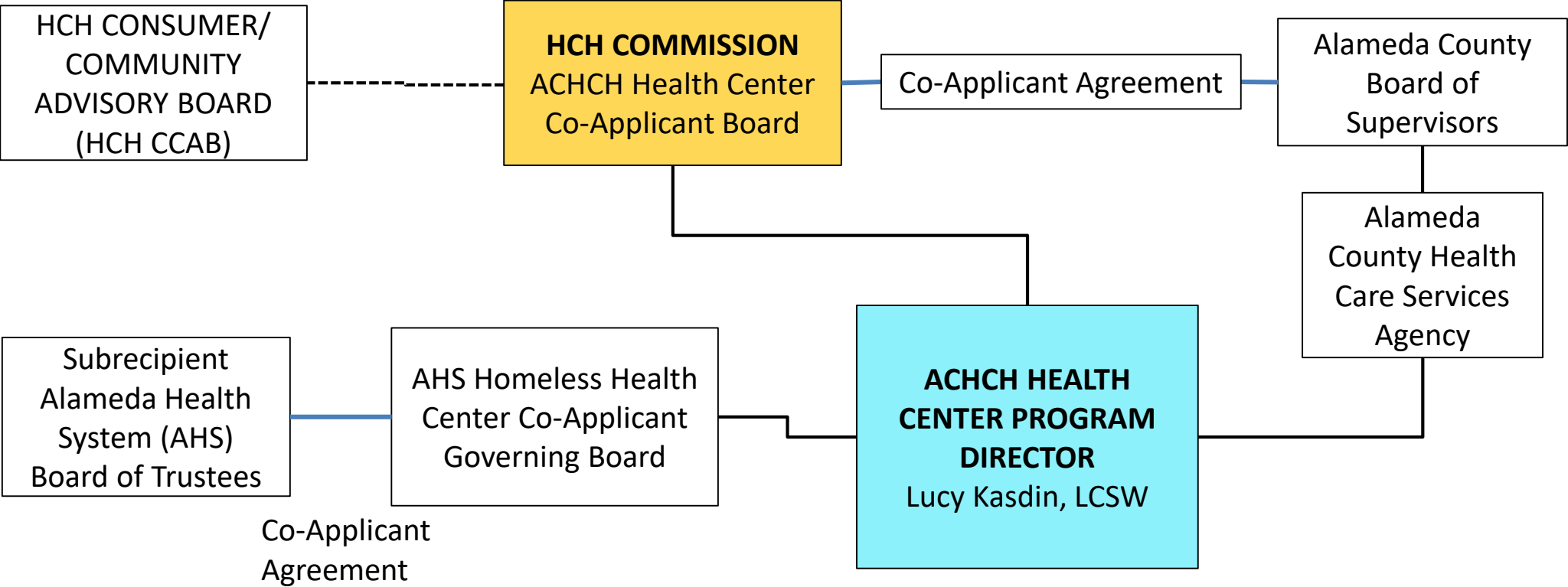
ACHCH Shelter Health Team
 AHS Mobile Health Unit
 COVID Services

Dental:
 La Clinica
 Onsite Dental
 AHS
 11 AHS Specialty Care
 Clinical Services
 HCH MAT and
 Psychiatry Svcs

**Total 10,827
 patients served in
 48,014 visits
 GY2019**
 Total 126 FTE
 Direct, Grant-
 funded FTE: 26

Federal Government
HHS
HRSA-BPHC

ACHCH Health Center Governance Chart GY 2020





Alameda County
**Health Care for
the Homeless**

Governance: ACHCH Commission



Laura Guzmán, JD, Chair
Gloria Cox-Crowell, Vice Chair
Lois Bailey Lindsey, Secretary
Samuel Weeks, DDS
Michelle Schneidermann, M.D.
Gerard Jenkins, M.D.

Shannon Smith-Bernardin, RN
Lynette Lee
Claudia Young
Greg Kats
Fr Rigoberto Caloca-Rivas, PhD
Ana Bagtas, MHA



Alameda County
**Health Care for
the Homeless**

Governance: Consumer Advisory Board



April Anthony

Sabrina Fuentes

Jeannette Johnigan

Sam Weeks

Bennie Whitfield

Brenda Whitfield

Guitar Whitfield

Mark Smith

Denise Norman



ACHCH ensures people experiencing homelessness have access to:

1. **Primary care:** medical, mental health, dental homes
2. **Specialty care:** medical, mental health, dental care
3. **SUD services:** Harm reduction to prevent overdoses, Medication Assisted Treatment (buprenorphine for opioid addiction)
4. **Non-clinical enabling services:** housing, benefits, food assistance, case management; addressing basic needs.



Homelessness in Alameda County

- **Alameda County Point-In-Time Count (PITC).**
January 30, 2019.
 - 8,022 persons experiencing homelessness on this one night
 - Unsheltered: 79% (6,312 people)
 - Sheltered: 21% (1,710 people)
- **Projected Yearly Count: Alameda County 2019**
 - Estimate: 33,291 persons experiencing homelessness (ACHCH Needs Assessment)





Severity of Health Conditions

- Self-reported health conditions:
 - Disabling Conditions: 42%
 - Psychiatric conditions: 39%
 - Alcohol and drug use: 30%
 - PTSD: 30%
- Mental Health Services Act (MHSA) investments leverages the federal grant to expand ACHCH services to the most vulnerable in the unhoused population.





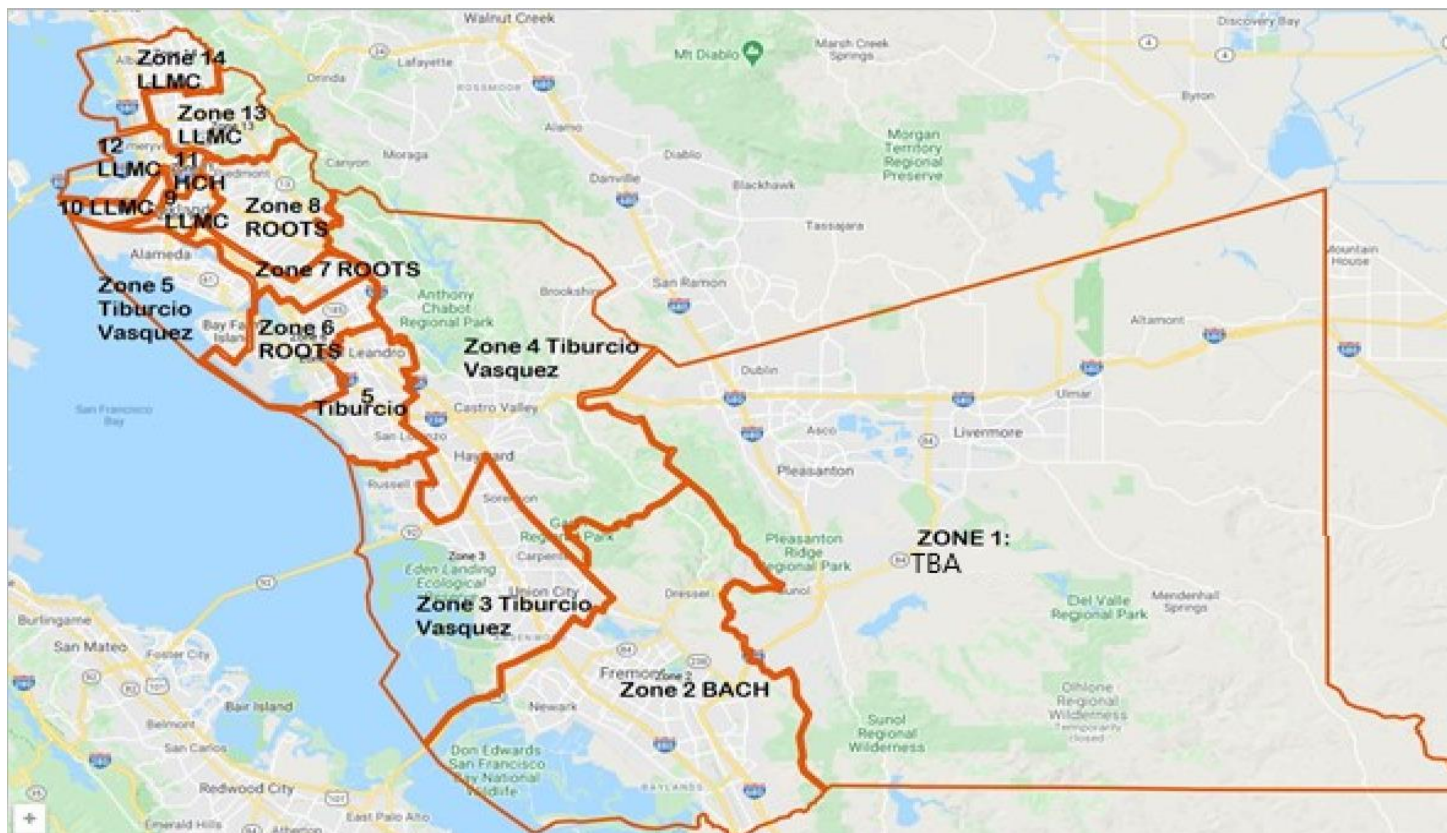
Challenges





Alameda County
**Health Care for
the Homeless**

ACHCH Street Health



Tiburcio Vasquez
Health Center Inc.





Health care services at shelters and homeless services sites:

- Nursing – Flu Vaccine at 38 homeless sites
- Short-term Behavioral Health Services at shelters
- Dental Case Management
- AHS-Operated Mobile Health Van services
- Increased collaboration with shelter, housing and medical providers





Homeless COVID-19 Response

- **Directing community response:** Convening county-wide shelter and outreach providers through weekly calls to provide guidance, info and communication with 75+ providers
- **Lead COVID (+) Rapid Response:** To date 70 shelter and street Rapid Responses to outbreaks (testing, isolation, site investigation) in collaboration with partners and ACPHD.
- **Supplies:** Provide PPE, masks and supplies directly to 100+ provider agencies.
- **Guidance:** Continually updating guidance and materials to keep our community prepared:



<https://www.achch.org/coronavirus.html>



- On track to serve 10,000 patients 40,000 visits including telemedicine in 2020
- Street Health Teams will provide health care and engagement to 2,000+ unsheltered persons Countywide
- Shelter Health 2020 flu vaccinations effort laying groundwork for 2021 COVID-19 vaccinations
- COVID Response:
 - Rapid Response to to 70 COVID-19 outbreaks
 - Tested 2,500 people experiencing homelessness in 168 testing events.
 - Deep involvement in COVID-19 Roomkey and Operation Comfort Hotels





Alameda County **Health Care for the Homeless**



www.achch.org

