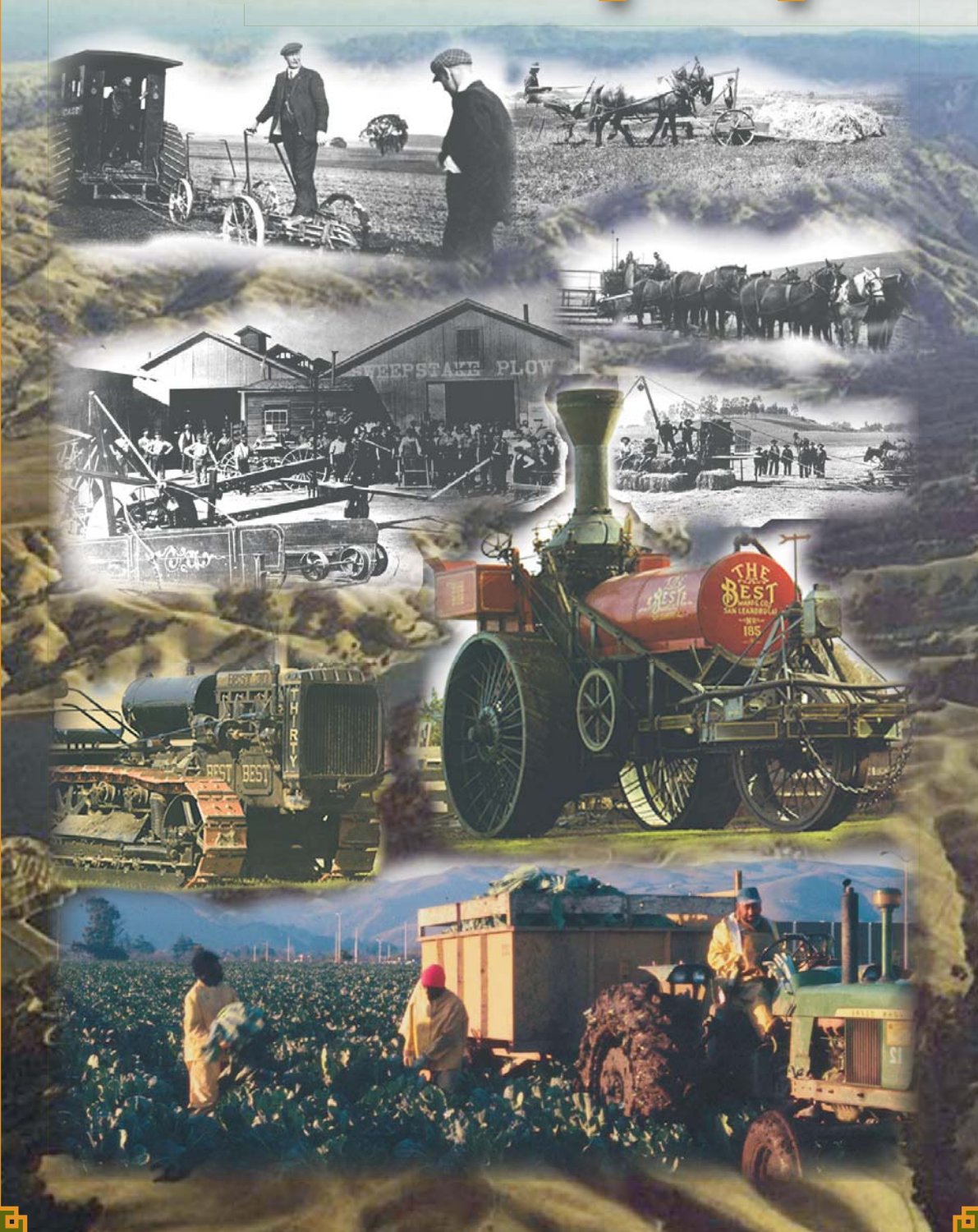


# Alameda County

# 2006 Crop Report



Department of Agriculture/Weights & Measures

# ANNUAL CROP REPORT FOR YEAR 2006

## ALAMEDA COUNTY

### ALAMEDA COUNTY BOARD OF SUPERVISORS

SCOTT HAGGERTY, PRESIDENT..... DISTRICT 1  
GAIL STEELE..... DISTRICT 2  
ALICE LAI-BITKER, VICE PRESIDENT... DISTRICT 3  
NATE MILEY..... DISTRICT 4  
KEITH CARSON..... DISTRICT 5

### COUNTY ADMINISTRATIVE OFFICER

SUSAN MURANISHI

### DIRECTOR, COMMUNITY DEVELOPMENT AGENCY

JAMES E. SORENSEN

### AGRICULTURAL COMMISSIONER SEALER OF WEIGHTS AND MEASURES

DENNIS F. BRAY

## TABLE OF CONTENTS

Table of Contents .....	Inside Front Cover
Letter to the Secretary/Board of Supervisors.....	1
Dedication to James Newey .....	2
Staff.....	3
Comparison Summary .....	4
Field Crops.....	4
Fruit and Nut Crops.....	5
Livestock and Poultry.....	5
Nursery Products .....	6
Vegetable Crops .....	6
Pest Detection.....	6
Sustainable Agriculture Reporting.....	7
Equine Statistics .....	7
50 Year Comparison Charts.....	8
General Alameda County Information.....	Inside Back Cover



**James E. Sorensen**  
Agency Director

**ALAMEDA COUNTY COMMUNITY DEVELOPMENT AGENCY  
AGRICULTURE/WEIGHTS AND MEASURES DEPARTMENT**

DENNIS F. BRAY, AGRICULTURAL COMMISSIONER/ SEALER OF WEIGHTS AND MEASURES  
224 WEST WINTON AVENUE, ROOM 184, HAYWARD, CALIFORNIA 94544  
phone 510.670.5232 fax 510.783.3928 www.acgov.org

A.G. Kawamura, Secretary  
California Department of Food and Agriculture  
and  
The Honorable Board of Supervisors  
County of Alameda, California

June 15, 2007

It is my pleasure to present the 2006 Alameda County Crop Report. In accordance with Sections 2272 and 2279 of the California Food and Agriculture Code this publication is presented annually and reports statistical information on acreage, yield, and gross value of Alameda County agricultural products.

The 2006 total gross value of Alameda County's agriculture was \$43,412,000. This figure is a slight decrease (-1.2%) from the 2005 gross production value (\$43,951,000) or \$539,000.

Nursery Products was again our highest valued commodity. This category, which includes ornamental trees and shrubs, bedding plants, and indoor decoratives, had a decrease of \$614,000 (-2.9%) compared to 2005. Livestock was the next highest valued commodity and had an increase of \$181,000 (+2.0%). This increase is attributed mainly to stronger market prices during the reporting year. Fruit and Nut Crops was our third valued commodity and had a decrease of \$531,000 (-6.2%) due to the continued drop in white wine grape prices. The value of our vegetable crops increased by \$470,000 (+68.8%) due mainly to an increase of planted acres. Field crop totals had a slight decrease of \$45,000 (<-1%).

I would like to emphasize that the numbers in this report are gross values only and in no way reflect the net income or loss to producers.

My appreciation and thanks to John Gouvaia, Gregory Gee, Ron Hasemeyer and all our other staff for collecting and compiling the data for this report. A special "Thank You" to Janie Chambers for her invaluable assistance in preparing and producing this report. As always, I wish to express my appreciation for the cooperation of all agricultural producers, contributing organizations, and those individuals who provided the necessary information for this report.

Respectfully Submitted,

Dennis F. Bray  
Agricultural Commissioner  
Sealer of Weights and Measures

# The 2006 Alameda County Agricultural Crop Report is dedicated to JAMES D. NEWEY

The 2006 Crop Statistics and Annual Report for the County of Alameda is dedicated to Jim Newey, our Assistant Agricultural Commissioner for the past eight years. On December 1, 2006, Jim passed away.

He was a graduate of the University of California at Berkeley and earned his BA in History/Biology in 1972.

His worked for the California Department of Food and Agriculture (CDFA) from 1975 – 1980. He was a field supervisor for their Dutch Elm Disease Eradication Project. They inspected and treated elm trees for disease. He also worked on another CDFA project managing test plots for Guayule Natural Rubber Development.



In February 1980 Jim joined the Alameda County Department of Agriculture.

As a biologist he worked out of a field station and was assigned to our vertebrate pest and weed control program. He was soon promoted to Senior Agricultural Biologist and performed inspection in pesticide use enforcement, pest exclusion, nursery and seed, coordinating local pest eradication projects and began his foray into managing the department's computer system.

In October 1989 Jim was promoted to Deputy Agricultural Commissioner. He was responsible for managing our pest detection, pest exclusion, fruit and vegetable and egg quality control, nursery and seed inspection programs. He continued to manage our computer system and even wrote database management programs – two of which are still in use: one in our weights and measures program; and the other in our agriculture division used to track activities in state mandated programs.

In November 1997 Jim was promoted to Chief Deputy Agricultural Commissioner. He prepared work plans, wrote department correspondence, and prepared our annual financial statements. He monitored expenses and revenues, was involved in recruitment and training, and represented the department at various meetings.

In December 1999 Jim was promoted to Assistant Agricultural Commissioner. His primary responsibility was conducting and monitoring the department's finances, including purchases of equipment and supplies. He continued to represent the department at various meetings (Ag Advisory, Farm Bureau, Cattlemen's Association).

Jim had an active interest in the history of Alameda County, particularly our agricultural heritage. He was recognized as an authority in this area and had shown his presentation of "The History of Alameda County Agriculture" to many groups. **Many of the old pictures he found and used in his presentation are included on the cover and inside this crop report.**

Jim was an avid tennis player and golfer. He built and flew radio remote controlled gliders. He loved to garden – especially fruit trees. Often he would bring in bags of fresh or dried fruits, including plums and persimmons. In earlier years Jim kept a couple of bee hives in his backyard. He would harvest honey and bees wax. Jim was also a skilled carpenter. He remodeled his own kitchen and built his own cabinets. He was also a lover of jazz and an accomplished jazz pianist.

Over the past many years, Jim offered his talents during the construction of the Agriculture Department's fair display. Any idea that the fair committee came up with he would build – a perpetual rocking chair, a twirling sign over the display, a bottomless bottle of wine pouring into a wineglass, a lighted question and answer board. Jim was always up for the challenge.

For anyone who knew Jim, his dedication as husband and father was obvious. This was especially apparent whenever he spoke of family trips taken with his wife, Ann, and his daughter, Elizabeth.

Jim served Alameda County 26 years and left many good memories. He will be missed.

# ALAMEDA COUNTY AGRICULTURAL COMMISSIONER/SEALER

## • Staff •

### Agricultural Commissioner Sealer of Weights and Measures

Dennis F. Bray

#### Assistant Agricultural Commissioner

Gregory L. Gee

#### Assistant Sealer of Weights and Measures

Joseph J. Ayres

#### Chief Deputy Agricultural Commissioner

John W. Gouvaia

#### Deputy Agricultural Commissioner

Ronnie K. Eaton

#### Deputy Sealer of Weights and Measures

Ronald G. Hasemeyer

#### Pest Detection Supervisor

Cheryl E. Mailho

#### Agricultural Biologists

Robert Blumenthal  
Edwin De Villa  
Edmund Duarte  
Patricia Hunt  
Blane Manchester

Kenneth Peek  
Tadeusz Pieslak  
Alcides Reyes  
Cathy Roache

Raghubinder Sahota  
James Smith  
Ashenafi Tadesse  
Michelle Trudeau  
Rene Vega

#### Weights and Measures Inspectors & Assistant Inspector\*

William Alejandro  
Brent Faria

Eric Forsberg  
Ivan Gallo  
Rodolfo Raras\*

Estella Harris  
Frank Jensen

#### Pest Detection Specialists

Mohamed Elhashash  
Carmen Franke

Jonathan Gomes  
Joanne Greer

Mohamed Haj  
Anand Shankar

#### Insect Trappers

Walter Bruj  
Lisa Centoni  
Mikael Dooha  
Sean Eckert  
Shawn Harrild

Cynthia Horn  
Carl Kurahara  
Khang Lam  
Seth Mariconi  
Bridget Mooney

Rhonda Nave  
Reed O'Donnell  
Kristi Ojigbo  
Anni Pattee  
Lloyd Petroelje

Ryan Reed  
Justin Riggs  
Timothy Ryan  
Nico Seely  
Dereje Tamerat

#### Clerical Support

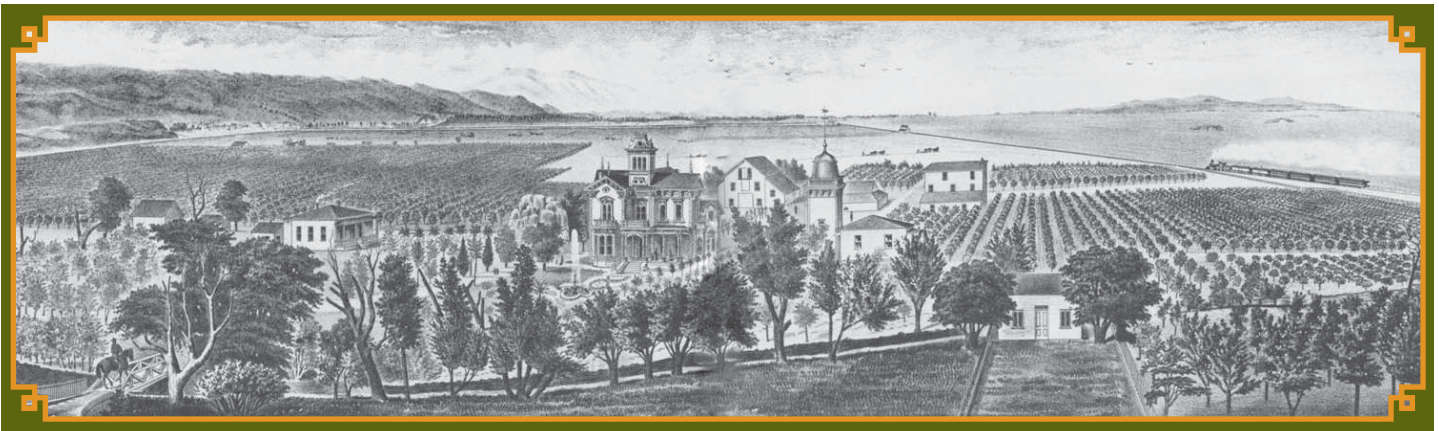
Oscar Magtibay

Cora Robles, Secretary II  
Clarice Walker

Kristy Garcia

# COMPARISON SUMMARY

	2006	2005	2004	2003	2002
Field Crops	\$4,883,000	\$4,928,000	\$5,087,000	\$4,417,000	\$ 4,232,000
Vegetable Crops	1,153,000	683,000	682,000	451,000	865,000
Fruit & Nut Crops	8,049,000	8,580,000	9,084,000	7,902,000	5,413,000
Nursery Products	20,451,000	21,065,000	17,491,000	17,730,000	13,599,000
Nursery Cut Flowers	Included in Nursery Products	Included in Nursery Products	Included in Nursery Products	Included in Nursery Products	630,000
Livestock & Poultry	8,876,000	8,695,000	7,850,000	6,842,000	5,175,000
Apiary Products	Included in Livestock & Poultry	Included in Livestock & Poultry	Included in Livestock & Poultry	Included in Livestock & Poultry	99,000
<b>TOTALS</b>	<b>\$43,412,000</b>	<b>\$43,951,000</b>	<b>\$40,194,000</b>	<b>\$37,342,000</b>	<b>\$30,013,000</b>



Meek Estate and Orchards, Hayward, *Thompson and West Atlas, 1878*

## FIELD CROPS

Crop	Year	Harvested Acreage	Per Acre	Total	Unit	Per Unit	Total
Hay, Alfalfa	2006	389	5.37	2,089	Ton	\$ 143.00	\$ 299,000
	2005	753	4.37	3,290	Ton	\$ 145.00	477,000
Hay, Other	2006	3,648	3.00	10,944	Ton	\$ 86.00	941,000
	2005	4,820	2.50	12,050	Ton	\$ 87.00	1,048,000
Range Pasture	2006	189,000			Acre	\$ 17.87	3,377,000
	2005	190,000			Acre	\$ 17.57	3,338,000
Miscellaneous	2006	315	Includes sugar beets, safflower, corn silage, barley, oats, wheat, beans, irrigated pasture, etc.				266,000
	2005	175					65,000
<b>TOTAL</b>	2006	193,352					4,883,000
	2005	195,748					\$ 4,928,000

# FRUIT & NUT CROPS

Crop	Year	Bearing Acreage	Per Acre	Total	Unit	Per Unit	Total
Grapes (Wine)							
Red	2006	1,681	4	6,590	Ton	Various	\$6,090,000
	2005	1,551	4	6,473	Ton	Various	5,920,000
White	2006	600	3	1,944	Ton	Various	1,914,000
	2005	618	4	2,721	Ton	Various	2,632,000
Misc. Fruit	2006	120	Includes olives, walnuts, strawberries, etc.				45,000
	2005	116					28,000
TOTAL	2006	2,401					8,049,000
	2005	2,285					\$8,580,000

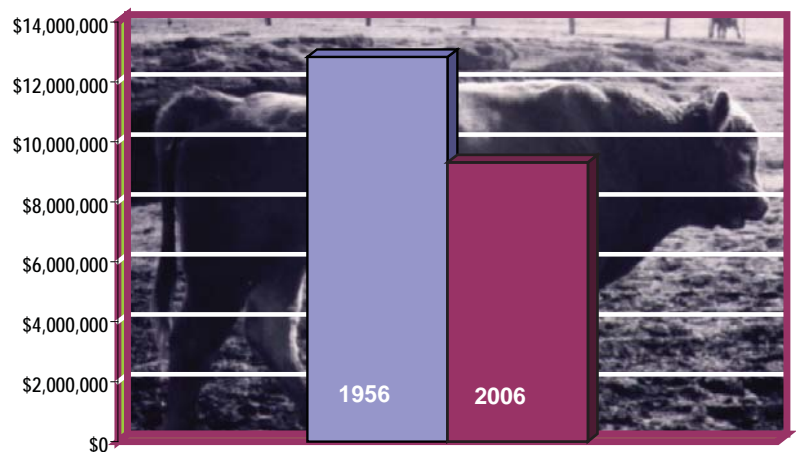
# LIVESTOCK & POULTRY

Item	Year	No. of Head	Total Weight	Unit	Per Unit	Total
Cattle and Calves	2006	13,812	85,502	Cwt.	Various	\$8,721,000
	2005	12,978	86,366	Cwt.	Various	8,550,000
Misc. Poultry and Livestock Products	2006	Includes rabbits, sheep, wool, lambs, hogs, bees and apiary products				155,000
	2005					145,000
TOTAL	2006					8,876,000
	2005					\$8,695,000



Lane steam truck delivering eggs on Clawiter Road, Hayward, CA, 1910  
(photographed by N.P. Neilsen, great grandfather of Ken Peek)

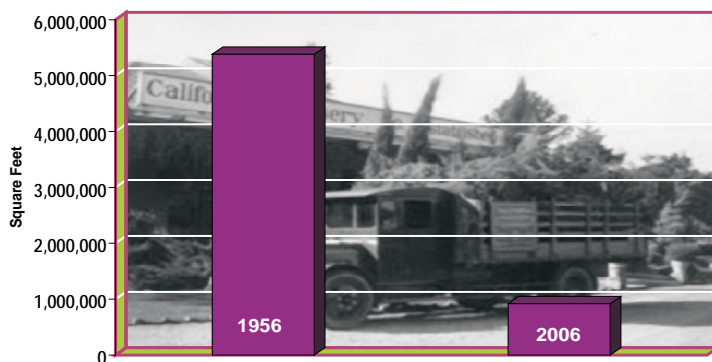
Livestock, Poultry & Apiary Total Value Comparison  
1956 & 2006



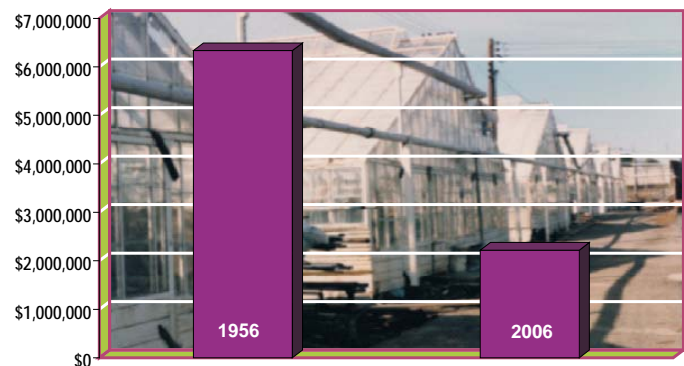
# NURSERY PRODUCTS

Item	Year	House Sq. Ft.	Field Acres	Quantity Sold	Unit	Per Unit	Total
Ornamental Trees and Shrubs	2006	665,150	200	1,127,704	Plt.	Various	\$17,820,000
	2005	665,150	197	1,184,279	Plt.	Various	18,133,000
Miscellaneous Nursery Products	2006	254,300	69	Includes bedding plants, indoor decoratives, narcissus, peonies, christmas trees, cut flowers, etc.			2,631,000
	2005	286,300	65				2,932,000
TOTAL	2006	919,450	269				20,451,000
	2005	951,450	262				\$21,065,000

**Nursery Square Footage Comparison  
1956 & 2006**



**Total Greenhouse Value Comparison  
1956 & 2006**



# VEGETABLE CROPS

Crop	Year	Harvested Acreage	Total
Miscellaneous Vegetables	2006	94	\$1,153,000
	2005	87	\$ 683,000

Includes broccoli, cabbage, corn, fava beans, leaf lettuce, greens, pumpkins, tomatoes, squash, etc.

# PEST DETECTION

7677 insect detection traps were deployed for exotic insect pests, and serviced 99,775 times during 2006 trapping season.

There were 950 yellow panel traps deployed in urban areas for detection of Glassy-winged Sharpshooter and inspected a total of 10,560 times during the year.


In 2006 we had ongoing delimitation trapping done for Japanese Beetle, Gypsy Moth, and Oriental Fruit Fly.

The following economically significant pests were the primary target of this effort: Mediterranean Fruit Fly, Mexican Fruit Fly, Oriental Fruit Fly, Melon Fly, Gypsy Moth, Japanese Beetle, Khapra Beetle, and Glassy-winged Sharpshooter.



# SUSTAINABLE AGRICULTURE REPORTING

## County Biological Control

Pest	Agent/Mechanism	Scope of Program
Yellow Starthistle ( <i>Centaurea solstitialis</i> ) 	Bud Weevil ( <i>Bangasternus orientalis</i> )	Found in most areas of the County
	Seedhead Gall Fly ( <i>Urophora sirunaseva</i> )	Found in most areas of the County
	Seedhead Fly ( <i>Chaetorellia</i> spp.)	Found in most areas of the County
	Hairy Weevil ( <i>Eustenopus villosus</i> )	Found in most areas of the County
	Yellow Starthistle Rust Fungus ( <i>Puccinia jaceae</i> var. <i>solstitialis</i> )	Released at 3 sites

## Organic Farming Statistics

	Number of Registered Organic Producers	Est. Acreage
Miscellaneous Crops	3	75

## Pest Management and Eradication

Pest	Agent/Mechanism	Scope of Program
Artichoke Thistle ( <i>Cynara cardunculus</i> )	Chemical	45 Net Acres/35,000 Acres
Dalmatian Toadflax ( <i>Linaria genistifolia</i> )	Mechanical	One Site/1Acre
Golden Thistle ( <i>Scolymus hispanicus</i> )	Chemical	720 Acres
Iberian Thistle ( <i>Centaurea iberica</i> )	Chemical & Mechanical	One Site/10 Acres
Japanese Dodder ( <i>Cuscuta japonica</i> )	Mechanical	15 Sites
Pampas Grass ( <i>Corederia selloana</i> )	Chemical	1 Site/2 Acres
Puna Grass ( <i>Stipa brachychaeta</i> )	Mechanical	One Site/2 Acres
Purple Star Thistle ( <i>Centaurea calcitrapa</i> )	Chemical & Mechanical	27 Sites/7,500 Acres

## Pest Exclusion

Inspection of incoming shipments of plant products and other high-risk articles to prevent the introduction of pests and diseases harmful to California's agricultural industry. 287 Glassy-winged sharpshooter (GWSS) traps were deployed in various nurseries, with 6,353 servicings for the year.

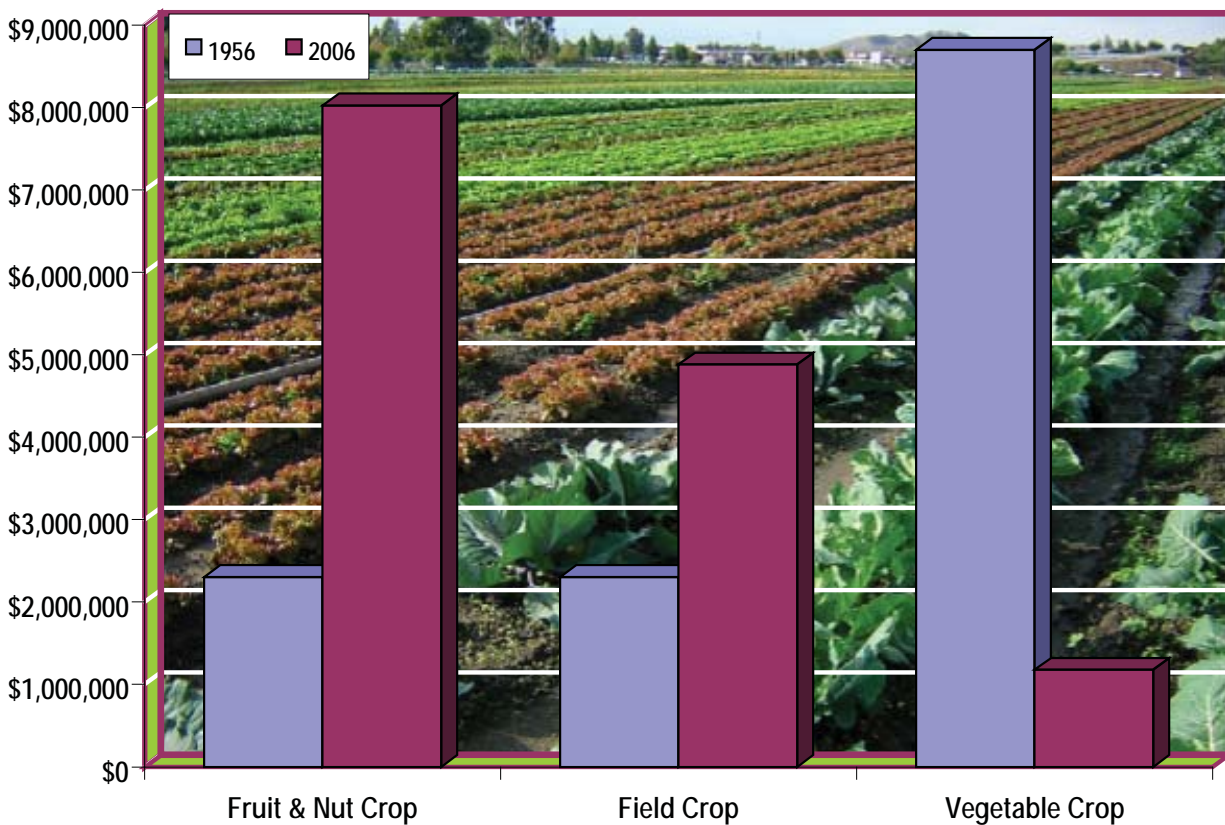
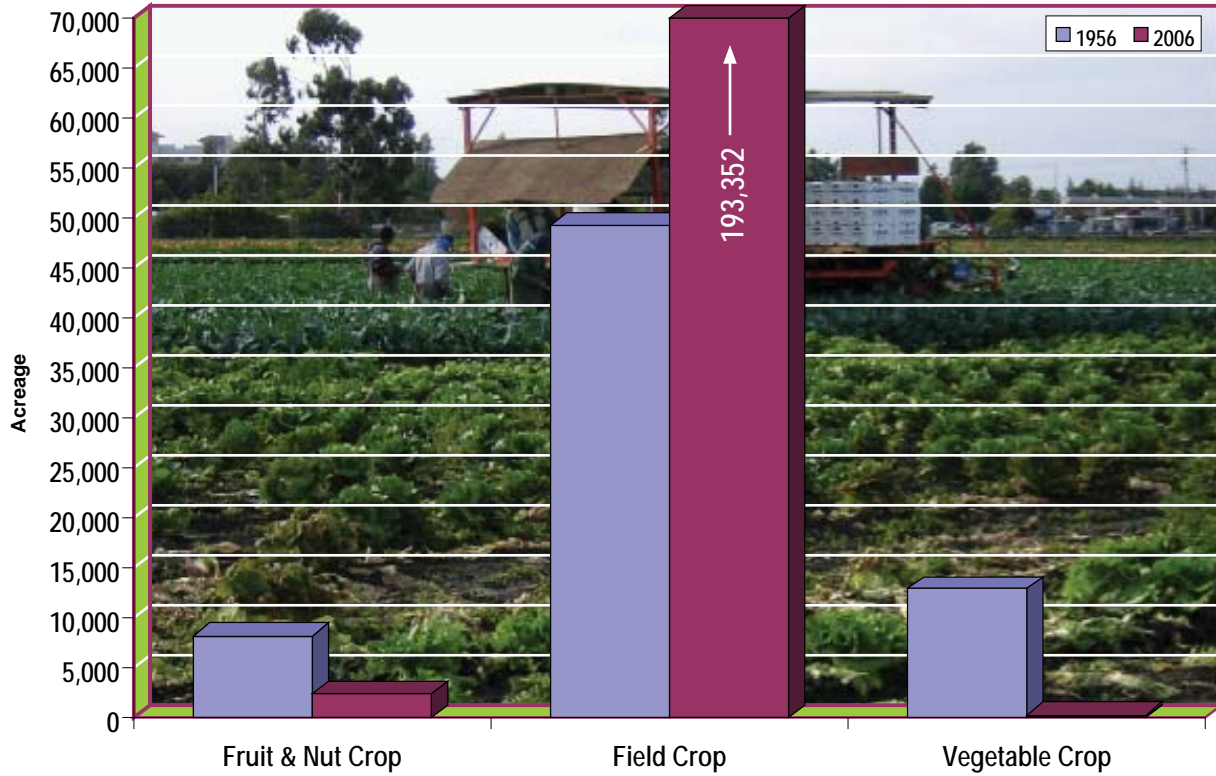
Type of Shipment	Number Inspected	Number Rejected
Parcel Carriers (Post Office, UPS, Federal Express, Etc.)	21,536	283
Trucks	902	4
Household Goods (for Gypsy Moth)	138	0
	Shipments Incoming	Number Rejected
GWSS	4,511	6

## Equine Statistics\*

The last equine census taken reported 8,000 horses but antidotal estimates were closer to 13,000. At this time there are not adequate resources or an assessment process to gather accurate field inventory. Equine uses include, but are not limited to: recreation, non-racing competition, working, racing, and breeding. The purpose of including equine data in our crop report is to demonstrate the economic benefit of the equine industry to the County.

# 50 Year Crop Comparisons

## Crop Acreage Comparison 1956 & 2006



# GENERAL ALAMEDA COUNTY INFORMATION

County Seat.....	Oakland
County Population, 2005 .....	1,526,148
Land Area (Square Miles).....	737.5
Water Area (Square Miles).....	83.8
Persons per Square Mile .....	2,069

## 14 Incorporated Cities

Alameda • Albany • Berkeley • Dublin • Emeryville • Fremont • Hayward  
 Livermore • Newark • Oakland • Piedmont • Pleasanton • San Leandro  
 Union City

## 6 Unincorporated Areas

Ashland • Castro Valley • Cherryland • Fairview • San Lorenzo • Sunol

Total Assessed Property (Local Roll – 2006) .....	\$182,812,579,218
Total Harvested Crop Acreage (2006).....	196,116

Major Roads.....	Interstate 80, Interstate 580, Interstate 680, Interstate 880, Highway 238, Highway 84, Highway 92, Highway 13
------------------	---

Elevation .....	Sea level to 3,817 ft. at Rose Peak in the southern part of the County
-----------------	--

Average Climate.....	Mild winters and cool summers near the Bay. The eastern portion of the County is moderately warmer; high temperatures in the Livermore Amador Valley average 90°F in July.
----------------------	---