



ALTAMONT PASS WIND RESOURCE AREA REVISED CONDITIONAL USE PERMITS PEIR SCOPING MEETING

September 2, 2010

Dublin Public Library





Meeting Reminders

- Please turn cell phones off
- Check in at the sign-in table
- Pick up copies of meeting materials
- Fill out speaker/comment card to speak during public comment portion of meeting
- Drop it off at the end of the meeting
- Mail or email it to us later
- Hold all comments and questions until the end of the presentation



Meeting Agenda

- Introductions and Meeting Purpose
- Presentation
 - Overview of Environmental Review Process
 - Overview of APWRA Conservation Plan
 - Revised Conditional Use Permits
 - 95MW Summit Wind Project
 - 135.7MW NextEra Wind Repowering Project
- Public Comment
- Closing Remarks



Introductions

- Alameda Co. Community Development Agency
- Altamont Winds (Project Proponent)
- NextEra (Project Proponent)
- Project Team Responsibilities



Meeting Purpose

- Hear public comment on proposed scope and focus of the environmental impact report for the revised Conditional Use Permits for repowering and continued maintenance and operation of wind turbines in Alameda County
- Gather public input on:
 - Environmental effects of the Proposed Project
 - Methods of assessment of the Proposed Project
 - Mitigation measures to reduce the impacts of the alternatives to the Proposed Project



Overview of Environmental Review Process



California Environmental Quality Act

California Environmental Quality Act (CEQA)

- Foundation of environmental law and policy in California.
- Applies to all discretionary activities proposed to be carried out or approved by California public agencies, including state, regional, county and local agencies (unless an exemption applies).
- CEQA also applies to private activities that require discretionary governmental approvals



California Environmental Quality Act

California Environmental Quality Act (con't)

- Wind projects require conditional use permits to operate in Alameda County
- Projects require environmental review under CEQA before CUPs can be granted
- For proposed repowering projects within Alameda County, CEQA is implemented by the Alameda County Community Development Agency



California Environmental Quality Act

CEQA Objectives

- Present environmental impacts of proposed projects
- Identify ways to avoid or reduce environmental impacts
- Support the agency decision-making process
- Encourage public participation
- Enhance interagency coordination



California Environmental Quality Act

Environmental Impact Report (EIR)

- Detailed description of project and environment
- Identify potential environmental effects
- Identify ways to avoid or reduce significant environmental effects through mitigation
- Evaluate project alternatives



California Environmental Quality Act

Program EIR

- Program EIR (PEIR) used to evaluate series of actions that are:
 - Related geographically
 - Parts of a chain of contemplated actions
 - Connected as part of a continuing program
 - Carried out under same authorization statute or regulatory authority
 - Similar in resulting environmental impacts and associated mitigation
- Environmental review of Revised CUPs evaluated in PEIR (addition of other projects is not precluded)



California Environmental Quality Act

Program EIR

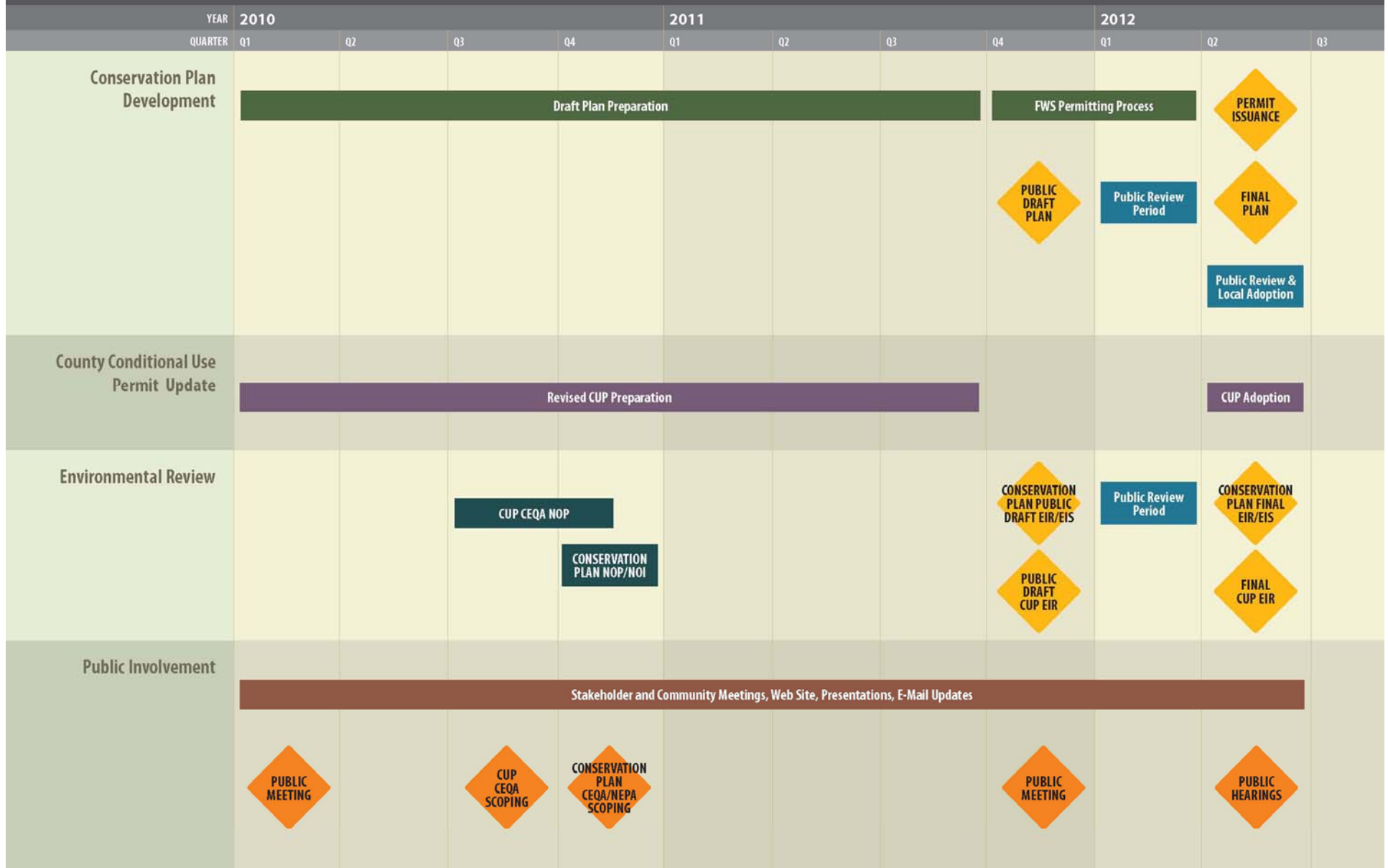
- Revised CUPs will be evaluated in a Program EIR used to evaluate series of actions that are:
 - Related geographically
 - Parts of a chain of contemplated actions
 - Connected as part of a continuing program
 - Carried out under same authorization statute or regulatory authority
 - Similar in resulting environmental impacts and associated mitigation



Environmental Review Schedule

- Notice of Preparation – August 23, 2010
- Public Scoping Meeting – September 2, 2010
- Scoping Period Ends – October 8, 2010
- Public Review of Draft PEIR – Spring 2011
- Release of Final PEIR – Late Fall 2011
- Certification of Final PEIR – Spring 2012
- Begin Construction – 2012 to 2013

Estimated Project Schedule

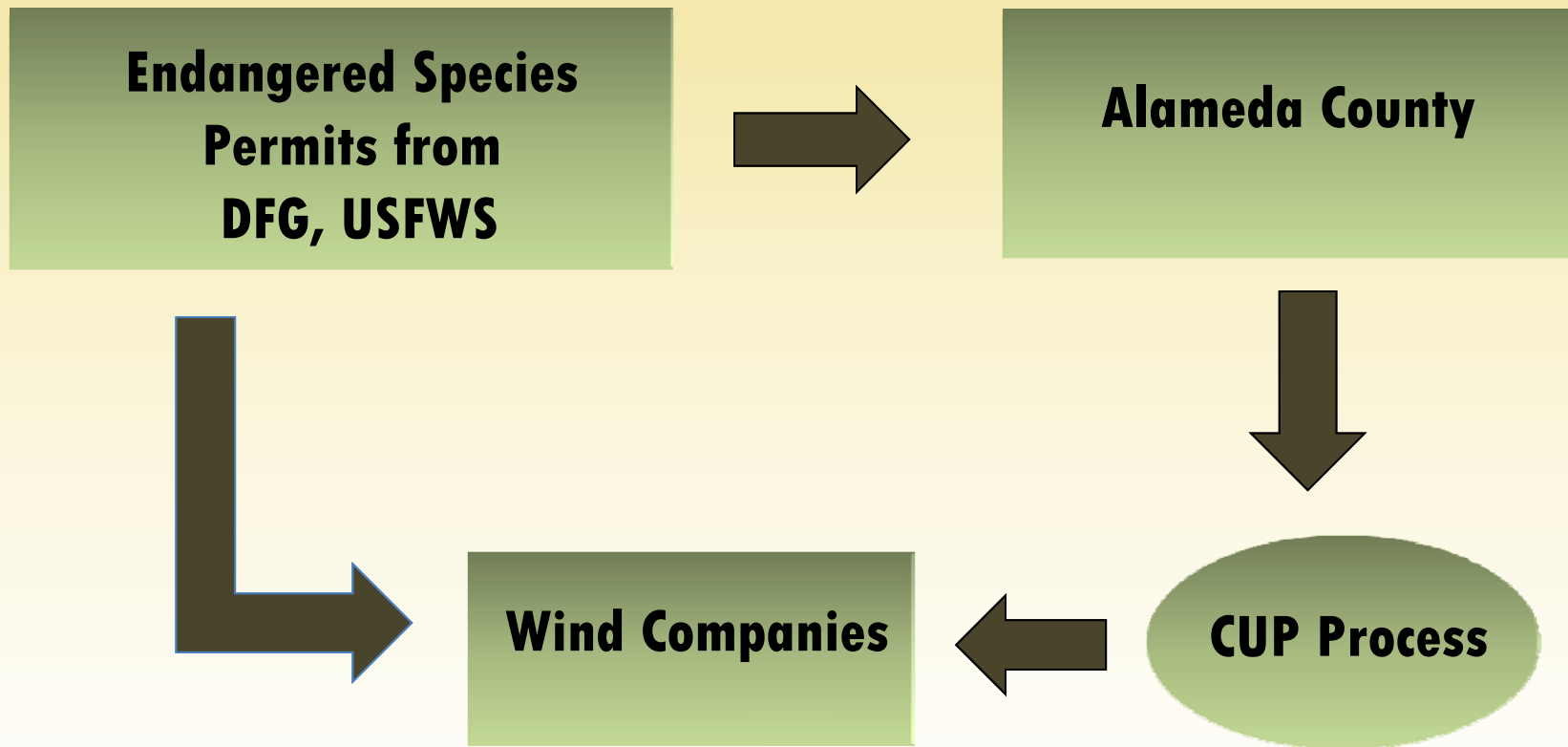




Relationship of Revised CUP to Conservation Plan

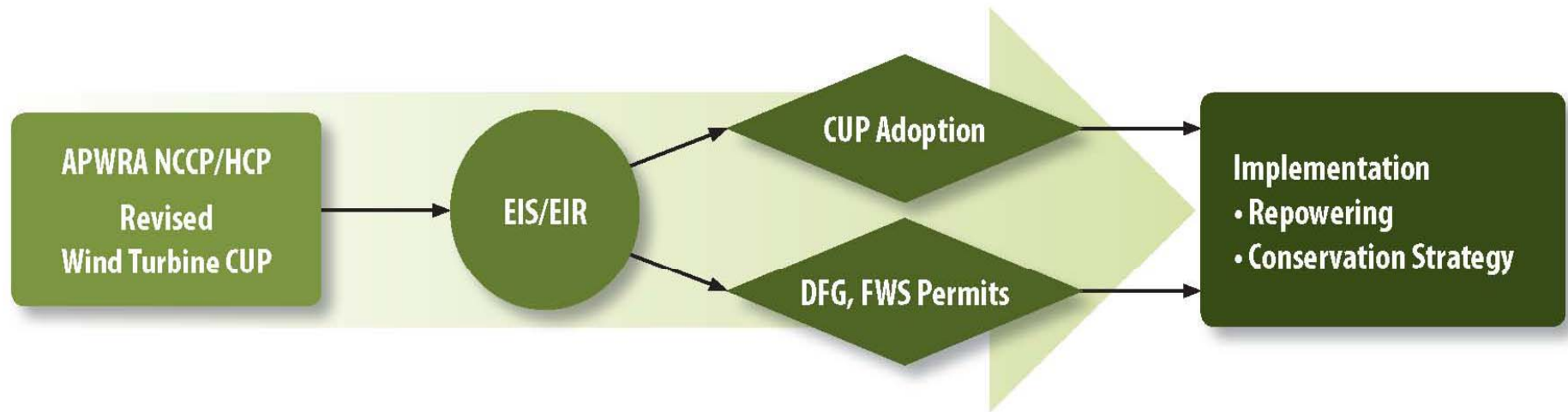


Relationship of Revised CUP to Conservation Plan





Overall Conservation Plan, CUP, and EIR Framework



* CUP = Conditional Use Permit

* NCCP/HCP = Natural Community Conservation Plan/Habitat Conservation Plan



Relationship of Revised CUP to Conservation Plan

- Conservation Plan requires environmental review under both CEQA and National Environmental Policy Act (NEPA)
 - Due to issuance of federal permits
 - Environmental Impact Statement (EIS) must be prepared under NEPA
- Conservation Plan CEQA/NEPA process combined to streamline environmental review
 - Joint Program EIR/EIS will be prepared
 - Additional scoping opportunity in late fall
- All comments will be accepted today



Relationship of Revised CUP to Conservation Plan

- Revised CUPs require CEQA environmental review because:
 - County adoption of Revised CUPs
 - County adoption Conservation Plan'
 - Issuance of state permits by Department of Fish and Game (DFG)
- Comments on both environmental review processes will be accepted today



Overview of APWRA Conservation Plan



APWRA Conservation Plan Overview

- “Conservation Plan” collectively includes:
 - Habitat Conservation Plan (HCP)
 - Natural Community Conservation Plan (NCCP)
- Conservation Plan planning area covers 185,000 acres in Eastern Alameda County and a portion of Contra Costa County

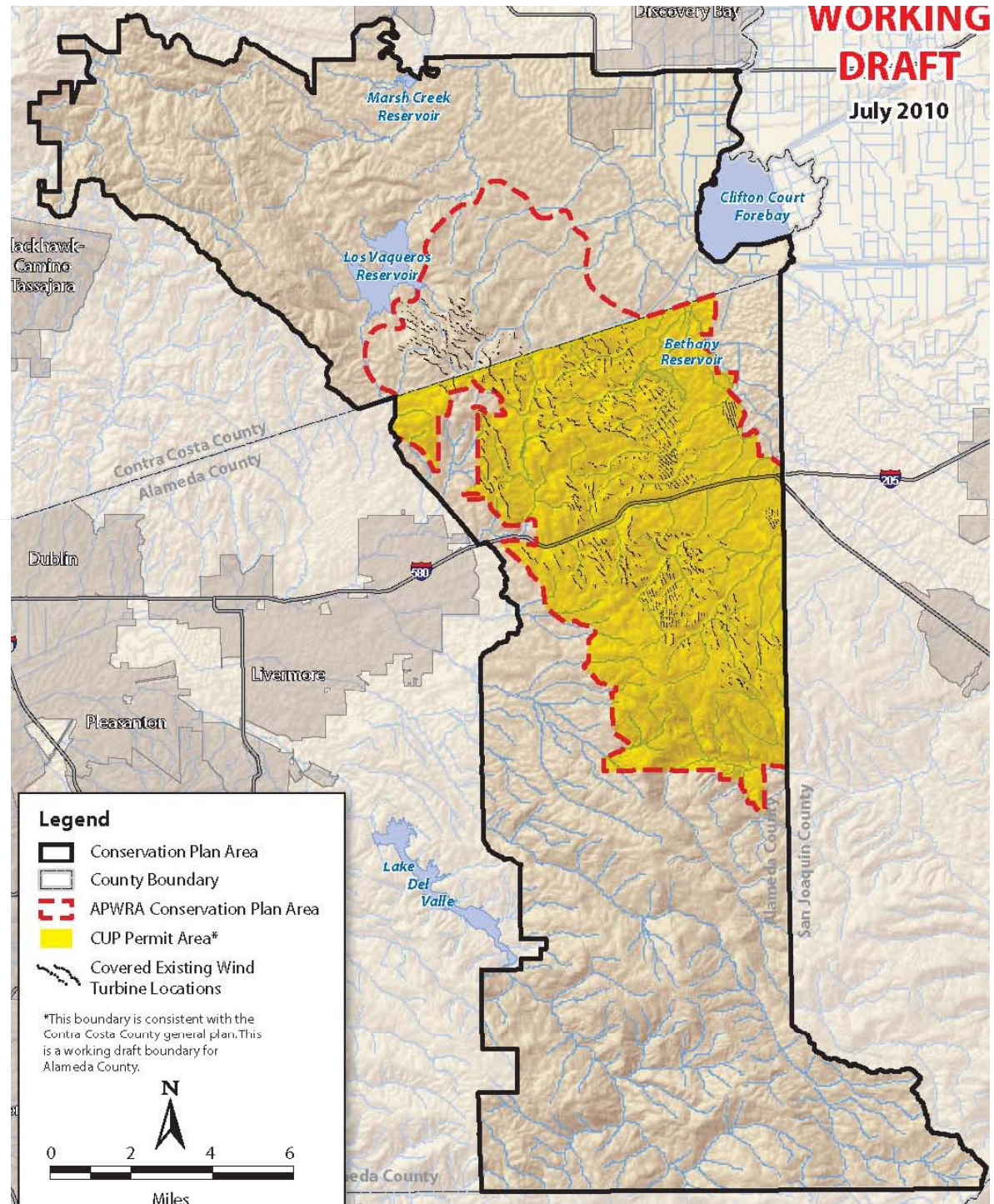


APWRA Conservation Plan Overview

- “APWRA” is subset of 55,507 acre area where wind turbine operations occur
- Wind companies operating in the Alameda County portion of APWRA ONLY are covered under CUPs
 - Other wind companies operating in APWRA are not covered by current or Revised CUPs

Conservation Plan
Planning Area:
185,000 acre

APWRA:
55,507 acres





APWRA Conservation Plan Overview

- Implementing Conservation Plan requires:
 - Federal permits from U.S. Fish and Wildlife Service (USFWS)
 - State permits from DFG
- Conservation Plan intends to:
 - Conserve avian and terrestrial species affected by existing and future wind power facilities in APWRA



APWRA Conservation Plan Overview

Conservation Plan Objectives

- Minimize impacts on birds and bats caused by wind turbine operation
- Mitigate unavoidable impacts
- Promote long-term conservation of avian and terrestrial species affected by wind energy generation activities in the APWRA
- Continue allowing wind energy generation in the APWRA



APWRA Conservation Plan Overview

Summary of Covered Activities

- Wind Company Activities
 - Repowering activities, Reclamation activities, Operations and Maintenance activities
- County Activities
 - Revised CUPs
- Conservation Strategy Implementation Activities
 - Management, monitoring, enhancement, restoration on reserve lands only
- Activities Not Covered
 - Maintenance of utility transmission lines, rural or urban development



Revised Conditional Use Permits



Revised Conditional Use Permits

Overview

- Modification of existing CUPs for wind power repowering, operation and maintenance activities within Alameda County portion of the APWRA
- Revised CUPs modified consistent with conservation strategy in APWRA Conservation Plan
- CUP updates may include components unrelated to the conservation strategy that may have environmental impacts (such as fire safety and noise)



Revised Conditional Use Permits

| Current | Existing | Alameda Repowered County | Change |
|---|----------|-----------------------------|--------|
| Maximum Permitted | 583 MW | 416 MW | |
| Number of Installed Turbines | 4,800 | 4,178 | |
| Capacity Factor | < 20% | | |
| Percent of total CA Power Generation (2007) | 0.4% | | |
| Percent of total CA Renewable Generation (2007) | 3.5% | | |
| Percent of total CA Wind Generation (2007) | 18.4% | | |



Revised Conditional Use Permits

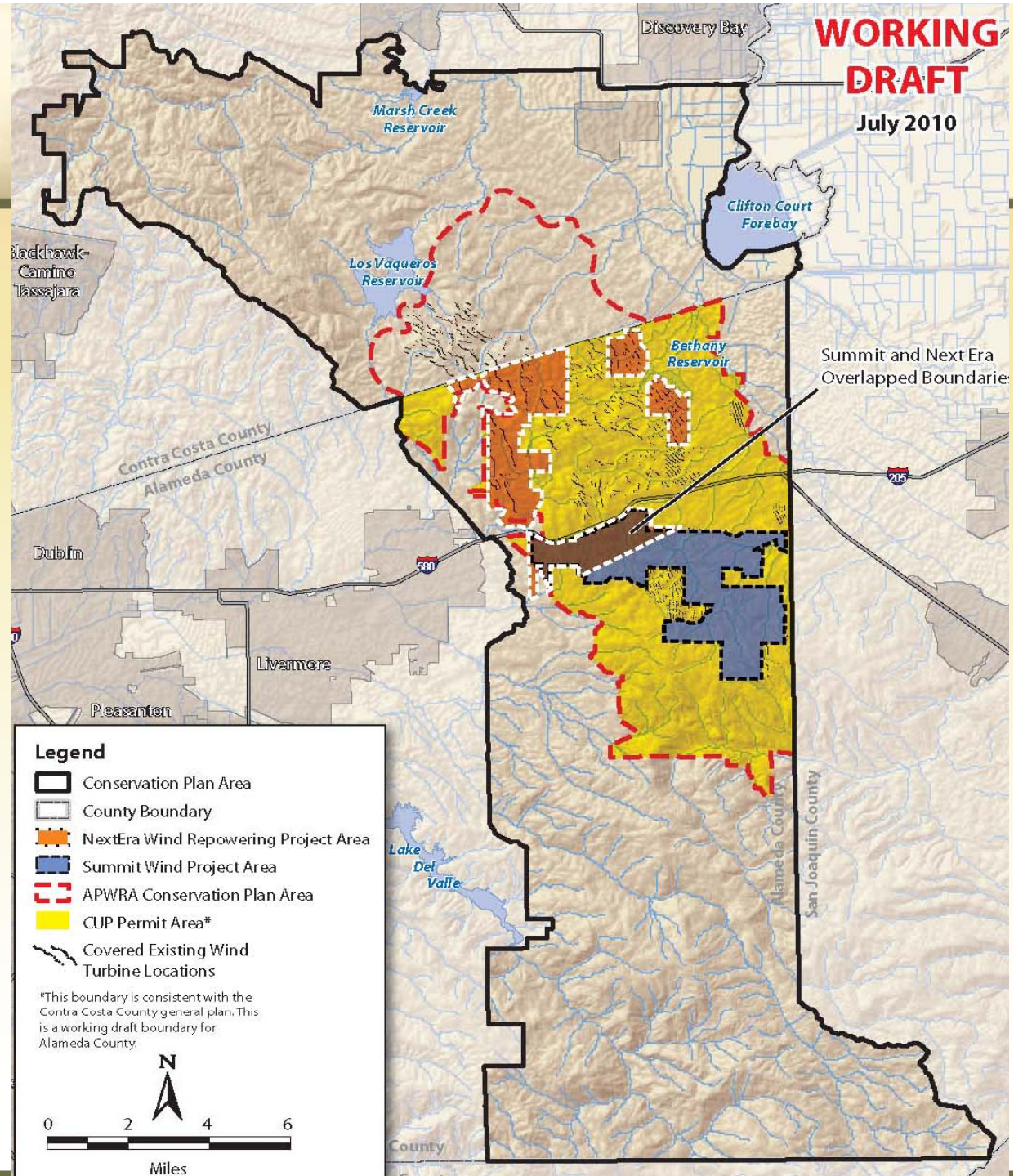
| Proposed Revisions | Existing | Repowered | Change |
|---|----------|-----------|--------|
| Maximum Permitted | 583 MW | 583 MW | 0% |
| Number of Installed Turbines | 4,800 | ≈900 | -81% |
| Capacity Factor | < 20% | 33% | +32% |
| Percent of total CA Power Generation (2007) | 0.4% | 0.6% | +34% |
| Percent of total CA Renewable Generation (2007) | 3.5% | 4.7% | +34% |
| Percent of total CA Wind Generation (2007) | 18.4% | 24.7% | +34% |



Proposed Projects under Revised CUPs



Summit Wind and NextEra Wind Repowering Project Area within APWRA





95 MW Summit Wind Project

- Altamont Winds, existing CUP permittee, proposes 95 MW Summit Wind Project (Summit project) for inclusion in Revised CUP
- Summit project will replace existing wind farm equipment with modern wind turbines and deliver wind generated electrical energy to the Pacific Gas & Electric Company (PG&E)



95 MW Summit Wind Project

Existing Conditions

- Summit project located within 7,650-acre area of the APWRA
- Existing wind farms (Altamont Winds)
 - Approximately 920 wind turbines
 - 60 feet to 140 feet in height
 - Vary from 100kW to 370kW capacities



95 MW Summit Wind Project

Project Components, Implemented Sequentially

(1) Decommissioning and Reclamation of Existing Wind Farm

- Existing wind turbines and supporting facilities permanently taken out of service, dismantled and physically removed

(2) New wind farm construction

- Replace 920 wind turbines with sixty (60) turbines rated 1,600 kW each
- Construct similar supporting infrastructure to existing wind farm with 21 to 34.5 kV electric collection system
- Replace new permanent meteorological towers 262 feet in height



95 MW Summit Wind Project

(3) Operations and Maintenance

- Operated and maintained by PowerWorks LLC, affiliate of Altamont Winds, currently operate and maintain over 900 wind turbines in the APWRA
- Operations conducted using remote control system for continuous monitoring and operation of collective wind farm and individual wind turbines
- Maintenance to include both scheduled preventive and unscheduled repair work



95 MW Summit Wind Project

(4) Future Decommissioning and Reclamation

- Modern wind turbines typical lifetime of 20 years, but usually extended with proper maintenance
- New wind farm decommissioned and reclaimed when no longer operable

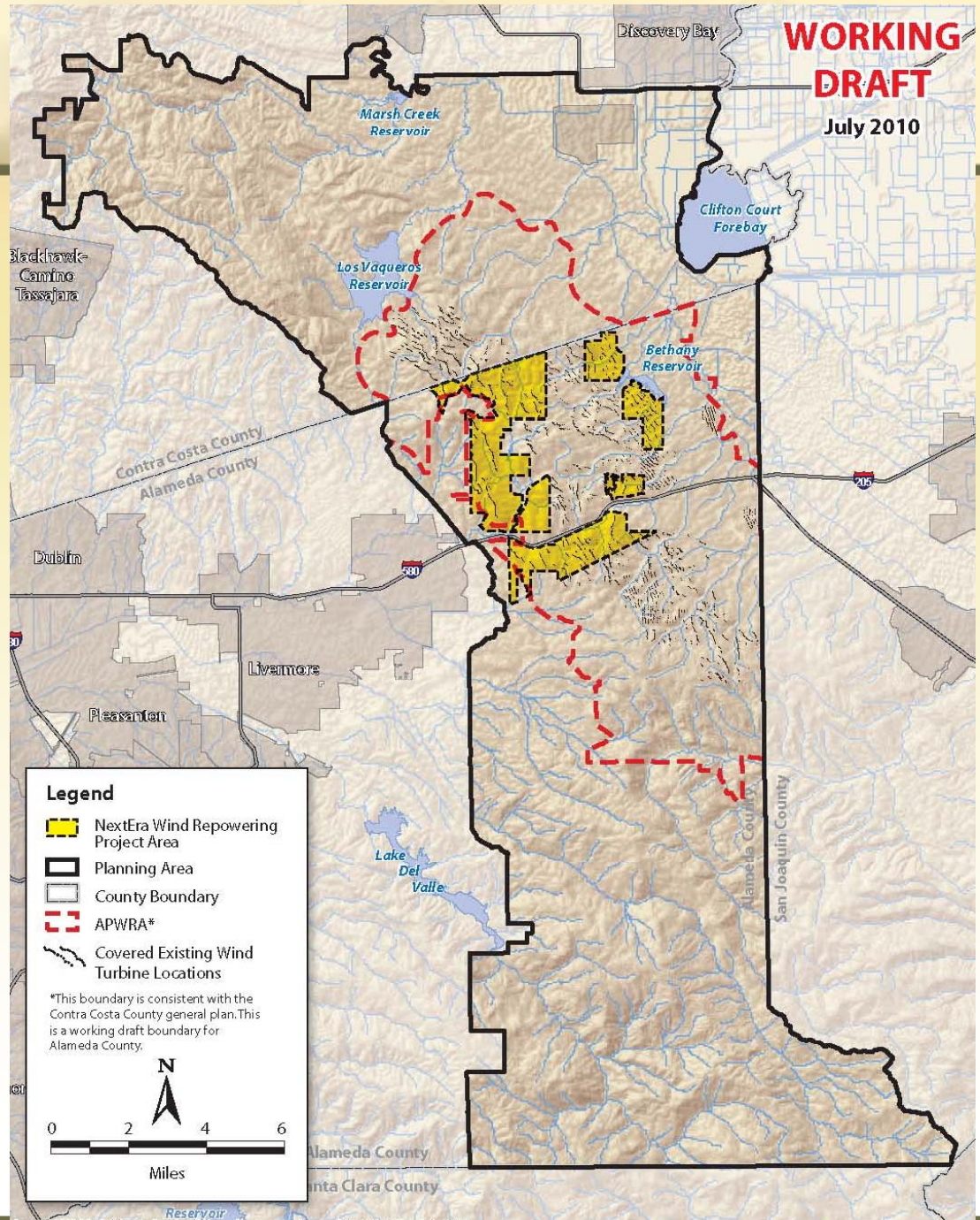


NextEra Wind Repowering Project

- NextEra Energy Resources, existing CUP permittee, proposes NextEra Wind Repowering Project (NextEra project) for inclusion in Revised CUP
- NextEra project proposes replacing existing wind farm equipment with fewer and more efficient modern wind turbines to provide clean, renewable electric energy to meet state power demands



NextEra Wind Repowering Project within APWRA



Source: USGS; California Dept. of Water Resources; Census 2000; NextEra; July 2010



NextEra Wind Repowering Project

Existing Conditions

- NextEra project located within 8,950-acre area of the larger APWRA
- Existing wind farm (NextEra)
 - Approximately 1,653 wind turbines
 - 60 feet to 140 feet in height
 - Vary from 100kW to 400kW capacities.



NextEra Wind Repowering Project

Project Components, Implemented Sequentially

(1) Decommissioning and Reclamation of Existing Wind Farm

(2) New wind farm construction

- Replace 1,653 wind turbines with fifty-nine (59) turbines rated 2,300 kW each
- Construct similar supporting infrastructure to existing wind farm with 34.5 kV electric collection system
- Replace existing meteorological towers with new, permanent towers 262 feet in height



NextEra Wind Repowering Project

(3) Operations and Maintenance

- Operations conducted at existing, off-site facilities
- Control system that allows remote, continuous monitoring to be used
- Maintenance to include both scheduled preventive and unscheduled repair work



NextEra Wind Repowering Project

(4) Future Decommissioning and Reclamation

- Anticipated life of wind farm could be 30+ years with proper maintenance
- New wind farm decommissioned and reclaimed when no longer operable



Public Comments



Commenting Procedures

- Focus comments on revised CUP
- Submit comment cards to speak
- Wait until your name is called
- Speak into the microphone and state your name clearly for court reporter
- Limit comments to 3 minutes
- Use comment forms for more extensive input and return to County by 5pm, October 8, 2010



Closing Remarks



- Provide Scoping Comments by October 8, 2010
- Provide comments via comment card, email or mail
- **CUP EIR Website:** www.acgov.org/cda/planning/landuseprojects/currentprojects.htm
- **Project Email:** APWRACUPEIR@acgov.org