

# PUBLIC POLICY PLATFORM 2019

## VISION

The Alameda County Early Care and Education Planning Council is a guiding force for excellence in early care and education of all children and regularly sought out for our expertise by local, state and national decision makers.

## MISSION

The Alameda County Early Care and Education Planning Council advises and makes recommendations to policymakers to ensure that all children and families have access to quality child care that educates children and enriches their lives.

## LONG TERM DESIRED RESULT

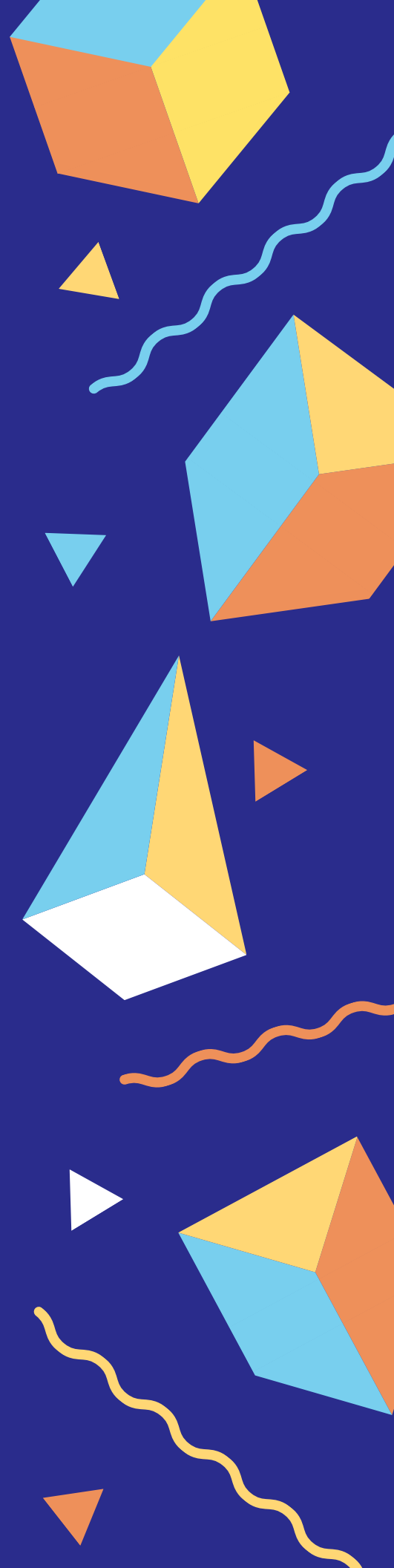
All Alameda County Children Enter School Ready to Learn\*

## STRATEGIES

1. Initiate and promote efforts to protect and increase local, state, federal and private funding for Early Care and Education (ECE), prioritizing infants and toddlers.
2. Monitor, take positions and make recommendations on federal, state and local issues, legislation, regulations, administration and initiatives that significantly impact ECE including but not limited to racial disparities in quality, access and affordability.
3. Support increasing spectrum of family engagement and family leadership opportunities in ECE.
4. Advocate for family centered, inclusive, developmentally and culturally\*\* appropriate practices for all children in all Early Care and Education programs.

\* Definition of Ready to Learn: Self-care and motor skills, self-regulation, social expression, and pre-kindergarten academics such as recognizes letters, shapes, colors, rhyming words, as defined by Applied Survey Research (ASR) through developmentally appropriate practices.

\*\* Quality programs have research based philosophy, educators continually learning, formal and informal program evaluation, support parents' need for employment or education, consider community needs and may participate in Quality Rating and Improvement System



5. Specifically, in 2019 The Planning Council will advocate to:
  - A. Support legislative efforts to further align and ensure successful implementation of the AB 833 pilot, scaling policies covered in the pilot to the bay area region and across the state.
  - B. Significantly expand ECE funding, access and services for all income eligible children and families with special focus on:
    - a. Equity
    - b. Meeting the needs of:
      - i. Infants and toddlers;
      - ii. Vulnerable children and families, including: immigrants, those experiencing homelessness, children with special needs, or families connected to the Child Welfare system;
    - c. Eradicating racial disparities and structural, policy and institutional barriers
    - d. Eliminating child care deserts

## ACCESS



## QUALITY



## HEALTH, SAFETY, & ENVIRONMENTAL HEALTH



## WORKFORCE



## SUPPORT SERVICES



- C. Protect and increase child care access for children with special needs, immigrant, homeless, and foster care families and children in poverty
- D. Promote consumer education and utilization of CalWORKs child care including, but not limited to: simplified eligibility, increased service navigation, and coordination
- E. Continue to increase Standard Reimbursement and Regional Market Rates until these rates match the cost of care
- F. Streamline and create efficiencies such as coordinated regulatory, contracting and reimbursement processes within the current federal, state and local programs
- G. Integrate child care in County place based strategies that concentrate resources and investments in communities with the highest level of need
- H. Retain and protect 21st Century Learning Center funding
- I. Promote the restoration and refinement of the Centralized Eligibility List (CEL)
- J. Restore the Alternative Payment agency support services rate
- K. Advocate for 24 month eligibility redetermination for all child care subsidies

- L. Continue to improve quality in early care and education, addressing: facilities; health, safety and environmental health; workforce wages and professional development; and the Quality Rating and Improvement System
- M. Increase timely inspections, and frequency of Community Care Licensing visits to annual visits (aligns with County Social Services Agency)

- N. Increase ECE professional development including, but not limited to:
  - a. Dedicated paid days for training
  - b. Increased workforce compensation and benefits to reflect the professional work of the field
  - c. Education, succession planning, and career pathways

- O. Increase mental and behavioral health resources and connections with ECE programs
- P. Increase funding for navigators (including at Resource and Referral agencies) for vulnerable families
- Q. Increase funding for Local Planning Councils and preserve local flexibility
- R. Support funders for infrastructures which promote collective impact and systems alignment to better serve Alameda County's children and families

Note: "child care" and "early care and education" both refer to care of infants, toddlers, preschoolers and school age children by a licensed or legally license-exempt child care provider or program.