



**Alameda County State Contractors Meeting**  
**Thursday, January 18, 1-3pm**  
**Alameda County Office of Ed. 313 W. Winton Ave, Hayward**  
**Hosted by the Early Care and Education Planning Council**

**AGENDA**

- 1:00 – 1:15 Introductions, Announcements, Check-In
- 1:15 – 1:45 Budget and Legislative Update
- Governor's State Budget (Ellen)
  - Pilot Trailer bill
  - AB 752 Discussion (LaWanda)
    - Poll for interest in developing policy/guidelines
- 1:45 – 2:15 AB833 Pilot & Enrollment and Eligibility Workgroup (Lorita)
- Enrollment and Eligibility Workgroup Update
  - AB833 Update
  - Agencies with upcoming CMRs
  - Reviewing/Updating Parent Handbook
- 2:15 – 2:45 Updates & Reports
- Overview of ECE Expansion Initiative
    - Initiative Update (Rozy)
  - Green Child Care Program (Camyle)
  - School District Licensing (LaWanda)
  - Trauma Informed Care Practice (LaWanda)
  - Early Learning Network; Pre K–Third Grade Alignment (Neva)
- 2:45 – 3:00 Next Steps, Items for February Agenda

**2016 Steering Committee:**

Rosemary Almand  
Margaret Bartelt  
Amapola Beern  
Tracey Black  
Leah Branson

Alexandra Caraballo  
Jenna Churchman

Franca Cioria

Kim Di Giacomo

Mary Anne Doan

Clarissa Doutherd

Relena D. Ellis

Diana Engel

Carlota Escarez

Carmen Gonzalez

**Renee Herzfeld, Chair Elect**

Margaret Jerene

Judy Kriege

Laura McNair

Jean Monroe

Melanie Mueller

Sandra Rodriguez

Sandra Taylor

Carol Thompson

**Veronica Ufoegbune, Chair**

**Planning Council Staff:**

**LaWanda Wesley**

ECE Quality Manager

LPC Program Coordinator

Phone: 510-208-9651

[LaWanda.Wesley@acgov.org](mailto:LaWanda.Wesley@acgov.org)

**Ellen Dektar**

Senior Management Analyst

Phone: 510-208-9578

[ellen.dektar@acgov.org](mailto:ellen.dektar@acgov.org)

**Michael Panori**

Support

Phone: 510-208-9620

[michael.panori@acgov.org](mailto:michael.panori@acgov.org)



1401 Lakeside Drive, #1116

Oakland, CA 94612

Phone: 510-208-9620

Fax: 510-208-9579

[www.acgov.org/childcare](http://www.acgov.org/childcare)





## Overview of Governor's Proposed State Budget Impact on Early Care and Education As of January 12, 2018

### Summary

The Governor's Budget proposes two main new early care and education (ECE) expenditures: a 2.8% rate increase for state subsidized (Title 5) centers; and a new, \$167 million competitive pilot program which emphasizes inclusive child care for children 0-5. It also continues prior year commitments to increase ECE spaces and rates. This is a better initial proposal than the field has had in recent years; last January the Governor proposed to "pause" prior year rate and slot increases and included a program proposal that was not supported by our County's ECE field.

Last May, the California Budget Center estimated that California has 67,000 fewer subsidized child care slots than it did in 2007-2008. According to the California Budget Center, current ECE funding is \$500 million below prerecession levels, after adjusting for inflation. In Alameda County, 69% of children with working parents don't have access to a child care space, and thousands are on waiting lists.

### 2.8% Rate Increase for Title 5 Contractors and Sustains Voucher Rate Increase

The budget proposal earmarks \$47.7 million to increase the Title 5 contractor rate by 2.8% and \$34.2 million to make permanent the existing limited-term Regional Market Reimbursement Rate hold harmless provision.

In Alameda County, this rate increase would bring the daily rates to this level:

- \$49.87 for infants
- \$50.47 for preschoolers

The annualized rate would be:

- \$20,347 for infants
- \$16,756 for toddlers
- \$12,113 for preschoolers

LPC Position: Likely support. California has been making steady progress in improving the rates for ECE over the past several years. It has been estimated that the true cost of a quality preschool program is around \$17,000. So while we are making progress, there is still more ground to cover to support the fiscal viability of state subsidized programs.

### \$167 Million Competitive Program for Inclusive Child Care for 0-5 year olds

This program is supported with one time funding to increase the availability of inclusive early education and care for children aged 0-5, especially in low-income areas and in areas with relatively low access to care. It is not limited to serving children with special needs, but they will be prioritized in the pilots.

LPC Position: Likely support

As of 1/12/2018

Ellen Dektar, 510-208-9578 or Angie Garling, 510-208-9675

## CalWORKs ECE and Other Significant Funding Adjustments

- Net increase of \$5.2 million non-Proposition 98 General Fund in 2018-2019 to reflect slight increases in the number of CalWORKs child care cases and slight decreases in the estimated cost of care.
- Decrease of federal TANF funds from \$120.1 million in 2017-2018 to \$70.6 million in 2018-2019.

## Continuation of Previous Budget Agreement

- \$13.3 million to make permanent a hold harmless provision in the last budget that accompanied an updated rate for voucher programs.
- \$8.5 million for increase in State Preschools run by Local Education Agencies, or 2,969 new spaces starting in April, 2018. This brings total to 8,877 preschool slots created in last three years.

## ECE Related Budget Proposals

ECE staff could benefit from \$120 million in budget for creation of "fully online" community college.

## Pilot Related Budget Language

The Budget is expected to be a vehicle for a list of policy changes for "Pilot counties," including Alameda County, with expected policy changes to include:

- Eliminating requirement that 50% of CSPP children are 4 years old (statewide change)
- CSPP can serve children turning 2 years 9 months old any time throughout year (statewide change)
- Ability to use Local Planning Council required Needs Assessment for Pilot data – with some additional data

## Outstanding Issues from 2017 Budget

The final 2017 budget proposed reviewing and reducing licensing requirements for state preschool programs using facilities that meet TK facility standards, specifically K-12 public school buildings. It required a Legislative Analyst run task force to make recommendations that will go into effect automatically in July, 2019. The field is awaiting the task force report.

LPC Position: Oppose. The Planning Council is concerned about losing health and safety protections for California's youngest learners. Preschool age children are not enrolled in the student body. They are smaller students who sometimes require different facilities such as smaller play structures or bathrooms with smaller fixtures and ability for visual supervision by teachers and have other protections in licensing regulations such as a consumer protection and transparency website and the ability of consumers to file a complaint and have a program inspected within ten days. Community Care Licensing also has specific space requirements for young children and specifications about appropriate age groupings on playgrounds. The policy was not heard in the education or any other policy committee, it was pushed through the budget process.

## Conclusion

Early care and education access and reimbursement rates will still continue to be challenges for both parents and providers in Alameda County due to great child care demand and a high cost of living. However, the budget is continuing and modestly increasing inroads made in previous years.

1/18/18

**Update from Lorita on AB833 Pilot & Enrollment and Eligibility Workgroup:**

*In October 2017 our Governor signed all 4 Pilot Bills, one of which had Alameda County's Pilot clean-up language. As of January 1, 2018 all of our AP agencies are able to practice fully in the Pilot and implement all Pilot regulations and our Part-Day / Part-Year CSPP providers are able to give their families 24 month eligibility.*

*With the inclusion of the AP programs and some other changes at the State level, our County Pilot Handbook had to be revised as well as some of our common forms. We have held a training specifically for the AP Program agencies to bring them up to date with what the center based programs have been doing in the last year.*

*Next Thursday would have been our normally scheduled meeting, however CDE will be holding webinars related to eligibility and enrollment. So in lieu of holding our meeting, we will be having a CDE Webinar Gathering so that those who are able to, can meet to participate in the webinar together. YMCA has graciously allowed us to use their multi-purpose room at their Ralph Hawley location in Emeryville for this gathering.*

*In conjunction with the other 3 Pilot Counties, San Mateo, San Francisco, and Santa Clara, who are currently implementing a Pilot, a Four County Pilot Training will be taking place on Monday February 12th from 10am-3pm at the San Mateo County Office of Education. This training will be limited to 2 representatives per agency. We are very excited to be having this training with the other counties. This will be a great opportunity for those doing eligibility and enrollment to share their experiences, the successes, and the challenges.*

*Alameda County Eligibility and Enrollment Work Group meeting takes place on the last Thursday of each month from 10am-noon, alternating locations between 4Cs in Hayward and BANANAS in Oakland. Currently our meeting group size is starting to average 40 participants which has us looking for a new meeting location. Although our meeting focuses only on eligibility and enrollment regulations for Title 5 programs, any one is welcomed to attend. Representatives for Title 5 programs in neighboring counties have been attending as well (San Francisco, San Mateo, Santa Clara, Monterey, Contra Costa, and Sonoma).*

*For more information, or if you would like to get onto our email list, please send Lorita Riga an email at [LoritaRiga@gmail.com](mailto:LoritaRiga@gmail.com)*



# Green Child Care Program



Early Care & Education  
Planning Council

We promote

## environmental health and sustainable habits

in children ages 0-5  
through...

...Engaging hands on lessons with "Rocky the recycling raccoon" that teach children about the consequences of waste, and proper waste sorting using the 4R's.

Staff support in the form of free waste assessments to possibly lower your waste bill, free bins, and access to county discounts on certified "green" cleaning products

Free waste bin signage, green bin tool-kits that include live worms, and MUCH more to support green efforts at YOUR program!

Protect children's health using methods and products that are safe



Become a recognized green institution in your community!

Save money and save the planet!

Contact Camyle Allen at [camyle.allen@acgov.org](mailto:camyle.allen@acgov.org) to learn more!








# **Early Childhood and ACEs: Part 2**

## **Trauma Informed Care Practice**



**Come join us for Early Childhood and ACEs: Part 2 - Trauma Informed Practice!!!** As we discussed last spring, children who experience trauma may exhibit behaviors that sometimes impact the classroom climate. Early Childhood and ACEs: Part 2 - Trauma Informed Practice will **transition from trauma informed knowledge and understanding to applied classroom practices** that focuses on adult-child interactions, understanding the child, and ways to provision the classroom environment. Participants will explore strategies to support both teachers and children in managing their trauma triggers that will lead towards resilience building and creating a sensitive and responsive trauma informed classroom climate.



ALAMEDA COUNTY  
Early Care & Education  
Planning Council

### **Facilitators**

Julie Nicholson, PhD  
Linda Perez, PhD  
LaWanda Wesley, EdD

**Registration is Required:** <https://2018aces.eventbrite.com>

A light breakfast and lunch will be included in the registration fee - \$25 per person

*Register by January 17th • Limited Scholarships Available*

**January 27, 2018**  
**8:30 am – 2:30 pm**

**Alameda County Office of Education**  
**313 W. Winton Avenue, Hayward, CA 94544**

*Professional Development Certificate available for completion (5 hours)*

Contact: Katie Honegger at [katieh@4c-alameda.org](mailto:katieh@4c-alameda.org) for additional information.



**Save the Dates!**

**Alameda County Early Learning  
Summer Institute 2018**



**Intended Audience Includes:  
Preschool, Transitional  
Kindergarten and Kindergarten  
Teachers and  
Para- Professionals**

This institute (formerly the TK Summer Institute) will offer professional development focused on STEAM + Literacy and Language. Be on the lookout for more information in the coming months.



**Mills College  
5000 MacArthur Blvd.  
Oakland**



**June 19-21, 2018  
8:30am -3:30pm**



Presented in partnership through the Alameda County Early Care and Education Planning Council, the Alameda County Office of Education and the California School Age Consortium



**A Professional Learning  
Community  
for 1st-3rd Grade Teachers**

**Spark! A Five Session PLC to Improve  
1st - 3rd Grade Learning Outcomes**



The contents of the PLC will be driven by participant needs and interests, but will likely include:

- explorations of equity and access in the classroom,
- practices that promote student engagement, especially in the core standards,
- development of social and emotional skills,
- maintaining work/life balance to keep us thriving as teachers

The ACOE is hosting a series of professional development opportunities facilitated by Blue Thistle Consulting for 1st - 3rd grade teachers who are interested in exploring instruction and facilitation strategies and practices that promote increased student engagement and inclusion.



**Location: ACOE**  
313 W. Winton Ave.  
Hayward, CA 94544



**PLC Dates:**

The five sessions will occur from 4pm to 7pm:

- January 31, February 21,
- March 21, April 4 & May 9



**Sign up!** [tinyurl.com/SPARK-1-3-Registration](https://tinyurl.com/SPARK-1-3-Registration)



There is no cost to participants for this series. Dinner will be provided.

Presented by CORE Learning, a department of the Alameda County Office of Education, in partnership with Blue Thistle Consulting.



# CA Foundations & Frameworks Geometry

Gain understanding of key concepts from the California Preschool Learning Foundations Curriculum Framework , Volume 1



**ACOE**  
**313 W. Winton Ave.**  
**Hayward, 94544**  
**Room 142**

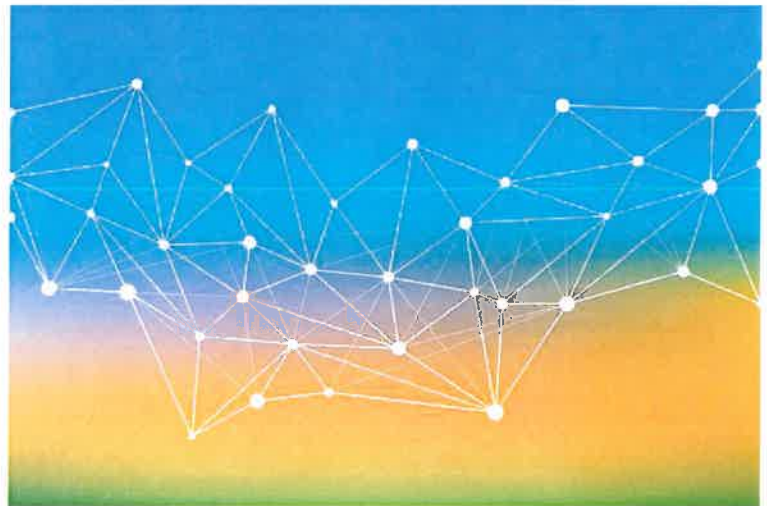


**January 31, 2018**  
**3:30-7:00 pm**  
**\*A light dinner will be provided**

Audience: Preschool and Transitional Kindergarten Teachers and Coaches

At this workshop participants will:

- Become familiar with the mathematics foundation with an emphasis on the Geometry strand
- Understand how the DRPD 10 and the NCTM Standards relate to the mathematics foundations
- Explore strategies to make geometry come to life in the classroom
- Plan to implement content in your own classroom



**Sign up!**

**ACOE: CPIN Geometry Registration**



Questions? Contact Neva Bandelow,  
Early Learning Program Manager  
nbandelow@acoe.org





# CA Foundations & Frameworks Language & Literacy Overview

Gain understanding of key concepts from the California Preschool Learning Foundations Curriculum Framework , Volume 1, Language & Literacy Domain.



**ACOE**  
**313 W. Winton Ave.**  
**Hayward, 94544**  
**Room 142**



**April 4, 2018**  
**3:30-7:00 pm**  
**\*A light dinner will be provided**

**Audience: Preschool and Transitional Kindergarten Teachers and Coaches**

**At this workshop participants will:**

- Become familiar with the language and literacy sections in the Preschool Learning Foundations (PLF) and Preschool Curriculum Framework (PCF)
- Consider the relationship between the language and literacy domain, the English-language development domain, and the DRPD-2015.
- Consider how to use the PCF to support all learners



**Sign up!**

**ACOE: CPIN L&L Registration**



Questions? Contact Neva Bandelow,  
Early Learning Program Manager  
[nbandelow@acoe.org](mailto:nbandelow@acoe.org)



**ALAMEDA COUNTY  
OFFICE OF EDUCATION**  
L. Karen Monroe, Superintendent

Co-Presented by the California Preschool Instructional Network (CPIN) & ACOE

