



Alameda County Consultant Conference

Pump Station Condition Assessment and Rehabilitation Study and Pump
Performance Evaluations

DECEMBER 2, 2016

Objectives & Overview

Alameda County seeks a qualified Consultant Team to perform pump station assessments. This consultant conference will cover:

- General discussion about project, RFQ, and procurement process
- Review of SLEB requirements
- Review of Important Dates/Deadlines
- Q and A
- Visits to two (2) Pump Station sites

Alameda County Flood Zone Map



Quick Facts:

9 Zones

170,000+ Acres of Watershed

22 Pump Stations

90+/- Pumps

62 years = approximate age of oldest pump

Pump Station RFQ & Procurement Process

This is a 2-step procurement that includes an **RFQ Phase** followed by an **RFP Phase**.

- **RFQ Phase** focuses on evaluation of team qualifications. Up to 4 consultant teams will be invited to submit a Proposal.
- **RFP Phase** focuses on evaluation of team approach and work plan. Only the short-listed consultant teams will submit a Proposal.
- RFQ and RFP have unique submittal requirements

Scope of Project

1. Program and Project Management
2. Existing Data Collection and Review
3. Assessment Criteria and Condition Rating System
4. Field Inspection Plan
5. Site Visits and Condition Assessments
6. Pump Performance Evaluation
7. Energy Audit and Analysis
8. Recommendations and Final Report
9. Comprehensive Health, Safety, and Security

Optional Scope Items

10. Design and Preparation of Construction Documents

11. Construction Management and Construction Support Services

SLEB Requirements

- 20% of work must be performed by SLEBs (Small, Local, Emerging Businesses) as defined by the County
- County overview of SLEB program can be found at <http://acgov.org/auditor/sleb/overview.htm>
- Complete Attachment (c) to Exhibit A

Important Dates & Deadlines

2016

- **December 5 at 5:00 pm:** Deadline for submitting written questions
- **December 12:** RFQ Addendum Issued

2017

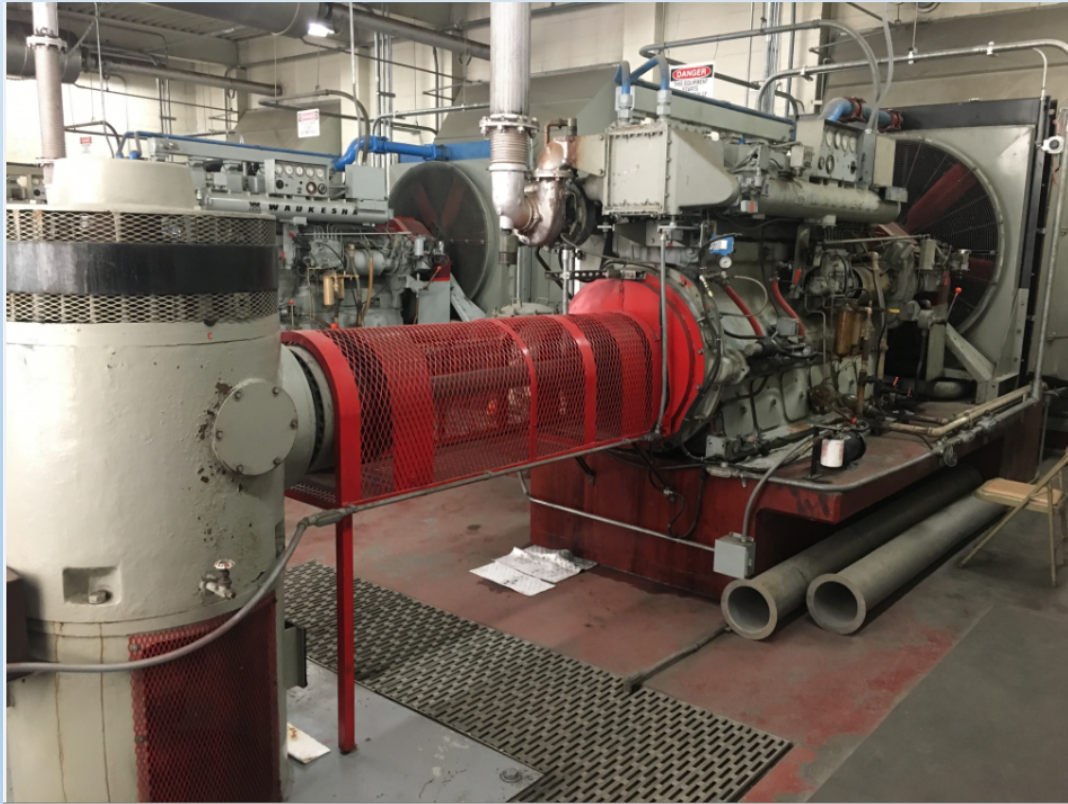
- **January 3 at 5:00 pm:** Deadline for submitting SOQ
- **January 10:** RFP issued to short-listed firms only*
- **January 16 at 5:00 pm:** Deadline for submitting written questions re: RFP
- **January 23:** RFP Addendum Issued
- **February 6 at 5:00 pm:** RFP Response Due
- **Week of February 13:** Oral Presentations/Interviews
- **March 21:** Contract Award/Start Date

** All dates after SOQ deadline are approximate and are subject to change.*

Site Visits

- Visits not mandatory but recommended
- Two Sites will be visited: *Ettie Street Pump Station* and *Industrial Parkway Station*.
 - 1st Site: Industrial Parkway (Hayward)
 - 2nd Site: Ettie Street (Oakland)
- Both sites have restricted access.
- Van available for those who would like a ride to sites.
- Maps available for those who would like to drive separately.

Industrial Parkway Station



Ettie Street Station



THANK YOU FOR ATTENDING!

This presentation and the sign-in sheet will be available online.

QUESTIONS?

Andy Otsuka, Procurement Manager

Alameda County Flood Control & Water Conservation District

399 Elmhurst Street, Room 113

Hayward, CA 94544

andy@acpwa.org

