

PRODUCTS AND FINISHES SCHEDULE

Code	Description	Product
Flooring		
SL1	Sheet Linoleum	Forbo Marmoleum or equal, with welded seams, color: Real 3236 Dark Bistre
SL2	Sheet Linoleum – 3 rd Floor	Forbo Marmoleum or equal, with welded seams, color: Vivace 3407 Donkey Island
C1	Carpet Tile	Shaw, Hand Drawn Collection: plank style – 18" x 36" carpet tiles, equal mix of Fine Point 5T113 and Lineweight 5T114; Color: 13505 Carbon
C2	Carpet Tile – Accent	Shaw, Hand Drawn Collection: plank style – 18" x 36" carpet tiles, Lineweight 5T114; Color: 13880 Sanguine
C3	Carpet Tile – Border	Shaw, Hand Drawn Collection: plank style – 18" x 36" carpet tiles, Lineweight 5T114; Color: 13505 Carbon
FT1	Porcelain Tile – Exterior	Tilleshop, Mirage or equal, Quarziti 2.0, 12" x 12", River, MEQR04/1212
FT2	Porcelain Tile – Shower	Tilleshop, Mirage or equal, Quarziti 2.0, 12" x 12", Waterfall, MEQR03/1212 Apply clear non-slip coating to floor
FT3	Porcelain Tile – Restrooms & Lower Level Breakroom	Tilleshop, Floor Gres, Styletech Metal, 16" x 32", Metal 01, FGSM15/1632
FT4	Porcelain Tile – Breakroom 1 st Floor	Tilleshop, Koshi, 12" x 24", Tobacco, IAKITO/1224
MT	Marble Tile	Marble, Tennessee Dark Rose, 12" x 24"
ET	Exterior pavers	Concrete patio pavers, exposed aggregate, Size: 18" x 18" to 24" x 24" square, Depth: 1.75"
SAL	Salvaged Stone Flooring	Stone flooring salvaged from this project
CON1	New Concrete – Exterior	Concrete to match existing sidewalk pattern and finish
CON2	New Concrete – Interior	New concrete floor to match existing concrete floor
SDT	Static Dissipative Tile	Staticworx or equal, Ameriworx Rox ESD Vinyl Tiles, Black Rock Canyon
MAT	Recessed Floor Mat	Recessed LEED compliant walk-off floor mat
TZ	Epoxy Terrazzo tread and riser	Tectura Designs or equal, Precast Epoxy Terrazzo stair tread and riser, with landings E-16-718, stainless steel inserts at the top and bottom treads of each run, Mix: 80% clear glass, 20% mirror
RR	River Rocks	American Soil and Stone or equal, Style: Pebbles, Size: Large, Color: Salmon River
P	Paint for new striping on (E) floor	1 coat Devco or equal, Devfloor Colored Epoxy over 1 coat of waterborne epoxy primer, color to contrast with (E) flooring
EPXY	Colored Epoxy on concrete landings and floors	1 coat Devco or equal, Devfloor Colored Epoxy over 1 coat of waterborne epoxy primer, color to match [P13]
Base		
Cove	Coved	Cove [SL1]
VB	Vinyl Base – Metallic	Burke Flooring or equal, Mercer Vinyl-Type TV, Color: 117 Platinum Metallic
MTL1	Metal Coved Base	Schluter or equal DILEX-EHK in Stainless Steel, +/-3/4" tall
MTL2	Metal Facing – Bronze	4" Direct-applied Chemetal or equal metal facing, Finish: 924 Bronze Stainless Steel, Solid Metal .025" thick
MTL3	Metal Facing – Aluminum	6" Direct-applied Chemetal or equal metal facing, Finish: 902 Brushed Aluminum, Solid Metal .025" thick
WD	Stained Wood Base	1" x 4" Oak Base with tinted stain
MB	Salvaged Marble Base	6" Salvaged Marble Base
SB	Salvaged Stone Base	6" Salvaged Green Stone Base from Lower Level
Walls and Trim		
AW1	Acoustical Wall Treatment – Printed Fabric	Clipso Sound or equal, custom printed 495 D fabric over 2 layers of 3/8" LA 53 synthetic batting, digital images will be provided by the architect
AW1-1	Printed Fabric – 2' x 4'	Clipso Sound or equal, custom printed 495 D fabric over 2 layers of 3/8" LA 53 synthetic batting, with Profile P-CC-1P, 2' x 4'
AW1-2	Printed Fabric – 4' x 4'	Clipso Sound or equal, custom printed 495 D fabric over 2 layers of 3/8" LA 53 synthetic batting, with Profile P-CC-1P, 4' x 4'
AW1-3	Printed Fabric – 8' x 6'	Clipso Sound or equal, custom printed 495 D fabric over 2 layers of 3/8" LA 53 synthetic batting, with Profile P-CC-1P, 6' x 8'
AW1-4	Printed Fabric – 4' x length of wall	Clipso Sound or equal, custom printed 495 D fabric over 2 layers of 3/8" LA 53 synthetic batting, with Profile P-CC-1P, 4' x length of wall
AW1-5	Printed Fabric – 3' x length of wall	Clipso Sound or equal, custom printed 495 D fabric over 2 layers of 3/8" LA 53 synthetic batting, with Profile P-CC-1P, 3' x length of wall
AW1-6	Printed Fabric – Full Wall	Clipso Sound or equal, custom printed 495 D fabric over 2 layers of 3/8" LA 53 synthetic batting, with Profile P-CC, from the top of the wall base to the ceiling by entire length of wall
AW1-7	Printed Fabric – as indicated on elevation	Clipso Sound or equal, custom printed 495 D fabric over 2 layers of 3/8" LA 53 synthetic batting, with Profile P-CC-1P, as indicated on elevation
AW2	Acoustical Wall Treatment – Punched Gypsum Wall Board	Pyrok or equal, Vogl Acoustic Design Panels, Perforated gypsum board 8/18R with White Acoustical Fleece backing, on 7/8" hat channels at 13.125" O.C., 7/8" fiberglass panel behind, joints finished with VoglJoint, continuous perimeter aluminum trim [TR5], paint must be roller applied
AW3	Acoustical Wall Treatment – Punched Metal, White	Ceilings Plus or equal, Wallforms, Formed metal wall panel system with perforated panels and fiberglass backing behind Soundtex White acoustical liner and fiberglass batts, Finish: Blanco Mat
AW4	Acoustical Wall Treatment – Punched Metal, Wood	Ceilings Plus or equal, Wallforms, Formed metal wall panel system with perforated panels and fiberglass backing behind Soundtex Black acoustical liner and fiberglass batts, Finish: Sarante Golden Birch S-23N
AW5	Acoustical Wall Treatment – Punched Metal, Silver	Ceilings Plus or equal, Wallforms, Formed metal wall panel system with perforated panels and fiberglass backing behind Soundtex Grey acoustical liner and fiberglass batts, Finish: Kryolite
GB	Painted Gypsum Wall Board	All Gypsum Wall Board to have smooth finish and paint
P1	Paint	2 coats Benjamin Moore Regal paint, eggshell finish, over 1 coat primer.
P2	Paint – Metallic Silver accent walls and Headers	1 coat Scuffmaster Pre-mixed Water Base Metallic Coating, Solid Metal, with clear topcoat, over 1 coat primer
P3	Paint – Metallic Silver for exposed metal	1 coat Scuffmaster Pre-mixed Water Base Metallic Coating, EnviroMetal, with clear topcoat, over 1 coat primer
P4	Paint – High Contrast for Projection Wall	Goo Systems Global or equal, High Contrast Paint
P5	Paint – Semi-Gloss New restrooms and shower	2 coats Benjamin Moore Regal paint, Semi-Gloss finish, over 1 coat primer
P6	Paint – Semi-Gloss Existing restrooms	2 coats Benjamin Moore Regal paint, Semi-Gloss finish, over 1 coat primer
P7	Paint – Accent	2 coats Benjamin Moore Color Preview, Venezuelan Sea 2054-30, eggshell finish, over 1 coat primer
P8	Paint – Accent	2 coats Benjamin Moore Classic Colors, Beverly Hills 180, eggshell finish, over 1 coat primer
P9	Paint – Accent Concrete columns	2 coats Benjamin Moore Color Preview, Tea 2091-10, eggshell finish, over 1 coat primer
P10	Paint – Accent 1 st Floor	2 coats Benjamin Moore Regal paint, eggshell finish, over 1 coat primer
P11	Paint – Accent 1 st Floor below wood	2 coats Benjamin Moore Regal paint, eggshell finish, over 1 coat primer
P12	Paint – Stairwell walls	2 coats Benjamin Moore Color Preview, Chantilly Lace 2121-70, eggshell finish, over 1 coat primer
P13	Paint – Semi-Gloss Stairwell Metal	1 coat Tnemec or equal Series 1028 Enduratone, Premium Performance Acrylic, Semi-Gloss finish, over 1 coat primer
P14	Paint – Semi-Gloss Stairwell Metal - White	1 coat Tnemec or equal Series 1028 Enduratone, Premium Performance Acrylic, Semi-Gloss finish, over 1 coat primer
P15	Paint – Semi-Gloss Stairwell Metal Doors and Frames	2 coats Benjamin Moore Regal paint, Semi-Gloss finish, over 1 coat primer
P16	Paint – Semi-Gloss Stairwell Entrance Doors and Frames	2 coats Benjamin Moore Regal paint, Semi-Gloss finish, over 1 coat primer
P17	Paint – 2 nd Floor Accent Ceiling	2 coats Benjamin Moore Regal paint, flat finish, over 1 coat primer
P18	Paint – Metallic, Dark for signage	1 coat Scuffmaster Pre-mixed Water Base Metallic Coating, Solid Metal, EM11280R, with clear topcoat, over 1 coat primer
P19	Paint – Metallic, Custom Bronze color for rail support	1 coat Scuffmaster Pre-mixed Water Base Metallic Coating, Solid Metal, w/ clear topcoat, over 1 coat primer, custom color matched by manufacturer to a piece of (E) salvaged rail selected by architect
P20	Paint – Metallic, Dark for signage - exterior	2 coat Matthews Paint or equal, Proseco Series, with clearcoat, over 1 coat shop applied primer
P21	Paint – Ceilings	2 coats Benjamin Moore Regal paint, flat finish, over 1 coat primer
P22	Paint – Metallic Silver Doors and Frames	1 coat Scuffmaster Pre-mixed Water Base Metallic Coating, Solid Metal, with clear topcoat, over 1 coat primer, color to match [P2]
P23	Paint – Semi-Gloss Metal Doors and Frames	2 coats Benjamin Moore Regal paint to match adjacent wall color, Semi-Gloss finish, over 1 coat primer
P24	Paint – Semi-Gloss Metal Doors and Frames – Utility Rm.	2 coats Benjamin Moore Regal paint, Semi-Gloss finish, over 1 coat primer
P25	Paint – Semi-Gloss Exterior Metal Doors and Frames	1 coat Tnemec or equal Series 1028 Enduratone, Premium Performance Acrylic, Semi-Gloss finish, over 1 coat primer
P26	Paint – Semi-Gloss Exterior Metal Doors and Frames	1 coat Tnemec or equal Series 1028 Enduratone, Premium Performance Acrylic, Semi-Gloss finish, over 1 coat primer
PWD1	Powder coating – 1 st floor	Metallic powder coating (PPG, Envirocron 04, ultra-durable finish, color: Platinum Mica) 2
PWD2	Powder coating – 3 rd floor	Match (E) dark bronze color of adjacent aluminum storefront
VWC3	1 st & 2 nd Floor Vinyl Wall Covering	Knoll Textiles, Landscape, Style Number: WC1653/7, Color: Misty, install with horizontal grain
VWC4	1 st Floor Vinyl Wall Covering	Knoll Textiles, Landscape, Style Number: WC1653/4, Color: Sand, install with vertical grain
FRP	Fiber-Reinforced Plastic Wall Panels	Marlite or equal 4' high wainscot (P100 White, Class A) 2
MP2	Metal Panel - woven	The Finish Line, Omega 216, architectural woven metal mesh
MP3	Metal Facing - Aluminum	Direct-applied Chemetal or equal metal facing, Finish: 902 Brushed Aluminum, Solid Metal .025" thick
MP4	Metal Facing - Bronze	Direct-applied Chemetal or equal metal facing, Finish: 924 Bronze Stainless Steel, Solid Metal .025" thick
TR1	Trim 6"	6" x 3/4" Trim, Smooth finish, painted [P3]
TR2	Metal Trim 4"	4" x 1" Aluminum Trim powder coated to match demountable wall system, provided by demountable wall system manufacture, installed by contractor
TR3	Edge Trim – Tile	Schluter Systems or equal – Jolly, Anodized Aluminum, Finish: Polished Chrome A100ACG
TR4	Corner Trim – Tile	Schluter Systems or equal – Quadec, Anodized Aluminum, Finish: Nickel Q100AT
TR5	Corner Trim – Punched Gyp. Bd.	Fry Reglet or equal, Aluminum "L" trim molding, DRML-1250, Finish: clear anodized
TR6	Corner Trim – Gyp. Bd.	Fry Reglet or equal, Aluminum "J" molding, JDM-625, Finish: clear anodized
TR7	Corner Trim – Gyp. Bd.	Fry Reglet or equal, Aluminum "J" molding, JPM-75-300, Finish: clear anodized
TR8	Corner Trim – Gyp. Bd. above demountable wall	Fry Reglet or equal, Aluminum "L" trim molding, DRML-100, Finish: clear anodized
TR9	Edge Trim – Printed Fabric Acoustical Wall Treatment	Fry Reglet or equal, Aluminum "J" molding, JPM-100, Finish: clear anodized
TR10	Trim on ceiling under Stair 4 top landing	4" x 0.28" Trim (height and width to match flange of adjacent W6x12), Smooth finish, painted [P3]

Code	Description	Product
Walls and Trim		
VF	Vinyl Film	Custom Patterned Vinyl Film applied to glazed doors and demountable wall system, pattern to be provided by architect See detail 8/A8.9 2
WT1	Wall Tile – Restrooms	Tilleshop, Epoc or equal a, Design Positive, 8" x 20", Bianco Brillante (EADPBB)
WT2	Accent Tile	Tilleshop, Vetrissimo, Metallic Glass Sticks, Blend 2 (Cool Pweter) VOMGB2/SS, 0.94 SF sheet of tiles cut into strips of 6 tiles
WT3	Wall Tile – Backsplash	Tilleshop, Lanka or equal, Bloc, 4" x 16", Glossy White, LABC101G/416
WT4	Wall Tile – Travertine Look	Tilleshop, Floor Gres or equal, Geotech, 12" x 24", Geo White, FGGHWEN/1224
WD1	Existing wood paneling	Existing wood paneling to remain, patch as required or replace with salvaged wood from the same floor
WD2	Salvaged wood paneling	Salvaged wood panels in Monarch Easy Wall Panel System with aluminum Narrow Reveals: EPS-H075-N and EPS-V075-N, Finish: Clear
Wall Mounted Boards		
M1	4' x 8' Marker Board	Clarus or equal Glassboards, Depth w/ 3" Standoff, provide backing as required by manufacturer
M2	4' x 6' Marker Board	Clarus or equal Glassboards, Depth w/ 3" Standoff, provide backing as required by manufacturer
M3	4' x 4' Marker Board	Clarus or equal Glassboards, Depth w/ 3" Standoff, provide backing as required by manufacturer
M4	3' x 3' Marker Board	Clarus or equal Glassboards, Depth w/ 3" Standoff, provide backing as required by manufacturer
BB	Bulletin Board	Umbra or equal Large Bulletin Board – Nickel perforated metal. Combine 4 – 15"x21" bulletin boards (\$40 ea.), 2 locations for a total of 8
Window Coverings		
S1	Window Shade	Motorized control MechoSystem or equal shade, 5% open, EuroVeil Basket Weave, Sand 5304, with fascia end caps and roll fascia
S2	Window Shade – Large Conference Room	Motorized control MechoSystem or equal shade, 5% open, EuroVeil Basket Weave, Sand 5304, mounted inside Large Conference Room 228 to underside of new Loft Structure, mount to beams as noted on plan. Mecho shade to be centered on window opening and shall be 6" wider than the opening.
Ceiling		
GB	Painted Gypsum Wall Board	All GWB to have smooth finish and paint
AC1	Acoustical Tile in Existing Grid	Armstrong or equal Calla smooth texture, 2'x2' or 2'x4' Tegular Tiles in existing grid
AC2	Acoustical Tile in New Grid	Armstrong or equal Calla smooth texture, 2'x2' Tegular Tiles in Armstrong Suprafine XL 7501 Series
AC3	Acoustical ceiling tiles in Hanging Cloud Kit	Armstrong or equal Optima Vector Fine Texture Panel
		Armstrong or equal Formations Acoustical Cloud Kits with 4" Axiom for Formations Vector Trim, Color: White (WH), standard kit sizes are used U.N.O.
AC4	Metal Acoustical ceiling tiles in Hanging Cloud Kit	Armstrong or equal Metalworks Vector smooth finish, Microperforated – M2, Silver Grey Finish, with fiberglass infill panel
		Armstrong or equal Formations Acoustical Cloud Kits with 4" Axiom for Formations Vector Trim, Color: Silver Grey (SG), standard kit sizes are used U.N.O. Armstrong to fabricate custom kit sizes.
AC5	Acoustical Ceiling Treatment – Punched Gypsum Wall Board	Pyrok or equal, Vogl Acoustic Design Panels, Perforated gypsum board 8/18R with White Acoustical Fleece backing, on 7/8" hat channels at 13.125" O.C., 7/8" fiberglass panel behind, joints finished with VoglJoint, continuous perimeter aluminum trim [TR5], paint must be roller applied
AC6	Reflective Hanging Cloud	Armstrong Capz or equal, MetalWorks, Unperforated, size 48" x 96" x 9/16" (Item number 64940M10WH)
AC7	Acoustical Ceiling Treatment – White Fabric	Clipso or equal Acoustic Color: 0004 Translucent White, fabric over 2 layers of 3/8" LA 53 synthetic batting, Profile P-CC at perimeter and seams
AC8	Metal Acoustical Ceiling	Armstrong or equal Metalworks Clip-on smooth texture, Perforation – M15, Brushalume (BAA), Butt Joint 7110, with fiberglass infill panel and grey felt acoustical liner
EXP. ST	Exposed Structure	Exposed Structure, painted as indicated on RCP's
GLAZ	Textured Resin Panels	Clear resin panels with surface texture on both sides, 4' x 10' x 1/4" panel factory cut to fit into existing bronze grid, 3form, Varia Ecoresin panel, Style: Clear, Finish: Sandstone, Gauge: 1/4"
SM	Painted sheet metal	14 gauge sheet metal, painted with metallic paint [P3]
Casework		
SSC1	Solid Surface Countertops	Alkemi, Recycled Surfacing material, polyester color – natural 10, finish: classic ¾", square edge with backsplash at perimeter
SSC2	Terrazzo counter top, 1 st floor restrooms	Tectura Designs or equal, Traditional Series Slabs, 1.25" thick, Color:TZ23 Flax, Finish: 1200 Polish
CAB	Bamboo finished on cabinets	Inner Most or equal, St. Lucia Flush Front, Bamboo Natural with finished sides, where exposed and White Melanine interiors
		Flush doors on all upper and base cabinets, U.N.O.
Pulls	Stainless Steel Pulls	Liberty or equal, 8 – 13/16" Steel Bar Pull, P01015-SS-C, at all doors and drawers, SS finish
Hardware	Hinges etc.	By Manufacturer
Plam	Plastic Laminate Countertop	Wilsonart or equal, Plastic Laminate, square edge, no backsplash Pattern: Carbon EV, Matte Finish, 4802-60 1
Bamboo	Stadium Seating Finish	¾" bamboo on all exposed sides of the stadium seating
Partitions		
Toilet	HPDE	Yemm & Hart or equal, Origins, Polyethylene toilet partitions, Color:128 Caviar
ER1	Resin panels in cable Partition – Paper Lane	4' x 8' panels, 3form, Varia Ecoresin panel, Style: Paper Lane, Finish: Sandstone, Gauge: 3/8" suspended from ceiling and anchored to the floor via cables using 3form 200.08 Partition system
ER2	Resin panels in cable Partition – Web Color	4' x 8' panels, 3form, Varia Ecoresin panel, Style: Web Color, Scale C, Paprika O22, Finish: Sandstone, Gauge: 3/8" suspended from ceiling and anchored to the floor via cables using 3form 200.08 Partition system
ER3	Resin panels in cable Partition – Evo White	4' x 8' panels, 3form, Varia Ecoresin panel, Style: Evo White, Finish: Sandstone, Gauge: 3/8" suspended from ceiling and anchored to the floor via cables using 3form 200.08 Partition system
ER4	Resin panels in cable Partition – Glint Silver	4' x 8' panels, 3form, Varia Ecoresin panel, Style: Glint Silver, Finish: Sandstone, Gauge: 3/8" suspended from ceiling and anchored to the floor via cables using 3form 200.08 Partition system
ER5	Resin panels in cable Partition – Multiple Styles	4' x 8' panels, 3form, Varia Ecoresin panel, Style: Lunar, Glint Silver, Wisp Silver, Pure Silver, Sequence + Highres Cherry, Finish: Sandstone, Gauge: 3/8" suspended from ceiling and anchored to the floor via cables using 3form 200.08 Partition system, see elevation
ER6	Resin panel – Crossed Color	4' x 8' panels, factory cut to fit between power poles, 3form, Varia Ecoresin panel, Style: Crossed Color, Scale B, Cruise B21, Finish: Sandstone, Gauge: 3/8" installed between power poles
ER7	Resin panel wall cladding – Sequence + Highres Cherry + Reflect E01	4' x 8' panels, 3form, Varia Ecoresin panel, Style Sequence + Highres Cherry + Reflect E01, Finish: Sandstone, Gauge: 1/8" wall cladding using 3form 300.41 Wall Feature system, see elevation
ER8	Resin panel – Paper Lane	4' x 8' panels, factory cut to fit between power poles, 3form, Varia Ecoresin panel, Style: Paper Lane, Finish: Sandstone, Gauge: 3/8" installed between power poles
LMTL	Low Metal Partition at Entry	3'-6" high welded metal frames made of 1-1/2" steel angles with bar stops, painted metallic silver [P3], Infill panel of architectural woven metal mesh [MP2]
Miscellaneous		
Bike Rack	Floor mounted metal bike rack	Dero Ultra Space Saver bike racks per County standard for assemblies of 8 and 5 bikes with a floor mount installation and optional tire stop, powder coated finish, standard color to be selected by architect
Seismic Seal	Seismic Seal	Willseal or equal, 600S, ½" wide by 2" deep, Color: Grey
Appliances	Refrigerator – Full Sized	GE or equal, French-door refrigerator with bottom freezer, Stainless Steel finish, Energy Star Certified, GNE29GSKSS
	Refrigerator – Undercounter	Summit Appliance or equal, Compact Refrigerator, ADA compliant with Stainless Steel finish, Energy Star Certified, 32.25" H x 23.63" W x 23.5" D, FF6B75SHVADA
	Dishwasher	Bosch, 24" Bar Handle Special Application 800 Series Dishwasher, ADA compliant with Stainless Steel finish and concealed controls, Energy Star certified, SGX68U5SUC

COVER PLATES AND RECEPTACLE COLORS

COVER PL/RECEPTACLE COLOR	WALL FINISH COLOR
GRAY	METAL, METALLIC GRAY OR PRINTED FABRIC METAL, METALLIC OR GRAY WALL FINISH AS WELL AS PRINTED FABRIC ACOUSTICAL WALL TREATMENT
BROWN	WOOD ALL (N) AND (E) WOOD PANELING MADE OF SOLID WOOD OR WOOD VENEER AS WELL AS ALL OTHER MATERIALS PRINTED OR PAINTED WITH A WOOD PATTERN
WHITE	ALL OTHER COLORS/FINISHES NOT MENTIONED ABOVE
NOTES: 1. THE COLOR REQUIREMENTS LISTED IN THIS TABLE APPLY TO COVER PLATES FOR ALL JUNCTION BOXES INCLUDING BUT NOT LIMITED TO RECEPTABLES, SWITCHES AND TELE/DATA PORTS 2. WHERE EXISTING ELECTRICAL OUTLETS ARE TO REMAIN IN THE SAME LOCATION, THE COVER PLATE AND RECEPTACLE MAY REMAIN IF THEY COMPLY WITH THESE COLOR REQUIREMENTS	

BID SET

REVISIONS

1	ADDENDUM 1 04/28/2017
2	ADDENDUM 2 05/09/2017

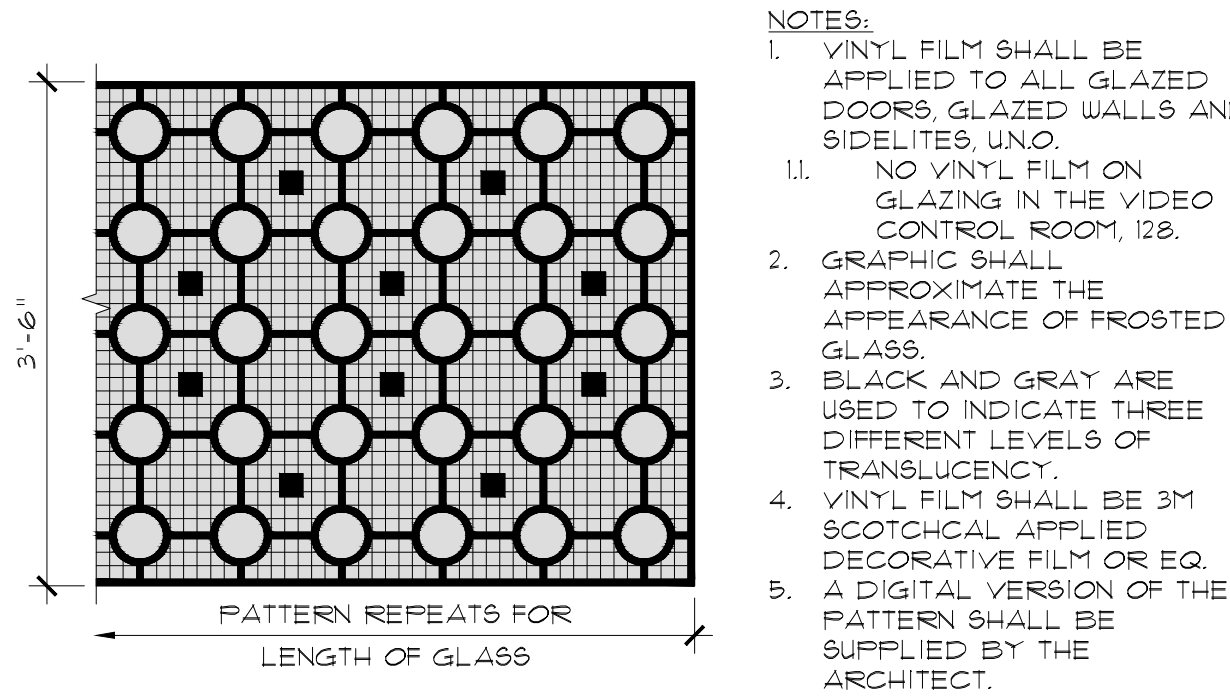
© COPYRIGHT 2017

DATE: 03/31/2017

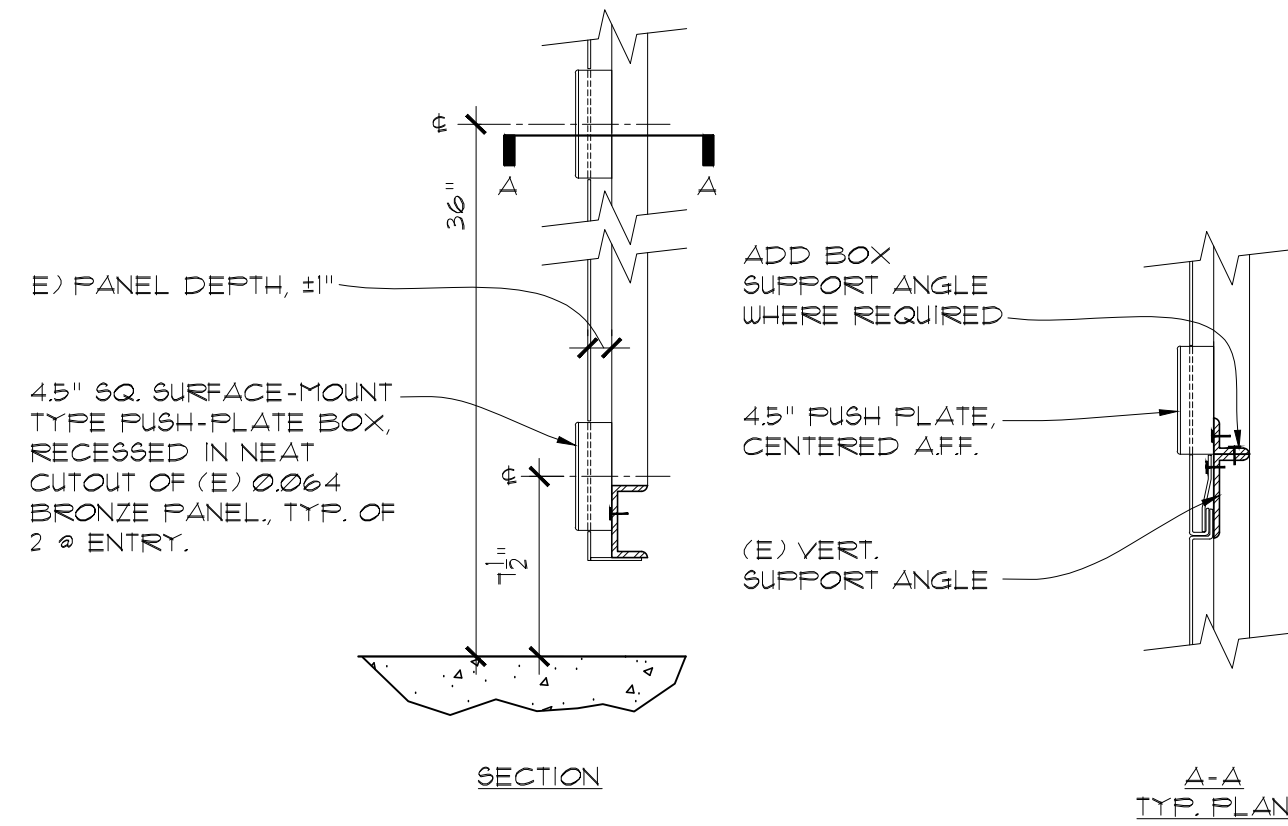
DRAWN BY: WY

PROJECT NO.: 1203.22

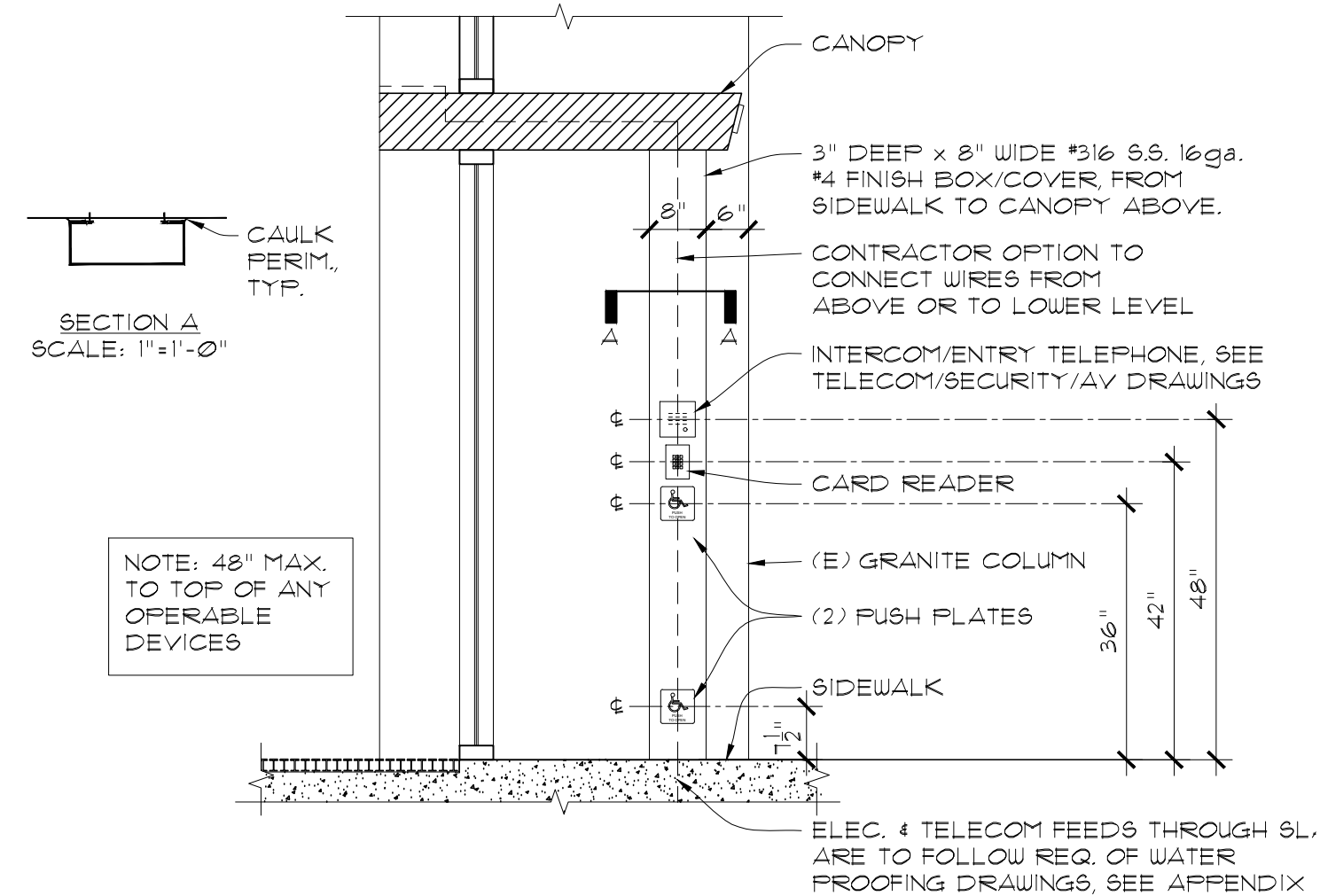
8 VINYL FILM CUSTOM GRAPHIC
A8.9 SCALE: 3/4" = 1'-0"



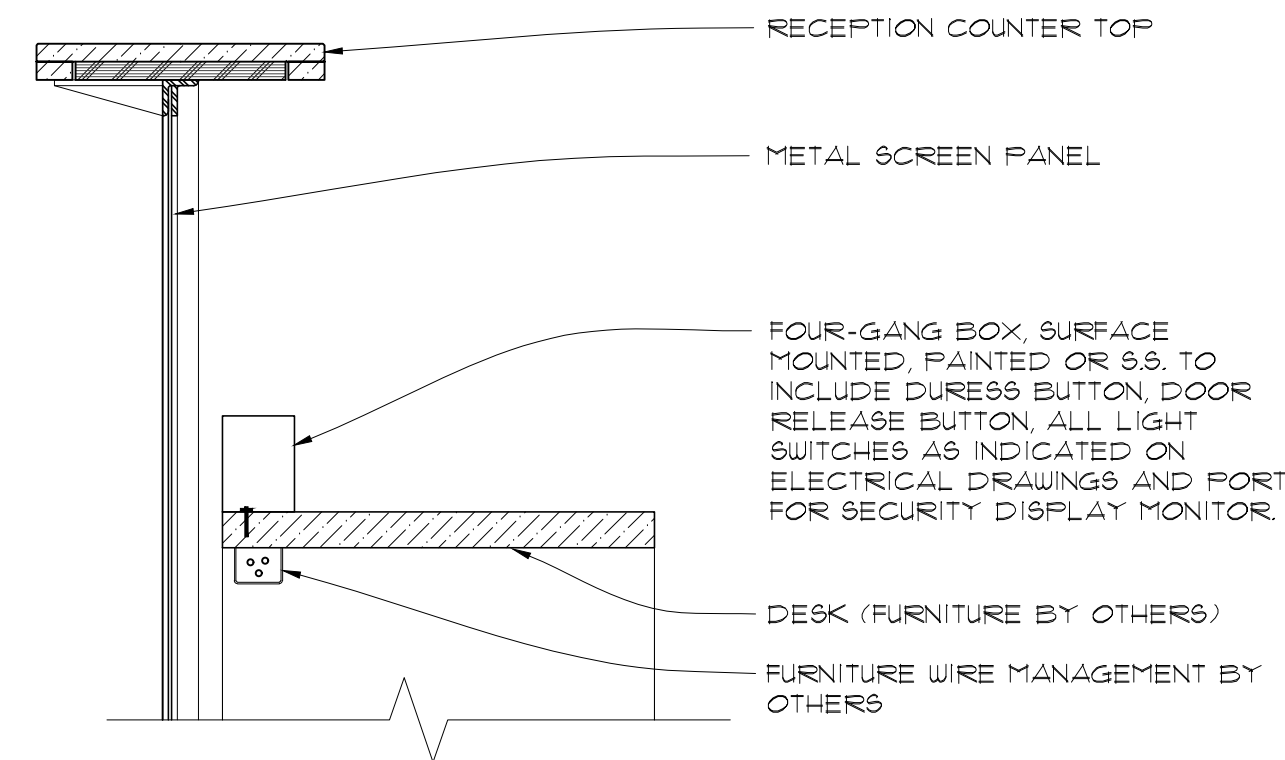
4 PUSH-PLATES
A8.9 SCALE: 1 1/2" = 1'-0" @ ENTRANCE



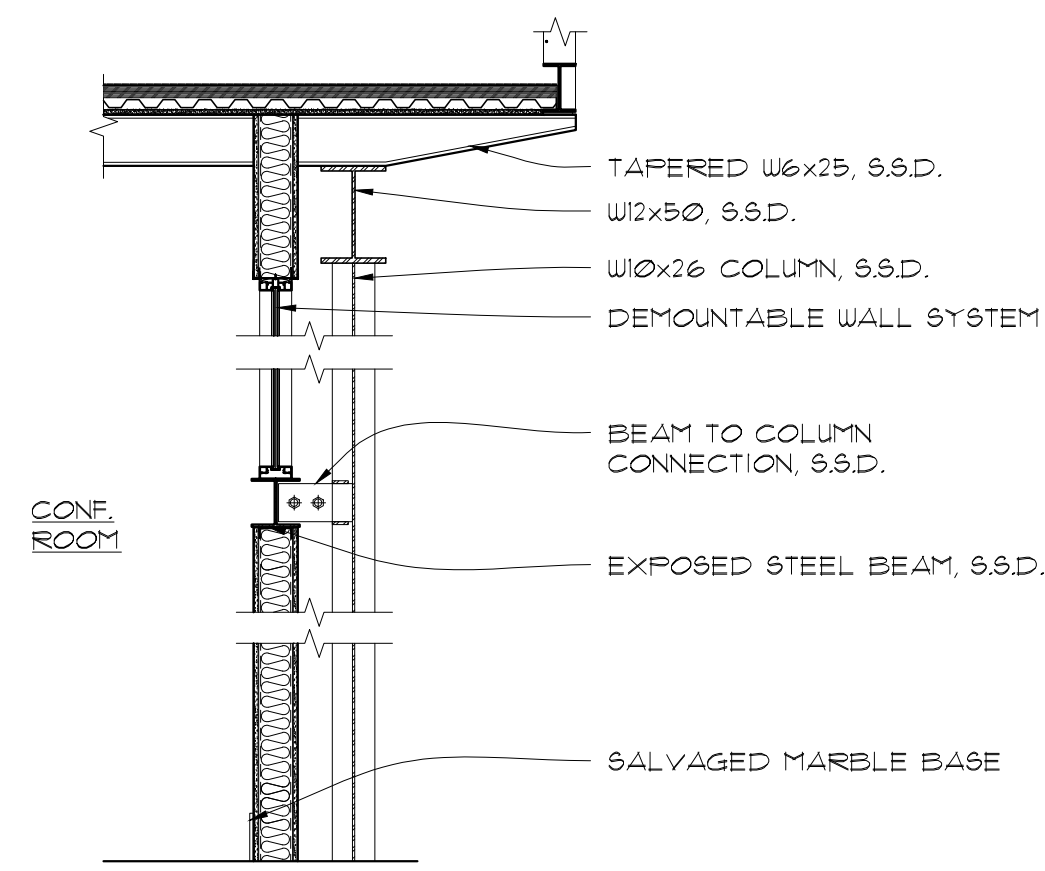
3 CUSTOM BOX/COVER
A8.9 SCALE: 1/2" = 1'-0" @ MAIN ENTRY



2 FOUR-GANG BOX
A8.9 SCALE: 1 1/2" = 1'-0" @ RECEPTION



1 WALL @ LARGE CONF. ROOM
A8.9 SCALE: 1/2" = 1'-0"



5 SALVAGED RAIL
A8.9 SCALE: 3/4" = 1'-0"

