

SCOPE OF WORK - DEMO

- RECONFIGURE EXISTING COPY ROOM TO BREAK ROOM
- AND-
- RECONFIGURE EXISTING BREAK ROOM TO COPY ROOM
- D131 - EXISTING COPY ROOM
- D128 - EXISTING BREAK ROOM

- 1 REMOVE AND SAVE EXISTING CABINETRY, SINK & FAUCET
- 2 REMOVE AND SAVE EXISTING SOAP DISPENSER
- 3 REMOVE AND SAVE EXISTING TACK BOARD
- 4 DISCONNECT AND CAP (IN WALL) HOT & COLD SUPPLY LINES
- 5 DISCONNECT AND CAP (IN WALL) WASTE LINE
- 6 REMOVE AND SAVE 6" HVAC DUCT (6X6 DIFFUSER) AND CEILING TILE
- 7 ELECTRICAL RECEPTACLE LOCATION REVISIONS PER 'NEW FLOOR PLAN'
- 8 DATA DEVICE LOCATION REVISIONS PER 'NEW FLOOR PLAN'
- 9 FURNITURE RELOCATION PER 'NEW FLOOR PLAN'
- 10 REMOVE AND SAVE CARPET TILES AT AREA OF WORK (DRAIN) AS NEEDED
- 11 REMOVE AND DISPOSE OF ROOM SIGNAGE

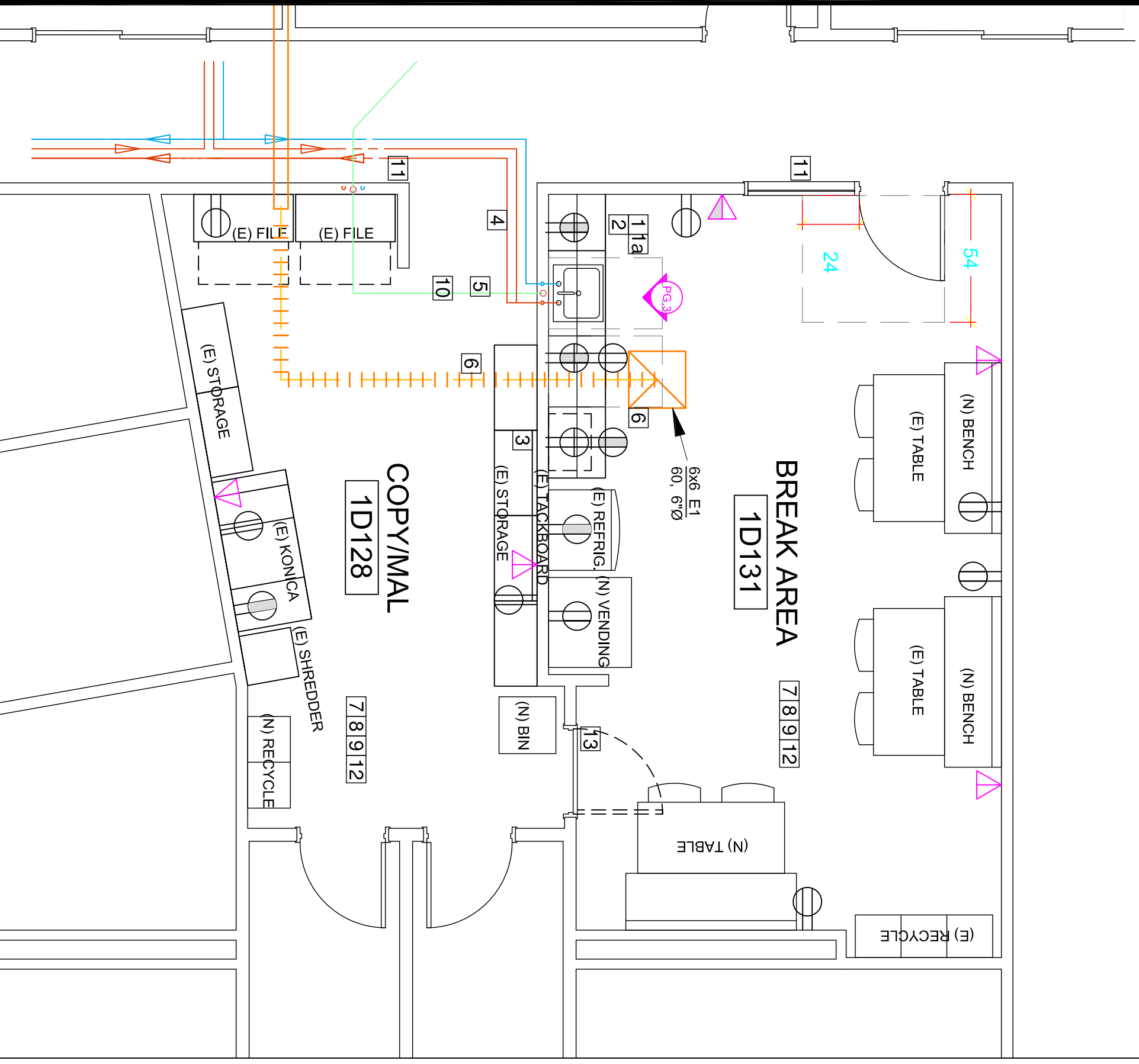
NO CHANGES TO LIGHTING REQUIRED
NO CHANGES TO FIRE ALARM / SPRINKLER SYSTEM

- DUPLEX RECEPTACLE, 18" AFF, X = CIRCUIT #
- DUPLEX RECEPTACLE, 42" AFF, X = CIRCUIT #
- DUPLEX RECEPTACLE, DEDICATED, X = CIRCUIT #
- TELECOMMUNICATION DEVICE, 18" AFF
- TELECOMMUNICATION DEVICE, 42" AFF
- # OF DIFFUSERS AND NECK SIZE \rightarrow 6X6 E1 \leftarrow TYPE OF DIFFUSER
CFM PER DIFFUSER \rightarrow 60, 6"Ø \leftarrow BRANCH DUST SIZE

EXISTING FLOOR PLAN | DEMO PLAN

SCALE: 1/4" = 1' - 0"

FIELD VERIFY ALL DIMENSIONS



SCOPE OF WORK - CONSTRUCTION

RECONFIGURE EXISTING COPY ROOM TO BREAK ROOM
-AND-
RECONFIGURE EXISTING BREAK ROOM TO COPY ROOM

D131 - NEW BREAK ROOM
D128 - NEW COPY ROOM

- 1 REINSTALL CABINETRY, SINK & FAUCET
- 1a ADD UPPER CABINET (24" OVER CNTR) AND EXTEND BASE CABINET +/-2'
- 2 REINSTALL SOAP DISPENSER
- 3 REINSTALL TACK BOARD
- 4 RE-ROUTE (OVERHEAD) HOT & COLD SUPPLY LINES TO NEW SINK LOCATION
- 5 RE-ROUTE DRAIN LINE TO NEW SINK LOCATION (TRENCHING REQUIRED)
- 6 RE-ROUTE 6" HVAC DUCT (6X6 DIFFUSER) TO LOCATION OVER NEW SINK
- 7 ELECTRICAL RECEPTACLE LOCATION REVISIONS AS NOTED ON PLAN
- 8 DATA DEVICE LOCATION REVISIONS AS NOTED ON PLAN
- 9 NEW FURNITURE LOCATIONS AS NOTED ON PLAN
- 10 REPLACE CARPET TILES AS NEEDED
- 11 NEW ROOM SIGNAGE: D128 COPY/MAL & D131 BREAK AREA (MATCH EXISTING SIZE AND STYLE)
- 12 PATCH/REPAIR ALL WALL, FLOORS, CEILING AS NEEDED
- 13 RETROFIT DOOR WITH BLANK HANDLE

NO CHANGES TO LIGHTING REQUIRED
NO CHANGES TO FIRE ALARM OR SPRINKLER SYSTEM

FINISHES

- * PAINT - MATCH EXISTING
- ** FLOORING - MATCH EXISTING
- *** BASE - MATCH EXISTING

- DUPLEX RECEPTACLE, 18" AFF, X = CIRCUIT #
- DUPLEX RECEPTACLE, 42" AFF, X = CIRCUIT #
- DUPLEX RECEPTACLE, DEDICATED, X = CIRCUIT #
- TELECOMMUNICATION DEVICE, 18" AFF
- TELECOMMUNICATION DEVICE, 42" AFF
- # OF DIFFUSERS AND NECK SIZE
CFM PER DIFFUSER 6X6 E1 TYPE OF DIFFUSER
60, 6" BRANCH DUST SIZE

NEW FLOOR PLAN | ELEC./MECH./PLUMB.

SCALE: 1/4" = 1' - 0"

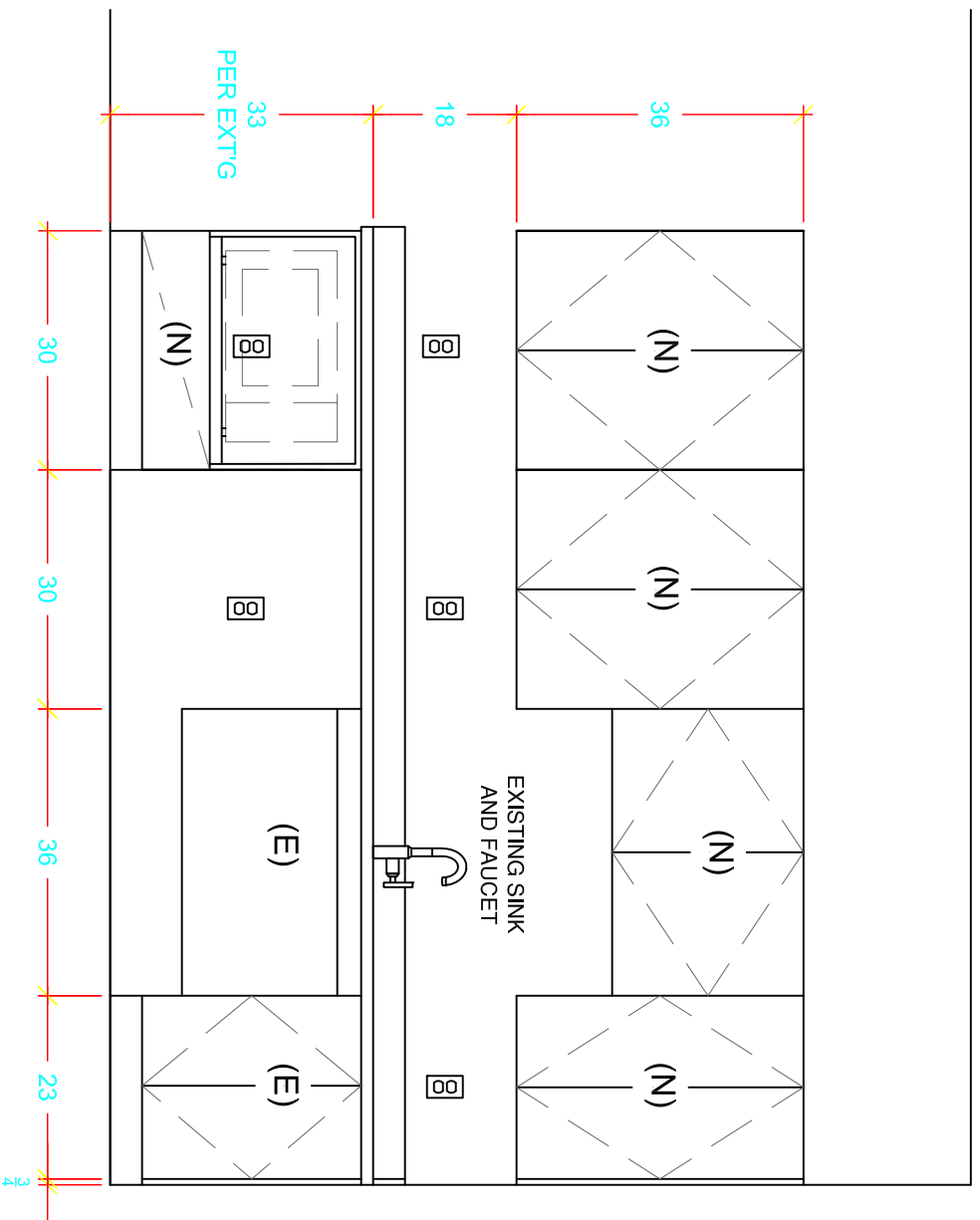
FIELD VERIFY ALL DIMENSIONS

BUILDING MAINTENANCE DEPT.
2045 FAIRMONT DRIVE
SAN LEANDRO, CA 94578
TEL: 510.667.3048
FAX: 510.667.3050



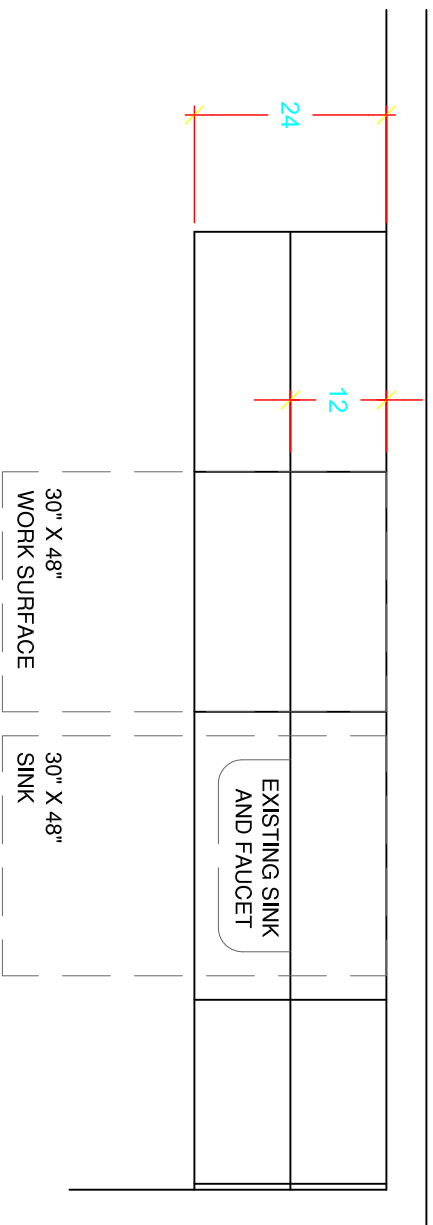
EAST COUNTY HALL OF JUSTICE
5149 GLEASON DRIVE
DUBLIN, CA 94568

DRAWN BY	mb
CHECKED	mb
DATE	6/27/16
SCALE	AS NOTED
JOB #	TBD
SHEET	2



ELEVATION @ KITCHENETTE

SCALE $\frac{1}{2}$ " = 1' - 0"



FLOOR PLAN @ KITCHENETTE

SCALE $\frac{1}{2}$ " = 1' - 0"

NEW CABINETRY AND COUNTERTOP PER
EXISTING FINISHES AND DETAILS
SHOP DRAWING SUBMITTAL REQUIRED

FURNITURE AND EQUIPMENT

COPY/MAIL

- (E) COPIER - KONICA (1) 64"W x 32"D x 46"H
- (E) SHREDDER - SWINGLINE (1) 21"W x 22"D x 32"H
- (E) POSTAGE MACHINE (1) 14"W x 28"W x 12"H
- (E) STORAGE CABINETS (3) 36"W x 18"D x 41"H
- (E) FILE CABINETS (3) 36"W x 18"D x 29"H
- (E) STORAGE CABINET (1) 36"W x 18"D x 65"H
- (E) FILE CABINETS (2) 42"W x 20"D x 38"H
- (N) LOCKABLE BIN (1) T.B.D.
- (N) RECYCLE (2) T.B.D.

BREAK ROOM

- (N) CABINET - SINK/BASE (1) 114"W x 24"D x 36"H
- (N) CABINET - UPPER (1) 114"W x 12"D x 36"H
- (N) VENDING MACHINE (1) 38"W x 35"D x 72"H
- (N) BENCH SEATING (3) 72"W x 24"D x 31"H
- (N) TABLE (1) 30"W x 60"L x 30"H
- (E) TABLES (& CHAIRS) (2) 30"W x 60"L x 30"H
- (E) REFRIGERATOR (1) 30"W x 30"D x 66"H
- (E) MICROWAVE (1) 24"W x 18"D x 14"H
- (E) RECYCLE (1) 58"W x 19"D x 36"H

EAST COUNTY HALL OF JUSTICE
5149 GLEASON DRIVE
DUBLIN, CA 94568



BUILDING MAINTENANCE DEPT.
2045 FAIRMONT DRIVE
SAN LEANDRO, CA 94578
TEL: 510.667.3048
FAX: 510.667.3050

DRAWN BY	mb
CHECKED	mb
DATE	6/27/16
SCALE	AS NOTED
JOB #	TBD
SHEET	3