



Networking/Bidders Conference Environmental Justice Element RFP RFP No. EJ2021

COUNTY OF ALAMEDA, PLANNING DEPARTMENT
MAY 18 & MAY 20, 2021

1

Agenda

1. Introductions
2. Background
3. Project Overview
4. RFP
5. Additional Information
6. Questions

2

Introductions

- The County team:
 - CDA – Planning Department, Policy Team
 - PHD – Health Equity, Policy & Planning
- Participants in this conference:
 - Name, Organization, Contact Info, Area(s) of Expertise

3

Background: Networking/Bidders Conferences

- Provide an opportunity for Small Local Emerging Businesses (SLEBs) and large firms to network and develop subcontracting relationships in order to participate in the contract(s) that may result from this RFP
- Provide an opportunity for Bidders to ask specific questions about the project and request RFP clarification
- Provide the County with an opportunity to receive feedback regarding the project and RFP

4

Background: Networking/Bidders Conferences

- Potential Bidders are strongly encouraged to attend Networking/Bidders Conference(s) in order to facilitate potential subcontracting relationships
- Vendors who attend a Networking/Bidder's Conference will be added to the Vendor Bid List
- The list will be circulated on May 26

5

Background: Q&A

- Questions are to be submitted by e-mail by 5:00 p.m. on May 21, 2021 to sophie.mcguinness@acgov.org
- Written questions submitted by the deadline will be addressed in an RFP Question and Answer (Q&A) following the Networking/Bidders conferences
- Should there be a need to amend or revise the RFP, an addendum will be issued

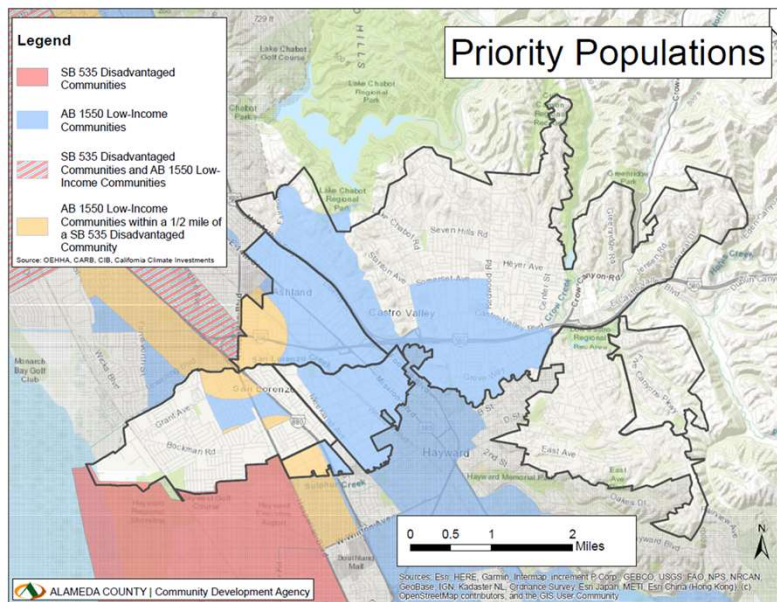
6

Background: SB 1000 Requirements

(Government Code Section 65302(h))

- Requires cities and counties that have disadvantaged communities to incorporate environmental justice (EJ) policies into their general plans, either in a separate EJ element or by integrating related goals, policies, and objectives throughout the other elements.
- Update must happen “upon the adoption or next revision of two or more elements concurrently on or after January 1, 2018.”

7



8

Background: Required topics

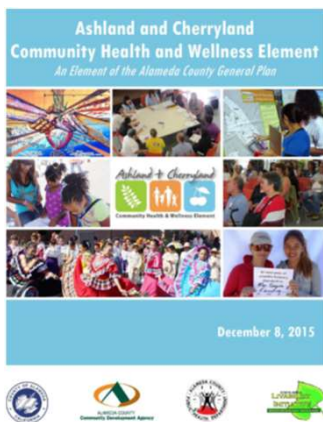
EJ Element must identify policies & objectives that will:

- Reduce pollution exposure and improve air quality
- Promote equitable access to public facilities
- Promote equitable food access
- Promote equitable access to safe and sanitary homes
- Promote equitable access to physical activity
- Promote civic engagement in the public decision-making process
- Prioritize improvements and programs that address the needs of disadvantaged communities

County can also include topics not on required list, such as reducing impacts of climate change, based on community input.

9

Background: Community Health & Wellness Element (CHWE)




- Adopted by Board of Supervisors in December 2015
- Result of partnership between CDA and PHD
- Substantial community outreach and engagement
- Based on the principles of equity, accountability, collaboration, diverse resident participation, and the development of local assets and resources that support the community's vision of health and wellness

10

SB1000 EJ Element Requirements vs CHWE	
SB 1000 Environmental Justice Element Requirements (Chapter 4, OPR's General Plan Guidelines, June 2020)	Ashland/Cherryland Community Health and Wellness Element (CHWE)
Reduce pollution exposure, including improving air quality	Sustainability and Environmental Health
Promote public facilities (public improvements, public services, and community amenities)	Parks and Community Facilities
Promote food access	Agriculture and Healthy Food Access
Promote safe and sanitary homes	Land Use and Housing
Promote physical activity	Active and Safe Transportation
Unique or compounded health risks	Health and Social Services
Promote civic engagement in the public decision-making process	Public Safety and Social And throughout plan. Example: Policy B.13 Enhance local self-governance by increasing resident involvement in neighborhood improvement efforts, including issues concerning safety, neighborhood character, planning, and revitalization.
Prioritize improvements and programs that address the needs of disadvantaged communities	Throughout plan. Example: Policy J.6. Increase investment in tree planting, incentives for green buildings and cool paving, and actively pursue the creation of new green spaces in areas with the highest heat-related vulnerability and/or highest ambient temperatures.

11

Project Overview



- CHWE: Adopted as an “optional element” of the General Plan in 2015
- County proposes to update CHWE to become an SB1000 compliant EJ Element

12

Project Overview: CHWE to EJ Element

- Continue CDA/PHD partnership
- Expand geographic area to include additional low-income census tracts
- Build on existing CHWE goals, policies, and actions
- Fill gaps to ensure all EJ Element requirements are addressed
- Identify additional topics based on community input
- Expand on previous robust community engagement process

13

RFP

- Demonstrated expertise in land use planning and stakeholder engagement and community outreach, especially among low-income and underserved communities
- Expected to become familiar with the unincorporated communities, the County's General Plan, related policies and plans and zoning ordinance
- Work closely in collaboration with staff from DPH and CDA comprising the County Staff Project Team

14

RFP: Collaboration

- County encourages collaboration between nonprofit and for-profit entities to create and/or to strengthen linkages that maximize the cost-effectiveness and quality of project delivery
- A “collaborative” consists of two or more organizations, each contributing substantial participation to the project, and at least one of which is proposed to receive County funds
- The “lead agency” or “lead organization” of a collaborative will be the organization that contracts with the County
- 10 points available in the Selection Criteria for collaboration

15

RFP: Tasks

1. Project Management, Meetings & Coordination
2. Project Initiation
3. Internal County Stakeholder Engagement
4. Community Engagement Planning
5. Community Engagement
6. Prepare EJ Element & Implementation Plan
7. Public Hearings & Board Adoption of EJ Element
8. Project Engagement Reporting

16

RFP: Budget and Timeline

- **Project Budget - \$100,000**

Consideration will be given to the proposal that outlines the most efficient and cost-effective way to perform the work and provide the services described in this RFP

- **One-year Contract** (with option to extend)

The work is expected to begin in September 2021 and conclude by September 2022

17

RFP: Selection Process

1. Short-list after review of bids based on evaluation criteria
2. Interview of short list bidders by County staff
3. Contract approval by Board of Supervisors

18

EVENT	DATE/LOCATION
Request Issued	April 20, 2021
Networking Conference #1	May 18, 2021 at 1:00 p.m.
Networking Conference #2	May 20, 2021 at 4:00 p.m.
Written Questions Due via Email: sophie.mcguinness@acgov.org	May 21, 2021 by 5:00 p.m.
List of Attendees	May 24, 2021
Q&A Issued	May 26, 2021
Addendum Issued (only if necessary, to amend RFP)	May 26, 2021
Response Due	June 9, 2021 by 2:00 p.m.
Evaluation Period	June 10 – June 16, 2021
Vendor Interviews	June 21 – June 23, 2021
Notice of Intent to Award Issued	TBD
Board Consideration Award Date	TBD
Contract Start Date	TBD

19

Additional Information

To view the RFP, visit:

<https://gsa.acgov.org/do-business-with-us/contracting-opportunities/current-bid/?bidid=2363>

To view the Ashland Cherryland Health and Wellness Element (CHWE), visit:

<https://www.acgov.org/cda/planning/generalplans/documents/CHWE12-8-15.pdf>

To view the Eden Area Plan and the Ashland Cherryland Business District specific plan, visit:

<https://www.acgov.org/cda/planning/generalplans/index.htm>

To view OPR's Environmental Justice Element General Plan Guidelines, visit:

https://opr.ca.gov/docs/20200706-GPG_Chapter_4_EJ.pdf

20

