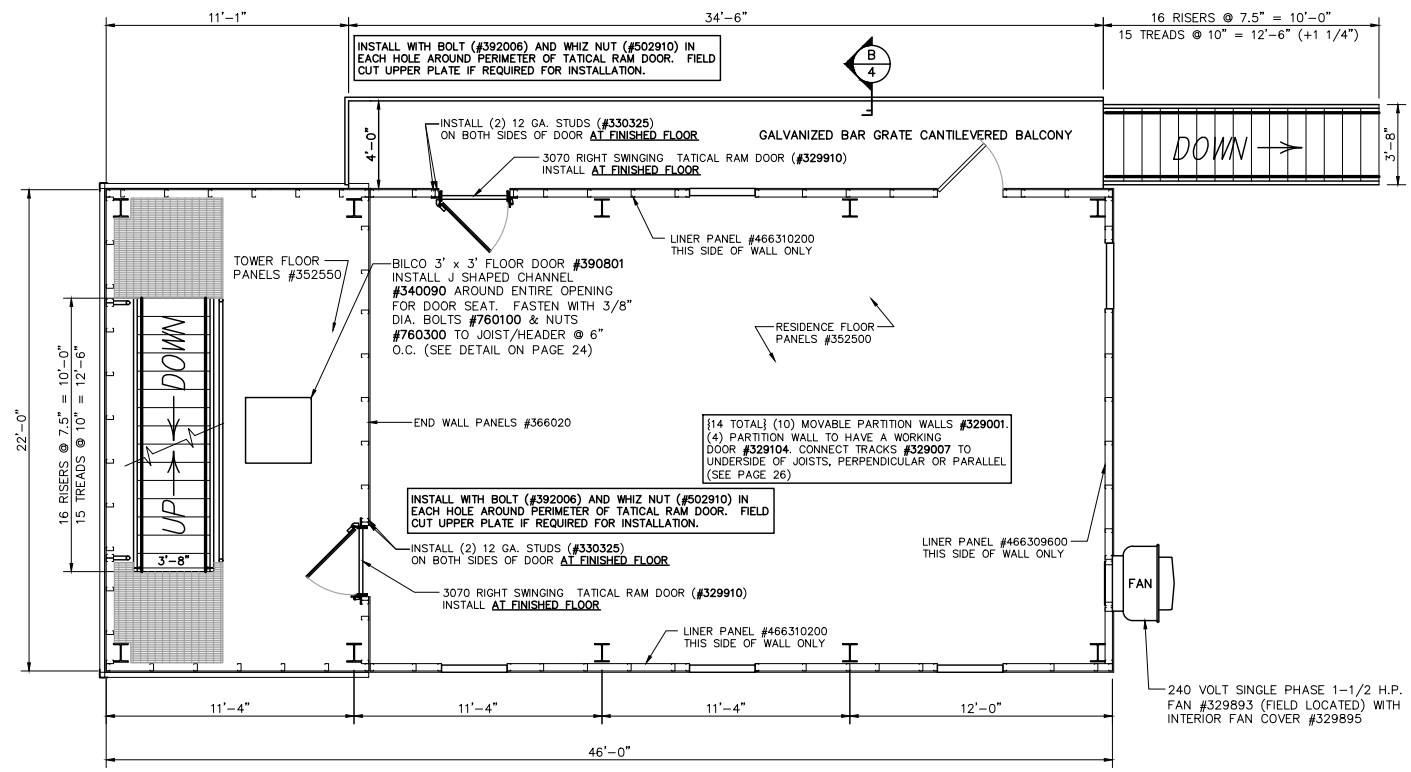


FIRST FLOOR PLAN

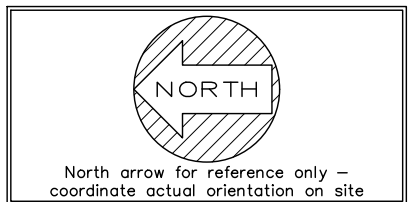
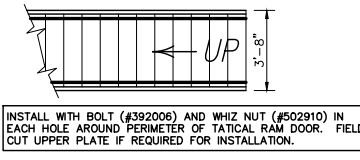
SCALE: 1/4" = 1'-0"

**NOTE: ALL SHUTTERS IN TOWER SWING IN, UNLESS OTHERWISE SHOWN
 ALL SHUTTERS IN ATTIC SWING OUT, UNLESS OTHERWISE SHOWN**

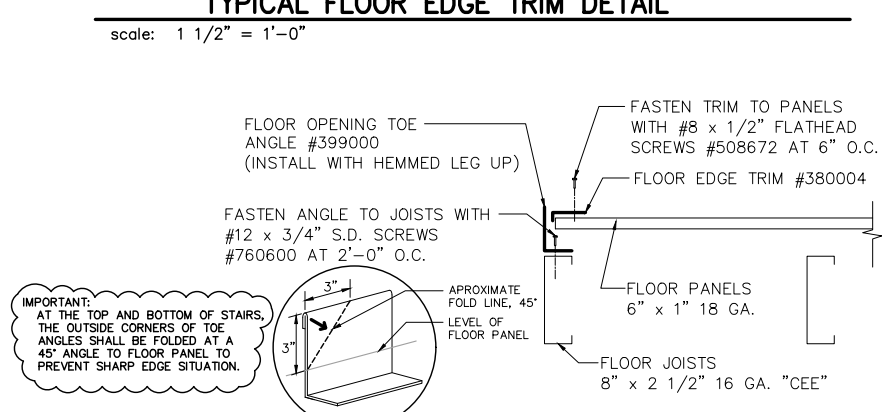
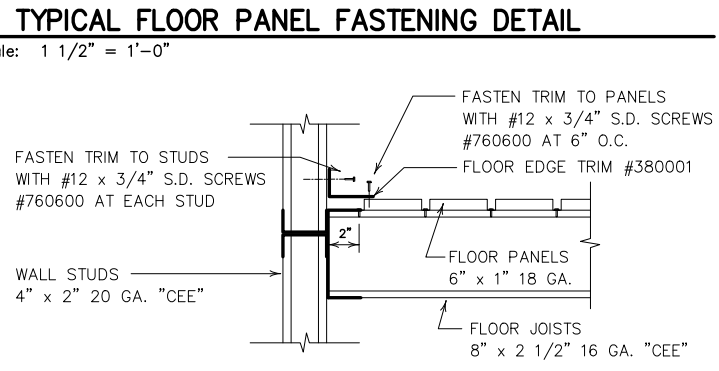
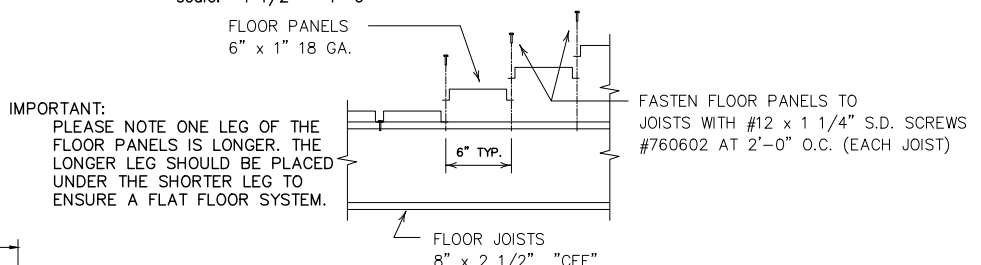
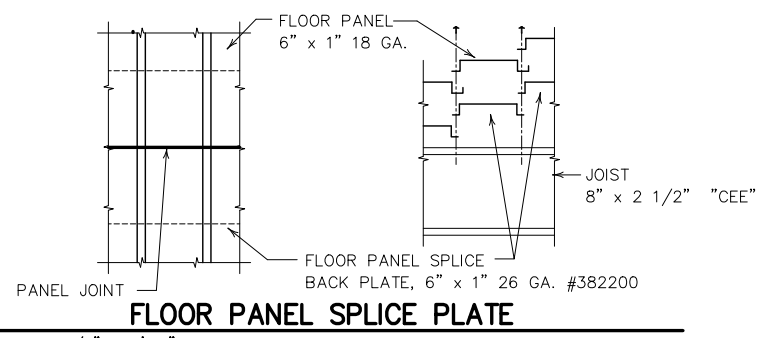


SECOND FLOOR PLAN

SCALE: 1/4" = 1'-0"



DESIGN LOADS:
 ROOF LIVE LOAD: 100 PSF
 FLOOR LIVE LOAD: 100 PSF
 WIND LOAD: 100 MPH
 SEISMIC DESIGN CAT: E
 SITE CLASS: LOCAL
 DESIGN CODE: LOCAL & NFPA 1402



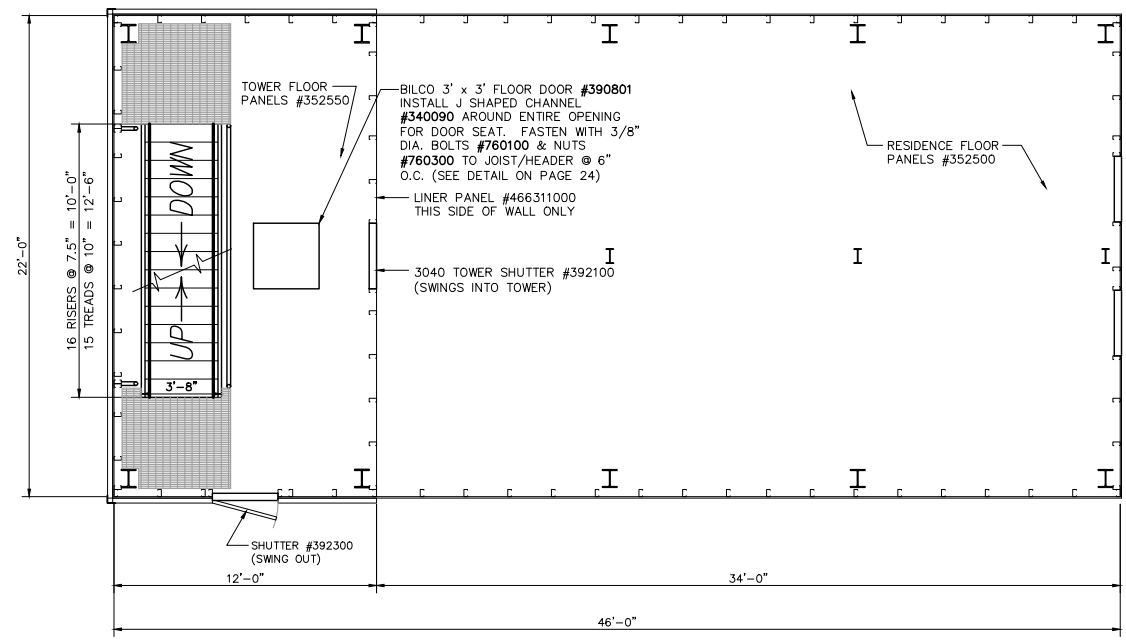
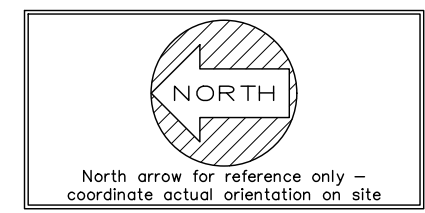
REVISIONS	by
1. BALCONY: 12/06/18	DWK
2. STAIR REMOVED: 12/19/18	DWK
3. OSHA STAIRS: 01/10/20	DWK
4. REVISED: 05/04/20	DWK
5. NOVABRIK: 02/01/21	WDM

THIS DRAWING AND ALL PARTS THEREOF IS THE EXCLUSIVE PROPERTY OF TACTICAL TRAINING SYSTEMS
 314 WILBURN ROAD, SUN PRAIRIE, WI 53590
 OFFICE: (608) 327-4100 FAX (608) 834-1843
 AND MAY NOT BE REPRODUCED IN WHOLE OR PART WITH OUT WRITTEN PERMISSION.

TACTICAL TRAINING SYSTEMS
 - A DIVISION OF FIRE FACILITIES, INC.
 314 WILBURN ROAD, SUN PRAIRIE, WI 53590
 OFFICE: (608) 327-4100 FAX (608) 834-1843
 TOLL FREE (800) 929-3726 TOLL FREE FAX (866) 639-7072

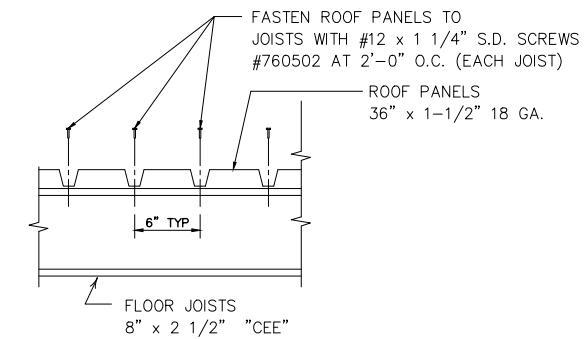
Job Description:	SERIES 4000 TOWER/RESIDENCE CUSTOM DUBLIN, CA
Date:	FEBRUARY 01, 2021
Drawn by:	WDM
Checked by:	SPW
Scale:	SHOWN
Order No.:	#5103
Sheet No.:	FLOOR PLANS

REVISIONS	by
1. BALCONY: 12/06/18	DWK
2. STAIR REMOVED: 12/19/18	DWK
3. OSHA STAIRS: 01/10/20	DWK
4. REVISED: 05/04/20	DWK
5. NOVABRIK: 02/01/21	WDM

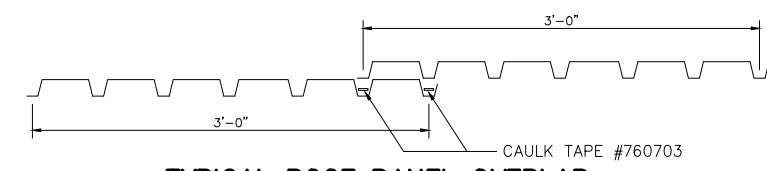


TOWER THIRD FLOOR & ATTIC PLAN

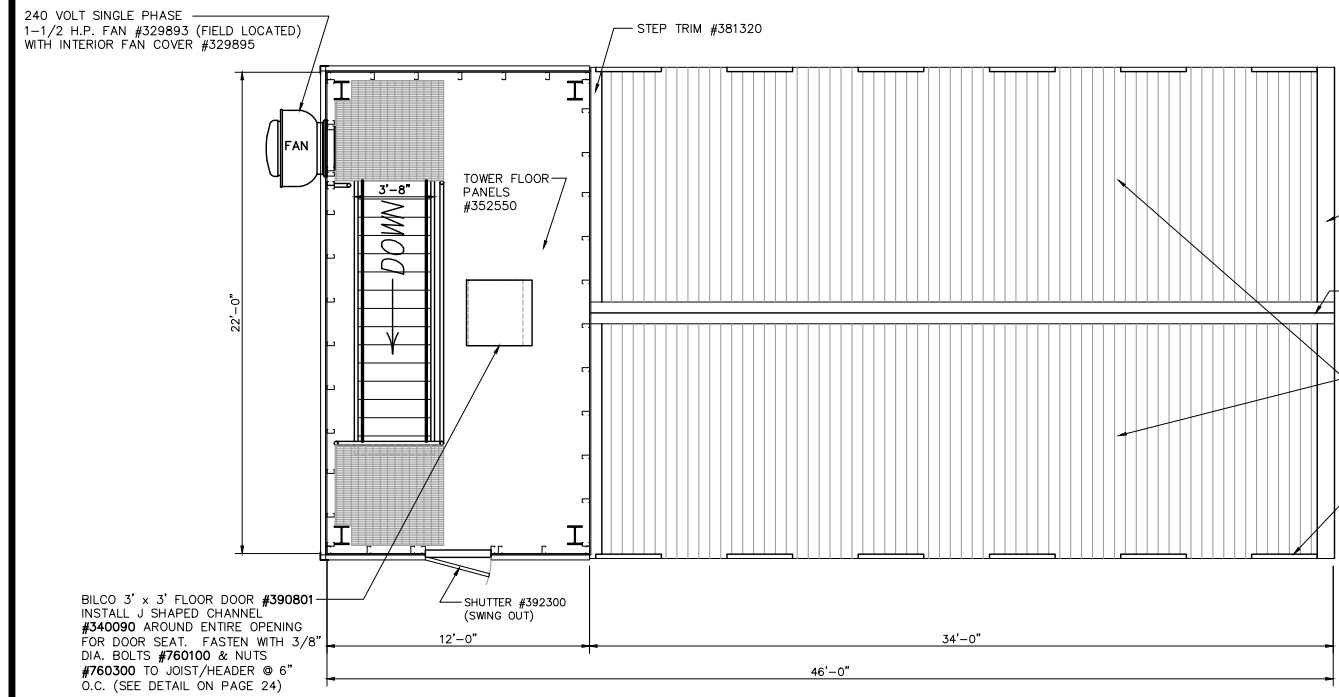
SCALE: 1/4" = 1'-0"



TYPICAL ROOF PANEL FASTENING DETAIL
scale: 1 1/2" = 1'-0"



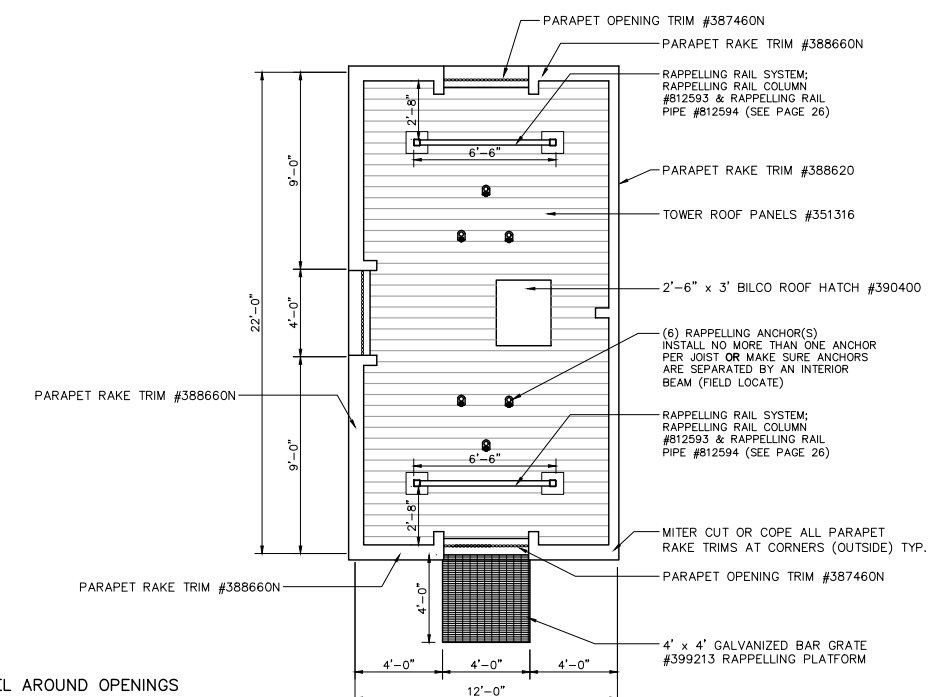
TYPICAL ROOF PANEL OVERLAP
scale: 1 1/2" = 1'-0"



TOWER FOURTH FLOOR AND RESIDENCE ROOF PLAN

SCALE: 1/4" = 1'-0"

NOTE: FIELD CUT ROOF PANEL AROUND OPENINGS



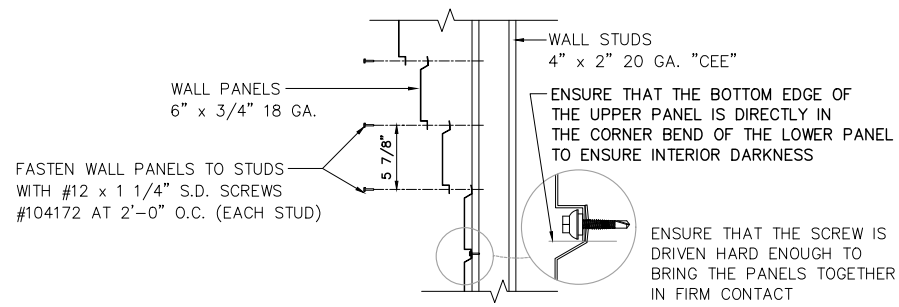
TOWER ROOF PLAN

SCALE: 1/4" = 1'-0"

THIS DRAWING AND ALL PARTS THEREOF IS THE EXCLUSIVE PROPERTY OF TACTICAL TRAINING SYSTEMS
314 WILBURN ROAD, SUN PRAIRIE, WI 53590
OFFICE: (608) 327-4100 FAX (608) 834-1843
AND MAY NOT BE REPRODUCED IN WHOLE OR PART WITH OUT WRITTEN PERMISSION.

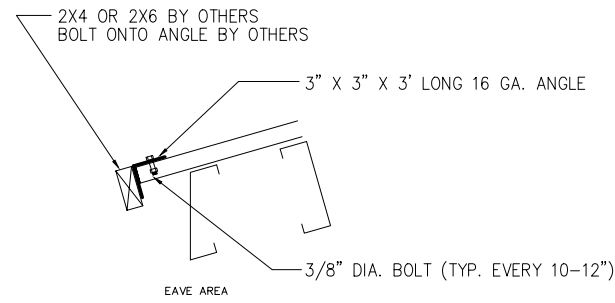
TACTICAL TRAINING SYSTEMS
- A DIVISION OF FIRE FACILITIES, INC.
314 WILBURN ROAD, SUN PRAIRIE, WI 53590
OFFICE: (608) 327-4100 FAX (608) 834-1843
TOLL FREE (800) 929-3726 TOLL FREE FAX (866) 639-7072

Job Description:	SERIES 4000 TOWER/RESIDENCE
	CUSTOM DUBLIN, CA
Date:	FEBRUARY 01, 2021
Drawn by:	WDM
Checked by:	SPW
Scale:	SHOWN
Order No.	#5103
Sheet No.	



TYPICAL WALL PANEL FASTENING DETAIL

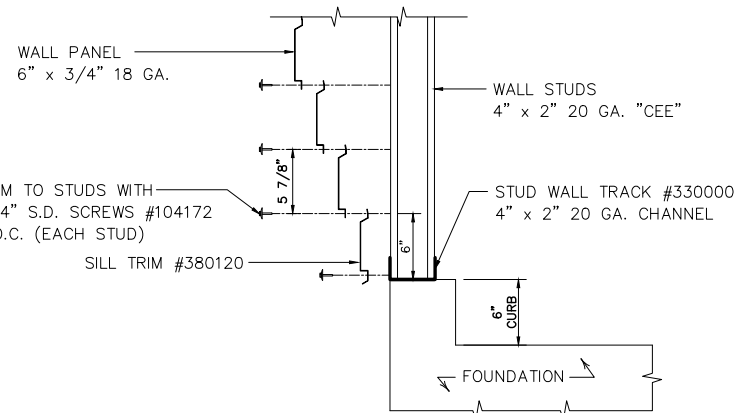
scale: 1 1/2" = 1'-0"



BRACKETS FOR 2X4 FENDER DETAILS

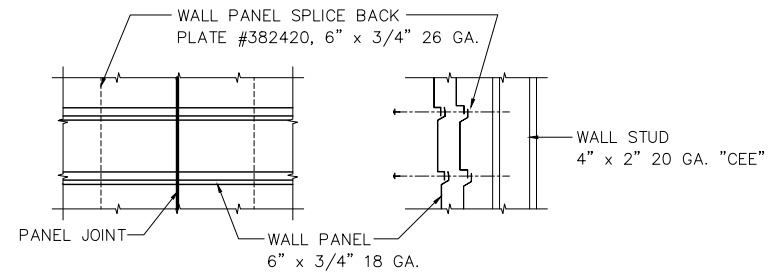
scale: 1 1/2" = 1'-0"

- NOTES:
1. WALL PANEL MUST BE FIELD CUT AROUND FRAMED OPENINGS
 2. TRIMS ARE IN STANDARD 10' LENGTHS SOME FIELD CUTTING OF TRIMS IS REQUIRED



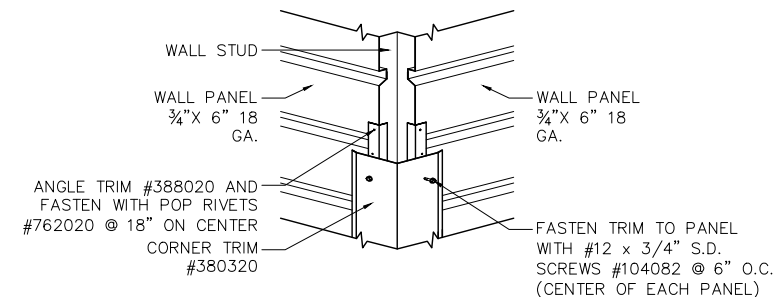
TYPICAL SILL DETAIL

scale: 1 1/2" = 1'-0"



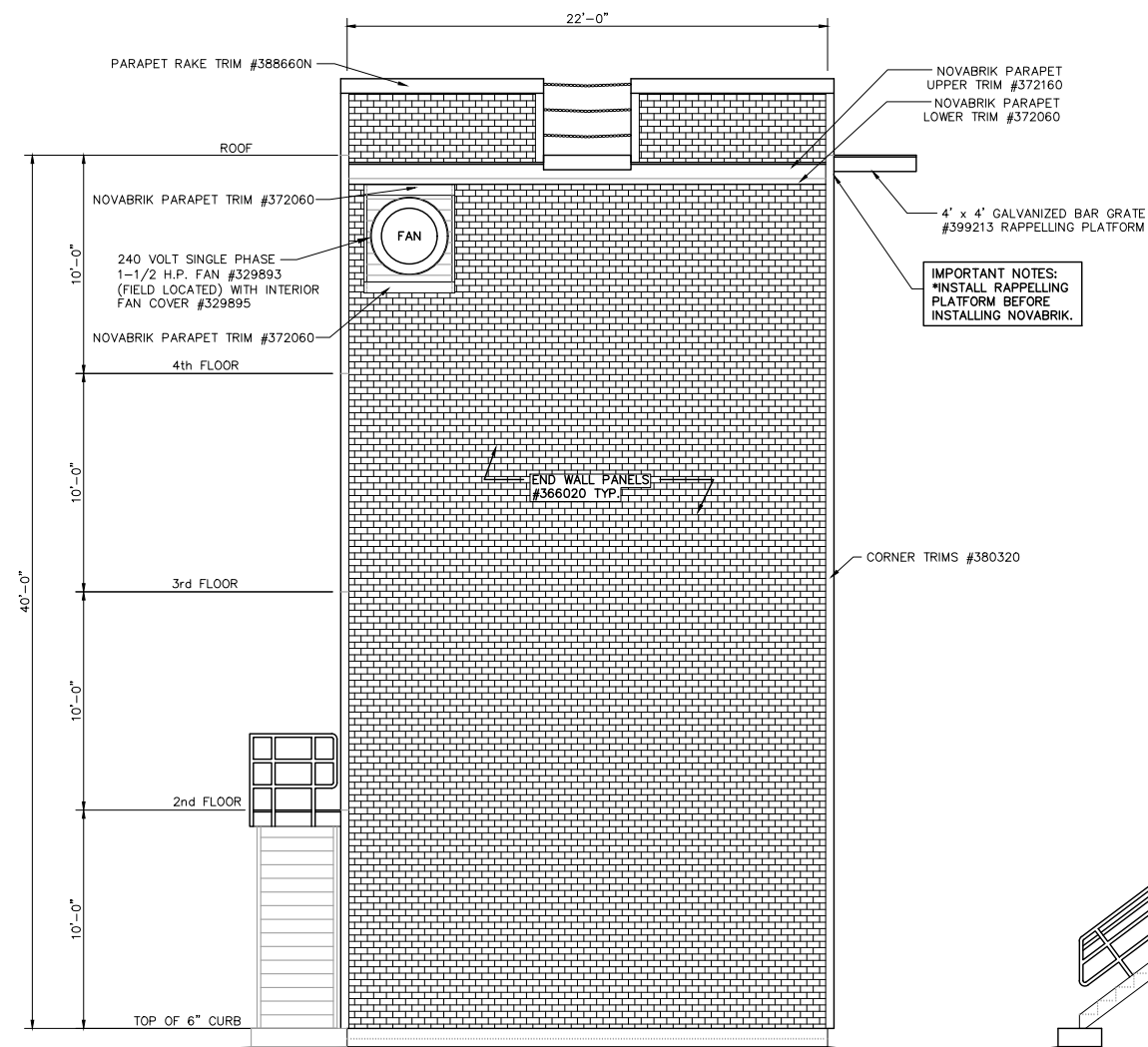
WALL PANEL SPLICE PLATE

scale: 1 1/2" = 1'-0"



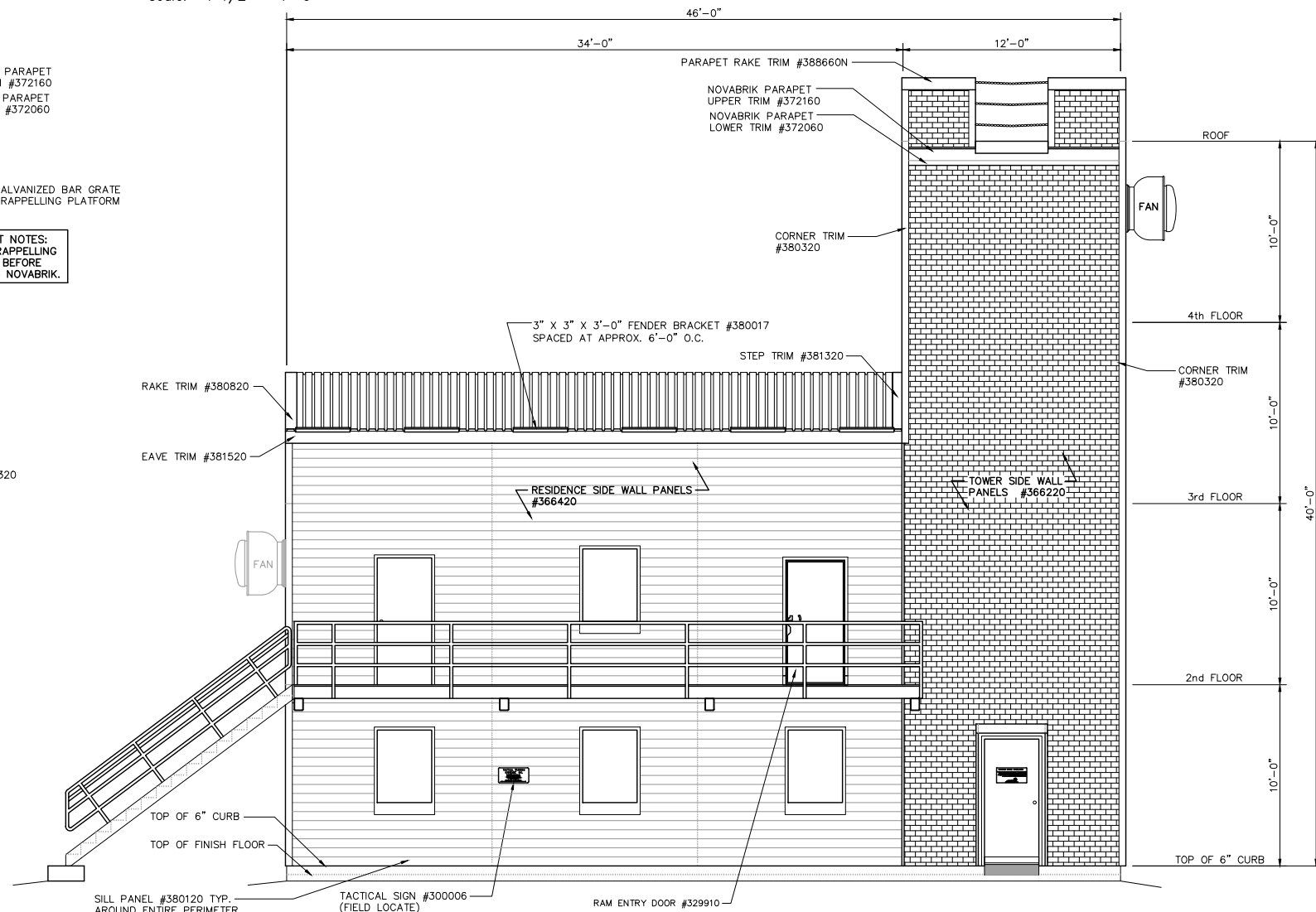
TYPICAL EXTERIOR CORNER TRIM DETAIL

scale: 1 1/2" = 1'-0"



NORTH END ELEVATION

SCALE: 1/4" = 1'-0"



EAST SIDE ELEVATION

SCALE: 1/4" = 1'-0"

REVISIONS	by
1. BALCONY: 12/06/18	DWK
2. STAIR REMOVED: 12/19/18	DWK
3. OSHA STAIRS: 01/10/20	DWK
4. REVISED: 05/04/20	DWK
5. NOVABRIK: 02/01/21	WDM

THIS DRAWING AND ALL PARTS THEREOF IS THE EXCLUSIVE PROPERTY OF TACTICAL TRAINING SYSTEMS
 314 WILBURN ROAD, SUN PRAIRIE, WI 53590
 OFFICE: (608) 327-4100 FAX (608) 834-1843
 AND MAY NOT BE REPRODUCED IN WHOLE OR PART WITH OUT WRITTEN PERMISSION.

TACTICAL TRAINING SYSTEMS
 - A DIVISION OF FIRE FACILITIES, INC.
 314 WILBURN ROAD, SUN PRAIRIE, WI 53590
 OFFICE: (608) 327-4100 FAX (608) 834-1843
 TOLL FREE (800) 929-3726 TOLL FREE FAX (866) 639-7012

Job Description: **SERIES 4000 TOWER/RESIDENCE CUSTOM DUBLIN, CA**

Date: FEBRUARY 01, 2021

Drawn by: WDM

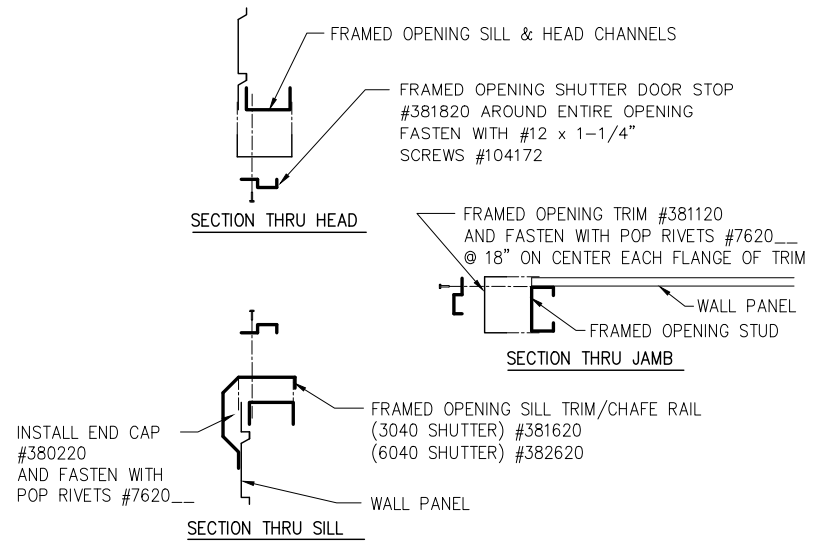
Checked by: SPW

Scale: SHOWN

Order No. #5103

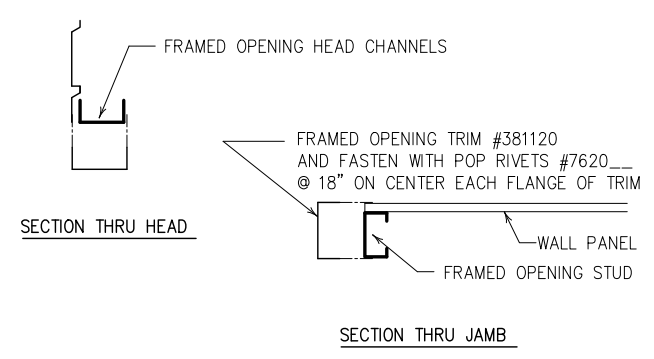
Sheet Title: ELEVATIONS

REVISIONS	by
1. BALCONY: 12/06/18	DWK
2. STAIR REMOVED: 12/19/18	DWK
3. OSHA STAIRS: 01/10/20	DWK
4. REVISED: 05/04/20	DWK
5. NOVABRIK: 02/01/21	WDM

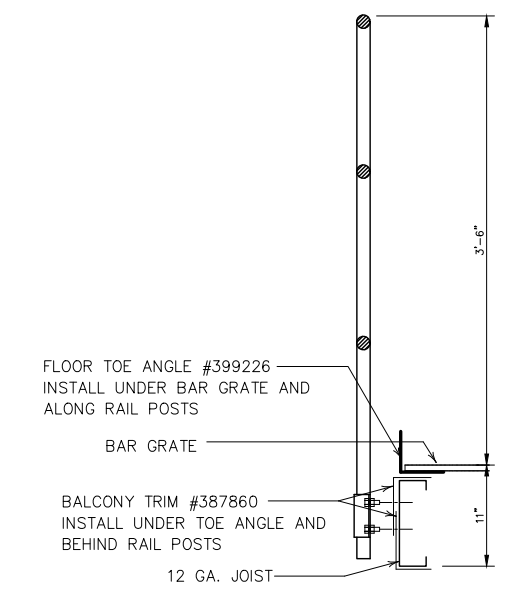


STANDARD SHUTTER TRIM DETAILS

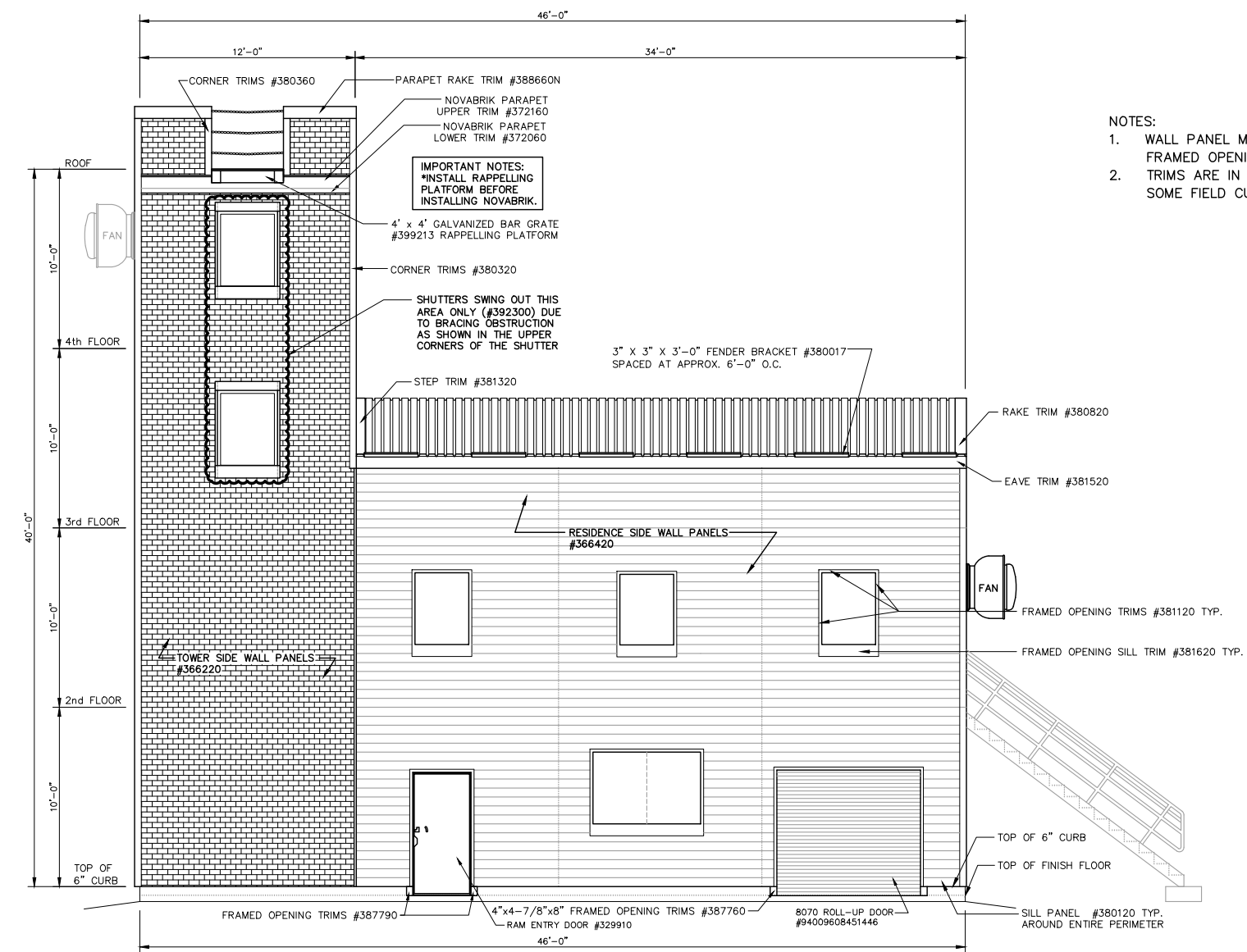
scale: 1 1/2" = 1'-0"



TOWER SWING DOOR TRIM DETAILS



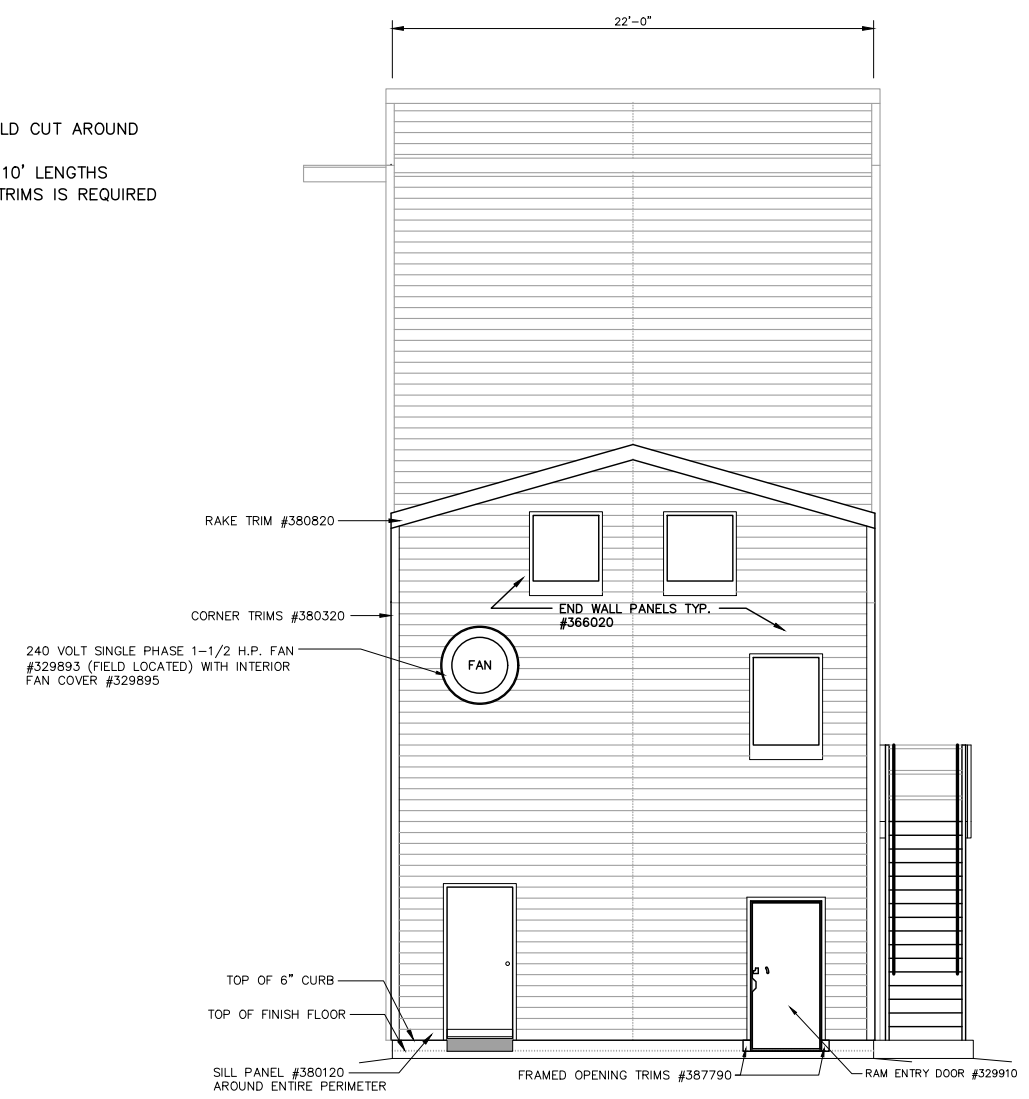
SECTION THRU CANT. BALCONY HANDRAIL



WEST SIDE ELEVATION

SCALE: 1/4" = 1'-0"

- NOTES:
1. WALL PANEL MUST BE FIELD CUT AROUND FRAMED OPENINGS
 2. TRIMS ARE IN STANDARD 10' LENGTHS SOME FIELD CUTTING OF TRIMS IS REQUIRED



SOUTH END ELEVATION

SCALE: 1/4" = 1'-0"

THIS DRAWING AND ALL PARTS THEREOF IS THE EXCLUSIVE PROPERTY OF TACTICAL TRAINING SYSTEMS
314 WILBURN ROAD, SUN PRAIRIE, WI 53590
OFFICE: (608) 327-4100 FAX (608) 834-1843
AND MAY NOT BE REPRODUCED IN WHOLE OR PART WITH OUT WRITTEN PERMISSION.

TACTICAL TRAINING SYSTEMS
- A DIVISION OF FIRE FACILITIES, INC.
314 WILBURN ROAD, SUN PRAIRIE, WI 53590
OFFICE: (608) 327-4100 FAX (608) 834-1843
TOLL FREE (800) 929-3736 TOLL FREE FAX (866) 639-7012

Job Description: **SERIES 4000 TOWER/RESIDENCE CUSTOM DUBLIN, CA**

Date: FEBRUARY 01, 2021

Drawn by: WDM

Checked by: SPW

Scale: SHOWN

Order No. #5103

Sheet Title: ELEVATIONS