



**Request for Prequalification
of Design Build Entities for:
Alameda County Fire Training Center Project**

June 29, 2023

Project No. CAP 21-AFCD-CNTR

TABLE OF CONTENTS

NOTICE OF PREQUALIFICATION REQUIREMENT.....	2
General Description of the Project	2
Competitive Selection Process	3
Prequalification Requirements	3
Definition of What Comprises a Design-Build Entity	4
Important Provisions of the Public Contract Code Related to Prequalification.....	6
County of Alameda Reservations.....	7
Review and Notification Process	7
Appeal Process	8
Prequalification Point of Contact	11
EXPLANATION OF SCORING FRAMEWORK.....	14
INSTRUCTIONS FOR PREQUALIFICATION SUBMISSION.....	18
PREQUALIFICATION QUESTIONNAIRE	PQ-2
Part I: Information About the Design-Build Entity, Its Members, and Core Organizations	PQ-2
Part II: Essential Requirements for the Design-Build Entity as a Whole	PQ-27
Part III: Scored Questions for Members of the Design Build Entity and Core Organizations.....	PQ-33
Part IV: Recent Construction Projects Completed.....	PQ-69
Part V: Key Personnel.....	PQ-75
Part VI: Certification	PQ-82
REFERENCE INTERVIEW QUESTIONS.....	RI-2
SCORING WORKSHEETS	SW-2
Attachment 1 - Organizational Conflict-of-Interest Policy for Design-Build Projects	

Notice of Prequalification Requirement

NOTICE OF PREQUALIFICATION REQUIREMENT

In accordance with its **Notice of Request for Prequalification of Design Build Entities**, the County of Alameda (“County”) hereby gives notice it is requesting qualifications for design-build services to construct a new Fire Training Center and that the County has determined that all Design Build Entities must be prequalified.

GENERAL DESCRIPTION OF THE PROJECT

The Work includes but is not limited to, design, site preparation, and construction of a new fire training facility. The site extends across 3.2 acres within an approximately 5.2-acre County-owned parcel adjacent to Fire Station 17 on Gleason Drive in Dublin, CA.

The new fire-training center will consist of an 8,000 square foot training building with classrooms, offices, storage, and exercise Centers. In addition, there will be an approximately 5,500 square foot five-story training tower with simulation rooms for smoke and burning scenarios, equipment storage, and a training control room. There will be parking of approximately 43 spaces, as well as paving enough to meet facility needs, site improvements comprised of landscaping, infrastructure, and public art.

Programmatically, the proposed facility includes two classrooms with restroom/locker facilities, a multi-story training tower with burn room, roof props, apparatus bay and cantilevered platforms for rappel training. The site includes trench rescue and confined space training areas, as well as paved areas for fire apparatus and other emergency response vehicle training exercises. The five-story training tower shall be designed to specifically help firefighters prepare for the types of buildings they will encounter in emergencies and in real life scenarios. The facility shall provide real-life simulation props/sites that cannot be replicated at a fire station or in the community, such a smoke-filled room with fire that simulates a garden apartment or large commercial facility. Firefighters should be able to ascend through stairwells of a five-story building or utilize ladders on the exterior, cut into portions of the roof to simulate residential or commercial roofs, go into trenches or underground vaults to simulate rescuing a victim(s). The tower’s sides should mimic apartment buildings and high-rise business towers commonly found throughout Alameda County.

The estimated project construction costs, including Design-Build Architect/Engineering Fees, for building, sitework, and Owner Allowance(s) is approximately \$24,000,000.

The following link to the Alameda County Fire Training Center Preliminary Bridging Drawings prepared by RossDrulisCusenbery, Architecture, Inc. (RDC) graphically describes the Project.

https://acgovt-my.sharepoint.com/:b:/g/personal/patrick_lam_acgov_org/EfE93-k5Hy5MgRrUQvEdLVsB6Gqh-3gwQV5Temgk9uoJXg?e=9RihMr

The County has retained Sixth Dimension PMCM|Kitchell CEM (“6D|KCEM”), for Project and Construction Management support services.

The Design Build Entity and each Design Build Entity member and its sub-contractors will be required to execute the County's standard Project Stabilization Community Benefit Agreement (PSCBA) adopted by the County of Alameda Board of Supervisors. The Design Build Entity entering into a PSCBA is in lieu of the Design Build Entity providing an enforceable commitment to the County that it and its sub-contractors at every tier will use a skilled and trained workforce to perform all work on the project as required by Public Contract Code section 22164(c).

COMPETITIVE SELECTION PROCESS

In accordance with Public Contract Code (PCC) sections 22160, 22161, 22164 and 22166, the County will select a Design-Build ("Design Build") Entity to construct the Project through a public, two-step Best Value Selection process:

- **Step 1:** Prequalification Phase of responsible Design Build Entities.
- **Step 2:** Proposal Phase during which the County will consider proposals submitted by the prequalified shortlisted Design Build Entities.

Only the four (4) highest ranked Design Build Entities that are successfully qualified and shortlisted in Step 1 will be allowed to participate in Step 2. The County intends to award the contract on a Best Value Basis.

PREQUALIFICATION REQUIREMENTS

It is mandatory that all Design Build Entities complete the Prequalification Questionnaire, provide ALL materials requested herein, and be "qualified" by the County to be on the RFP shortlist. No proposal will be accepted from a Design Build Entity that has failed to comply with the requirements of the Prequalification Document.

Prequalification Questionnaires that fail to clearly present ALL of the requested information, present false or misleading information, or are not submitted in the format requested may be considered nonresponsive and rejected on that basis.

While the Prequalification Questionnaire and required attachments are intended to assist the County in determining bidder responsibility prior to receipt of proposals, the County reserves the right to reference other sources available in its prequalification assessment of Design Build Entities. The County's prequalification determinations will be based on objective evaluation criteria.

However, neither the fact of prequalification, nor any prequalification rating, will preclude the County from additional post-proposal consideration and determination of whether a bidder has demonstrated the requisite trustworthiness, quality, fitness, capacity and experience to satisfactorily perform the proposed Project work.

DEFINITION OF WHAT COMPRISES A DESIGN-BUILD ENTITY

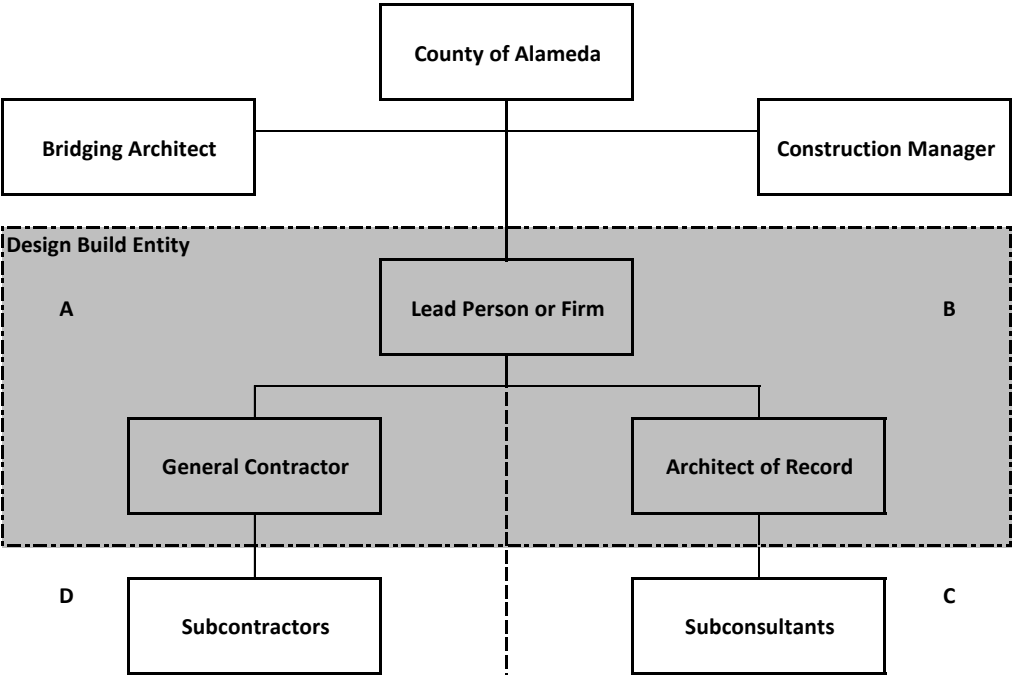
A Design-Build Entity is defined by Public Contract Code section 22161(d) as a corporation, limited liability company, partnership, joint venture, or other legal entity that is able to provide appropriately licensed contracting, architectural, and engineering services as needed pursuant to a design-build contract.

For purposes of the Project prequalification, each Design Build Entity must identify and provide information for certain Core Organizations. Those Core Organizations, listed immediately below, must individually complete the appropriate, scored-question portions of the Prequalification Questionnaire and obtain a passing score for the Design Build Entity as a whole to be qualified. The Core Organizations that must be listed for Prequalification are:

- | | |
|--|--|
| <ul style="list-style-type: none">▪ General Contractor (GC) <p><i>Core Sub-Contractors</i></p> <ul style="list-style-type: none">▪ Mechanical Sub-contractor▪ Electrical Sub-contractor▪ Plumbing Sub-contractor▪ Structural/Framing Sub-contractor▪ Fire Life/Safety | <ul style="list-style-type: none">▪ Architect (A/E) <p><i>Core Sub-Consultants</i></p> <ul style="list-style-type: none">▪ Mechanical/Plumbing Engineer▪ Electrical Engineer▪ Civil Engineer▪ Structural Engineer▪ Fire Life/Safety |
|--|--|

The Core Organizations identified in response to this Prequalification Document must be selected by each Design Build Entity on qualifications alone. Pursuant to Public Contract Code section 22166, the services of other sub-contractors or sub-consultants who are not identified as core members must be procured in accordance with Public Contract Code section 4100 et seq. subsequent to selection of the Design Build Entity. *If the Design Build Entity chooses to use a Core Organization with the capability of performing both design and construction services (e.g., a sub-contractor with a licensed engineer and design staff), then that member must successfully qualify within the Prequalification Questionnaire as both the Sub-Consultant and the Sub-Contractor for the relevant disciplines.*

The following diagram, as an example, illustrates the schematic composition of a Design Build Entity and its sub-consultants and sub-contractors. A Design Build Entity must complete the appropriate portions of the Prequalification Questionnaire for the required Core Organizations and may complete them for additional sub-consultants or sub-contractors. There are four portions of the Questionnaire specifically tailored to the general responsibility of the particular Design Build Entity member or organization. Subpart III.A applies to the General Contractor; subpart III.B applies to the Architect; subpart III.C applies to core design Sub-Consultants; and subpart III.D applies to core Sub-Contractors.



IMPORTANT PROVISIONS OF THE PUBLIC CONTRACT CODE RELATED TO PREQUALIFICATION

The County intends to request competitive proposals for design-build services to construct the Project pursuant to California Public Contract Code section 22162 which authorizes the design-build method of procurement for public construction projects in excess of \$1.0 million. This Prequalification Document establishes the standardized prequalification procedure required by section 22164.

In accordance with the requirements described in Public Contract Code section 22164(b)(3) the County has prepared the attached Prequalification Questionnaire on the basis of various model prequalification documents prepared pursuant to the California Department of Industrial Relations. Accordingly, the prequalification procedure described herein: (1) provides a standardized Prequalification Questionnaire, (2) adopts and applies a uniform system for rating bidders on objective criteria, and (3) creates an appeals procedure, by which a Design Build Entity that is found to be not responsive during the Prequalification Phase may dispute that determination.

Except for the Contact Information section (Subpart I.A) of the Prequalification Questionnaire, which will be considered a public record, completed Prequalification Questionnaires and all required attachments submitted by Design Build Entities during the Prequalification Phase shall not be open to public inspection pursuant to Public Contract Code section 20101. The County will keep all such information confidential to the extent permitted by federal and state law. However, the County reserves the right to disclose submitted prequalification information selectively to third parties for purpose of verification, investigation of substantial allegations, or in an appeal hearing.

Public Contracts Code section 22162(c) requires the County to develop an organizational conflict-of-interest policy regarding the ability of a person or entity that performs services for the local agency relating to the solicitation of a design-build project to submit a proposal as a design-build entity, or to join a design-build team. County of Alameda Organizational Conflict of Interest Policy for Design-Build Construction Projects per Public Contract Code Section 22162 is included in Attachment 1 (Organizational Conflict-of-Interest Policy for Design-Build Projects).

The following entities are currently retained by the County or the County's consultants to assist in the development of the bridging and criteria documents and are precluded from being part of any Design Build Entity team:

Entity	Services
Ross Drulis Cusenbery (RDC)	Bridging Documents Architect
MGE Engineering, Inc.	Civil Engineering
IDA Structural Engineering, Inc.	Structural Engineering
Taylor Engineering	Mechanical/Plumbing/FP
Silverman & Light	Electrical

PGA Design, Inc.
Macks Craic, Inc. dba Mack5
TEECOM
Square Peg Design
KW Engineering, Inc.
Claudia Falconer Architect
MIG
Abercrombie Planning+Design
STOK

Landscape Architecture
Cost Estimating
Low Voltage, Telecom
Wayfinding & Sign Design
Energy Engineers
CASP
Environmental/CEQA
Fire Training Consultant
LEED Consultant

COUNTY OF ALAMEDA RESERVATIONS

The County may refuse to grant prequalification where the requested information and materials are not provided, or not provided by the date specified above. There is no appeal from a refusal for an incomplete or late application. The closing time for RFQ Proposals will not be changed to accommodate supplementation of incomplete submissions or late submissions.

The County reserves the right to accept prequalification applications despite minor irregularities and omissions in the information which would otherwise serve to disqualify a Design Build Entity. The County reserves the right to make all final prequalification determinations and to determine at any time that the prequalification procedures will not be applied to the Project.

The County reserves the right to adjust, increase, limit, suspend, or rescind a Design Build Entity's prequalification rating based on subsequently learned information. Design Build Entities whose rating changes sufficient to disqualify them will be notified and given an opportunity for a hearing consistent with the hearing procedures described herein for appealing an initial prequalification determination.

The County may require Design Build Entities that will be using Sub-Contractors who are not Core Organizations identified during prequalification to: (1) submit the qualifications of certain Sub-Contractors as specified in the proposal documents, and (2) participate in post-bid qualification review. Compliance with such requirements, if imposed, will follow acceptance of a proposal, but will occur before an award is made.

REVIEW AND NOTIFICATION PROCESS

The completed Prequalification Questionnaire with required attachments must be submitted by the deadline specified below. Once received, the review and notification process will be as follows:

1. Receipt: The original Prequalification Questionnaire with required attachments will be stamped upon receipt with an official date and time of receipt.
2. Completeness Review: Each prequalification submission will be reviewed for completeness by County staff within SEVEN (7) calendar days from the deadline date. The Design Build Entity will then be notified as to completeness by electronic mail. If the prequalification submission is not complete, the Design Build entity will have FOUR (4) calendar days from such notification to add whatever information is needed to make

- its prequalification submission complete. If the prequalification submission is complete, it will proceed to Staff Review.
3. Staff Review: Complete Prequalification Questionnaire with required attachments will be reviewed by County staff within TWENTY-ONE (21) calendar days from the submission deadline date.
 4. Qualification Notification: The Design Build Entity will be notified of their qualification ranking by electronic mail within THIRTY (30) calendar days from the submission deadline date.
 5. Sub-Consultant/Contractor Substitutions: If notified that a proposed Sub-Consultant or Sub-Contractor has been disqualified, an otherwise qualified Design Build Entity must submit all relevant information requested in this Questionnaire for a proposed substitute Sub-Consultant/Contractor within FOURTEEN (14) calendar days of receiving such qualification notification. Failure to propose a qualified substitute Sub-Consultant/Contractor will result in an otherwise qualified Design Build Entity being rated as “Non-Qualified” for this project.

If the Design Build Entity is rated as “Qualified” for the Project and ranks in the top four for RFQ scoring, it will be “eligible” for proposing on the Project and will be notified of the opportunity to participate in the RFP process when the proposal documents are issued. If the Design Build Entity is rated as “Non-Qualified” for this Project, it may initiate an appeal process as described below.

APPEAL PROCESS

The following is provided in the event that the non-qualifying Design Build Entity(s) wish to appeal the pre-qualification process or appeal the recommendation to deny the pre-qualification.

Any pre-qualification appeal must be submitted in writing by 5:00 p.m. on the SEVENTH (7th) calendar day following the date the County issues notice of non-qualification (not the date the Design Builder receives such notification of non-qualification). The pre-qualification appeal must be submitted to the office that has been designated for review of appeals for this procurement (the Appeal Evaluator). For this procurement, the Appeal Evaluator is:

GSA–Office of Acquisition Policy (OAP)
ATTN: Chief Deputy Director, Administration
OAP, General Services Agency
1401 Lakeside Drive, 10th Floor, Oakland, CA 94612
Email: GSA-BidProtests@acgov.org

An appeal received after 5:00 p.m. is considered received as of the next calendar day. An appeal received after 5:00 p.m. on the SEVENTH (7th) calendar day following the date of issuance of the notice of non-qualification will not be considered under any circumstances by the Appeal Evaluator or their designee. The County will send an email acknowledging receipt of the appeal; however, it is

the responsibility of the protestor to confirm that the appeal was timely received. All Design Builders will be notified if an appeal is received.

The appeal must contain a complete statement of the reasons and facts for the appeal. The appeal must refer to the specific portions of all documents that form the basis for the appeal. The appeal must include the company name, name, address, email address, and telephone number of the person submitting the appeal on behalf of the protesting party.

The Appeal Evaluator, or their designee, will review and evaluate the appeal and issue a written decision. The Appeal Evaluator may, at its discretion, do any of the following: investigate the appeal, obtain additional information, provide an opportunity to settle the appeal by mutual agreement, and schedule a meeting(s) with the appealing Design Builder and others (as appropriate) to discuss the appeal. The decision on the appeal must be finalized prior to the Board hearing.

Notification of the decision will be communicated by email and/or US Postal Service mail to the appellant. Notification will be provided to all pre-qualified Contactors when a decision has been made on the appeal and whether the Notification of Qualified Design Builders will stand.

The decision on the non-qualification appeal by the Appeal Evaluator may be appealed to the Auditor-Controller's Office of Contract Compliance & Reporting (OCCR) located at 1221 Oak St., Room 249, Oakland, CA 94612, Email: OCCR@acgov.org, unless the OCCR determines that it has a conflict of interest in which case an alternate will be identified to hear the appeal and all steps to be taken by OCCR will be performed by the alternate. The non-qualifying Design Builder whose qualifications are the subject of the appeal, all pre-qualified Design Builders affected by the Appeal Evaluator's decision on the appeal, and the appellant have the right to appeal if they feel the Appeal Evaluator's decision is incorrect. All appeals to the Auditor-Controller's OCCR must be in writing and submitted within SEVEN (7) calendar days following the issuance of the decision, not the date the decision is received by the non-qualified Design Builder. An appeal received after 5:00 p.m. is considered received as of the next calendar day. An appeal received after 5:00 p.m. on the SEVENTH (7th) calendar day following the date of issuance of the decision by the Appeal Evaluator will not be considered under any circumstances by the Auditor-Controller OCCR or their designee.

The appeal must specify the decision being appealed and all the facts and circumstances relied upon in support of the appeal. In reviewing protest appeals, the OCCR will not re-judge the proposal(s). The appeal to the OCCR must be limited to a review of the procurement process to determine if the contracting department materially erred in following the bid or, if applicable, County contracting policies or other laws and regulations. The appeal to the OCCR must be limited to the grounds raised in the original protest and the written decision by the Appeal Evaluator. As such, a non-qualifying Design Builder is prohibited from stating new grounds for a prequalifying protest in its appeal.

The Auditor's Office may overturn the results of a non-qualification appeal process for ethical violations by Procurement staff, County Selection Committee members, subject matter experts, or

any other County staff managing or participating in the competitive bid process, regardless of timing or the contents of a bid protest. The finding of the Auditor-Controller's OCCR is the final step of the appeal process. A copy of the finding of the Auditor-Controller's OCCR will be furnished to the appellant.

The finding on the appeal will be issued before the approved by the Board of Supervisors of a Contract for the Work.

The procedures and time limits set forth in this section are mandatory and are each prequalifying Design Builder's sole and exclusive remedy in the event of a pre-qualification appeal. A pre-qualifying Design Builder's failure to timely complete the appeal procedures will be deemed a failure to exhaust administrative remedies. Failure to exhaust administrative remedies, or failure to comply otherwise with these procedures, will constitute a waiver of any right to further pursue a pre-qualification appeal, including filing a Government Code Claim or legal proceedings.

PREQUALIFICATION POINT OF CONTACT

Any questions regarding the Project and the Prequalification process should be directed to:

Patrick Lam, Senior Project Manager
County of Alameda – General Services Agency
1401 Lakeside Drive, Suite 800
Oakland, CA 94612-4305
Tel (510) 208-9522
Email: patrick.lam@acgov.org

All requests for clarifications shall be received by the County no later than July 10, 2023.

RFQ ADDENDA

Should there be a need to issue clarifications to this RFQ, the County will issue an addendum. Clarification requests shall be via email to the point of contact for the County.

Please check the website below frequently for any addenda. Any addenda will be posted on the website below no later than three business days prior to the RFQ submission date. It is the responsibility of each firm to make itself aware of any addenda with or without further notice from the County.

Website: <https://gsa.acgov.org/do-business-with-us/contracting-opportunities/>

ANTICIPATED PROJECT SCHEDULE (ALL DATES ARE SUBJECT TO CHANGE)

Issue RFQ	June 29, 2023
Non-Mandatory Informational DBE RFQ Conference	July 6, 2023
DB's Submit Prequalification Questionnaire	July 28, 2023
Complete Evaluation of Prequalification Questionnaire	August 25, 2023
Notice to Shortlist	August 28, 2023
Issue RFP to DBEs	September 29, 2023
DBEs Submit RFP	January 25, 2024
AC Reviews DBE Submittals	January – February 2024
Confidential Interviews	February 2024
Notice to Award	March 2024
BOS Award	April 2024
Issue NTP	April 2024
Design	April – Nov. 2024
Construction	Oct. 2024 – April 2026

NON-MANDATORY INFORMATIONAL RFQ CONFERENCE

A non-mandatory informational conference is scheduled for Wednesday, July 6, 2023, from 3 – 5 PM via Teams.

REQUEST FOR PROPOSAL (RFP) STIPEND

County of Alameda intends to offer each of the final four (4) unsuccessful and responsive short-listed Design Build Teams a tiered stipend with \$50,000 to the Design Build Entity with the second highest score, \$35,000 to the Design Build Entity with the third highest score and \$25,000 to the Design Build Entity with the fourth highest score to assist in defraying the costs of proposal development. As outlined in the RFP Documents, each firm understands that the stipend may not reimburse it for all expenses incurred in preparing the proposal. The RFP documents will require all four (4) shortlisted Design Build Teams to execute and deliver a stipend agreement to County of Alameda.

COUNTY OF ALAMEDA SMALL LOCAL AND EMERGING BUSINESS PROGRAM

Each Design Build Entity shall include in the letter of transmittal a description of the outreach efforts that your firm made to include Small Local Emerging Business (SLEB) sub-consultant(s).

Website: <http://www.acgov.org/auditor/sleb/index.htm>

Note: For the RFP stage (for the short-listed firms), there will be additional outreach requirements and those will be addressed in the RFP to be issued. (RFP shall include requirements associated with County of Alameda Outreach Program). Bidders not meeting the definition of a small or emerging local business must sub-consultant with one or more County certified small and/or emerging local businesses for at least twenty percent (20%) of the professional services portion of the contract in order to be considered for contract award.

PROJECT STABILIZATION AND COMMUNITY BENEFITS AGREEMENT

Proposals submitted for this project will be subject to the Project Stabilization Community Benefits Agreement (“PSCBA”) adopted by the County of Alameda Board of Supervisors, which applies to all construction projects of \$1 Million or more awarded by the Board. The successful Design Build Entity contractor and its partners providing work in any covered trade will be signatory to the PSCBA.

Website: <https://gsa.acgov.org/do-business-with-us/vendor-support/construction-support-requirements/>

Explanation of Scoring Framework

EXPLANATION OF SCORING FRAMEWORK

The prequalification determination for a Design Build Entity will result from consideration of the scores attained in all parts of the Prequalification Questionnaire.

PART I: INFORMATION ABOUT THE DESIGN BUILD ENTITY AND EACH OF ITS MEMBERS

Part I applies to the Design Build Entity as a whole and to each of its Core Organizations and is for identification purposes only. There is no scoring value to this part.

Subpart I.A is the only public record portion of the Project Prequalification Questionnaire.

PART II: ESSENTIAL REQUIREMENTS FOR THE DESIGN BUILD ENTITY AS A WHOLE

Part II applies to the Design Build Entity as a whole and consists of a series of pass/fail qualification questions. All questions must be answered correctly, or the Design Build Entity may be disqualified with no consideration given to the remainder of the Questionnaire.

PART III: SCORED QUESTIONS FOR INDIVIDUAL MEMBERS OF THE DESIGN BUILD ENTITY AND CORE ORGANIZATIONS

Subpart III.A: Scored Questions for the General Contractor

Subpart III.A applies to the General Contractor. It consists of a series of questions that must be answered, each of which has an established numerical score for potential answers (as shown in the sample Scoring Worksheet provided herein). The total score attained establishes the rating for the Design Build Entity's General Contractor.

There is a maximum possible score of 113 in this subpart. A minimum score of 86 must be attained or the General Contractor will be rated as not qualified, which will disqualify the Design Build Entity. A score at or above the minimum will be combined with the scores of the other parts of the Prequalification Questionnaire to determine the Total Score for the Design Build Entity.

Subpart III.B: Scored Questions for the Architect

Subpart III.B applies to the Architect. It consists of a series of questions that must be answered, each of which has an established numerical score for potential answers (as shown in the sample Scoring Worksheet provided herein). The total score attained establishes the rating for the Design Build Entity's Architect.

There is a maximum possible score of 45 for this subpart. A minimum score of 34 must be attained or the Architect will be rated as not qualified, which will disqualify the Design Build

Entity. A score at or above the minimum will be combined with the scores of the other parts of the Prequalification Questionnaire to determine the Total Score for the Design Build Entity.

Subpart III.C: Scored Questions for the Sub-Consultants

Subpart III.C applies to each required core Sub-Consultant. It consists of a series of questions that must be answered for each core Sub-Consultant, each of which has an established numerical score for potential answers (as shown in the sample Scoring Worksheet provided herein). The total score attained establishes the rating for each required core Sub-Consultant.

There is a maximum possible score of 39 for each sub-consultant in this subpart. A minimum score of 30 must be attained or the Sub-Consultant will be rated as not qualified. Disqualification of a core Sub-Consultant will not disqualify the Design Build Entity but will require the Design Build Entity to make a qualifying core Sub-Consultant substitution in accordance with the Review and Notification Process listed in the Notice of Prequalification requirement above. A score at or above the minimum will be combined with the scores of the other parts of the Prequalification Questionnaire to determine the Total Score for the Design Build Entity.

Subpart III.D: Scored Questions for the Sub-Contractors

Subpart III.D applies to each Sub-Contractor. It consists of a series of questions that must be answered for each core Sub-Contractor, each of which has an established numerical score for potential answers (as shown in the Scoring Worksheet provided herein). The total score attained establishes the rating for each required core Sub-Contractor Member.

There is a maximum possible score of 56 for each sub-consultant in this subpart. A minimum score of 42 must be attained or the Sub-Contractor will be rated as not qualified. Disqualification of a core Sub-Contractor will not disqualify the Design Build Entity but will require the Design Build Entity to make a qualifying core Sub-Contractor substitution in accordance with the Review and Notification Process listed in the Notice of Prequalification requirement above. A score at or above the minimum will be combined with the scores of the other parts of the Prequalification Questionnaire to determine the Total Score for the Design Build Entity.

PART IV: CONSTRUCTION EXPERIENCE

To help the County assess to what extent the Design Build Entity and its members have completed, or have demonstrated the experience, competency, capability, and capacity to complete projects of similar size, scope, or complexity to the Project, Part IV requires the Design Build Entity to submit information on recently completed comparable projects designed and constructed by the DBE, its General Contractor, and its Architect.

This part includes pass/fail criteria for the projects submitted. Failure to provide reference information for projects sufficient to meet these criteria will result in the disqualification of the Design Build Entity.

In addition, the County will select at least two (2) projects, (1) Design Build general Contractor and (1) Design Build Architect, from the total list of reference projects submitted and conduct interviews of owner representatives using the scored Reference Interview Questions provided herein. Each “scored” question has a possible value ranging from 1 to 10. The aggregate score for all reference interview questions must be equal to or greater than 50% of the possible 270 points. A combined minimum score of 135 must be attained or the Design Build General Contractor or Design Build Architect will be rated as not qualified, which will disqualify the Design Build Entity.

PART V: KEY PERSONNEL

To help the County assess to what extent Design Build Entity personnel have sufficient experience and training to competently manage and complete the design and construction of the Project, Part V requires the Design Build Entity to submit information regarding key personnel.

PART VI: CERTIFICATION

Part VI requires certification under penalty of perjury by the Design Build Entity and its members. Failure to certify a Prequalification Questionnaire will result in the disqualification of the Design Build Entity.

Instructions for Submission

INSTRUCTIONS FOR REQUEST FOR QUALIFICATION SUBMISSION

Each Qualifications Questionnaire must be signed under penalty of perjury in the manner designated on the Certification page (Part VI), by an individual who has the legal authority to bind the Design Build Entity on whose behalf that person is signing.

If any information provided by a Design Build Entity becomes inaccurate, the Design Build Entity must immediately notify the County and provide updated accurate information in writing, under penalty of perjury.

Requested information must be provided on the Qualification Questionnaire form provided herein. To the extent that additional space is required to fully and completely answer any question you should note in the Questionnaire space provided that additional information is being submitted. Submit such information on the company letterhead of the firm submitting the Questionnaire with reference to: (a) the Project (by name and project number), (b) the relevant subpart and question, and (c) the Questionnaire page number for which the information is being provided.

Qualification Questionnaires must be submitted in 3-ring binders with tabs indicating all subparts. Attachments and additional information must be placed behind the appropriate tabs for the subpart for which they required. The front of the binders must be marked “CONFIDENTIAL” and must indicate the Design Build Entity’s name and address using the following format:

Design Build Entity – Request for Qualifications Submittal
Company Name and Address: _____
Project Name: **Alameda County Fire Training Center**
Project No. **CAP21-ACFD-CNTR**
Due Date and Time: **July 28, 2023, at 3:00 PM**

In addition to the three-ring binder, an electronic copy of the completed, signed Prequalification Questionnaire with required attachments must be submitted in a sealed envelope marked “CONFIDENTIAL” and labeled as above.

A complete, timely submission must include:

- **1 fully completed, verified RFQ Questionnaire together with ALL required documents,**
- **5, printed hard copies of the same in three ring binders, and**
- **1 electronic, scanned copy of the same on a USB Flash drive.**

RFQ Questionnaires must be received at:

Patrick Lam, Sr. Project Manager
County of Alameda – General Services Agency
1401 Lakeside Drive, Suite 800
Oakland, CA 94612-4305
Tel (510) 208-9522
Email: patrick.lam@acgov.org

Due On: July 28, 2023, at 3:00 PM

Contractors shall assume full responsibility for timely delivery at the location designated for receipt of Prequalification Questionnaires. **ORAL, TELEPHONIC, FACSIMILE, TELEGRAPHIC, OR E-MAILED PREQUALIFICATION QUESTIONNAIRES ARE INVALID AND WILL NOT BE ACCEPTED. NO PREQUALIFICATION DOCUMENTS WILL BE ACCEPTED AFTER THE DUE DATE AND TIME** unless the County determines that it is in its best interest to reopen the prequalification process in a manner stated in the Prequalification Document.

Prequalification Questionnaire

PREQUALIFICATION QUESTIONNAIRE

County of Alameda
Fire Training Center Project
Project No. CAP21-ACFD-CNTR

PART I: INFORMATION ABOUT THE DESIGN-BUILD ENTITY, ITS MEMBERS, AND CORE ORGANIZATIONS

IA CONTACT INFORMATION

Design Build Entity _____
Contact: Person: _____
Address: _____
Phone: _____ Email _____

Type of Entity (check one):

☐ Corporation ☐ Partnership ☐ Sole Prop. ☐ Other Association

Member Firm(s) and Core Organizations		
Discipline	Name	CA License No.
General Contractor (GC)		
Architect		
Structural Engineer		
Mechanical/Plumbing Engineer		
Electrical Engineer		
Civil Engineer		
Fire Life/Safety		
GC Teaming Sub-contractors		
Mechanical Sub-contractor		
Electrical Sub-contractor		
Plumbing Sub-contractor		
Fire Life/Safety Sub-contractor		
Structural/Framing Sub-contractor		
Other (Optional)		

PUBLIC RECORD

I.B INFORMATION ABOUT THE DESIGN BUILD ENTITY

Entity Name: _____
Contact: Person: _____
Address: _____
Phone: _____ Email _____

Type of Entity (check one):

☐ Corporation ☐ Partnership ☐ Sole Prop. ☐ Other Association

- 1a. Date of entity incorporation, formation or commencement: _____
b. State of formation or incorporation: _____
c. How many people does your organization currently employ: _____
d. If the entity is a **corporation or LLC**, please complete the following table; provide information for each officer of the corporation or individual(s) with 10% or more of the corporate stock and those officers that hold stock and will perform services for the Project (22164(b)(3)):

Position	Name	Years with Co.	% Ownership
President			
Vice-President			
Secretary			
Treasurer			

- e. If the entity is a **partnership**, please complete the following table; provide information for each partner who owns 10% or more of the firm and those officers that hold stock and will perform services for the Project (Public Contract Code (PCC) section 22164(b)(3)):

Position	Name	Years with Co.	% Ownership
General Partner			

- f. If the entity is a **sole proprietorship**, please provide the name and social security number of the company owner:

Name	Social Security No. (last 4 Digits)

- g. If the entity is a **joint venture**, please complete the following table; provide information for each member of the joint venture and those officers that hold stock and will perform services for the Project (PCC section 22164(b)(3)):

Name of Firm	Name of Owner, General Partner, or President	% Ownership of Joint Venture

- h. For each person listed in table 1d, 1e, 1f, or 1g, identify every construction company that the person has been associated with (as owner, general partner, limited partner, or officer) at any time during the last five (5) years:

NOTE: For this question, “owner” and “partner” refer to ownership of 10% or more of the business, or 10% or more of its stock, if the business is a corporation.

Name	Company	Position with Company	Dates of Employ.

2. Has there been any change in ownership of the Design Build Entity at any time during the last three (3) years?

NOTE: A corporation whose shares are publicly traded must only report a change in ownership of a controlling block of shares.

☐ Yes ☐ No

If “yes,” explain:

3. Is the Design Build Entity a subsidiary, parent, holding company or affiliate of another design or construction firm?

NOTE: Include information about other firms if one firm owns 50% or more of another, or if an owner, partner, or officer of your firm holds a similar position in another firm.

☐ Yes ☐ No

If “yes,” explain:

4. Are any of the Design Build Entity’s corporate officers, partners or owners associated with any other design or construction companies?

NOTE: Include name, address, and position information about each other firm in which an owner, partner, or officer of your firm holds a similar position.

☐ Yes ☐ No

If “yes,” explain:

5. To the extent available, state the Design Build Entity’s gross revenues for each of the last

2017:	_____	2018:	_____	2019:	_____
2020:	_____	2021:	_____	2022:	_____

6. Based on the financial statement required in Part II.A, provide the following information about the Design Build Entity:

Current Assets: \$ _____
Current Liabilities: \$ _____
Total Net Worth: \$ _____
Current Asset/Liability Ratio: \$ _____
Working Capital
(Current Assets – Current Liabilities) \$ _____

7. Has the Design Build Entity changed its name or license number in the past five (5) years?

☐ Yes ☐ No

If “yes,” explain:

8. Has any owner, partner, or (for corporations) officer of the Design Build Entity operated a design or construction company under any other name in the last five (5) years?

☐ Yes ☐ No

I.C INFORMATION ABOUT THE GENERAL CONTRACTOR

Entity Name: _____
Contact: Person: _____
Address: _____
Phone: _____ Email _____

Type of Entity (check one):

☐ Corporation ☐ Partnership ☐ Sole Prop. ☐ Other Association

- 1a. Date of entity incorporation, formation or commencement: _____
b. State of formation or incorporation: _____
c. How many people does your organization currently employ: _____
d. If the entity is a **corporation**, please complete the following table; provide information for each officer of the corporation or individual(s) with 10% or more of the corporate stock:

Position	Name	Years with Co.	% Ownership
President			
Vice-President			
Secretary			
Treasurer			

- e. If the entity is a **partnership**, please complete the following table; provide information for each partner who owns 10% or more of the firm:

Position	Name	Years with Co.	% Ownership
General Partner			

- | | |
|-------------|--|
| Name | Social Security No. (last 4 digits) |
| | |

- | Name of Firm | Name of Owner, General Partner, or President | % Ownership of Joint Venture |
|--------------|--|------------------------------|
| | | |
| | | |
| | | |
| | | |

- NOTE: For this question, “owner” and “partner” refer to ownership of 10% or more of the business, or 10% or more of its stock, if the business is a corporation.**

[illegible]

2. Has there been any change in ownership of the General Contractor at any time during the last three (3) years?

NOTE: A corporation whose shares are publicly traded must only report a change in ownership of a controlling block of shares.

☐ Yes ☐ No

If “yes,” explain:

3. Is the General Contractor a subsidiary, parent, holding company or affiliate of another design or construction firm?

NOTE: Include information about other firms if one firm owns 50% or more of another, or if an owner, partner, or officer of your firm holds a similar position in another firm.

☐ Yes ☐ No

If “yes,” explain:

4. Are any of the General Contractor’s corporate officers, partners or owners associated with any other design or construction companies?

NOTE: Include name, address, and position information about each other firm in which an owner, partner, or officer of your firm holds a similar position.

☐ Yes ☐ No

If “yes,” explain:

5. State the General Contractor’s gross revenues for each of the last six years:

2017:	_____	2018:	_____	2019:	_____
2020:	_____	2021:	_____	2022:	_____

6. Based on the financial statement required in Part II.B, provide the following information about the General Contractor:

Current Assets: \$ _____
Current Liabilities: \$ _____
Total Net Worth: \$ _____
Current Asset/Liability Ratio: \$ _____
Working Capital
(Current Assets – Current Liabilities) \$ _____

7. List all California construction license numbers, classifications and expiration dates of the California contractor licenses held by the General Contractor:

☐ Yes ☐ No

Contractor License Number	Classification(s)	Expiration Date

8. If any of the General Contractor's license(s) are held in the name of a corporation, partnership, or other entity, list below the names of the qualifying individuals(s) listed on the CSLB records who meet(s) the experience and examination requirements for each license.

Contractor License Number	Name of Qualifying Individual

9. Has the General Contractor changed its name or license number in the past five (5) years?

☐ Yes ☐ No

If "yes," explain:

10. Has any owner, partner, or (for corporations) officer of the General Contractor operated a design or construction company under any other name in the last five (5) years?

☐ Yes ☐ No

If “yes,” explain:

11. Provide documentation from the General Contractor’s surety identifying the following:

Bonding Co./Surety:		Surety Agent:	
Agent Address:		Telephone #:	

12. List all other sureties (by name and with full address) that have written payment or performance bonds for the General Contractor during the last five (5) years, including the dates during which each wrote the bonds:

Date	Surety	Address

I.D INFORMATION ABOUT THE ARCHITECT

Entity Name: _____
Contact: Person: _____
Address: _____
Phone: _____ Email _____

Type of Entity (check one):

☐ Corporation ☐ Partnership ☐ Sole Prop. ☐ Other Association

- 1a. Date of entity incorporation, formation or commencement: _____
b. State of formation or incorporation: _____
c. How many people does your organization currently employ: _____
d. If the entity is a **corporation**, please complete the following table; provide information for each officer of the corporation or individual(s) with 10% or more of the corporate stock:

Position	Name	Years with Co.	% Ownership
President			
Vice-President			
Secretary			
Treasurer			

- e. If the entity is a **partnership**, please complete the following table; provide information for each partner who owns 10% or more of the firm:

Position	Name	Years with Co.	% Ownership
General Partner			

- | | |
|-------------|--|
| Name | Social Security No. (last 4 digits) |
| | |

- | Name of Firm | Name of Owner, General Partner, or President | % Ownership of Joint Venture |
|--------------|--|------------------------------|
| | | |
| | | |
| | | |
| | | |

- NOTE: For this question, “owner” and “partner” refer to ownership of 10% or more of the business, or 10% or more of its stock, if the business is a corporation.**

[illegible]

2. Has there been any change in ownership of the Architect at any time during the last three years?

NOTE: A corporation whose shares are publicly traded must only report a change in ownership of a controlling block of shares.

☐ Yes ☐ No

If “yes,” explain:

3. Is the Architect a subsidiary, parent, holding company or affiliate of another design or construction firm?

NOTE: Include information about other firms if one firm owns 50% or more of another, or if an owner, partner, or officer of your firm holds a similar position in another firm.

☐ Yes ☐ No

If “yes,” explain:

4. Are any of the Architect’s corporate officers, partners or owners associated with any other design or construction companies?

NOTE: Include name, address, and position information about each other firm in which an owner, partner, or officer of your firm holds a similar position.

☐ Yes ☐ No

If “yes,” explain:

5. State the Architect's gross revenues for each of the last six years:

2017: _____ **2018:** _____ **2019:** _____
2020: _____ **2021:** _____ **2022:** _____

6. Based on the financial statement required in Part II.C, provide the following information about the Architect:

Current Assets: \$ _____
Current Liabilities: \$ _____
Total Net Worth: \$ _____
Current Asset/Liability Ratio: \$ _____
Working Capital
(Current Assets – Current Liabilities) \$ _____

7. Has the Architect changed its name or license number in the past five (5) years?

☐ Yes ☐ No

If "yes," explain:

8. Has any owner, partner, or (for corporations) officer of the Architect operated a design or construction company under any other name in the last five (5) years?

☐ Yes ☐ No

If "yes," explain:

9. Provide the following information for the Architect of Record (i.e., the architect whose stamp will appear on the Project documents) for the Project:

Name	CA License Number	Years Licensed

10. Provide the following information for all known architects who will be designing the Project:

Name	CA License Number	Years Licensed

I.E INFORMATION ABOUT CORE SUB-CONSULTANTS

For each required Core Sub-Consultant, provide the following information:

Entity Name: _____
Contact: Person: _____
Address: _____
Phone: _____ Email _____

Type of Entity (check one):

☐ Corporation ☐ Partnership ☐ Sole Prop. ☐ Other Association

- 1a. Date of entity incorporation, formation or commencement: _____
b. State of formation or incorporation: _____
c. How many people does your organization currently employ: _____
d. If the entity is a **corporation**, please complete the following table; provide information for each officer of the corporation or individual(s) with 10% or more of the corporate stock:

Position	Name	Years with Co.	% Ownership
President			
Vice-President			
Secretary			
Treasurer			

- e. If the entity is a **partnership**, please complete the following table; provide information for each partner who owns 10% or more of the firm:

Position	Name	Years with Co.	% Ownership
General Partner			

- | | |
|-------------|--|
| Name | Social Security No. (last 4 digits) |
| | |

- | Name of Firm | Name of Owner, General Partner, or President | % Ownership of Joint Venture |
|--------------|--|------------------------------|
| | | |
| | | |
| | | |
| | | |

- NOTE: For this question, “owner” and “partner” refer to ownership of 10% or more of the business, or 10% or more of its stock, if the business is a corporation.**

[illegible]

2. Has there been any change in ownership of the Sub-Consultant at any time during the last three (3) years?

NOTE: A corporation whose shares are publicly traded must only report a change in ownership of a controlling block of shares.

☐ Yes ☐ No

If “yes,” explain:

3. Is the Sub-Consultant a subsidiary, parent, holding company or affiliate of another design or construction firm?

NOTE: Include information about other firms if one firm owns 50% or more of another, or if an owner, partner, or officer of your firm holds a similar position in another firm.

☐ Yes ☐ No

If “yes,” explain:

4. Are any of the Sub-Consultant’s corporate officers, partners or owners associated with any other design or construction companies?

NOTE: Include name, address, and position information about each other firm in which an owner, partner, or officer of your firm holds a similar position.

☐ Yes ☐ No

If “yes,” explain:

5. State the Sub-Consultant’s gross revenues for each of the last six years:

2017:	_____	2018:	_____	2019:	_____
2020:	_____	2021:	_____	2022:	_____

6. Based on the financial statement required in Part II.C, provide the following information about the Sub-Consultant:

Current Assets: \$ _____
Current Liabilities: \$ _____
Total Net Worth: \$ _____
Current Asset/Liability Ratio: \$ _____
Working Capital
(Current Assets – Current Liabilities) \$ _____

7. Has the Sub-Consultant changed its name or license number in the past five (5) years?

☐ Yes ☐ No

If “yes,” explain:

8. Has any owner, partner, or (for corporations) officer of the Sub-Consultant operated a design or construction company under any other name in the last five (5) years?

☐ Yes ☐ No

If “yes,” explain:

9. Provide the following information for the Sub-Consultant’s principal engineer:

Note: For the Structural Engineering Sub-Consultant, list information for the Engineer of Record (i.e., the engineer whose stamp will appear on the Project documents).

Name	CA License Number	Years Licensed

10. Provide the following information for all known designers who will be providing services for the Project:

Prequalification Document

County of Alameda
Fire Training Center – CAP21-ACFD-CNTR

I.F INFORMATION ABOUT CORE SUB-CONTRACTORS

For each required Core Sub-Contractor, provide the following information:

Entity Name: _____
Contact: Person: _____
Address: _____
Phone: _____ Email: _____

Type of Entity (check one):

☐ Corporation ☐ Partnership ☐ Sole Prop. ☐ Other Association

- 1a. Date of entity incorporation, formation or commencement: _____
b. State of formation or incorporation: _____
c. How many people does your organization currently employ: _____
d. If the entity is a **corporation**, please complete the following table; provide information for each officer of the corporation or individual(s) with 10% or more of the corporate stock:

Position	Name	Years with Co.	% Ownership
President			
Vice-President			
Secretary			
Treasurer			

- e. If the entity is a **partnership**, please complete the following table; provide information for each partner who owns 10% or more of the firm:

Position	Name	Years with Co.	% Ownership
General Partner			

- | Name | Social Security No.
(Last 4 digits) |
|------|--|
| | |

- | Name of Firm | Name of Owner, General Partner, or President | % Ownership of Joint Venture |
|--------------|--|------------------------------|
| | | |
| | | |
| | | |
| | | |

- NOTE: For this question, “owner” and “partner” refer to ownership of 10% or more of the business, or 10% or more of its stock, if the business is a corporation.**

[illegible]

2. Has there been any change in ownership of the Sub-Contractor at any time during the last three (3) years?

NOTE: A corporation whose shares are publicly traded must only report a change in ownership of a controlling block of shares.

☐ Yes ☐ No

If “yes,” explain:

3. Is the Sub-Contractor a subsidiary, parent, holding company or affiliate of another design or construction firm?

NOTE: Include information about other firms if one firm owns 50% or more of another, or if an owner, partner, or officer of your firm holds a similar position in another firm.

☐ Yes ☐ No

If “yes,” explain:

4. Are any of the Sub-Contractor’s corporate officers, partners or owners associated with any other design or construction companies?

NOTE: Include name, address, and position information about each other firm in which an owner, partner, or officer of your firm holds a similar position.

☐ Yes ☐ No

If “yes,” explain:

5. State the Sub-Contractor’s gross revenues for each of the last six years:

2017: _____ **2018:** _____ **2019:** _____
2020: _____ **2021:** _____ **2022:** _____

6. Based on the financial statement required in Part II.B, provide the following information about the Sub-Contractor:

Current Assets: \$ _____
Current Liabilities: \$ _____
Total Net Worth: \$ _____
Current Asset/Liability Ratio: \$ _____
Working Capital
(Current Assets – Current Liabilities) \$ _____

7. List all California construction license numbers, classifications and expiration dates of the California contractor licenses held by the Sub-Contractor:

☐ Yes ☐ No

Contractor License Number	Classification(s)	Expiration Date

8. If any of the Sub-Contractor's license(s) are held in the name of a corporation, partnership, or other entity, list below the names of the qualifying individuals(s) listed on the CSLB records who meet(s) the experience and examination requirements for each license.

Contractor License Number	Name of Qualifying Individual

9. Has the Sub-Contractor changed its name or license number in the past five (5) years?

☐ Yes ☐ No

If “yes,” explain:

10. Has any owner, partner, or (for corporations) officer of the Sub-Contractor operated a design or construction company under any other name in the last five (5) years?

☐ Yes ☐ No

If “yes,” explain:

PART II: ESSENTIAL REQUIREMENTS FOR THE DESIGN-BUILD ENTITY AS A WHOLE

II.A ESSENTIAL REQUIREMENTS FOR THE DESIGN BUILD ENTITY AS A WHOLE

NOTE: Design Build Entity will be automatically disqualified if the answer to questions 1 or 2 is “No.”

1. If the Design Build Entity is a joint-venture or partnership, has the Design Build Entity attached a copy of the agreement creating the entity and which specifies that all partners or association members agree to be fully liable for the performance under the design-build contract?

NOTE: A corporation or sole proprietorship is not required to answer this question.

☐ Yes ☐ No

2. Has the Design Build Entity attached a copy of it most **current** reviewed or audited financial statement with accompanying notes and supplemental information, as well as reviewed or audited financial statements with accompanying notes and supplemental information for the **past year** (if available)? At least **one** such statement for the Design Build entity must be attached.

☐ Yes ☐ No

A financial statement that is not either reviewed or audited is not acceptable. A letter verifying availability of a line of credit is not a substitute for the required financial statement.

NOTE: Design Build Entity will be automatically disqualified if the answer to any of questions 3 through 9 is “Yes.”

3. Has the Design Build Entity ever defaulted on a construction contract?

☐ Yes ☐ No

4. Within the last five (5) years, has a surety firm completed a contract on behalf of the Design Build Entity or any of its members, or paid for completion because the Design Build Entity or one of its members was default terminated by the project owner?

☐ Yes ☐ No

5. At the time of submitting this Prequalification Questionnaire, is the Design Build Entity or any of its members ineligible to bid on or be awarded a public works contract, or perform as a sub-contractor on a public works contract, pursuant to either Labor Code section 1777.1 or Labor Code section 1777.7?
- ☐ Yes ☐ No
6. At any time during the last five (5) years, has the Design Build Entity or any of its members been convicted of a crime involving the awarding of a contract of a government construction project, or the bidding or performance of a government contract?
- ☐ Yes ☐ No
7. Has the Design Build Entity or any of its members, any of their owners or officers ever been found liable in a civil suit or found guilty in a criminal action for making any false claim or material misrepresentation to any public agency or entity?
- ☐ Yes ☐ No
8. Has the Design Build Entity or any of its members, any of their owners or officers ever been convicted of a crime involving any federal, state, or local law related to construction?
- ☐ Yes ☐ No
9. Has the Design Build Entity or any of its members, any of their owners or officers ever been convicted of a federal or state crime of fraud, theft, or any other act of dishonesty?
- ☐ Yes ☐ No

II.B ESSENTIAL REQUIREMENTS FOR THE GENERAL CONTRACTOR AND CORE SUB-CONTRACTORS

NOTE: Design Build Entity will be automatically disqualified if the answer to any of questions 10 through 14 is “No.”

10. Do the General Contractor and each proposed Sub-Contractor possess a valid, current California contractor’s license for the Project services for which it intends to submit a proposal?

For this Project, the General Contractor must have a current and active California State Contractor’s license with a “B” General Building Contractor classification.

☐ Yes ☐ No

11. Does the General Contractor have a liability insurance policy with a policy limit of at least \$3,000,000 per occurrence and \$4,000,000 aggregate?

☐ Yes ☐ No

12. Do the General Contractor and each proposed Sub-Contractor have current workers’ compensation insurance policies as required by the Labor Code or legal self-insurance pursuant to Labor Code section 3700 et seq.?

☐ Yes ☐ No

13. Has the General Contractor attached a copy of its most **current** reviewed or audited financial statement with accompanying notes and supplemental information, as well as reviewed or audited financial statements with accompanying notes and supplemental information for the **past year**? The County reserves the right to request sub-contractor reviewed or audited financial statements at a later date.

☐ Yes ☐ No

A financial statement that is not either reviewed or audited is not acceptable. A letter verifying availability of a line of credit is not a substitute for the required financial statement.

14. Has the General Contractor attached a notarized statement from a surety insurer admitted and authorized to issue bonds in the State of California (i.e., approved by the California Department of Insurance), which states that the General Contractor’s current payment and performance bonding capacity is sufficient for the Project?

NOTE: Required minimum performance and payment bonding capacity for the Project is equal to the estimated Project construction cost.

☐ Yes ☐ No

Notarized statement must be from the surety company, not an agent or broker.

NOTE: Design Build Entity will be automatically disqualified if the answer to any of questions 15 through 21 is “Yes.”

15. At any time during the last five (5) years, has any Contractor State Licensing Board license of the General Contractor or any of the proposed Sub-Contractors (or the responsible managing officer/employee thereof) been revoked or suspended?
- ☐ Yes ☐ No
16. Within the last five (5) years, has a surety firm completed a contract on behalf of the General Contractor or any of the proposed Sub-Contractors, or paid for completion because the Contractor or Sub-Contractor was default terminated by the project owner?
- ☐ Yes ☐ No
17. At the time of submitting this Prequalification Questionnaire, is the General Contractor or any of the proposed Sub-contractors ineligible to bid on or be awarded a public works contract, or perform as a sub-contractor on a public works contract, pursuant to either Labor Code section 1777.1 or Labor Code section 1777.7?
- ☐ Yes ☐ No
18. At any time during the last five (5) years, has the General Contractor, any of its owners or officers, or any of the proposed Sub-Contractors, or their owners or officers, been convicted of a crime involving the awarding of a contract of a government construction project, or the bidding or performance of a government contract?
- ☐ Yes ☐ No
19. Has the General Contractor, any of its owners or officers, or any of the proposed Sub-Contractors, or their owners or officers, ever been found liable in a civil suit or found guilty in a criminal action for making any false claim or material misrepresentation to any public agency or entity?
- ☐ Yes ☐ No
20. Has the General Contractor, any of its owners or officers, or any of the proposed Sub-Contractors, or their owners or officers, ever been convicted of a crime involving any federal, state, or local law related to construction?
- ☐ Yes ☐ No
21. Has the General Contractor, any of its owners or officers, or any of the proposed Sub-Contractors, or their owners or officers, ever been convicted of a federal or state crime of fraud, theft, or any other act of dishonesty?
- ☐ Yes ☐ No

II.C ESSENTIAL REQUIREMENTS FOR THE ARCHITECT AND CORE SUB-CONSULTANTS

NOTE: Design Build Entity will be automatically disqualified if the answer to any of questions 22 through 25 is “No.”

22. Do all architects and Sub-Consultant designers possess valid and current professional licenses for the services for which they intend to provide on the Project?
- ☐ Yes ☐ No
23. Does the Architect have, or can the Architect obtain, a professional liability insurance policy with a policy limit of at least \$1,000,000 per occurrence and \$2,000,000 aggregate?
- ☐ Yes ☐ No
24. Do the Architect and each proposed Sub-Consultant have current workers' compensation insurance policy as required by the Labor Code or is legally self-insured pursuant to Labor Code section 3700 et seq.?
- ☐ Yes ☐ No
25. Has the Architect and each proposed Sub-Consultant attached a copy of its most current compiled, reviewed, or audited financial statement with accompanying notes and supplemental information, as well as reviewed or audited financial statements with accompanying notes and supplemental information for the past year?
- ☐ Yes ☐ No

A financial statement that is not either compiled, reviewed, or audited is not acceptable. A letter verifying availability of a line of credit is not a substitute for the required financial statement.

NOTE: Design Build Entity will be automatically disqualified if the answer to any of questions 26 through 30 is “Yes.”

26. Has any professional license, credential, or registration of any Design Build Entity architect or sub-consultant designer been revoked or suspended at any time in the last five (5) years?
- ☐ Yes ☐ No
27. At any time during the last five (5) years, has the Architect, a Sub-Consultant, or any owner or officer of either been convicted of a crime involving the awarding of a contract of a government construction project, or performance of a government contract?
- ☐ Yes ☐ No

28. Has the Architect, a Sub-Consultant, or any of its owners, officers, or partners ever been found liable in a civil suit or found guilty in a criminal action for making any false claim or material misrepresentation to any public agency or entity?
- ☐ Yes ☐ No
29. Has the Architect, a Sub-Consultant, or any of its owners, officers, or partners ever been convicted of a crime involving any federal, state, or local law related to construction?
- ☐ Yes ☐ No
30. Has the Architect, a Sub-Consultant, or any of its owners, officers, or partners ever been convicted of a federal or state crime of fraud, theft, or any other act of dishonesty?
- ☐ Yes ☐ No

PART III: SCORED QUESTIONS FOR MEMBERS OF THE DESIGN BUILD ENTITY AND CORE ORGANIZATIONS

III.A SCORED QUESTIONS FOR THE GENERAL CONTRACTOR

The term “associates” shall mean all of the following:

- The current qualifiers for all current Contractors State License Board contracting licenses held by the contractor.
- All current officers of a contractor which is a corporation.
- All current partners of a contractor which is a partnership.
- All current joint ventures of the joint venture contractor which is seeking prequalification.

Experience & Organizational Performance

1. How many years has the General Contractor been in business in California as a General Contractor under its present business name and license number?

NOTE: If the General Contractor is a joint-venture, enter the average of the qualifying years for each partner to the joint-venture.

Years: _____

2. How many fire training centers or fire stations **in California** with a total construction cost of \$24 million or more has the General Contractor or its associates completed in the last eight (8) years?

No. of completed Fire Training Centers and/or Fire Stations:

List the following information for the (up to five) most recent of these projects:

Project Name / Building Type	Location	Construction Cost

3. Does the General Contractor currently employ LEED (Leadership in Energy & Environmental Design) Accredited Professionals?

☐ Yes ☐ No

If yes, identify such individuals who will be involved in the Project:

Name	License Number	Years Licensed

4. Has the General Contractor constructed a facility where a California County was the authority having jurisdiction?

☐ Yes ☐ No

If yes, identify the specific projects the General Contractor has completed where the California County was the authority having jurisdiction (AHJ):

Project	Location (city, state)	Certification Level	Date Certified

5. Are the General Contractor or its associates currently the debtor in a bankruptcy case?

☐ Yes ☐ No

If “yes,” indicate the case number, and the date on which the petition was filed.

Case #: _____ Date filed: _____

6. Were the General Contractor or its associates in bankruptcy at any time during the last five years? (This question refers only to a bankruptcy action that was not described in answer to question 3, above)

☐ Yes ☐ No

If “yes,” indicate the case number and the date on which the petition was filed, and the Bankruptcy Court’s discharge order number.

Case #: _____ Date filed: _____ Discharge #: _____

Licensing

7. In the past five years, have the General Contractor or its associates been cited for violations of the Contractor’s State License Law (Chapter 9 (commencing with section 7000) of Division 3 of the Business and Professions Code), *excluding* alleged violations of federal or state law including the payment of wages, benefits, apprenticeship requirements, or personal income tax withholding?

NOTE: If the General Contractor or its associates have filed an appeal of a citation that has not yet been ruled on, it need not include information about that claim.

☐ Yes ☐ No

If “yes,” describe the nature of each violation, identify the name of the project, the date of its completion, the owner for which it was constructed, and give a brief explanation.

Violation:		Project:	
Completion:		Owner:	
Explanation:			

Violation:		Project:	
Completion:		Owner:	

Explanation:

Violation:		Project:	
Completion:		Owner:	
Explanation:			

Violation:		Project:	
Completion:		Owner:	
Explanation:			

Claims & Disputes

8. At any time in the last five years has the General Contractor or its associates been assessed and paid liquidated damages of more than \$50,000 after completion of a project under a construction contract with either a public or private owner?

☐ Yes ☐ No

If yes, identify all such projects by owner, owner's address, completion date of the project, amount of liquidated damages assessed and all other information necessary to fully explain the assessment of liquidated damages:

Owner:		Address:	
Completed:		Amount:	
Other:			

9. Have the General Contractor or its associates, or any firm with which any of the General Contractor's owners, officers or partners was associated, ever defaulted on a construction contract?

NOTE: “Associated with” refers to another construction firm in which an owner, partner or officer of your firm held a similar position, and which is listed in response to question 3 or 4 of Part I.C of this form.

☐ Yes ☐ No

If “yes,” identify the company, the person within the General Contractor who was associated with that company, the year of the event, the owner of the project, the project and the basis for the default:

Company:		Person:	
Year		Owner:	
Project:			
Basis:			

Company:		Person:	
Year:		Owner:	
Project:			
Basis:			

Company:		Person:	
Year:		Owner:	
Project:			
Basis:			

10. In the last five years, have the General Contractor or its associates, or any firm with which any of the General Contractor’s owners, officers or partners was associated, been debarred, disqualified, removed or otherwise prevented from bidding on, or completing, any government agency or public works project for any reason?

NOTE: “Associated with” refers to another construction firm in which an owner, partner or officer of your firm held a similar position, and which is listed in response to question 3 or 4 of Part I.B of this form.

☐ Yes ☐ No

If “yes,” identify the company, the person within the General Contractor who was associated with that company, the year of the event, the owner of the project, the project and the basis for the action:

Company:		Person:	
Year:		Owner:	
Project:			
Basis:			

Company:		Person:	
Year:		Owner:	
Project:			
Basis:			

Company:		Person:	
Year:		Owner:	
Project:			
Basis:			

11. Have the General Contractor or its associates, or any firm with which any of the General Contractor’s owners, officers or partners was associated ever been denied an award of a public works contract based on a finding by a public agency that your company was not a responsible bidder?

NOTE: “Associated with” refers to another construction firm in which an owner, partner or officer of your firm held a similar position, and which is listed in response to question 3 or 4 of Part I.B of this form.

☐ Yes

☐ No

If “yes,” identify the year of the event, the owner, the project and the basis for the finding by the public agency.

Year:		Owner:		Project:	
Basis:					

Year:		Owner:		Project:	
Basis:					

Year:		Owner:		Project:	
Basis:					

NOTE: The following two questions refer only to disputes between the General Contractor or its associates and the owner of a project. You need not include information about disputes between the General Contractor and a supplier, another contractor, or sub-contractor. You need not include information about “pass-through” disputes in which the actual dispute is between a sub-contractor and a project owner.

12. In the past five years has any claim in excess of \$50,000 been made against the General Contractor or its associates arising from or related to a design or construction contract (including claims for violation of the Federal or California False Claims Act) that was not resolved by change order or contract amendment?

☐ Yes

☐ No

If “yes,” identify the claim(s) by providing the project name, date of the claim, name of the claimant, a brief description of the nature of the claim, the court in which the case was filed (if applicable) and a brief description of the status of the claim (pending or, if resolved, a brief description of the resolution).

Project:		Date:	
Claimant:		Court:	
Nature:			
Description:			

Project:		Date:	
Claimant:		Court:	
Nature:			
Description:			

Project:		Date:	
Claimant:		Court:	
Nature:			

Description:

13. In the past five years have the General Contractor or its associates made any claim in excess of \$50,000 against a project owner arising from or related to a design or construction contract that was not resolved by change order or contract amendment?

☐ Yes ☐ No

If “yes,” identify the claim by providing the project name, date of the claim, name of the entity (or entities) against whom the claim was filed, a brief description of the nature of the claim, the court in which the case was filed and a brief description of the status of the claim (pending, or if resolved, a brief description of the resolution).

Project:		Date:	
Entity:		Defendant:	
Description:			

Project:		Date:	
Entity:		Defendant:	
Description:			

Project:		Date:	
Entity:		Defendant:	
Description:			

14. In the last five years has any insurance carrier, for any form of insurance, refused to renew the insurance policy for the General Contractor or its associates?

☐ Yes ☐ No

If “yes,” give name the insurance carrier, the form of insurance and the year of the refusal.

Year:		Carrier:		Form:	
Comments:					

Year:		Carrier:		Form:	
Comments:					

Year:		Carrier:		Form:	
Comments:					

15. Have the General Contractor or its associates been required to pay a premium of more than one per cent (1%) for a performance and payment bond on any project(s) on which the General Contractor or its associates worked at any time during the last five years?

☐ Yes ☐ No

If “yes,” state the percentage that your firm was required to pay; you may provide an explanation for a percentage rate higher than one per cent, if you wish to do so:

NOTE: Score will be based on the highest single year.

Year:		Rate:	
Explanation:			

Year:		Rate:	
Explanation:			

Year:		Rate:	
Explanation:			

16. During the last five (5) years, have General Contractor or its associates been denied payment or performance bond coverage by a surety company, or has there ever been a period of time when General Contractor or its associates had no surety bond in place during a public construction project when one was required?

☐ Yes ☐ No

If yes, indicate the date when General Contractor or its associates were denied coverage and the name of the company or companies that denied coverage; and the period during which you had no surety bond in place.

Date:		Surety:		Duration Period:	
Explanation:					

Date:		Surety:		Duration Period:	
Explanation:					

Date:		Surety:		Duration Period:	
Explanation:					

Date:		Surety:		Duration Period:	
Explanation:					

Regulatory Compliance

17. Has CAL OSHA cited and assessed penalties against the General Contractor or its associates for any “serious,” “willful” or “repeat” violations of its safety or health regulations in the past five (5) years?

NOTE: If the General Contractor or its associates have filed an appeal of a citation that has not yet been ruled on, it need not include information about that claim.

☐ Yes ☐ No

If “yes,” describe the citations, including information about the dates of the citations, the nature of the violation, the project on which the citation(s) was or were issued, the amount of penalty paid, if any. If the citation was appealed to the Occupational Safety and Health Appeals Board and a decision has been issued, state the case number and the date of the decision:

Description:		Date:		Nature:	
Project:		Amount:			
Description:		Date:		Nature:	
Project:		Amount:			
Description:		Date:		Nature:	
Project:		Amount:			

18. In the past five years, has the federal Occupational Safety and Health Administration cited and assessed penalties against the General Contractor or its associates?

NOTE: If the General Contractor or its associates have filed an appeal of a citation that has not yet been ruled on, it need not include information about that claim.

☐ Yes ☐ No

If “yes,” describe each citation.

Explanation:

19. In the past five (5) years, has the EPA or any Air Quality Management District or any Regional Water Quality Control Board cited and assessed penalties against either the General Contractor or its associates, or the owner of a project on which the General Contractor was part of the Design Build Entity, in the past five (5) years?

NOTE: If the General Contractor or its associates have filed an appeal of a citation that has not yet been ruled on, it need not include information about that claim.

☐ Yes ☐ No

If "yes," describe each citation:

Explanation:

Explanation:

Explanation:

20. In the past five (5) years, have the General Contractor or its associates been cited for violations of the Federal Insurance Contributions Act (FICA; 26 U.S.C. Sec. 3101 *et seq.*) withholding requirements?

NOTE: If the General Contractor or its associates have filed an appeal of a citation that has not yet been ruled on, it need not include information about that claim.

☐ Yes ☐ No

If "yes," describe the nature of each violation, identify the name of the project, the date of its completion, the owner for which it was constructed, and give a brief explanation.

Violation:		Project:	
Completion:		Owner:	
Explanation:			

Violation:		Project:	
Completion:		Owner:	
Explanation:			

Violation:		Project:	
Completion:		Owner:	
Explanation:			

Violation:		Project:	
Completion:		Owner:	
Explanation:			

21. Have the General Contractor or its associates been issued a California workers' compensation insurance Experience Modification Rate (EMR) for each of the past five (5) premium years?

☐ Yes ☐ No

If your EMR for any of these five (5) years is or was 1.00 or higher, provide an explanation.

NOTE: Score will be based on the highest EMR in any single year.

Current Year:		Rate:	
Explanation (if required):			

Current Year:		Rate:	
Explanation (if required):			

Current Year:		Rate:	
Explanation (if required):			

22. Within the last five (5) years, has there ever been a period when the General Contractor or its associates had employees but was without workers' compensation insurance or state-approved self-insurance?

☐ Yes ☐ No

If "yes," provide the following information, explaining the reason for the absence of workers' compensation insurance:

Year:		Period:	
Explanation:			

Year:		Period:	
Explanation:			

Prevailing Wage & Apprenticeship

23. Has there been more than one occasion during the last five (5) years in which the General Contractor or its associates were required to pay either back wages or penalties for the General Contractor's failure to comply with **California's** prevailing wage laws?

This question refers only to a violation of prevailing wage laws by the General Contractor or its associates, not to violations of the prevailing wage laws by a sub-contractor.

☐ Yes ☐ No

If "yes," describe the nature of each violation, identifying the name of the project, the date of its completion, the public agency for which it was constructed; the number of employees who were initially underpaid and the amount of back wages and penalties that you were required to pay.

Violation:			Project:		
Completion:		Agency:			
Employees:				Amount:	

Violation:			Project:		
Completion:		Agency:			
Employees:				Amount:	

Violation:			Project:		
Completion:		Agency:			
Employees:				Amount:	

24. During the last five (5) years, has there been more than one occasion in which the General Contractor or its associates have been penalized or required to pay back wages for failure to comply with the **Federal** Davis-Bacon prevailing wage requirements?

☐ Yes ☐ No

If “yes,” describe the nature of the violation, identifying the name of the project, the date of its completion, the public agency for which it was constructed; the number of employees who were initially underpaid, the amount of back wages you were required to pay along with the amount of any penalty paid.

Violation:			Project:		
Completion:		Agency:			
Employees:				Amount:	

Violation:			Project:		
Completion:		Agency:			
Employees:				Amount:	

Violation:			Project:		
Completion:		Agency:			
Employees:				Amount:	

Violation:			Project:		
Completion:		Agency:			
Employees:				Amount:	

25. Do the General contractor or its associates and each proposed sub-contractor know and understand their obligations regarding the employment of apprentices on public works under Labor Code section 1777.5 and California Code of Regulations, Title 8, Section 230.1?

☐ Yes ☐ No

26. Do the General Contractor or its associates intend to request the dispatch of apprentices from an apprenticeship program approved by the California Apprenticeship Council for use on the Project if its associated Design Build Entity is awarded the contract?

☐ Yes ☐ No

If “yes,” provide the name, address and telephone number of the apprenticeship program from whom General Contractor or its associates intend to request the dispatch of apprentices.

Program Name	Address	Phone

27. Have the General Contractor or its associates operated its own state-approved apprenticeship program during the last five (5) years?

☐ Yes ☐ No

If “yes,” state the year in which each such apprenticeship program was approved, identify the craft or crafts in which the General Contractor or its associates provided apprenticeship training, and state the number of individuals who were employed by the General Contractor or its associates as apprentices at any time during the past five (5) years in each apprenticeship and the number of persons who, during the past five (5) years, completed apprenticeships in each craft while employed by your firm.

Year:		Rate:	
Crafts:			

28. At any time during the last five (5) years, has the General Contractor or its associates been found to have violated any provision of California apprenticeship laws or regulations, or the laws pertaining to use of apprentices on public works?

You may omit reference to any incident that occurred prior to January 1, 2018, if the violation was by a sub-contractor and the General Contractor or its associates, as general contractor on a project, had no knowledge of the sub-contractor’s violation at the time they occurred.

☐ Yes ☐ No

If “yes,” provide the date(s) of such findings and attach copies of the Department’s final decision(s).

Date	Department	Finding	Decision #

Safety & Quality Control

29. Do the General Contractor and its associates require documented safety meetings to be held for construction employees and field supervisors during the course of a project?

☐ Yes ☐ No

If “yes,” identify how often the meetings are required.

Weekly

☐

Bi-Weekly

☐

Monthly

☐

Less Frequent

☐

30. Do General Contractor and its associates have a written Injury and Illness Prevention Program (IIPP) that complies with California Code of Regulations, Title 8 Sections 1509 and 3203?

☐ Yes ☐ No

31. Do General Contractor and its associates have personnel permanently assigned to safety?

☐ Yes ☐ No

If yes, state the names of all personnel who are assigned and list their specific duties:

Name: _____	Title: _____
Specific Duties:	

Name: _____	Title: _____
Specific Duties:	

32. Do the General Contractor and its associates have a substance abuse testing program?

☐ Yes ☐ No

If “yes,” identify the testing included.

Pre-Hire

☐

Random

☐

Probable Cause

☐

Post-Incident

☐

33. Do General Contractor and its associates have a written Quality Assurance/Quality Control (“QA/QC”) program?

☐ Yes ☐ No

34. Do General Contractor and its associates have personnel permanently assigned to QA/QC?

☐ Yes ☐ No

If yes, state the names of all personnel who are assigned and list their specific duties:

Name: _____	Title: _____
Specific Duties:	

Name: _____	Title: _____
Specific Duties:	

III.B SCORED QUESTIONS FOR THE ARCHITECT MEMBER

“Architect of Record” shall mean the architect whose stamp will appear on Project documents.

“Architect” shall mean the firm with employs the Architect of Record whether it is the General Contractor, a separate architectural firm, or other firm.

Experience & Organizational Performance

1. How many fire training centers or fire stations has the Architect designed and completed in the last five (5) years?

No. of completed Fire Training Centers or Fire Stations: _____

List the following information for the (up to five (5)) most recent of these projects:

Project Name	Location	Building Type

2. How many fire training centers or fire stations **in California** has the **Architect of Record** designed and completed in the last eight (8) years?

No. of completed fire training centers or fire stations: _____

List the following information for the (up to five (5)) most recent of these projects:

Project Name	Location	Construction Cost

3. How many years has the Architect been in business in California as an architect under its present business name and license number?

NOTE: If the Architect is a joint-venture, enter the average of the qualifying years for each partner to the joint-venture.

Years: _____

4. Does the Architect currently employ LEED (Leadership in Energy & Environmental Design) Accredited Professionals?

☐ Yes ☐ No

If yes, identify such individuals who will be involved in the Project:

Name	License Number	Years Licensed

5. Has the Architect constructed a facility where the County was the authority having jurisdiction?

☐ Yes ☐ No

If yes, identify the specific projects the Architect has completed where the County was the authority having jurisdiction (AHJ):

Project	Location (city, state)	Certification Level	Date Completed

6. Is the Architect currently the debtor in a bankruptcy case?

☐ Yes ☐ No

If “yes,” indicate the case number, and the date on which the petition was filed.

Case number: _____ **Date filed:** _____

7. Was any part of the Architect in bankruptcy at any time during the last five (5) years? (This question refers only to a bankruptcy action that was not described in answer to question 6, above)

☐ Yes ☐ No

If “yes,” indicate the case number and the date on which the petition was filed, and the Bankruptcy Court’s discharge order number.

Case number: _____ **Date filed:** _____ **Discharge #:** _____

Claims & Disputes

8. In the past ten (10) years has the Architect operated without professional liability insurance?

☐ Yes ☐ No

If “yes,” explain on a separate sheet.

9. In the past five (5) years has any claim in excess of \$50,000 been made against the Architect arising from or related to a design or construction contract (including claims for violation of the Federal or California False Claims Act) that was not resolved by change order or contract amendment?

☐ Yes ☐ No

If “yes,” identify the claim(s) by providing the project name, date of the claim, name of the claimant, a brief description of the nature of the claim, the court in which the case was filed and a brief description of the status of the claim (pending or, if resolved, a brief description of the resolution).

Project Name:				Date:	
Claimant:			Court:		
Nature:					
Description:					

10. In the past five (5) years has the Architect made any claim in excess of \$50,000 against a project owner arising from or related to a design or construction contract that was not resolved by change order or contract amendment?

☐ Yes ☐ No

If “yes,” identify the claim by providing the project name, date of the claim, name of the entity (or entities) against whom the claim was filed, a brief description of the nature of the claim, the court in which the case was filed and a brief description of the status of the claim (pending, or if resolved, a brief description of the resolution).

Project Name:		Date:	
Entity(s):		Court:	
Nature:			
Description:			

11. In the last five (5) years has any insurance carrier, for any form of insurance, refused to renew the insurance policy for the Architect?

☐ Yes ☐ No

If “yes” give name the insurance carrier, the form of insurance and the year of the refusal.

Year:		Carrier:		Form:	
Comments:					

Year:		Carrier:		Form:	
Comments:					

Year:		Carrier:		Form:	
Comments:					

III.C SCORED QUESTIONS FOR THE SUB-CONSULTANTS SUB-CONSULTANT MEMBERS

For each required Core Sub-Consultants, answer the following questions:

Experience & Organizational Performance

1. In the last five (5) years, how many fire training centers or fire stations has the Sub-Consultant provided engineering services on?

No. of completed fire training centers or fire stations: _____

List the following information for the (up to five (5)) most recent of these projects:

Project	Building Type	Owner	Total Constr. Cost

2. In the last eight (8) years, how many fire training centers or fire stations located in **California** has the Sub-Consultant's principal engineer provided engineering services on?

Note: For the Structural Engineering Sub-Consultant, list the number of projects completed by the Engineer of Record (i.e., the engineer whose stamp will appear on the Project documents).

No. of completed fire training centers or fire stations: _____

List the following information for the (up to five (5)) most recent of these projects:

Project	Building Type	Owner	Total Constr. Cost

3. How many years has the Sub-Consultant been in business in California under its present business name and license number?

Number of Years: _____

4. Is the Sub-Consultant currently a debtor in a bankruptcy case?

☐ Yes ☐ No

5. Was any part of the Sub-Consultant in bankruptcy at any time during the last five (5) years?

Case #: _____ **Date Filed:** _____ **Discharge** _____

Claims & Disputes

6. In the past ten (10) years has the Sub-Consultant operated without professional liability insurance?

☐ Yes ☐ No

If “yes,” explain on a separate sheet.

7. In the past five (5) years has any claim in excess of \$50,000 been made against the Sub-Consultant arising from or related to a design or construction contract (including claims for violation of the Federal or California False Claims Act) that was not resolved by change order or contract amendment?

☐ Yes ☐ No

If “yes,” identify the claim by providing the project name, date of the claim, name of the entity (or entities) against whom the claim was filed, a brief description of the nature of the claim, the court in which the case was filed and a brief description of the status of the claim (pending, or if resolved, a brief description of the resolution).

Project:		Date:	
Entity:		Defendant:	
Description:			

Project:		Date:	
Entity:		Defendant:	

Description:

Project:		Date:	
Entity:		Defendant:	
Description:			

8. In the past five (5) years has the Sub-Consultant made any claim in excess of \$50,000 against a project owner arising from or related to a design or construction contract that was not resolved by change order or contract amendment?

☐ Yes ☐ No

If “yes,” identify the claim(s) by providing the project name, date of the claim, name of the claimant, a brief description of the nature of the claim, the court in which the case was filed and a brief description of the status of the claim (pending or, if resolved, a brief description of the resolution).

Project:		Date:	
Claimant:		Court:	
Nature:			
Description:			

Project:		Date:	
Claimant:		Court:	
Nature:			
Description:			

Project:		Date:	
Claimant:		Court:	
Nature:			
Description:			

9. In the last five (5) years, has any insurance carrier, for any form of insurance, refused to renew the insurance policy for the Sub-Consultant?

☐ Yes ☐ No

If "yes" give name the insurance carrier, the form of insurance and the year of the refusal.

Year:		Carrier:		Form:	
Comments:					

Year:		Carrier:		Form:	
Comments:					

Year:		Carrier:		Form:	
Comments:					

III.D SCORED QUESTIONS FOR THE SUB-CONTRACTORS

(This section shall be completed and provided for each "listed" GC Teaming Sub-contractor)

For each required Core Sub-Contractor, answer the following questions:

1. In the last eight (8) years, how many fire training centers or fire stations located in California has the Sub-Contractor provided services on?

Project	Building Type	Owner

2. How many years has the Sub-Contractor been in business in California under its present business name and license number?

Number of Years: _____

3. Is the Sub-Contractor currently a debtor in a bankruptcy case?

☐ Yes ☐ No

If "yes" indicate the case number, and the date on which the petition was filed.

Case #: _____ **Date filed:** _____

4. Was any part of the Sub-Contractor in bankruptcy at any time during the last five (5) years?

☐ Yes ☐ No

Case #: _____ **Date Filed:** _____ **Discharge #** _____

5. Has the Sub-Contractor paid liquidated damages of more than \$50,000 in the last five (5) years?

☐ Yes ☐ No

If "yes", identify all such projects by owner, owner's address, completion date of the project, amount of liquidated damages assessed and all other information necessary to fully explain the assessment of liquidated damages.

Owner:		Address:	
Completed:		Amount:	
Other:			

6. In the last five (5) years, has the Sub-Contractor been disbarred, disqualified, removed, or otherwise prevented from bidding on, or completing any government agency or public works project for any reason?

☐ Yes ☐ No

If “yes,” identify the company, the person within the Sub-Contractor who was associated with that company, the year of the event, the owner of the project, the project and the basis for the action.

Company:		Person:	
Year:		Owner:	
Project:			
Basis:			

7. In the past five (5) years, has any claim in excess of \$50,000 been made against the Sub-Contractor arising from or related to a design or construction contract (including claims for violation of the Federal or California False Claims Act) that was not resolved by change order or contract amendment?

☐ Yes ☐ No

If “yes,” identify the claim by providing the project name, date of the claim, name of the entity (or entities) against whom the claim was filed, a brief description of the nature of the claim, the court in which the case was filed and a brief description of the status of the claim (pending, or if resolved, a brief description of the resolution).

Project:		Date:	
Entity:		Defendant:	
Description:			

Project:		Date:	
Entity:		Defendant:	
Description:			

Project:		Date:	
Entity:		Defendant:	
Description:			

8. In the past five years has the Sub-Contractor made any claim in excess of \$50,000 against a project owner arising from or related to a design or construction contract that was not resolved by change order or contract amendment?

☐ Yes ☐ No

If “yes,” identify the claim(s) by providing the project name, date of the claim, name of the claimant, a brief description of the nature of the claim, the court in which the case was filed and a brief description of the status of the claim (pending or, if resolved, a brief description of the resolution).

Project:		Date:	
Claimant:		Court:	
Nature:			
Description:			

Project:		Date:	
Claimant:		Court:	
Nature:			
Description:			

Project:		Date:	
Claimant:		Court:	
Nature:			
Description:			

9. In the last five (5) years, has any insurance carrier, for any form of insurance, refused to renew the insurance policy for the Sub-Contractor?

☐ Yes ☐ No

If "yes," give name the insurance carrier, the form of insurance and the year of the refusal.

Year:		Carrier:		Form:	
Comments:					

Year:		Carrier:		Form:	
Comments:					

Year:		Carrier:		Form:	
Comments:					

Regulatory Compliance

10. Has Cal OSHA or federal OSHA cited an assessed penalties against the Sub-Contractor of any “serious”, “willful”, or “repeat” violations of its safety or health regulations in the last five (5) years?

NOTE: If the Sub-Contractor has filed an appeal of a citation that has not yet been ruled on, it need not include information about that claim.

☐ Yes ☐ No

If “yes,” describe the citations, including information about the dates of the citations, the nature of the violation, the project on which the citation(s) was or were issued, the amount of penalty paid, if any. If the citation was appealed to the Occupational Safety and Health Appeals Board and a decision has been issued, state the case number and the date of the decision.

Description:		Date:		Nature:	
Project:		Amount:			

Description:		Date:		Nature:	
Project:		Amount:			

Description:		Date:		Nature:	
Project:		Amount:			

Prevailing Wage & Apprenticeship

11. During the last five (5) years, have there been instances in which the Sub-Contractor was penalized or required to pay either back wages or penalties Sub-Contractor's failure to comply with **California's** prevailing wage laws?

This question refers only to the violation of prevailing wage laws, not to violations of the prevailing wage laws by a sub-contractor.

☐ Yes ☐ No

If "yes," describe the nature of each violation, identifying the name of the project, the date of its completion, the public agency for which it was constructed; the number of employees who were initially underpaid and the amount of back wages and penalties that you were required to pay.

Violation:			Project:		
Completion:		Agency:			
Employees:				Amount:	

Violation:			Project:		
Completion:		Agency:			
Employees:				Amount:	

Violation:			Project:		
Completion:		Agency:			
Employees:				Amount:	

Violation:			Project:		
Completion:		Agency:			
Employees:				Amount:	

Violation:			Project:		
Completion:		Agency:			
Employees:				Amount:	

12. During the last five (5) years, have there been occasions in which the Sub-Contractor was penalized or required to pay back wages for failure to comply with the **Federal Davis-Bacon** prevailing wage requirements?

☐ Yes ☐ No

If “yes,” describe the nature of the violation, identifying the name of the project, the date of its completion, the public agency for which it was constructed; the number of employees who were initially underpaid, the amount of back wages you were required to pay along with the amount of any penalty paid.

Violation:		Project:	
Completion:		Agency:	
Employees:		Amount:	

Violation:		Project:	
Completion:		Agency:	
Employees:		Amount:	

Violation:		Project:	
Completion:		Agency:	
Employees:		Amount:	

PART IV: RECENT CONSTRUCTION PROJECTS COMPLETED

IV.A DESIGN BUILD ENTITY AND GENERAL CONTRACTOR EXPERIENCE

The Design Build Entity shall submit at least three (3) and no more than five (5) projects completed in the past eight (8) years by the Design Build Entity or its General Contractor that demonstrate that the Design Build Entity and its General contractor have the experience, competency, capability, and capacity to design and complete, projects of **similar size, scope, or complexity to the Project**; a single project may fulfill more than one required experience criterion.

Only information, experience and work performed by the Design Build Entity's or General Contractor's office that will bid, manage, design, construct, and staff the Project will be considered for prequalification unless otherwise indicated below.

Projects presented for consideration must be submitted on the 2-page form provided in this section. Make additional copies as needed.

The below listed criteria are PASS/FAIL. Failure to submit completed projects that meet the criteria below will result in a failure to prequalify for this Project:

DESIGN BUILD EXPERIENCE:

- At least two (2) projects which were each a minimum of \$24,000,000 in construction cost completed using a Design Build project delivery method.

FIRE TRAINING CENTER EXPERIENCE OR FIRE STATION:

- At least One (1) completed Fire Training Center or Fire Station: Fire Training Center or Fire Station that is at least seventy-five percent (75%) complete as of the date of Prequalification application submittal.

CALIFORNIA COUNTY EXPERIENCE:

- At least one (1) completed project of at least \$20,000,000 in construction cost where a California County was the authority having jurisdiction (AHJ) on the project.

COMPARABLE/RELEVANT EXPERIENCE:

- At least two (1) completed projects which were a minimum of four (4) stories in height.
- At least two (2) completed projects which were built in the State of California.

**DESIGN BUILD ENTITY – GENERAL CONTRACTOR
COMPARABLY SIZED PROJECT # _____**

VERIFY ALL CONTACTS PRIOR TO SUBMITTAL.

*Do not leave any spaces blank. Responses such as “N/A” are not acceptable.
If not applicable, state “Not Applicable” and explain why. If none, state “NONE.”*

Reference Information:

Project Name: _____

Project or Contract Number: _____

Project Location: _____ , _____ , _____
Street Address City & State Zip Code

Owner Information: _____ Contact Person: _____
Owner's Name Name & Title

Address: _____ , _____ , _____
Street Address City & State Zip Code

Telephone: _____ Facsimile: _____ Email: _____

Address of **Design Build Entity or General Contractor's** Office that Performed the Work:

_____ , _____ , _____
Street Address City & State Zip Code

Name of **Design Build Entity or General Contractor's**
Project Manager for project: _____

Name of **Design Build Entity or General Contractor's**
Superintendent for project: _____

Contractor: _____

Contact Person: _____

Address: _____ , _____ , _____
Street Address City & State Zip Code

Telephone: _____ Facsimile: _____ Email: _____

Design Firm: _____ Contact Person: _____
Name & Title

Address: _____ , _____ , _____
Street Address City & State Zip Code

Telephone: _____ Facsimile: _____ Email: _____

Name of Design Firm's Project Manager for project: _____

Contract Time:

Start Date: _____
Month/Day/Year

Scheduled Completion Date: _____
Month/Day/Year

Actual Completion Date: _____
Month/Day/Year

Days Extended due to Unexcused Delays: _____

Contract Amount:

\$ _____
Base Amount

\$ _____
Adjustment Due to Change Orders

\$ _____
Final Contract Amount

Project Information:

Was the project a Design Build project with \$24,000,000 or more construction cost? Yes ☐ No ☐

Type of Project: Fire Facility ☐ Jail / Prison ☐ Other ☐ _____

Type of Owner: Public ☐ Private ☐

Was the project a minimum 14,000 square feet? Yes ☐ No ☐

Was the project four (4) or more stories in height. Yes ☐ No ☐

Was the project built in California? Yes ☐ No ☐

Was the Office of the State Fire Marshall (CA) the authority having jurisdiction? Yes ☐ No ☐

Did the project achieve LEED-NC Certification of Silver or higher? Yes ☐ No ☐

Project Description: *(Provide a brief description including project photo)*

IV.B ARCHITECT EXPERIENCE

The Architect shall submit at least three (3) and no more than five (5) projects completed in the past eight (8) years that demonstrate that the Architect has the experience, competency, capability, and capacity to design and complete, projects of **similar size, scope, or complexity to the Project**; a single project may fulfill more than one required experience criterion.

Only information, experience and work performed by the Architect's office that will bid, manage, design, construct, and staff the Project will be considered for prequalification.

Projects presented for consideration must be submitted on the 2-page form provided in this section. Make additional copies as needed.

The below listed criteria are PASS/FAIL. Failure to submit completed projects that meet the criteria below will result in a failure to prequalify for this project:

DESIGN BUILD EXPERIENCE:

- At least two (2) projects which were each a minimum of \$24,000,000 in construction cost completed using a Design Build project delivery.

FIRE TRAINING CENTER OR FIRE STATION EXPERIENCE:

- At least One (1) completed Fire Training Center or Fire Station: Fire Training Centers or Fire Station that is at least seventy-five percent (75%) complete as of the date of Prequalification application submittal.

CALIFORNIA COUNTY EXPERIENCE:

- At least one (1) completed project of at least \$20,000,000 in construction cost where a California County was the authority having jurisdiction (AHJ) on the project.

COMPARABLE/RELEVANT EXPERIENCE:

- At least two (1) completed projects which were a minimum of four (4) stories in height.
- At least two (2) completed projects which were built in the State of California.

ARCHITECT COMPARABLY SIZED PROJECT # _____

VERIFY ALL CONTACTS PRIOR TO SUBMITTAL.

*Do not leave any spaces blank. Responses such as "N/A" are not acceptable.
If not applicable, state "Not Applicable" and explain why. If none, state "NONE."*

Reference Information:

Project Name: _____

Project or Contract Number: _____

Project Location: _____ , _____ , _____

Street Address

City & State

Zip Code

Owner Information: _____

Owner's Name

Contact Person: _____

Name & Title

Address: _____ , _____ , _____

Street Address

City & State

Zip Code

Telephone: _____

Facsimile: _____

Email: _____

Address of **Architect's** Office that Performed the Work:

_____ , _____ , _____
Street Address

City & State

Zip Code

Name of **Architect's** Project Manager for project: _____

Contractor: _____

Contact Person: _____

Address: _____ , _____ , _____

Street Address

City & State

Zip Code

Telephone: _____

Facsimile: _____

Email: _____

Design Firm: _____

Contact Person: _____

Name & Title

Address: _____ , _____ , _____

Street Address

City & State

Zip Code

Telephone: _____

Facsimile: _____

Email: _____

Name of Design Firm's Project Manager for project: _____

Contract Time:

Start Date: _____
Month/Day/Year

Scheduled Completion Date: _____
Month/Day/Year

Actual Completion Date: _____
Month/Day/Year

Days Extended due to Unexcused Delays: _____

Contract Amount:

\$ _____
Base Amount

\$ _____
Adjustment Due to Change Orders

\$ _____
Final Contract Amount

Project Information:

Was the project a Design Build project with \$24,000,000 or more construction cost? Yes ☐ No ☐

Type of Project: Fire Facility ☐ Jail / Prison ☐ Other ☐ _____

Type of Owner: Public ☐ Private ☐

Was the project a minimum 14,000 square feet? Yes ☐ No ☐

Was the project four (4) or more stories in height. Yes ☐ No ☐

Was the Office of the State Fire Marshall (CA) the authority having jurisdiction?? Yes ☐ No ☐

Did the project achieve LEED-NC certification of Silver or higher? Yes ☐ No ☐

Project Description: *(Provide a brief description including project photo)*

PART V: KEY PERSONNEL

V.A Construction Project Manager Qualifications (For General Contractor)

Complete this form in its entirety. Resumes shall be submitted **in addition** to this form. **Resumes shall NOT be submitted in lieu of this form.** *If more space is needed, provide the information using the format below and attach it to this Questionnaire.*

Name of Proposed Construction Project Manager: _____

Institution/School	Degree/License/Certificate Received	Major/Discipline	Year
_____	_____	_____	_____
_____	_____	_____	_____

List all Project Management Training / Certifications	Years of Experience
_____	_____
_____	_____

Begin with your most recent experience. List all project experience that demonstrates the experience and background required to fulfill the assigned project responsibilities for the Project.

Firm: _____	Years of Employment: _____ through _____
Project Name & Location: _____	Contract Amount: _____ \$
Owner: _____	Contact Name, Title: _____
Type of Facility: Fire Facility <input type="checkbox"/> Other <input type="checkbox"/>	Completion Date: _____
Job Title: _____	
Design-Build Project (Y) or (N): _____	LEED Certified Project (Y) or (N): _____

Firm: _____	Years of Employment: _____ through _____
Project Name & Location: _____	Contract Amount: _____ \$
Owner: _____	Contact Name, Title: _____
Type of Facility: Fire Facility <input type="checkbox"/> Other <input type="checkbox"/>	Completion Date: _____
Job Title: _____	
Design-Build Project (Y) or (N): _____	LEED Certified Project (Y) or (N): _____

Firm: _____	Years of Employment: _____ through _____
Project Name & Location: _____	Contract Amount: _____ \$
Owner: _____	Contact Name, Title: _____
Type of Facility: Fire Facility <input type="checkbox"/> Other <input type="checkbox"/>	Completion Date: _____
Job Title: _____	
Design-Build Project (Y) or (N): _____	LEED Certified Project (Y) or (N): _____

V.B Project Engineer Qualifications (For General Contractor)

Complete this form in its entirety. Resumes shall be submitted **in addition to this form. Resumes shall NOT be submitted in lieu of this form.** *If more space is needed, provide the information using the format below and attach it to this Questionnaire.*

Name of Proposed Project Engineer: _____

Institution/School	Degree/License/Certificate Received	Major/Discipline	Year
_____	_____	_____	_____
_____	_____	_____	_____

List all Project Management Training / Certifications	Years of Experience
_____	_____
_____	_____

Begin with your most recent experience. List all project experience that demonstrates the experience and background required to fulfill the assigned project responsibilities for the Project.

Firm: _____	Years of Employment: _____ through _____
Project Name & Location: _____	
Owner: _____	Contact Name, Title: _____
Type of Facility: Fire Facility <input type="checkbox"/> Other <input type="checkbox"/>	Completion Date: _____
Job Title: _____	
Design-Build Project (Y) or (N): LEED Certified Project (Y) or (N): _____	
Firm: _____	Years of Employment: _____ through _____
Project Name & Location: _____	
Owner: _____	Contact Name, Title: _____
Type of Facility: Fire Facility <input type="checkbox"/> Other <input type="checkbox"/>	Completion Date: _____
Job Title: _____	
Design-Build Project (Y) or (N): LEED Certified Project (Y) or (N): _____	
Firm: _____	Years of Employment: _____ through _____
Project Name & Location: _____	
Owner: _____	Contact Name, Title: _____
Type of Facility: Fire Facility <input type="checkbox"/> Other <input type="checkbox"/>	Completion Date: _____
Job Title: _____	
Design-Build Project (Y) or (N): LEED Certified Project (Y) or (N): _____	

V.C Superintendent Qualifications (For General Contractor)

Complete this form in its entirety. Resumes shall be submitted **in addition to this form**. **Resumes shall NOT be submitted in lieu of this form.** *If more space is needed, provide the information using the format below and attach it to this Questionnaire.*

**Name of Proposed Construction
Superintendent:** _____

Institution/School	Degree/License/Certificate Received	Major/Discipline	Year
_____	_____	_____	_____
_____	_____	_____	_____

List all Construction Training / Certifications	Years of Experience
_____	_____
_____	_____

Begin with your most recent experience. List all project experience that demonstrates the experience and background required to fulfill the assigned project responsibilities for the Project.

Firm: _____	Years of Employment:	_____	through	_____
Project Name & Location:	_____			
Owner:	Contact Name, Title:	_____		
Type of Facility: Fire Facility <input type="checkbox"/>	Other <input type="checkbox"/>	Completion Date:	_____	
Job Title:	_____			
Design-Build Project (Y) or (N):	LEED Certified Project (Y) or (N):	_____		

Firm: _____	Years of Employment:	_____	through	_____
Project Name & Location:	_____			
Owner:	Contact Name, Title:	_____		
Type of Facility: Fire Facility <input type="checkbox"/>	Other <input type="checkbox"/>	Completion Date:	_____	
Job Title:	_____			
Design-Build Project (Y) or (N):	LEED Certified Project (Y) or (N):	_____		

Firm: _____	Years of Employment:	_____	through	_____
Project Name & Location:	_____			
Owner:	Contact Name, Title:	_____		
Type of Facility: Fire Facility <input type="checkbox"/>	Other <input type="checkbox"/>	Completion Date:	_____	
Job Title:	_____			
Design-Build Project (Y) or (N):	LEED Certified Project (Y) or (N):	_____		

V.D Quality Assurance Manager Qualifications (For General Contractor)

Complete this form in its entirety. Resumes shall be submitted **in addition to this form**. **Resumes shall NOT be submitted in lieu of this form.** *If more space is needed, provide the information using the format below and attach it to this Questionnaire.*

Name of Proposed Quality Assurance Manager: _____

Institution/School	Degree/License/Certificate Received	Major/Discipline	Year
_____	_____	_____	_____
_____	_____	_____	_____

List all QA/QC Training / Certifications	Years of Experience
_____	_____
_____	_____

Begin with your most recent experience. List all project experience that demonstrates the experience and background required to fulfill the assigned project responsibilities for the Project.

Firm: _____	Years of Employment: _____ through _____
Project Name & Location: _____	Contract Amount: _____ \$
Owner: _____	Contact Name, Title: _____
Type of Facility: Fire Facility <input type="checkbox"/> Other <input type="checkbox"/>	Completion Date: _____
Job Title: _____	
Design-Build Project (Y) or (N): _____	LEED Certified Project (Y) or (N): _____

Firm: _____	Years of Employment: _____ through _____
Project Name & Location: _____	Contract Amount: _____ \$
Owner: _____	Contact Name, Title: _____
Type of Facility: Fire Facility <input type="checkbox"/> Other <input type="checkbox"/>	Completion Date: _____
Job Title: _____	
Design-Build Project (Y) or (N): _____	LEED Certified Project (Y) or (N): _____

Firm: _____	Years of Employment: _____ through _____
Project Name & Location: _____	Contract Amount: _____ \$
Owner: _____	Contact Name, Title: _____
Type of Facility: Fire Facility <input type="checkbox"/> Other <input type="checkbox"/>	Completion Date: _____
Job Title: _____	
Design-Build Project (Y) or (N): _____	LEED Certified Project (Y) or (N): _____

V.E Principal-in-Charge Qualifications (For Architect)

Complete this form in its entirety. Resumes shall be submitted **in addition to this form**. **Resumes shall NOT be submitted in lieu of this form.** *If more space is needed, provide the information using the format below and attach it to this Questionnaire.*

Name of Proposed Principal-in-Charge: _____

Institution/School	Degree/License/Certificate Received	Major/Discipline	Year
_____	_____	_____	_____
_____	_____	_____	_____

List all Project Management Training / Certifications	Years of Experience
_____	_____
_____	_____

Begin with your most recent experience. List all project experience that demonstrates the experience and background required to fulfill the assigned project responsibilities for the Project.

Firm: _____	Years of Employment: _____ through _____
Project Name & Location: _____	Contract Amount: _____ \$
Owner: _____	Contact Name, Title: _____
Type of Facility: Fire Facility <input type="checkbox"/> Other <input type="checkbox"/> _____	Completion Date: _____
Job Title: _____	
Design-Build Project (Y) or (N): _____	LEED Certified Project (Y) or (N): _____

Firm: _____	Years of Employment: _____ through _____
Project Name & Location: _____	Contract Amount: _____ \$
Owner: _____	Contact Name, Title: _____
Type of Facility: Fire Facility <input type="checkbox"/> Other <input type="checkbox"/> _____	Completion Date: _____
Job Title: _____	
Design-Build Project (Y) or (N): _____	LEED Certified Project (Y) or (N): _____

Firm: _____	Years of Employment: _____ through _____
Project Name & Location: _____	Contract Amount: _____ \$
Owner: _____	Contact Name, Title: _____
Type of Facility: Fire Facility <input type="checkbox"/> Other <input type="checkbox"/> _____	Completion Date: _____
Job Title: _____	
Design-Build Project (Y) or (N): _____	LEED Certified Project (Y) or (N): _____

Firm: _____	Years of Employment: _____ through _____
Project Name & Location: _____	Contract Amount: _____ \$
Owner: _____	Contact Name, Title: _____
Type of Facility: <input type="checkbox"/> County Fire Training Facility Other <input type="checkbox"/> _____	Completion Date: _____
Job Title: _____	
Design-Build Project (Y) or (N): _____	LEED Certified Project (Y) or (N): _____

V.F Project Manager Qualifications (For Architect)

Complete this form in its entirety. Resumes shall be submitted **in addition to this form**. **Resumes shall NOT be submitted in lieu of this form.** *If more space is needed, provide the information using the format below and attach it to this Questionnaire.*

Name of Proposed Project Manager: _____

Institution/School	Degree/License/Certificate Received	Major/Discipline	Year
_____	_____	_____	_____
_____	_____	_____	_____

List all Project Management Training / Certifications	Years of Experience
_____	_____
_____	_____

Begin with your most recent experience. List all project experience that demonstrates the experience and background required to fulfill the assigned project responsibilities for the Project.

Firm: _____	Years of Employment: _____ through _____
Project Name & Location: _____	Contract Amount: _____ \$
Owner: _____	Contact Name, Title: _____
Type of Facility: Fire Facility <input type="checkbox"/> Other <input type="checkbox"/>	Completion Date: _____
Job Title: _____	
Design-Build Project (Y) or (N): _____	LEED Certified Project (Y) or (N): _____
Firm: _____	Years of Employment: _____ through _____
Project Name & Location: _____	Contract Amount: _____ \$
Owner: _____	Contact Name, Title: _____
Type of Facility: Fire Facility <input type="checkbox"/> Other <input type="checkbox"/>	Completion Date: _____
Job Title: _____	
Design-Build Project (Y) or (N): _____	LEED Certified Project (Y) or (N): _____
Firm: _____	Years of Employment: _____ through _____
Project Name & Location: _____	Contract Amount: _____ \$
Owner: _____	Contact Name, Title: _____
Type of Facility: Fire Facility <input type="checkbox"/> Other <input type="checkbox"/>	Completion Date: _____
Job Title: _____	
Design-Build Project (Y) or (N): _____	LEED Certified Project (Y) or (N): _____

V.G Project Architect Qualifications (For Design Firm)

Complete this form in its entirety. Resumes shall be submitted **in addition to this form**. **Resumes shall NOT be submitted in lieu of this form.** *If more space is needed, provide the information using the format below and attach it to this Questionnaire.*

Name of Proposed Project Architect: _____

Institution/School	Degree/License/Certificate Received	Major/Discipline	Year
_____	_____	_____	_____
_____	_____	_____	_____

List all Project Management Training / Tools	Years of Experience
_____	_____
_____	_____

Begin with your most recent experience. List all project experience that demonstrates the experience and background required to fulfill the assigned project responsibilities for the Project.

Firm: _____	Years of Employment:	_____	through	_____
Project Name & Location:	_____			
Owner:	Contact Name, Title:	_____		
Type of Facility: Fire Facility <input type="checkbox"/>	Other <input type="checkbox"/>	Completion Date:	_____	
Job Title:	_____			
Design-Build Project (Y) or (N):	LEED Certified Project (Y) or (N):	_____		

Firm: _____	Years of Employment:	_____	through	_____
Project Name & Location:	_____			
Owner:	Contact Name, Title:	_____		
Type of Facility: Fire Facility <input type="checkbox"/>	Other <input type="checkbox"/>	Completion Date:	_____	
Job Title:	_____			
Design-Build Project (Y) or (N):	LEED Certified Project (Y) or (N):	_____		

Firm: _____	Years of Employment:	_____	through	_____
Project Name & Location:	_____			
Owner:	Contact Name, Title:	_____		
Type of Facility: Fire Facility <input type="checkbox"/>	Other <input type="checkbox"/>	Completion Date:	_____	
Job Title:	_____			
Design-Build Project (Y) or (N):	LEED Certified Project (Y) or (N):	_____		

PART VI: CERTIFICATION

I, the undersigned, certify and declare that I am authorized to make this certification on behalf of the Design Build Entity, _____. I have read the contents of this completed Prequalification Questionnaire and the submittal in response to the Request for Prequalification, and I am thoroughly knowledgeable of its contents.

I declare under penalty of perjury under the laws of the State of California that the content of the Questionnaire and the submittal in response to the Request for Prequalification is true and correct.

Executed at		,	on	
	(City)		(State)	(Date)

(Signature)

(Printed Name)

(Firm)

(Title)

The receipt of the following addenda is hereby acknowledged:

Addendum No. _____, dated _____

Addendum No. _____, dated _____

Addendum No. _____, dated _____

Reference Interview Questions

REFERENCE INTERVIEW QUESTIONS

Design Build General Contractor

The following questions will be used to interview selected contacts from at least one (1) of the recently completed projects. The County will select projects and conduct the interviews. No action on the Design Build Entity's part is necessary. *These questions are included in the package given to the Design Build Entity for information only.*

Design

Build

Entity:

Project #:

Project:

Brief Description:

1. Are there any outstanding stop notices, liens, or claims by the General Contractor that are currently unresolved on contracts for which notices of completion were recorded more than 120 days ago?
Yes ☐ No ☐ If "yes," how many separate instances? _____
2. On a scale of 1-10, with 10 being the best, did the General Contractor provide adequate personnel throughout the entirety of the construction phase?
Rating: _____
3. On a scale of 1-10, with 10 being the best, did the General Contractor provide adequate supervision?
Rating: _____
4. On a scale of 1-10, with 10 being the best, was there adequate equipment provided on the job?
Rating: _____
5. On a scale of 1-10, with 10 being the best, was the General Contractor timely in providing reports and other paperwork, including change order paperwork and scheduling updates?
Rating: _____
6. On a scale of 1-10, with 10 being the best, did the General Contractor adhere to the project schedule that your agency or business approved?
Rating: _____

-
7. Was the project completed on time?
Yes ☐ No ☐ If "no," rate General Contractor responsibility: _____
8. On a scale of 1-10, with 10 being the best, rate the General Contractor on the timely submission of reasonable cost and time estimates to perform change order work.
Rating: _____
9. On a scale of 1-10, with 10 being the best, rate the General Contractor on how well it performed the work after a change order was issued, and how well it integrated the change order work into the existing work.
Rating: _____
10. On a scale of 1-10, with 10 being the best, rate how has the General Contractor performed in providing Operation & Maintenance manuals, completing as-built drawings, providing required training and taking care of warranty items?
Rating: _____
11. On a scale of 1-10, with 10 being the best, rate the General Contractor on whether there were an unusually high number of change order requests, given the nature of the project, or unusual difficulty in resolving them.
Rating: _____
12. On a scale of 1-10, with 10 being the highest, rate the General Contractor with respect to timely payments by it to sub-contractors and/or suppliers.
Rating: _____
13. On a scale of 1-10, with 10 being the best, rate the quality of the work overall.
Rating: _____
14. On a scale of 1-10, with 10 being the best, was the General Contractor collaborative with the owner and the architect?
Rating: _____
15. On a scale of 1-10, with 10 being the best, did the General Contractor try to resolve disputes in a fair and equitable manner.
Rating: _____
16. On a scale of 1-10, with 10 being the best, how well did the General Contractor work with the Design Build Architect.
Rating: _____

REFERENCE INTERVIEW QUESTIONS

Design Build Architect

The following questions will be used to interview selected contacts from at least one (1) of the recently completed projects. The County will select projects and conduct the interviews. No action on the Design Build Entity's part is necessary. *These questions are included in the package given to the Design Build Entity for information only.*

Design

Build

Entity:

Project #:

Project:

Brief Description:

1. Are there any outstanding stop notices, liens, or claims by the Architect that are currently unresolved on contracts for which notices of completion were recorded more than 120 days ago?
Yes ☐ No ☐ If "yes," how many separate instances? _____
2. On a scale of 1-10, with 10 being the best, did the Architect provide adequate personnel for the Design and Construction phases?
Rating: _____
3. On a scale of 1-10, with 10 being the best, did the Architect provide adequate supervision during the construction phase?
Rating: _____
4. On a scale of 1-10, with 10 being the best, did the Architect adhere to the concepts and requirements outlined in the bridging documents.
Rating: _____
5. On a scale of 1-10, with 10 being the best, was the Architect timely in providing reports and other paperwork, including design milestone updates and change order paperwork?
Rating: _____
6. On a scale of 1-10, with 10 being the best, did the Architect adhere to the project schedule that your agency or business approved?
Rating: _____

-
7. Was the project completed on time?
Yes ☐ No ☐ If “no,” rate Architect responsibility: _____
8. On a scale of 1-10, with 10 being the best, rate the Architect on the timely submission of drawings and specifications to perform change order work.
Rating: _____
9. On a scale of 1-10, with 10 being the best, rate the Architect on how well it responded to requests from the General Contractor including RFIs, submittals, change order requests.
Rating: _____
10. On a scale of 1-10, with 10 being the best, rate the Architect on how well it works with its sub-consultants.
Rating: _____
11. On a scale of 1-10, with 10 being the best, rate the Architect on whether there were an unusually high number of change order requests, given the nature of the project, or unusual difficulty in resolving them.
Rating: _____
12. On a scale of 1-10, with 10 being the highest, rate the Architect on how well it works with “Authority Having Jurisdiction” (AHJ) and other regulatory agencies.
Rating: _____
13. On a scale of 1-10, with 10 being the best, rate the quality of the “design” work overall.
Rating: _____
14. On a scale of 1-10, with 10 being the best, was the Architect collaborative with the owner and the General Contractor?
Rating: _____
15. On a scale of 1-10, with 10 being the best, did the Architect try to resolve disputes in a fair and equitable manner.
Rating: _____

Scoring Worksheets

SCORING WORKSHEETS

The rating of the Design Build Entity is determined by: (1) confirming the correct answers to the Essential Requirements, (2) adding the point value of all the answers to the Scored Questionnaire and (3) adding the point value of all Reference Interview Questions. The table below gives the value of each scored question for the Essential Requirements and Scored Questionnaire parts.

The Scoring Worksheets list every essential requirement and scored question. The requirements and questions are abbreviated to capture the essence of the item. The abbreviation does not change the actual requirement or question as written in the Essential Requirements and Scored Questionnaire sections of the Prequalification Questionnaire.

PART II.A Essential Requirements For the Design Build Entity as a Whole

Question	Requirement / Question	Yes	No	Score
1	Are Design Build Entity's organizational and indemnity documents attached? <i>Yes or N/A (corp. or sole prop.) = 0; No = 1</i>			
2	Is Design Build Entity's financial statement attached? <i>Yes = 0; No = 1</i>			
3	Has Design Build Entity ever defaulted on a construction contract? <i>Yes = 1; No = 0</i>			
4	Has Design Build Entity's surety paid for completion within the last 5 years? <i>Yes = 1; No = 0</i>			
5	Is Design Build Entity ineligible to bid on public works? <i>Yes = 1; No = 0</i>			
6	Has Design Build Entity been convicted of a crime on a public contract within the last 5 years? <i>Yes = 1; No = 0</i>			
7	Has Design Build Entity been found liable or guilty in a civil or criminal action for making a false claim? <i>Yes = 1 pt; No = 0</i>			
8	Has Design Build Entity been convicted of a crime related to construction? <i>Yes = 1 pt; No = 0</i>			
9	Has Design Build Entity been convicted of fraud, theft or dishonesty? <i>Yes = 1 pt; No = 0</i>			
Total Score for Essential Requirements (DISQUALIFIED if score is greater than "0")				

Question #	Requirement / Question	Yes	No	Score
10	Does General Contractor and each proposed Sub-contractor have a valid, current California contractor's license? <i>Yes = 0; No = 1</i>			
11	Does General Contractor have at least \$5,000,000 per occurrence and \$10,000,000 aggregate liability insurance? <i>Yes = 0; No = 1</i>			
12	Do General Contractor and each proposed Sub-contractor have current workers' compensation insurance policies? <i>Yes = 0; No = 1</i>			
13	Are General Contractor's financial statements attached? <i>Yes = 0; No = 1</i>			
14	Is General Contractor's notarized surety statement attached? <i>Yes = 0; No = 1</i>			
15	Have the General Contractor or any proposed Sub-contractors had their license revoked or suspended in the last 5 years? <i>Yes = 1; No = 0</i>			
16	Have General Contractor's or any proposed Sub-contractors' surety paid for completion within the last 5 years? <i>Yes = 1; No = 0</i>			
17	Are General Contractor or any proposed Sub-contractors ineligible to bid on public works? <i>Yes = 1; No = 0</i>			
18	Have General Contractor or any proposed Sub-contractors been convicted of crime on a public contract within the last 5 years? <i>Yes = 1; No = 0</i>			
19	Have General Contractor or any proposed Sub-contractors been found liable or guilty in a civil or criminal action for making a false claim? <i>Yes = 1 pt; No = 0</i>			
20	Have General Contractor or any proposed Sub-contractors been convicted of a crime related to construction? <i>Yes = 1 pt; No = 0</i>			

Question #	Requirement / Question	Yes	No	Score
21	Have General Contractor or any proposed Sub-contractors been convicted of a fraud, theft or dishonesty? <i>Yes = 1 pt; No = 0</i>			
Total Score for Essential Requirements (DISQUALIFIED if score is greater than "0")				

PART II.C Essential Requirements For the Architect and Core Sub-Consultants

Question #	Requirement / Question	Yes	No	Score
22	Do all Architects and Sub-consultants have a valid, current, professional licenses? <i>Yes = 0; No = 1</i>			
23	Does Architect have, or can the Architect obtain, at least \$5,000,000 per occurrence and \$10,000,000 aggregate liability insurance? <i>Yes = 0; No = 1</i>			
24	Do Architect and all Sub-consultants have current workers' compensation insurance policies? <i>Yes = 0; No = 1</i>			
25	Are Architect's financial statements attached? <i>Yes = 0; No = 1</i>			
26	Have the Architect or any proposed Sub-consultants had their license, credential or registration revoked or suspended in the last 5 years? <i>Yes = 1; No = 0</i>			
27	Have the Architect or any proposed Sub-consultants been convicted of a crime on a government contract within the last 5 years? <i>Yes = 1; No = 0</i>			
28	Have the Architect or any proposed Sub-consultants been found liable or guilty in a civil or criminal action for making a false claim? <i>Yes = 1 pt; No = 0</i>			
29	Have the Architect or any proposed Sub-consultants been convicted of a crime related to construction? <i>Yes = 1 pt; No = 0</i>			
30	Have the Architect or any proposed Sub-consultants been convicted of fraud, theft or dishonesty? <i>Yes = 1 pt; No = 0</i>			
Total Score for Essential Requirements (DISQUALIFIED if score is greater than "0")				

PART III.A Scored Questions for the General Contractor

Question #	Requirement / Question	Yes	No	Instance	Score
1	How many years has General Contractor been in business in California? <i>3 yrs or less = 2 pts; 4 yrs = 3 pts; 5 yrs = 4 pts; 6 yrs + = 5 pts</i>				
2	How many Fire Training Centers or Fire Stations in California has General Contractor completed in the last 8 years? <i>1 EA = 2 pts; +1 = 3 pts; +2 = 4 pts; +3 or more = 5 pts, less than 1 EA = 0 pts.</i>				
3	Does General Contractor currently employ LEED Accredited Professionals that would be assigned to this project? <i>Yes =3; No =0</i>				
4	Has General Contractor worked on a project where a County was the authority having jurisdiction (AHJ)? <i>Yes =3; No =0</i>				
5	Is General Contractor currently in bankruptcy? <i>Yes = 0 pts; No = 3 pts</i>				
6	Has General Contractor been in bankruptcy during the last 5 years? <i>Yes = 0 pts; No = 3 pts</i>				
7	Has General Contractor been cited for violations of the Contractor's State License Law in the last 5 years? <i>Yes = 0 pts; No = 2 pts</i>				
8	How many projects has General Contractor paid liquidated damages of more than \$50,000 in the last 5 years? <i>0 to 1 projects = 5 pts; 2 projects =3 pts; more than 2 = 0 pts.</i>				
9	Has General Contractor or its associates ever defaulted on a construction contract? <i>Yes = 0 pts; No = 2 pts</i>				
10	Has General Contractor been prevented from bidding on or completing a public works project in the last 5 years? <i>Yes =subtract 5 pts; No =5 pts</i>				
11	Has General Contractor been denied the award of a public works project based on a finding of not being a responsible bidder? <i>Yes = 0 pts; No = 5 pts</i>				

Question #	Requirement / Question	Yes	No	Instance	Score
12	Has a claim of over \$50,000 been filed against General Contractor in the last 5 years? <i>5 pts for 0 or 1 instance; 3 pts for 2 instances; 0 pts for more than 2 instances.</i>				
13	Has General Contractor filed a claim of more than \$50,000 against a project owner in the last 5 years that was not resolved by change order or amendment? <i>5 pts for 0 or 1 instance; 3 pts for 2 instances; 0 pts for more than 2 instances</i>				
14	Has any insurance carrier refused to renew General Contractor's policy? <i>5 pts for 0 or 1 instance; 3 pts for 2 instances; 0 pts for more than 2</i>				
15	Has General Contractor paid more than 1% for a performance and payment bond in the last 5 years? <i>5 pts for up to 1%; 3 pts for no higher than 1.10%; 0 pts for any other answer</i>				
16	Has a surety ever denied General Contractor payment or performance bond coverage in the last 5 years? <i>Yes =0; No =5</i>				
17	Has CAL OSHA cited General Contractor for serious, willful or repeated safety violations in the last 5 years? <i>5 pts for 0 or 1 instance; 3 pts for 2 instances; 0 pts for any other answer</i>				
18	Has federal OSHA cited or assessed penalties against General Contractor in the last 5 years? <i>5 pts for 0 or 1 instance; 3 pts for 2 instances; 0 pts for any other answer</i>				
19	Has EPA, AQMD or RWQCB cited and assessed penalties against General Contractor in the last 5 years? <i>5 pts for 0 to 1 instance; 3 pts for 2 instances; 0 pts for any other answer</i>				
20	Has General Contractor been cited for violations of FICA withholding requirements in the last 5 years? <i>Yes = 0 pts; No = 2 pts</i>				

Question #	Requirement / Question	Yes	No	Instance	Score
21	Has General Contractor been issued a worker's comp EMR in the last 5 years? <i>5 pts for .95 or less; 3 pts if between .96 and 1.00; 0 pts for any other answer</i>				
22	Has General Contractor been without workmen's compensation insurance at any time in the last 5 years? <i>5 pts for 0 to 1 instance; 0 pts for any other answer</i>				
23	Has General Contractor been required to pay back wages or failed to comply with state prevailing wage laws more than once in the last 5 years? <i>5 pts for 0 to 2 instances; 3 pts for 3 instances; 0 pts for any other answer</i>				
24	Has General Contractor been required to pay back wages or failed to comply with federal Davis-Bacon prevailing wage laws more than once in the last 5 years? <i>5 pts for 0 to 2 instances; 3 pts for 3 instances; 0 pts for any other answer</i>				
25	Do General Contractor and proposed Sub-contractors know their obligations re employment of apprentices on public works projects? <i>Yes =1; No =0</i>				
26	Does General Contractor intend to use apprentices from apprenticeship program approved by California Apprenticeship Council? <i>Yes =1; No =0</i>				
27	Has General Contractor operated state-approved apprenticeship program in the last 5 years? <i>Yes =1; No =0</i>				
28	Has General Contractor violated apprenticeship laws or regulations in the last 5 years? <i>Yes =0; No =1</i>				
29	Does General Contractor require safety meetings? <i>Yes =1; No =0</i>				
30	Does General Contractor have a written Site-Specific Safety Plan? <i>Yes =1; No =0</i>				

Question #	Requirement / Question	Yes	No	Instance	Score
31	Does General Contractor have personnel permanently assigned to safety? <i>Yes =1; No =0</i>				
32	Does the General contractor have a substance abuse testing program? <i>Yes =1; No =0</i>				
33	Does the General Contractor have a written QA/QC program? <i>Yes =1; No =0</i>				
34	Does the General Contractor have personnel permanently assigned to QA/QC? <i>Yes =1; No =0</i>				
Total for Scored Contractor Questions Minimum Qualifying Score is 86 of 113 total possible points.					

PART III.B Scored Questions for the Architect

Question #	Requirement / Question	Yes	No	Instance	Score
1	How many Fire Training Centers or Fire Stations has Architect designed and completed in the last 5 years? <i>1 EA = 2 pts; +1 = 3 pts; +2 = 4 pts; +3 or more = 5 pts, less than 1 EA = 0 pts.</i>				
2	How many Fire Training Centers or Fire Stations in California has Architect of Record designed and completed in the last 8 years? <i>1 EA = 2 pts; +1 = 3 pts; +2 = 4 pts; +3 or more = 5 pts, less than 1 EA = 0 pts.</i>				
3	How many years has Architect been in business in California? <i>3 yrs or less = 2 +pts; 4 yrs = 3 pts; 5 yrs = 4 pts; 6 yrs + = 5 pts</i>				
4	Does Architect currently employ LEED Accredited Professionals that will be assigned to this project? <i>Yes =3; No =0</i>				
5	Has Architect worked on a project where a County was the authority having jurisdiction (AHJ)?? <i>Yes =3; No =0</i>				
6	Is Architect currently a debtor in a bankruptcy case? <i>Yes =0; No =3</i>				
7	Was Architect in bankruptcy in the last 5 years? <i>Yes =0; No =3</i>				
8	Has the Architect operated without Profession Liability insurance in the last 10 years? <i>Yes =0; No =3</i>				
9	Has a claim in excess of \$50,000 been filed against Architect in the last 5 years that was not resolved by change order or contract amendment? <i>5 pts for 0 to 2 instances; 3 pts for 3 instances; 0 pts for any other answer.</i>				

Question #	Requirement / Question	Yes	No	Instance	Score
10	Has Architect filed a claim in excess of \$50,000 against any owner in the last 5 years that was not resolved by change order or contract amendment? <i>5 pts for 0 or 1 instance; 3 pts for 2 instances; 0 pts for any other answer.</i>				
11	Has any insurance carrier refused to renew a policy for the Architect in the last 5 years? <i>5 pts for 0 to 2 instances; 3 pts for 3 instances; 0 pts for any other answer</i>				
Total for Scored Architect Questions Minimum Qualifying Score is 34 of 45 total possible points.					

PART III.C Scored Questions for the Sub-Consultant Members

Question #	Requirement / Question	Yes	No	Instance	Score
1	For how many Fire Training Centers or Fire Stations has Sub-consultant provided engineering services in the last 5 years? <i>1 EA = 2 pts; +1 = 3 pts; +2 = 4 pts; +3 or more = 5 pts, less than 1 EA = 0 pts.</i>				
2	For how many Fire Training Centers or Fire Stations in California has Sub-consultant's principal engineer provided engineering services in the last 8 years? <i>1 EA = 2 pts; +1 = 3 pts; +2 = 4 pts; +3 or more = 5 pts, less than 1 EA = 0 pts.</i>				
3	How many years has Sub-consultant been in business in California? <i>3 yrs or less = 2 pts; 4 yrs = 3 pts; 5 yrs = 4 pts; 6 yrs + = 5 pts</i>				
4	Is Sub-consultant currently a debtor in a bankruptcy case? <i>Yes = 0 pts; No = 3 pts</i>				
5	Was Sub-consultant in bankruptcy in the last 5 years? <i>Yes = 0 pts; No = 3 pts</i>				
6	Has the Sub-consultant operated without Profession Liability insurance in the last 10 years? <i>Yes = 0; No = 3</i>				
7	Has a claim in excess of \$50,000 been filed against Sub-consultant in the last 5 years that was not resolved by change order or contract amendment? <i>5 pts for 0 to 2 instances; 3 pts for 3 instances; 0 pts for any other answer.</i>				
8	Has a claim in excess of \$50,000 been made by Sub-consultant against a project owner in the last 5 years that was not resolved by change order or contract amendment? <i>5 pts for 0 to 2 instances; 3 pts for 3 instances; 0 pts for any other answer.</i>				
9	Has any insurance carrier refused to renew a policy for Sub-consultant in the last 5 years? <i>5 pts for 0 to 2 instances; 3 pts for 3 instances; 0 pts for any other answer</i>				

**Alameda County Fire Training Center Project
CAP21-ACFD-CNTR**

Prequalification Document

Question #	Requirement / Question	Yes	No	Instance	Score
Total for Scored Sub-consultant Questions Minimum Qualifying Score is 30 of 39 total possible points.					

PART III.D Scored Questions for the Sub-Contractors

Scoring table is typical for all Sub-Contractors.

Question #	Requirement / Question	Yes	No	Instance	Score
1	For how many Fire Training Centers or Fire Stations in California has Sub-contractor provided services in the last 8 years? <i>5 pts for 2 or more; 3 pts for 1; 0 pts for 0</i>				
2	How many years has Sub-contractor been in business in California? <i>3 yrs or less = 2 pts; 4 yrs = 3 pts; 5 yrs = 4 pts; 6 yrs + = 5 pts</i>				
3	Is Sub-contractor currently a debtor in a bankruptcy case? <i>Yes =0; No =3</i>				
4	Was Sub-contractor in bankruptcy in the last 5 years? <i>Yes =0; No =3</i>				
5	Has Sub-contractor paid liquidated damages of more than \$50,000 in the last 5 years? <i>5 pts for 0 to 1 projects; 2 projects =3 pts; more than 2 = 0 pts.</i>				
6	Has Sub-contractor been disbarred, disqualified, removed or prevented from bidding on public works projects in the last 5 years? <i>Yes =subtract 5 pts; No =5 pts</i>				
7	Has a claim over \$50,000 been filed against Sub-contractor in the last 5 years that was not resolved by change order or contract amendment? <i>5 pts for 0 or 1 instance; 3 pts for 2 instances; 0 pts for more than 2 instances.</i>				
8	Has a claim of over \$50,000 been made by Sub-contractor against a project owner in the last 5 years that was not resolved by change order or contract amendment? <i>5 pts for 0 or 1 instance; 3 pts for 2 instances; 0 pts for more than 2 instances.</i>				
9	Has any insurance carrier refused to renew Sub-contractor's policy in the last 5 years? <i>5 pts for 0 or 1 instance; 3 pts for 2 instances; 0 pts for more than 2</i>				

Question #	Requirement / Question	Yes	No	Instance	Score
10	Has CAL or federal OSHA cited Sub-contractor for serious, willful or repeated safety violations in the last 5 years? <i>5 pts for 0 or 1 instance; 3 pts for 2 instances; 0 pts for any other answer</i>				
11	Has Sub-contractor been penalized or required to pay back wages or penalties for failure to comply with state prevailing wage laws in the last 5 years? <i>5 pts for 0 to 2 instances; 3 pts for 3 instances; 0 pts for any other answer</i>				
12	Has Sub-contractor been penalized or required to pay back wages or penalties for failure to comply with federal Davis-Bacon prevailing wage requirements in the last 5 years? <i>5 pts for 0 to 2 instances; 3 pts for 3 instances; 0 pts for any other answer</i>				
Total for Scored Sub-contractor Questions Minimum Qualifying Score is 42 of 56 total possible points.					

Summary of Scored Questions for Core Design Build Entity Members

Section	Section Score
Part II A. Essential Requirements For the Design Build Entity as a Whole (Disqualified if score is greater than 0)	
Part II B. Essential Requirements For the General Contractor & Core Subs (Disqualified if score is greater than 0)	
Part II C. Essential Requirements For the Architect & Core Subs (Disqualified if score is greater than 0)	
<i>Essential Requirements Sub-Total</i> <i>Disqualified if Score is greater than 0</i>	
Part III A. Scored Questions for the General Contractor (Minimum qualifying score is 86 points)	
Part III B. Scored Questions for the Architect (Minimum qualifying score is 34 points)	
Part III C. Scored Questions for the Structural Engineer Sub-consultant (Minimum qualifying score is 30 points)	
Part III C. Scored Questions for the Mechanical/Plumbing Engineer Sub-consultant (Minimum qualifying score is 30 points)	
Part III C. Scored Questions for the Electrical Engineer Sub-consultant (Minimum qualifying score is 30 points)	
Part III C. Scored Questions for the Civil Engineer Sub-consultant (Minimum qualifying score is 30 points)	
Part III C. Scored Questions for the Fire, Life-Safety Engineer Sub-consultant (Minimum qualifying score is 30 points)	
Part III D. Scored Questions for the Mechanical Sub-contractor (Minimum qualifying score is 42 points)	
Part III D. Scored Questions for the Electrical Sub-contractor (Minimum qualifying score is 42 points)	
Part III D. Scored Questions for the Plumbing Sub-contractor (Minimum qualifying score is 42 points)	
Part III D. Scored Questions for the Fire Protection Sub-contractor (Minimum qualifying score is 42 points)	
Part III D. Scored Questions for Structural/Framing Sub-contractor (Minimum qualifying score is 42 points)	
Reference Interview Questions: Design-Build General Contractor (Additional available points: 140 points)	
Reference Interview Questions: Design-Build Architect (Additional available points: 130 points)	
Total Score Minimum Qualifying Score is 615 of 903 total possible points	

Attachment 1

Organizational Conflict-of-Interest Policy for Design-Build Projects



June 28, 2019

Honorable Board of Supervisors
County of Alameda
1221 Oak Street, Suite 536
Oakland, California 94612-4305

SUBJECT: ADOPTION OF ORGANIZATIONAL CONFLICT OF INTEREST POLICY
FOR DESIGN-BUILD CONSTRUCTION PROJECTS

Dear Board Members:

RECOMMENDATION:

Adopt the Alameda County Organizational Conflict of Interest Policy for Design-Build Construction Projects per Public Contract Code Section 22162, and incorporate the policy into the Uniform Procurement Manual.

DISCUSSION/SUMMARY:

Organizational conflicts of interest can occur in the design-build procurement process when a person or entity that performs services for a local agency relating to the solicitation of a design-build project seeks to submit a proposal to the County as a design-built entity or join a design-build team, thereby making that person or entity unable or potentially unable to render impartial assistance or advice to the County, impairing the objectivity of that person or entity in performing the contract work, or giving that person or entity an unfair competitive advantage.

Public Contract Code (PCC) Section 22162 requires local agencies to establish an Organizational Conflict of Interest policy that applies to Design-Build construction projects procured pursuant to PCC Section 22160 et seq. This policy will apply countywide to any future design-build projects.

Upon adoption, the Alameda County Conflict of Interest Policy will be posted on the Alameda County General Services Agency-Procurement website under 'Doing Business With Us' link.

FINANCING:

Adoption of the Conflict of Interest Policy will result in no net County cost.

VISION 2026 GOAL:

The adoption of this policy advances the 10X Goal pathways of **Employment for All** in support of our shared vision of a **Prosperous and Vibrant Economy**.

Respectfully submitted,

A handwritten signature in blue ink, appearing to read "Willie A. Hopkins, Jr.", with a long, sweeping horizontal stroke extending to the right.

Willie A. Hopkins, Jr.
Director, General Services Agency

Attachment

cc: County Administrator
Auditor-Controller
County Counsel

ALAMEDA COUNTY

ORGANIZATIONAL CONFLICT-OF-INTEREST POLICY
FOR DESIGN-BUILD PROJECTS**PURPOSE**

Public Contract Code Section 22162 requires local agencies to establish an organizational conflict-of-interest policy that applies to design-build projects procured pursuant to Public Contract Code section 22160 et seq. Organizational conflicts of interest can occur in the design-build procurement process when a person or entity that performs services for a local agency relating to the solicitation of a design-build project seeks to submit a proposal to the County as a design-build entity or join a design-build team, thereby making that person or entity unable or potentially unable to render impartial assistance or advice to the County, impairing the objectivity of that person or entity in performing the contract work, or giving that person or entity an unfair competitive advantage.

POLICY**A. Defined Terms.**

1. "Design-Build" means a project delivery process in which both the design and construction of a project are procured from a single entity.
2. "Design-Build Entity" means a corporation, limited liability company, partnership, joint venture, or other legal entity that is able to provide appropriately licensed contracting, architectural, and engineering services as needed pursuant to a Design-Build contract.
3. "Design-Build Team" means a Design-Build Entity and the individuals and other entities identified by the Design-Build Entity as members of its team. Members of a Design-Build Team include the general contractor and, if utilized in the design of the project, all electrical, mechanical, and plumbing contractors.
4. "Proposer" means any consultant or contractor that seeks to submit a proposal to the County as a Design-Build Entity or to join a Design-Build Team.

B. Organizational Conflicts of Interest.

1. A Proposer may not have any organizational conflicts of interest.
2. "Organizational conflicts of interest" are circumstances arising out of a consultant's or contractor's existing or past activities, business or financial interests, familial relationships, contractual relationships, and/or organizational structure (e.g., parent entities and their subsidiaries and affiliates) that results in: (i) the impairment or potential impairment of a consultant's or contractor's ability to render impartial

assistance or advice to the County or of its objectivity in performing work for the County; (ii) an unfair competitive advantage for any bidder or Proposer with respect to a County procurement; or (iii) a perception or appearance of impropriety with respect to any of the County's procurements or contracts or a perception or appearance of unfair competitive advantage with respect to a procurement by the County (regardless of whether any such perception is accurate).

3. An organizational conflict of interest exists in the following instances:

- a. A Proposer is the County's general engineering or architectural consultant to the Design-Build project, except that a subconsultant to the general engineering or architectural consultant that has not yet performed work on the contract to provide services for the design-build project may participate as a proposer or join a Design-Build Team if it terminates the agreement to provide work and provides no work for the County's general engineering or architectural consultant on the Design-Build project.
- b. A Proposer has assisted or is assisting the County in the management of the Design-Build project, including the preparation of the request for proposals, evaluation criteria, or any other aspect of the procurement.
- c. A Proposer has conducted preliminary design services for the Design-Build project, such as conceptual layouts, preliminary design, or preparation of bridging documents.
- d. A Proposer performed design work related to the Design-Build project for other stakeholders in the Design-Built project.
- e. A Proposer performed design work on a previous contract that specifically excludes it from participating as a proposer or joining a Design-Build Team for the Design-Build project.
- f. A Proposer is under contract with any other entity or stakeholder to perform oversight of the Design-Build project.
- g. A Proposer has obtained advice from, or discussed any aspect relating to the Design-Build project or procurement of the Design-Build project with, any person or entity with an organizational conflict of interest, including, but not limited to, the consultants of any entity that have provided technical support on the Design-Build project.
- h. Any circumstances that would violate California Government Code section 1090, et seq.

C. Obligations of Proposers.

- 1. Proposers shall make a full written disclosure to the County of the facts and circumstances regarding an organizational conflict of interest or a potential organizational conflict of interest, and shall have a continuing obligation to do so until they are no longer Proposers.

2. Proposers shall disclose all relevant facts relating to past, present or planned interests of the Proposer's Design-Build Team (including the Proposer, Proposer's proposed consultants and subconsultants and subcontractors and their respective directors and key personnel) that may result in, or could be viewed as, an organizational conflict of interest in connection with any Design-Build project procurement, including present or planned contractual or employment relationships with any current County employee.
3. Proposers shall disclose in the response documents to a Design-Build request for qualifications and request for proposals, all the work performed in relation to the particular proposed Design-Build project.
4. If a Proposer determines that a conflict of interest or potential conflict of interest exists, it must disclose the conflict or potential conflict of interest to the County. The disclosure may not necessarily disqualify a Proposer from being awarded a contract. The Proposer shall propose measures to avoid, neutralize, or mitigate all conflicts or potential conflicts. The County, in its sole discretion, shall determine whether the proposed measures are sufficient to overcome the conflict or potential conflict and whether the Proposer may continue with the procurement process. The County has the right to cancel or amend a resulting Design-Build project contract if the successful Proposer failed to disclose a conflict or potential conflict that it knew or should have known about, or if the Proposer provided information in its disclosure that is false or misleading.
5. For other conflicts or potential conflicts not mentioned specifically above, such as conflicts involving employees changing companies, mergers and acquisitions of firms, property ownership, business arrangements, and financial interests, a Proposer shall disclose and address any organizational conflicts of interest or potential organizational conflicts of interest when participating in or joining a Design-Build Team. The County will determine if a conflict of interest exists.

D. Obligations After Contract Award.

The successful Proposer to whom a contract is awarded ("Contractor") has an ongoing obligation to monitor and disclose its conflicts or potential conflicts of interest. The County has the right to ongoing enforcement of this policy. If an organizational conflict of interest is discovered after contract award, the Contractor must make an immediate and full written disclosure to the County that includes a description of the action that the Contractor has taken or proposes to take to avoid or mitigate the conflict. If an organizational conflict of interest is determined to exist and the Contractor was aware of an organizational conflict of interest prior to award of the contract and did not disclose the conflict, the County may terminate the contract. If the contract is terminated, the County assumes no obligations, responsibilities and liabilities to reimburse all or part of the costs incurred or alleged to have been incurred by Contractor and is entitled to pursue any available legal remedies.

E. Incorporation by Reference.

This policy shall be incorporated by reference into and included as part of all County Design-Build project requests for qualifications and requests for proposals, and all County Design-Built contracts.

APPROVED BY THE ALAMEDA COUNTY BOARD OF SUPERVISORS ON