



COUNTY OF ALAMEDA

ADDENDUM No. 1

to

RFP No. 902602

for

BOILER MAINTENANCE, REPAIRS, AND SERVICES

This RFP Addendum has been electronically issued to potential bidders via e-mail. E-mail addresses used are those in the County's Small Local Emerging Business (SLEB) Vendor Database or from other sources. If you have registered or are certified as a SLEB, please ensure that the complete and accurate e-mail address is noted and kept updated in the SLEB Vendor Database. This RFP Addendum will also be posted on the GSA Contracting Opportunities website located at [Alameda County Current Contracting Opportunities](#).

**** BIDDERS MUST USE REVISED EXCEL BID FORM WHEN SUBMITTING
BID RESPONSE****



Alameda County is committed to reducing environmental impacts across our entire supply chain. If printing this document, please print only what you need, print double-sided, and use recycled-content paper.

**County of Alameda, General Services Agency – Procurement
RFP No. 902602, Addendum No. 1**

The following Section has been modified or revised as shown below. Changes made to the original RFP document are in **bold** print and **highlighted**, and deletions made have a **strike through**.

Page 9 of the RFP, Section D (SPECIFIC REQUIREMENT), Item 4, is revised as follows:

List and type of Boilers and locations:

Item No.	Location	Make	Cat/Model #	Output Btu/Hr	Serial No.
1	125 12 th St. Oakland #1	Raypak	E825T E 825 T	825,000	0482101183
2	125 12 th St. Oakland #2	Raypak	48X	480,000	1224R 8
3	165 13 th St. Oakland	Ajax	WG-1250	1,250,000	161461R
4	470 27 th St. Oakland #1	Laars	299765 MT2H0500NACK1CXN	500,000	C 13 249765
5	470 27 th St. Oakland #2	Laars	252071 MT2H0500NACK1CXN	500,000	C 13 252071
6	661 Washington St. Oakland #1	Lochinvar	PBN3500	3,045,000	2140 126297291
7	661 Washington St. Oakland #2	Lochinvar	PBN3500	3,045,000	2140 126297292
8	661 Washington St. Oakland #3	Lochinvar	PBN3500	3,045,000	2140 126297294
9	661 Washington St. Oakland #4	Lochinvar	PBN3500	3,045,000	2140 126297293
10	661 Washington St. Oakland #5	Lochinvar	PBN3500	3,045,000	2140 126297290
11	1106 Madison St. Oakland	Raypak	H3-1083	1,063,000	9902156688
12	1111 Jackson St. Oakland #1	Raypak	H9-2072	2,000,000	0011176888
13	1111 Jackson St. Oakland #2	Raypak	H9-2072	2,000,000	0011176887
14	1131 Harbor Bay Pkwy. # 1 Alameda	Laars	NTH1000XX1 NTH1000NXX1	942,000	G16 371995
15	1131 Harbor Bay Pkwy. # 2 Alameda	Laars	NTH1000XX1 NTH1000NXX1	942,000	G16 371996
16	1225 Fallon St. Oakland #1	Cleaver Brooks	FLX-700-450-15ST	1,125,000	08038-1-1
17	1225 Fallon St. Oakland #2	Cleaver Brooks	FLE-700-450-15ST	1,500,000	BT-8943
18	1325 Portland Ave. Albany	United States Radiator Corporation	0282	Unknown (Name plate missing)	82364
19	1401 Lakeside Dr. Oakland #1	Lochinvar	PBN1701	1,700,000	1850 112968509
20	1401 Lakeside Dr. Oakland #2	Lochinvar	PBN2000	2,000,000	K06H00193209
21	2000 San Pablo Ave. Oakland	Ajax	WRNG-2100	1,743,000	65206
22	7001 Oakport St. Oakland	Ajax	WNG2000-W	1,600,000	91103
23	8201 Edgewater Dr. Oakland	Laars	PNCH0750N ACK3CJN	638,000	C21 308135
24	8477 Enterprise Way, Oakland #1	Lochinvar	FCB1000N	961,000	2438 140669572
25	8477 Enterprise Way, Oakland #2	Lochinvar	FCB1000N	961,000	2439 14685847

County of Alameda, General Services Agency – Procurement
RFP No. 902602, Addendum No. 1

Page 8 of the RFP, Section D (SPECIFIC REQUIREMENT), Item P. (24), is revised as follows:

(24) Provide a written condition report and proposals that include findings and recommendations for any needed repairs. The County will review both the service report and the proposal and determine whether repair is needed.

Page 8 of the RFP, Section D (SPECIFIC REQUIREMENT), Item P. (27), has been added:

(27) Perform the annual preventive maintenance services during the months of July and August.

**County of Alameda, General Services Agency – Procurement
RFP No. 902602, Addendum No. 1**

BID FORM

Instructions: Bidder must use the separate County-provided **REVISED** Excel Bid Form.

COST MUST BE SUBMITTED AS REQUESTED ON THE COUNTY-PROVIDED **REVISED EXCEL BID FORM. NO ALTERATIONS OR CHANGES OF ANY KIND ARE PERMITTED.**

Bid proposals that do not comply may be rejected.

The cost quoted must include all taxes and all other charges, including travel expenses, truck/trip fees, parts, materials, equipment rental, waste containment, haul-away and disposal fees. The price quoted will be the maximum cost the County will pay for the term of any contract resulting from this RFP.

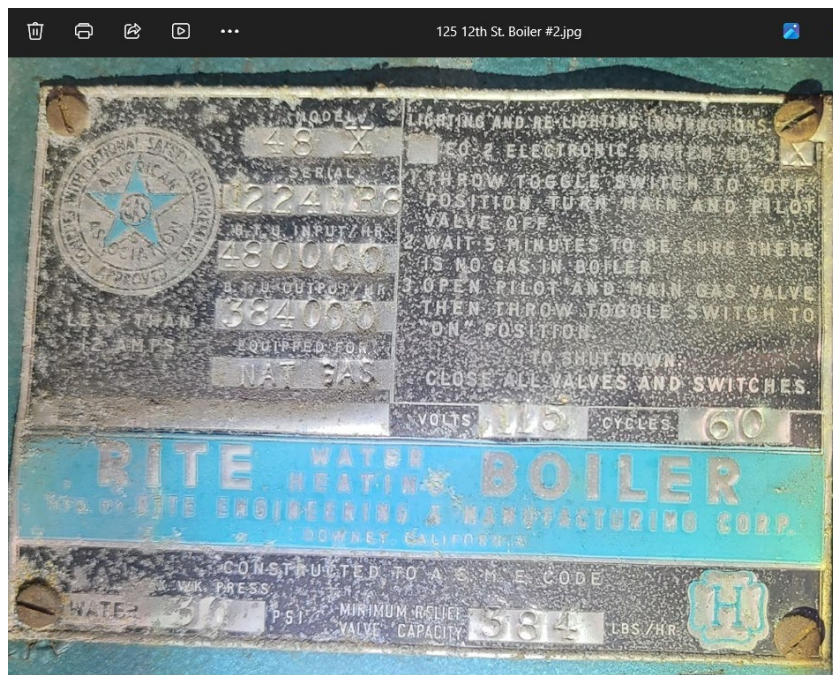
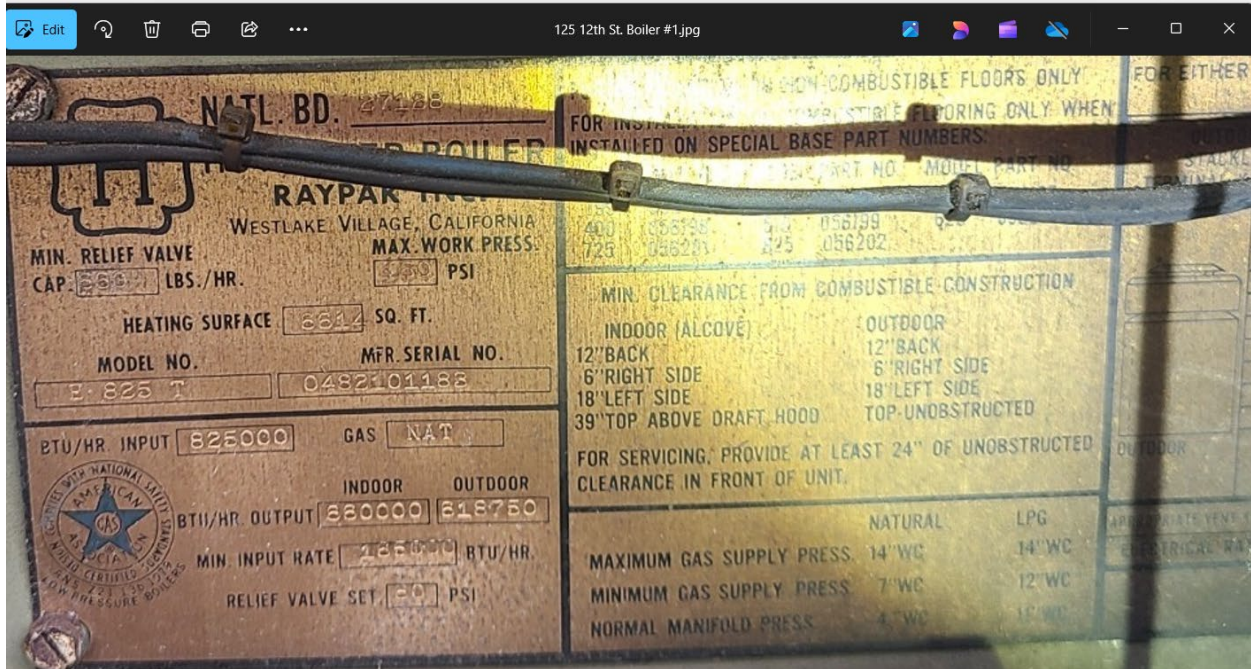
Quantities listed on the **REVISED Excel Bid Form** are estimates only; they are not to be construed as a commitment of the County to purchase that quantity. No minimum or maximum is guaranteed or implied. The cost quoted will be the price of the items identified, regardless of the quantity purchased.

Bid pricing on all line items is required. If the services are to be provided to the County at no cost, enter “0” in the Annual Maintenance Service Cost Yearly and hourly rate cell, do not leave the cell blank. If there are any line items that are not priced, the bid may be considered a partial bid and disqualified. **Partial bids are not acceptable.**

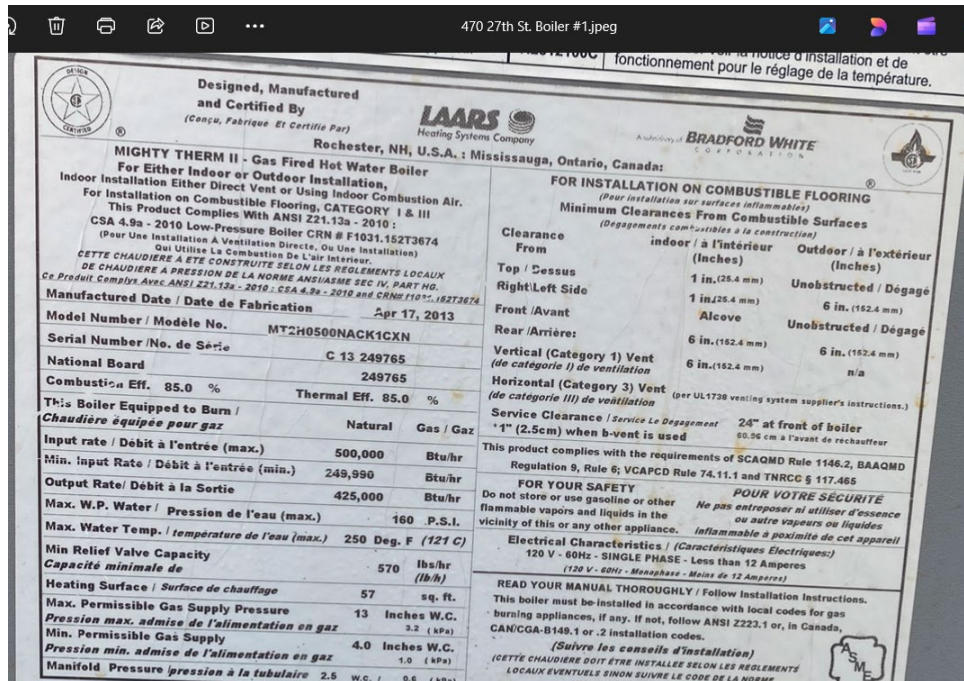
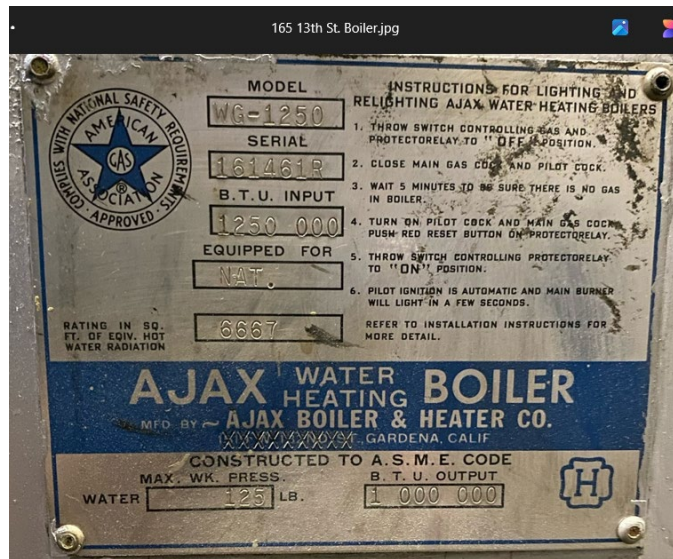
Prevailing wages apply to this RFP. Refer to Page 21, Section M (PRICING), Item 9.

By submission through the Alameda County [EZSourcing Supplier Portal](#), Bidder certifies to County that all representations, certifications, and statements made by Bidder, as set forth in each entry in the Alameda County [EZSourcing Supplier Portal](#) and attachments are true and correct and are made under penalty of perjury pursuant to the laws of California.

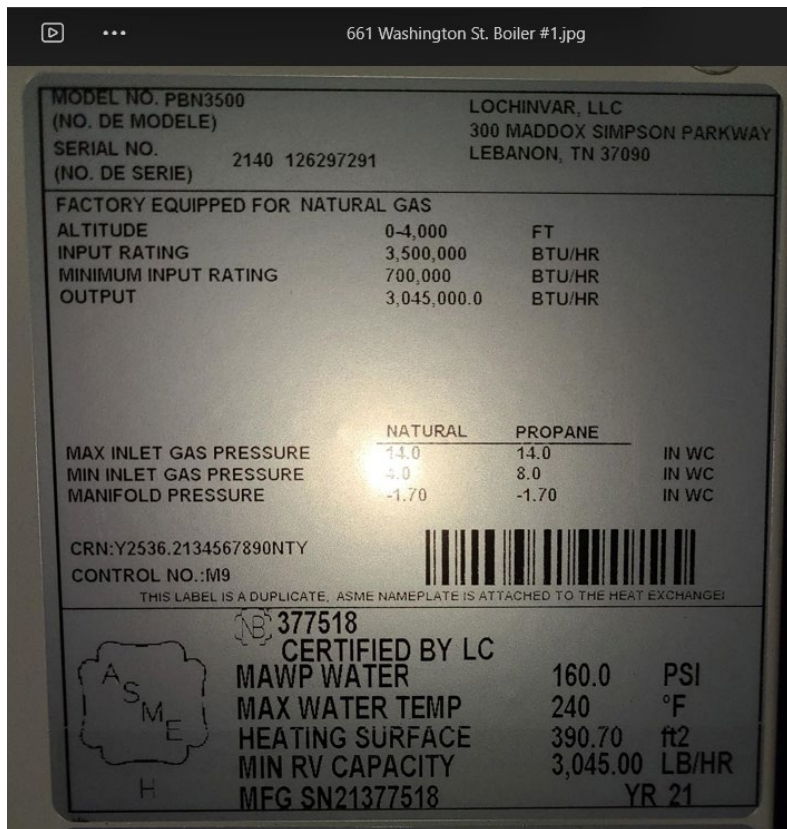
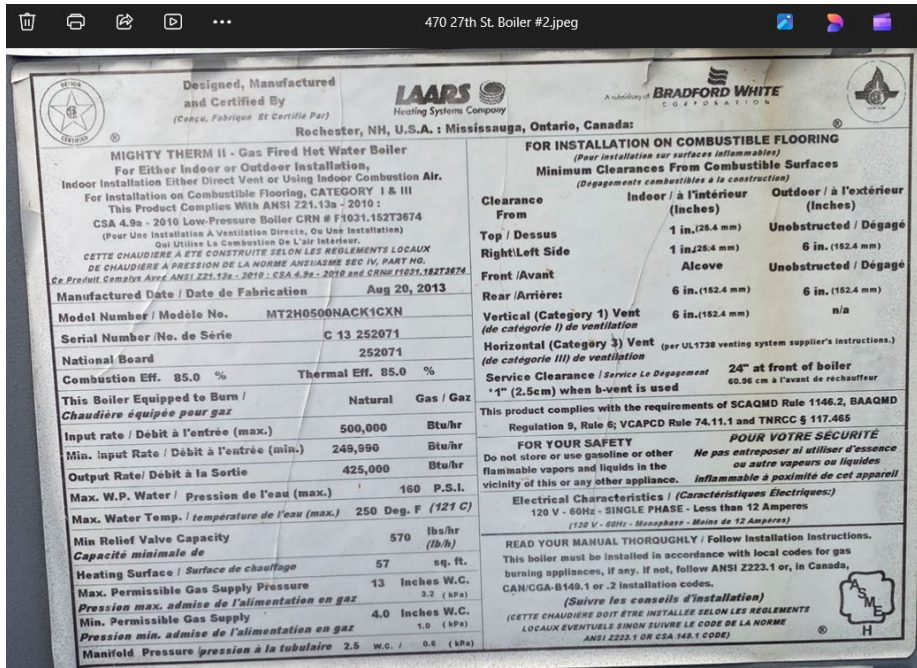
Attachment A



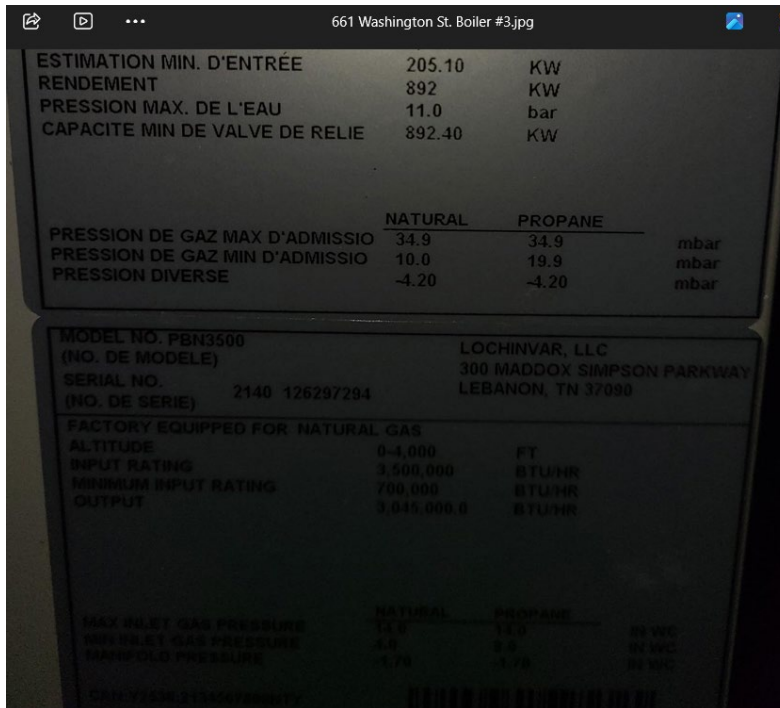
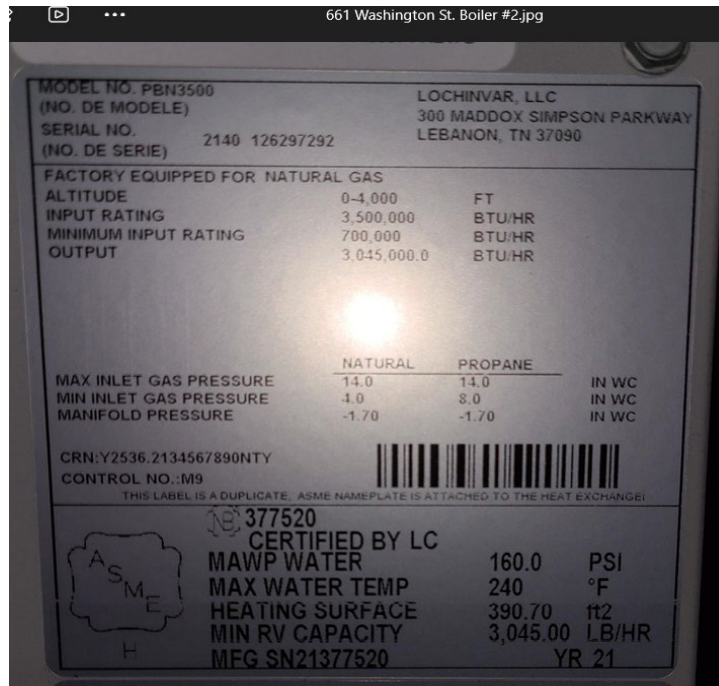
County of Alameda, General Services Agency – Procurement
RFP No. 902602, Addendum No. 1



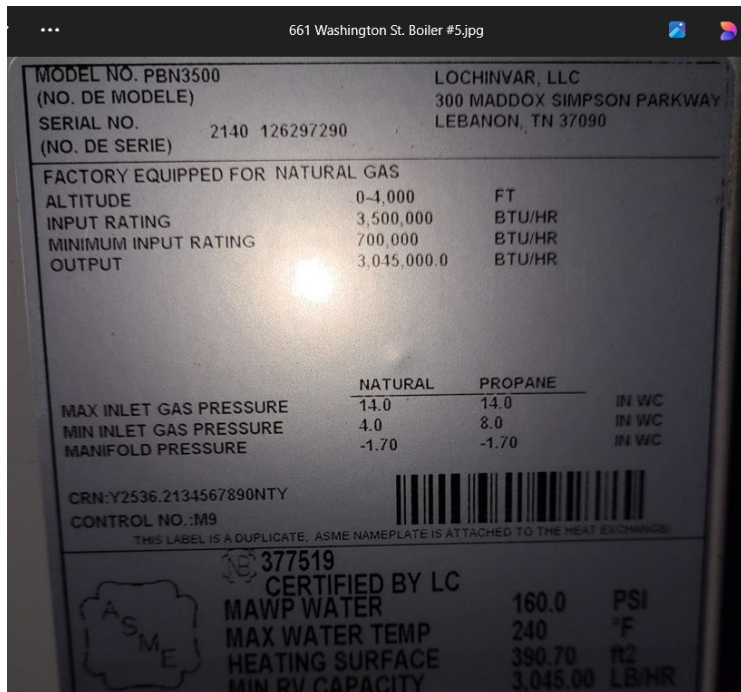
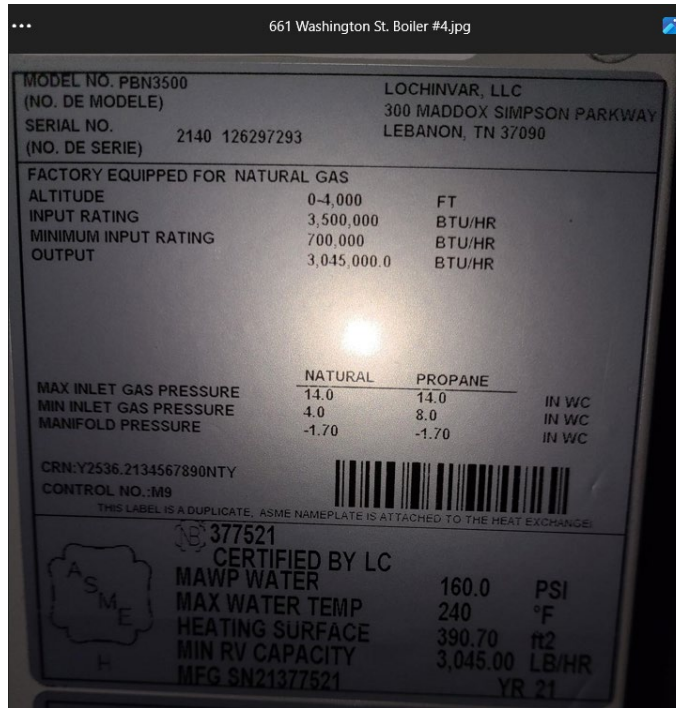
**County of Alameda, General Services Agency – Procurement
RFP No. 902602, Addendum No. 1**



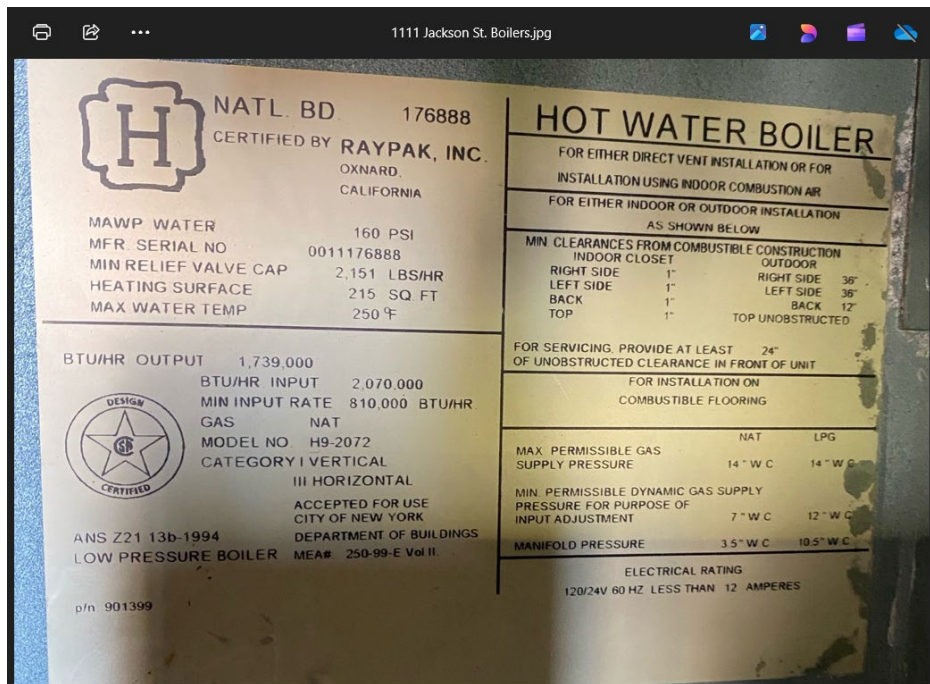
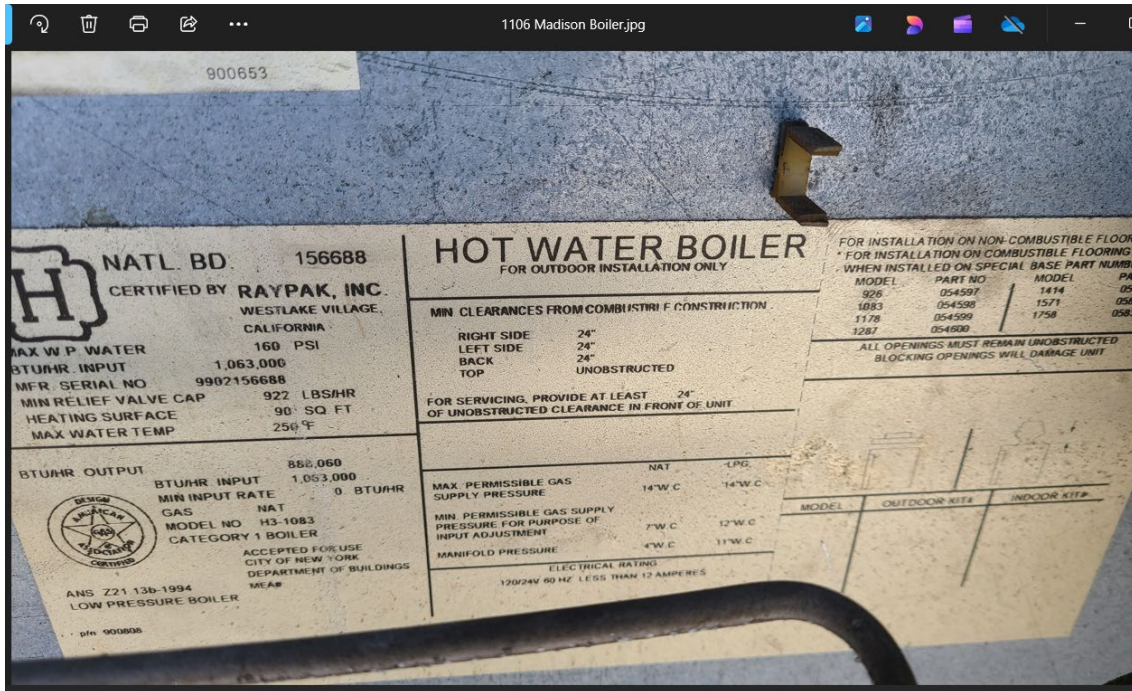
**County of Alameda, General Services Agency – Procurement
RFP No. 902602, Addendum No. 1**



**County of Alameda, General Services Agency – Procurement
RFP No. 902602, Addendum No. 1**



**County of Alameda, General Services Agency – Procurement
RFP No. 902602, Addendum No. 1**



Please note: Above is the only nameplate present for the 2 boilers at 1111 Jackson St. The model #s are the same. The serial #s are 0011176887 & 0011176888.

County of Alameda, General Services Agency – Procurement
RFP No. 902602, Addendum No. 1

1131 Harbor Bay Boiler #1.jpg

Designed, Manufactured and Certified By
(Conçu, Fabriqué Et Certifié Par)

LAARS
Heating Systems Company
Rochester, NH, U.S.A. • Mississauga, Ontario, Canada

A subsidiary of **BRADFORD WHITE CORPORATION**

AHRI CERTIFIED™
www.ahrifactory.org

NEO THERM Gas Fired Hot Water Boiler
FOR EITHER INDOOR OR OUTDOOR INSTALLATION
LOW PRESSURE BOILER, CATEGORY IV
ANSI Z21.13a - 2010 • CSA 4.9a - 2010 CRN # M8027.5C
CHAUDIÈRE À GAZ AVEC PRODUCTION D'EAU CHAUDE SANITAIRE
Pour installation intérieure ou extérieure
ANSI Z21.13a - 2010 • CSA 4.9a - 2010 CRN # M8027.5C
CHAUDIÈRE DE BASSE PRESSION, CATEGORIE IV

Date of Manufacture / Date de Fabrication: Aug 31, 2016

Model / Modèle: NTH1000NXX1

Serial Number / No. De Série: G16 371995 National Board 371995

This Boiler Equipped to Burn / Chaudière équipée pour gaz: NATURAL Gas / Gaz

Input / Débit à l'entrée (max.): 999,900 Btu/Hr

Min. Input Rate / Débit à l'entrée (min.): 100,000 Btu/Hr

Output / Débit à la Sortie: 942,000 Btu/Hr

Thermal Efficiency 94.2 % Combustion Efficiency 94.2 %

Net AHRI Water Rating 619 MBH Max W.P. Water / Pression de l'eau (max.): 160 P.S.I.

Maximum Water Temperature / Température de l'eau (max.): 210 Deg. F / 98 C

Minimum Relief Valve Capacity / Capacité minimale de: 1,000 Lbs./hr lb/h

Heating Surface / Surface de chauffage: 76.2 sq. ft.

Maximum Permissible Gas Supply Pressure / Pression max. admise de l'alimentation en gaz: 13 " W.C. 3.2 (kPa)

Minimum Permissible Gas Supply Pressure / Pression min. admise de l'alimentation en gaz: 4 " W.C. 1.0 (kPa)

Manifold Pressure / Pression à la tubulure: " W.C. (kPa)

FOR INSTALLATION ON COMBUSTIBLE FLOORING
(Installer seulement sur un plancher combustible)
Minimum Clearances From Combustible Surfaces
(DÉGAGEMENTS COMBUSTIBLES À LA CONSTRUCTION)

Clearance From / dégagement avec	Indoor / D'intérieur
Top / Dessus	1 in. (25.4 mm)
Water Connection Side / Côte De Raccordement De l'Eau	1 in. (25.4 mm)
Opposite Side / Côte Opposé	1 in. (25.4 mm)
Front / Avant	1 in. (25.4 mm)
Rear / Arrière:	1 in. (25.4 mm)
Vent Pipe	Per venting system supplier's instructions

This product complies with the requirements of SCAQMD Rule 1146.2; BAAQMD Regulation 9, Rule 6; VCAPCD Rule 74.11.1 and TNRC § 117.465

FOR YOUR SAFETY
Do not store or use gasoline or other flammable vapors and liquids in the vicinity of this or any other appliance.

POUR VOTRE SÉCURITÉ
Ne pas entreposer ni utiliser d'essence ou autre vapeurs ou liquides inflammables à proximité de cet appareil.

READ YOUR MANUAL THOROUGHLY
FOR EITHER DIRECT VENT INSTALLATION OR FOR INSTALLATION USING INDOOR COMBUSTION AIR, CONSULT LAARS FACTORY, AND/OR INSTALLATION INSTRUCTIONS FOR DETAILS. FOLLOW UL1738 VENTING SYSTEM SUPPLIER INSTRUCTIONS FOR RANGES OF WALL THICKNESS REQUIRED FOR VENT TERMINALS.

AVERTISSEMENT
SUIVRE LES INSTRUCTIONS D'INSTALLATION POUR INSTALLATION AVEC EVACUATION DIRECTE OU AVEC AIR COMBURANT. L'INSTALLATION ET L'ENTRETIEN DOIVENT ÊTRE ASSURÉS PAR UN INSTALLATEUR OU UN SERVICE D'ENTRETIEN QUALIFIÉ OU PAR LE FOURNISSEUR DE GAZ.

Electrical Characteristics
(Caractéristiques Electriques):
115 V • 60 Hz • 1 PH • 30 Amperes

For Pump Electrical Characteristics, see the rating plate on the pump

" This appliance must be installed in accordance with the National Fuel Gas Code, ANSI Z223.1/NFPA 54 and/or CSA B149.1, The Natural Gas and Propane Installation Code, and with the requirements of the authority having jurisdiction."

(CETTE CHAUDIÈRE DOIT ÊTRE INSTALLÉE SELON LES RÉGLEMENTS LOCAUX ÉVENTUELS SINON SUIVRE LE CODE DE LA NORME ANSI Z223.1 NFPA 54 OR CSA 149.1 CODE).

1131 Harbor Bay Boiler #2.jpg

Designed, Manufactured and Certified By
(Conçu, Fabriqué Et Certifié Par)

LAARS
Heating Systems Company
Rochester, NH, U.S.A. • Mississauga, Ontario, Canada

A subsidiary of **BRADFORD WHITE CORPORATION**

AHRI CERTIFIED™
www.ahrifactory.org

NEO THERM Gas Fired Hot Water Boiler
FOR EITHER INDOOR OR OUTDOOR INSTALLATION
LOW PRESSURE BOILER, CATEGORY IV
ANSI Z21.13a - 2010 • CSA 4.9a - 2010 CRN # M8027.5C
CHAUDIÈRE À GAZ AVEC PRODUCTION D'EAU CHAUDE SANITAIRE
Pour installation intérieure ou extérieure
ANSI Z21.13a - 2010 • CSA 4.9a - 2010 CRN # M8027.5C
CHAUDIÈRE DE BASSE PRESSION, CATEGORIE IV

Date of Manufacture / Date de Fabrication: Aug 31, 2016

Model / Modèle: NTH1000NXX1

Serial Number / No. De Série: G16 371996 National Board 371996

This Boiler Equipped to Burn / Chaudière équipée pour gaz: NATURAL Gas / Gaz

Input / Débit à l'entrée (max.): 999,900 Btu/Hr

Min. Input Rate / Débit à l'entrée (min.): 100,000 Btu/Hr

Output / Débit à la Sortie: 942,000 Btu/Hr

Thermal Efficiency 94.2 % Combustion Efficiency 94.2 %

Net AHRI Water Rating 619 MBH Max W.P. Water / Pression de l'eau (max.): 160 P.S.I.

Maximum Water Temperature / Température de l'eau (max.): 210 Deg. F / 98 C

Minimum Relief Valve Capacity / Capacité minimale de: 1,000 Lbs./hr lb/h

Heating Surface / Surface de chauffage: 76.2 sq. ft.

Maximum Permissible Gas Supply Pressure / Pression max. admise de l'alimentation en gaz: 13 " W.C. 3.2 (kPa)

Minimum Permissible Gas Supply Pressure / Pression min. admise de l'alimentation en gaz: 4 " W.C. 1.0 (kPa)

Manifold Pressure / Pression à la tubulure: " W.C. (kPa)

FOR INSTALLATION ON COMBUSTIBLE FLOORING
(Installer seulement sur un plancher combustible)
Minimum Clearances From Combustible Surfaces
(DÉGAGEMENTS COMBUSTIBLES À LA CONSTRUCTION)

Clearance From / dégagement avec	Indoor / D'intérieur
Top / Dessus	1 in. (25.4 mm)
Water Connection Side / Côte De Raccordement De l'Eau	1 in. (25.4 mm)
Opposite Side / Côte Opposé	1 in. (25.4 mm)
Front / Avant	1 in. (25.4 mm)
Rear / Arrière:	1 in. (25.4 mm)
Vent Pipe	Per venting system supplier's instructions

This product complies with the requirements of SCAQMD Rule 1146.2; BAAQMD Regulation 9, Rule 6; VCAPCD Rule 74.11.1 and TNRC § 117.465

FOR YOUR SAFETY
Do not store or use gasoline or other flammable vapors and liquids in the vicinity of this or any other appliance.

POUR VOTRE SÉCURITÉ
Ne pas entreposer ni utiliser d'essence ou autre vapeurs ou liquides inflammables à proximité de cet appareil.

READ YOUR MANUAL THOROUGHLY
FOR EITHER DIRECT VENT INSTALLATION OR FOR INSTALLATION USING INDOOR COMBUSTION AIR, CONSULT LAARS FACTORY, AND/OR INSTALLATION INSTRUCTIONS FOR DETAILS. FOLLOW UL1738 VENTING SYSTEM SUPPLIER INSTRUCTIONS FOR RANGES OF WALL THICKNESS REQUIRED FOR VENT TERMINALS.

AVERTISSEMENT
SUIVRE LES INSTRUCTIONS D'INSTALLATION POUR INSTALLATION AVEC EVACUATION DIRECTE OU AVEC AIR COMBURANT. L'INSTALLATION ET L'ENTRETIEN DOIVENT ÊTRE ASSURÉS PAR UN INSTALLATEUR OU UN SERVICE D'ENTRETIEN QUALIFIÉ OU PAR LE FOURNISSEUR DE GAZ.

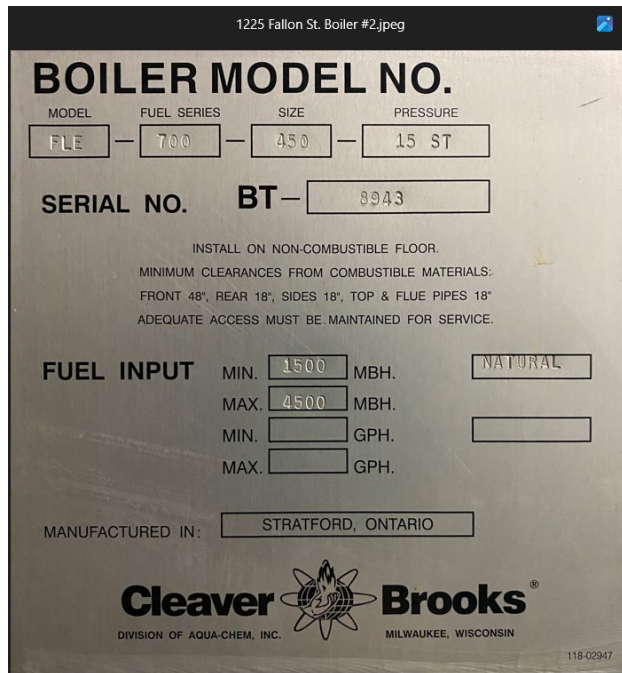
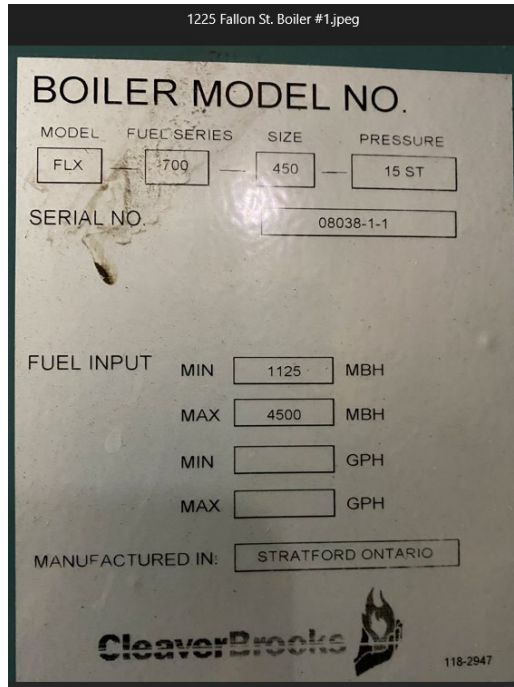
Electrical Characteristics
(Caractéristiques Electriques):
115 V • 60 Hz • 1 PH • 30 Amperes

For Pump Electrical Characteristics, see the rating plate on the pump

" This appliance must be installed in accordance with the National Fuel Gas Code, ANSI Z223.1/NFPA 54 and/or CSA B149.1, The Natural Gas and Propane Installation Code, and with the requirements of the authority having jurisdiction."

(CETTE CHAUDIÈRE DOIT ÊTRE INSTALLÉE SELON LES RÉGLEMENTS LOCAUX ÉVENTUELS SINON SUIVRE LE CODE DE LA NORME ANSI Z223.1 NFPA 54 OR CSA 149.1 CODE).

County of Alameda, General Services Agency – Procurement
RFP No. 902602, Addendum No. 1

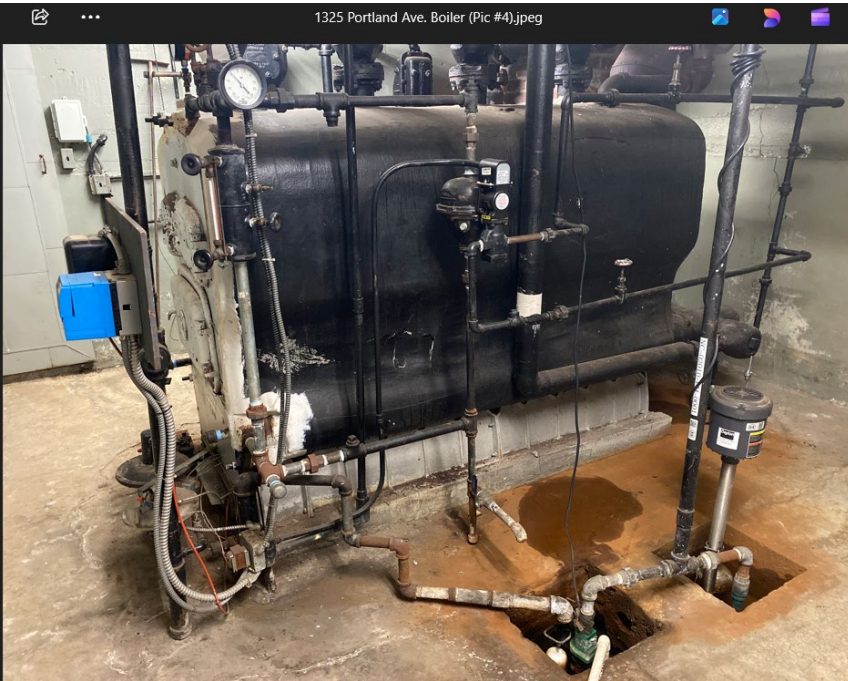
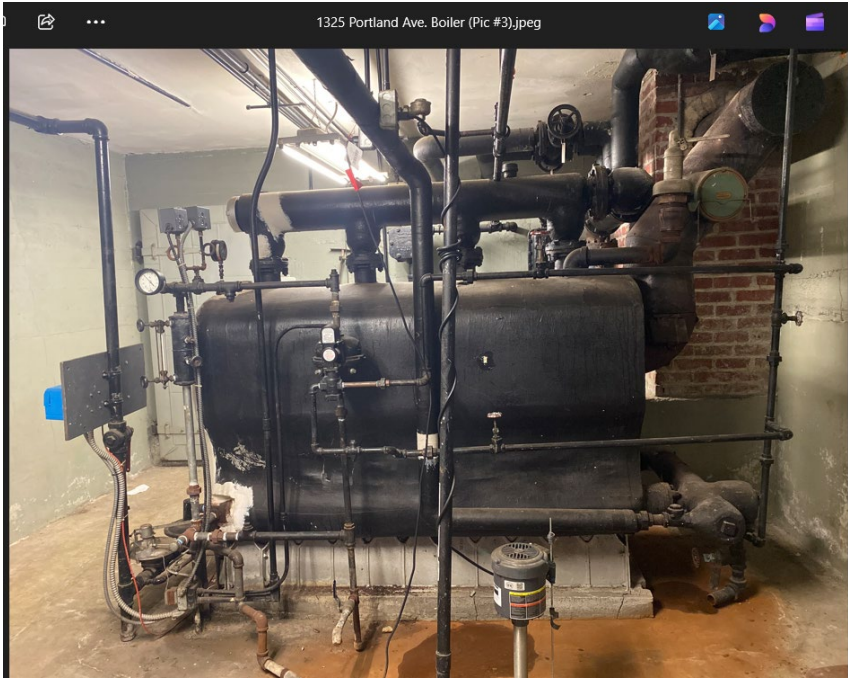


County of Alameda, General Services Agency – Procurement
RFP No. 902602, Addendum No. 1

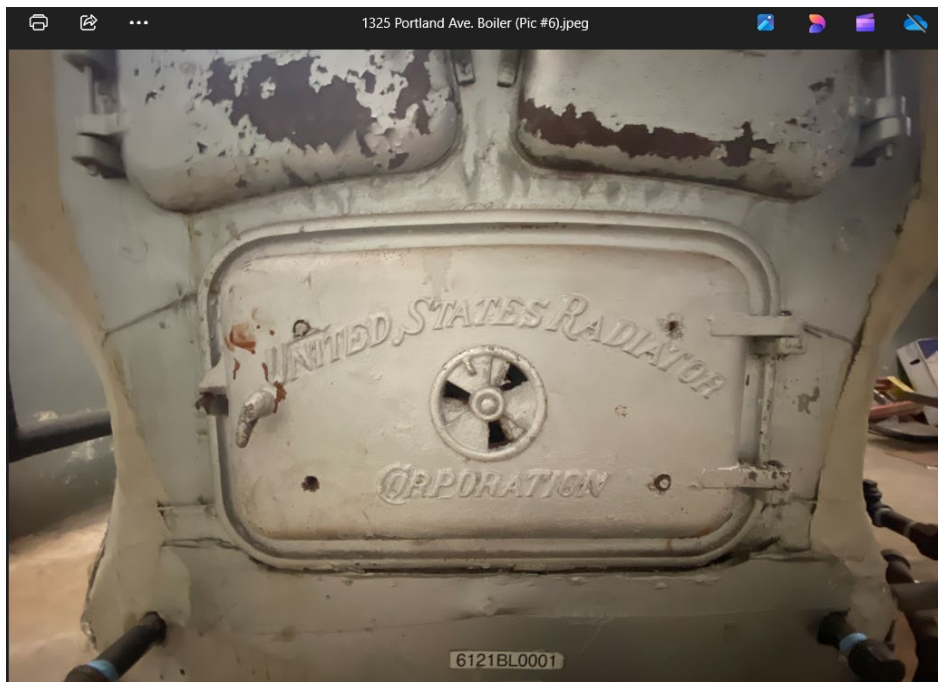
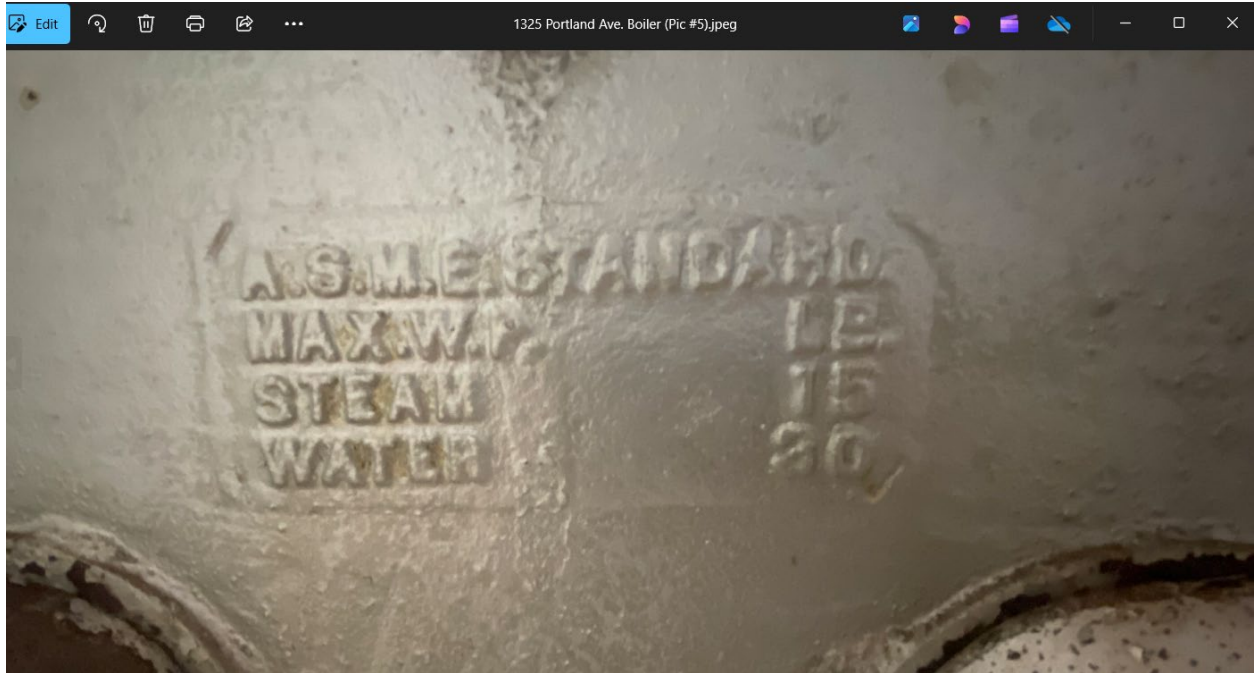
1325 Portland Ave. Albany: There is no comprehensive nameplate on this boiler so please see the following photos:



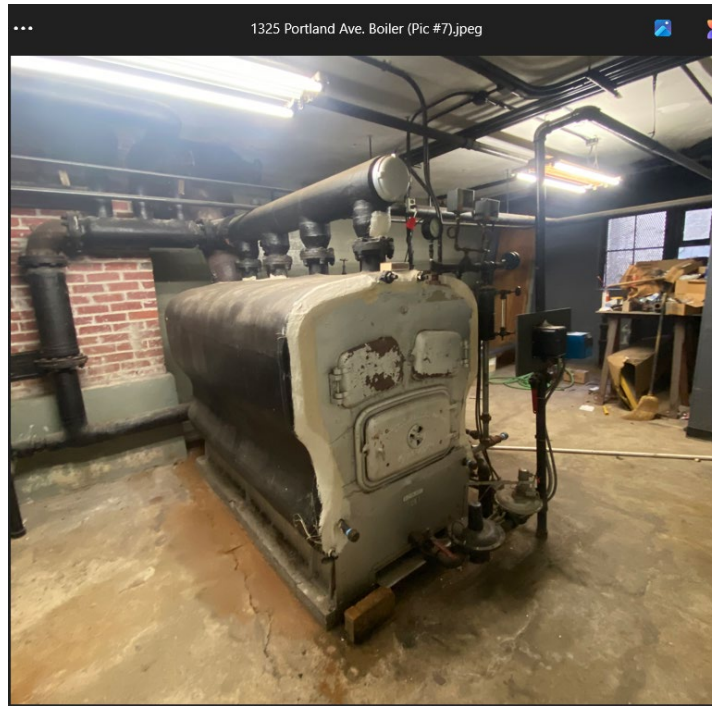
**County of Alameda, General Services Agency – Procurement
RFP No. 902602, Addendum No. 1**



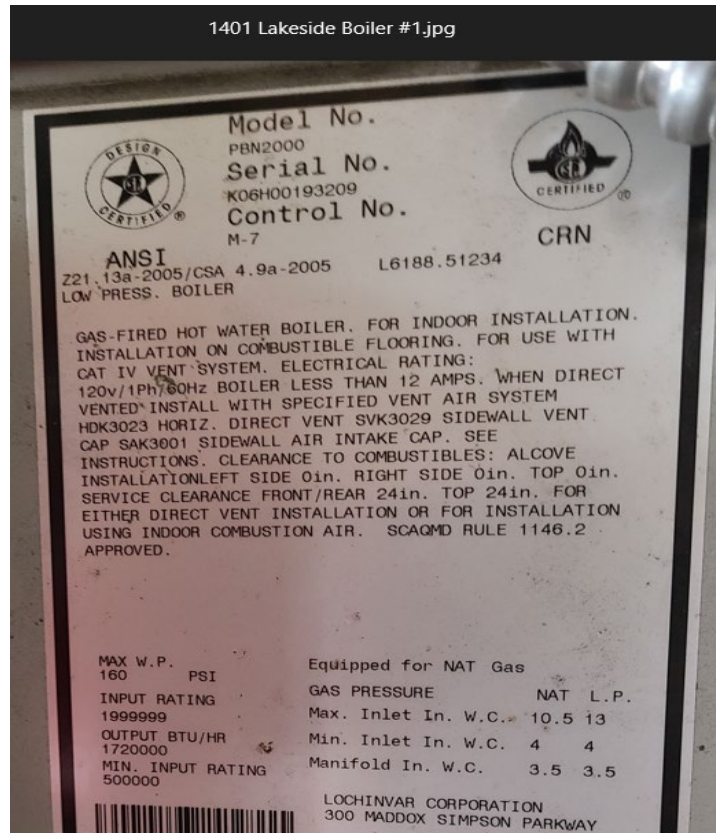
County of Alameda, General Services Agency – Procurement
RFP No. 902602, Addendum No. 1



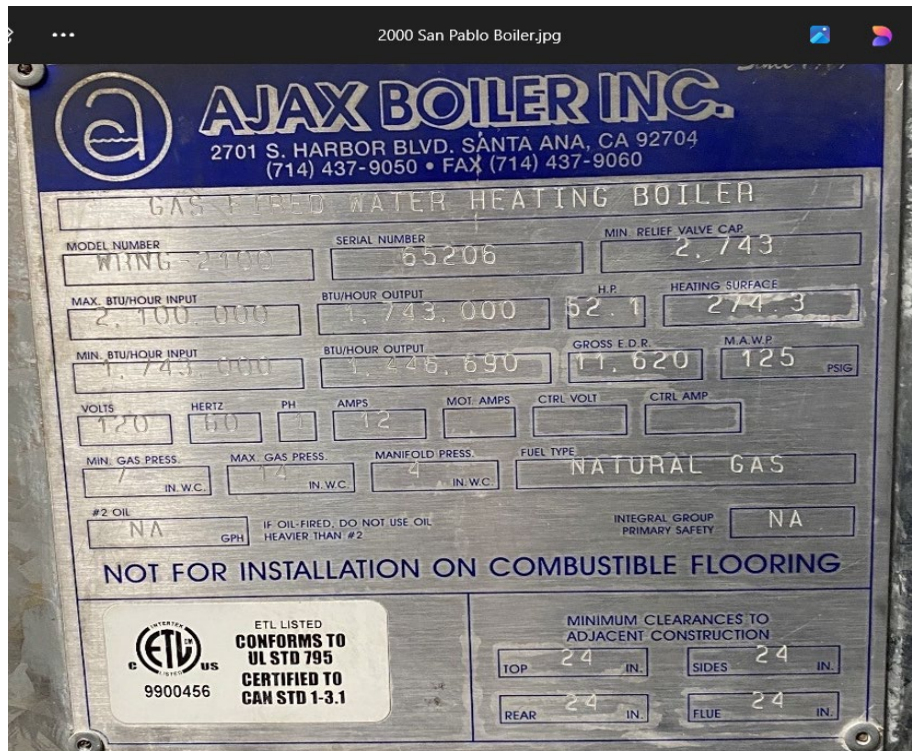
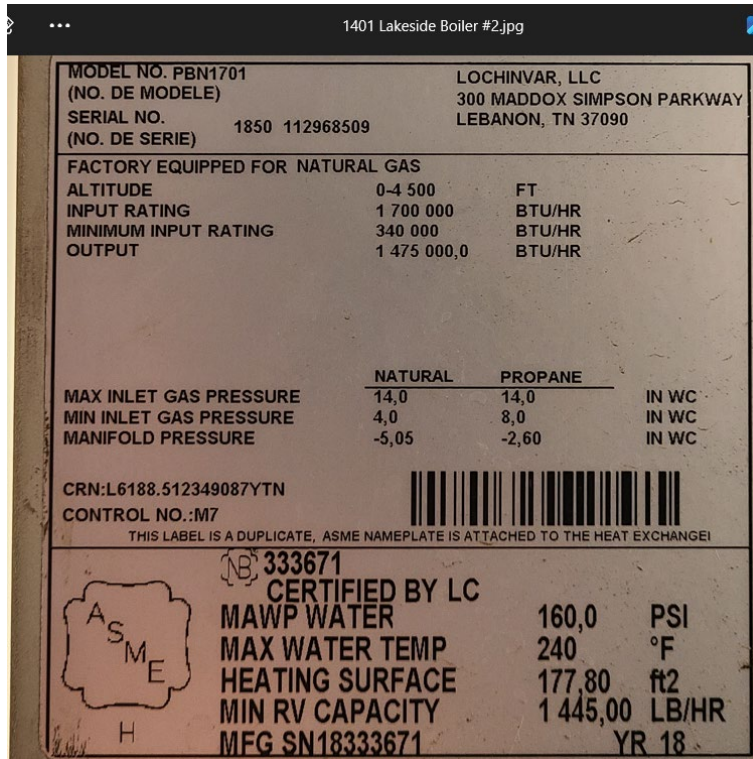
**County of Alameda, General Services Agency – Procurement
RFP No. 902602, Addendum No. 1**



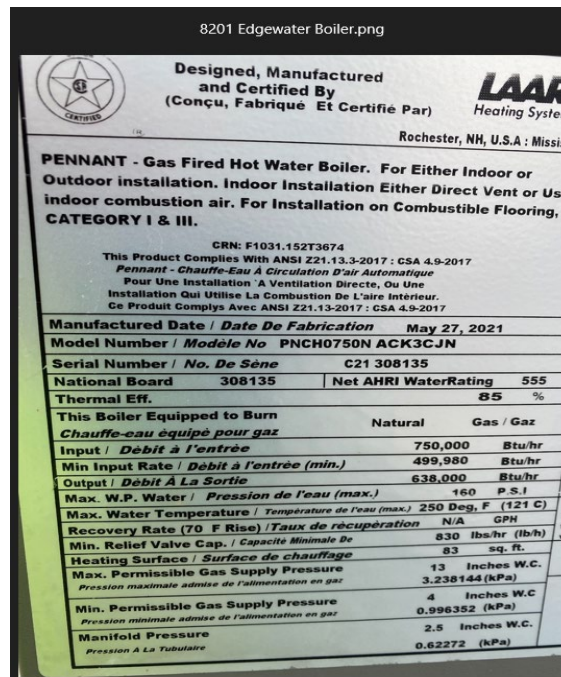
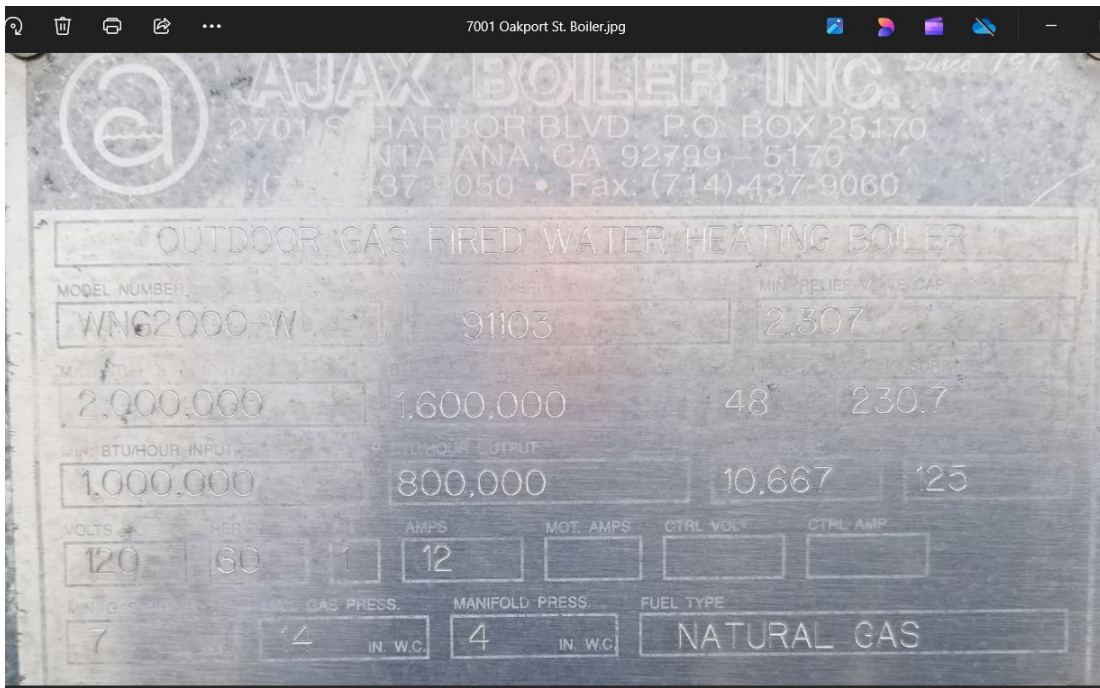
1401 Lakeside Boiler #1.jpg



**County of Alameda, General Services Agency – Procurement
RFP No. 902602, Addendum No. 1**



**County of Alameda, General Services Agency – Procurement
RFP No. 902602, Addendum No. 1**



**County of Alameda, General Services Agency – Procurement
RFP No. 902602, Addendum No. 1**

