



# YEAR FOUR REALIGNMENT REPORT/STATUS UPDATE

Presented to the Public Protection  
Committee  
January 14, 2016

---

# REALIGNMENT GOALS

Approved by the Board of Supervisors in November 2012, these goals are:

- ***Protect the public through transparent and accountable administration and service***
- ***Ensure effective and supportive transitions from detention to the community***
- ***Develop innovative and therapeutic support for clients focused on health, housing, and improving access to family sustaining employment***

Continued collaboration between and among community members, community-based service providers and public agency personnel is essential to accomplishing these goals. The Year Four Status Update seeks to sustain and enhance the vitality of ongoing collaboration and communication.

# FY 14/15 ALLOCATION

- \$31.5 million (base allocation)
- \$ 3.1 million (one-time carry-over funds)

**Total: \$34.6 million**

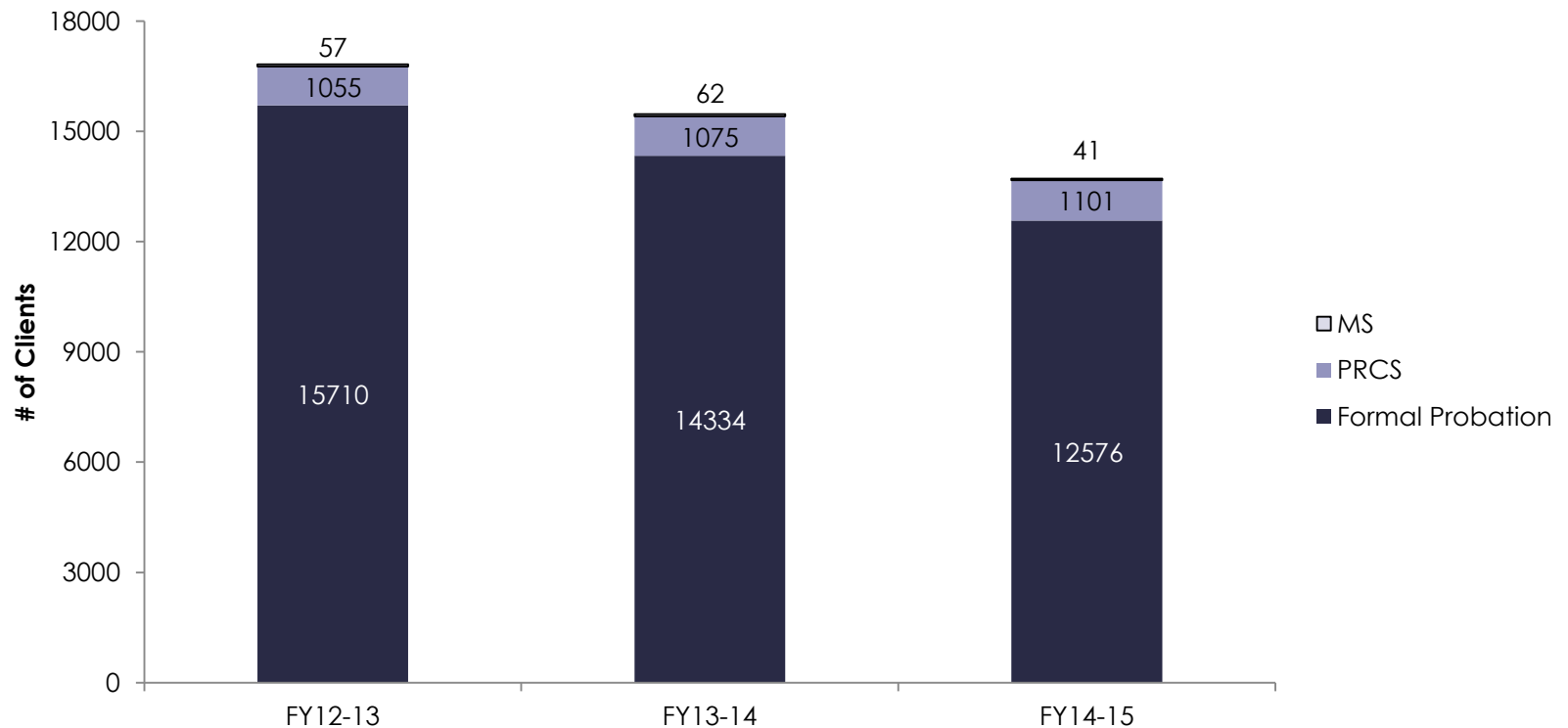


# ALLOCATIONS

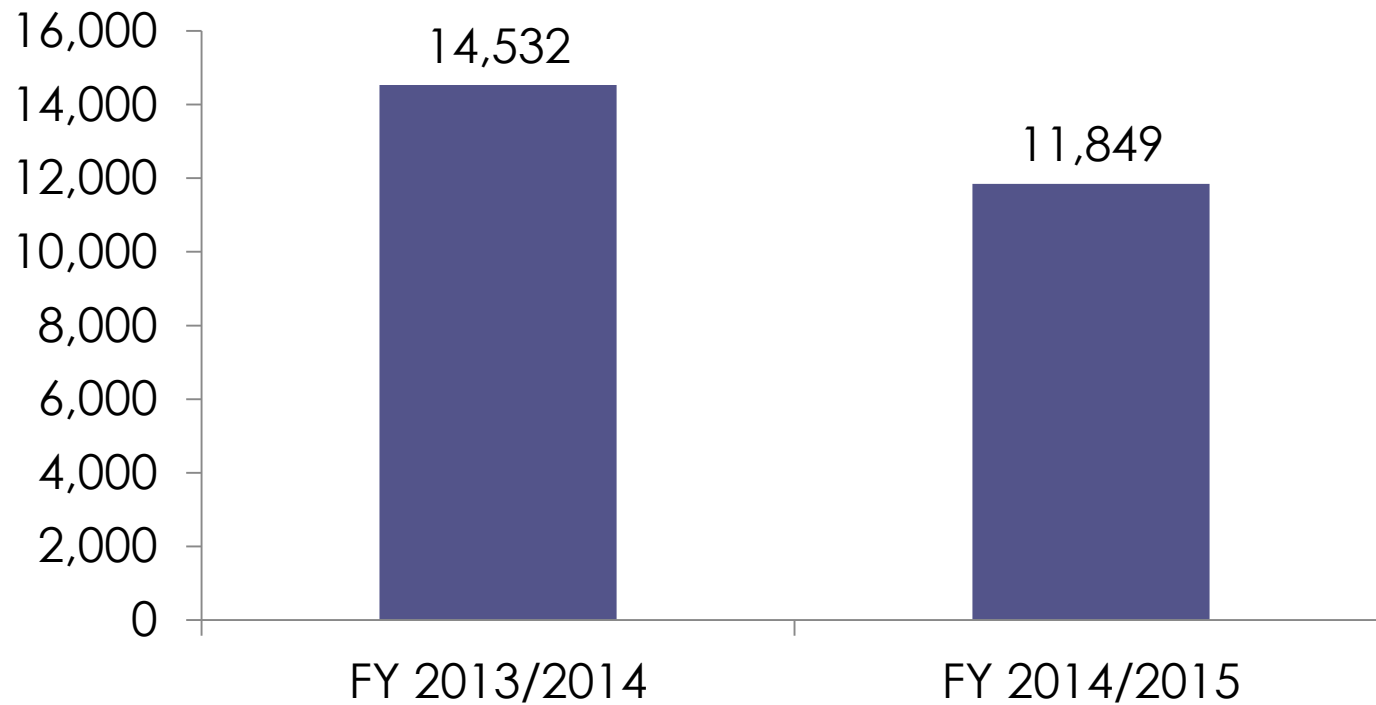
● Sheriff's Office	\$18.5M
● Probation Department	\$ 3.2M
● Behavioral Health	\$ 3.0M
● District Attorney	\$ 1.3M
● Public Defender	\$ 1.3M
● Community Capacity Fund	\$ 3.0M
● Community Services	\$ 3.9M
❖ Education/Employment (\$3M)	
❖ Housing (\$.4M)	
❖ TDRC (.5M)	
● eCRIMS	\$ 0.4M

# PROBATION POPULATION

## Clients Active on Probation



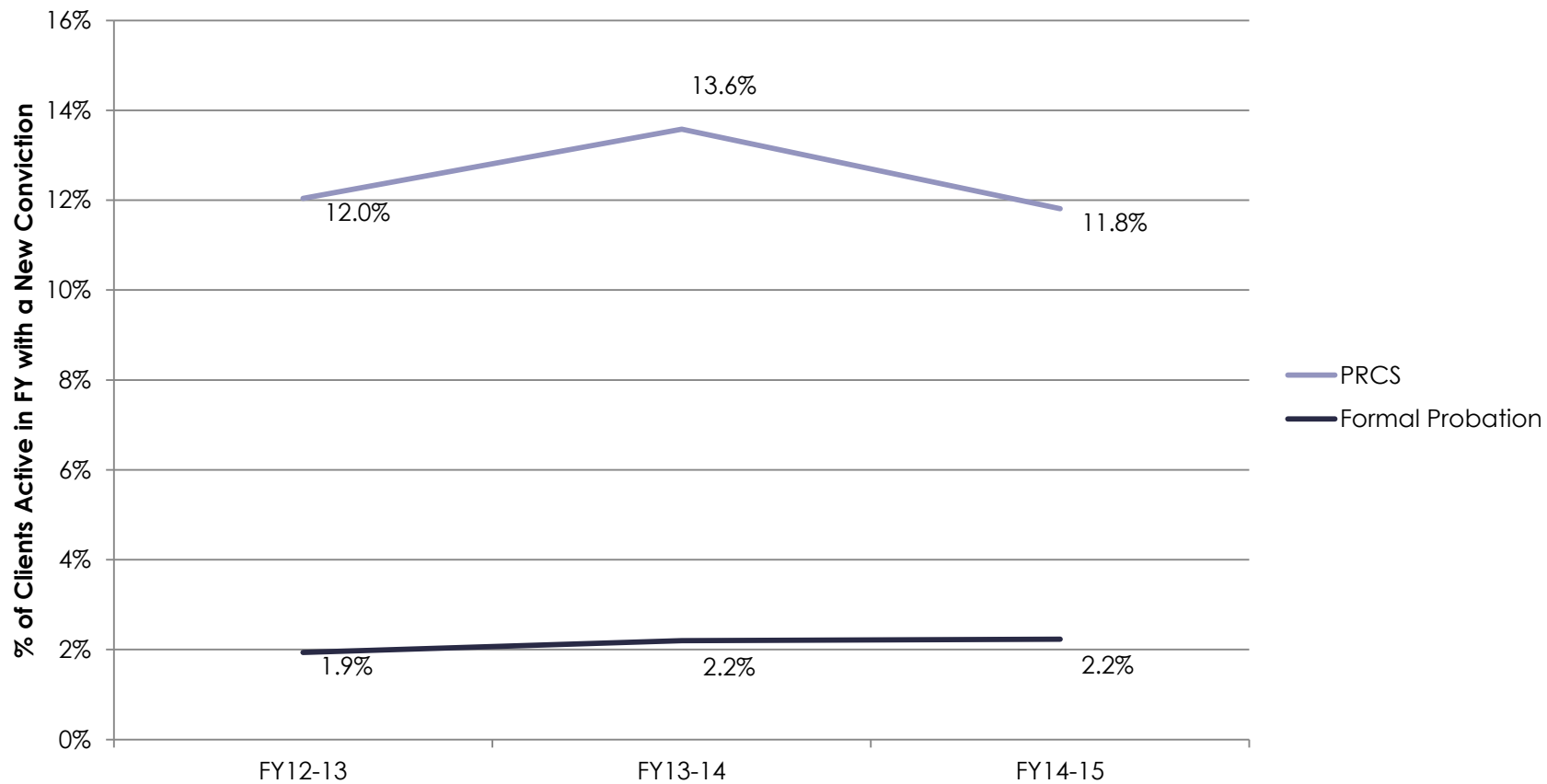
# REALIGNED POPULATION





# **ALAMEDA COUNTY'S RECIDIVISM RATE**

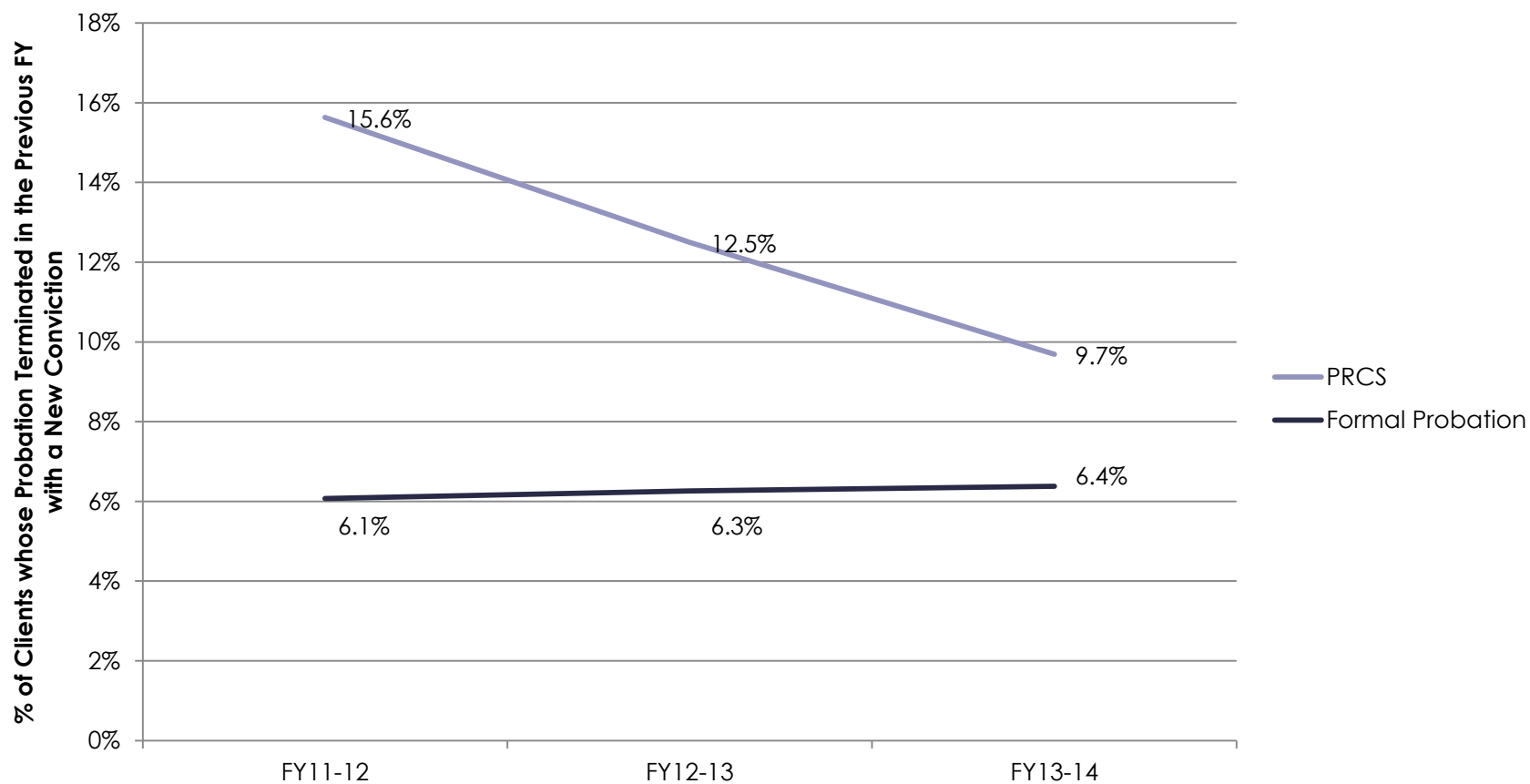
## Active Clients with a New Conviction in Fiscal Year



Note: Alameda County convictions, only

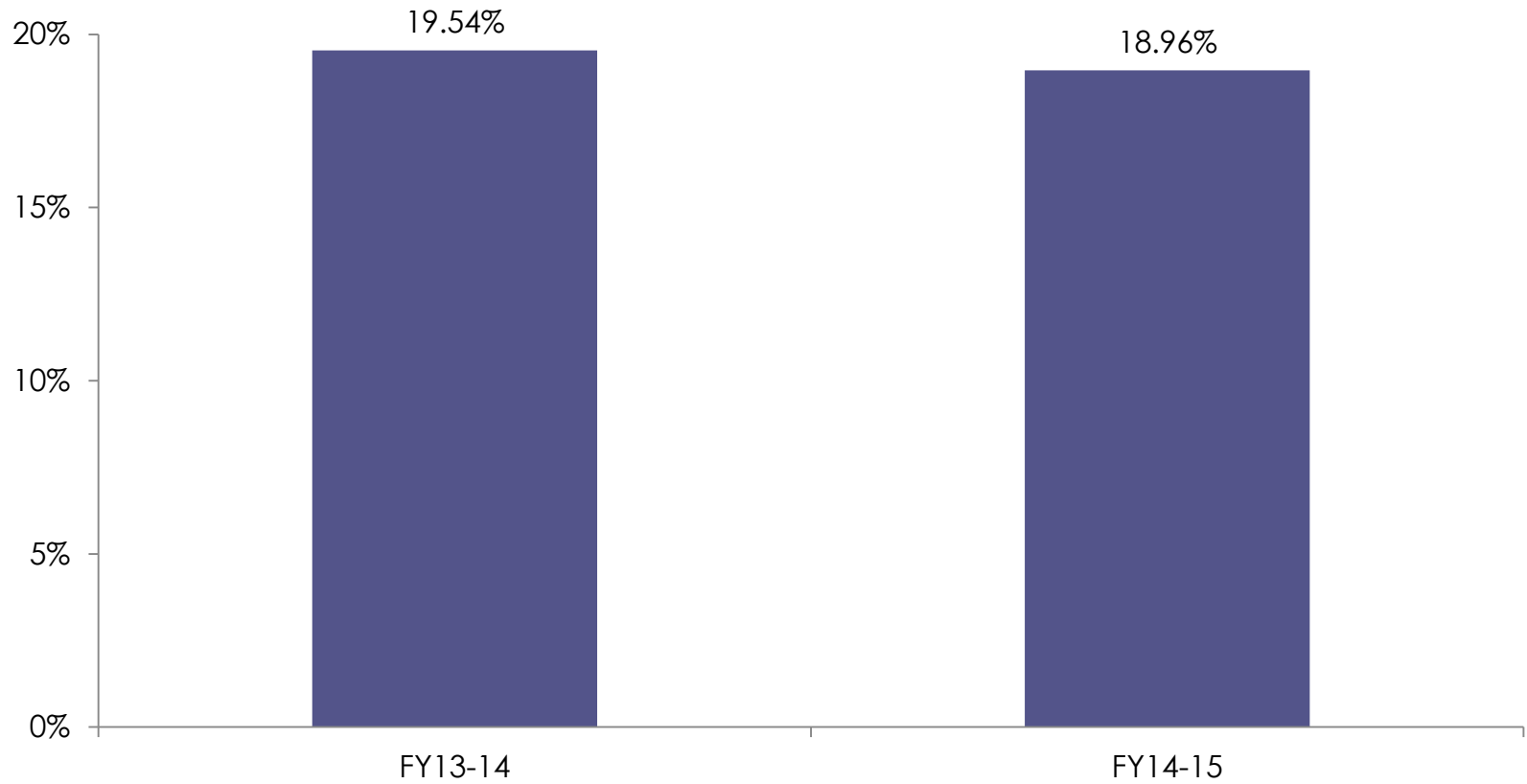


## New Conviction One Year After Termination of Probation



Note: Alameda County convictions, only

## Violations Filed as a Percentage of the Active Population



# CLIENTS SERVED

Who received services, by category?

What are the outcomes?

- ✓ Housing
- ✓ Employment





## **Additional categories outlined in the Status Report include:**

- Probation Supervision Services (page 32)
- Clean Slate Program and Social Worker Initiatives (page 36)
- In-Custody Services (page 44)
- eCRIMS (page 47)
- Mental Health/Substance Use (page 49)
- Innovations in Reentry (page 52)
- Transition Day Reporting Center (page 84)
- Pretrial Services & Early Intervention Court (page 87)



# HOUSING

## **PROGRAMMATIC OVERSIGHT –**

Alameda County Housing and Community Development (HCD)

## **THREE PROVIDERS (county-wide)**

- ❖ Abode Services - South/East/Mid County;
- ❖ Berkeley Food and Housing Program (BFHP) - Berkeley Albany and Emeryville; and
- ❖ East Oakland Community Program (EOCP) - Oakland and Piedmont

## **SERVICES**

Pre-Release, In-Custody (Santa Rita Jail)

Post-Release



## **The range of services provided includes, though is not limited to:**

<ul style="list-style-type: none"><li>• Short-term rental subsidies</li></ul>	<ul style="list-style-type: none"><li>• Transportation assistance</li></ul>	<ul style="list-style-type: none"><li>• Landlord relationship building</li></ul>
<ul style="list-style-type: none"><li>• Housing search and placement support</li></ul>	<ul style="list-style-type: none"><li>• Housing Case management</li></ul>	<ul style="list-style-type: none"><li>• Coordination with employment support providers</li></ul>
<ul style="list-style-type: none"><li>• Support with reducing barrier to obtaining housing</li></ul>	<ul style="list-style-type: none"><li>• Assistance with re-unification with support system and family members</li></ul>	

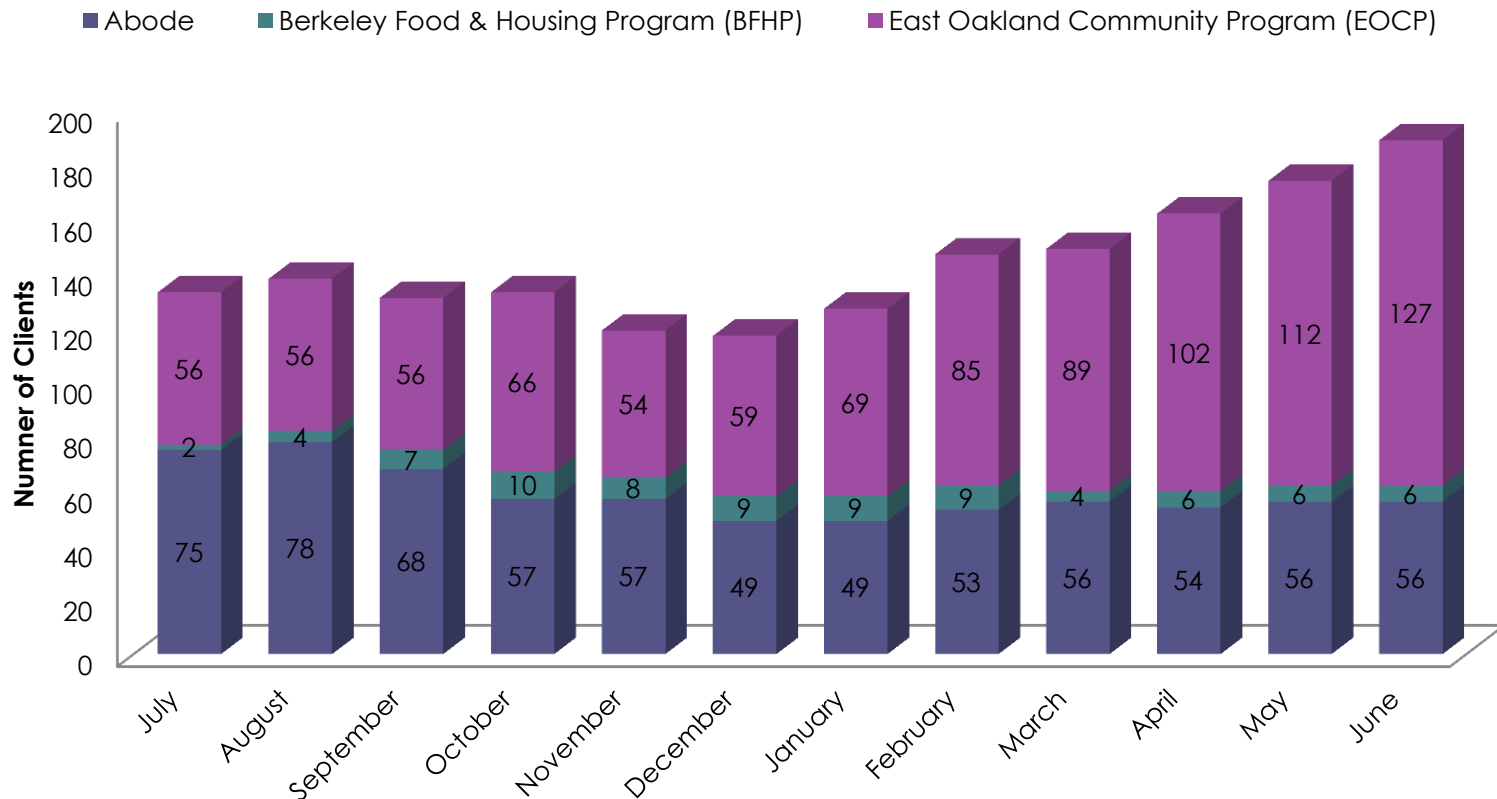


**Realignment Housing Program Referrals and Enrollments: Years One through Year Three Comparison**

	Year One August 2012 – June 2013	Year Two July 2013 – June 2014	Year Three July 2014 – June 2015
Total Served	97	144	280

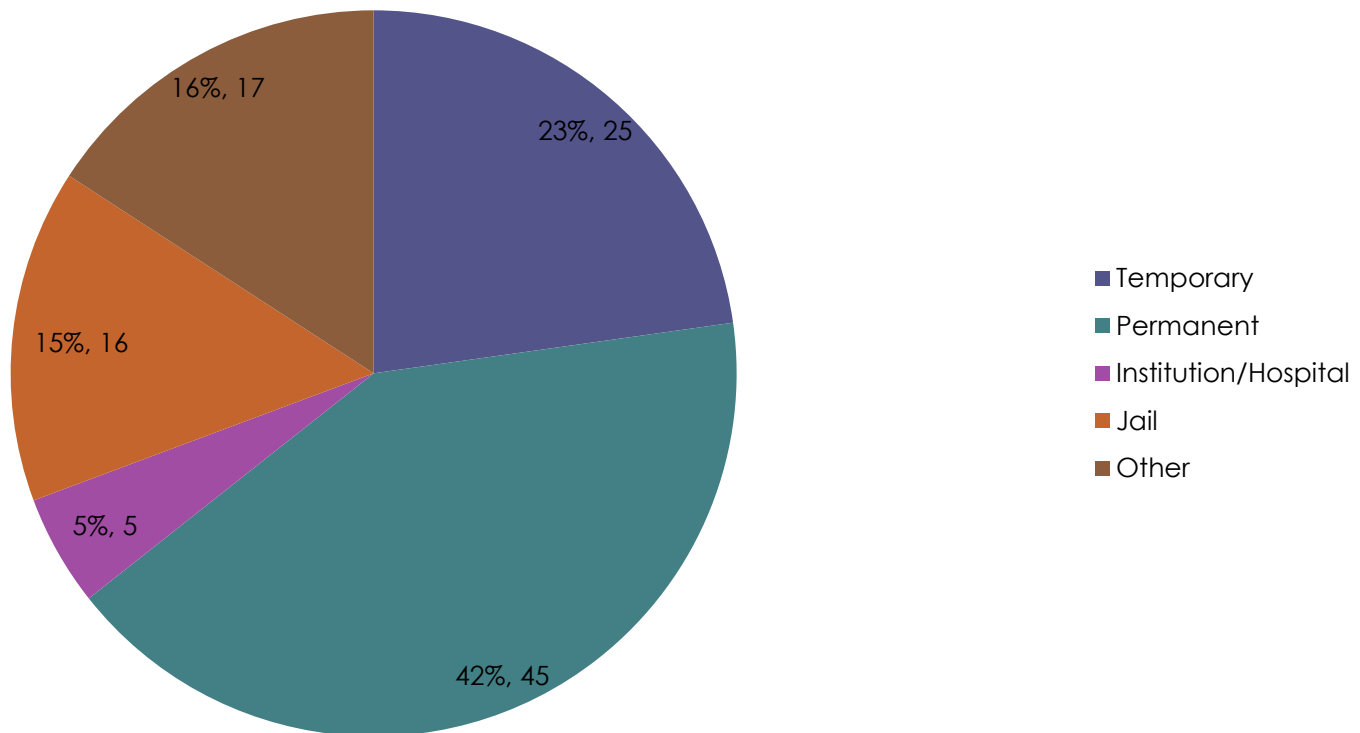


## Number of Realignment Housing Program Participants served by Agency: FY14/15



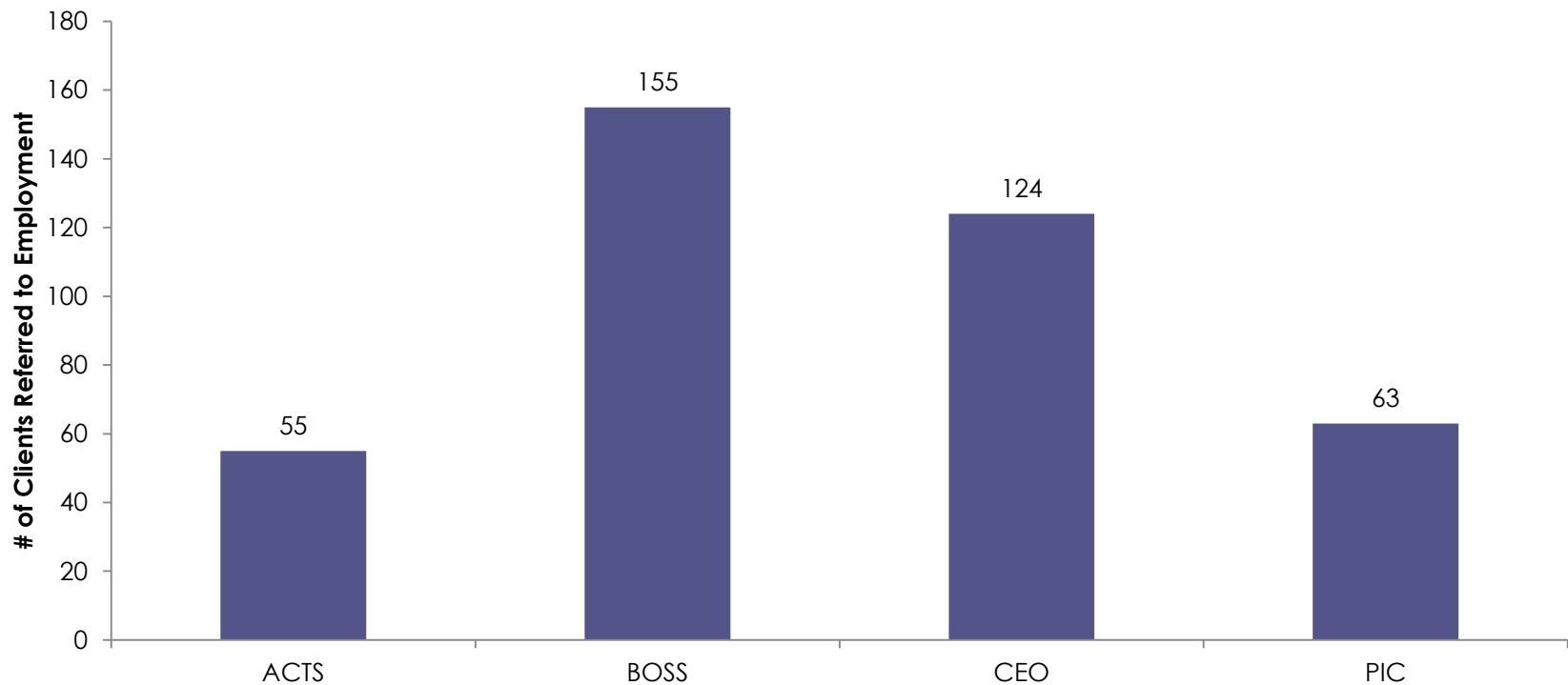


## Realignment Housing Program - Exits by Destination Types: FY14/15



# EMPLOYMENT

## Referrals to Employment Services by Employment Partner (n=397)



# EMPLOYMENT SERVICE BENCHMARKS

AGENCY	REFERRED	ENROLLED AND ASSESSED	SUBSIDIZED EMPLOYMENT	UNSUBSIDIZED EMPLOYMENT	30-DAY JOB RETENTION	90-DAY JOB RETENTION	180-DAY JOB RETENTION
<i>ACTS</i>	55	45	4	19	4	1	0
<i>BOSS</i>	155	111	87	33	22	9	6
<i>CEO</i>	124	73	57	18	7	4	0
<i>PIC</i>	63	30	16	9	5	3	1
<i>Total</i>	397	259	164	79	38	17	7

# TRANSITION DAY REPORTING CENTER (TDRC)



# OUTCOMES

	ENROLLED	COMPLETED	IN-PROGRESS
<b>CBT Workshops (Cohorts/Individualized)</b>	87	46	30
<b>Parenting</b>	33	4	21
<b>Cultural Mentoring</b>	21	0	5
<b>Barrier Identification and Removal</b>	20	15	4
<b>5 Keys Charter School</b>	34	1	25
<b>Employment partner orientations</b>	16	16	0
<b>Housing partner interviews</b>	27	27	0
<b>Benefits assessments and enrollments</b>	11	11	0



# PROGRAMS AND SERVICES

## **GOAL:**

Ensure availability of, and access to, effective results-oriented services for Realignment populations from the continuum of charging through successful re-entry.

## **STATUS UPDATE/ACCOMPLISHMENTS:**

- ❖ Centralization of reentry-related Announcements/Events
- ❖ Reentry Resource Guide

# PROCESS AND EVALUATION

## **GOAL:**

Define and develop the plan for, implementation, and evaluation of, Realignment activities in Alameda County.

## **STATUS UPDATE/ACCOMPLISHMENTS:**

- ❖ Developed CCPEC Policies and Procedures



# DATA AND INFORMATION MANAGEMENT

## **GOAL:**

Design and develop a comprehensive, integrated data management system that allows tracking of individuals, outcomes, and costs.

## **STATUS UPDATE/ACCOMPLISHMENTS:**

- ❖ eCRIMS (refer to page 39 for details)



# FISCAL AND PROCUREMENT

## **GOAL:**

Develop an annual Realignment allocation plan and procedures for effective and efficient procurement.

## **STATUS UPDATE/ACCOMPLISHMENTS:**

- ❖ Developed Realignment-funded Budget & RFP Recommendations



# COMMUNITY ADVISORY BOARD (CAB) UPDATE

- ❑ CAB is meeting monthly, alternating meetings between Oakland and Hayward
- ❑ Vacancies

# LOOKING FORWARD

- o **Community Capacity Fund (CCF)**

- ❑ Phase I Planning Grant RFP Released - November 2015
- ❑ Grantee Award Letters Issued – December 2015
- ❑ Project Contract Start Date – Early Spring 2016
- ❑ Technical Assistance RFP Released - November 2015

- o **Realignment Evaluation**

- ❑ RFP Released July 2015
- ❑ Contract Start Date - February 1, 2016

- o **Direct Service Grants (DSG) – Administered by the Probation Department:**

- ❑ Employment
- ❑ Education
- ❑ Case Management
- ❑ Pretrial Services
- ❑ For Us By Us

# LOOKING FORWARD

## ◦ Innovations in Reentry – Phase 1

- ❑ \$400,000 to 8 existing grantees
- ❑ Goal: Develop a tangible product, such as a curriculum of training or best-practice program model that builds on their original grant.
- ❑ Update: Applications have been received, reviewed and ranked
- ❑ Agreements Executed: January 31, 2016

# LOOKING FORWARD

## ◉ Innovations in Reentry – Phase 2

- ❑ Notification of Funds Available (NFA) issued February 2016
- ❑ Funds Available - \$1.6M
- ❑ Grants Awarded – April 2016
- ❑ Contract Period – 18 months



# **Questions & Answers**